

Data Path : Z:\voasrv\HPCHEM1\MSVOA_V\Data\VW121323\
 Data File : VW033291.D
 Acq On : 13 Dec 2023 21:09
 Operator : SY/MD
 Sample : 05731-17
 Misc : 25.0mL/MSVOA_V/WATER
 ALS Vial : 25 Sample Multiplier: 1

Instrument :
 MSVOA_V
 ClientSampleId :
 E0Y63

Integration Parameters: rteint.p
 Integrator: RTE
 Smoothing : ON
 Sampling : 1
 Start Thrs : 0.1
 Stop Thrs : 0
 Filtering: 5
 Min Area: 3 % of largest Peak
 Max Peaks: 100
 Peak Location: TOP

If leading or trailing edge < 100 prefer < Baseline drop else tangent >
 Peak separation: 5

Method : Z:\voasrv\HPCHEM1\MSVOA_V\Method\SFAMVTR121323WMA.M
 Title : TRACE VOA SFAM1.0

Signal : TIC: VW033291.D\data.ms

peak #	R.T. min	first scan	max scan	last scan	PK TY	peak height	corr. area	corr. % max.	% of total
1	1.085	8	14	27	rVB	129013	125396	28.80%	3.141%
2	1.191	40	47	52	rBV	62459	57004	13.09%	1.428%
3	1.278	64	74	88	rVB2	126853	158766	36.46%	3.977%
4	1.532	145	153	165	rVB	49302	55462	12.74%	1.389%
5	1.600	165	174	187	rVB	25197	33079	7.60%	0.829%
6	1.670	189	196	204	rBV	4054	4670	1.07%	0.117%
7	1.767	218	226	240	rVB	15915	21817	5.01%	0.547%
8	2.060	306	317	332	rBV	97389	142116	32.64%	3.560%
9	2.471	436	445	454	rBV5	4309	7342	1.69%	0.184%
10	2.696	505	515	526	rVB6	3459	6782	1.56%	0.170%
11	2.969	591	600	611	rVB5	4543	9747	2.24%	0.244%
12	3.670	805	818	832	rBB6	4871	11386	2.61%	0.285%
13	3.802	850	859	894	rBV	27582	92795	21.31%	2.325%
14	4.249	980	998	1023	rBV3	78333	218938	50.28%	5.485%
15	4.577	1086	1100	1101	rBV6	4321	5285	1.21%	0.132%
16	4.957	1203	1218	1252	rBV3	166551	435442	100.00%	10.908%
17	5.535	1387	1398	1420	rBV	125592	258675	59.41%	6.480%
18	5.834	1480	1491	1518	rBV2	67683	140319	32.22%	3.515%
19	5.989	1525	1539	1554	rBV	87306	182204	41.84%	4.564%
20	6.915	1817	1827	1849	rBV2	43214	82837	19.02%	2.075%
21	7.243	1919	1929	1945	rVV	209191	376871	86.55%	9.441%
22	7.320	1945	1953	1973	rVB	36186	69343	15.92%	1.737%
23	7.558	2018	2027	2055	rVV	24828	49758	11.43%	1.247%
24	7.908	2119	2136	2147	rVB6	8109	14748	3.39%	0.369%
25	8.030	2164	2174	2204	rBV	130729	272279	62.53%	6.821%
26	8.786	2395	2409	2431	rBV	200562	336947	77.38%	8.441%
27	8.953	2450	2461	2473	rBV2	9913	15841	3.64%	0.397%
28	9.079	2491	2500	2513	rBV4	9635	16583	3.81%	0.415%
29	9.484	2617	2626	2634	rBV3	4749	7437	1.71%	0.186%
30	10.156	2824	2835	2847	rBV2	61897	98567	22.64%	2.469%
31	10.853	3046	3052	3060	rBV3	4685	6907	1.59%	0.173%
32	11.188	3143	3156	3176	rBV	204487	330839	75.98%	8.288%
33	11.561	3260	3272	3293	rVB	217092	345618	79.37%	8.658%

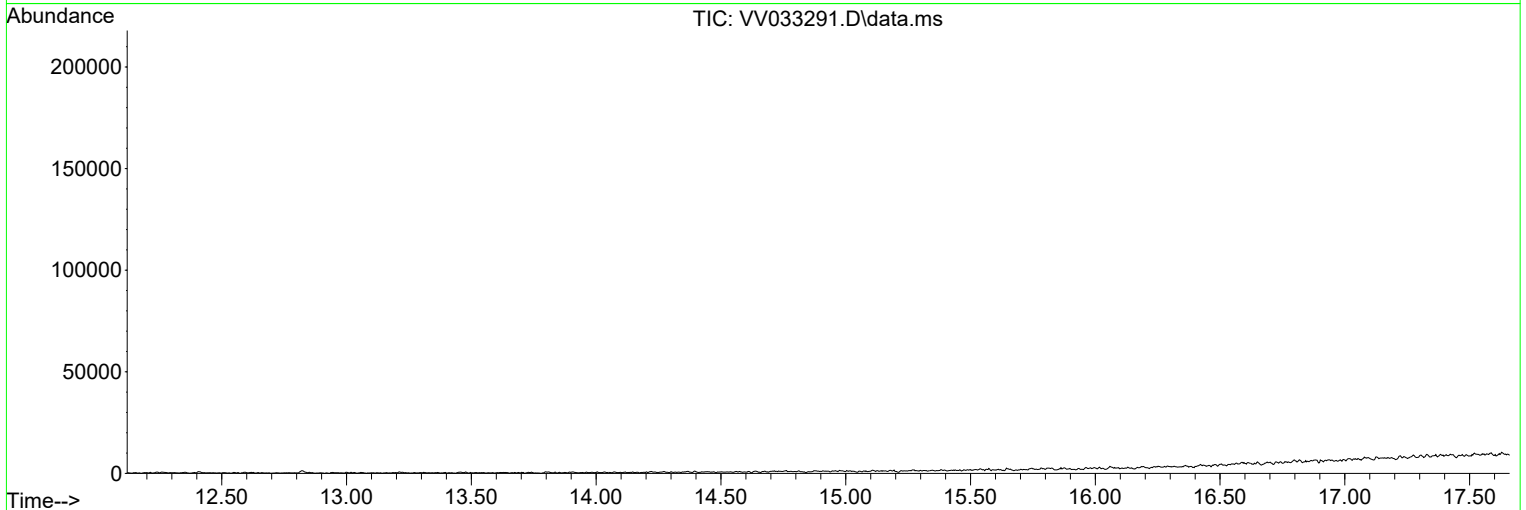
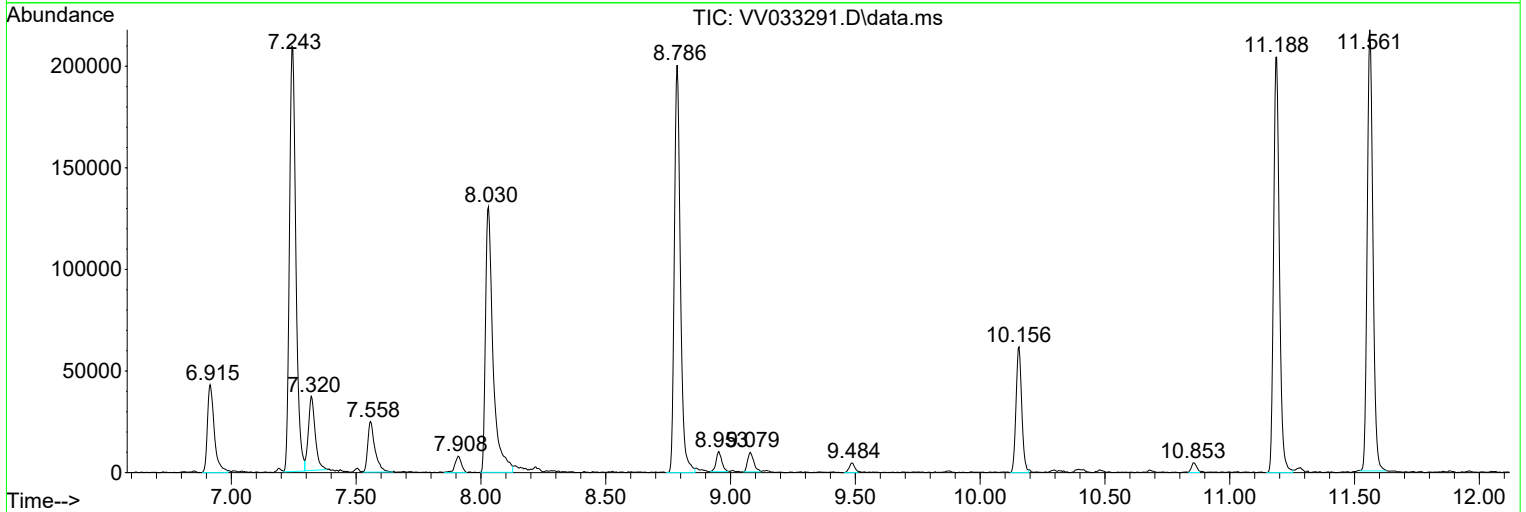
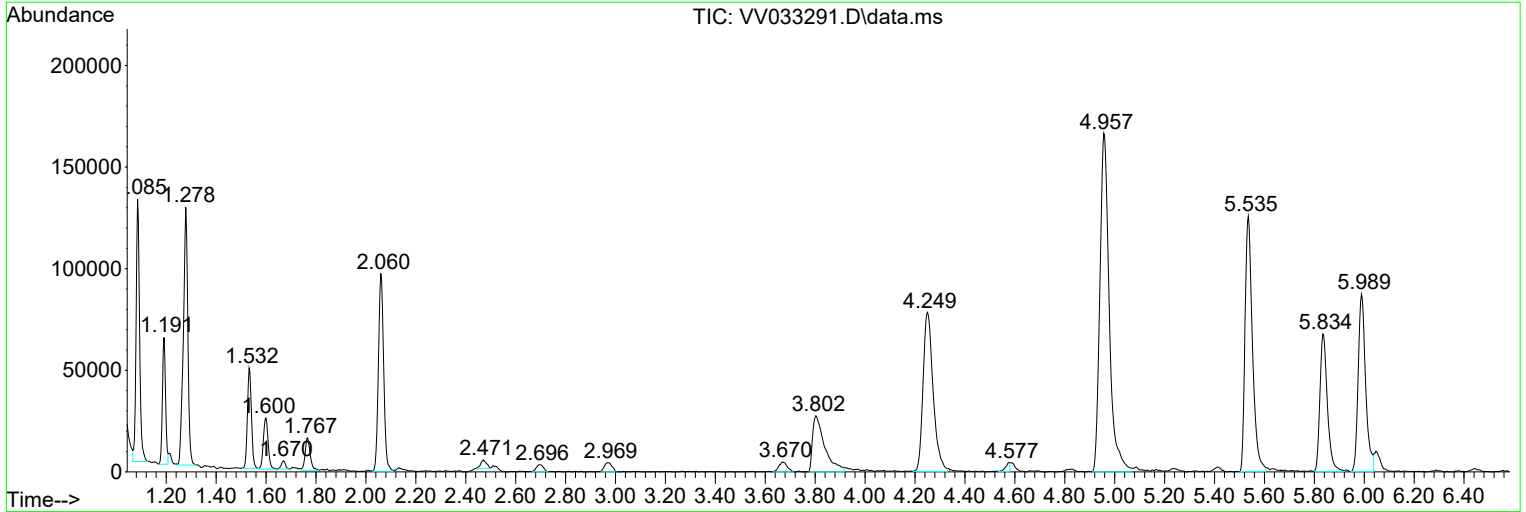
Sum of corrected areas: 3991800

Data Path : Z:\voasrv\HPCHEM1\MSVOA_V\Data\VV121323\
 Data File : VV033291.D
 Acq On : 13 Dec 2023 21:09
 Operator : SY/MD
 Sample : 05731-17
 Misc : 25.0mL/MSVOA_V/WATER
 ALS Vial : 25 Sample Multiplier: 1

Instrument :
 MSVOA_V
 ClientSampleId :
 E0Y63

Quant Method : Z:\voasrv\HPCHEM1\MSVOA_V\Method\SFAMVTR121323WMA.M
 Quant Title : TRACE VOA SFAM1.0

TIC Library : C:\Database\NIST20.L
 TIC Integration Parameters: LSCINT.P



Data Path : Z:\voasrv\HPCHEM1\MSVOA_V\Data\VV121323\
 Data File : VV033291.D
 Acq On : 13 Dec 2023 21:09
 Operator : SY/MD
 Sample : 05731-17
 Misc : 25.0mL/MSVOA_V/WATER
 ALS Vial : 25 Sample Multiplier: 1

Instrument :
 MSVOA_V
 ClientSampleId :
 E0Y63

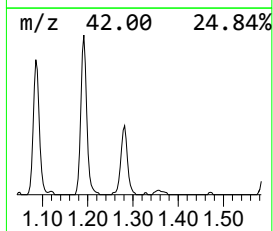
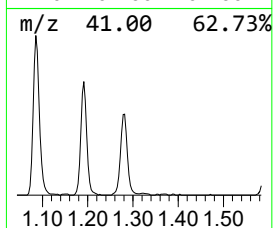
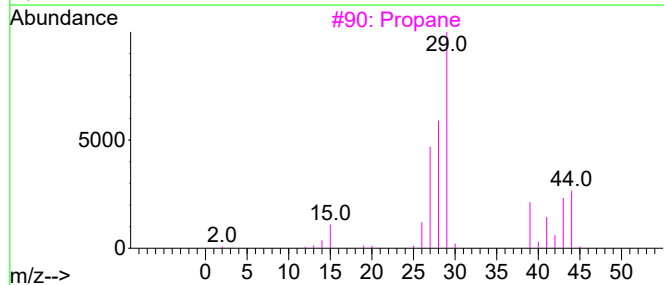
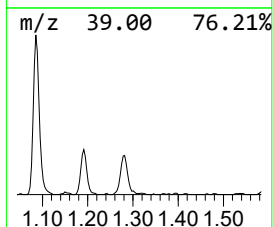
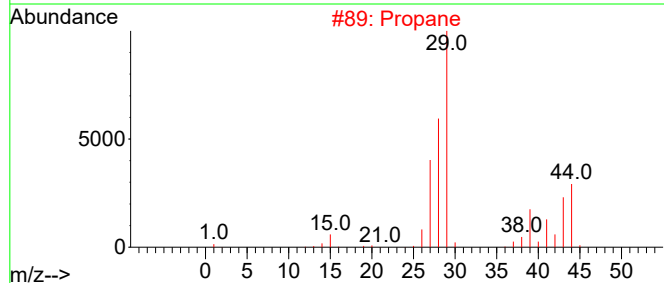
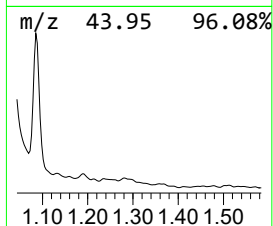
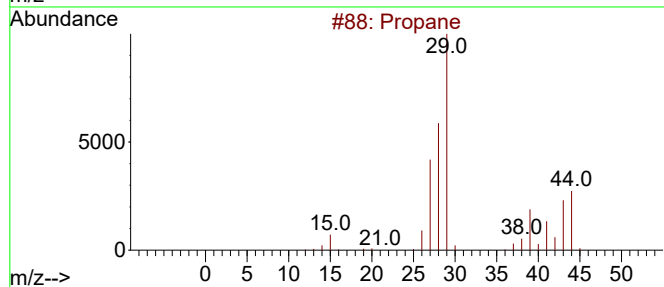
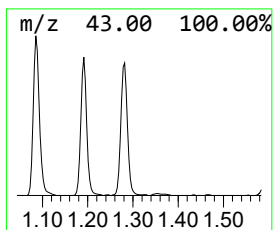
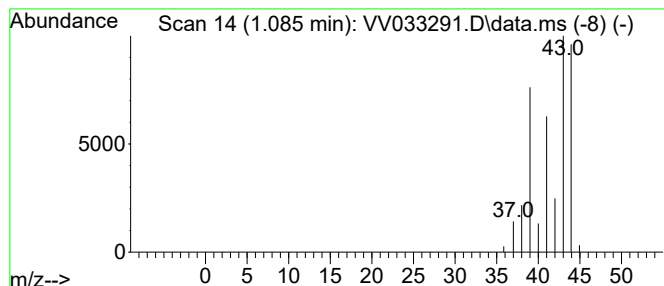
Quant Method : Z:\voasrv\HPCHEM1\MSVOA_V\Method\SFAMVTR121323WMA.M
 Quant Title : TRACE VOA SFAM1.0

TIC Library : C:\Database\NIST20.L
 TIC Integration Parameters: LSCINT.P

 Peak Number 1 (DEL) Alkane: Straight-Chai... Concentration Rank 1

R.T.	EstConc	Area	Relative to ISTD	R.T.
1.085	2.42 ug/L	125396	1,4-Difluorobenzene	5.535

Hit#	of 5	Tentative ID	MW	MolForm	CAS#	Qual
1		Propane	44	C3H8	000074-98-6	90
2		Propane	44	C3H8	000074-98-6	83
3		Propane	44	C3H8	000074-98-6	9
4		Propene	42	C3H6	000115-07-1	9
5		Cyclopropene	40	C3H4	002781-85-3	2



Data Path : Z:\voasrv\HPCHEM1\MSVOA_V\Data\VV121323\
 Data File : VV033291.D
 Acq On : 13 Dec 2023 21:09
 Operator : SY/MD
 Sample : 05731-17
 Misc : 25.0mL/MSVOA_V/WATER
 ALS Vial : 25 Sample Multiplier: 1

Instrument :
 MSVOA_V
 ClientSampleId :
 E0Y63

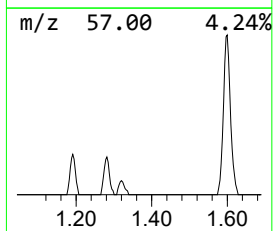
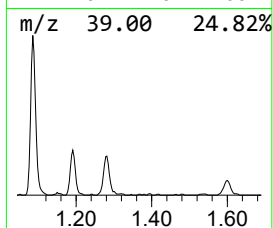
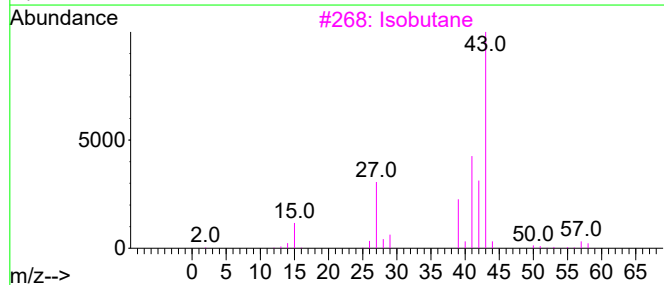
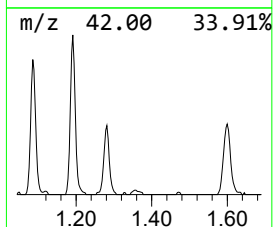
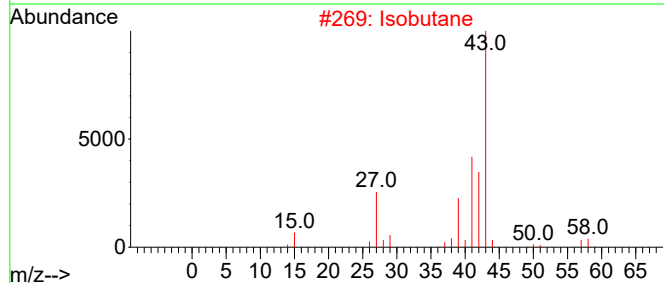
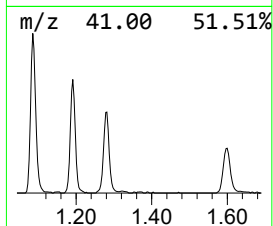
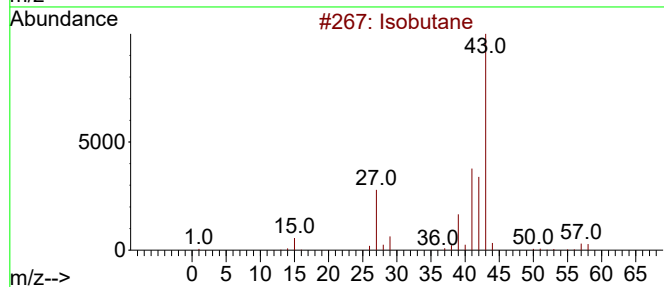
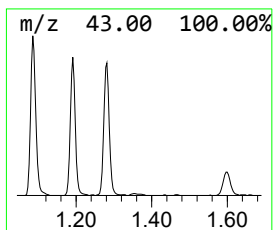
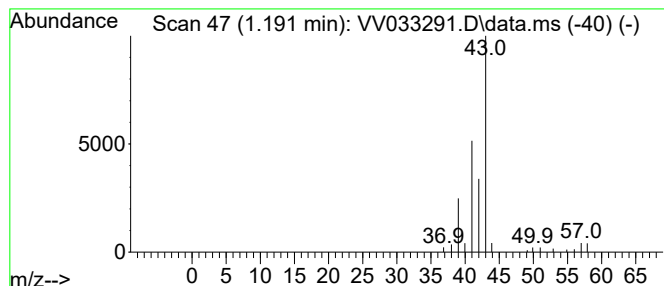
Quant Method : Z:\voasrv\HPCHEM1\MSVOA_V\Method\SFAMVTR121323WMA.M
 Quant Title : TRACE VOA SFAM1.0

TIC Library : C:\Database\NIST20.L
 TIC Integration Parameters: LSCINT.P

 Peak Number 2 (DEL) Alkane: Straight-Chai... Concentration Rank 3

R.T.	EstConc	Area	Relative to ISTD	R.T.
1.191	1.10 ug/L	57004	1,4-Difluorobenzene	5.535

Hit#	of 5	Tentative ID	MW	MolForm	CAS#	Qual
1		Isobutane	58	C4H10	000075-28-5	64
2		Isobutane	58	C4H10	000075-28-5	64
3		Isobutane	58	C4H10	000075-28-5	64
4		Isobutane	58	C4H10	000075-28-5	64
5		Isobutane	58	C4H10	000075-28-5	9



Data Path : Z:\voasrv\HPCHEM1\MSVOA_V\Data\VV121323\
 Data File : VV033291.D
 Acq On : 13 Dec 2023 21:09
 Operator : SY/MD
 Sample : 05731-17
 Misc : 25.0mL/MSVOA_V/WATER
 ALS Vial : 25 Sample Multiplier: 1

Instrument :
 MSVOA_V
 ClientSampleId :
 E0Y63

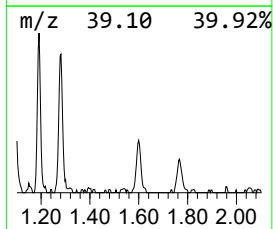
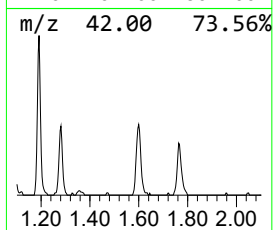
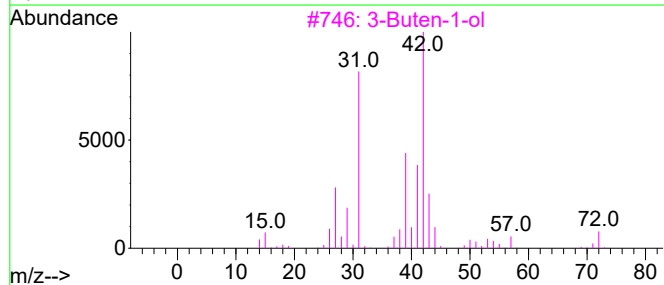
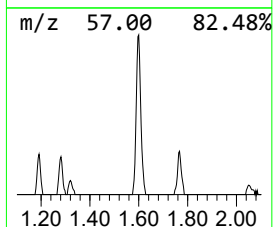
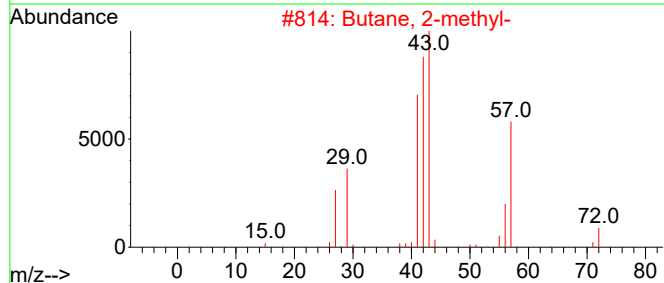
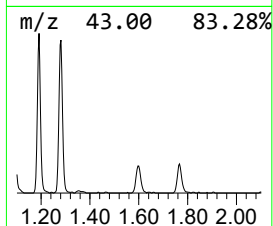
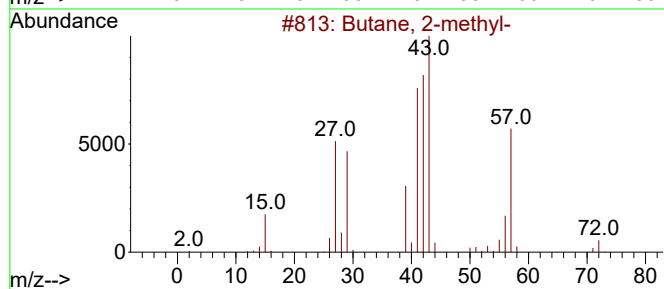
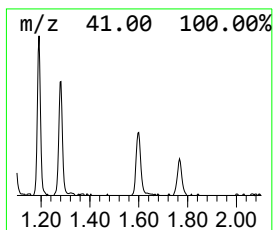
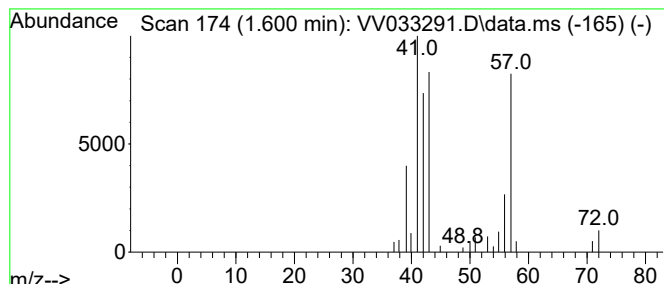
Quant Method : Z:\voasrv\HPCHEM1\MSVOA_V\Method\SFAMVTR121323WMA.M
 Quant Title : TRACE VOA SFAM1.0

TIC Library : C:\Database\NIST20.L
 TIC Integration Parameters: LSCINT.P

 Peak Number 3 (DEL) Alkane: Straight-Chai... Concentration Rank 4

R.T.	EstConc	Area	Relative to ISTD	R.T.
1.600	0.64 ug/L	33079	1,4-Difluorobenzene	5.535

Hit#	of 5	Tentative ID	MW	MolForm	CAS#	Qual
1		Butane, 2-methyl-	72	C5H12	000078-78-4	59
2		Butane, 2-methyl-	72	C5H12	000078-78-4	59
3		3-Buten-1-ol	72	C4H8O	000627-27-0	40
4		1-Propene, 2-methyl-	56	C4H8	000115-11-7	30
5		2-Butene-1,4-diol, (Z)-	88	C4H8O2	006117-80-2	28



Data Path : Z:\voasrv\HPCHEM1\MSVOA_V\Data\VW121323\
Data File : VV033291.D
Acq On : 13 Dec 2023 21:09
Operator : SY/MD
Sample : 05731-17
Misc : 25.0mL/MSVOA_V/WATER
ALS Vial : 25 Sample Multiplier: 1

Instrument :
MSVOA_V
ClientSampleId :
E0Y63

Quant Method : Z:\voasrv\HPCHEM1\MSVOA_V\Method\SFAMVTR121323WMA.M
Quant Title : TRACE VOA SFAM1.0

TIC Library : C:\Database\NIST0.L
TIC Integration Parameters: LSCINT.P

TIC Top Hit name	RT	EstConc	Units	Response	--Internal Standard--			
					#	RT	Resp	Conc
(DEL) Alkane: S...	1.085	2.4	ug/L	125396	1	5.535	258675	5.0
(DEL) Alkane: S...	1.191	1.1	ug/L	57004	1	5.535	258675	5.0
(DEL) Alkane: S...	1.600	0.6	ug/L	33079	1	5.535	258675	5.0