

Data Path : Z:\voasrv\HPCHEM1\MSVOA_V\Data\VV121323\
 Data File : VV033309.D
 Acq On : 14 Dec 2023 04:43
 Operator : SY/MD
 Sample : 05770-09
 Misc : 25.0mL/MSVOA_V/WATER
 ALS Vial : 44 Sample Multiplier: 1

Instrument :
 MSVOA_V
 ClientSampleId :
 E0Y81

Integration Parameters: rteint.p

Integrator: RTE
 Smoothing : ON Filtering: 5
 Sampling : 1 Min Area: 3 % of largest Peak
 Start Thrs: 0.1 Max Peaks: 100
 Stop Thrs : 0 Peak Location: TOP

If leading or trailing edge < 100 prefer < Baseline drop else tangent >
 Peak separation: 5

Method : Z:\voasrv\HPCHEM1\MSVOA_V\Method\SFAMVTR121323WMA.M
 Title : TRACE VOA SFAM1.0

Signal : TIC: VV033309.D\data.ms

peak #	R.T. min	first scan	max scan	last scan	PK TY	peak height	corr. area	corr. % max.	% of total
1	1.085	10	14	29	rVB2	16365	20038	4.47%	0.532%
2	1.191	40	47	51	rBV2	6548	6849	1.53%	0.182%
3	1.278	66	74	85	rBV	71987	74843	16.68%	1.986%
4	1.532	145	153	165	rBV	50023	58784	13.10%	1.560%
5	2.060	307	317	334	rVB	103341	151703	33.81%	4.025%
6	2.240	364	373	383	rBV2	3356	5403	1.20%	0.143%
7	3.812	851	862	894	rBV4	32321	109435	24.39%	2.903%
8	4.249	980	998	1026	rBV2	80494	212944	47.46%	5.650%
9	4.957	1202	1218	1250	rBV3	173549	448650	100.00%	11.903%
10	5.535	1386	1398	1420	rBV	124693	262628	58.54%	6.968%
11	5.838	1480	1492	1510	rBV4	20272	44951	10.02%	1.193%
12	5.989	1524	1539	1566	rBV2	91815	192988	43.02%	5.120%
13	6.915	1817	1827	1848	rBV2	43633	84164	18.76%	2.233%
14	7.243	1918	1929	1943	rBV	224915	398849	88.90%	10.582%
15	7.317	1943	1952	1977	rVB	92490	169847	37.86%	4.506%
16	7.558	2018	2027	2049	rBV	26018	49549	11.04%	1.315%
17	7.911	2129	2137	2146	rVB7	4359	7447	1.66%	0.198%
18	8.030	2164	2174	2198	rBV	134324	281455	62.73%	7.467%
19	8.786	2398	2409	2430	rBV	202559	357009	79.57%	9.472%
20	9.079	2492	2500	2512	rVB2	3283	5394	1.20%	0.143%
21	10.156	2824	2835	2854	rVB	63567	102390	22.82%	2.716%
22	11.188	3142	3156	3178	rBV	209417	339786	75.74%	9.015%
23	11.561	3261	3272	3291	rBV	227172	371229	82.74%	9.849%
24	15.856	4596	4608	4610	rBV9	4982	7876	1.76%	0.209%
25	16.249	4725	4730	4737	rVB4	4295	5039	1.12%	0.134%

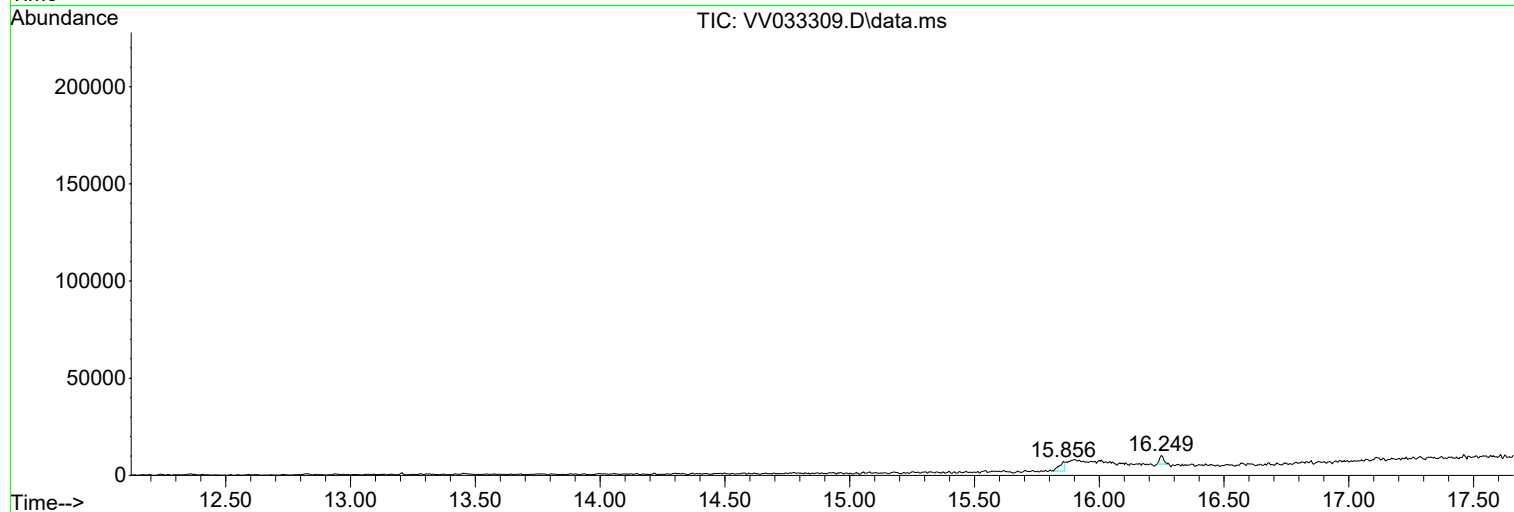
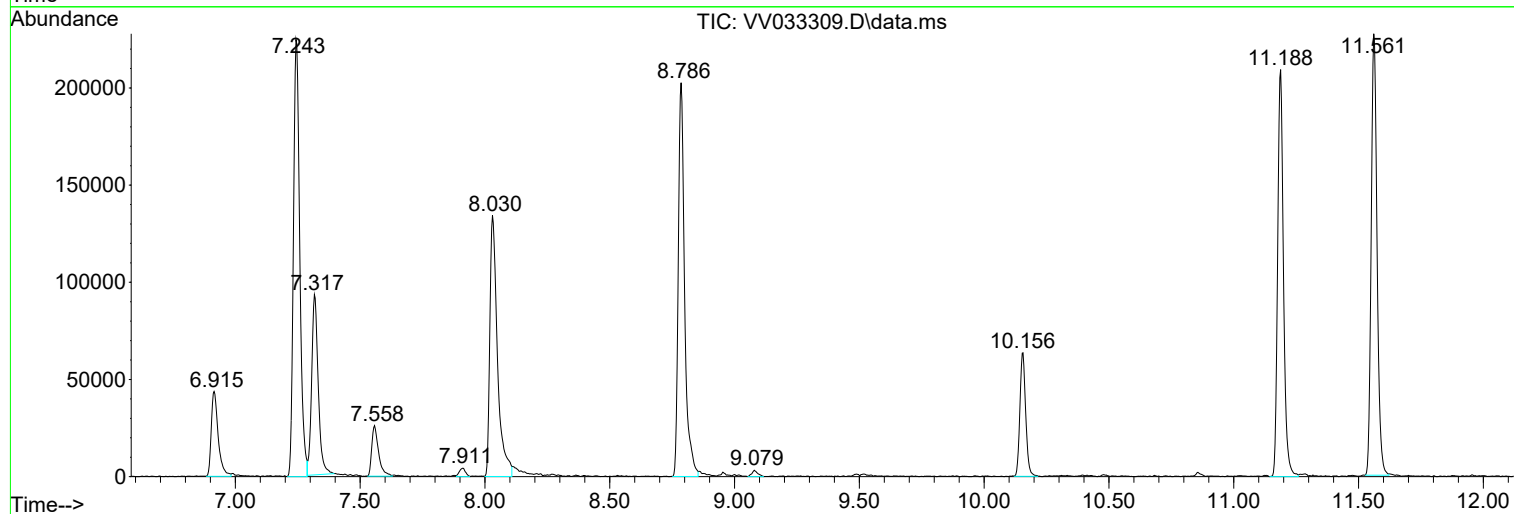
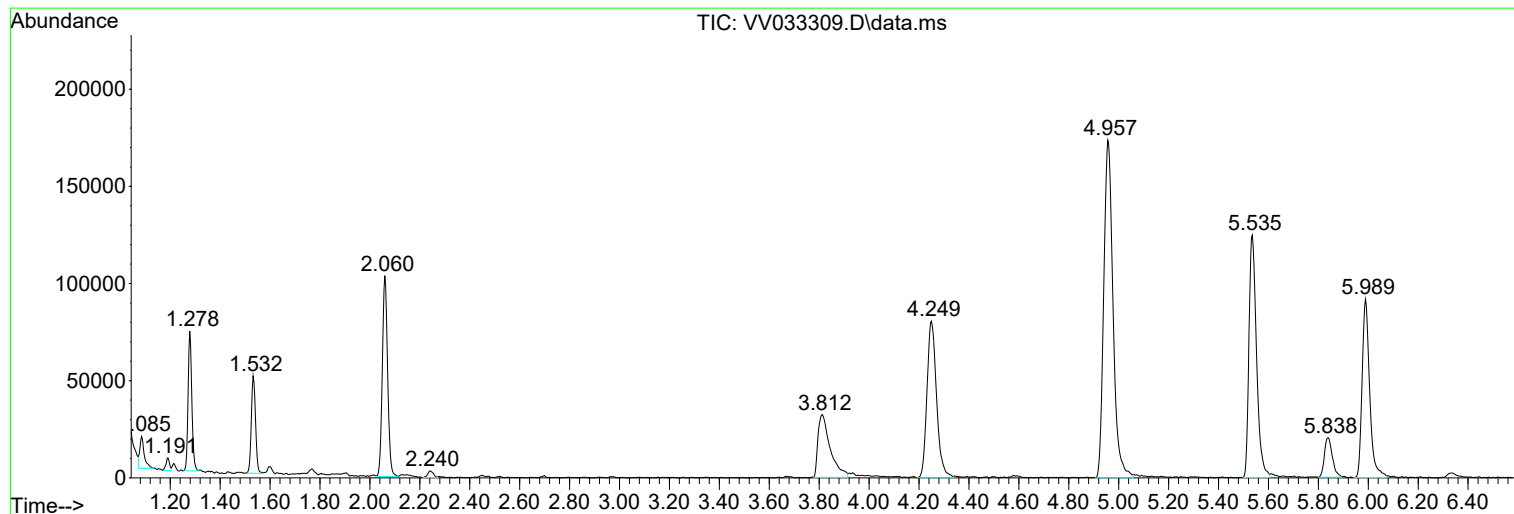
Sum of corrected areas: 3769250

Data Path : Z:\voasrv\HPCHEM1\MSVOA_V\Data\VV121323\
Data File : VV033309.D
Acq On : 14 Dec 2023 04:43
Operator : SY/MD
Sample : 05770-09
Misc : 25.0mL/MSVOA_V/WATER
ALS Vial : 44 Sample Multiplier: 1

Instrument :
MSVOA_V
ClientSampleId :
E0Y81

Quant Method : Z:\voasrv\HPCHEM1\MSVOA_V\Method\SFAMVTR121323WMA.M
Quant Title : TRACE VOA SFAM1.0

TIC Library : C:\Database\NIST20.L
TIC Integration Parameters: LSCINT.P



Data Path : Z:\voasrv\HPCHEM1\MSVOA_V\Data\VV121323\
Data File : VV033309.D
Acq On : 14 Dec 2023 04:43
Operator : SY/MD
Sample : 05770-09
Misc : 25.0mL/MSVOA_V/WATER
ALS Vial : 44 Sample Multiplier: 1

Instrument :
MSVOA_V
ClientSampleId :
E0Y81

Quant Method : Z:\voasrv\HPCHEM1\MSVOA_V\Method\SFAMVTR121323WMA.M
Quant Title : TRACE VOA SFAM1.0

TIC Library : C:\Database\NIST20.L
TIC Integration Parameters: LSCINT.P

No Library Search Compounds Detected

Data Path : Z:\voasrv\HPCHEM1\MSVOA_V\Data\VV121323\
Data File : VV033309.D
Acq On : 14 Dec 2023 04:43
Operator : SY/MD
Sample : 05770-09
Misc : 25.0mL/MSVOA_V/WATER
ALS Vial : 44 Sample Multiplier: 1

Instrument :
MSVOA_V
ClientSampleId :
E0Y81

Quant Method : Z:\voasrv\HPCHEM1\MSVOA_V\Method\SFAMVTR121323WMA.M
Quant Title : TRACE VOA SFAM1.0

TIC Library : C:\Database\NIST0.L
TIC Integration Parameters: LSCINT.P

TIC Top Hit name	RT	EstConc	Units	Response	--Internal Standard--		
					#	RT	Resp Conc
