

Data File : VV008929.D  
 Acq On : 14 Dec 2018 15:05  
 Operator : SY/MD  
 Sample : J6367-15  
 Misc : 5.0 mL/MSVOA\_V/WATER  
 ALS Vial : 8 Sample Multiplier: 1

Instrument :  
 MSVOA\_V  
 ClientSampleId :  
 COL51

Quant Time: Dec 14 23:42:32 2018  
 Quant Method : Z:\VOASRV\HPCHEM1\MSVOA\_V\METHOD\SOMVLM121318WMA.M  
 Quant Title : VOC Analysis  
 QLast Update : Fri Dec 14 23:39:04 2018  
 Response via : Initial Calibration

Internal Standards	R.T.	QIon	Response	Conc	Units	Dev(Min)
1) 1,4-Difluorobenzene	5.67	114	201625	50.00	ug/L	0.00
28) Chlorobenzene-d5	8.90	117	187384	50.00	ug/L	0.00
60) 1,4-Dichlorobenzene-d4	11.30	152	78286	50.00	ug/L	0.00

System Monitoring Compounds

4) Vinyl Chloride-d3	1.32	65	53312	45.28	ug/L	0.00
Spiked Amount	50.000	Range	60 - 135	Recovery	=	90.56%
7) Chloroethane-d5	1.57	69	40464	54.61	ug/L	0.00
Spiked Amount	50.000	Range	70 - 130	Recovery	=	109.22%
11) 1,1-Dichloroethene-d2	2.13	63	107634	38.71	ug/L	0.00
Spiked Amount	50.000	Range	60 - 125	Recovery	=	77.42%
21) 2-Butanone-d5	3.93	46	92735	117.96	ug/L	0.00
Spiked Amount	100.000	Range	40 - 130	Recovery	=	117.96%
24) Chloroform-d	4.41	84	123985	49.35	ug/L	0.00
Spiked Amount	50.000	Range	70 - 125	Recovery	=	98.70%
26) 1,2-Dichloroethane-d4	5.08	65	85211	53.25	ug/L	0.00
Spiked Amount	50.000	Range	70 - 125	Recovery	=	106.50%
32) Benzene-d6	5.10	84	259810	51.45	ug/L	0.00
Spiked Amount	50.000	Range	70 - 125	Recovery	=	102.90%
36) 1,2-Dichloropropane-d6	6.12	67	78150	51.50	ug/L	0.00
Spiked Amount	50.000	Range	70 - 120	Recovery	=	103.00%
41) Toluene-d8	7.36	98	240284	50.69	ug/L	0.00
Spiked Amount	50.000	Range	80 - 120	Recovery	=	101.38%
43) trans-1,3-Dichloropropene-	7.67	79	38230	49.68	ug/L	0.00
Spiked Amount	50.000	Range	60 - 125	Recovery	=	99.36%
47) 2-Hexanone-d5	8.13	63	60749	108.17	ug/L	0.00
Spiked Amount	100.000	Range	45 - 130	Recovery	=	108.17%
57) 1,1,2,2-Tetrachloroethane-	10.26	84	97163	49.60	ug/L	0.00
Spiked Amount	50.000	Range	65 - 120	Recovery	=	99.20%
64) 1,2-Dichlorobenzene-d4	11.68	152	86381	53.50	ug/L	0.00
Spiked Amount	50.000	Range	80 - 120	Recovery	=	107.00%

Target Compounds

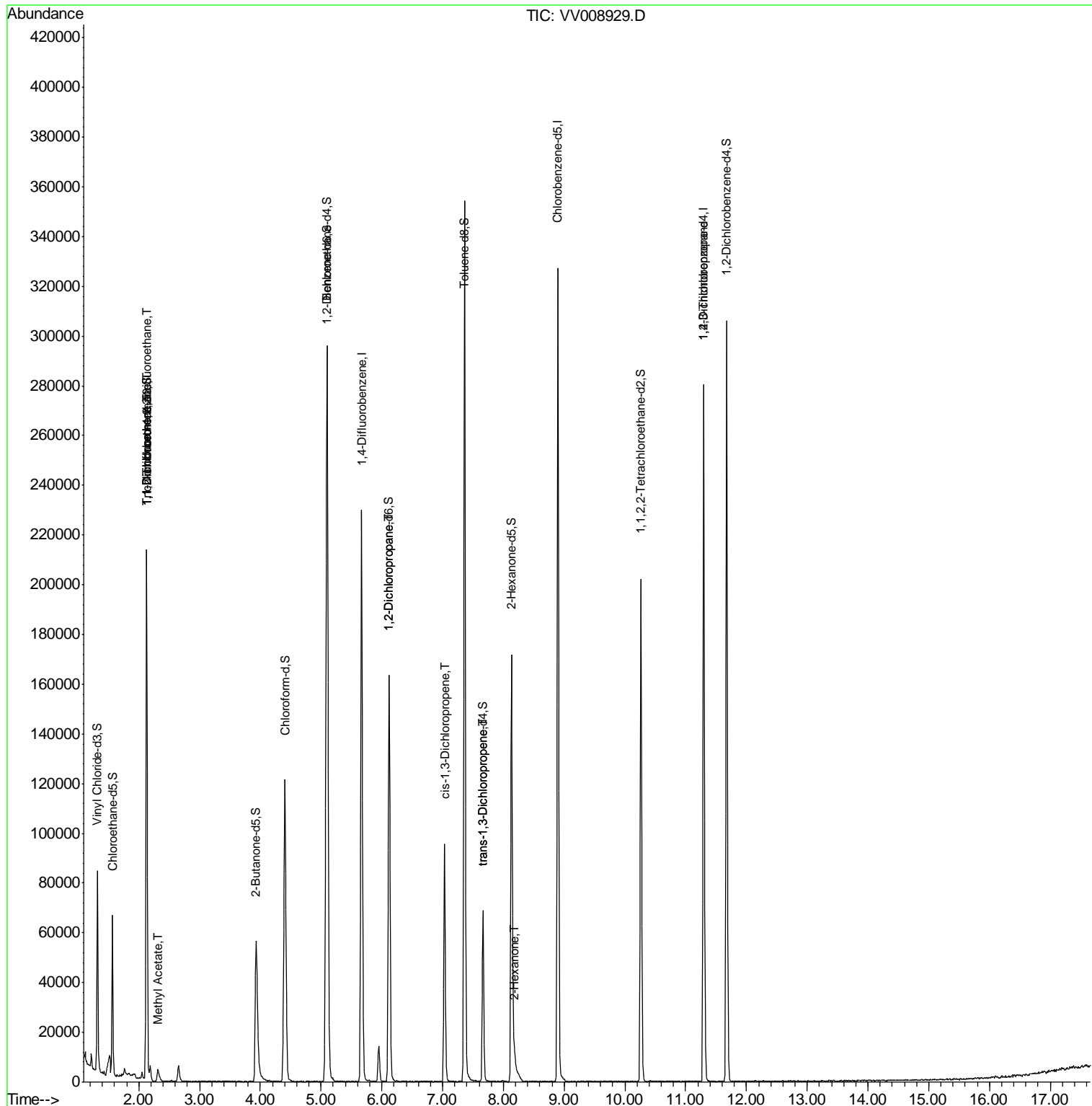
						Qvalue
9) Trichlorofluoromethane	2.13	101	1091	0.485	ug/L #	26
10) 1,1,2-Trichloro-1,2,2-trif	2.13	101	1091	0.793	ug/L #	18
12) 1,1-Dichloroethene	2.13	96	1004	0.802	ug/L #	1
15) Methyl Acetate	2.32	43	1568	1.226	ug/L #	49
37) 1,2-Dichloropropane	6.12	63	8905	6.668	ug/L #	86
39) cis-1,3-Dichloropropene	7.03	75	2327	1.093	ug/L #	28
44) trans-1,3-Dichloropropene	7.66	75	1551	0.781	ug/L	90
48) 2-Hexanone	8.19	43	2637	2.052	ug/L #	84
59) 1,2,3-Trichloropropane	11.30	75	7799	4.637	ug/L #	87

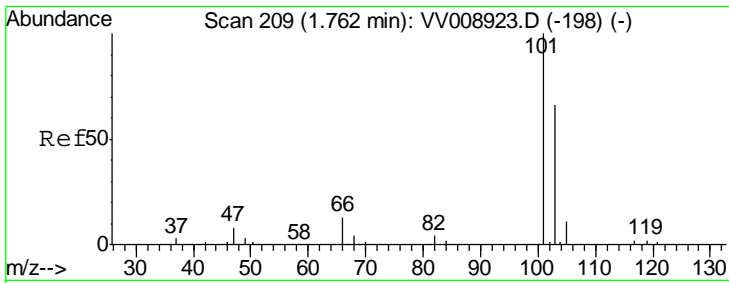
(#) = qualifier out of range (m) = manual integration (+) = signals summed

Data File : VV008929.D  
Acq On : 14 Dec 2018 15:05  
Operator : SY/MD  
Sample : J6367-15  
Misc : 5.0 mL/MSVOA\_V/WATER  
ALS Vial : 8 Sample Multiplier: 1

Instrument :  
MSVOA\_V  
ClientSampled :  
COL51

Quant Time: Dec 14 23:42:32 2018  
Quant Method : Z:\VOASRV\HPCHEM1\MSVOA\_V\METHOD\SOMVLM121318WMA.M  
Quant Title : VOC Analysis  
QLast Update : Fri Dec 14 23:39:04 2018  
Response via : Initial Calibration

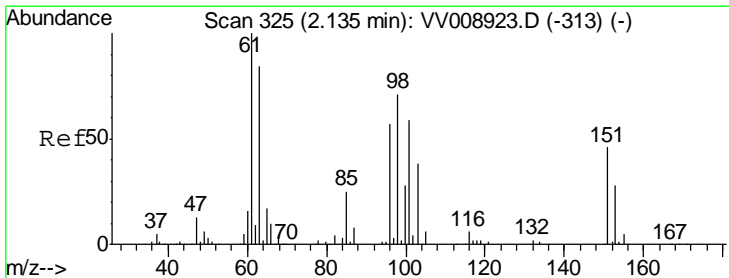
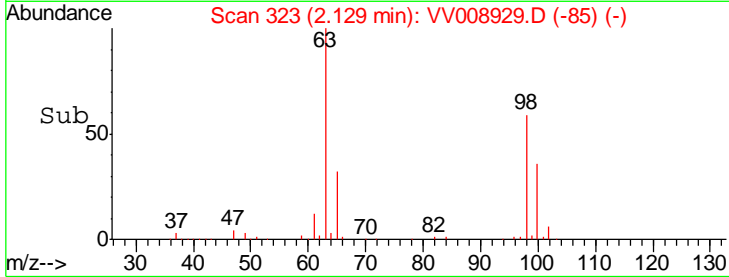
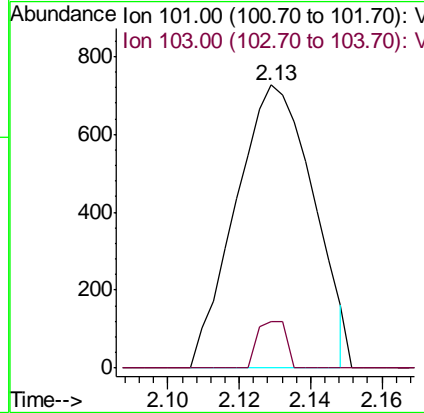
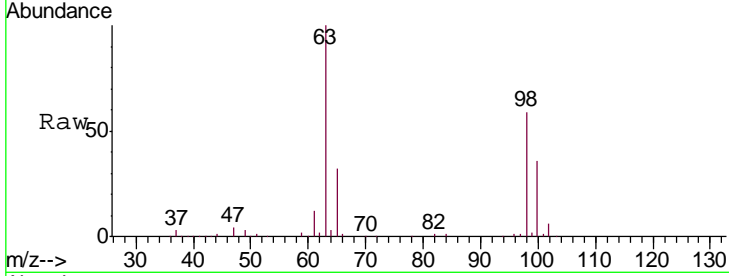




#9  
 Trichlorofluoromethane  
 Concen: 0.485 ug/L  
 RT: 2.13 min Scan# 323  
 Delta R.T. 0.37 min  
 Lab File: VV008929.D  
 Acq: 14 Dec 2018 15:05

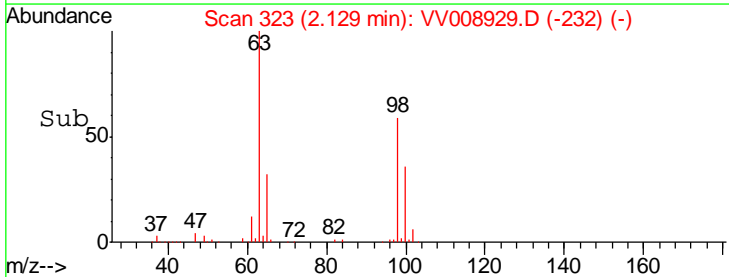
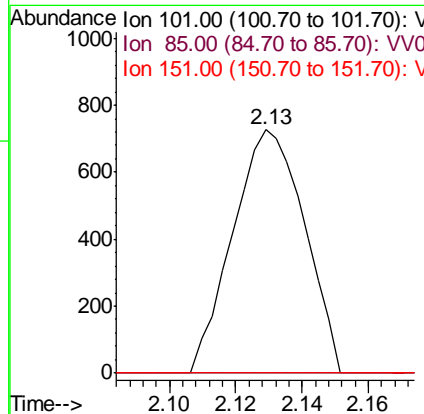
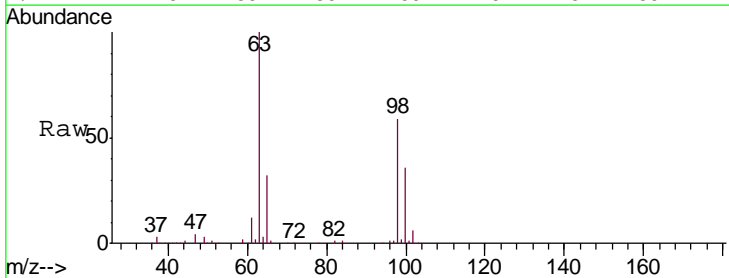
Instrument :  
 MSVOA\_V  
 ClientSampled :  
 COL51

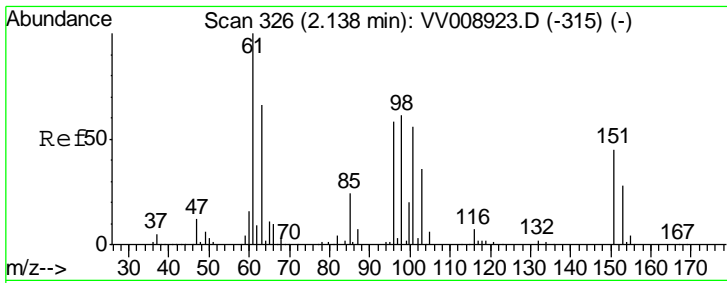
Tgt Ion:101 Resp: 1091  
 Ion Ratio Lower Upper  
 101 100  
 103 6.0 51.5 77.3#



#10  
 1,1,2-Trichloro-1,2,2-trifluoroethane  
 Concen: 0.793 ug/L  
 RT: 2.13 min Scan# 323  
 Delta R.T. -0.01 min  
 Lab File: VV008929.D  
 Acq: 14 Dec 2018 15:05

Tgt Ion:101 Resp: 1091  
 Ion Ratio Lower Upper  
 101 100  
 85 0.0 34.6 52.0#  
 151 0.0 63.8 95.8#

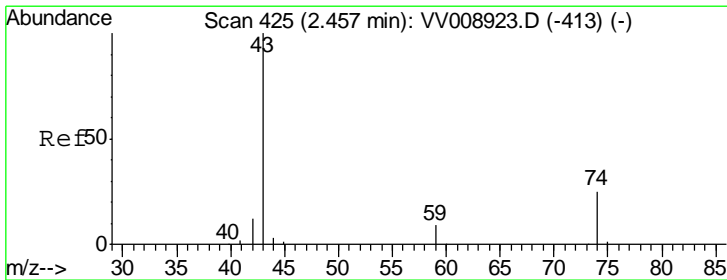
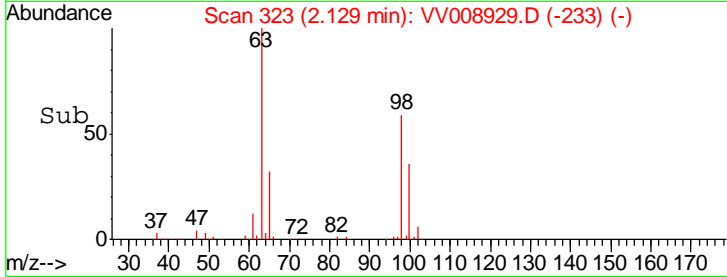
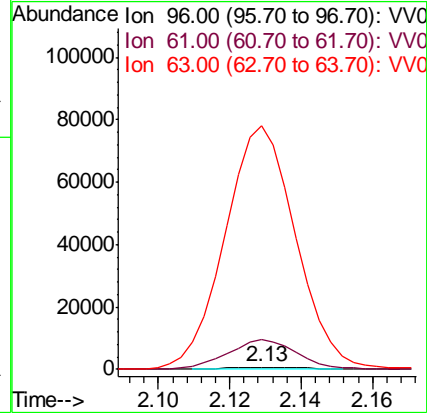
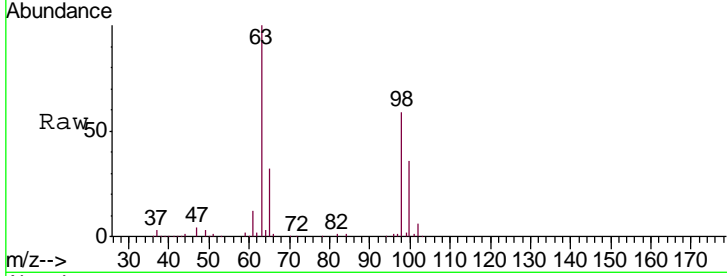




#12  
 1,1-Dichloroethene  
 Concen: 0.802 ug/L  
 RT: 2.13 min Scan# 323  
 Delta R.T. -0.01 min  
 Lab File: VV008929.D  
 Acq: 14 Dec 2018 15:05

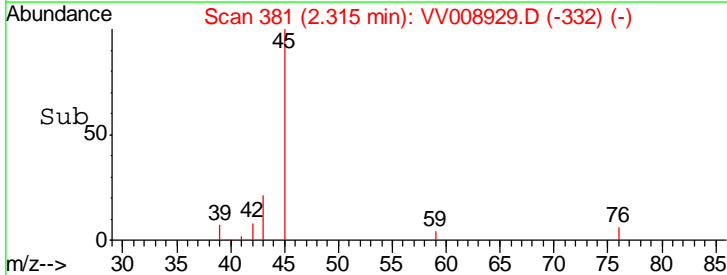
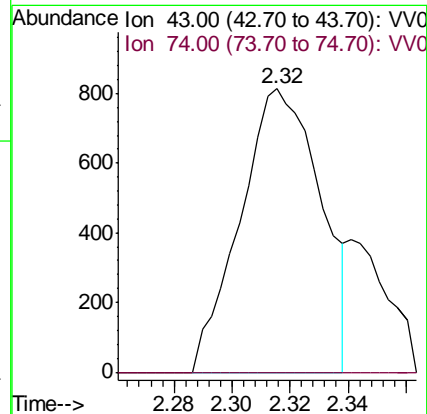
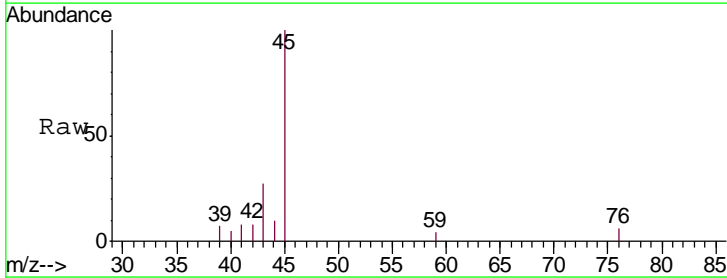
Instrument :  
 MSVOA\_V  
 ClientSampled :  
 COL51

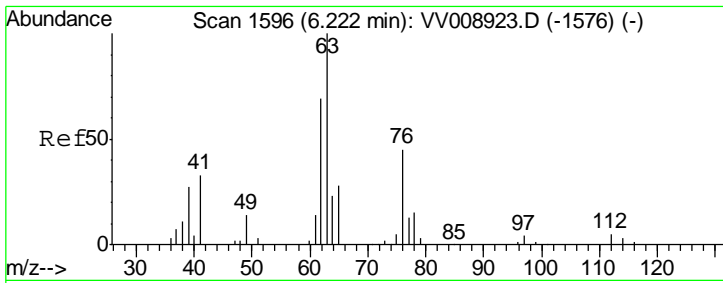
Tgt Ion: 96 Resp: 1004  
 Ion Ratio Lower Upper  
 96 100  
 61 1288.3 119.1 221.3#  
 63 10628.9 96.0 178.2#



#15  
 Methyl Acetate  
 Concen: 1.226 ug/L  
 RT: 2.32 min Scan# 381  
 Delta R.T. -0.14 min  
 Lab File: VV008929.D  
 Acq: 14 Dec 2018 15:05

Tgt Ion: 43 Resp: 1568  
 Ion Ratio Lower Upper  
 43 100  
 74 0.0 21.0 31.6#

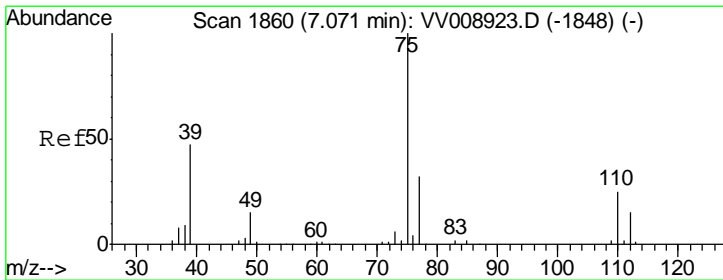
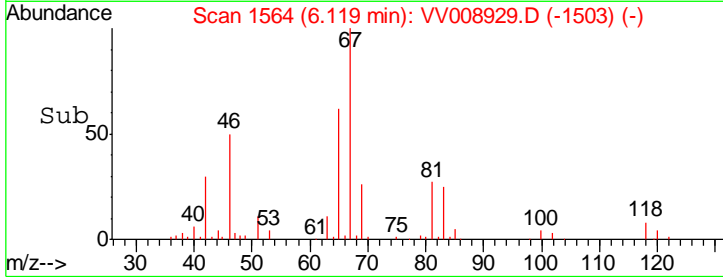
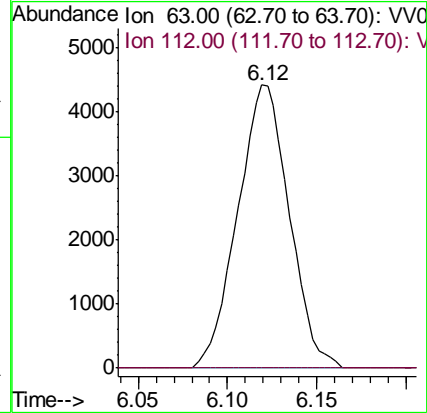
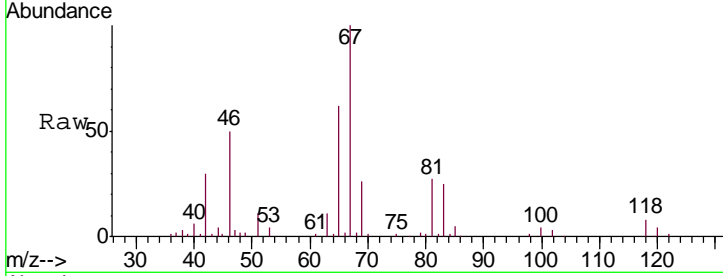




#37  
 1,2-Dichloropropane  
 Concen: 6.668 ug/L  
 RT: 6.12 min Scan# 1564  
 Delta R.T. -0.10 min  
 Lab File: VV008929.D  
 Acq: 14 Dec 2018 15:05

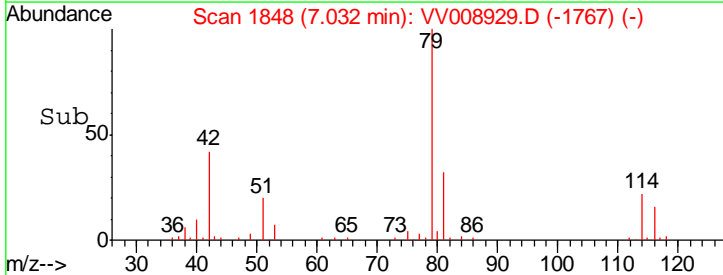
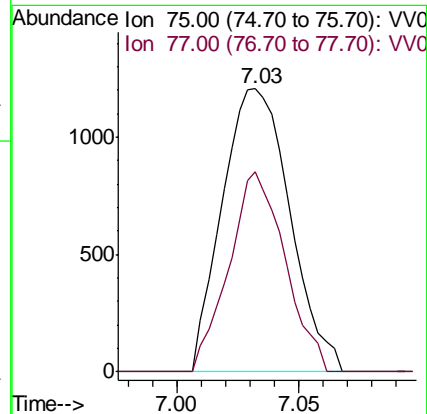
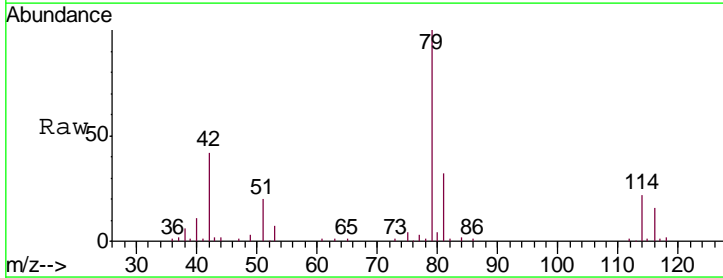
Instrument :  
 MSVOA\_V  
 ClientSampled :  
 COL51

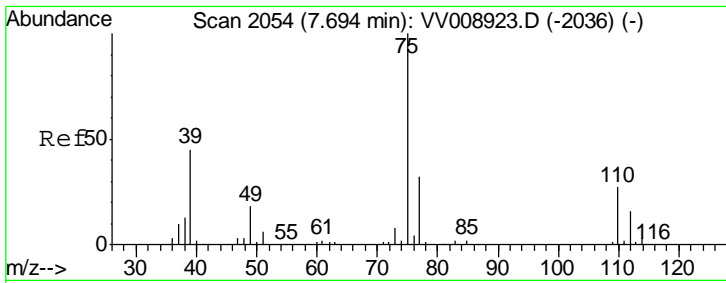
Tgt Ion: 63 Resp: 8905  
 Ion Ratio Lower Upper  
 63 100  
 112 0.0 3.8 5.6#



#39  
 cis-1,3-Dichloropropene  
 Concen: 1.093 ug/L  
 RT: 7.03 min Scan# 1848  
 Delta R.T. -0.04 min  
 Lab File: VV008929.D  
 Acq: 14 Dec 2018 15:05

Tgt Ion: 75 Resp: 2327  
 Ion Ratio Lower Upper  
 75 100  
 77 70.6 21.8 40.4#

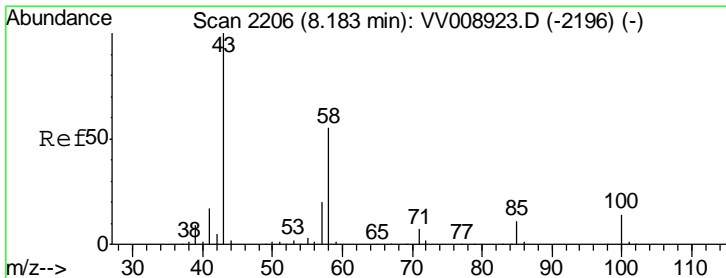
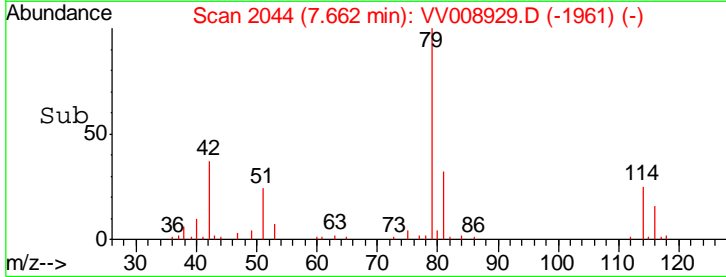
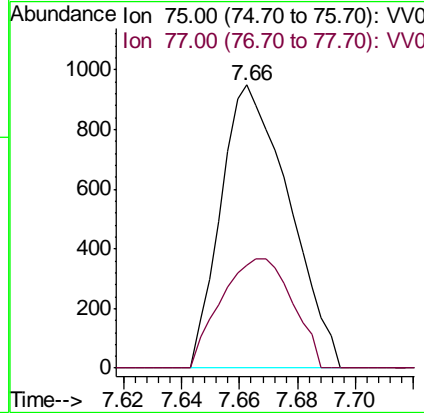
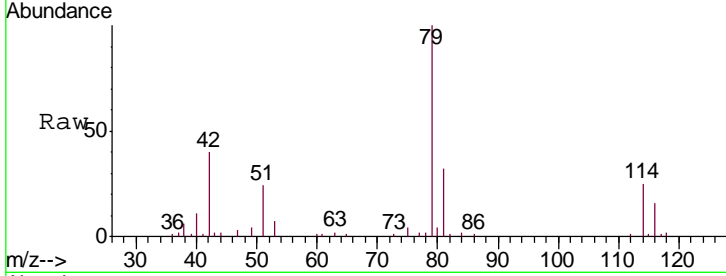




#44  
 trans-1,3-Dichloropropene  
 Concen: 0.781 ug/L  
 RT: 7.66 min Scan# 2044  
 Delta R.T. -0.03 min  
 Lab File: VV008929.D  
 Acq: 14 Dec 2018 15:05

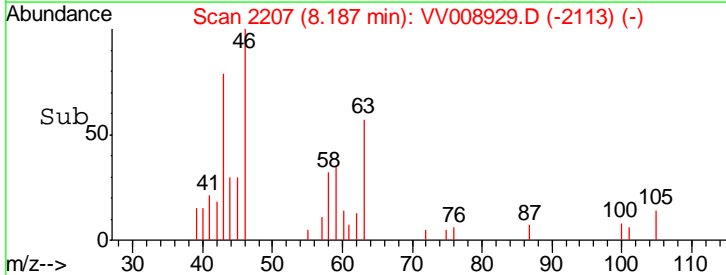
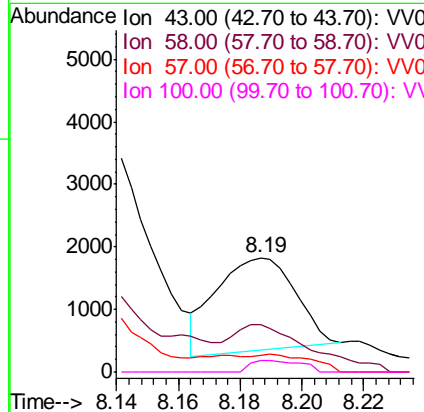
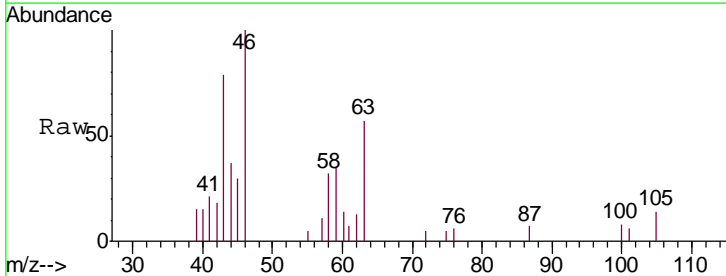
Instrument : MSVOA\_V  
 ClientSampled : COL51

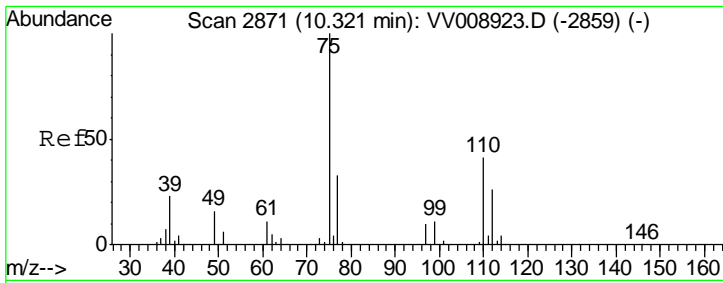
Tgt Ion	Resp	Lower	Upper
75	1551		
77	36.3	21.6	40.2



#48  
 2-Hexanone  
 Concen: 2.052 ug/L  
 RT: 8.19 min Scan# 2207  
 Delta R.T. 0.00 min  
 Lab File: VV008929.D  
 Acq: 14 Dec 2018 15:05

Tgt Ion	Resp	Lower	Upper
43	2637		
58	50.0	42.7	64.1
57	0.0	15.7	23.5#
100	5.9	11.3	16.9#





#59  
 1,2,3-Trichloropropane  
 Concen: 4.637 ug/L  
 RT: 11.30 min Scan# 3174  
 Delta R.T. 0.97 min  
 Lab File: VV008929.D  
 Acq: 14 Dec 2018 15:05

Instrument : MSVOA\_V  
 ClientSampled : COL51

Tgt Ion: 75 Resp: 7799  
 Ion Ratio Lower Upper  
 75 100  
 77 39.7 25.8 38.8#

