

Data Path : Z:\VOASRV\HPCHEM1\MSVOA V\DATA\VV121418\  
 Data File : VV008937.D  
 Acq On : 14 Dec 2018 18:17  
 Operator : SY/MD  
 Sample : J6369-03  
 Misc : 5.0 mL/MSVOA V/WATER  
 ALS Vial : 16 Sample Multiplier: 1

Instrument :  
 MSVOA\_V  
 ClientSampleId :  
 COL59

Integration Parameters: LSCINT.P

Integrator: RTE  
 Smoothing : OFF  
 Sampling : 1  
 Start Thrs: 0.2  
 Stop Thrs : 0

Filtering: 5  
 Min Area: 0 % of largest Peak  
 Max Peaks: 100  
 Peak Location: TOP

If leading or trailing edge < 100 prefer < Baseline drop else tangent >  
 Peak separation: 5

Method : Z:\VOASRV\HPCHEM1\MSVOA\_V\METHOD\SOMVLM121318WMA.M  
 Title : VOC Analysis

Signal : TIC

peak #	R.T. min	first scan	max scan	last scan	PK TY	peak height	corr. area	corr. % max.	% of total
1	1.322	66	72	90	rVB	77416	89084	12.16%	1.613%
2	1.563	142	147	165	rVB	62074	71748	9.80%	1.299%
3	2.129	313	323	335	rBV	209290	296137	40.44%	5.363%
4	2.499	436	438	442	rBV	189	137	0.02%	0.002%
5	2.518	442	444	446	rBV	185	120	0.02%	0.002%
6	2.653	475	486	501	rVV2	9069	18453	2.52%	0.334%
7	2.917	565	568	569	rBV	160	109	0.01%	0.002%
8	3.074	614	617	622	rBV	174	113	0.02%	0.002%
9	3.241	666	669	672	rBV2	244	197	0.03%	0.004%
10	3.495	743	748	752	rBV	271	315	0.04%	0.006%
11	3.617	784	786	787	rBV	229	113	0.02%	0.002%
12	3.666	795	801	805	rBV	194	295	0.04%	0.005%
13	3.933	870	884	912	rBV	54474	155660	21.25%	2.819%
14	4.109	936	939	940	rBV	416	266	0.04%	0.005%
15	4.248	979	982	983	rBV	226	128	0.02%	0.002%
16	4.302	995	999	1000	rBV2	247	196	0.03%	0.004%
17	4.341	1007	1011	1013	rBV2	183	159	0.02%	0.003%
18	4.405	1013	1031	1054	rBV	118039	288429	39.38%	5.223%
19	4.560	1076	1079	1082	rBV	401	341	0.05%	0.006%
20	4.617	1094	1097	1100	rBB2	378	237	0.03%	0.004%
21	4.637	1101	1103	1105	rBV	173	123	0.02%	0.002%
22	4.662	1108	1111	1114	rVV	293	180	0.02%	0.003%
23	4.733	1128	1133	1135	rBV	140	176	0.02%	0.003%
24	4.762	1138	1142	1144	rBV	210	181	0.02%	0.003%
25	4.907	1185	1187	1191	rVB	275	182	0.02%	0.003%
26	4.936	1192	1196	1200	rBV2	331	402	0.05%	0.007%
27	4.971	1205	1207	1211	rVB	193	145	0.02%	0.003%
28	5.000	1211	1216	1218	rBV2	149	128	0.02%	0.002%
29	5.026	1222	1224	1228	rBV	141	108	0.01%	0.002%
30	5.096	1228	1246	1273	rBV2	293744	732360	100.00%	13.262%
31	5.328	1314	1318	1321	rVB2	476	389	0.05%	0.007%
32	5.351	1322	1325	1326	rBV	312	223	0.03%	0.004%
33	5.437	1348	1352	1354	rBV	206	159	0.02%	0.003%
34	5.511	1373	1375	1377	rBV2	332	151	0.02%	0.003%

Data Path : Z:\VOASRV\HPCHEM1\MSVOA V\DATA\VV121418\  
 Data File : VV008937.D  
 Acq On : 14 Dec 2018 18:17  
 Operator : SY/MD  
 Sample : J6369-03  
 Misc : 5.0 mL/MSVOA V/WATER  
 ALS Vial : 16 Sample Multiplier: 1

Instrument :  
 MSVOA\_V  
 ClientSampleId :  
 COL59

## Integration Parameters: LSCINT.P

Integrator: RTE  
 Smoothing : OFF  
 Sampling : 1  
 Start Thrs: 0.2  
 Stop Thrs : 0

Filtering: 5  
 Min Area: 0 % of largest Peak  
 Max Peaks: 100  
 Peak Location: TOP

If leading or trailing edge < 100 prefer < Baseline drop else tangent >  
 Peak separation: 5

Method : Z:\VOASRV\HPCHEM1\MSVOA\_V\METHOD\SOMVLM121318WMA.M  
 Title : VOC Analysis

35	5.604	1401	1404	1405	rBV2	328	148	0.02%	0.003%
36	5.666	1409	1423	1449	rVV	228392	454114	62.01%	8.223%
37	5.949	1500	1511	1531	rVB4	15780	30921	4.22%	0.560%
38	6.026	1531	1535	1536	rBV	231	158	0.02%	0.003%
39	6.061	1543	1546	1547	rBV	152	106	0.01%	0.002%
40	6.119	1550	1564	1587	rVV	161352	325661	44.47%	5.897%
41	6.325	1626	1628	1630	rBV	254	147	0.02%	0.003%
42	6.370	1639	1642	1645	rVV	182	112	0.02%	0.002%
43	6.412	1652	1655	1658	rBV2	288	224	0.03%	0.004%
44	6.479	1672	1676	1678	rBV	240	222	0.03%	0.004%
45	6.566	1700	1703	1708	rBV2	225	210	0.03%	0.004%
46	6.633	1721	1724	1727	rBV	375	335	0.05%	0.006%
47	6.649	1727	1729	1735	rVB	192	135	0.02%	0.002%
48	6.694	1741	1743	1746	rBV	522	365	0.05%	0.007%
49	6.743	1756	1758	1763	rBV	234	196	0.03%	0.004%
50	6.785	1769	1771	1776	rBV2	194	185	0.03%	0.003%
51	6.836	1782	1787	1789	rBV	197	219	0.03%	0.004%
52	6.849	1789	1791	1795	rVB	291	198	0.03%	0.004%
53	6.871	1795	1798	1801	rBV	340	251	0.03%	0.005%
54	6.891	1801	1804	1806	rVB	281	194	0.03%	0.004%
55	6.910	1807	1810	1813	rBV	321	235	0.03%	0.004%
56	6.939	1814	1819	1824	rVB2	238	225	0.03%	0.004%
57	6.987	1831	1834	1836	rBV2	263	186	0.03%	0.003%
58	7.032	1836	1848	1869	rBV	93691	165245	22.56%	2.992%
59	7.141	1880	1882	1885	rBV2	291	119	0.02%	0.002%
60	7.276	1920	1924	1927	rVB2	316	273	0.04%	0.005%
61	7.302	1927	1932	1937	rBV	212	293	0.04%	0.005%
62	7.360	1937	1950	1968	rBV	346806	602533	82.27%	10.911%
63	7.611	2026	2028	2032	rVB	293	194	0.03%	0.004%
64	7.666	2032	2045	2059	rBV	65843	111094	15.17%	2.012%
65	7.839	2096	2099	2103	rBV	242	218	0.03%	0.004%
66	7.881	2109	2112	2117	rBV2	149	106	0.01%	0.002%
67	7.984	2138	2144	2147	rBV2	522	558	0.08%	0.010%
68	8.135	2178	2191	2222	rBV	166996	344633	47.06%	6.241%
69	8.334	2250	2253	2258	rBV	311	311	0.04%	0.006%
70	8.363	2259	2262	2268	rVB2	252	270	0.04%	0.005%
71	8.582	2326	2330	2332	rBV2	208	168	0.02%	0.003%

Data Path : Z:\VOASRV\HPCHEM1\MSVOA V\DATA\VV121418\  
 Data File : VV008937.D  
 Acq On : 14 Dec 2018 18:17  
 Operator : SY/MD  
 Sample : J6369-03  
 Misc : 5.0 mL/MSVOA V/WATER  
 ALS Vial : 16 Sample Multiplier: 1

Instrument :  
 MSVOA\_V  
 ClientSampleId :  
 COL59

## Integration Parameters: LSCINT.P

Integrator: RTE  
 Smoothing : OFF  
 Sampling : 1  
 Start Thrs: 0.2  
 Stop Thrs : 0

Filtering: 5  
 Min Area: 0 % of largest Peak  
 Max Peaks: 100  
 Peak Location: TOP

If leading or trailing edge < 100 prefer < Baseline drop else tangent >  
 Peak separation: 5

Method : Z:\VOASRV\HPCHEM1\MSVOA\_V\METHOD\SOMVLM121318WMA.M  
 Title : VOC Analysis

72	8.643	2347	2349	2357	rVB2	217	209	0.03%	0.004%
73	8.801	2396	2398	2403	rVB2	174	122	0.02%	0.002%
74	8.897	2415	2428	2445	rBV	327561	536438	73.25%	9.714%
75	9.067	2478	2481	2484	rBV	200	155	0.02%	0.003%
76	9.257	2534	2540	2541	rBV	209	181	0.02%	0.003%
77	9.289	2547	2550	2554	rVB2	165	122	0.02%	0.002%
78	9.527	2621	2624	2628	rBV2	202	183	0.02%	0.003%
79	9.604	2645	2648	2652	rVB2	346	289	0.04%	0.005%
80	9.653	2658	2663	2667	rBV2	284	409	0.06%	0.007%
81	9.727	2683	2686	2690	rBV2	205	132	0.02%	0.002%
82	9.971	2759	2762	2764	rBV	159	110	0.02%	0.002%
83	10.022	2775	2778	2781	rVB2	225	131	0.02%	0.002%
84	10.054	2785	2788	2794	rVB2	232	266	0.04%	0.005%
85	10.202	2832	2834	2838	rBV2	166	115	0.02%	0.002%
86	10.263	2841	2853	2876	rVB	201622	324234	44.27%	5.871%
87	10.653	2971	2974	2977	rVB2	213	147	0.02%	0.003%
88	10.672	2977	2980	2988	rVB2	205	253	0.03%	0.005%
89	10.858	3033	3038	3041	rBV2	221	240	0.03%	0.004%
90	10.939	3060	3063	3065	rBV	196	126	0.02%	0.002%
91	11.061	3098	3101	3102	rBV	181	113	0.02%	0.002%
92	11.132	3121	3123	3132	rVB	329	261	0.04%	0.005%
93	11.296	3162	3174	3192	rBV	279463	461647	63.04%	8.360%
94	11.392	3199	3204	3205	rBV	239	183	0.02%	0.003%
95	11.675	3280	3292	3309	rBV	298682	497401	67.92%	9.007%
96	12.257	3470	3473	3476	rBV	210	177	0.02%	0.003%
97	12.395	3513	3516	3523	rVB2	253	231	0.03%	0.004%
98	12.691	3605	3608	3612	rBV	268	210	0.03%	0.004%
99	12.730	3617	3620	3622	rBV	187	130	0.02%	0.002%
100	12.855	3656	3659	3662	rVB	247	162	0.02%	0.003%

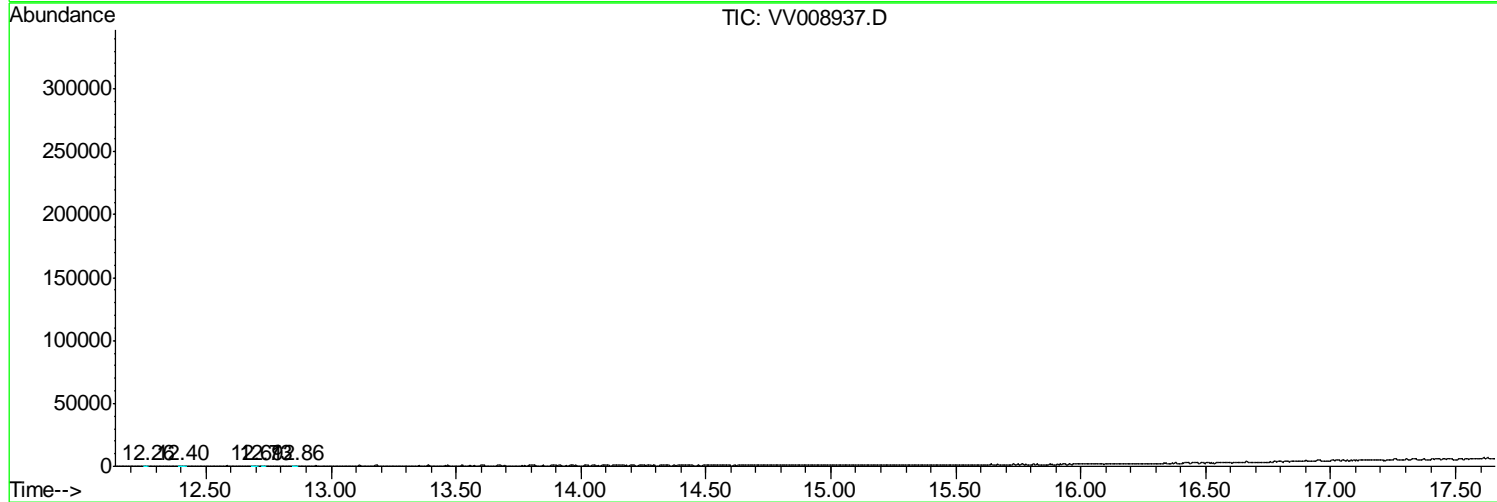
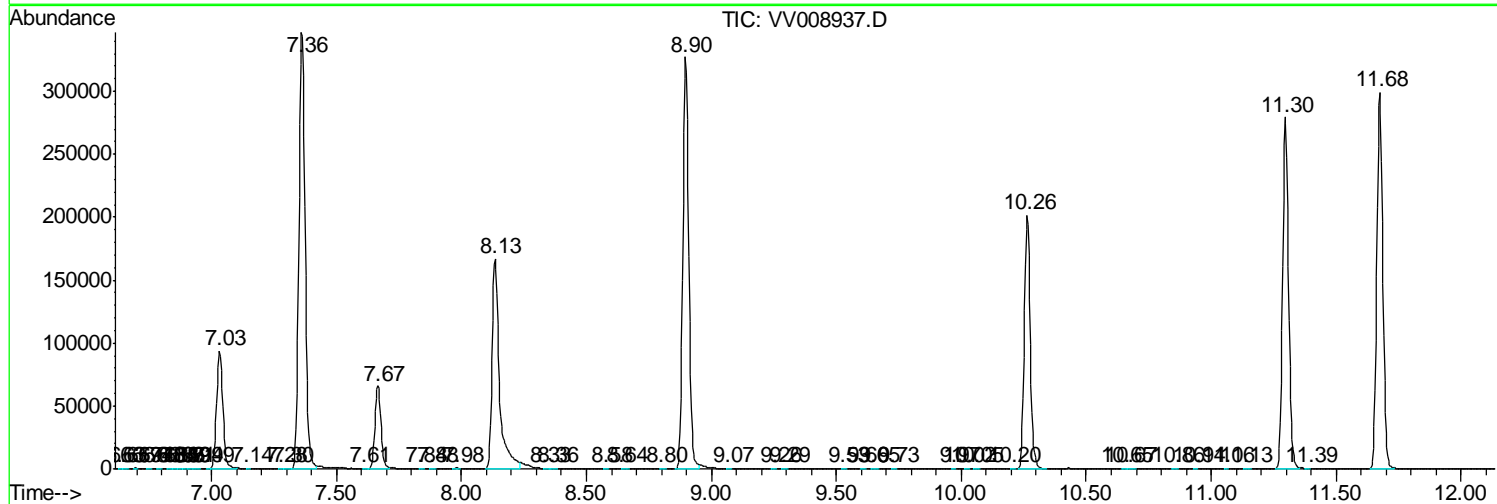
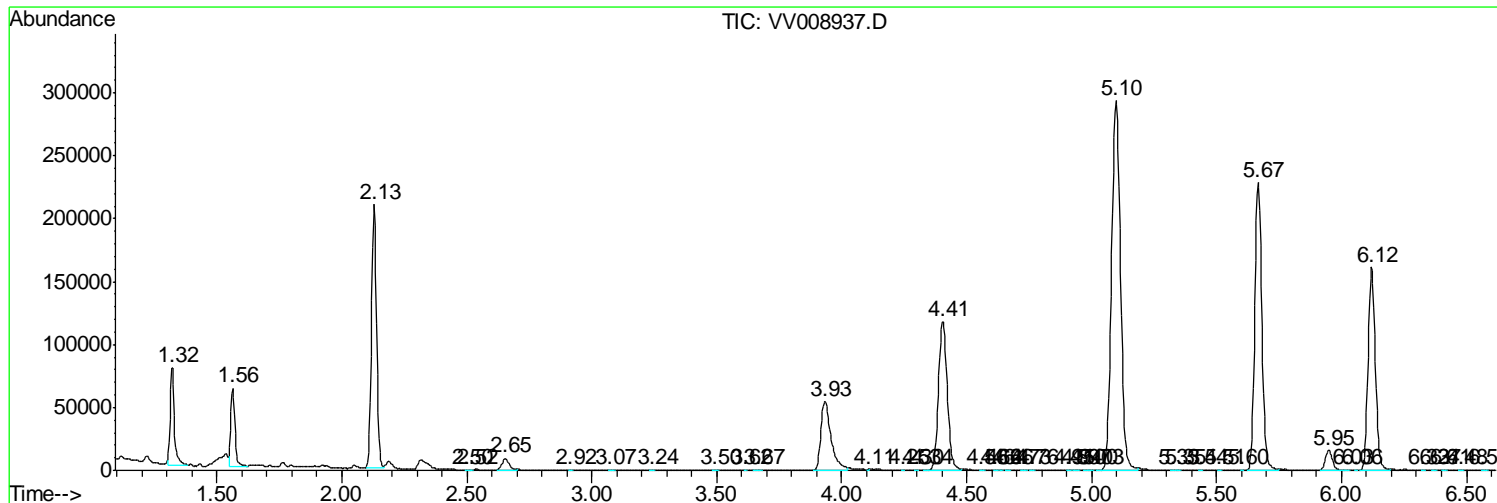
Sum of corrected areas: 5522283

Data Path : Z:\VOASRV\HPCHEM1\MSVOA V\DATA\VV121418\  
 Data File : VV008937.D  
 Acq On : 14 Dec 2018 18:17  
 Operator : SY/MD  
 Sample : J6369-03  
 Misc : 5.0 mL/MSVOA V/WATER  
 ALS Vial : 16 Sample Multiplier: 1

Instrument :  
 MSVOA\_V  
 Client Sampled :  
 COL59

Quant Method : Z:\VOASRV\HPCHEM1\MSVOA\_V\METHOD\SOMVLM121318WMA.M  
 Quant Title : VOC Analysis

TIC Library : C:\DATABASE\NIST11.L  
 TIC Integration Parameters: LSCINT.P



Data Path : Z:\VOASRV\HPCHEM1\MSVOA V\DATA\VV121418\  
 Data File : VV008937.D  
 Acq On : 14 Dec 2018 18:17  
 Operator : SY/MD  
 Sample : J6369-03  
 Misc : 5.0 mL/MSVOA V/WATER  
 ALS Vial : 16 Sample Multiplier: 1

Instrument :  
 MSVOA\_V  
 ClientSampleID :  
 COL59

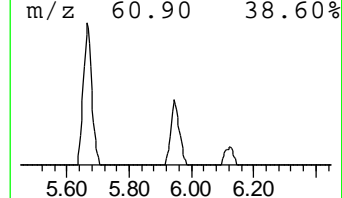
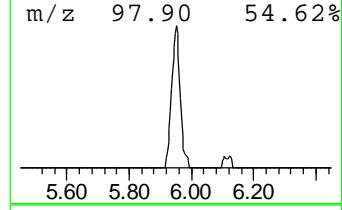
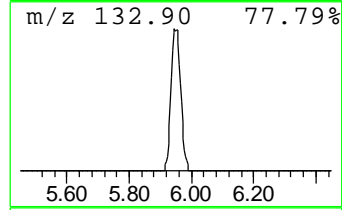
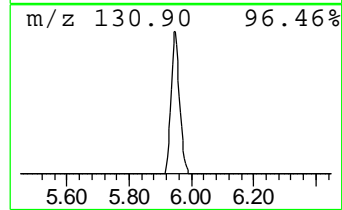
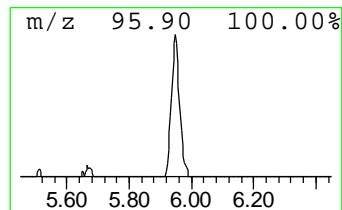
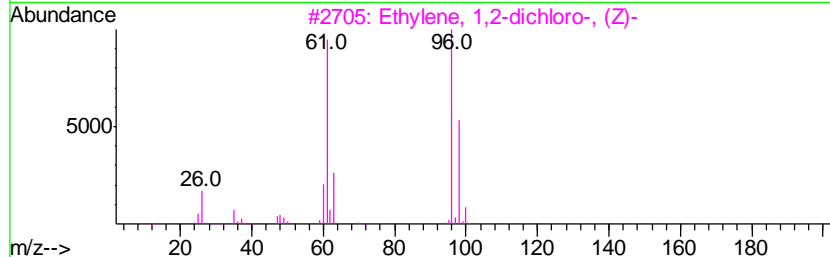
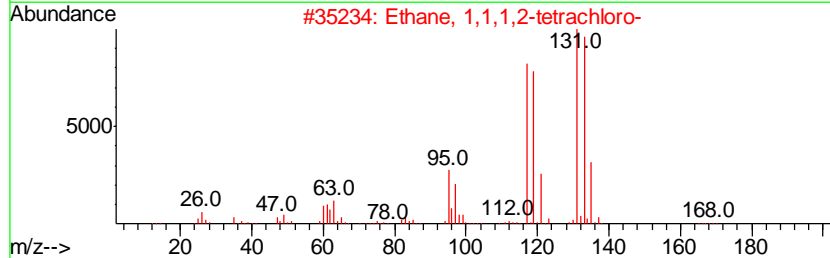
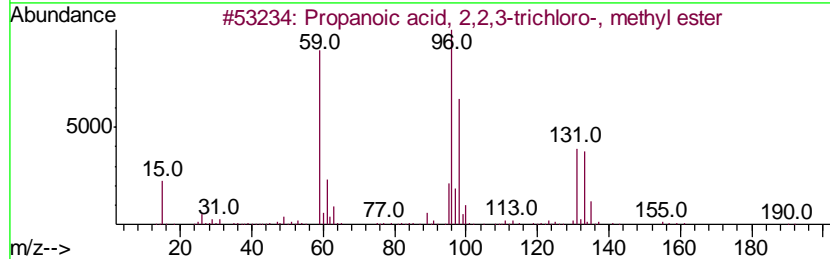
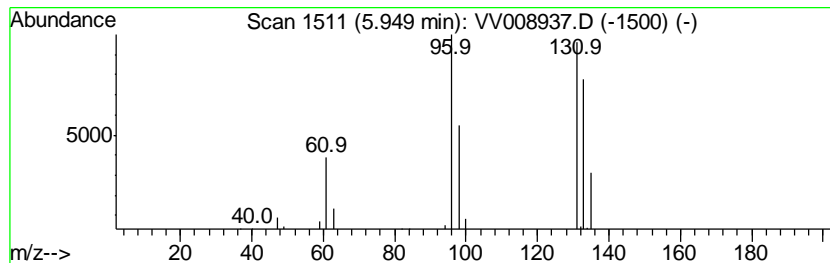
Quant Method : Z:\VOASRV\HPCHEM1\MSVOA\_V\METHOD\SOMVLM121318WMA.M  
 Quant Title : VOC Analysis

TIC Library : C:\DATABASE\NIST11.L  
 TIC Integration Parameters: LSCINT.P

\*\*\*\*\*  
 Peak Number 1 Propanoic acid, 2,2,3-trich... Concentration Rank 2

R.T.	EstConc	Area	Relative to ISTD	R.T.
5.95	3.40 ug/L	30921	1,4-Difluorobenzene	5.67

Hit#	of	Tentative ID	MW	MolForm	CAS#	Qual
1	5	Propanoic acid, 2,2,3-trichloro-...	190	C4H5Cl3O2	004749-35-3	56
2		Ethane, 1,1,1,2-tetrachloro-	166	C2H2Cl4	000630-20-6	43
3		Ethylene, 1,2-dichloro-, (Z)-	96	C2H2Cl2	000156-59-2	35
4		Carbamic acid, acetylthio-, O-me...	133	C4H7NO2S	016696-87-0	10
5		Benzonitrile, 4-methoxy-	133	C8H7NO	000874-90-8	9



Data Path : Z:\VOASRV\HPCHEM1\MSVOA\_V\DATA\VV121418\  
Data File : VV008937.D  
Acq On : 14 Dec 2018 18:17  
Operator : SY/MD  
Sample : J6369-03  
Misc : 5.0 mL/MSVOA\_V/WATER  
ALS Vial : 16 Sample Multiplier: 1

Instrument :  
MSVOA\_V  
ClientSampleId :  
COL59

Quant Method : Z:\VOASRV\HPCHEM1\MSVOA\_V\METHOD\SOMVLM121318WMA.M  
Quant Title : VOC Analysis

TIC Library : C:\DATABASE\NIST11.L  
TIC Integration Parameters: LSCINT.P

TIC Top Hit name	RT	EstConc	Units	Response	--Internal Standard--			
					#	RT	Resp	Conc
Propanoic acid, 2...	5.95	3.4	ug/L	30921	1	5.67	454114	50.0