

Data Path : Z:\VOASRV\HPCHEM1\MSVOA_V\DATA\VV121420\
 Data File : VV019628.D
 Acq On : 15 Dec 2020 01:29
 Operator : SY/MD
 Sample : L4998-18
 Misc : 5.0mL/MSVOA_V/WATER
 ALS Vial : 4 Sample Multiplier: 1

Instrument :
 MSVOA_V
 ClientSampleId :
 C0AW8

Quant Time: Dec 15 10:30:48 2020
 Quant Method : Z:\VOASRV\HPCHEM1\MSVOA_V\METHOD\SOMVLM121020WMA.M
 Quant Title : VOC Analysis
 QLast Update : Tue Dec 15 10:26:59 2020
 Response via : Initial Calibration

Internal Standards	R.T.	QIon	Response	Conc	Units	Dev(Min)
1) 1,4-Difluorobenzene	5.62	114	599385	50.00	ug/L	0.00
28) Chlorobenzene-d5	8.86	117	560850	50.00	ug/L	0.00
60) 1,4-Dichlorobenzene-d4	11.25	152	256545	50.00	ug/L	0.00

System Monitoring Compounds

4) Vinyl Chloride-d3	1.31	65	199291	46.37	ug/L	0.00
Spiked Amount	50.000	Range	60 - 135	Recovery	=	92.74%
7) Chloroethane-d5	1.57	69	173729	51.25	ug/L	0.00
Spiked Amount	50.000	Range	70 - 130	Recovery	=	102.50%
11) 1,1-Dichloroethene-d2	2.11	63	305782	38.33	ug/L	0.00
Spiked Amount	50.000	Range	60 - 125	Recovery	=	76.66%
21) 2-Butanone-d5	3.90	46	270926	115.97	ug/L	0.00
Spiked Amount	100.000	Range	40 - 130	Recovery	=	115.97%
24) Chloroform-d	4.35	84	397387	51.30	ug/L	0.00
Spiked Amount	50.000	Range	70 - 125	Recovery	=	102.60%
26) 1,2-Dichloroethane-d4	5.04	65	280802	55.47	ug/L	0.00
Spiked Amount	50.000	Range	70 - 125	Recovery	=	110.94%
32) Benzene-d6	5.05	84	786756	52.60	ug/L	0.00
Spiked Amount	50.000	Range	70 - 125	Recovery	=	105.20%
36) 1,2-Dichloropropane-d6	6.07	67	254572	54.33	ug/L	0.00
Spiked Amount	50.000	Range	70 - 120	Recovery	=	108.66%
41) Toluene-d8	7.32	98	691424	51.34	ug/L	0.00
Spiked Amount	50.000	Range	80 - 120	Recovery	=	102.68%
43) trans-1,3-Dichloropropene-	7.62	79	121726	45.67	ug/L	0.00
Spiked Amount	50.000	Range	60 - 125	Recovery	=	91.34%
47) 2-Hexanone-d5	8.09	63	186300	101.30	ug/L	0.00
Spiked Amount	100.000	Range	45 - 130	Recovery	=	101.30%
57) 1,1,2,2-Tetrachloroethane-	10.22	84	332497	52.46	ug/L	0.00
Spiked Amount	50.000	Range	65 - 120	Recovery	=	104.92%
64) 1,2-Dichlorobenzene-d4	11.63	152	255829	53.35	ug/L	0.00
Spiked Amount	50.000	Range	80 - 120	Recovery	=	106.70%

Target Compounds

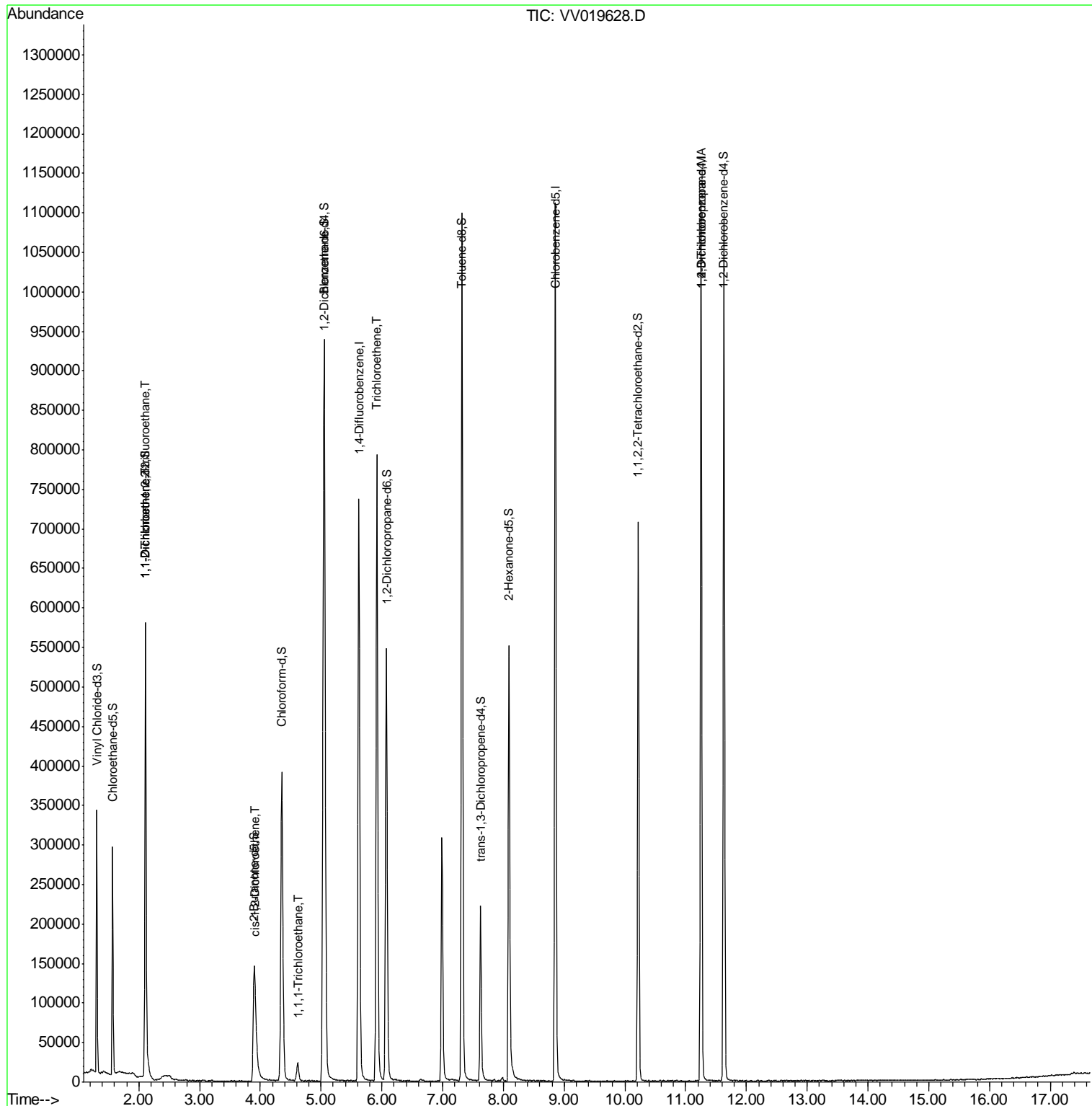
Target Compounds	R.T.	QIon	Response	Conc	Units	Qvalue
10) 1,1,2-Trichloro-1,2,2-trif	2.11	101	2773	0.797	ug/L #	22
12) 1,1-Dichloroethene	2.12	96	17397	4.872	ug/L #	1
20) cis-1,2-Dichloroethene	3.92	96	9706	2.256	ug/L #	92
30) 1,1,1-Trichloroethane	4.61	97	17061	2.426	ug/L	97
34) Trichloroethene	5.92	95	281916	65.108	ug/L	98
59) 1,2,3-Trichloropropane	11.25	75	34686	6.515	ug/L	91

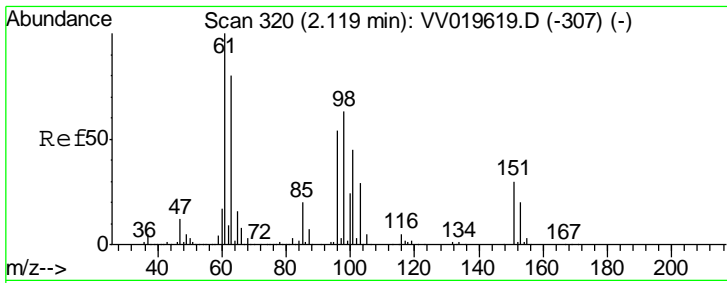
(#) = qualifier out of range (m) = manual integration (+) = signals summed

Data Path : Z:\VOASRV\HPCHEM1\MSVOA_V\DATA\VV121420\
 Data File : VV019628.D
 Acq On : 15 Dec 2020 01:29
 Operator : SY/MD
 Sample : L4998-18
 Misc : 5.0mL/MSVOA_V/WATER
 ALS Vial : 4 Sample Multiplier: 1

Instrument :
 MSVOA_V
 ClientSampled :
 C0AW8

Quant Time: Dec 15 10:30:48 2020
 Quant Method : Z:\VOASRV\HPCHEM1\MSVOA_V\METHOD\SOMVLM121020WMA.M
 Quant Title : VOC Analysis
 QLast Update : Tue Dec 15 10:26:59 2020
 Response via : Initial Calibration

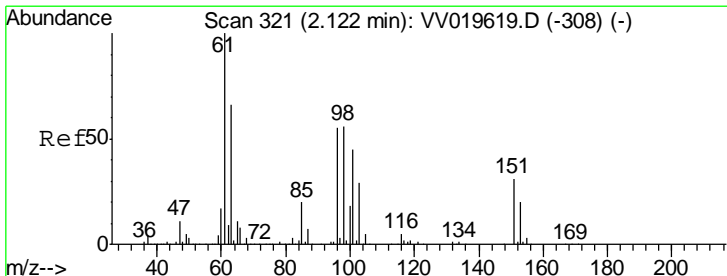
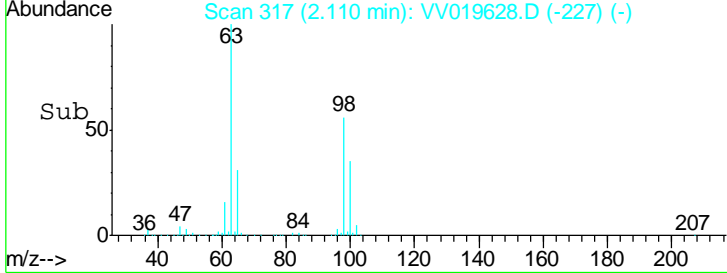
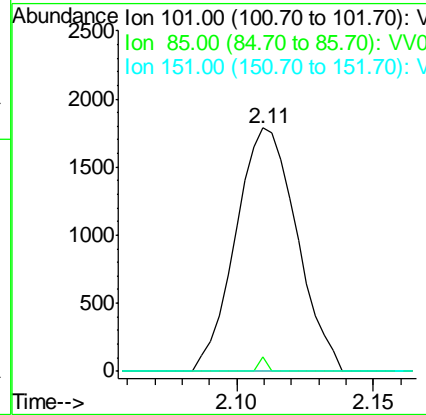
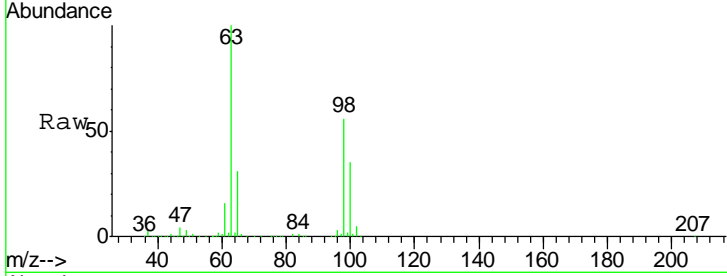




#10
 1,1,2-Trichloro-1,2,2-trifluoroethane
 Concen: 0.797 ug/L
 RT: 2.11 min Scan# 317
 Delta R.T. -0.01 min
 Lab File: VV019628.D
 Acq: 15 Dec 2020 01:29

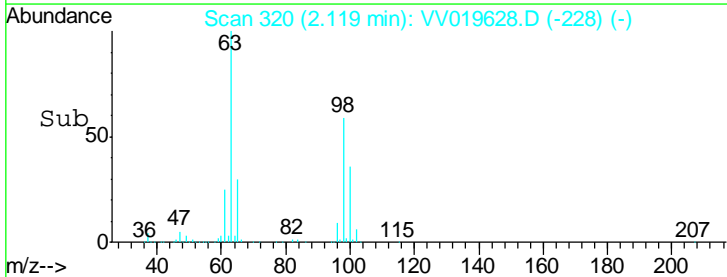
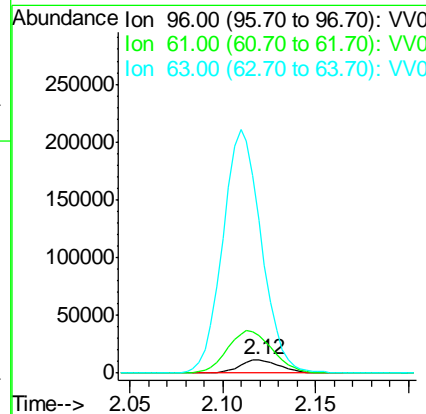
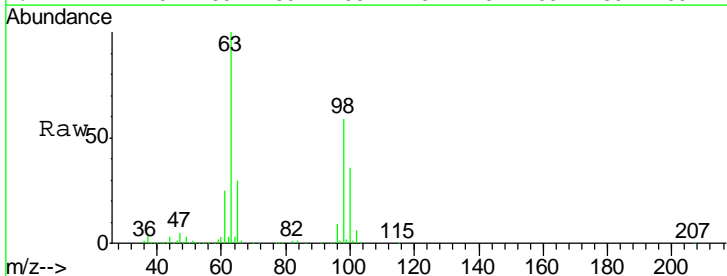
Instrument :
 MSVOA_V
ClientSampled :
 COAW8

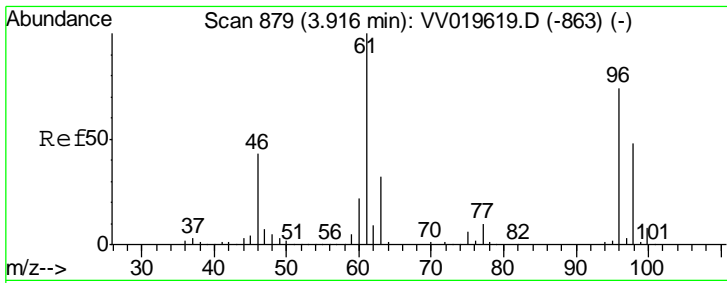
Tgt Ion	Resp	Lower	Upper
101	2773		
101	100		
85	0.0	35.0	52.4#
151	0.0	55.8	83.8#



#12
 1,1-Dichloroethene
 Concen: 4.872 ug/L
 RT: 2.12 min Scan# 320
 Delta R.T. -0.00 min
 Lab File: VV019628.D
 Acq: 15 Dec 2020 01:29

Tgt Ion	Resp	Lower	Upper
96	17397		
96	100		
61	285.4	120.7	224.1#
63	1146.8	64.3	119.5#

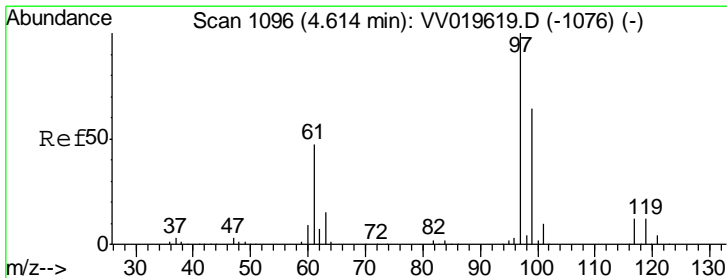
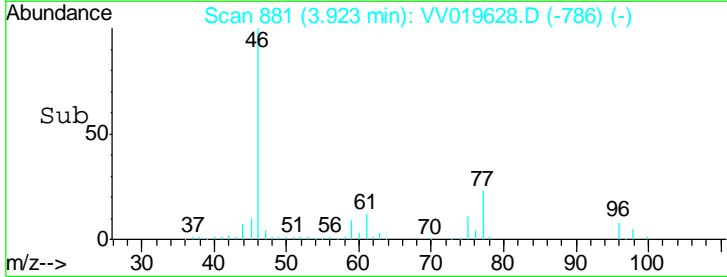
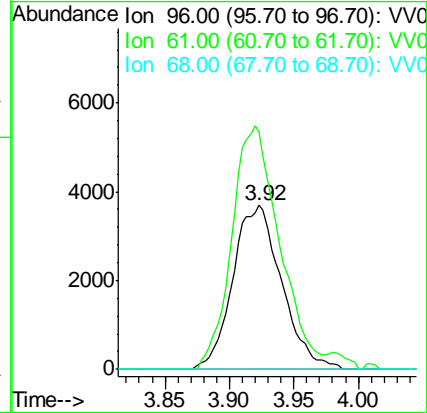
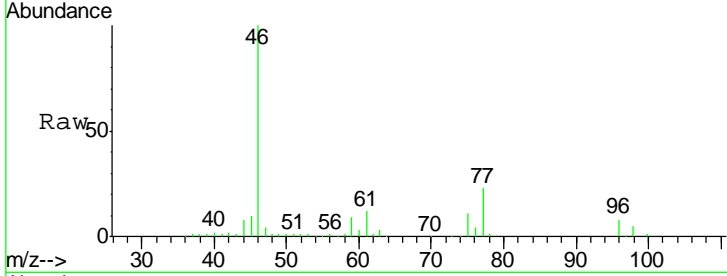




#20
 cis-1,2-Dichloroethene
 Concen: 2.256 ug/L
 RT: 3.92 min Scan# 881
 Delta R.T. 0.01 min
 Lab File: VV019628.D
 Acq: 15 Dec 2020 01:29

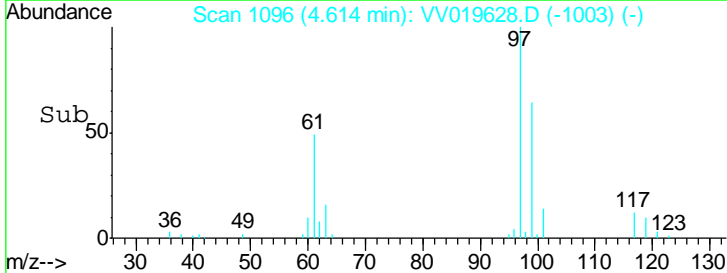
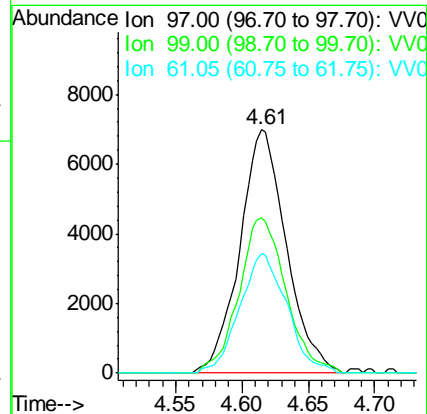
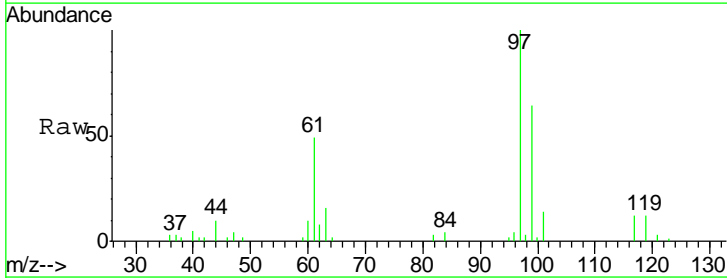
Instrument :
 MSVOA_V
 ClientSampled :
 C0AW8

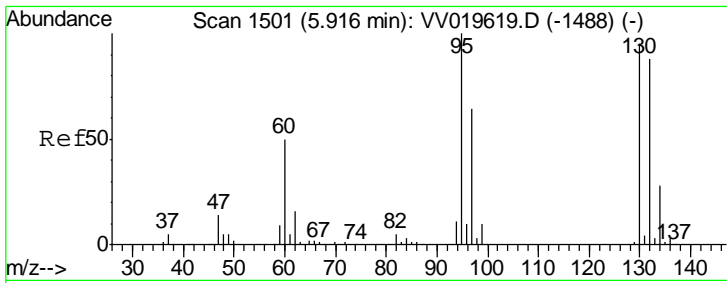
Tgt Ion	Resp	Lower	Upper
96	9706		
61	144.6	94.1	174.8
68	0.0	0.1	0.1#



#30
 1,1,1-Trichloroethane
 Concen: 2.426 ug/L
 RT: 4.61 min Scan# 1096
 Delta R.T. 0.00 min
 Lab File: VV019628.D
 Acq: 15 Dec 2020 01:29

Tgt Ion	Resp	Lower	Upper
97	17061		
99	64.7	51.3	76.9
61	49.7	36.3	54.5

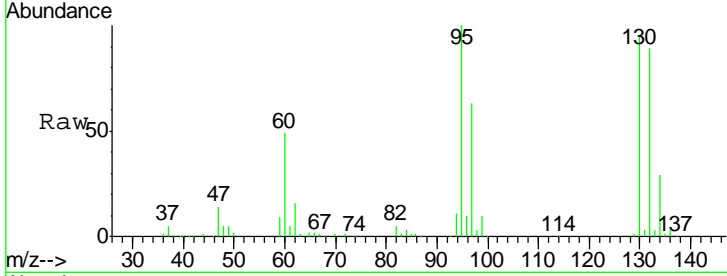




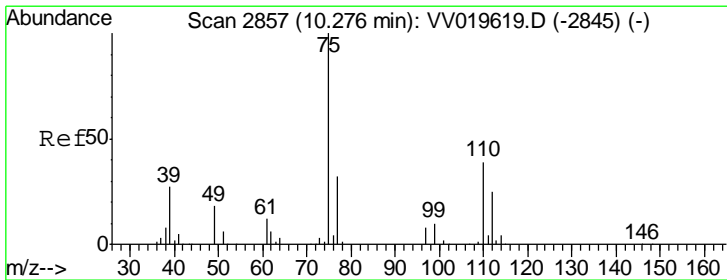
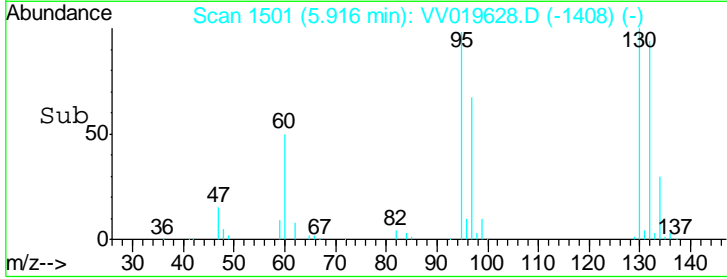
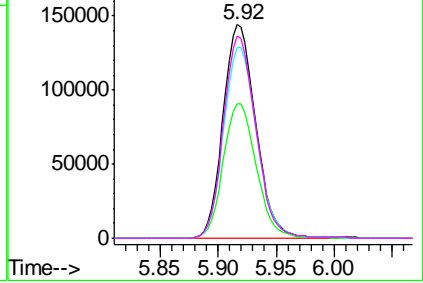
#34
 Trichloroethene
 Concen: 65.108 ug/L
 RT: 5.92 min Scan# 1501
 Delta R.T. 0.00 min
 Lab File: VV019628.D
 Acq: 15 Dec 2020 01:29

Instrument :
 MSVOA_V
ClientSampled :
 COAW8

Tgt Ion	Resp	Lower	Upper
95	100		
97	63.2	44.4	82.4
132	89.3	64.3	119.3
130	94.9	67.8	125.8

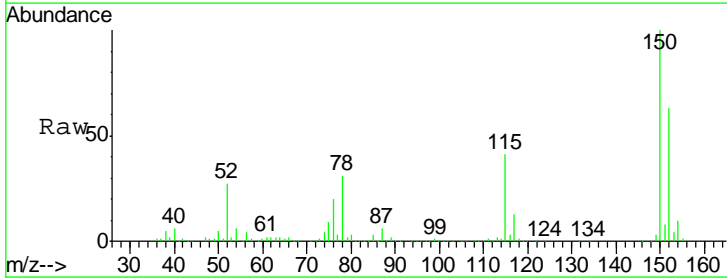


Abundance Ion 95.00 (94.70 to 95.70): VV019619.D (-1488) (-)
 Ion 97.00 (96.70 to 97.70): VV019619.D (-1488) (-)
 Ion 132.00 (131.70 to 132.70): VV019619.D (-1488) (-)
 Ion 130.00 (129.70 to 130.70): VV019619.D (-1488) (-)



#59
 1,2,3-Trichloropropane
 Concen: 6.515 ug/L
 RT: 11.25 min Scan# 3160
 Delta R.T. 0.97 min
 Lab File: VV019628.D
 Acq: 15 Dec 2020 01:29

Tgt Ion	Resp	Lower	Upper
75	100		
77	37.1	25.8	38.8



Abundance Ion 75.00 (74.70 to 75.70): VV019619.D (-2845) (-)
 Ion 77.00 (76.70 to 77.70): VV019619.D (-2845) (-)

