

Data Path : Z:\voasrv\HPCHEM1\MSVOA\_V\Data\VV121423\  
 Data File : VV033325.D  
 Acq On : 14 Dec 2023 11:19  
 Operator : SY/MD  
 Sample : VV1214MBL01  
 Misc : 5.00g/5.0mL/100uL/5.00mL/MSVOA\_V/MEOH  
 ALS Vial : 3 Sample Multiplier: 1

Instrument :  
 MSVOA\_V  
 ClientSampleId :  
 VBLK243

Integration Parameters: LSCINT.P

Integrator: RTE  
 Smoothing : OFF Filtering: 5  
 Sampling : 1 Min Area: 0 % of largest Peak  
 Start Thrs: 0.2 Max Peaks: 100  
 Stop Thrs : 0 Peak Location: TOP

If leading or trailing edge < 100 prefer < Baseline drop else tangent >  
 Peak separation: 5

Method : Z:\voasrv\HPCHEM1\MSVOA\_V\Method\SFAMVLM120123WMA.M  
 Title : VOC Analysis

Signal : TIC: VV033325.D\data.ms

peak #	R.T. min	first scan	max scan	last scan	PK TY	peak height	corr. area	corr. % max.	% of total
1	1.278	68	74	89	rVB	121287	132083	14.36%	1.967%
2	2.050	306	314	332	rVB	189844	276194	30.02%	4.113%
3	2.297	388	391	395	rBV	278	202	0.02%	0.003%
4	2.603	483	486	487	rBV2	376	203	0.02%	0.003%
5	2.777	537	540	541	rBV	119	87	0.01%	0.001%
6	2.873	568	570	571	rBV	245	85	0.01%	0.001%
7	2.912	579	582	584	rBV	170	131	0.01%	0.002%
8	2.947	588	593	595	rBV2	378	343	0.04%	0.005%
9	3.005	607	611	614	rVB2	256	274	0.03%	0.004%
10	3.101	639	641	643	rBV	187	123	0.01%	0.002%
11	3.243	683	685	686	rBV	223	104	0.01%	0.002%
12	3.310	703	706	709	rBB	260	180	0.02%	0.003%
13	3.330	710	712	715	rBV2	290	233	0.03%	0.003%
14	3.387	728	730	733	rBB	126	88	0.01%	0.001%
15	3.420	738	740	743	rBV	302	184	0.02%	0.003%
16	3.468	752	755	757	rBV	247	169	0.02%	0.003%
17	3.516	768	770	773	rBB	232	131	0.01%	0.002%
18	3.545	773	779	781	rBB	305	298	0.03%	0.004%
19	3.564	782	785	788	rBV	242	159	0.02%	0.002%
20	3.613	798	800	802	rBV	258	133	0.01%	0.002%
21	3.696	823	826	827	rBV	151	81	0.01%	0.001%
22	3.786	844	854	888	rBV	39456	117030	12.72%	1.743%
23	4.545	1087	1090	1093	rBV2	408	321	0.03%	0.005%
24	4.632	1114	1117	1119	rBV	173	146	0.02%	0.002%
25	4.641	1119	1120	1123	rBV	238	163	0.02%	0.002%
26	4.706	1139	1140	1142	rBB	221	84	0.01%	0.001%
27	4.725	1143	1146	1147	rBV	145	79	0.01%	0.001%
28	4.805	1168	1171	1174	rBV2	291	226	0.02%	0.003%
29	4.950	1199	1216	1249	rBV3	348797	920099	100.00%	13.703%
30	5.529	1385	1396	1427	rBV	280707	579235	62.95%	8.626%
31	5.899	1507	1511	1513	rBV	264	223	0.02%	0.003%
32	5.908	1513	1514	1517	rBV	296	196	0.02%	0.003%
33	5.982	1525	1537	1564	rBV	185305	384982	41.84%	5.733%
34	6.201	1603	1605	1610	rVB2	419	305	0.03%	0.005%
35	6.223	1610	1612	1613	rBV2	254	97	0.01%	0.001%
36	6.288	1630	1632	1633	rBV2	234	97	0.01%	0.001%

Data Path : Z:\voasrv\HPCHEM1\MSVOA\_V\Data\VV121423\  
 Data File : VV033325.D  
 Acq On : 14 Dec 2023 11:19  
 Operator : SY/MD  
 Sample : VV1214MBL01  
 Misc : 5.00g/5.0mL/100uL/5.00mL/MSVOA\_V/MEOH  
 ALS Vial : 3 Sample Multiplier: 1

Instrument :  
 MSVOA\_V  
 ClientSampleId :  
 VBLK243

Integration Parameters: LSCINT.P

Integrator: RTE  
 Smoothing : OFF  
 Sampling : 1  
 Start Thrs : 0.2  
 Stop Thrs : 0

Filtering: 5  
 Min Area: 0 % of largest Peak  
 Max Peaks: 100  
 Peak Location: TOP

If leading or trailing edge < 100 prefer < Baseline drop else tangent >  
 Peak separation: 5

Method : Z:\voasrv\HPCHEM1\MSVOA\_V\Method\SFAMVLM120123WMA.M  
 Title : VOC Analysis

37	6.391	1662	1664	1667	rBV	238	156	0.02%	0.002%
38	6.519	1701	1704	1708	rBB	300	275	0.03%	0.004%
39	6.555	1714	1715	1718	rBV	212	117	0.01%	0.002%
40	6.690	1754	1757	1761	rBB2	306	208	0.02%	0.003%
41	6.719	1762	1766	1767	rBV	146	125	0.01%	0.002%
42	6.767	1778	1781	1782	rBV	396	214	0.02%	0.003%
43	6.809	1792	1794	1796	rVB	263	98	0.01%	0.001%
44	6.837	1800	1803	1806	rBB2	341	251	0.03%	0.004%
45	6.857	1807	1809	1815	rBV	163	214	0.02%	0.003%
46	6.911	1815	1826	1846	rBV2	111574	208495	22.66%	3.105%
47	7.133	1894	1895	1898	rBV	344	176	0.02%	0.003%
48	7.239	1917	1928	1956	rBV	426304	757051	82.28%	11.275%
49	7.551	2016	2025	2046	rBV	80344	143267	15.57%	2.134%
50	7.969	2154	2155	2159	rBV	262	176	0.02%	0.003%
51	8.027	2164	2173	2207	rBV	146897	308497	33.53%	4.594%
52	8.368	2277	2279	2280	rBV	554	294	0.03%	0.004%
53	8.526	2325	2328	2333	rBV2	329	396	0.04%	0.006%
54	8.689	2378	2379	2380	rBV2	231	79	0.01%	0.001%
55	8.783	2397	2408	2436	rBV	442219	728203	79.14%	10.845%
56	9.030	2483	2485	2490	rVB2	612	342	0.04%	0.005%
57	9.062	2491	2495	2496	rBV2	394	270	0.03%	0.004%
58	9.165	2524	2527	2529	rBV	155	93	0.01%	0.001%
59	9.217	2541	2543	2544	rBV	152	81	0.01%	0.001%
60	9.284	2562	2564	2566	rBB	224	86	0.01%	0.001%
61	9.368	2588	2590	2591	rBV	207	85	0.01%	0.001%
62	9.410	2600	2603	2605	rBV2	218	131	0.01%	0.002%
63	9.455	2614	2617	2621	rBV	303	301	0.03%	0.004%
64	9.612	2664	2666	2668	rBB	176	89	0.01%	0.001%
65	9.628	2668	2671	2674	rBV	413	294	0.03%	0.004%
66	9.657	2678	2680	2683	rBB	145	103	0.01%	0.002%
67	9.677	2683	2686	2687	rBV	297	176	0.02%	0.003%
68	9.844	2735	2738	2740	rBV	154	123	0.01%	0.002%
69	10.017	2790	2792	2794	rBV	129	89	0.01%	0.001%
70	10.046	2797	2801	2803	rBV	237	225	0.02%	0.003%
71	10.156	2823	2835	2855	rBV	289410	463722	50.40%	6.906%
72	10.284	2872	2875	2876	rBV	385	186	0.02%	0.003%
73	10.455	2924	2928	2929	rBV	336	196	0.02%	0.003%
74	10.487	2929	2938	2942	rVV4	962	1352	0.15%	0.020%
75	10.538	2951	2954	2956	rBV	143	101	0.01%	0.002%
76	10.564	2960	2962	2966	rBV	231	188	0.02%	0.003%

Data Path : Z:\voasrv\HPCHEM1\MSVOA\_V\Data\VV121423\  
 Data File : VV033325.D  
 Acq On : 14 Dec 2023 11:19  
 Operator : SY/MD  
 Sample : VV1214MBL01  
 Misc : 5.00g/5.0mL/100uL/5.00mL/MSVOA\_V/MEOH  
 ALS Vial : 3 Sample Multiplier: 1

Instrument :  
 MSVOA\_V  
 ClientSampleId :  
 VBLK243

Integration Parameters: LSCINT.P

Integrator: RTE  
 Smoothing : OFF Filtering: 5  
 Sampling : 1 Min Area: 0 % of largest Peak  
 Start Thrs: 0.2 Max Peaks: 100  
 Stop Thrs : 0 Peak Location: TOP

If leading or trailing edge < 100 prefer < Baseline drop else tangent >  
 Peak separation: 5

Method : Z:\voasrv\HPCHEM1\MSVOA\_V\Method\SFAMVLM120123WMA.M  
 Title : VOC Analysis

77	10.635	2983	2984	2988	rBB	239	117	0.01%	0.002%
78	10.667	2989	2994	2996	rBV2	356	327	0.04%	0.005%
79	10.751	3014	3020	3023	rBV3	381	505	0.05%	0.008%
80	10.857	3046	3053	3054	rBV3	1139	1061	0.12%	0.016%
81	11.024	3101	3105	3106	rBV	150	129	0.01%	0.002%
82	11.040	3109	3110	3114	rVB	262	138	0.01%	0.002%
83	11.127	3130	3137	3144	rBV4	2476	3639	0.40%	0.054%
84	11.185	3145	3155	3180	rVV	501348	789372	85.79%	11.756%
85	11.468	3241	3243	3245	rBV	138	96	0.01%	0.001%
86	11.484	3245	3248	3250	rBV2	320	180	0.02%	0.003%
87	11.561	3260	3272	3295	rBV	528119	824943	89.66%	12.286%
88	11.837	3356	3358	3359	rBV	163	90	0.01%	0.001%
89	11.953	3391	3394	3396	rBV	220	184	0.02%	0.003%
90	12.368	3519	3523	3530	rVB3	944	1043	0.11%	0.016%
91	12.558	3578	3582	3583	rBV	229	129	0.01%	0.002%
92	12.670	3613	3617	3621	rBV2	257	249	0.03%	0.004%
93	12.808	3656	3660	3663	rBV	308	359	0.04%	0.005%
94	13.075	3740	3743	3746	rBV2	345	331	0.04%	0.005%
95	13.127	3757	3759	3762	rBV	168	91	0.01%	0.001%
96	13.143	3762	3764	3767	rVB2	246	96	0.01%	0.001%
97	13.162	3768	3770	3771	rBV2	256	92	0.01%	0.001%
98	13.297	3810	3812	3814	rBV	444	256	0.03%	0.004%
99	13.339	3821	3825	3826	rBV	205	128	0.01%	0.002%
100	13.445	3849	3858	3875	rBV	35397	59799	6.50%	0.891%

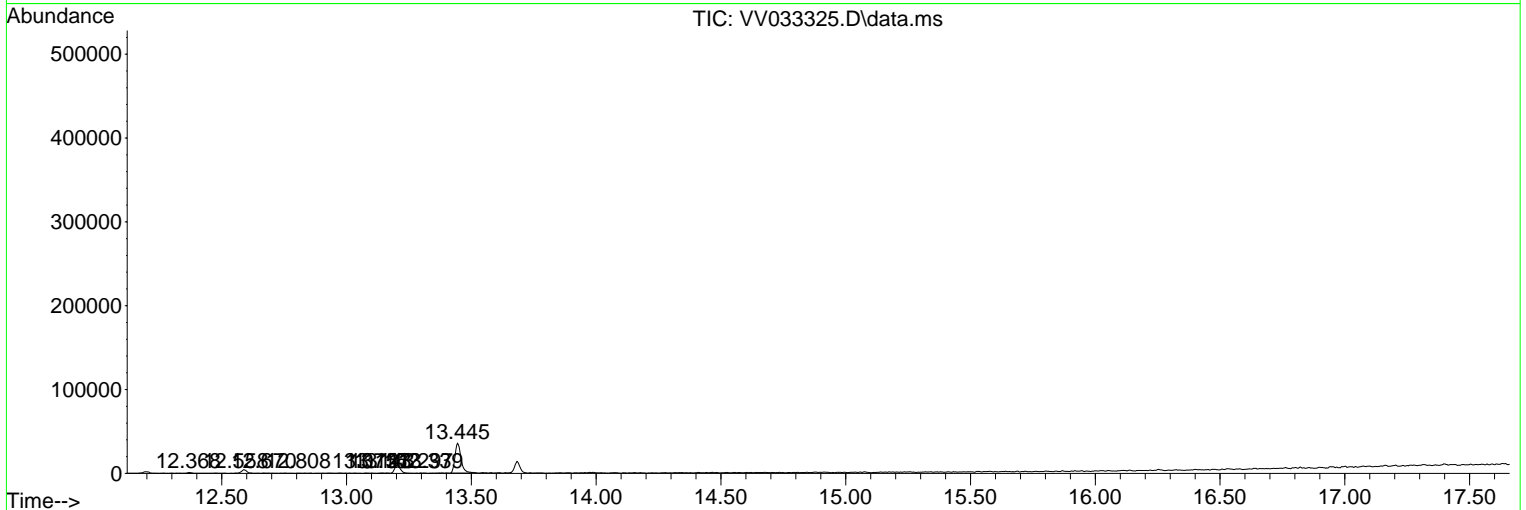
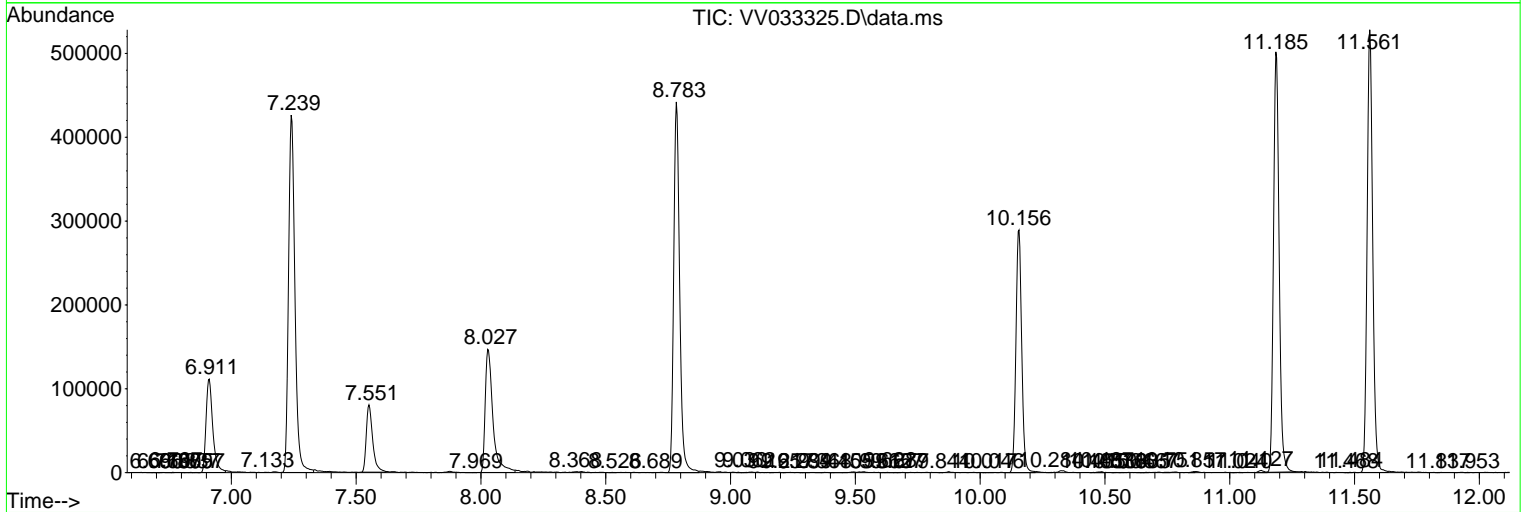
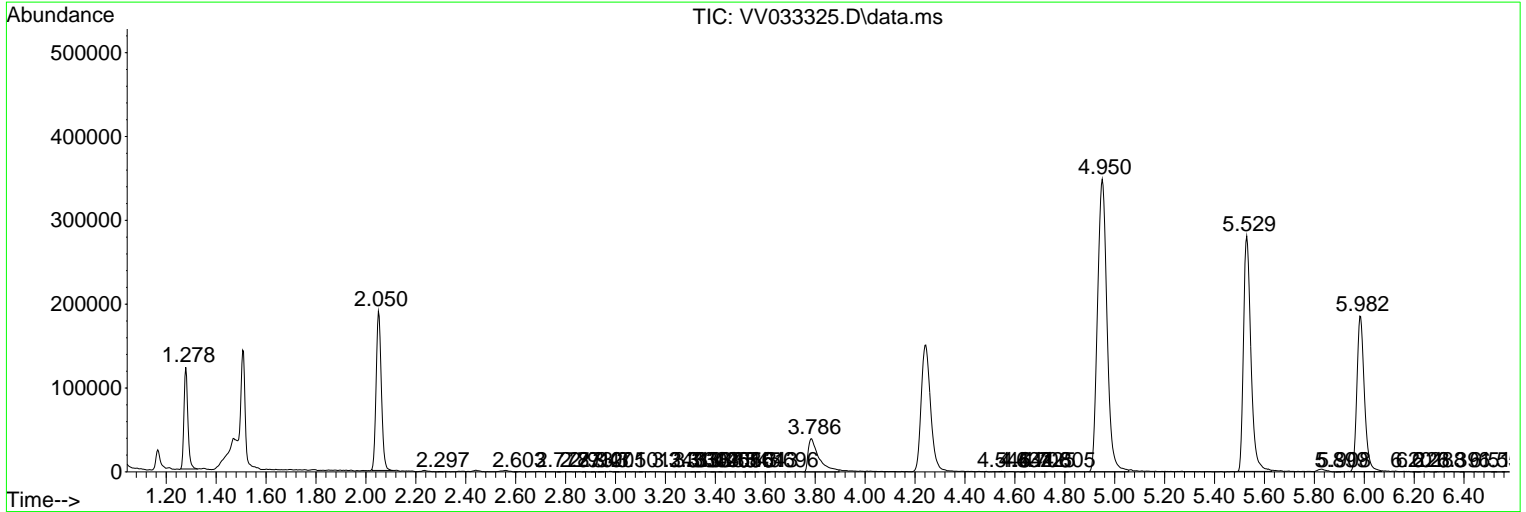
Sum of corrected areas: 6714647

Data Path : Z:\voasrv\HPCHEM1\MSVOA\_V\Data\VV121423\  
 Data File : VV033325.D  
 Acq On : 14 Dec 2023 11:19  
 Operator : SY/MD  
 Sample : VV1214MBL01  
 Misc : 5.00g/5.0mL/100uL/5.00mL/MSVOA\_V/MEOH  
 ALS Vial : 3 Sample Multiplier: 1

Instrument :  
 MSVOA\_V  
 ClientSampleId :  
 VBLK243

Quant Method : Z:\voasrv\HPCHEM1\MSVOA\_V\Method\SFAMVLM120123WMA.M  
 Quant Title : VOC Analysis

TIC Library : C:\Database\NIST20.L  
 TIC Integration Parameters: LSCINT.P



Data Path : Z:\voasrv\HPCHEM1\MSVOA\_V\Data\VV121423\  
 Data File : VV033325.D  
 Acq On : 14 Dec 2023 11:19  
 Operator : SY/MD  
 Sample : VV1214MBL01  
 Misc : 5.00g/5.0mL/100uL/5.00mL/MSVOA\_V/MEOH  
 ALS Vial : 3 Sample Multiplier: 1

Instrument :  
 MSVOA\_V  
 ClientSampleId :  
 VBLK243

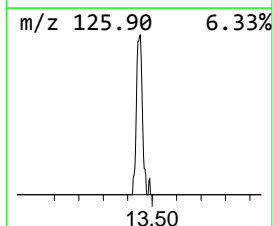
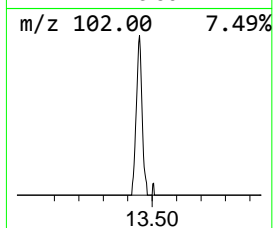
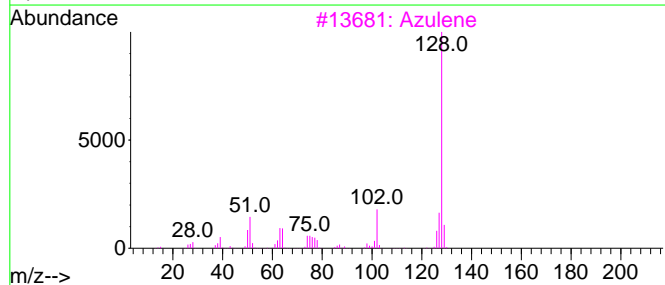
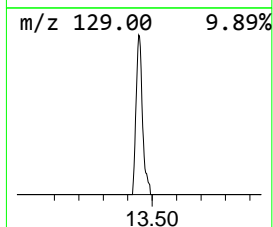
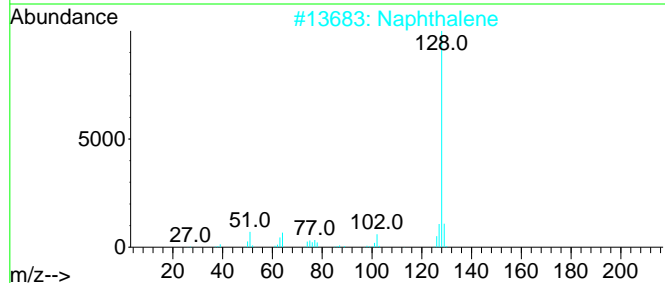
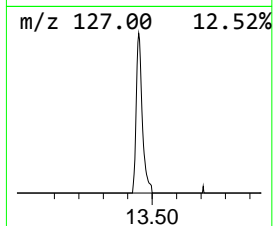
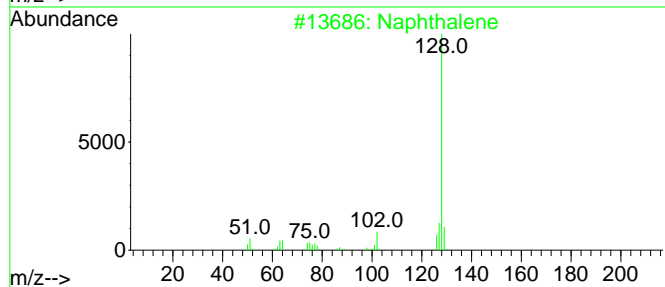
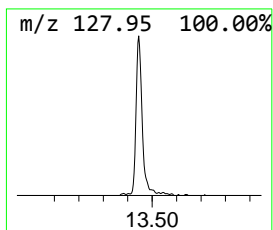
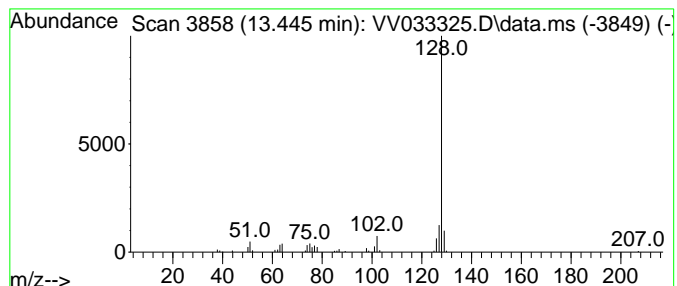
Quant Method : Z:\voasrv\HPCHEM1\MSVOA\_V\Method\SFAMVLM120123WMA.M  
 Quant Title : VOC Analysis

TIC Library : C:\Database\NIST20.L  
 TIC Integration Parameters: LSCINT.P

\*\*\*\*\*  
 Peak Number 2 Azulene Concentration Rank 2

R.T.	EstConc	Area	Relative to ISTD	R.T.
13.445	3.79 ug/L	59799	1,4-Dichlorobenzene-d4	11.188

Hit#	of	5	Tentative ID	MW	MolForm	CAS#	Qual
1			Naphthalene	128	C10H8	000091-20-3	95
2			Naphthalene	128	C10H8	000091-20-3	91
3			Azulene	128	C10H8	000275-51-4	91
4			Azulene	128	C10H8	000275-51-4	91
5			Naphthalene	128	C10H8	000091-20-3	87



Data Path : Z:\voasrv\HPCHEM1\MSVOA\_V\Data\VV121423\  
Data File : VV033325.D  
Acq On : 14 Dec 2023 11:19  
Operator : SY/MD  
Sample : VV1214MBL01  
Misc : 5.00g/5.0mL/100uL/5.00mL/MSVOA\_V/MEOH  
ALS Vial : 3 Sample Multiplier: 1

Instrument :  
MSVOA\_V  
ClientSampleId :  
VBLK243

Quant Method : Z:\voasrv\HPCHEM1\MSVOA\_V\Method\SFAMVLM120123WMA.M  
Quant Title : VOC Analysis

TIC Library : C:\Database\NIST0.L  
TIC Integration Parameters: LSCINT.P

TIC Top Hit name	RT	EstConc	Units	Response	--Internal Standard--			
					#	RT	Resp	Conc
Azulene	13.445	3.8	ug/L	59799	3	11.188	789372	50.0