

Data Path : Z:\VOASRV\HPCHEM1\MSVOA V\DATA\VV121520\
 Data File : VV019655.D
 Acq On : 15 Dec 2020 17:35
 Operator : SY/MD
 Sample : L5024-15
 Misc : 5.0mL/MSVOA V/WATER
 ALS Vial : 1 Sample Multiplier: 1

Instrument :
 MSVOA_V
 ClientSampleId :

Quant Time: Dec 16 00:31:11 2020
 Quant Method : Z:\VOASRV\HPCHEM1\MSVOA_V\METHOD\SOMVLM121020WMA.M
 Quant Title : VOC Analysis
 QLast Update : Wed Dec 16 00:27:25 2020
 Response via : Initial Calibration

Internal Standards	R.T.	QIon	Response	Conc	Units	Dev(Min)
1) 1,4-Difluorobenzene	5.62	114	608575	50.00	ug/L	0.00
28) Chlorobenzene-d5	8.86	117	564293	50.00	ug/L	0.00
60) 1,4-Dichlorobenzene-d4	11.25	152	258549	50.00	ug/L	0.00

System Monitoring Compounds

4) Vinyl Chloride-d3	1.31	65	228811	52.43	ug/L	0.00
Spiked Amount	50.000	Range	60 - 135	Recovery	=	104.86%
7) Chloroethane-d5	1.57	69	182313	52.97	ug/L	0.00
Spiked Amount	50.000	Range	70 - 130	Recovery	=	105.94%
11) 1,1-Dichloroethene-d2	2.11	63	320001	39.51	ug/L	0.00
Spiked Amount	50.000	Range	60 - 125	Recovery	=	79.02%
21) 2-Butanone-d5	3.89	46	302287	127.44	ug/L	0.00
Spiked Amount	100.000	Range	40 - 130	Recovery	=	127.44%
24) Chloroform-d	4.35	84	392378	49.89	ug/L	0.00
Spiked Amount	50.000	Range	70 - 125	Recovery	=	99.78%
26) 1,2-Dichloroethane-d4	5.04	65	270690	52.66	ug/L	0.00
Spiked Amount	50.000	Range	70 - 125	Recovery	=	105.32%
32) Benzene-d6	5.05	84	796638	52.93	ug/L	0.00
Spiked Amount	50.000	Range	70 - 125	Recovery	=	105.86%
36) 1,2-Dichloropropane-d6	6.07	67	248879	52.79	ug/L	0.00
Spiked Amount	50.000	Range	70 - 120	Recovery	=	105.58%
41) Toluene-d8	7.32	98	701701	51.78	ug/L	0.00
Spiked Amount	50.000	Range	80 - 120	Recovery	=	103.56%
43) trans-1,3-Dichloropropene-	7.62	79	121408	45.27	ug/L	0.00
Spiked Amount	50.000	Range	60 - 125	Recovery	=	90.54%
47) 2-Hexanone-d5	8.09	63	210060	113.53	ug/L	0.00
Spiked Amount	100.000	Range	45 - 130	Recovery	=	113.53%
57) 1,1,2,2-Tetrachloroethane-	10.22	84	310875	48.75	ug/L	0.00
Spiked Amount	50.000	Range	65 - 120	Recovery	=	97.50%
64) 1,2-Dichlorobenzene-d4	11.63	152	250786	51.89	ug/L	0.00
Spiked Amount	50.000	Range	80 - 120	Recovery	=	103.78%

Target Compounds

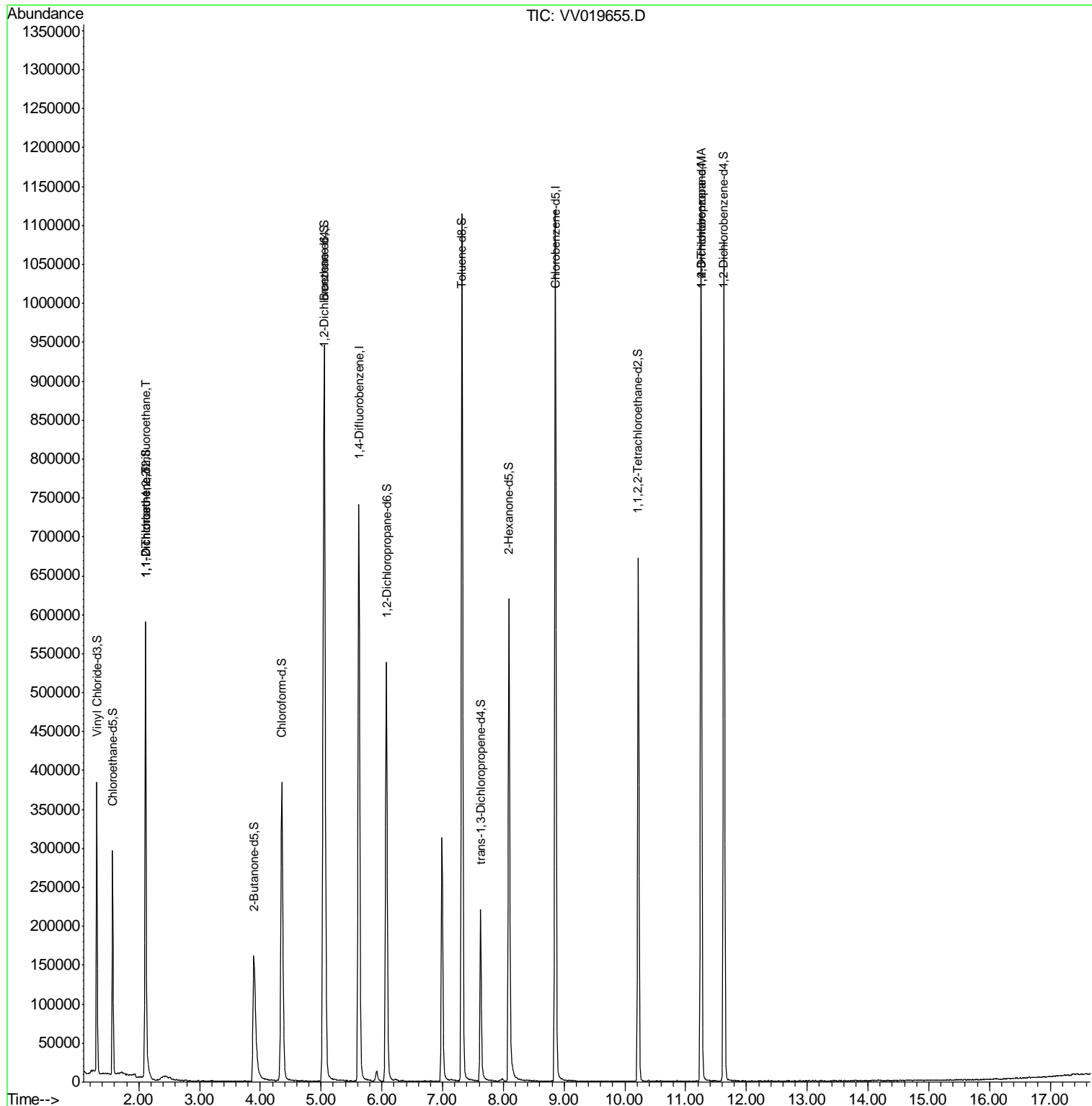
Target Compounds	R.T.	QIon	Response	Conc	Units	Ovalue
10) 1,1,2-Trichloro-1,2,2-trif	2.11	101	2817	0.797	ug/L #	22
12) 1,1-Dichloroethene	2.12	96	4151	1.145	ug/L #	1
59) 1,2,3-Trichloropropane	11.25	75	35259	6.582	ug/L	92

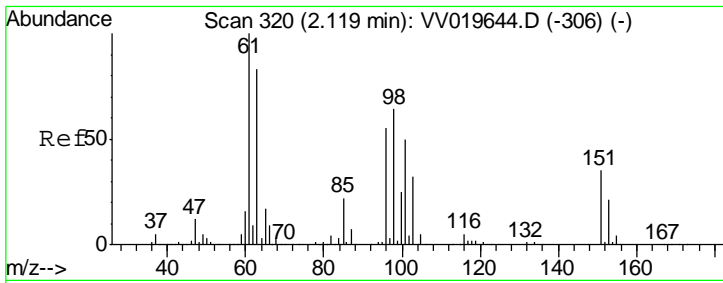
(#) = qualifier out of range (m) = manual integration (+) = signals summed

Data Path : Z:\VOASRV\HPCHEM1\MSVOA V\DATA\VV121520\
 Data File : VV019655.D
 Acq On : 15 Dec 2020 17:35
 Operator : SY/MD
 Sample : L5024-15
 Misc : 5.0mL/MSVOA V/WATER
 ALS Vial : 1 Sample Multiplier: 1

Instrument :
 MSVOA_V
 ClientSampled :

Quant Time: Dec 16 00:31:11 2020
 Quant Method : Z:\VOASRV\HPCHEM1\MSVOA_V\METHOD\SOMVLM121020WMA.M
 Quant Title : VOC Analysis
 QLast Update : Wed Dec 16 00:27:25 2020
 Response via : Initial Calibration

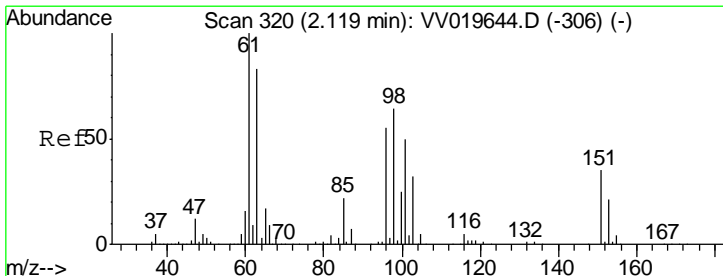
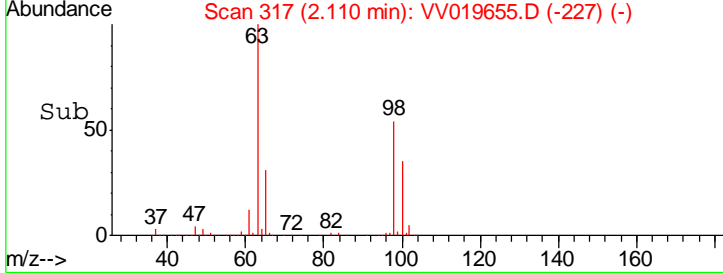
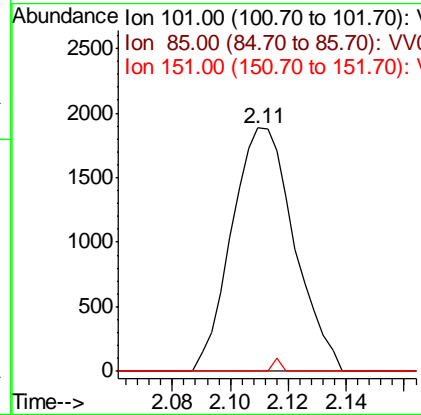
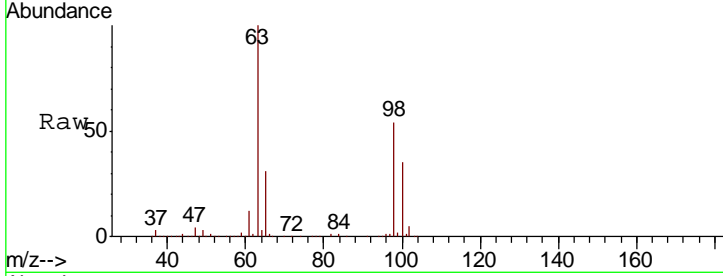




#10
 1,1,2-Trichloro-1,2,2-trifluoroethane
 Concen: 0.797 ug/L
 RT: 2.11 min Scan# 317
 Delta R.T. -0.01 min
 Lab File: VV019655.D
 Acq: 15 Dec 2020 17:35

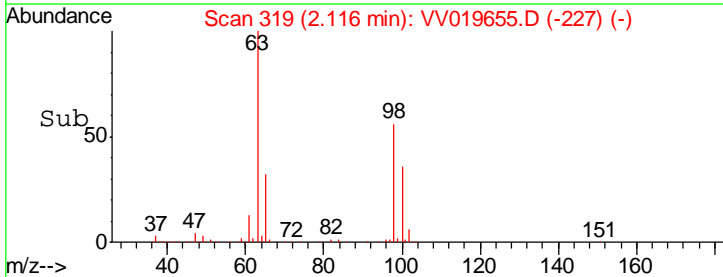
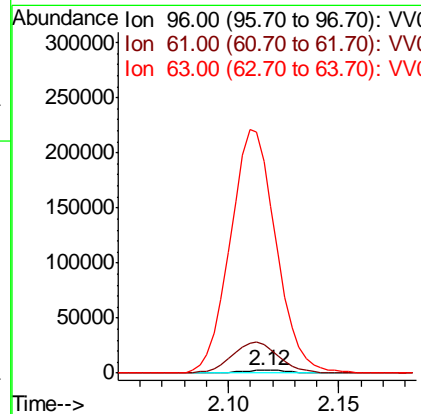
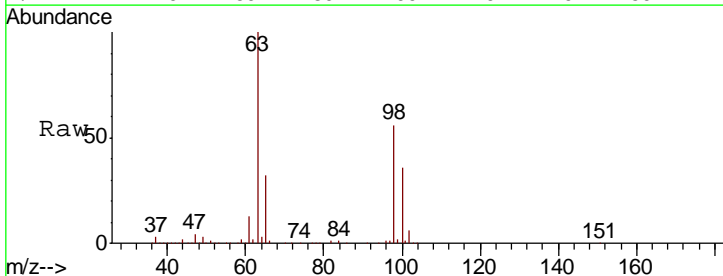
Instrument :
 MSVOA_V
 ClientSampled :

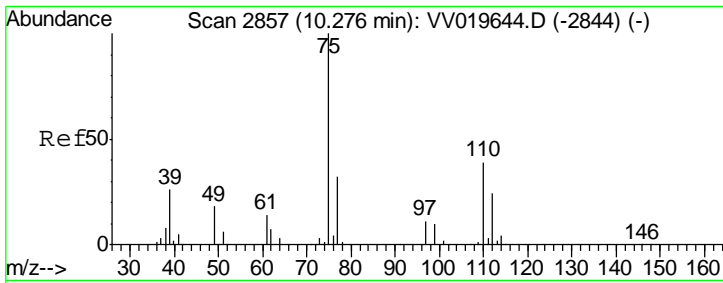
Tgt Ion	Resp	Lower	Upper
101	2817		
101	100		
85	0.0	35.0	52.4#
151	0.0	55.8	83.8#



#12
 1,1-Dichloroethene
 Concen: 1.145 ug/L
 RT: 2.12 min Scan# 319
 Delta R.T. -0.00 min
 Lab File: VV019655.D
 Acq: 15 Dec 2020 17:35

Tgt Ion	Resp	Lower	Upper
96	4151		
96	100		
61	1084.4	120.7	224.1#
63	8195.9	64.3	119.5#





#59
 1,2,3-Trichloropropane
 Concen: 6.582 ug/L
 RT: 11.25 min Scan# 3160
 Delta R.T. 0.97 min
 Lab File: VV019655.D
 Acq: 15 Dec 2020 17:35

Instrument : MSVOA_V
 ClientSampled :

Tot Ion	Resp	Lower	Upper
75	35259		
75	100		
77	36.9	25.8	38.8

