

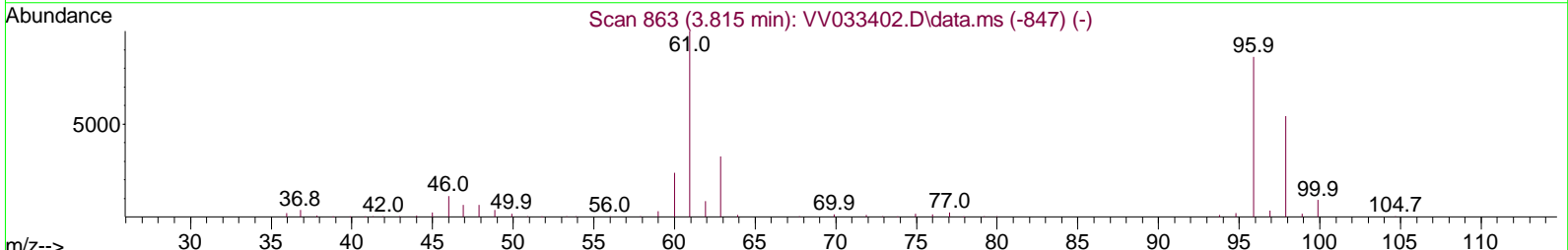
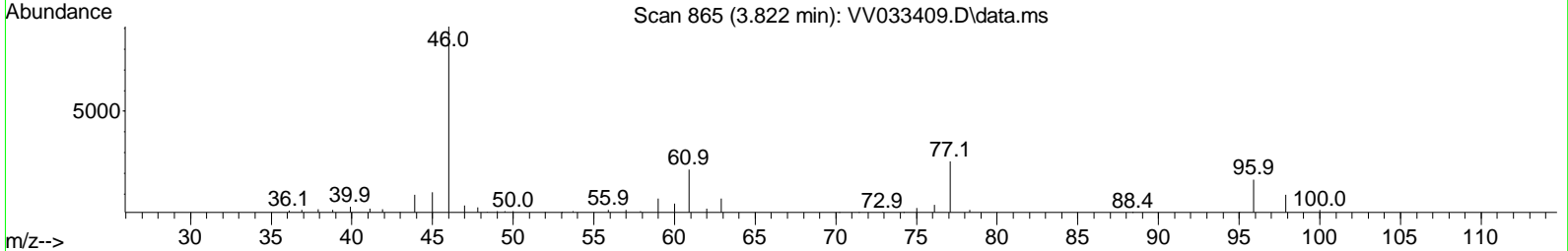
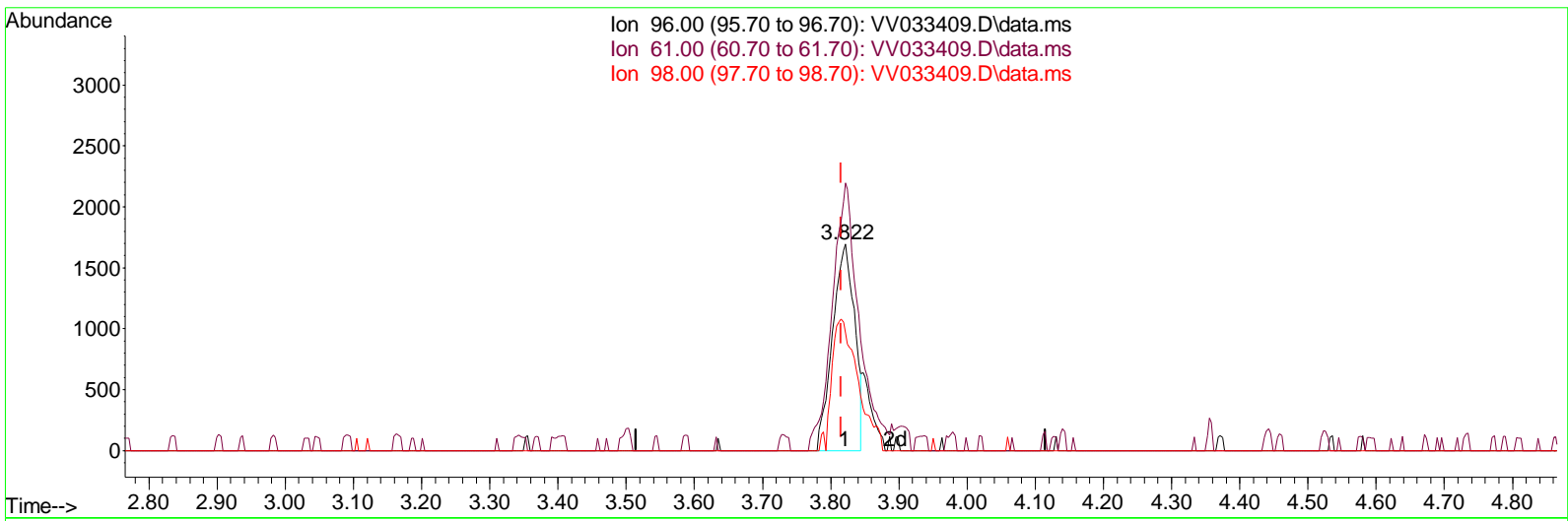
Data Path : Z:\voasrv\HPCHEM1\MSVOA\_V\Data\VV121523\  
 Data File : VV033409.D  
 Acq On : 16 Dec 2023 04:05  
 Operator : SY/MD  
 Sample : 05802-14DL 200X  
 Mi sc : 5.0mL/MSVOA\_V/WATER  
 ALS Vial : 40 Sample Multiplier: 1

**Instrument :**  
 MSVOA\_V  
**ClientSampleId :**  
 F7B25DL

**Manual IntegrationsAPPROVED**

Reviewed By :Semsettin Yesilyurt 12/16/2023  
 Supervised By :Mahesh Dadoda 12/18/2023

Quant Time: Dec 16 04:27:40 2023  
 Quant Method : Z:\voasrv\HPCHEM1\MSVOA\_V\Method\SFAMVLM121523WMA.M  
 Quant Title : VOC Analysis  
 QLast Update : Sat Dec 16 01:35:53 2023  
 Response via : Initial Calibration



TIC: VV033409.D\data.ms

(20) cis-1,2-Dichloroethene (T)

3.822min (+ 0.007) 2.29 ug/L

response	3836	
Ion	Exp%	Act%
96.00	100.00	100.00
61.00	117.00	129.36
98.00	63.30	56.96
0.00	0.00	0.00

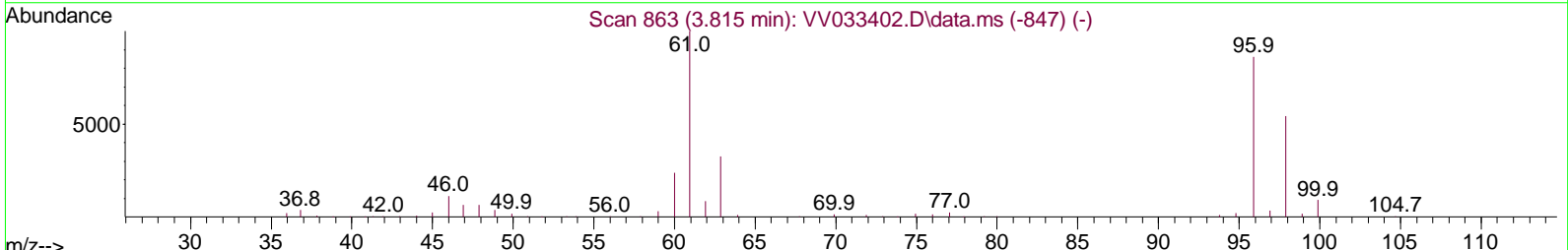
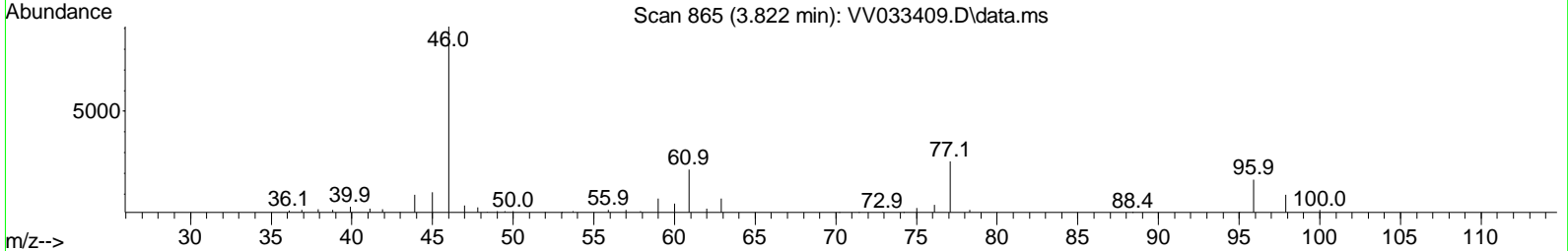
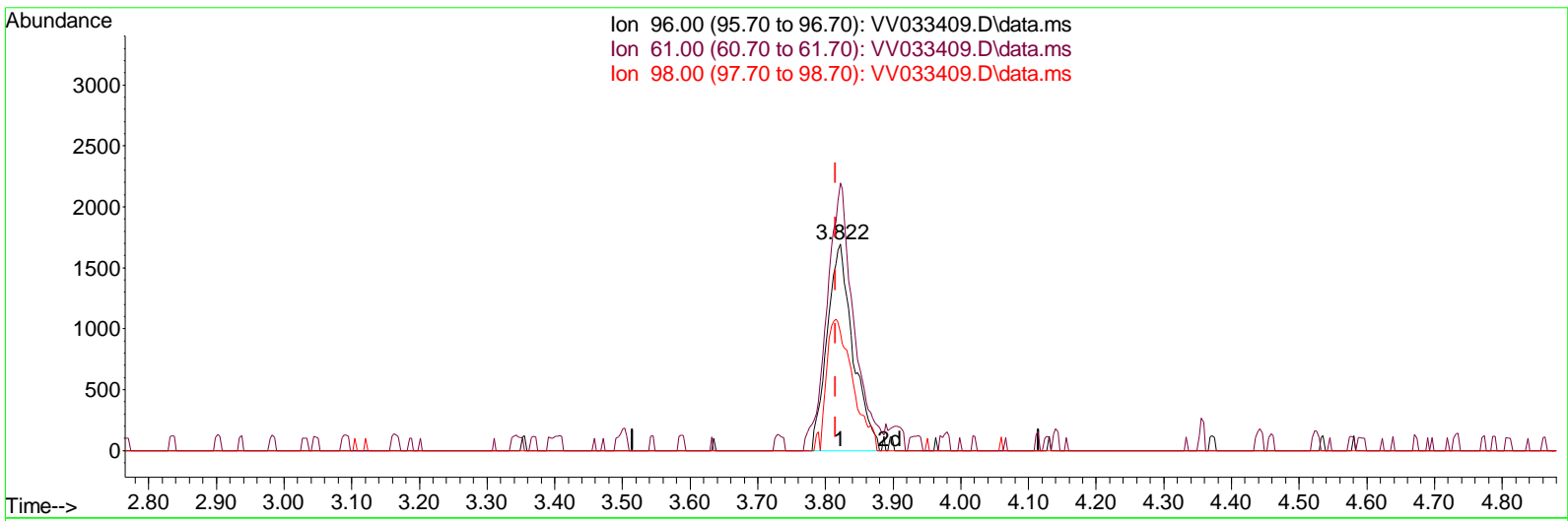
Data Path : Z:\voasrv\HPCHEM1\MSVOA\_V\Data\VV121523\  
 Data File : VV033409.D  
 Acq On : 16 Dec 2023 04:05  
 Operator : SY/MD  
 Sample : 05802-14DL 200X  
 Mi sc : 5.0mL/MSVOA\_V/WATER  
 ALS Vial : 40 Sample Multiplier: 1

**Instrument :**  
 MSVOA\_V  
**ClientSampleId :**  
 F7B25DL

**Manual Integrations APPROVED**

Reviewed By : Semsettin Yesilyurt 12/16/2023  
 Supervised By : Mahesh Dadoda 12/18/2023

Quant Time: Dec 16 04:27:40 2023  
 Quant Method : Z:\voasrv\HPCHEM1\MSVOA\_V\Method\SFAMVLM121523WMA.M  
 Quant Title : VOC Analysis  
 QLast Update : Sat Dec 16 01:35:53 2023  
 Response via : Initial Calibration



TIC: VV033409.D\data.ms

(20) cis-1,2-Dichloroethene (T)

3.822min (+ 0.007) 2.67 ug/L m

response	4480	
Ion	Exp%	Act%
96.00	100.00	100.00
61.00	117.00	129.36
98.00	63.30	56.96
0.00	0.00	0.00

Data Path : Z:\voasrv\HPCHEM1\MSVOA\_V\Data\VV121523\  
 Data File : VV033409.D  
 Acq On : 16 Dec 2023 04:05  
 Operator : SY/MD  
 Sample : 05802-14DL 200X  
 Misc : 5.0mL/MSVOA\_V/WATER  
 ALS Vial : 40 Sample Multiplier: 1

**Instrument :**  
 MSVOA\_V  
**ClientSampleId :**  
 F7B25DL

**Manual IntegrationsAPPROVED**

Reviewed By :Semsettin Yesilyurt 12/16/2023  
 Supervised By :Mahesh Dadoda 12/18/2023

Quant Time: Dec 16 04:27:40 2023  
 Quant Method : Z:\voasrv\HPCHEM1\MSVOA\_V\Method\SFAMVLM121523WMA.M  
 Quant Title : VOC Analysis  
 QLast Update : Sat Dec 16 01:35:53 2023  
 Response via : Initial Calibration

Compound	R.T.	QI on	Response	Conc	Units	Dev(Min)
<b>Internal Standards</b>						
1) 1,4-Difluorobenzene	5.535	114	222257	50.000	ug/L	0.00
28) Chlorobenzene-d5	8.786	117	232170	50.000	ug/L	0.00
58) 1,4-Dichlorobenzene-d4	11.185	152	99338	50.000	ug/L	0.00
<b>System Monitoring Compounds</b>						
4) Vinyl Chloride-d3	1.278	65	77211	45.111	ug/L	0.00
Spike Amount 50.000	Range 60	- 135	Recovery =	90.220%		
7) Chloroethane-d5	1.532	69	71355	46.455	ug/L	0.00
Spike Amount 50.000	Range 70	- 130	Recovery =	92.920%		
11) 1,1-Dichloroethene-d2	2.060	65	38211	44.848	ug/L	0.00
Spike Amount 50.000	Range 60	- 125	Recovery =	89.700%		
21) 2-Butanone-d5	3.786	46	82248	95.347	ug/L	0.00
Spike Amount 100.000	Range 40	- 130	Recovery =	95.350%		
24) Chloroform-d	4.249	84	156879	46.336	ug/L	0.00
Spike Amount 50.000	Range 70	- 125	Recovery =	92.680%		
26) 1,2-Dichloroethane-d4	4.944	65	101895	48.992	ug/L	0.00
Spike Amount 50.000	Range 70	- 125	Recovery =	97.980%		
32) Benzene-d6	4.960	84	296892	47.479	ug/L	0.00
Spike Amount 50.000	Range 70	- 125	Recovery =	94.960%		
36) 1,2-Dichloropropane-d6	5.989	67	91514	48.221	ug/L	0.00
Spike Amount 50.000	Range 70	- 120	Recovery =	96.440%		
41) Toluene-d8	7.243	98	253664	44.334	ug/L	0.00
Spike Amount 50.000	Range 80	- 120	Recovery =	88.660%		
43) trans-1,3-Dichloroprop...	7.555	79	40571	43.620	ug/L	0.00
Spike Amount 50.000	Range 60	- 125	Recovery =	87.240%		
47) 2-Hexanone-d5	8.024	63	57921	90.739	ug/L	0.00
Spike Amount 100.000	Range 45	- 130	Recovery =	90.740%		
56) 1,1,2,2-Tetrachloroeth...	10.153	84	124812	45.758	ug/L	0.00
Spike Amount 50.000	Range 65	- 120	Recovery =	91.520%		
66) 1,2-Dichlorobenzene-d4	11.561	152	103737	55.572	ug/L	0.00
Spike Amount 50.000	Range 80	- 120	Recovery =	111.140%		
<b>Target Compounds</b>						
20) cis-1,2-Dichloroethene	3.822	96	4480m	2.669	ug/L	
34) Trichloroethene	5.838	95	16129	9.500	ug/L	97
46) Tetrachloroethene	7.905	164	35246	26.570	ug/L	98

(#) = qualifier out of range (m) = manual integration (+) = signals summed

Data Path : Z:\voasrv\HPCHEM1\MSVOA\_V\Data\V121523\  
 Data File : VV033409.D  
 Acq On : 16 Dec 2023 04:05  
 Operator : SY/MD  
 Sample : 05802-14DL 200X  
 Mi sc : 5.0mL/MSVOA\_V/WATER  
 ALS Vial : 40 Sample Multiplier: 1

**Instrument :**  
 MSVOA\_V  
**Client Sample Id :**  
 F7B25DL

**Manual Integrations APPROVED**

Reviewed By : Semsettin Yesilyurt 12/16/2023  
 Supervised By : Mahesh Dadoda 12/18/2023

Quant Time: Dec 16 04:27:40 2023  
 Quant Method : Z:\voasrv\HPCHEM1\MSVOA\_V\Method\SFAMVLM121523WMA.M  
 Quant Title : VOC Analysis  
 QLast Update : Sat Dec 16 01:35:53 2023  
 Response via : Initial Calibration

