

Data File : VV014072.D
 Acq On : 16 Dec 2019 15:11
 Operator : SY/MD
 Sample : K6275-05
 Misc : 25.0mL/MSVOA_V/WATER
 ALS Vial : 11 Sample Multiplier: 1

Instrument :
 MSVOA_V
 ClientSampleId :
 BFDS1

Quant Time: Dec 17 05:47:00 2019
 Quant Method : Z:\VOASRV\HPCHEM1\MSVOA_V\METHOD\SOMVTR112219WMA.M
 Quant Title : TRACE VOA SOM01.0
 QLast Update : Tue Dec 17 05:42:45 2019
 Response via : Initial Calibration

Internal Standards	R.T.	QIon	Response	Conc	Units	Dev(Min)
1) 1,4-Difluorobenzene	5.66	114	377838	5.00	ug/L	0.00
28) Chlorobenzene-d5	8.89	117	373297	5.00	ug/L	0.00
60) 1,4-Dichlorobenzene-d4	11.29	152	170953	5.00	ug/L	0.00

System Monitoring Compounds

4) Vinyl Chloride-d3	1.32	65	98780	4.22	ug/L	0.00
Spiked Amount	5.000	Range	40 - 130	Recovery	=	84.40%
7) Chloroethane-d5	1.58	69	94112	4.74	ug/L	0.00
Spiked Amount	5.000	Range	65 - 130	Recovery	=	94.80%
11) 1,1-Dichloroethene-d2	2.13	63	126330	3.21	ug/L	0.00
Spiked Amount	5.000	Range	60 - 125	Recovery	=	64.20%
20) 2-Butanone-d5	3.96	46	311921	64.16	ug/L	0.01
Spiked Amount	50.000	Range	40 - 130	Recovery	=	128.32%
24) Chloroform-d	4.40	84	179694	3.81	ug/L	0.00
Spiked Amount	5.000	Range	70 - 125	Recovery	=	76.20%
26) 1,2-Dichloroethane-d4	5.08	65	104952	4.68	ug/L	0.00
Spiked Amount	5.000	Range	70 - 130	Recovery	=	93.60%
32) Benzene-d6	5.09	84	367060	3.81	ug/L	0.00
Spiked Amount	5.000	Range	70 - 125	Recovery	=	76.20%
36) 1,2-Dichloropropane-d6	6.11	67	127640	4.45	ug/L	0.00
Spiked Amount	5.000	Range	60 - 140	Recovery	=	89.00%
41) Toluene-d8	7.36	98	279083	3.09	ug/L	0.00
Spiked Amount	5.000	Range	70 - 130	Recovery	=	61.80%#
43) trans-1,3-Dichloropropene-	7.66	79	42612	3.81	ug/L	0.00
Spiked Amount	5.000	Range	55 - 130	Recovery	=	76.20%
46) 2-Hexanone-d5	8.14	63	200353	48.62	ug/L	0.00
Spiked Amount	50.000	Range	45 - 130	Recovery	=	97.24%
57) 1,1,2,2-Tetrachloroethane-	10.26	84	97199	4.88	ug/L	0.00
Spiked Amount	5.000	Range	65 - 120	Recovery	=	97.60%
64) 1,2-Dichlorobenzene-d4	11.67	152	132182	4.38	ug/L	0.00
Spiked Amount	5.000	Range	80 - 120	Recovery	=	87.60%

Target Compounds

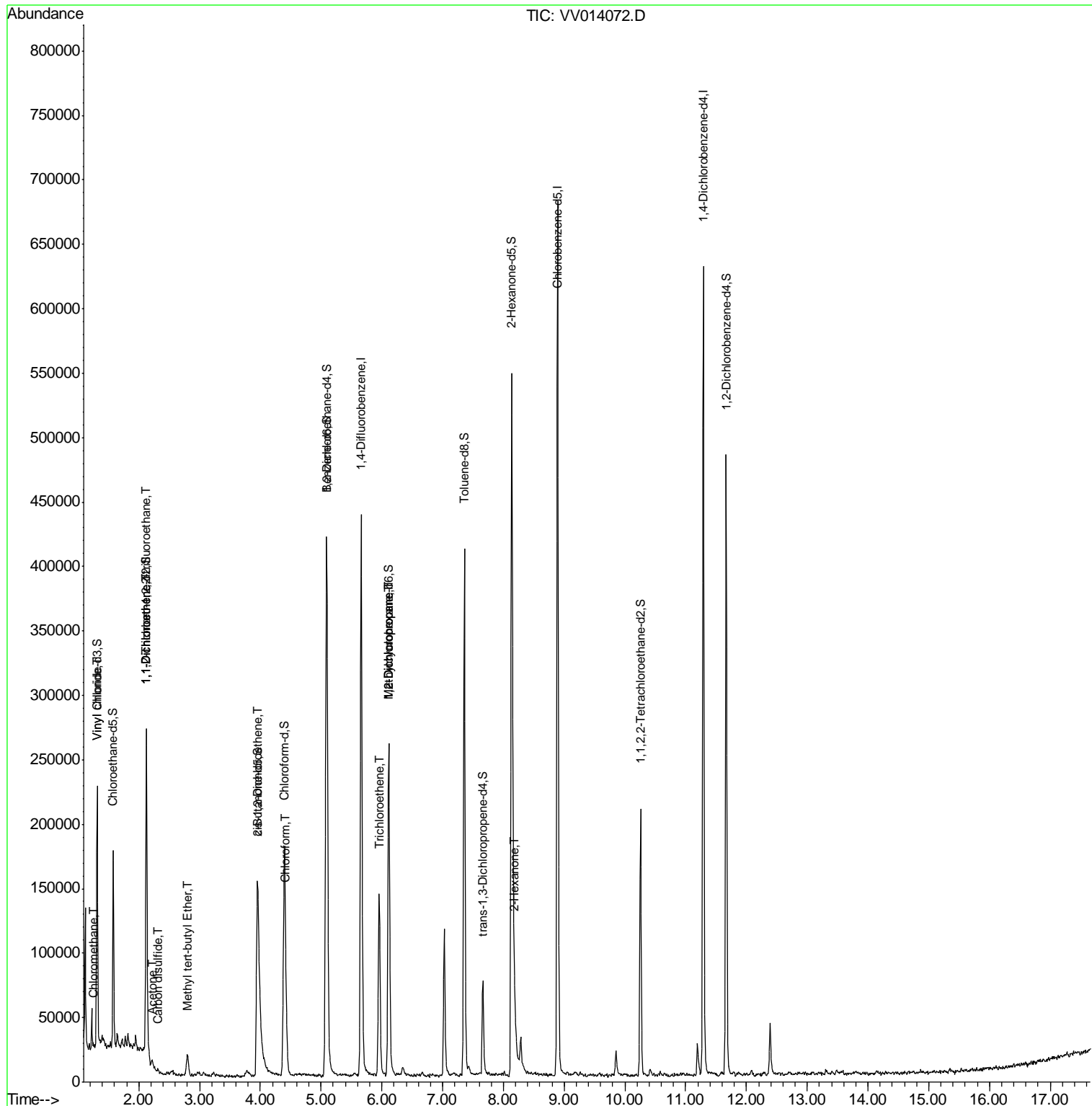
Target Compounds	R.T.	QIon	Response	Conc	Units	Qvalue
3) Chloromethane	1.25	50	1774	0.080	ug/L	85
5) Vinyl chloride	1.32	62	2354	0.104	ug/L #	1
10) 1,1,2-Trichloro-1,2,2-trif	2.12	101	1479	0.071	ug/L #	36
12) 1,1-Dichloroethene	2.14	96	5435	0.299	ug/L #	1
13) Acetone	2.23	43	11931	3.509	ug/L	68
14) Carbon disulfide	2.32	76	3512	0.084	ug/L #	92
17) Methyl tert-butyl Ether	2.81	73	11348	0.228	ug/L #	80
22) cis-1,2-Dichloroethene	3.96	96	10828	0.450	ug/L	90
25) Chloroform	4.42	83	28528	0.657	ug/L	95
34) Trichloroethene	5.96	95	47633	1.886	ug/L	97
35) Methylcyclohexane	6.11	83	30597	0.908	ug/L #	19
37) 1,2-Dichloropropane	6.12	63	13897	0.590	ug/L #	87
48) 2-Hexanone	8.19	43	23241	2.371	ug/L	91

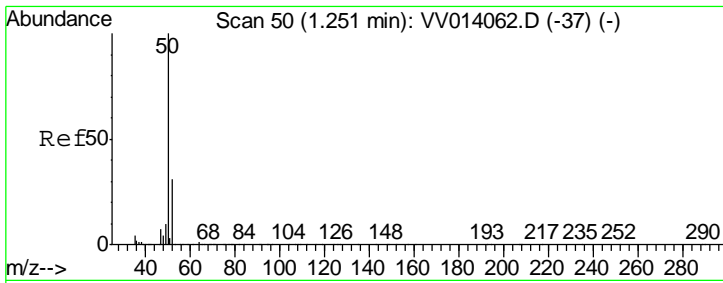
(#) = qualifier out of range (m) = manual integration (+) = signals summed

Data File : VV014072.D
Acq On : 16 Dec 2019 15:11
Operator : SY/MD
Sample : K6275-05
Misc : 25.0mL/MSVOA_V/WATER
ALS Vial : 11 Sample Multiplier: 1

Instrument :
MSVOA_V
Client Sampled :
BFDS1

Quant Time: Dec 17 05:47:00 2019
Quant Method : Z:\VOASRV\HPCHEM1\MSVOA_V\METHOD\SOMVTR112219WMA.M
Quant Title : TRACE VOA SOM01.0
QLast Update : Tue Dec 17 05:42:45 2019
Response via : Initial Calibration

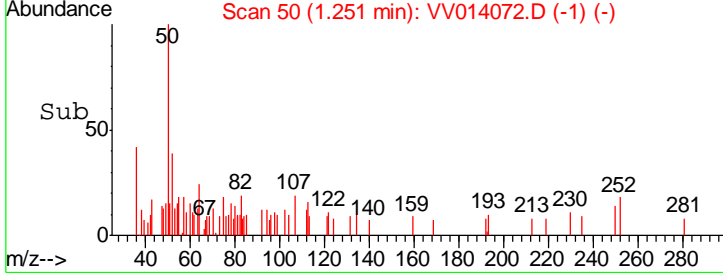
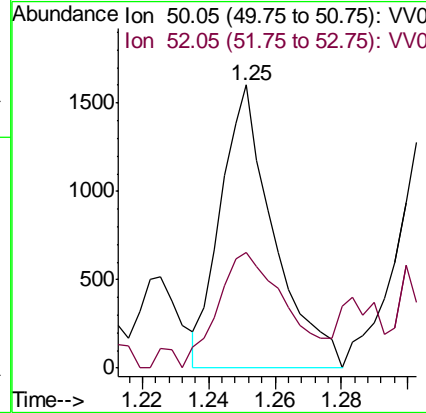
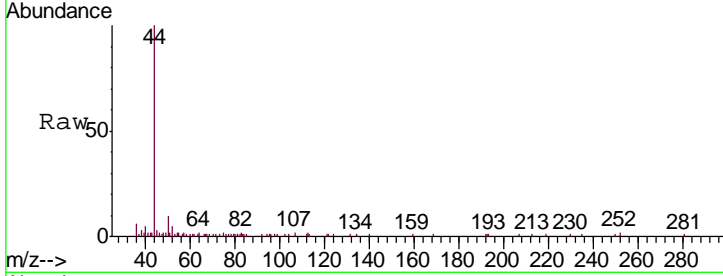




#3
 Chloromethane
 Concen: 0.080 ug/L
 RT: 1.25 min Scan# 50
 Delta R.T. 0.00 min
 Lab File: VV014072.D
 Acq: 16 Dec 2019 15:11

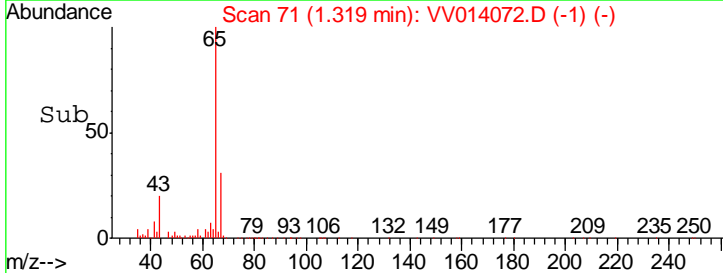
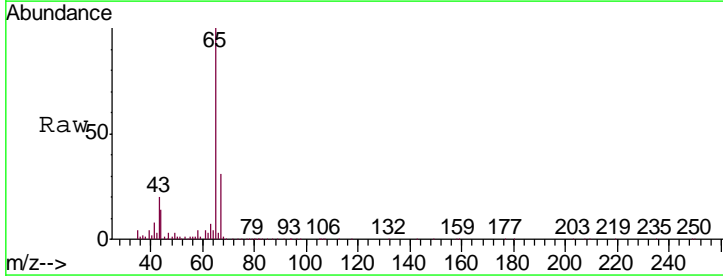
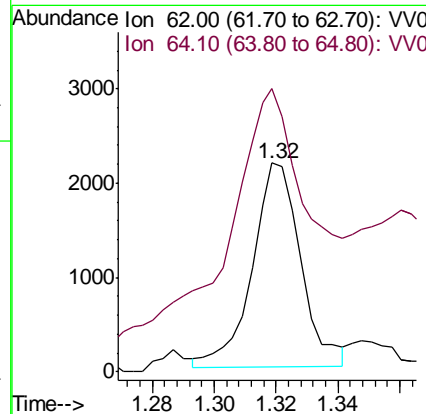
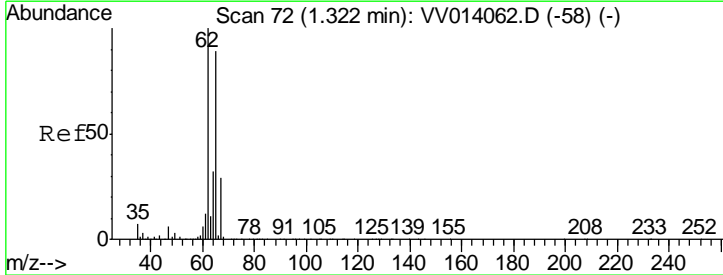
Instrument : MSVOA_V
 ClientSampled : BFDS1

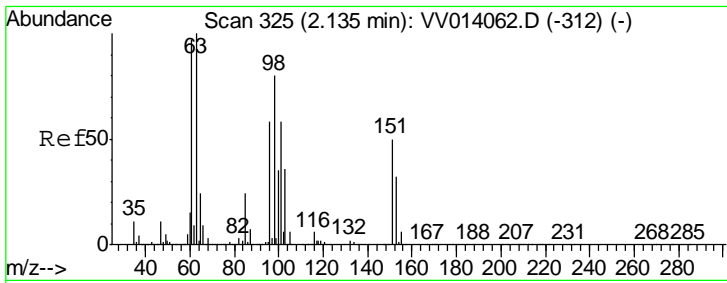
Tgt Ion: 50 Resp: 1774
 Ion Ratio Lower Upper
 50 100
 52 40.7 22.5 41.7



#5
 Vinyl chloride
 Concen: 0.104 ug/L
 RT: 1.32 min Scan# 71
 Delta R.T. -0.00 min
 Lab File: VV014072.D
 Acq: 16 Dec 2019 15:11

Tgt Ion: 62 Resp: 2354
 Ion Ratio Lower Upper
 62 100
 64 135.7 23.3 43.3#





#10

1,1,2-Trichloro-1,2,2-trifluoroethane

Concen: 0.071 ug/L

RT: 2.12 min Scan# 321

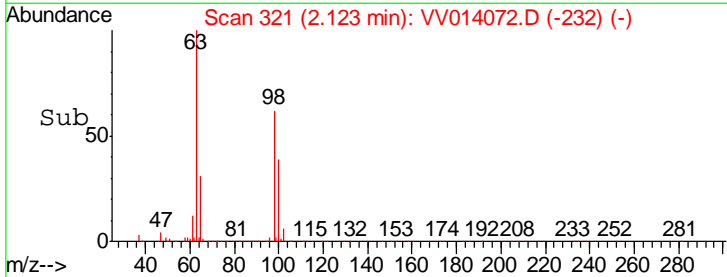
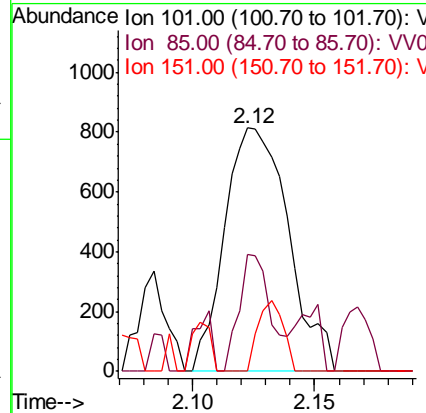
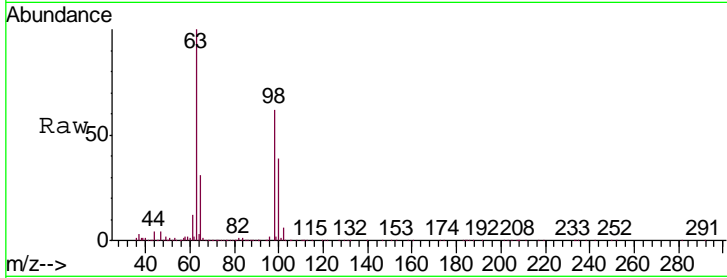
Delta R.T. -0.01 min

Lab File: VV014072.D

Acq: 16 Dec 2019 15:11

Instrument :
MSVOA_V
ClientSampled :
BFDS1

Tgt Ion	Resp	Lower	Upper
101	1479		
101	100		
85	24.1	33.4	50.0#
151	11.4	69.4	104.0#



#12

1,1-Dichloroethene

Concen: 0.299 ug/L

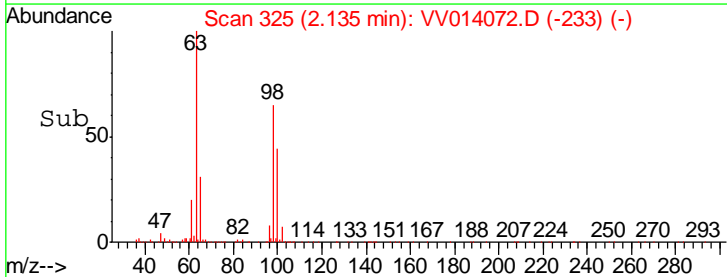
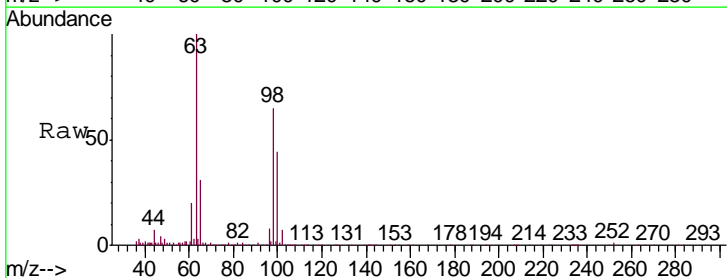
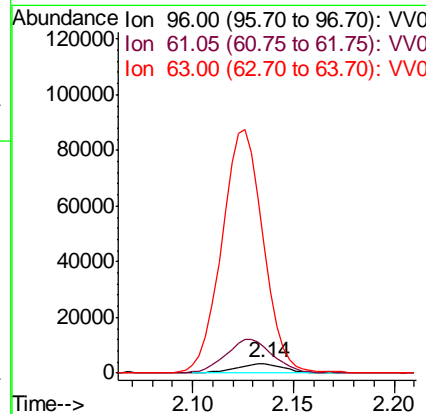
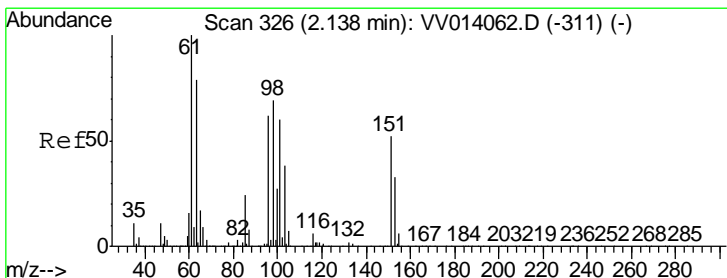
RT: 2.14 min Scan# 325

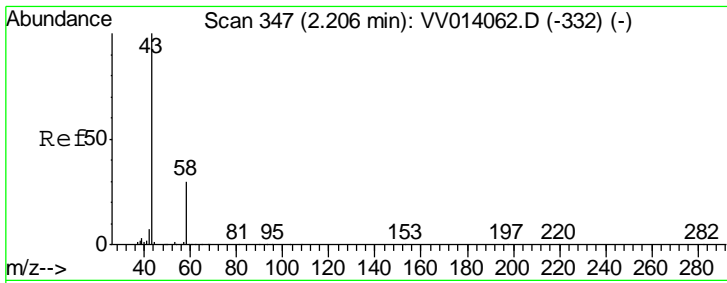
Delta R.T. -0.00 min

Lab File: VV014072.D

Acq: 16 Dec 2019 15:11

Tgt Ion	Resp	Lower	Upper
96	5435		
96	100		
61	269.5	116.3	215.9#
63	1330.5	96.7	179.7#

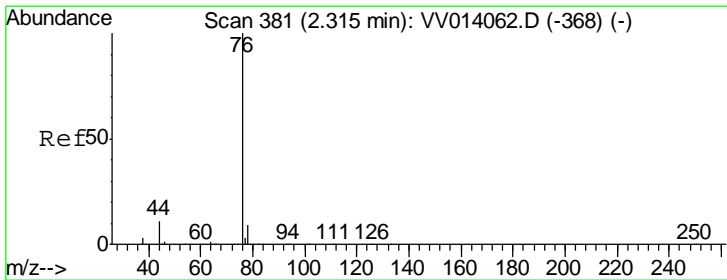
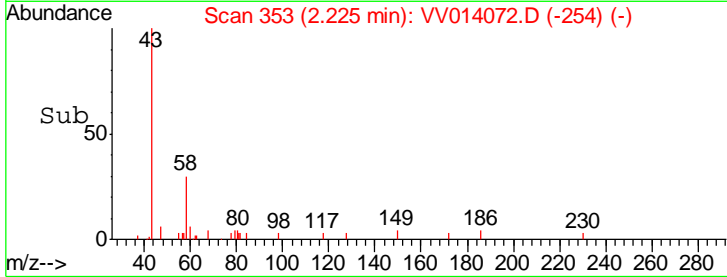
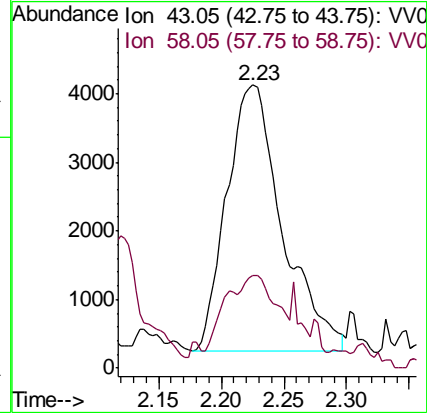
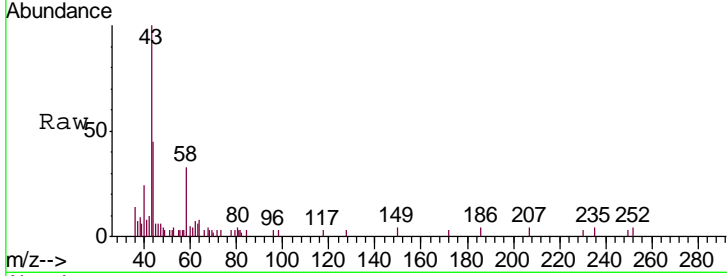




#13
 Acetone
 Concen: 3.509 ug/L
 RT: 2.23 min Scan# 353
 Delta R.T. 0.02 min
 Lab File: VV014072.D
 Acq: 16 Dec 2019 15:11

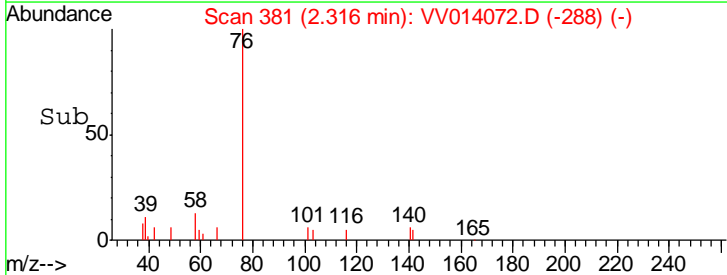
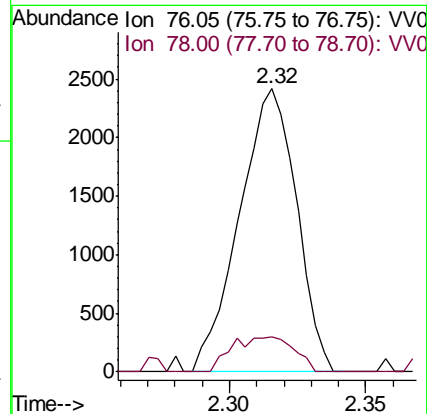
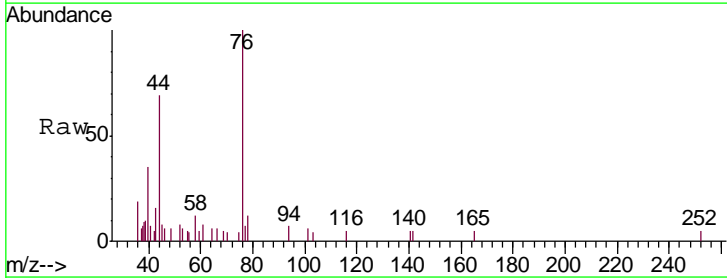
Instrument : MSVOA_V
 ClientSampled : BFDS1

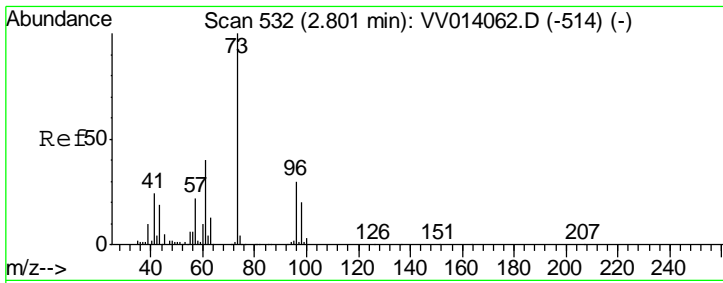
Tgt Ion	Resp	Lower	Upper
43	11931		
58	26.6	0.0	27.2



#14
 Carbon disulfide
 Concen: 0.084 ug/L
 RT: 2.32 min Scan# 381
 Delta R.T. 0.00 min
 Lab File: VV014072.D
 Acq: 16 Dec 2019 15:11

Tgt Ion	Resp	Lower	Upper
76	3512		
78	12.3	7.5	11.3#

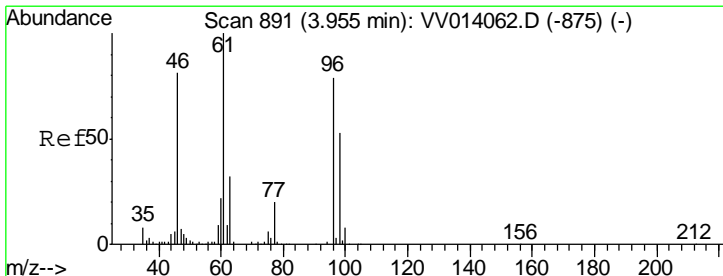
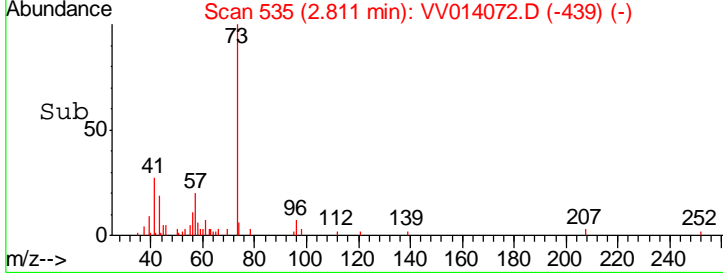
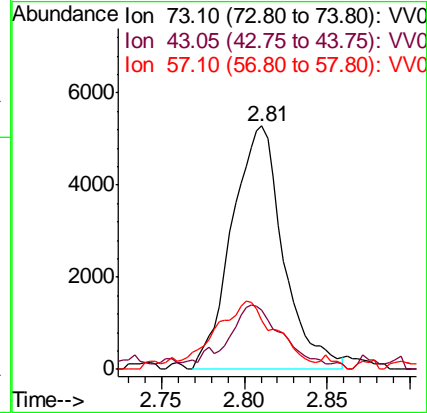
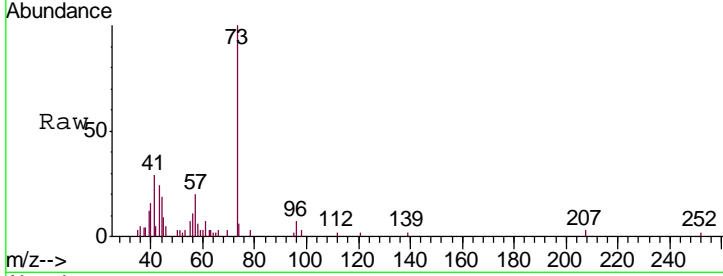




#17
 Methyl tert-butyl Ether
 Concen: 0.228 ug/L
 RT: 2.81 min Scan# 535
 Delta R.T. 0.01 min
 Lab File: VV014072.D
 Acq: 16 Dec 2019 15:11

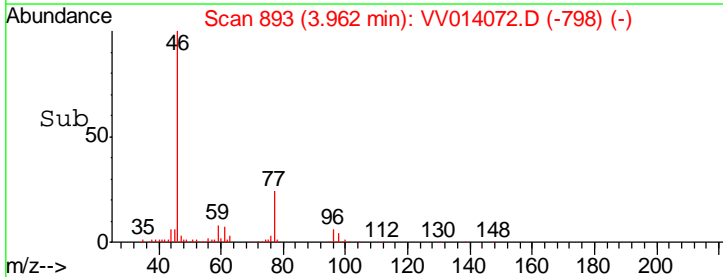
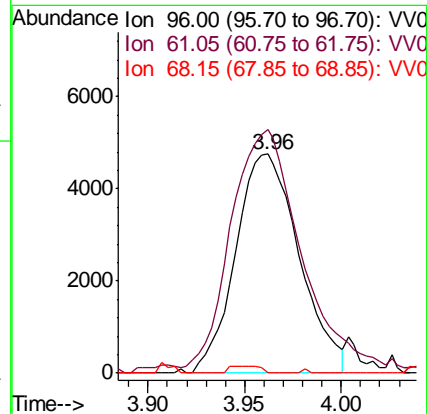
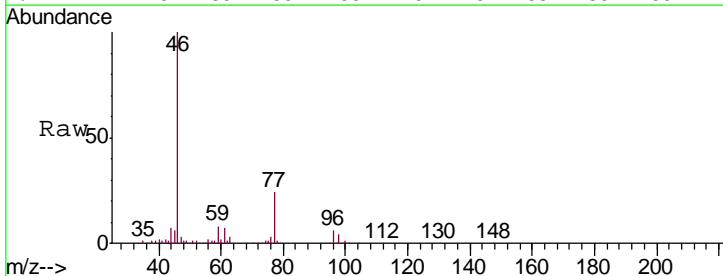
Instrument :
 MSVOA_V
ClientSampled :
 BFDS1

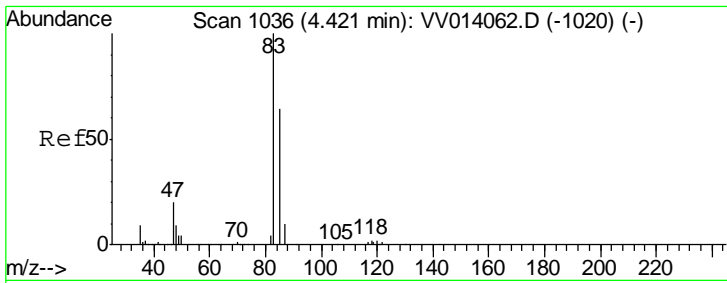
Tgt Ion	Resp	Lower	Upper
73	11348		
43	26.6	15.5	23.3#
57	33.3	17.5	26.3#



#22
 cis-1,2-Dichloroethene
 Concen: 0.450 ug/L
 RT: 3.96 min Scan# 893
 Delta R.T. 0.01 min
 Lab File: VV014072.D
 Acq: 16 Dec 2019 15:11

Tgt Ion	Resp	Lower	Upper
96	10828		
61	111.2	86.1	159.9
68	0.0	0.0	0.0

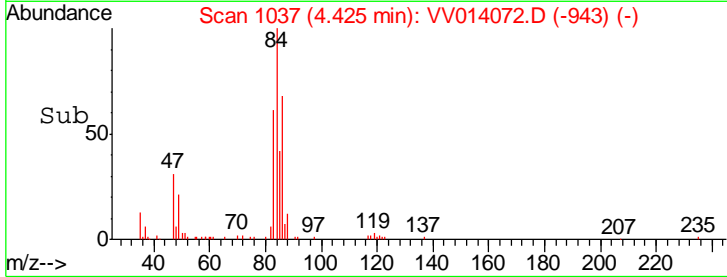
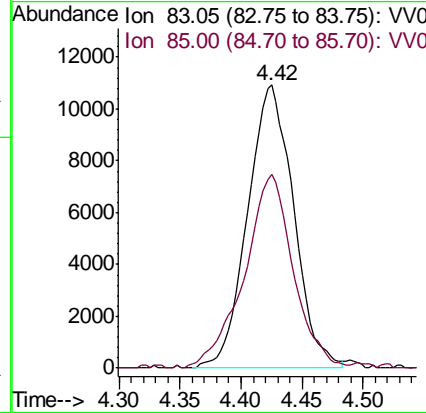
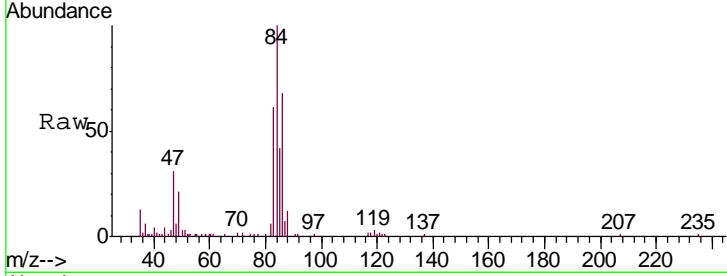




#25
 Chloroform
 Concen: 0.657 ug/L
 RT: 4.42 min Scan# 1037
 Delta R.T. 0.00 min
 Lab File: VV014072.D
 Acq: 16 Dec 2019 15:11

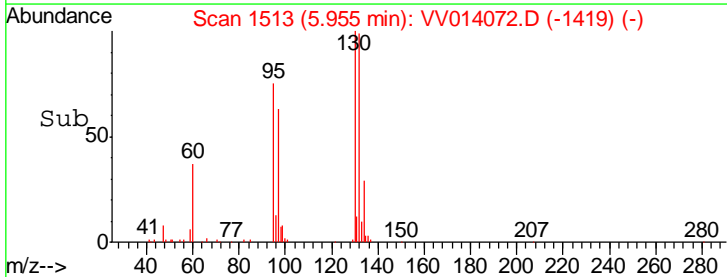
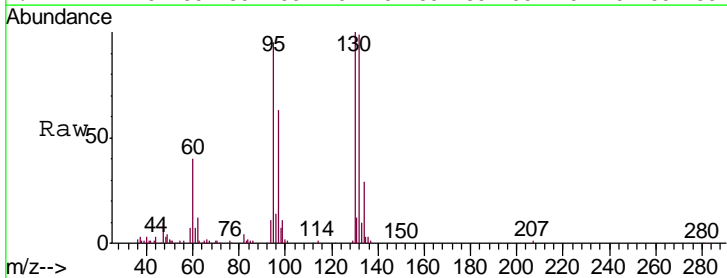
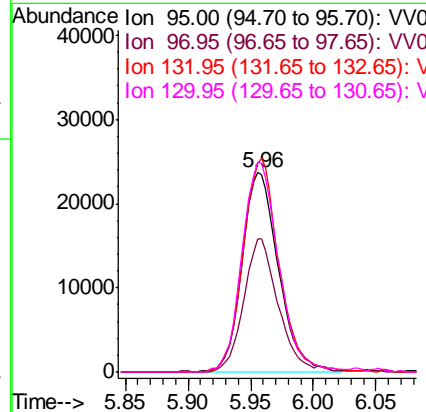
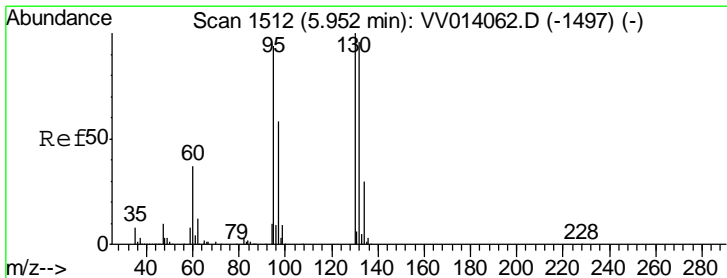
Instrument :
 MSVOA_V
 ClientSampled :
 BFDS1

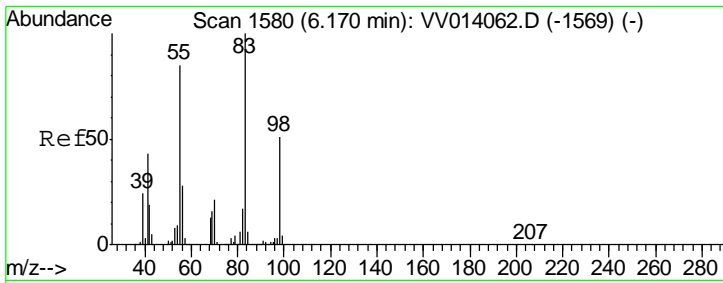
Tgt Ion: 83 Resp: 28528
 Ion Ratio Lower Upper
 83 100
 85 68.5 45.1 83.7



#34
 Trichloroethene
 Concen: 1.886 ug/L
 RT: 5.96 min Scan# 1513
 Delta R.T. 0.00 min
 Lab File: VV014072.D
 Acq: 16 Dec 2019 15:11

Tgt Ion: 95 Resp: 47633
 Ion Ratio Lower Upper
 95 100
 97 66.6 45.6 84.8
 132 104.5 70.5 130.9
 130 105.2 75.9 140.9

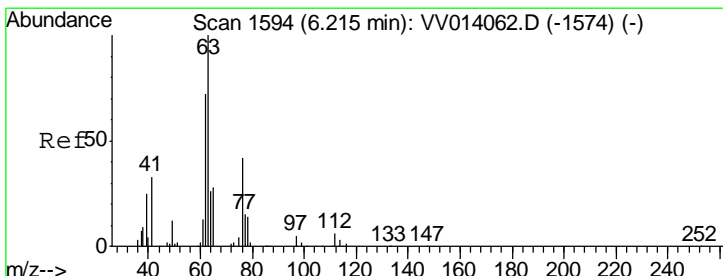
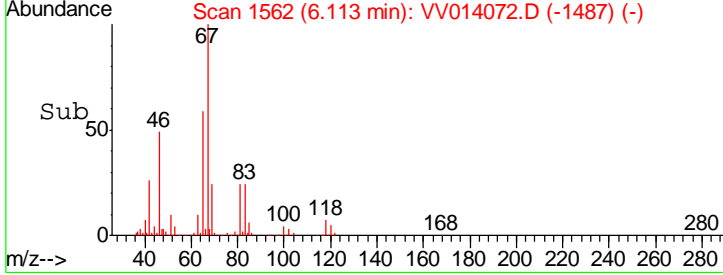
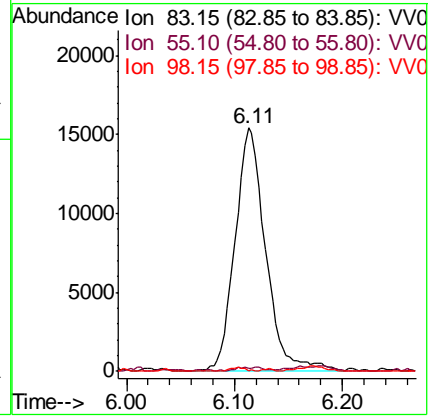
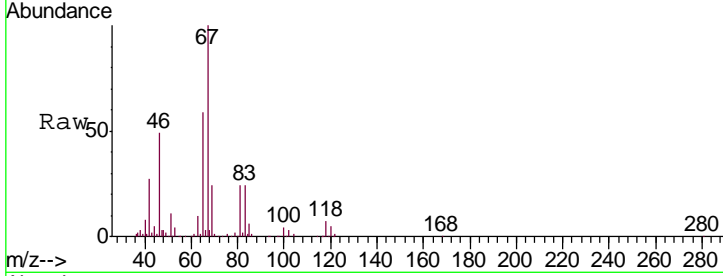




#35
 Methylcyclohexane
 Concen: 0.908 ug/L
 RT: 6.11 min Scan# 1562
 Delta R.T. -0.06 min
 Lab File: VV014072.D
 Acq: 16 Dec 2019 15:11

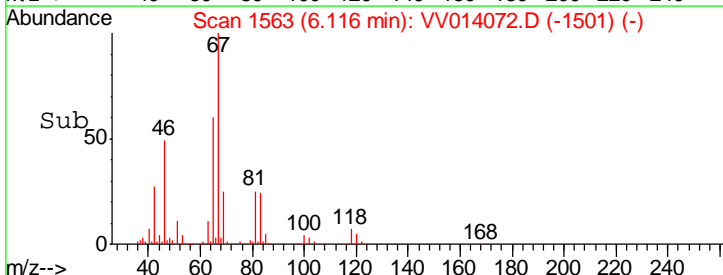
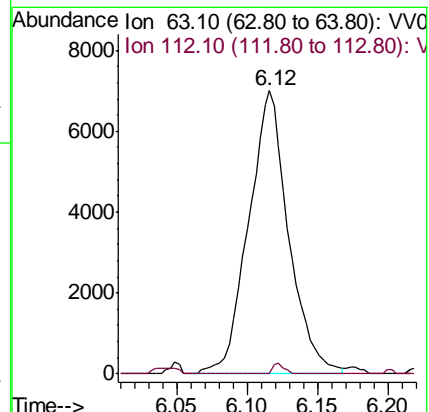
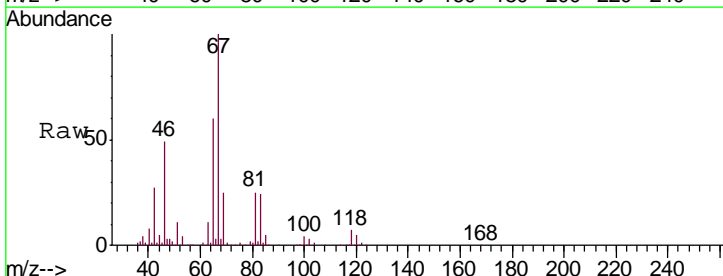
Instrument : MSVOA_V
 ClientSampled : BFDS1

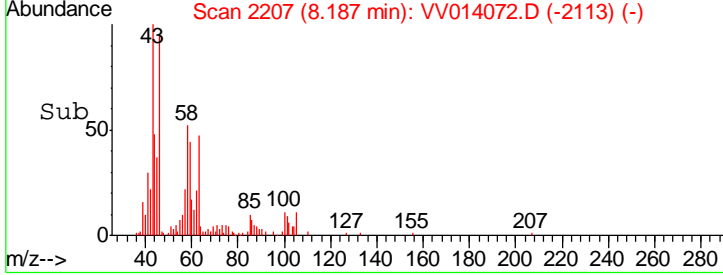
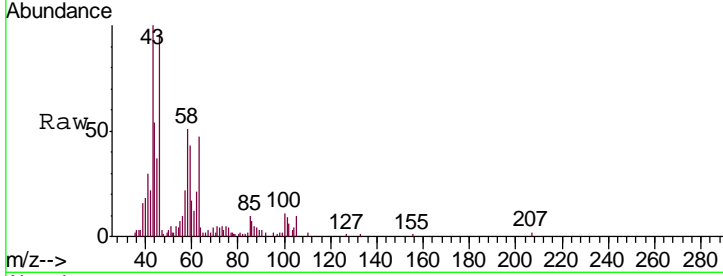
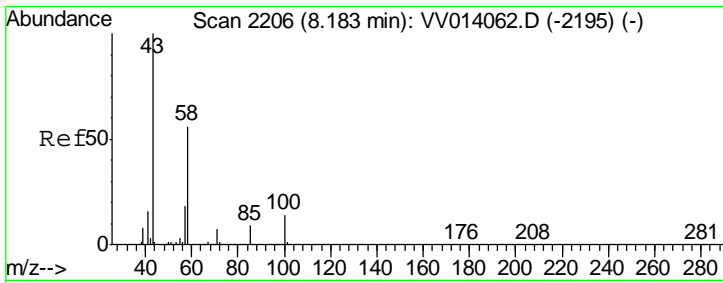
Tgt Ion	Resp	Lower	Upper
83	30597		
55	0.7	60.3	90.5#
98	0.0	38.1	57.1#



#37
 1,2-Dichloropropane
 Concen: 0.590 ug/L
 RT: 6.12 min Scan# 1563
 Delta R.T. -0.10 min
 Lab File: VV014072.D
 Acq: 16 Dec 2019 15:11

Tgt Ion	Resp	Lower	Upper
63	13897		
112	1.1	4.4	6.6#





#48
 2-Hexanone
 Concen: 2.371 ug/L
 RT: 8.19 min Scan# 2207
 Delta R.T. 0.00 min
 Lab File: VV014072.D
 Acq: 16 Dec 2019 15:11

Instrument : MSVOA_V
 ClientSampled : BFDS1

Tgt Ion: 43 Resp: 23241

Ion	Ratio	Lower	Upper
43	100		
58	45.7	43.2	64.8
57	21.3	15.4	23.2
100	12.0	10.4	15.6

