

Data Path : Z:\voasrv\HPCHEM1\MSVOA_V\Data\VW121621\
 Data File : VV024003.D
 Acq On : 16 Dec 2021 11:17
 Operator : SY/MD
 Sample : M5090-04
 Misc : 25.0mL/MSVOA_V/WATER
 ALS Vial : 5 Sample Multiplier: 1

Instrument :
 MSVOA_V
 ClientSampleId :

Quant Time: Dec 17 02:00:03 2021
 Quant Method : Z:\voasrv\HPCHEM1\MSVOA_V\Method\SFAMVTR121021WMA.M
 Quant Title : TRACE VOA SFAM1.0
 QLast Update : Thu Dec 16 04:44:29 2021
 Response via : Initial Calibration

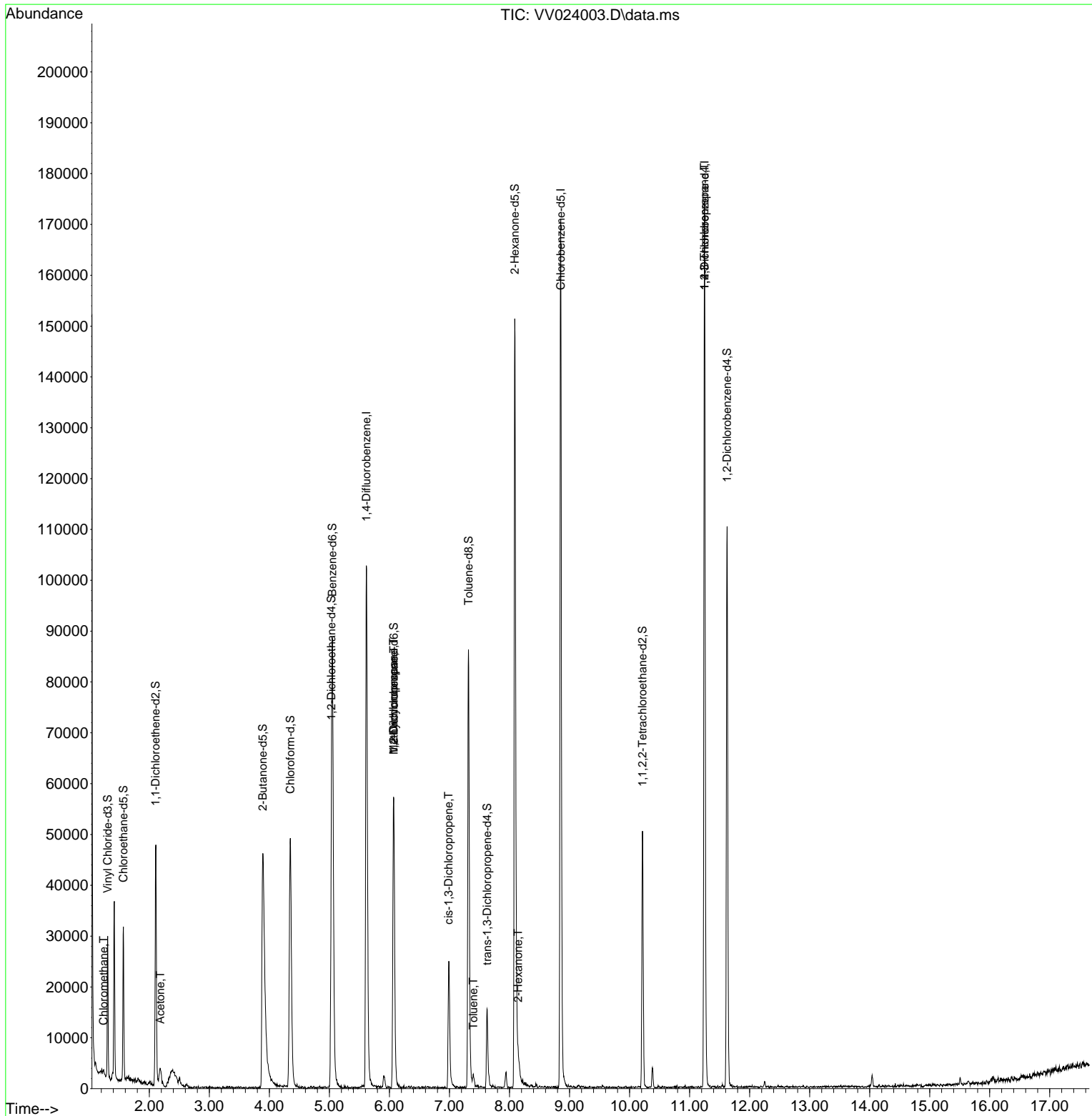
Compound	R.T.	QIon	Response	Conc	Units	Dev(Min)
Internal Standards						
1) 1,4-Difluorobenzene	5.616	114	93059	5.000	ug/L	0.00
28) Chlorobenzene-d5	8.853	117	97772	5.000	ug/L	0.00
58) 1,4-Dichlorobenzene-d4	11.249	152	48271	5.000	ug/L	0.00
System Monitoring Compounds						
4) Vinyl Chloride-d3	1.304	65	16476	3.293	ug/L	0.00
Spiked Amount	5.000	Range 40 - 130	Recovery	=	65.800%	
7) Chloroethane-d5	1.568	69	17244	4.131	ug/L	0.00
Spiked Amount	5.000	Range 65 - 130	Recovery	=	82.600%	
11) 1,1-Dichloroethene-d2	2.105	63	23726	2.430	ug/L	0.00
Spiked Amount	5.000	Range 60 - 125	Recovery	=	48.600%#	
20) 2-Butanone-d5	3.889	46	65450	66.964	ug/L	-0.02
Spiked Amount	50.000	Range 40 - 130	Recovery	=	133.920%#	
24) Chloroform-d	4.349	84	51198	4.518	ug/L	0.00
Spiked Amount	5.000	Range 70 - 125	Recovery	=	90.400%	
26) 1,2-Dichloroethane-d4	5.034	65	24612	4.665	ug/L	0.00
Spiked Amount	5.000	Range 70 - 130	Recovery	=	93.200%	
32) Benzene-d6	5.050	84	76465	3.949	ug/L	0.00
Spiked Amount	5.000	Range 70 - 125	Recovery	=	79.000%	
36) 1,2-Dichloropropane-d6	6.072	67	26492	4.534	ug/L	0.00
Spiked Amount	5.000	Range 60 - 140	Recovery	=	90.600%	
41) Toluene-d8	7.317	98	58409	3.350	ug/L	0.00
Spiked Amount	5.000	Range 70 - 130	Recovery	=	67.000%#	
43) trans-1,3-Dichloroprop...	7.628	79	9149	3.775	ug/L	0.00
Spiked Amount	5.000	Range 55 - 130	Recovery	=	75.400%	
46) 2-Hexanone-d5	8.088	63	49618	45.730	ug/L	0.00
Spiked Amount	50.000	Range 45 - 130	Recovery	=	91.460%	
56) 1,1,2,2-Tetrachloroeth...	10.217	84	22678	4.679	ug/L	0.00
Spiked Amount	5.000	Range 65 - 120	Recovery	=	93.600%	
66) 1,2-Dichlorobenzene-d4	11.625	152	29561	4.585	ug/L	0.00
Spiked Amount	5.000	Range 80 - 120	Recovery	=	91.600%	
Target Compounds						
3) Chloromethane	1.240	50	564	0.081	ug/L #	76
13) Acetone	2.182	43	5772	7.382	ug/L	72
35) Methylcyclohexane	6.072	83	7032	0.612	ug/L #	21
37) 1,2-Dichloropropane	6.069	63	3059	0.465	ug/L #	84
39) cis-1,3-Dichloropropene	6.985	75	794	0.081	ug/L #	80
42) Toluene	7.397	91	1944	0.062	ug/L	97
48) 2-Hexanone	8.143	43	2253	0.984	ug/L #	85
61) 1,2,3-Trichloropropane	11.246	75	4898	1.489	ug/L #	65

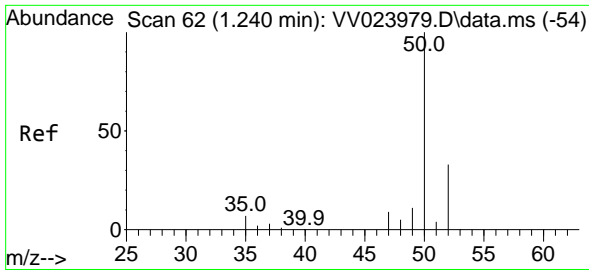
(#) = qualifier out of range (m) = manual integration (+) = signals summed

Data Path : Z:\voasrv\HPCHEM1\MSVOA_V\Data\VV121621\
 Data File : VV024003.D
 Acq On : 16 Dec 2021 11:17
 Operator : SY/MD
 Sample : M5090-04
 Misc : 25.0mL/MSVOA_V/WATER
 ALS Vial : 5 Sample Multiplier: 1

Instrument :
 MSVOA_V
 ClientSampleId :

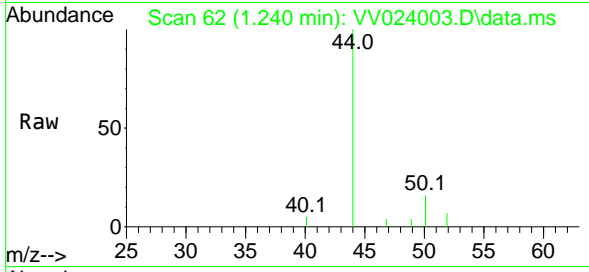
Quant Time: Dec 17 02:00:03 2021
 Quant Method : Z:\voasrv\HPCHEM1\MSVOA_V\Method\SFAMVTR121021WMA.M
 Quant Title : TRACE VOA SFAM1.0
 QLast Update : Thu Dec 16 04:44:29 2021
 Response via : Initial Calibration



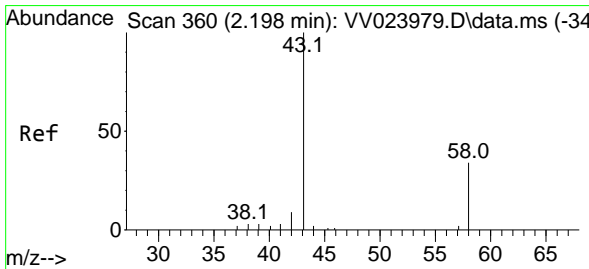
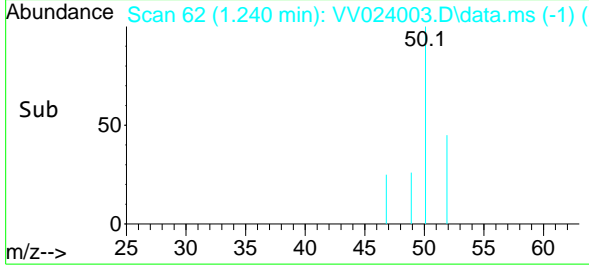
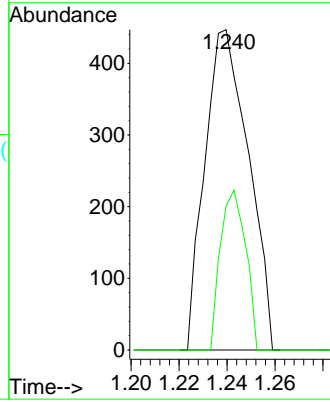


#3
 Chloromethane
 Concen: 0.081 ug/L
 RT: 1.240 min Scan# 61
 Delta R.T. -0.000 min
 Lab File: VV024003.D
 Acq: 16 Dec 2021 11:17

Instrument :
 MSVOA_V
 ClientSampleId :

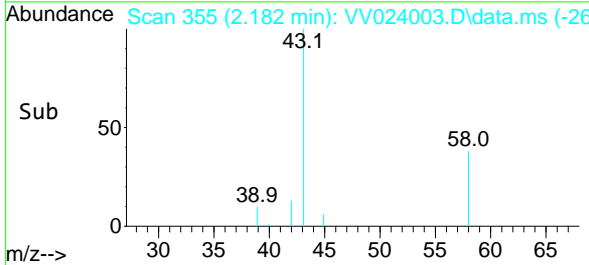
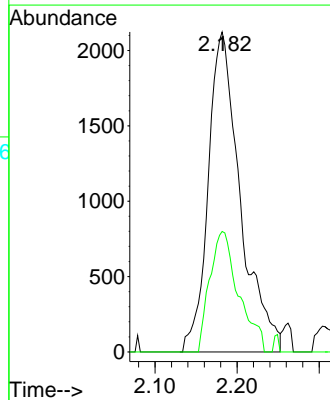
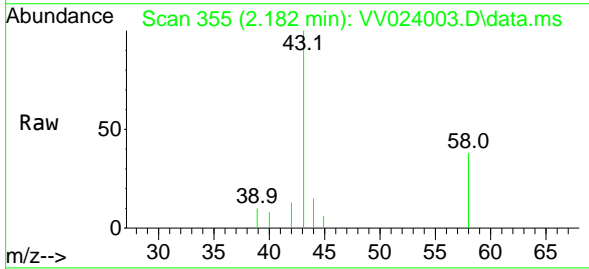


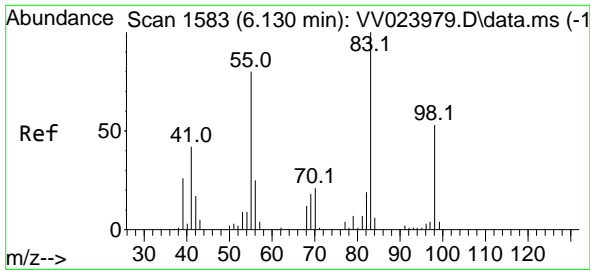
Tgt Ion: 50 Resp: 564
 Ion Ratio Lower Upper
 50 100
 52 45.0 22.0 41.0#



#13
 Acetone
 Concen: 7.382 ug/L
 RT: 2.182 min Scan# 355
 Delta R.T. -0.016 min
 Lab File: VV024003.D
 Acq: 16 Dec 2021 11:17

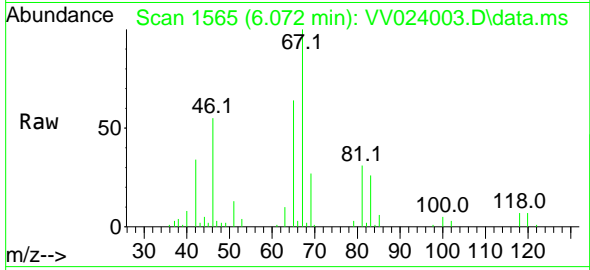
Tgt Ion: 43 Resp: 5772
 Ion Ratio Lower Upper
 43 100
 58 33.9 0.0 41.4



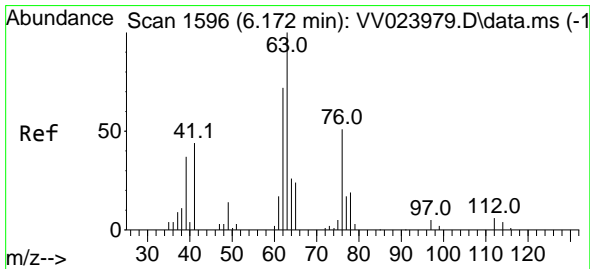
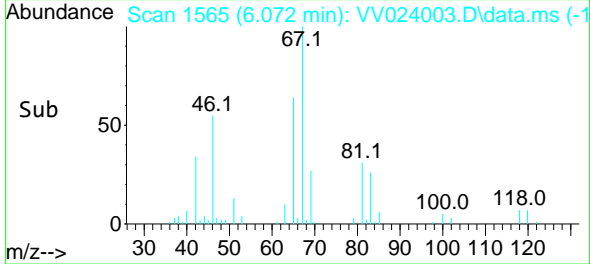
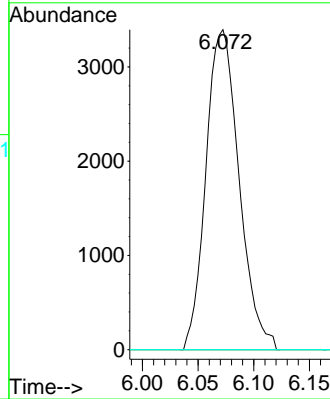


#35
 Methylcyclohexane
 Concen: 0.612 ug/L
 RT: 6.072 min Scan# 1565
 Delta R.T. -0.058 min
 Lab File: VV024003.D
 Acq: 16 Dec 2021 11:17

Instrument : MSVOA_V
 ClientSampleId :

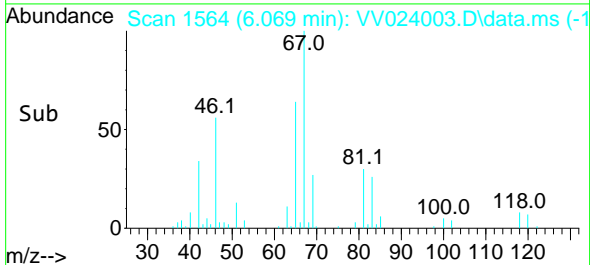
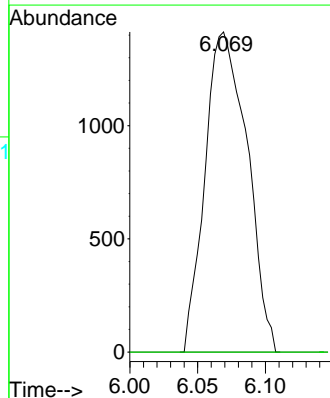
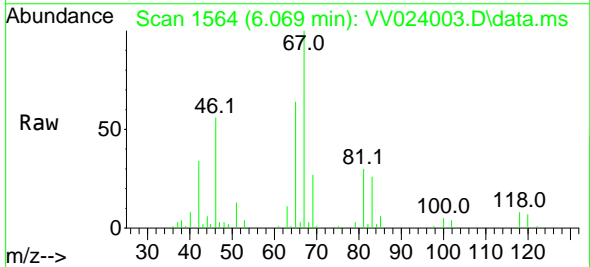


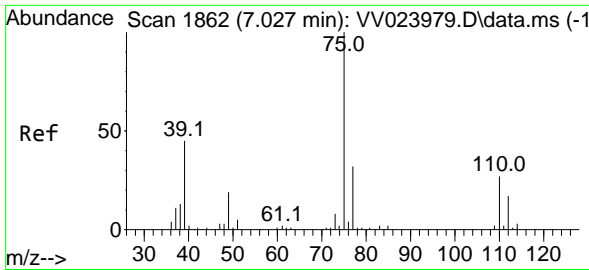
Tgt Ion: 83 Resp: 7032
 Ion Ratio Lower Upper
 83 100
 55 0.6 60.2 90.2#
 98 4.7 41.0 61.4#



#37
 1,2-Dichloropropane
 Concen: 0.465 ug/L
 RT: 6.069 min Scan# 1564
 Delta R.T. -0.103 min
 Lab File: VV024003.D
 Acq: 16 Dec 2021 11:17

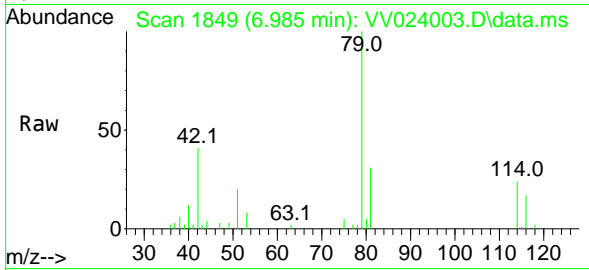
Tgt Ion: 63 Resp: 3059
 Ion Ratio Lower Upper
 63 100
 112 0.0 4.3 6.5#



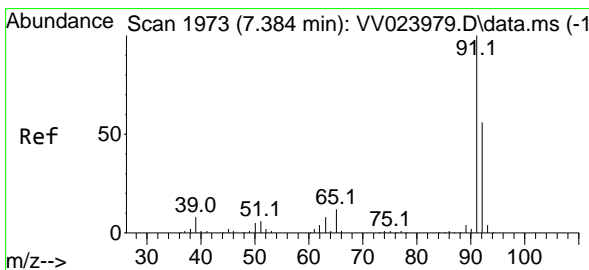
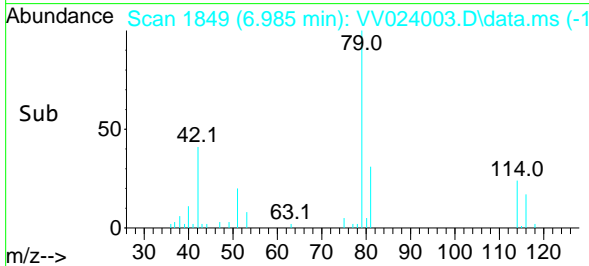
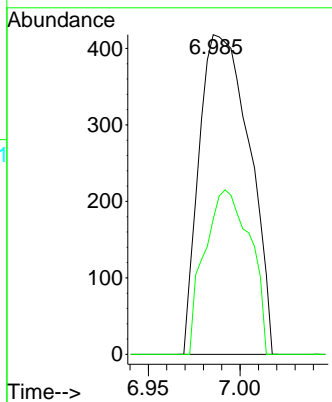


#39
 cis-1,3-Dichloropropene
 Concen: 0.081 ug/L
 RT: 6.985 min Scan# 1849
 Delta R.T. -0.042 min
 Lab File: VV024003.D
 Acq: 16 Dec 2021 11:17

Instrument : MSVOA_V
 ClientSampleId :

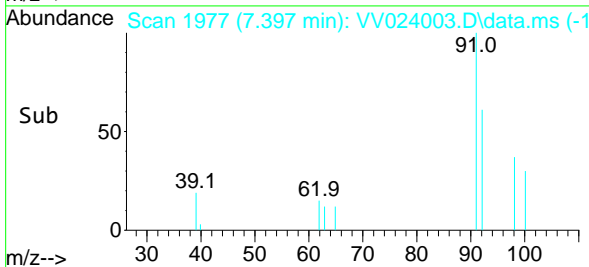
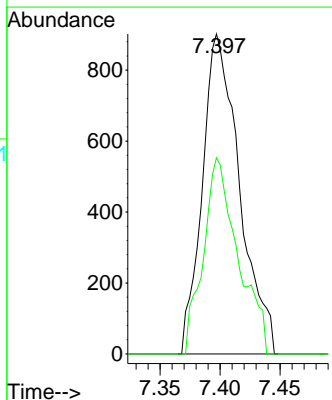
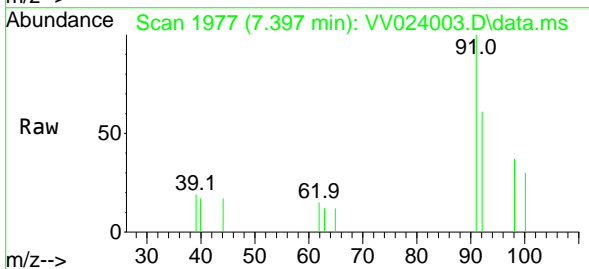


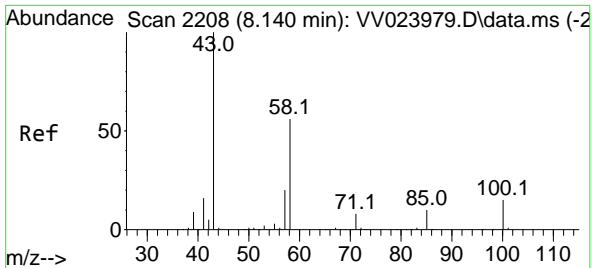
Tgt Ion: 75 Resp: 794
 Ion Ratio Lower Upper
 75 100
 77 42.3 22.0 41.0#



#42
 Toluene
 Concen: 0.062 ug/L
 RT: 7.397 min Scan# 1977
 Delta R.T. 0.013 min
 Lab File: VV024003.D
 Acq: 16 Dec 2021 11:17

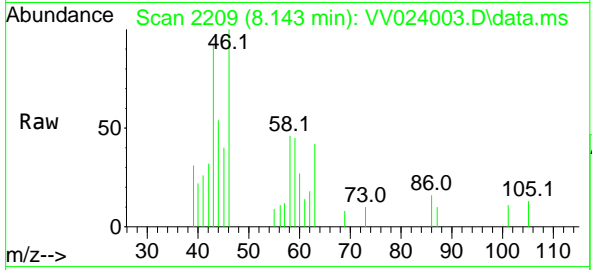
Tgt Ion: 91 Resp: 1944
 Ion Ratio Lower Upper
 91 100
 92 61.3 41.5 77.1





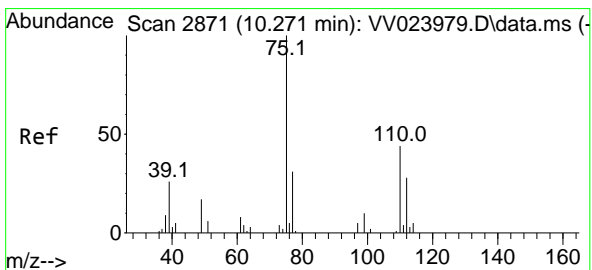
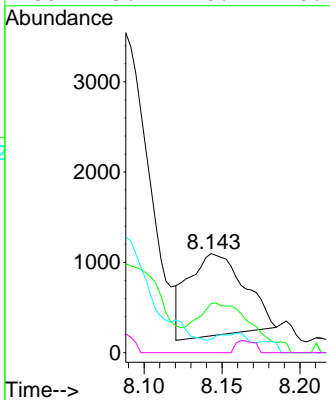
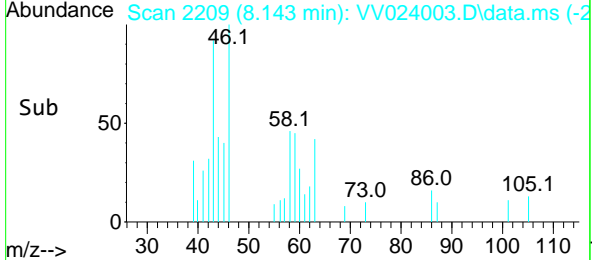
#48
 2-Hexanone
 Concen: 0.984 ug/L
 RT: 8.143 min Scan# 211
 Delta R.T. 0.003 min
 Lab File: VV024003.D
 Acq: 16 Dec 2021 11:17

Instrument : MSVOA_V
 ClientSampleId :

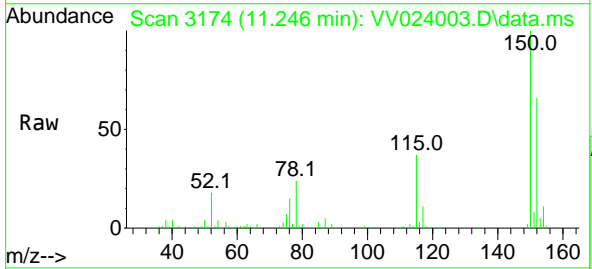


Tgt Ion: 43 Resp: 2253

Ion	Ratio	Lower	Upper
43	100		
58	62.5	44.5	66.7
57	6.8	15.1	22.7#
100	5.1	10.7	16.1#



#61
 1,2,3-Trichloropropane
 Concen: 1.489 ug/L
 RT: 11.246 min Scan# 3174
 Delta R.T. 0.974 min
 Lab File: VV024003.D
 Acq: 16 Dec 2021 11:17



Tgt Ion: 75 Resp: 4898

Ion	Ratio	Lower	Upper
75	100		
77	34.1	26.4	39.6
110	4.0	34.2	51.2#

