

Data Path : Z:\voasrv\HPCHEM1\MSVOA\_V\Data\VW121621\  
 Data File : VV024005.D  
 Acq On : 16 Dec 2021 12:04  
 Operator : SY/MD  
 Sample : M5090-06  
 Misc : 25.0mL/MSVOA\_V/WATER  
 ALS Vial : 7 Sample Multiplier: 1

Instrument :  
 MSVOA\_V  
 ClientSampleId :

Quant Time: Dec 17 02:00:17 2021  
 Quant Method : Z:\voasrv\HPCHEM1\MSVOA\_V\Method\SFAMVTR121021WMA.M  
 Quant Title : TRACE VOA SFAM1.0  
 QLast Update : Thu Dec 16 04:44:29 2021  
 Response via : Initial Calibration

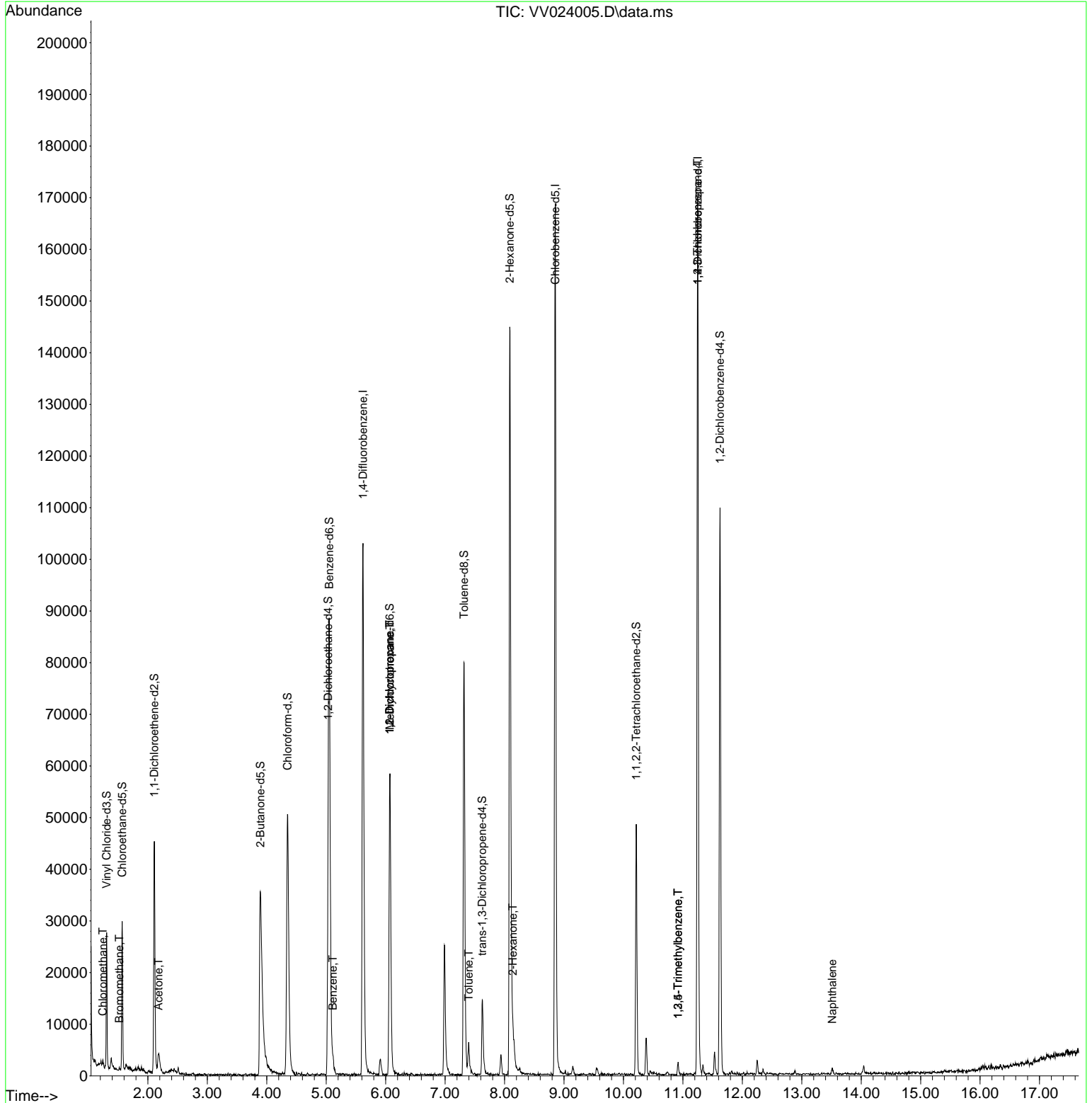
Compound	R.T.	QIon	Response	Conc	Units	Dev(Min)
-----						
Internal Standards						
1) 1,4-Difluorobenzene	5.619	114	90945	5.000	ug/L	0.00
28) Chlorobenzene-d5	8.853	117	96398	5.000	ug/L	0.00
58) 1,4-Dichlorobenzene-d4	11.249	152	47089	5.000	ug/L	0.00
System Monitoring Compounds						
4) Vinyl Chloride-d3	1.307	65	15614	3.194	ug/L	0.00
Spiked Amount	5.000	Range 40 - 130	Recovery	=	63.800%	
7) Chloroethane-d5	1.567	69	16458	4.035	ug/L	0.00
Spiked Amount	5.000	Range 65 - 130	Recovery	=	80.600%	
11) 1,1-Dichloroethene-d2	2.108	63	22488	2.356	ug/L	0.00
Spiked Amount	5.000	Range 60 - 125	Recovery	=	47.200%#	
20) 2-Butanone-d5	3.892	46	67449	70.613	ug/L	-0.02
Spiked Amount	50.000	Range 40 - 130	Recovery	=	141.220%#	
24) Chloroform-d	4.349	84	49861	4.502	ug/L	0.00
Spiked Amount	5.000	Range 70 - 125	Recovery	=	90.000%	
26) 1,2-Dichloroethane-d4	5.034	65	25651	4.975	ug/L	0.00
Spiked Amount	5.000	Range 70 - 130	Recovery	=	99.400%	
32) Benzene-d6	5.053	84	76541	4.009	ug/L	0.00
Spiked Amount	5.000	Range 70 - 125	Recovery	=	80.200%	
36) 1,2-Dichloropropane-d6	6.069	67	26801	4.653	ug/L	0.00
Spiked Amount	5.000	Range 60 - 140	Recovery	=	93.000%	
41) Toluene-d8	7.320	98	55926	3.254	ug/L	0.00
Spiked Amount	5.000	Range 70 - 130	Recovery	=	65.000%#	
43) trans-1,3-Dichloroprop...	7.625	79	8900	3.724	ug/L	0.00
Spiked Amount	5.000	Range 55 - 130	Recovery	=	74.400%	
46) 2-Hexanone-d5	8.088	63	47514	44.415	ug/L	0.00
Spiked Amount	50.000	Range 45 - 130	Recovery	=	88.820%	
56) 1,1,2,2-Tetrachloroeth...	10.217	84	21586	4.517	ug/L	0.00
Spiked Amount	5.000	Range 65 - 120	Recovery	=	90.400%	
66) 1,2-Dichlorobenzene-d4	11.625	152	29324	4.662	ug/L	0.00
Spiked Amount	5.000	Range 80 - 120	Recovery	=	93.200%	
-----						
Target Compounds						Qvalue
3) Chloromethane	1.243	50	548	0.081	ug/L	94
6) Bromomethane	1.519	94	201	0.043	ug/L #	62
13) Acetone	2.178	43	5580	7.302	ug/L	62
33) Benzene	5.111	78	2080	0.076	ug/L	100
35) Methylcyclohexane	6.072	83	7180	0.634	ug/L #	18
37) 1,2-Dichloropropane	6.069	63	3172	0.489	ug/L #	84
42) Toluene	7.400	91	4512	0.147	ug/L	93
48) 2-Hexanone	8.140	43	2336	1.035	ug/L #	74
61) 1,2,3-Trichloropropane	11.246	75	5097	1.589	ug/L #	61
62) 1,3,5-Trimethylbenzene	10.918	105	1666	0.073	ug/L	91
63) 1,2,4-Trimethylbenzene	10.918	105	1666	0.073	ug/L	97
71) Naphthalene	13.512	128	1228	0.094	ug/L #	81
-----						

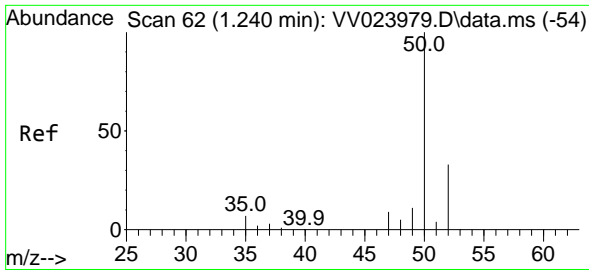
(#) = qualifier out of range (m) = manual integration (+) = signals summed

Data Path : Z:\voasrv\HPCHEM1\MSVOA\_V\Data\VV121621\  
 Data File : VV024005.D  
 Acq On : 16 Dec 2021 12:04  
 Operator : SY/MD  
 Sample : M5090-06  
 Misc : 25.0mL/MSVOA\_V/WATER  
 ALS Vial : 7 Sample Multiplier: 1

Instrument :  
 MSVOA\_V  
 ClientSampleId :

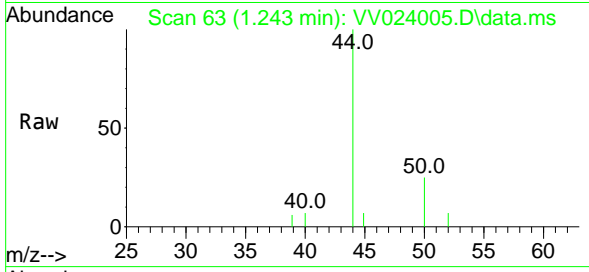
Quant Time: Dec 17 02:00:17 2021  
 Quant Method : Z:\voasrv\HPCHEM1\MSVOA\_V\Method\SFAMVTR121021WMA.M  
 Quant Title : TRACE VOA SFAM1.0  
 QLast Update : Thu Dec 16 04:44:29 2021  
 Response via : Initial Calibration



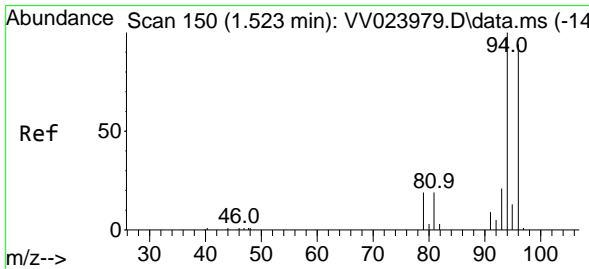
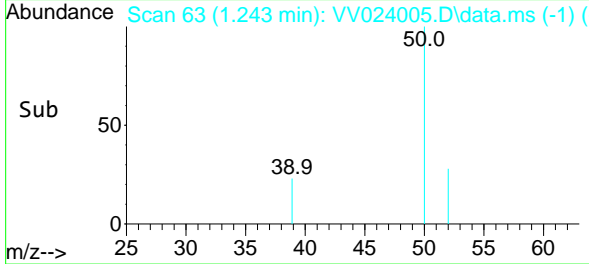
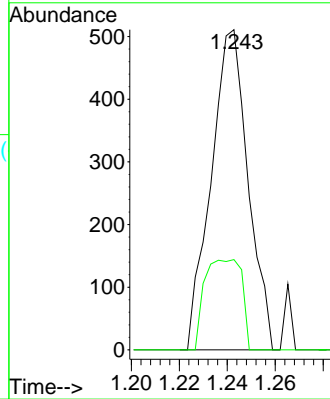


#3  
 Chloromethane  
 Concen: 0.081 ug/L  
 RT: 1.243 min Scan# 61  
 Delta R.T. 0.003 min  
 Lab File: VV024005.D  
 Acq: 16 Dec 2021 12:04

Instrument :  
 MSVOA\_V  
 ClientSampleId :

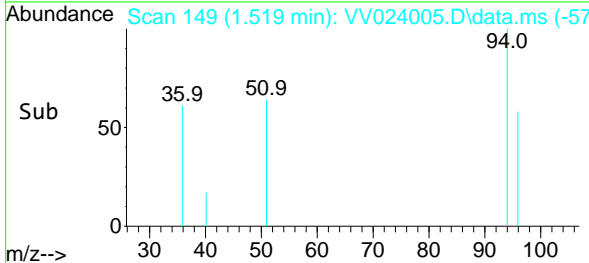
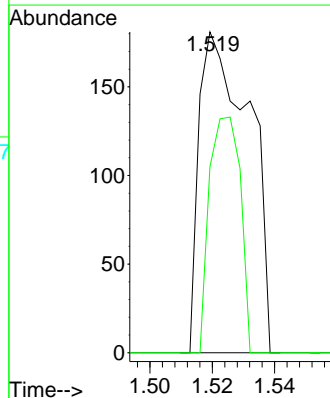
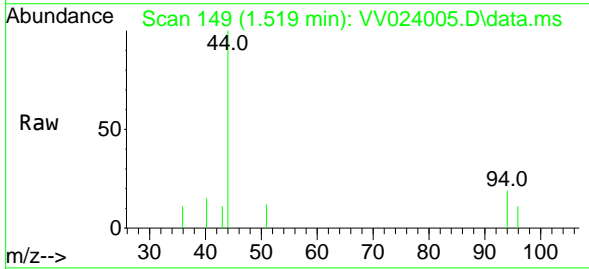


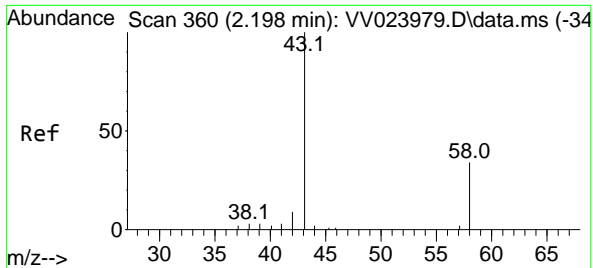
Tgt Ion: 50 Resp: 548  
 Ion Ratio Lower Upper  
 50 100  
 52 28.2 22.0 41.0



#6  
 Bromomethane  
 Concen: 0.043 ug/L  
 RT: 1.519 min Scan# 149  
 Delta R.T. -0.003 min  
 Lab File: VV024005.D  
 Acq: 16 Dec 2021 12:04

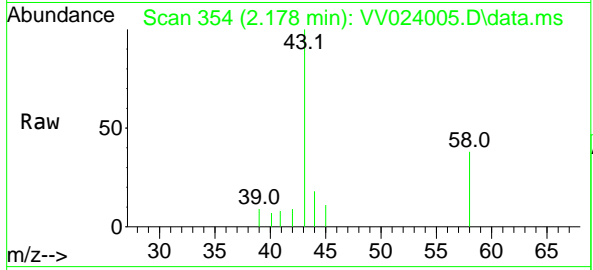
Tgt Ion: 94 Resp: 201  
 Ion Ratio Lower Upper  
 94 100  
 96 58.0 66.2 123.0#



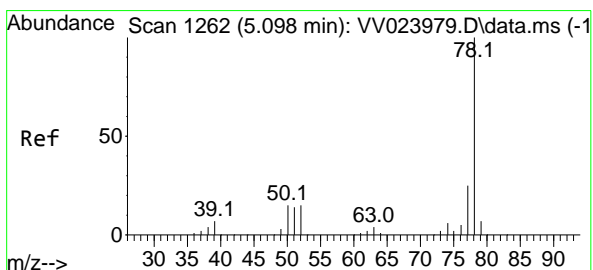
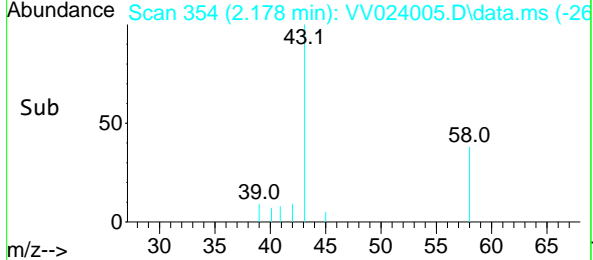
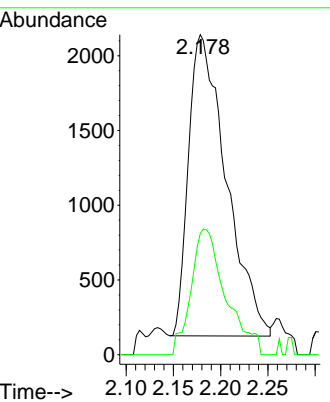


#13  
 Acetone  
 Concen: 7.302 ug/L  
 RT: 2.178 min Scan# 31  
 Delta R.T. -0.019 min  
 Lab File: VV024005.D  
 Acq: 16 Dec 2021 12:04

Instrument : MSVOA\_V  
 ClientSampleId :

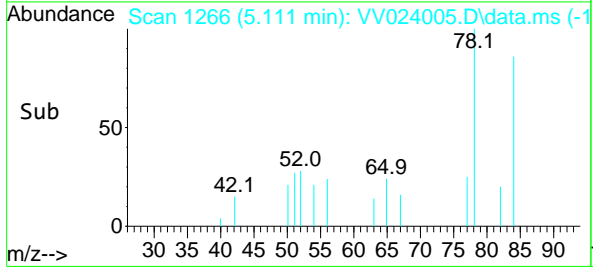
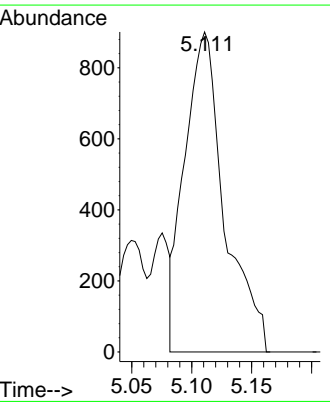
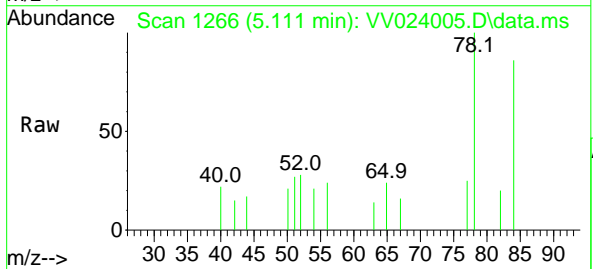


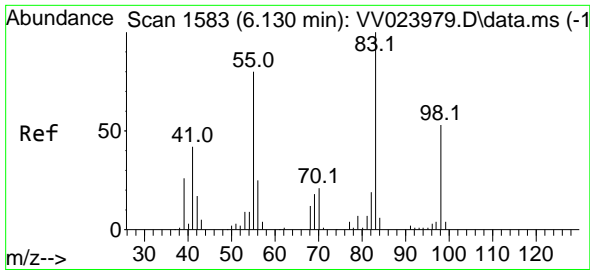
Tgt Ion: 43 Resp: 5580  
 Ion Ratio Lower Upper  
 43 100  
 58 38.4 0.0 41.4



#33  
 Benzene  
 Concen: 0.076 ug/L  
 RT: 5.111 min Scan# 1266  
 Delta R.T. 0.013 min  
 Lab File: VV024005.D  
 Acq: 16 Dec 2021 12:04

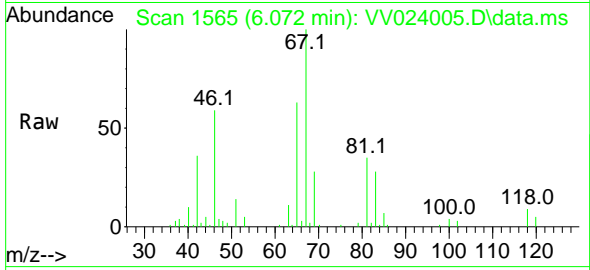
Tgt Ion: 78 Resp: 2080



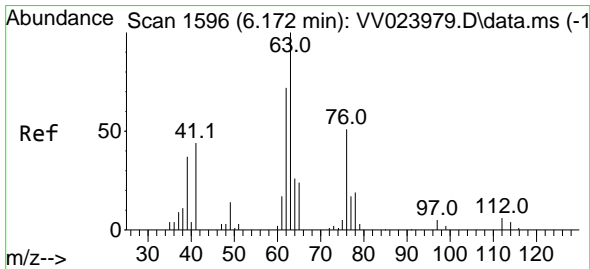
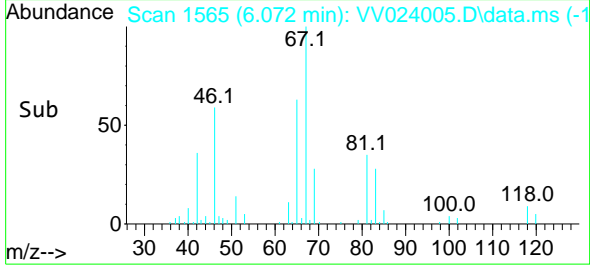
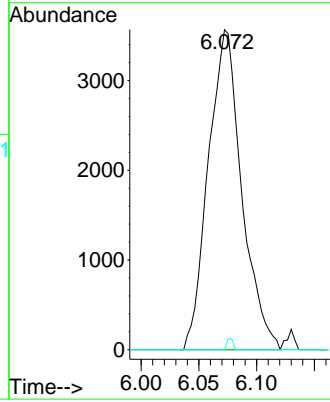


#35  
 Methylcyclohexane  
 Concen: 0.634 ug/L  
 RT: 6.072 min Scan# 1565  
 Delta R.T. -0.058 min  
 Lab File: VV024005.D  
 Acq: 16 Dec 2021 12:04

Instrument : MSVOA\_V  
 ClientSampleId :

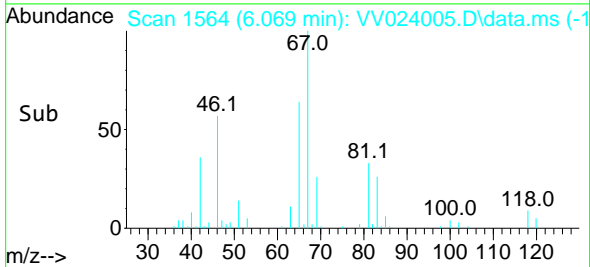
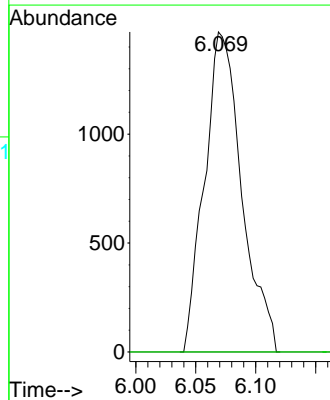
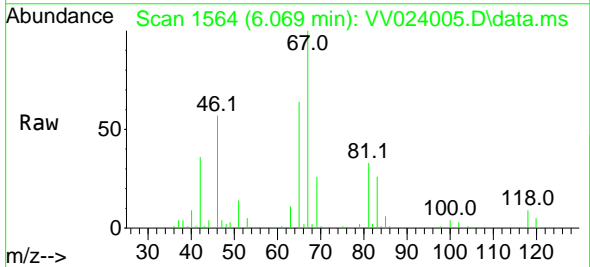


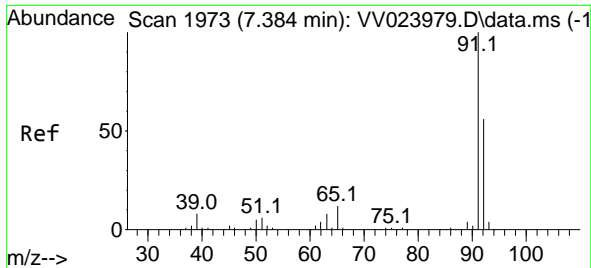
Tgt Ion: 83 Resp: 7180  
 Ion Ratio Lower Upper  
 83 100  
 55 0.0 60.2 90.2#  
 98 0.6 41.0 61.4#



#37  
 1,2-Dichloropropane  
 Concen: 0.489 ug/L  
 RT: 6.069 min Scan# 1564  
 Delta R.T. -0.103 min  
 Lab File: VV024005.D  
 Acq: 16 Dec 2021 12:04

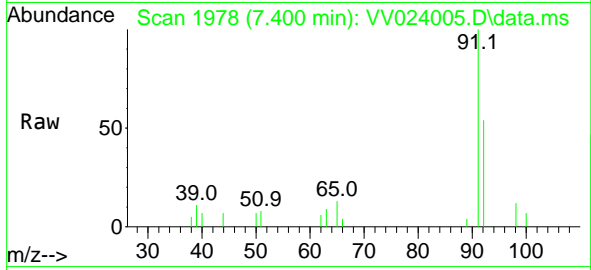
Tgt Ion: 63 Resp: 3172  
 Ion Ratio Lower Upper  
 63 100  
 112 0.0 4.3 6.5#



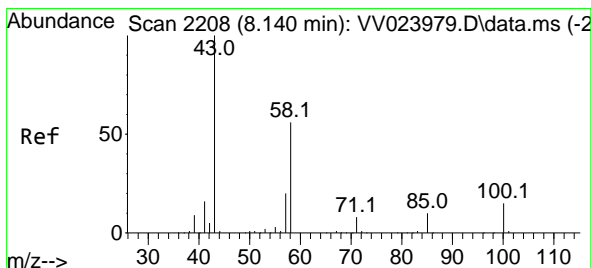
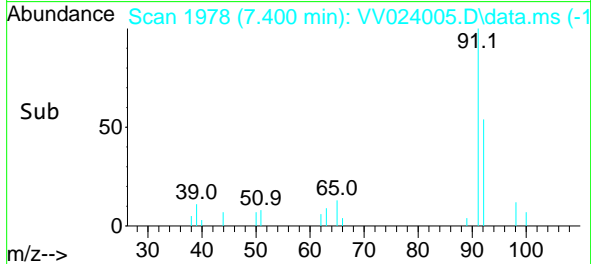
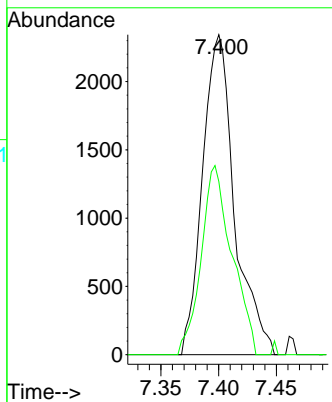


#42  
 Toluene  
 Concen: 0.147 ug/L  
 RT: 7.400 min Scan# 1973  
 Delta R.T. 0.016 min  
 Lab File: VV024005.D  
 Acq: 16 Dec 2021 12:04

Instrument : MSVOA\_V  
 ClientSampleId :

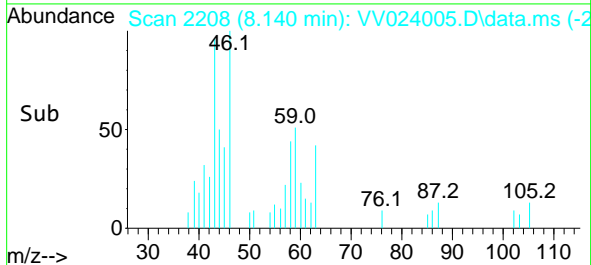
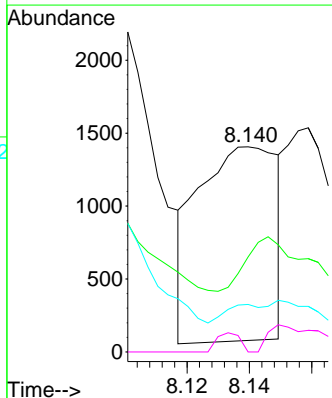
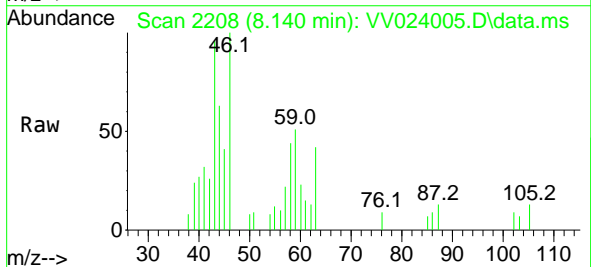


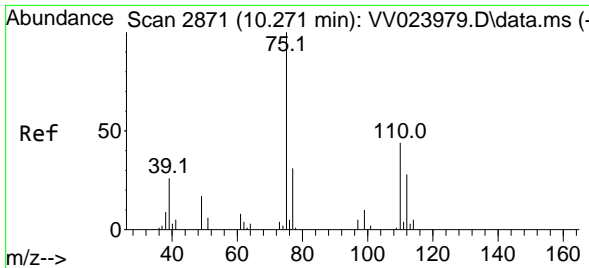
Tgt Ion: 91 Resp: 4512  
 Ion Ratio Lower Upper  
 91 100  
 92 54.1 41.5 77.1



#48  
 2-Hexanone  
 Concen: 1.035 ug/L  
 RT: 8.140 min Scan# 2208  
 Delta R.T. -0.000 min  
 Lab File: VV024005.D  
 Acq: 16 Dec 2021 12:04

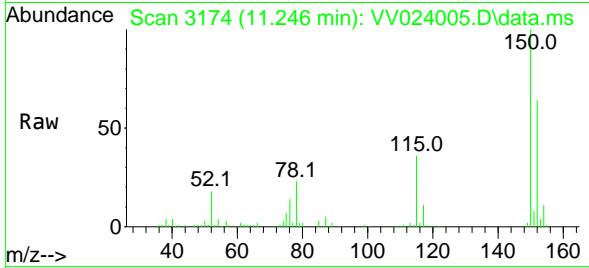
Tgt Ion: 43 Resp: 2336  
 Ion Ratio Lower Upper  
 43 100  
 58 75.3 44.5 66.7#  
 57 4.1 15.1 22.7#  
 100 8.5 10.7 16.1#



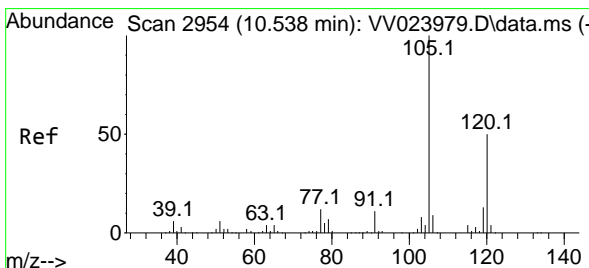
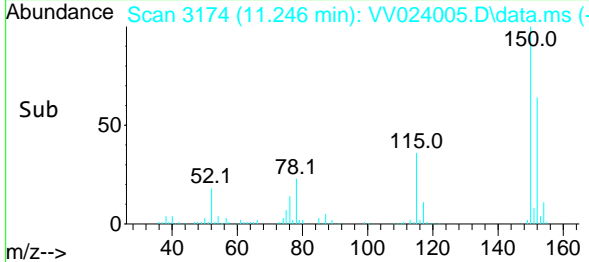
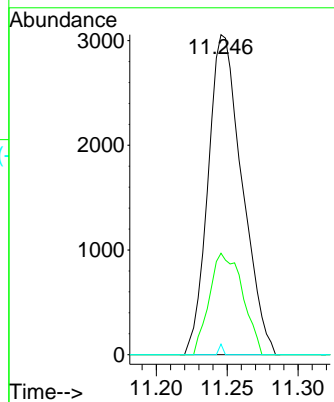


#61  
 1,2,3-Trichloropropane  
 Concen: 1.589 ug/L  
 RT: 11.246 min Scan# 3174  
 Delta R.T. 0.974 min  
 Lab File: VV024005.D  
 Acq: 16 Dec 2021 12:04

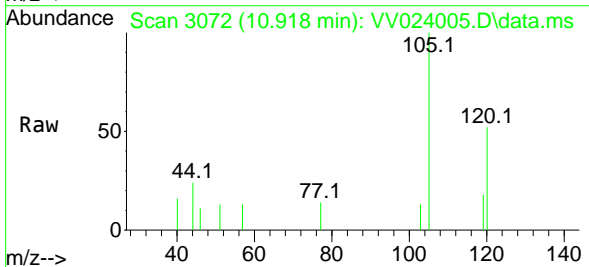
Instrument : MSVOA\_V  
 ClientSampleId :



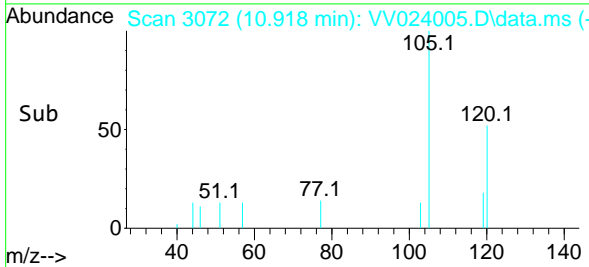
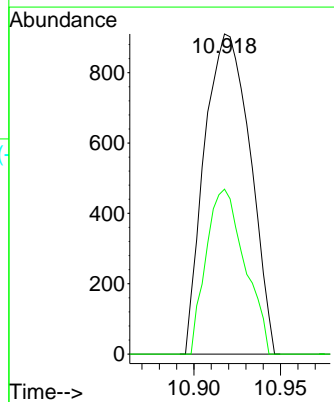
Tgt Ion: 75 Resp: 5097  
 Ion Ratio Lower Upper  
 75 100  
 77 31.0 26.4 39.6  
 110 0.4 34.2 51.2#

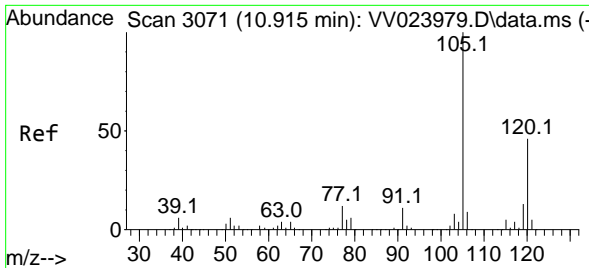


#62  
 1,3,5-Trimethylbenzene  
 Concen: 0.073 ug/L  
 RT: 10.918 min Scan# 3072  
 Delta R.T. 0.379 min  
 Lab File: VV024005.D  
 Acq: 16 Dec 2021 12:04



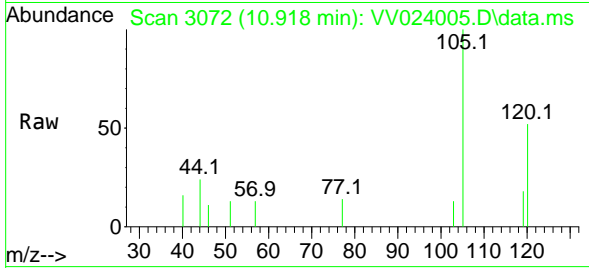
Tgt Ion: 105 Resp: 1666  
 Ion Ratio Lower Upper  
 105 100  
 120 43.6 40.1 60.1



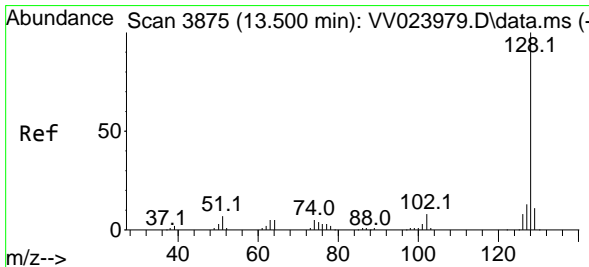
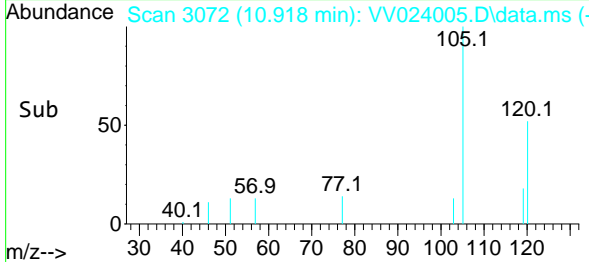
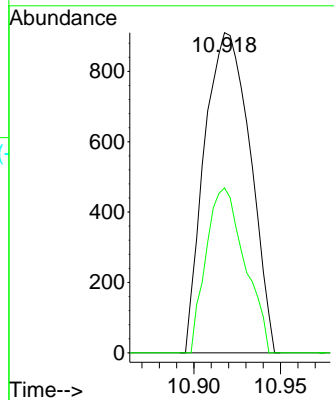


#63  
 1,2,4-Trimethylbenzene  
 Concen: 0.073 ug/L  
 RT: 10.918 min Scan# 3071  
 Delta R.T. 0.003 min  
 Lab File: VV024005.D  
 Acq: 16 Dec 2021 12:04

Instrument : MSVOA\_V  
 ClientSampleId :



Tgt Ion:105 Resp: 1666  
 Ion Ratio Lower Upper  
 105 100  
 120 43.6 36.7 55.1



#71  
 Naphthalene  
 Concen: 0.094 ug/L  
 RT: 13.512 min Scan# 3879  
 Delta R.T. 0.013 min  
 Lab File: VV024005.D  
 Acq: 16 Dec 2021 12:04

Tgt Ion:128 Resp: 1228  
 Ion Ratio Lower Upper  
 128 100  
 129 0.0 9.0 13.4#  
 127 9.0 10.2 15.4#

