

Data Path : Z:\voasrv\HPCHEM1\MSVOA\_V\Data\VW121621\  
 Data File : VV024031.D  
 Acq On : 16 Dec 2021 23:18  
 Operator : SY/MD  
 Sample : M5133-04  
 Misc : 25.0mL/MSVOA\_V/WATER  
 ALS Vial : 35 Sample Multiplier: 1

Instrument :  
 MSVOA\_V  
 ClientSampleId :

Quant Time: Dec 17 05:33:14 2021  
 Quant Method : Z:\voasrv\HPCHEM1\MSVOA\_V\Method\SFAMVTR121021WMA.M  
 Quant Title : TRACE VOA SFAM1.0  
 QLast Update : Thu Dec 16 04:44:29 2021  
 Response via : Initial Calibration

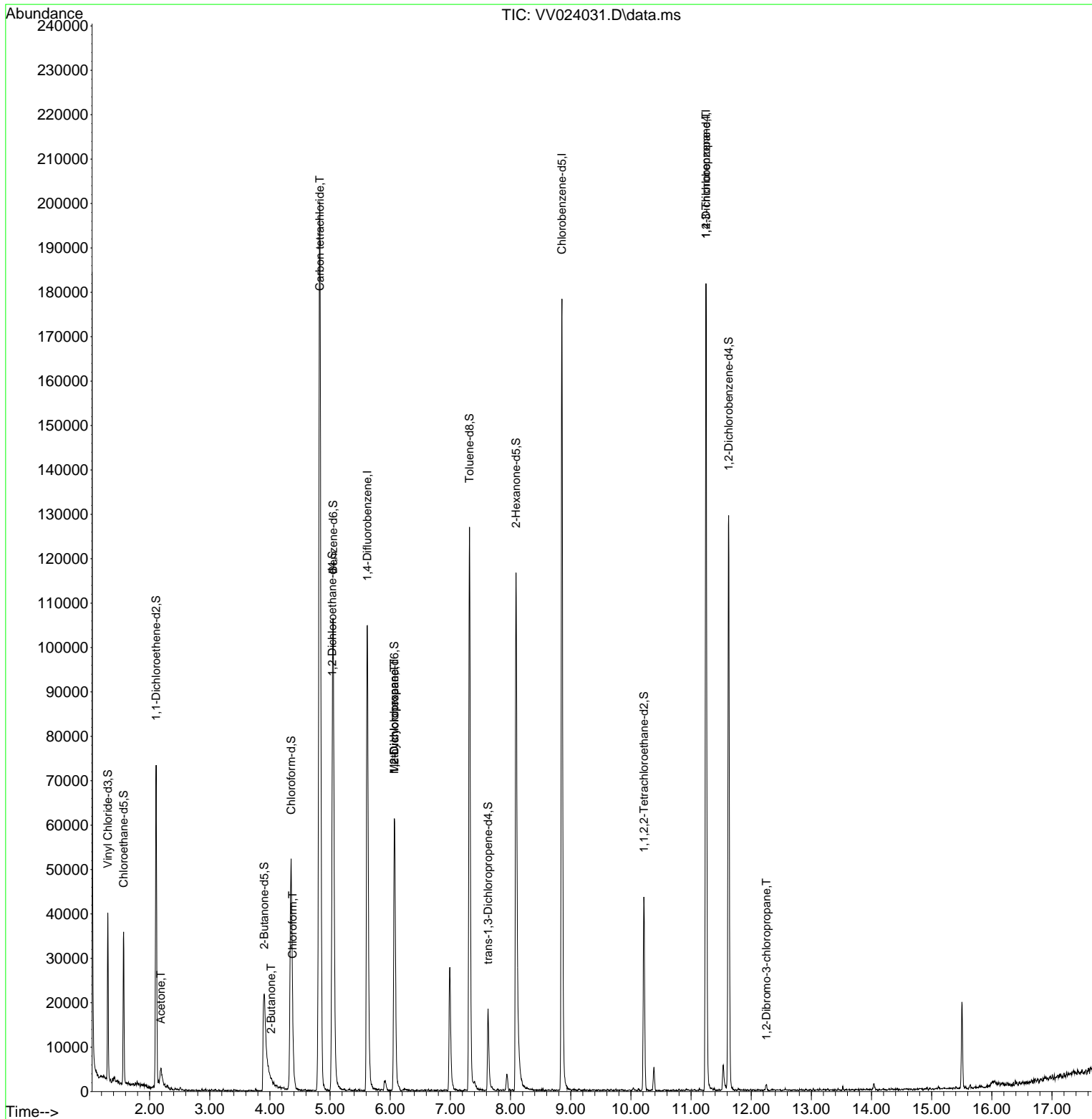
Compound	R.T.	QIon	Response	Conc	Units	Dev(Min)
Internal Standards						
1) 1,4-Difluorobenzene	5.619	114	95604	5.000	ug/L	0.00
28) Chlorobenzene-d5	8.854	117	101573	5.000	ug/L	0.00
58) 1,4-Dichlorobenzene-d4	11.249	152	48858	5.000	ug/L	0.00
System Monitoring Compounds						
4) Vinyl Chloride-d3	1.304	65	22430	4.364	ug/L	0.00
Spiked Amount	5.000	Range 40 - 130	Recovery	=	87.200%	
7) Chloroethane-d5	1.568	69	20301	4.734	ug/L	0.00
Spiked Amount	5.000	Range 65 - 130	Recovery	=	94.600%	
11) 1,1-Dichloroethene-d2	2.108	63	36187	3.607	ug/L	0.00
Spiked Amount	5.000	Range 60 - 125	Recovery	=	72.200%	
20) 2-Butanone-d5	3.905	46	49857	49.652	ug/L	0.00
Spiked Amount	50.000	Range 40 - 130	Recovery	=	99.300%	
24) Chloroform-d	4.352	84	50909	4.373	ug/L	0.00
Spiked Amount	5.000	Range 70 - 125	Recovery	=	87.400%	
26) 1,2-Dichloroethane-d4	5.037	65	26520	4.893	ug/L	0.00
Spiked Amount	5.000	Range 70 - 130	Recovery	=	97.800%	
32) Benzene-d6	5.050	84	97359	4.839	ug/L	0.00
Spiked Amount	5.000	Range 70 - 125	Recovery	=	96.800%	
36) 1,2-Dichloropropane-d6	6.069	67	29113	4.796	ug/L	0.00
Spiked Amount	5.000	Range 60 - 140	Recovery	=	96.000%	
41) Toluene-d8	7.317	98	85757	4.735	ug/L	0.00
Spiked Amount	5.000	Range 70 - 130	Recovery	=	94.600%	
43) trans-1,3-Dichloroprop...	7.625	79	10148	4.030	ug/L	0.00
Spiked Amount	5.000	Range 55 - 130	Recovery	=	80.600%	
46) 2-Hexanone-d5	8.091	63	40871	36.258	ug/L	0.00
Spiked Amount	50.000	Range 45 - 130	Recovery	=	72.520%	
56) 1,1,2,2-Tetrachloroeth...	10.217	84	19360	3.845	ug/L	0.00
Spiked Amount	5.000	Range 65 - 120	Recovery	=	77.000%	
66) 1,2-Dichlorobenzene-d4	11.625	152	35279	5.406	ug/L	0.00
Spiked Amount	5.000	Range 80 - 120	Recovery	=	108.200%	
Target Compounds						
13) Acetone	2.188	43	8477	10.552	ug/L	92
21) 2-Butanone	4.018	43	1043	0.909	ug/L	85
25) Chloroform	4.378	83	6019	0.425	ug/L	88
31) Carbon tetrachloride	4.828	117	144142	11.539	ug/L	98
35) Methylcyclohexane	6.069	83	7539	0.632	ug/L #	19
37) 1,2-Dichloropropane	6.069	63	3528	0.517	ug/L #	84
61) 1,2,3-Trichloropropane	11.249	75	5188	1.559	ug/L #	61
68) 1,2-Dibromo-3-chloropr...	12.252	75	72	0.099	ug/L #	1

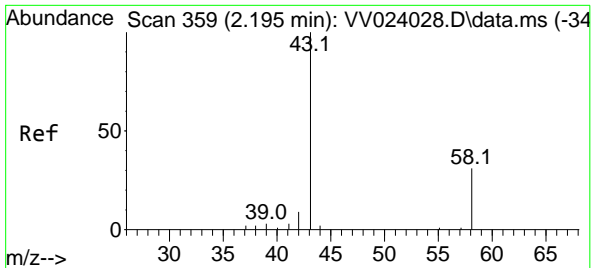
(#) = qualifier out of range (m) = manual integration (+) = signals summed

Data Path : Z:\voasrv\HPCHEM1\MSVOA\_V\Data\VV121621\  
 Data File : VV024031.D  
 Acq On : 16 Dec 2021 23:18  
 Operator : SY/MD  
 Sample : M5133-04  
 Misc : 25.0mL/MSVOA\_V/WATER  
 ALS Vial : 35 Sample Multiplier: 1

Instrument :  
 MSVOA\_V  
 ClientSampleId :

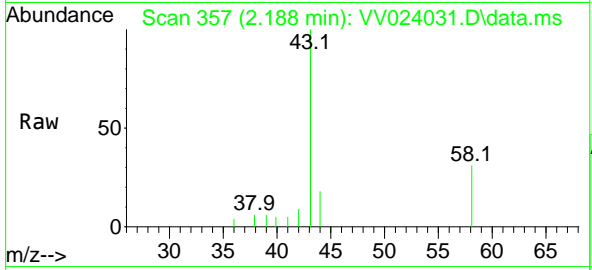
Quant Time: Dec 17 05:33:14 2021  
 Quant Method : Z:\voasrv\HPCHEM1\MSVOA\_V\Method\SFAMVTR121021WMA.M  
 Quant Title : TRACE VOA SFAM1.0  
 QLast Update : Thu Dec 16 04:44:29 2021  
 Response via : Initial Calibration



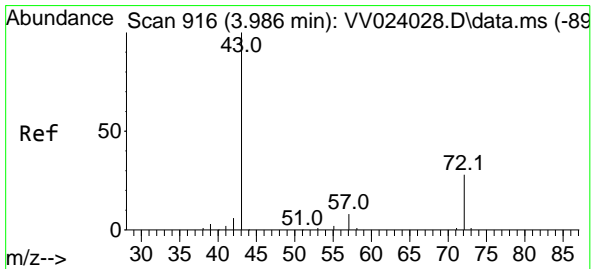
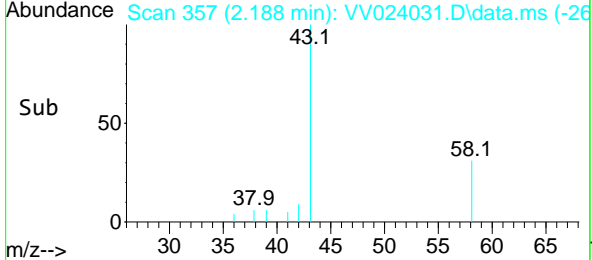
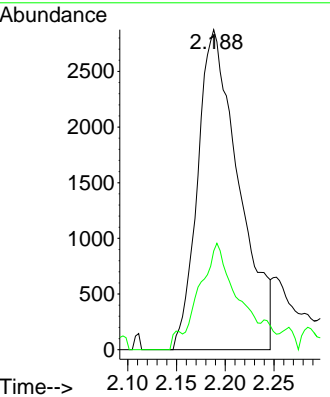


#13  
 Acetone  
 Concen: 10.552 ug/L  
 RT: 2.188 min Scan# 31  
 Delta R.T. -0.010 min  
 Lab File: VV024031.D  
 Acq: 16 Dec 2021 23:18

Instrument : MSVOA\_V  
 ClientSampleId :

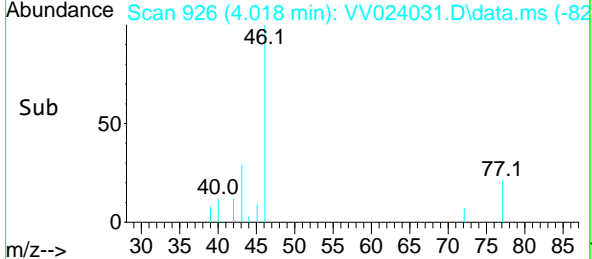
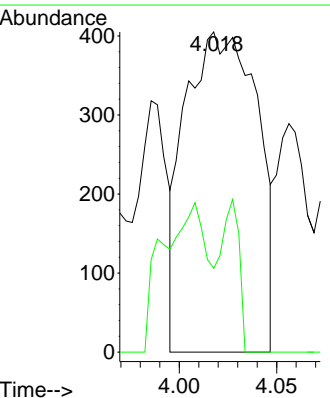
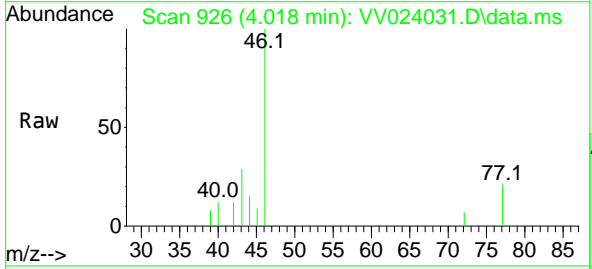


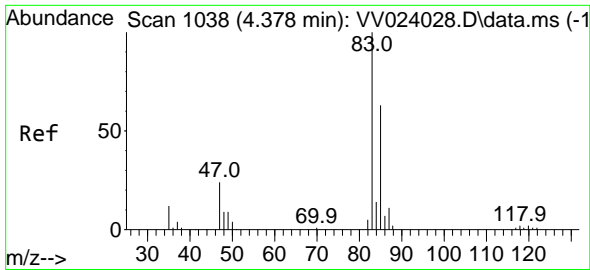
Tgt Ion: 43 Resp: 8477  
 Ion Ratio Lower Upper  
 43 100  
 58 24.5 0.0 41.4



#21  
 2-Butanone  
 Concen: 0.909 ug/L  
 RT: 4.018 min Scan# 926  
 Delta R.T. 0.029 min  
 Lab File: VV024031.D  
 Acq: 16 Dec 2021 23:18

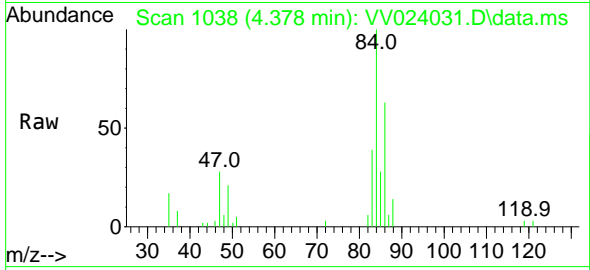
Tgt Ion: 43 Resp: 1043  
 Ion Ratio Lower Upper  
 43 100  
 72 29.1 11.1 33.1



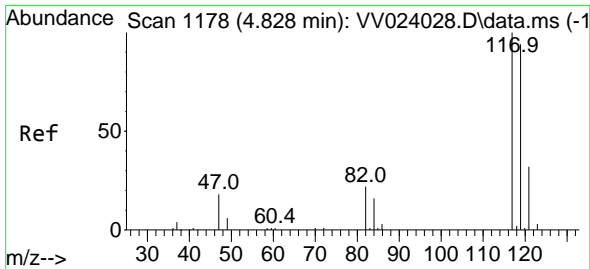
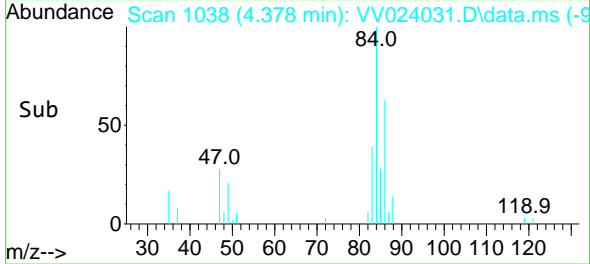
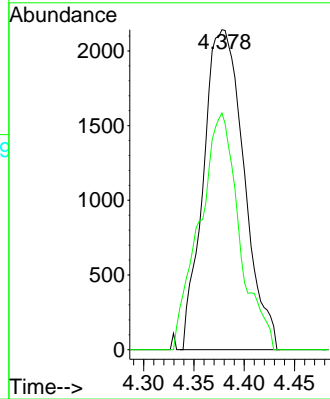


#25  
 Chloroform  
 Concen: 0.425 ug/L  
 RT: 4.378 min Scan# 1038  
 Delta R.T. 0.006 min  
 Lab File: VV024031.D  
 Acq: 16 Dec 2021 23:18

Instrument : MSVOA\_V  
 ClientSampleId :

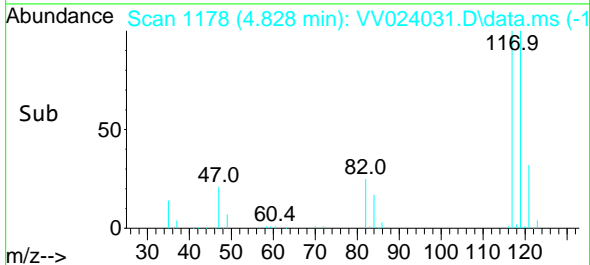
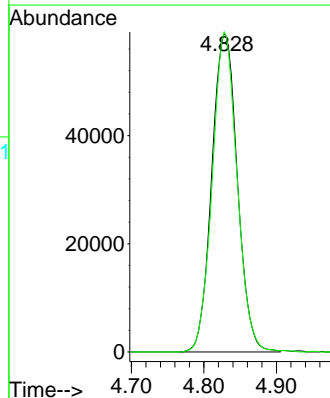
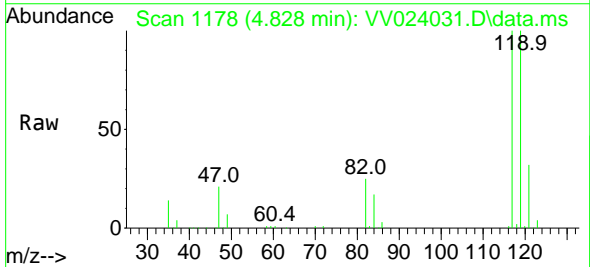


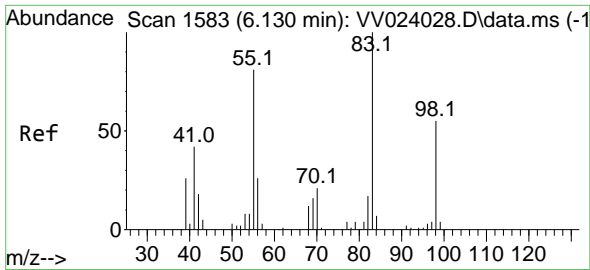
Tgt Ion: 83 Resp: 6019  
 Ion Ratio Lower Upper  
 83 100  
 85 73.9 45.2 84.0



#31  
 Carbon tetrachloride  
 Concen: 11.539 ug/L  
 RT: 4.828 min Scan# 1178  
 Delta R.T. 0.003 min  
 Lab File: VV024031.D  
 Acq: 16 Dec 2021 23:18

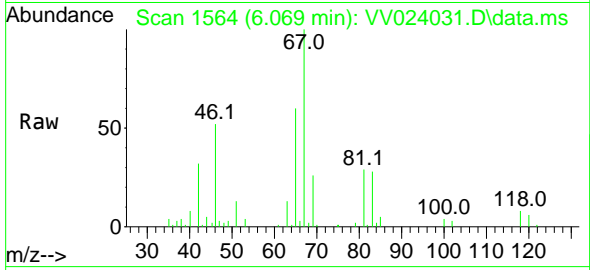
Tgt Ion: 117 Resp: 144142  
 Ion Ratio Lower Upper  
 117 100  
 119 97.4 76.6 114.8



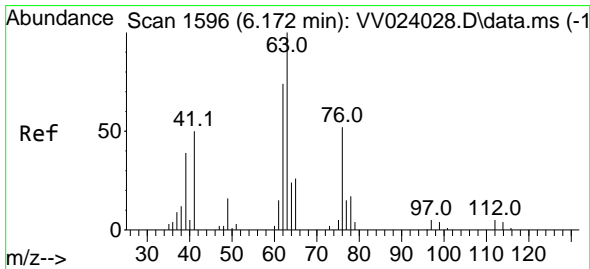
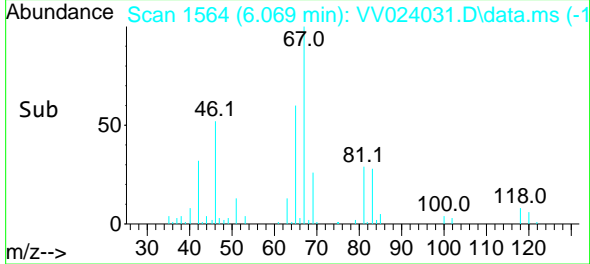
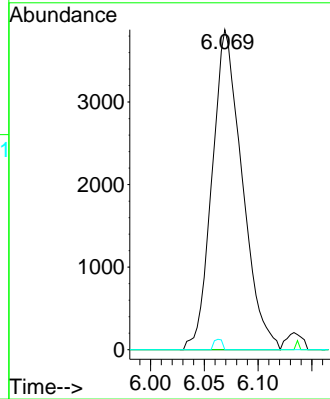


#35  
 Methylcyclohexane  
 Concen: 0.632 ug/L  
 RT: 6.069 min Scan# 1564  
 Delta R.T. -0.061 min  
 Lab File: VV024031.D  
 Acq: 16 Dec 2021 23:18

Instrument : MSVOA\_V  
 ClientSampleId :

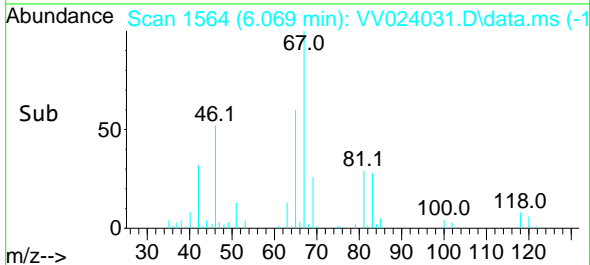
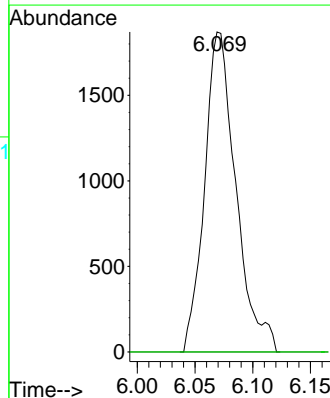
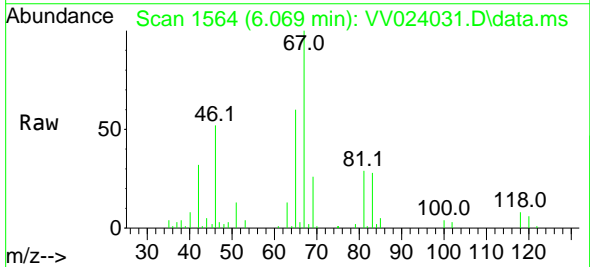


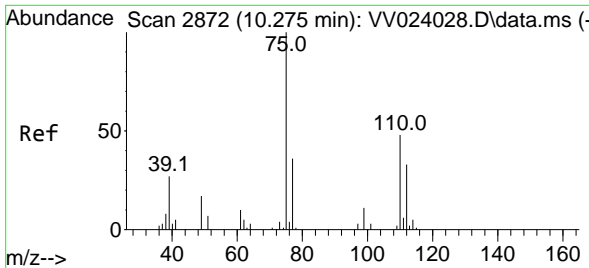
Tgt Ion: 83 Resp: 7539  
 Ion Ratio Lower Upper  
 83 100  
 55 0.3 60.2 90.2#  
 98 0.9 41.0 61.4#



#37  
 1,2-Dichloropropane  
 Concen: 0.517 ug/L  
 RT: 6.069 min Scan# 1564  
 Delta R.T. -0.103 min  
 Lab File: VV024031.D  
 Acq: 16 Dec 2021 23:18

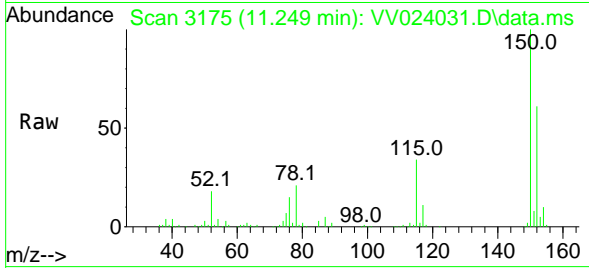
Tgt Ion: 63 Resp: 3528  
 Ion Ratio Lower Upper  
 63 100  
 112 0.0 4.3 6.5#



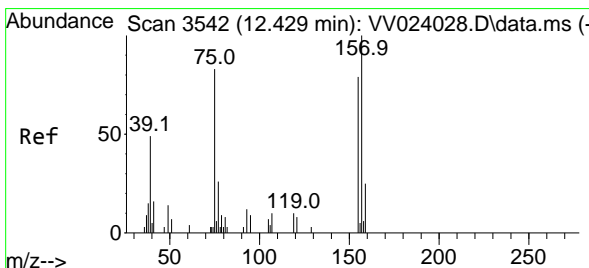
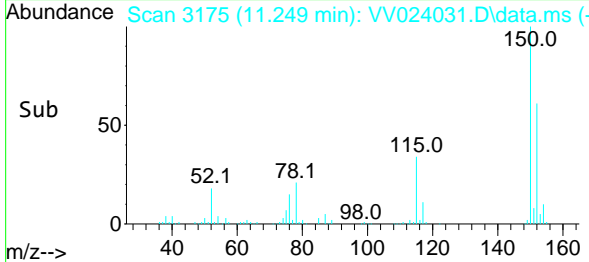
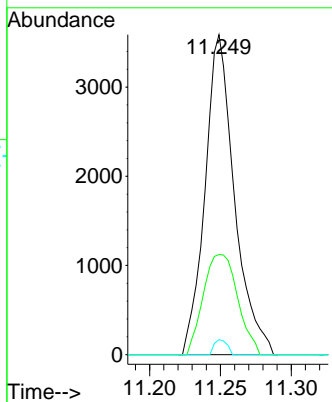


#61  
 1,2,3-Trichloropropane  
 Concen: 1.559 ug/L  
 RT: 11.249 min Scan# 3175  
 Delta R.T. 0.977 min  
 Lab File: VV024031.D  
 Acq: 16 Dec 2021 23:18

Instrument : MSVOA\_V  
 ClientSampleId :



Tgt Ion: 75 Resp: 5188  
 Ion Ratio Lower Upper  
 75 100  
 77 36.5 26.4 39.6  
 110 2.0 34.2 51.2#



#68  
 1,2-Dibromo-3-chloropropane  
 Concen: 0.099 ug/L  
 RT: 12.252 min Scan# 3487  
 Delta R.T. -0.177 min  
 Lab File: VV024031.D  
 Acq: 16 Dec 2021 23:18

Tgt Ion: 75 Resp: 72  
 Ion Ratio Lower Upper  
 75 100  
 155 0.0 71.7 107.5#  
 157 0.0 103.3 154.9#

