

Data Path : Z:\voasrv\HPCHEM1\MSVOA\_V\Data\VW121622\  
 Data File : VW029702.D  
 Acq On : 16 Dec 2022 16:58  
 Operator : SY/MD  
 Sample : N6034-15  
 Misc : 25.0mL/MSVOA\_V/WATER  
 ALS Vial : 12 Sample Multiplier: 1

Instrument :  
 MSVOA\_V  
 ClientSampleId :  
 BGPL4

Integration Parameters: rteint.p  
 Integrator: RTE  
 Smoothing : ON  
 Sampling : 1  
 Start Thrs : 0.1  
 Stop Thrs : 0  
 Filtering: 5  
 Min Area: 3 % of largest Peak  
 Max Peaks: 100  
 Peak Location: TOP

If leading or trailing edge < 100 prefer < Baseline drop else tangent >  
 Peak separation: 5

Method : Z:\voasrv\HPCHEM1\MSVOA\_V\Method\SFAMVTR112322WMA.M  
 Title : TRACE VOA SFAM1.0

Signal : TIC: VW029702.D\data.ms

peak #	R.T. min	first scan	max scan	last scan	PK TY	peak height	corr. area	corr. % max.	% of total
1	1.304	75	82	94	rVB	74654	74839	11.73%	1.300%
2	1.565	155	163	175	rVB	72259	82538	12.94%	1.434%
3	2.105	320	331	343	rBV	130571	187432	29.39%	3.255%
4	2.185	346	356	383	rVB3	15842	52336	8.21%	0.909%
5	2.503	447	455	466	rVB2	6732	11448	1.79%	0.199%
6	3.899	879	889	943	rBV	56269	244694	38.36%	4.250%
7	4.339	1009	1026	1054	rBV2	104975	273172	42.83%	4.745%
8	5.040	1228	1244	1283	rBV2	234692	604321	94.75%	10.496%
9	5.609	1408	1421	1447	rBV	253308	525222	82.35%	9.122%
10	6.063	1545	1562	1588	rBV	138008	290170	45.49%	5.040%
11	6.982	1836	1848	1870	rBV	58867	113135	17.74%	1.965%
12	7.310	1936	1950	1969	rBV	271819	490213	76.86%	8.514%
13	7.616	2036	2045	2068	rBV2	35508	65181	10.22%	1.132%
14	7.934	2130	2144	2164	rVB	17549	34452	5.40%	0.598%
15	8.088	2181	2192	2231	rBV	311105	617203	96.77%	10.720%
16	8.243	2232	2240	2256	rVB7	6487	14193	2.23%	0.247%
17	8.844	2412	2427	2455	rBV	374793	626191	98.18%	10.876%
18	9.561	2633	2650	2660	rVB9	2817	6709	1.05%	0.117%
19	10.166	2827	2838	2842	rBV3	7009	10777	1.69%	0.187%
20	10.207	2842	2851	2868	rVB	112926	179327	28.12%	3.115%
21	10.375	2891	2903	2920	rVB	39303	65366	10.25%	1.135%
22	11.239	3160	3172	3193	rBV	409035	637807	100.00%	11.078%
23	11.548	3253	3268	3277	rBV3	10403	19213	3.01%	0.334%
24	11.612	3277	3288	3308	rVB	303587	481116	75.43%	8.356%
25	12.239	3472	3483	3494	rBV	15820	26065	4.09%	0.453%
26	12.336	3505	3513	3521	rVB4	5616	7001	1.10%	0.122%
27	12.661	3608	3614	3623	rVB5	5832	8495	1.33%	0.148%
28	14.027	4031	4039	4049	rBV2	5880	8870	1.39%	0.154%

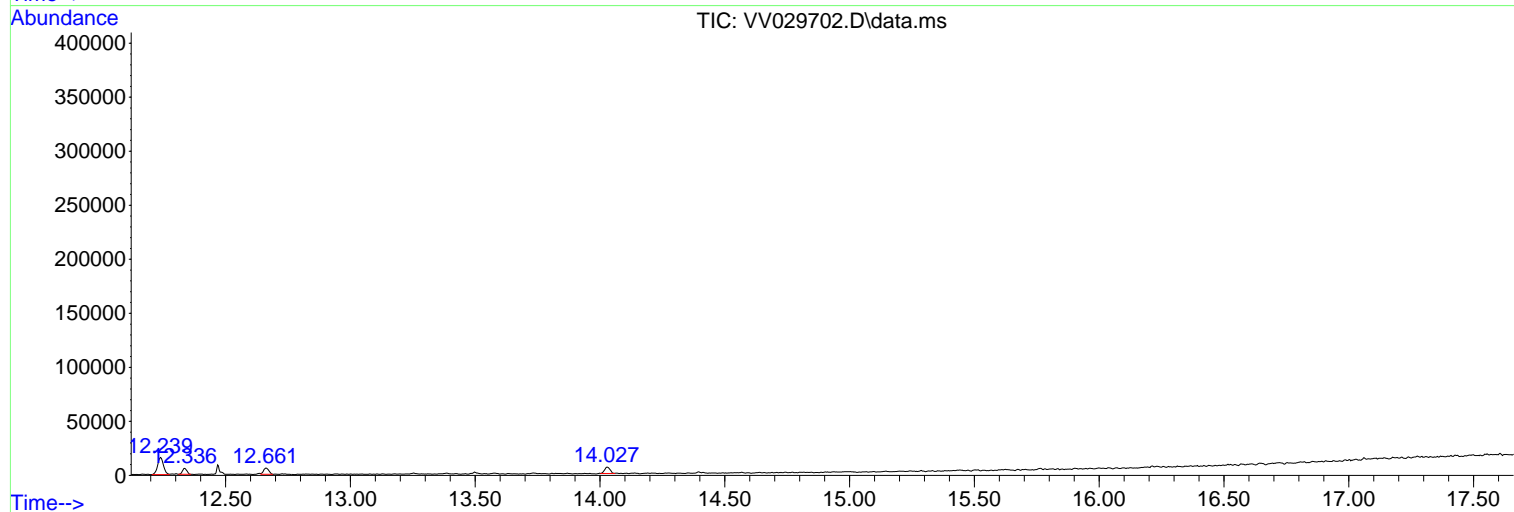
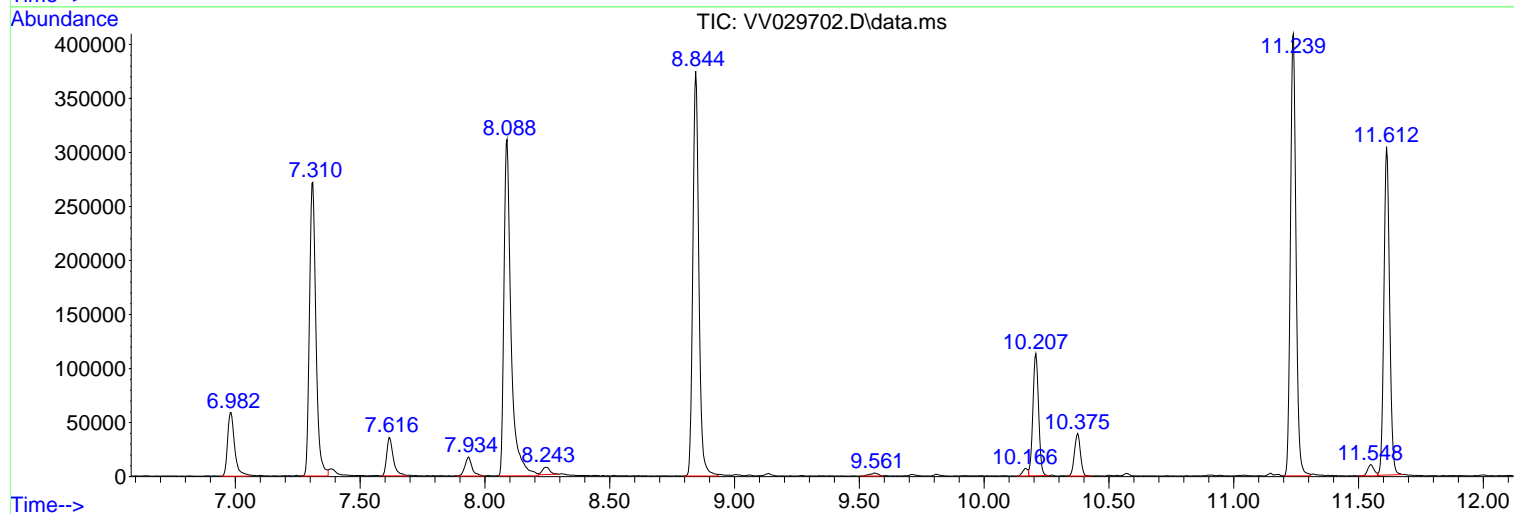
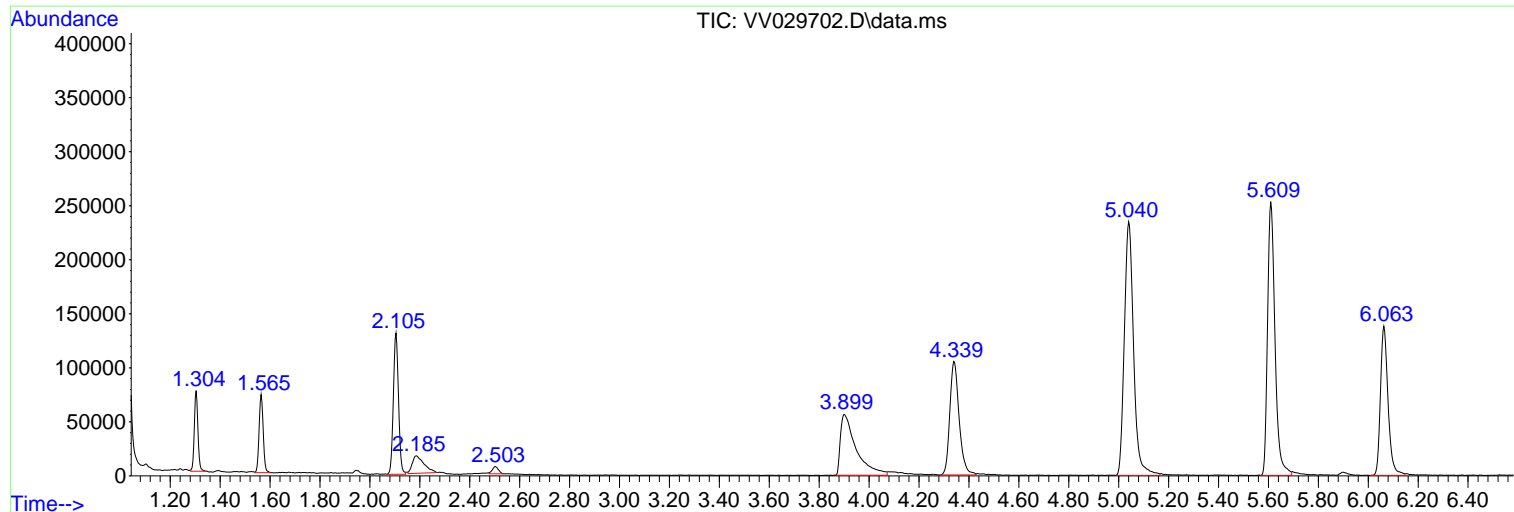
Sum of corrected areas: 5757486

Data Path : Z:\voasrv\HPCHEM1\MSVOA\_V\Data\VV121622\  
Data File : VV029702.D  
Acq On : 16 Dec 2022 16:58  
Operator : SY/MD  
Sample : N6034-15  
Misc : 25.0mL/MSVOA\_V/WATER  
ALS Vial : 12 Sample Multiplier: 1

Instrument :  
MSVOA\_V  
ClientSampleId :  
BGPL4

Quant Method : Z:\voasrv\HPCHEM1\MSVOA\_V\Method\SFAMVTR112322WMA.M  
Quant Title : TRACE VOA SFAM1.0

TIC Library : C:\Database\NIST20.L  
TIC Integration Parameters: LSCINT.P



Library Search Compound Report

Data Path : Z:\voasrv\HPCHEM1\MSVOA\_V\Data\VV121622\  
Data File : VV029702.D  
Acq On : 16 Dec 2022 16:58  
Operator : SY/MD  
Sample : N6034-15  
Misc : 25.0mL/MSVOA\_V/WATER  
ALS Vial : 12 Sample Multiplier: 1

Instrument :  
MSVOA\_V  
ClientSampleId :  
BGPL4

Quant Method : Z:\voasrv\HPCHEM1\MSVOA\_V\Method\SFAMVTR112322WMA.M  
Quant Title : TRACE VOA SFAM1.0

TIC Library : C:\Database\NIST20.L  
TIC Integration Parameters: LSCINT.P

No Library Search Compounds Detected

\*\*\*\*\*

Data Path : Z:\voasrv\HPCHEM1\MSVOA\_V\Data\VW121622\  
Data File : VV029702.D  
Acq On : 16 Dec 2022 16:58  
Operator : SY/MD  
Sample : N6034-15  
Misc : 25.0mL/MSVOA\_V/WATER  
ALS Vial : 12 Sample Multiplier: 1

Instrument :  
MSVOA\_V  
ClientSampleId :  
BGPL4

Quant Method : Z:\voasrv\HPCHEM1\MSVOA\_V\Method\SFAMVTR112322WMA.M  
Quant Title : TRACE VOA SFAM1.0

TIC Library : C:\Database\NIST0.L  
TIC Integration Parameters: LSCINT.P

TIC Top Hit name	RT	EstConc	Units	Response	--Internal Standard--		
					#	RT	Resp Conc

---