

Data Path : Z:\VOASRV\HPCHEM1\MSVOA V\DATA\VV121818\
 Data File : VV009021.D
 Acq On : 18 Dec 2018 18:28
 Operator : SY/MD
 Sample : J6418-10
 Misc : 4.18G/10ML/MSVOA V/SOIL
 ALS Vial : 1 Sample Multiplier: 1

Instrument :
 MSVOA_V
ClientSampled :
 BF005

Manual Integrations
APPROVED
 MMDadoda
 12/19/2018 3:14:34 PM

Quant Time: Dec 19 07:03:33 2018
 Quant Method : Z:\VOASRV\HPCHEM1\MSVOA_V\METHOD\SOM2VLM120618S.M
 Quant Title : VOC Analysis
 QLast Update : Wed Dec 19 06:18:48 2018
 Response via : Initial Calibration

Internal Standards	R.T.	QIon	Response	Conc	Units	Dev(Min)
1) 1,4-Difluorobenzene	5.67	114	264066	25.00	ug/L	0.00
28) Chlorobenzene-d5	8.90	117	226366	25.00	ug/L	0.00
60) 1,4-Dichlorobenzene-d4	11.30	152	76682	25.00	ug/L	0.00

System Monitoring Compounds

4) Vinyl Chloride-d3	1.31	65	70566	25.82	ug/L	0.00
Spiked Amount	25.000	Range	30 - 150	Recovery	=	103.28%
7) Chloroethane-d5	1.58	69	69821	34.59	ug/L	0.00
Spiked Amount	25.000	Range	30 - 150	Recovery	=	138.36%
10) 1,1-Dichloroethene-d2	2.13	63	150557	22.04	ug/L	0.00
Spiked Amount	25.000	Range	45 - 110	Recovery	=	88.16%
20) 2-Butanone-d5	3.94	46	37545m	37.74	ug/L	0.00
Spiked Amount	50.000	Range	20 - 135	Recovery	=	75.48%
24) Chloroform-d	4.40	84	170567	26.87	ug/L	0.00
Spiked Amount	25.000	Range	40 - 150	Recovery	=	107.48%
26) 1,2-Dichloroethane-d4	5.08	65	97248	28.07	ug/L	0.00
Spiked Amount	25.000	Range	70 - 130	Recovery	=	112.28%
29) Benzene-d6	5.10	84	344867	27.28	ug/L	0.00
Spiked Amount	25.000	Range	20 - 135	Recovery	=	109.12%
33) 1,2-Dichloropropane-d6	6.12	67	102217	28.88	ug/L	0.00
Spiked Amount	25.000	Range	70 - 120	Recovery	=	115.52%
37) Toluene-d8	7.36	98	306577	26.20	ug/L	0.00
Spiked Amount	25.000	Range	30 - 130	Recovery	=	104.80%
38) trans-1,3-Dichloropropene-	7.66	79	38952	25.05	ug/L	0.00
Spiked Amount	25.000	Range	30 - 135	Recovery	=	100.20%
39) 2-Hexanone-d5	8.14	63	20149	31.07	ug/L	0.00
Spiked Amount	50.000	Range	20 - 135	Recovery	=	62.14%
48) 1,1,2,2-Tetrachloroethane-	10.26	84	65112	21.93	ug/L	0.00
Spiked Amount	25.000	Range	45 - 120	Recovery	=	87.72%
61) 1,2-Dichlorobenzene-d4	11.68	152	75510	26.24	ug/L	0.00
Spiked Amount	25.000	Range	75 - 120	Recovery	=	104.96%

Target Compounds					Ovalue
13) Acetone	2.20	43	4020	2.743 ug/L	93

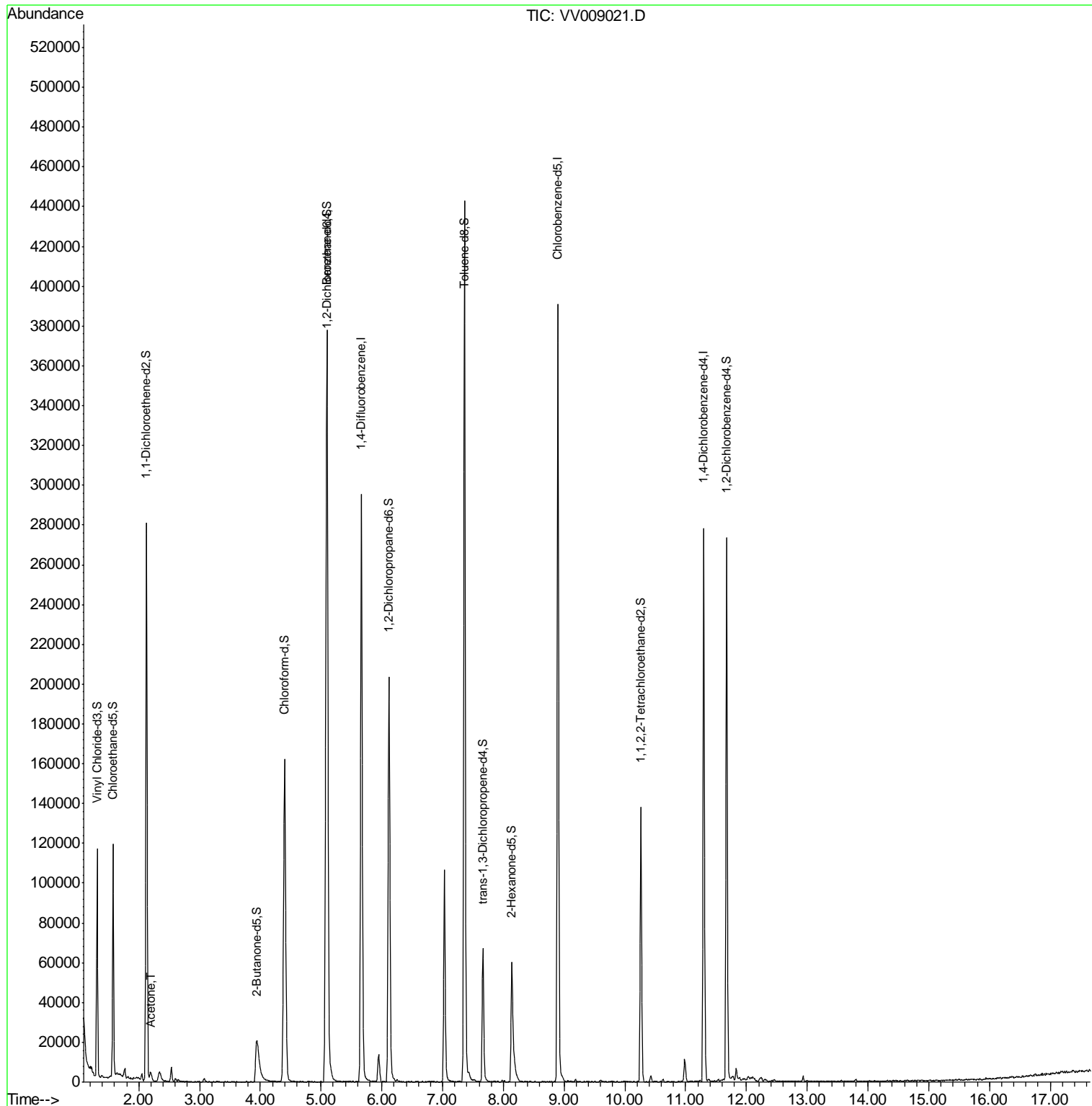
(#) = qualifier out of range (m) = manual integration (+) = signals summed

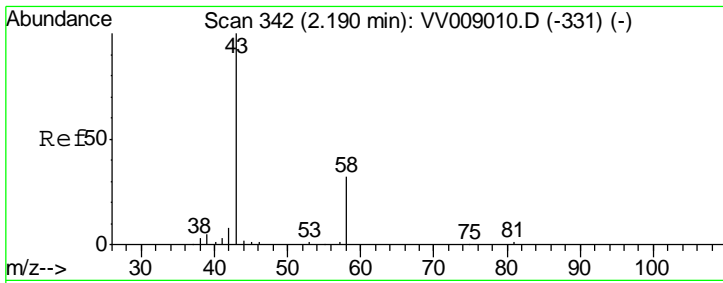
Data Path : Z:\VOASRV\HPCHEM1\MSVOA V\DATA\VV121818\
 Data File : VV009021.D
 Acq On : 18 Dec 2018 18:28
 Operator : SY/MD
 Sample : J6418-10
 Misc : 4.18G/10ML/MSVOA V/SOIL
 ALS Vial : 1 Sample Multiplier: 1

Instrument :
 MSVOA_V
 ClientSampled :
 BF005

Manual Integrations
 APPROVED
 MMDadoda
 12/19/2018 3:14:34 PM

Quant Time: Dec 19 07:03:33 2018
 Quant Method : Z:\VOASRV\HPCHEM1\MSVOA_V\METHOD\SOM2VLM120618S.M
 Quant Title : VOC Analysis
 QLast Update : Wed Dec 19 06:18:48 2018
 Response via : Initial Calibration





#13
 Acetone
 Concen: 2.743 ug/L
 RT: 2.20 min Scan# 345
 Delta R.T. 0.01 min
 Lab File: VV009021.D
 Acq: 18 Dec 2018 18:28

Instrument :
 MSVOA_V
ClientSampled :
 BF005

Tot Ion: 43 Resp: 4020

Ion	Ratio	Lower	Upper
43	100		
58	28.6	0.0	65.4

Manual Integrations
APPROVED
 MMDadoda
 12/19/2018 3:14:34 PM

