

Data Path : Z:\VOASRV\HPCHEM1\MSVOA V\DATA\VV121820\
 Data File : VV019708.D
 Acq On : 18 Dec 2020 18:32
 Operator : SY/MD
 Sample : L5098-08
 Misc : 5.0mL/MSVOA V/WATER
 ALS Vial : 1 Sample Multiplier: 1

Instrument :
 MSVOA_V
 ClientSampleId :
 BG4Q4

Quant Time: Dec 19 05:29:13 2020
 Quant Method : Z:\VOASRV\HPCHEM1\MSVOA_V\METHOD\SOMVLM121020WMA.M
 Quant Title : VOC Analysis
 QLast Update : Sat Dec 19 05:26:51 2020
 Response via : Initial Calibration

Internal Standards	R.T.	QIon	Response	Conc	Units	Dev(Min)
1) 1,4-Difluorobenzene	5.62	114	577562	50.00	ug/L	0.00
28) Chlorobenzene-d5	8.86	117	538323	50.00	ug/L	0.00
60) 1,4-Dichlorobenzene-d4	11.25	152	247046	50.00	ug/L	0.00

System Monitoring Compounds

4) Vinyl Chloride-d3	1.31	65	179883	43.43	ug/L	0.00
Spiked Amount	50.000	Range	60 - 135	Recovery	=	86.86%
7) Chloroethane-d5	1.57	69	151833	46.48	ug/L	0.00
Spiked Amount	50.000	Range	70 - 130	Recovery	=	92.96%
11) 1,1-Dichloroethene-d2	2.11	63	268154	34.89	ug/L	0.00
Spiked Amount	50.000	Range	60 - 125	Recovery	=	69.78%
21) 2-Butanone-d5	3.89	46	276086	122.65	ug/L	0.00
Spiked Amount	100.000	Range	40 - 130	Recovery	=	122.65%
24) Chloroform-d	4.35	84	356829	47.81	ug/L	0.00
Spiked Amount	50.000	Range	70 - 125	Recovery	=	95.62%
26) 1,2-Dichloroethane-d4	5.04	65	245656	50.36	ug/L	0.00
Spiked Amount	50.000	Range	70 - 125	Recovery	=	100.72%
32) Benzene-d6	5.05	84	704597	49.08	ug/L	0.00
Spiked Amount	50.000	Range	70 - 125	Recovery	=	98.16%
36) 1,2-Dichloropropane-d6	6.07	67	229322	50.99	ug/L	0.00
Spiked Amount	50.000	Range	70 - 120	Recovery	=	101.98%
41) Toluene-d8	7.32	98	619618	47.93	ug/L	0.00
Spiked Amount	50.000	Range	80 - 120	Recovery	=	95.86%
43) trans-1,3-Dichloropropene-	7.62	79	109092	42.64	ug/L	0.00
Spiked Amount	50.000	Range	60 - 125	Recovery	=	85.28%
47) 2-Hexanone-d5	8.09	63	192324	108.96	ug/L	0.00
Spiked Amount	100.000	Range	45 - 130	Recovery	=	108.96%
57) 1,1,2,2-Tetrachloroethane-	10.22	84	286956	47.17	ug/L	0.00
Spiked Amount	50.000	Range	65 - 120	Recovery	=	94.34%
64) 1,2-Dichlorobenzene-d4	11.63	152	231851	50.21	ug/L	0.00
Spiked Amount	50.000	Range	80 - 120	Recovery	=	100.42%

Target Compounds

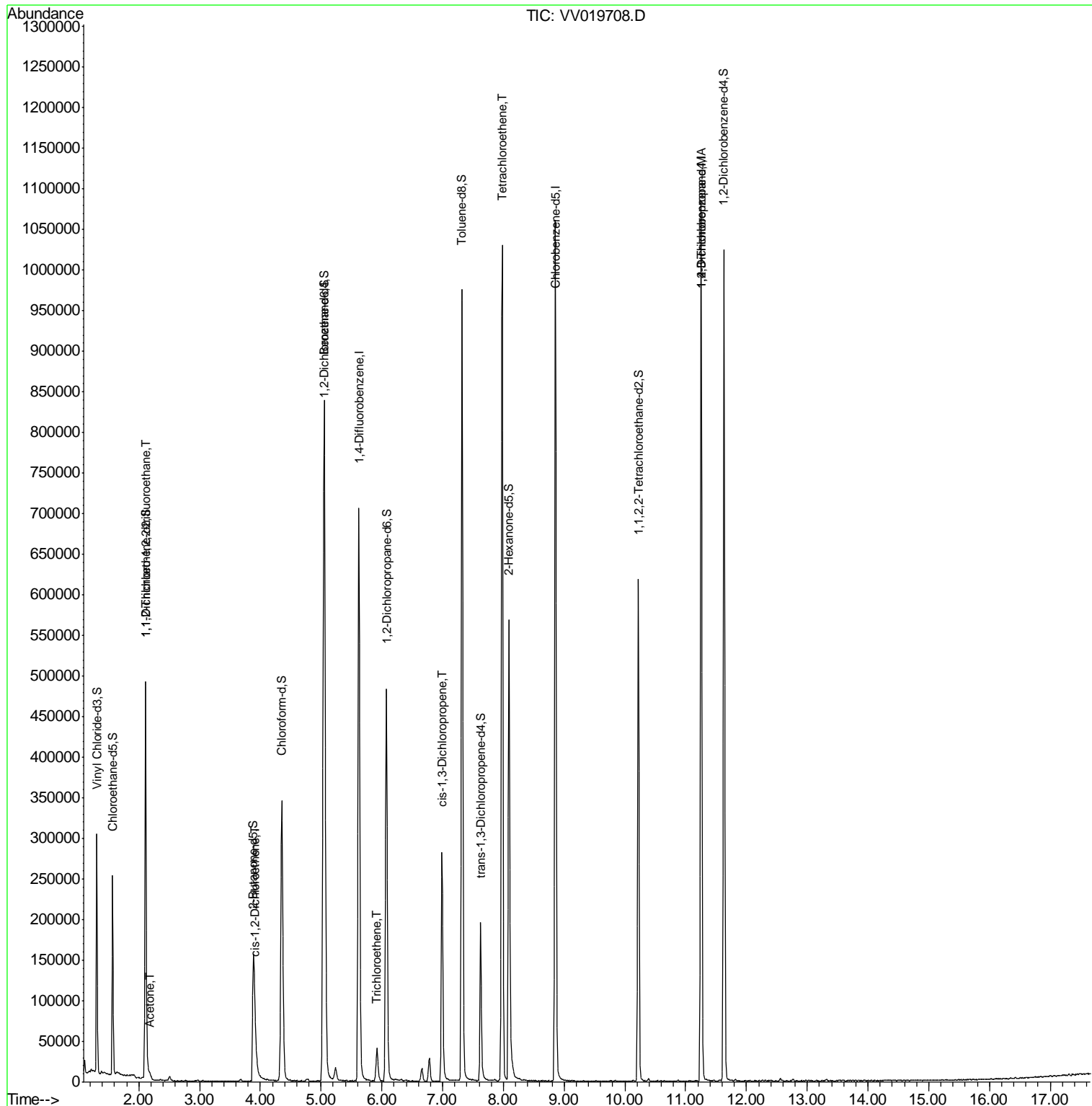
Target Compounds	R.T.	QIon	Response	Conc	Units	Ovalue
10) 1,1,2-Trichloro-1,2,2-trif	2.11	101	2467	0.736	ug/L #	22
13) Acetone	2.18	43	8007	4.175	ug/L	98
20) cis-1,2-Dichloroethene	3.92	96	7745	1.868	ug/L #	90
34) Trichloroethene	5.92	95	11285	2.715	ug/L	92
39) cis-1,3-Dichloropropene	6.99	75	6868	1.006	ug/L #	61
46) Tetrachloroethene	7.98	164	209046	72.692	ug/L	99
59) 1,2,3-Trichloropropane	11.25	75	34502	6.751	ug/L	90

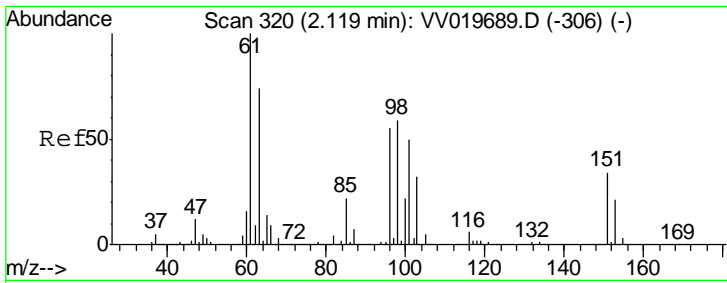
(#) = qualifier out of range (m) = manual integration (+) = signals summed

Data Path : Z:\VOASRV\HPCHEM1\MSVOA V\DATA\VV121820\
 Data File : VV019708.D
 Acq On : 18 Dec 2020 18:32
 Operator : SY/MD
 Sample : L5098-08
 Misc : 5.0mL/MSVOA V/WATER
 ALS Vial : 1 Sample Multiplier: 1

Instrument :
 MSVOA_V
 Client Sampled :
 BG4Q4

Quant Time: Dec 19 05:29:13 2020
 Quant Method : Z:\VOASRV\HPCHEM1\MSVOA_V\METHOD\SOMVLM121020WMA.M
 Quant Title : VOC Analysis
 QLast Update : Sat Dec 19 05:26:51 2020
 Response via : Initial Calibration

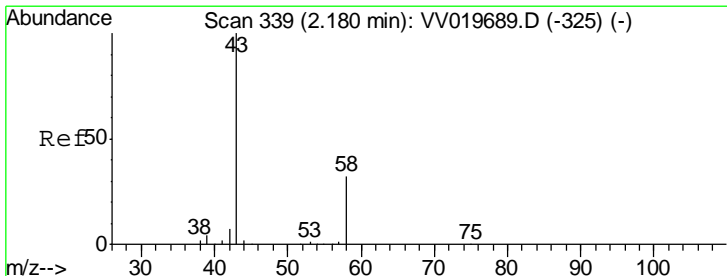
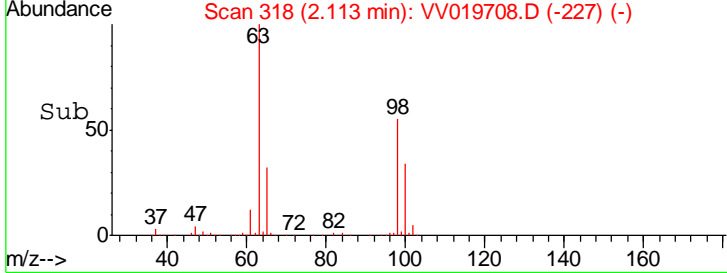
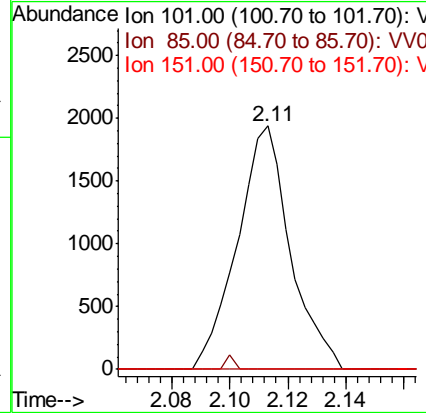
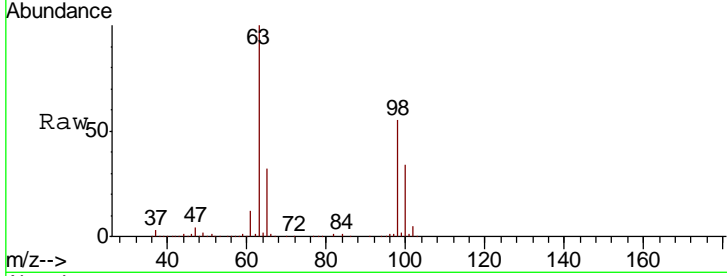




#10
 1,1,2-Trichloro-1,2,2-trifluoroethane
 Concen: 0.736 ug/L
 RT: 2.11 min Scan# 318
 Delta R.T. -0.01 min
 Lab File: VV019708.D
 Acq: 18 Dec 2020 18:32

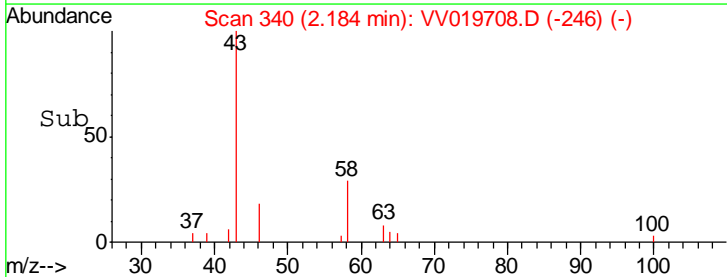
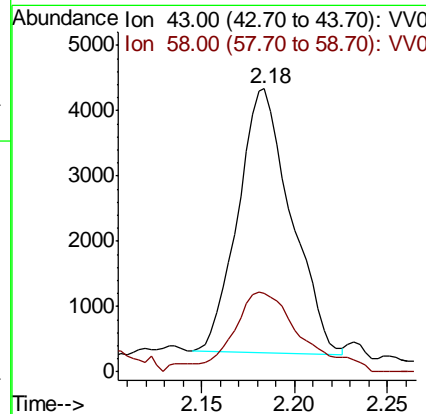
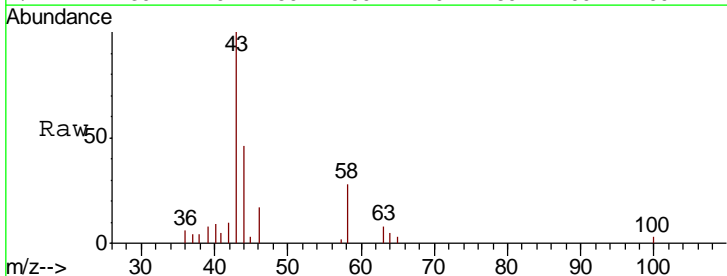
Instrument :
 MSVOA_V
 ClientSampled :
 BG4Q4

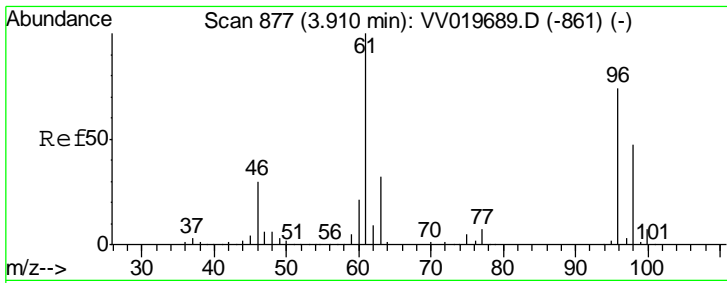
Tgt Ion	Resp	Lower	Upper
101	2467		
101	100		
85	0.0	35.0	52.4#
151	0.0	55.8	83.8#



#13
 Acetone
 Concen: 4.175 ug/L
 RT: 2.18 min Scan# 340
 Delta R.T. 0.00 min
 Lab File: VV019708.D
 Acq: 18 Dec 2020 18:32

Tgt Ion	Resp	Lower	Upper
43	8007		
43	100		
58	29.4	0.0	61.6

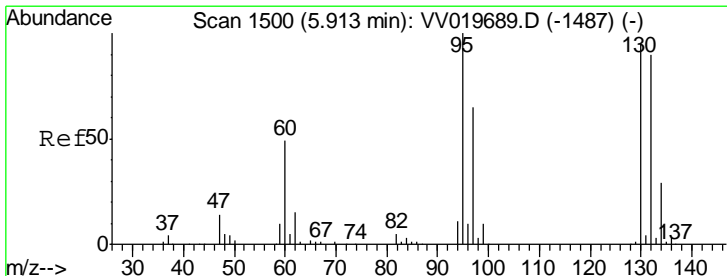
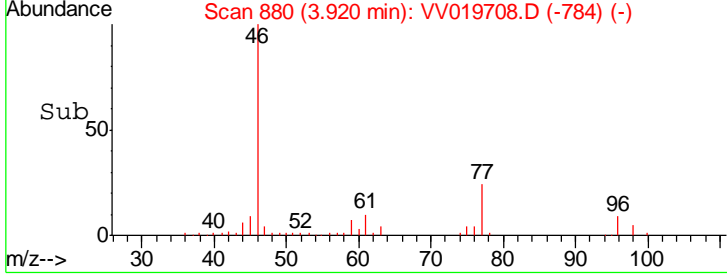
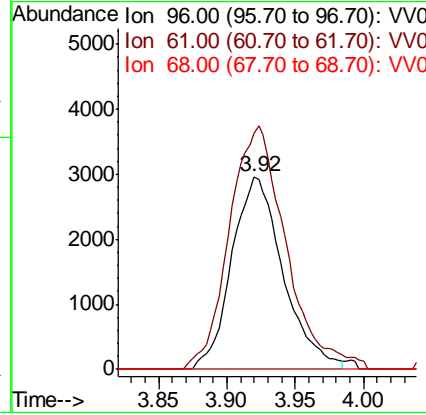
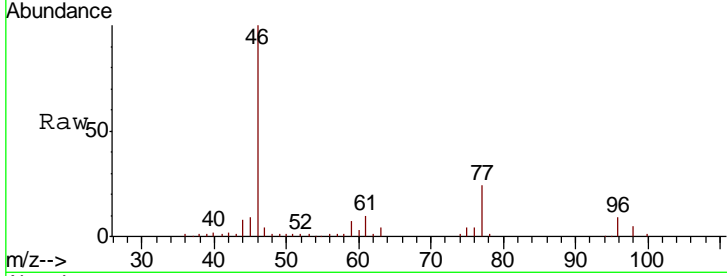




#20
 cis-1,2-Dichloroethene
 Concen: 1.868 ug/L
 RT: 3.92 min Scan# 880
 Delta R.T. 0.01 min
 Lab File: VV019708.D
 Acq: 18 Dec 2020 18:32

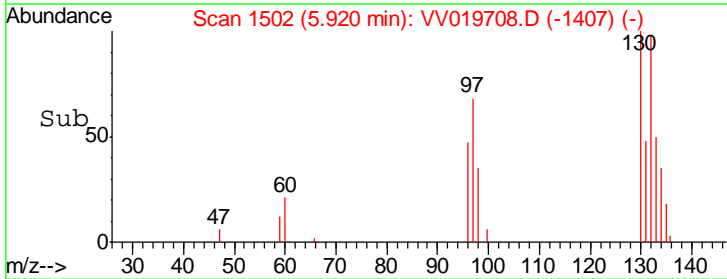
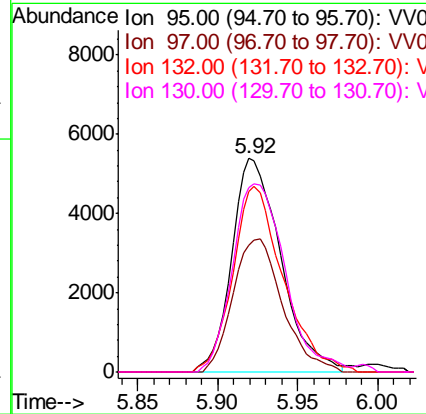
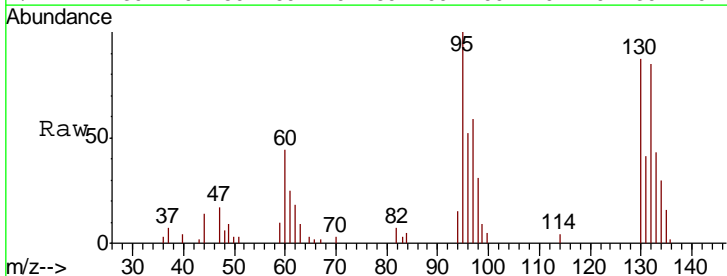
Instrument : MSVOA_V
 ClientSampled : BG4Q4

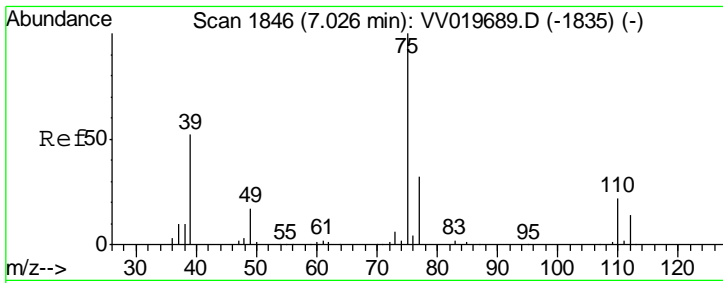
Tgt Ion	Resp	Lower	Upper
96	7745		
96	100		
61	122.3	94.1	174.8
68	0.0	0.1	0.1#



#34
 Trichloroethene
 Concen: 2.715 ug/L
 RT: 5.92 min Scan# 1502
 Delta R.T. 0.01 min
 Lab File: VV019708.D
 Acq: 18 Dec 2020 18:32

Tgt Ion	Resp	Lower	Upper
95	11285		
95	100		
97	59.2	44.4	82.4
132	84.7	64.3	119.3
130	86.6	67.8	125.8

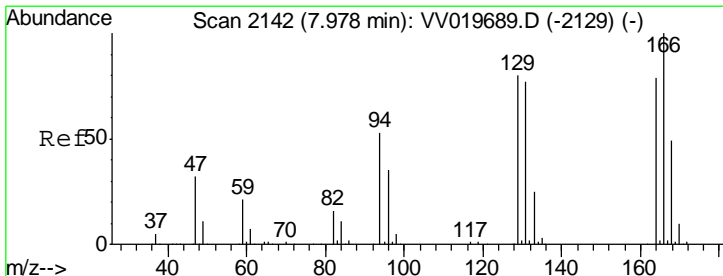
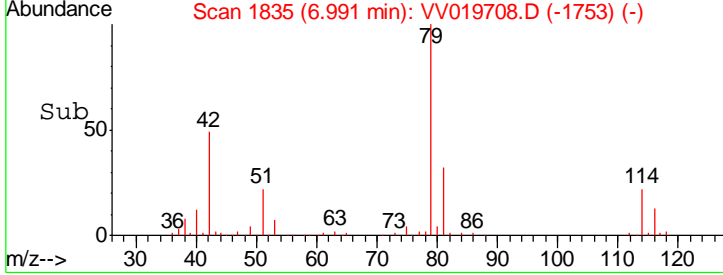
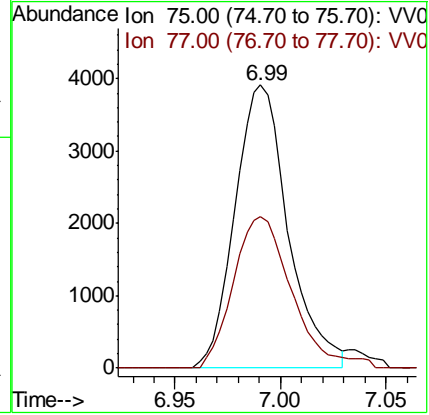
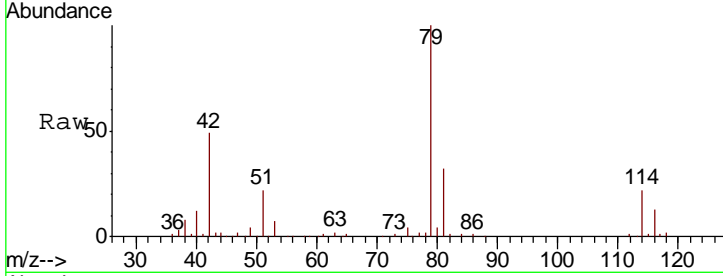




#39
 cis-1,3-Dichloropropene
 Concen: 1.006 ug/L
 RT: 6.99 min Scan# 1835
 Delta R.T. -0.04 min
 Lab File: VV019708.D
 Acq: 18 Dec 2020 18:32

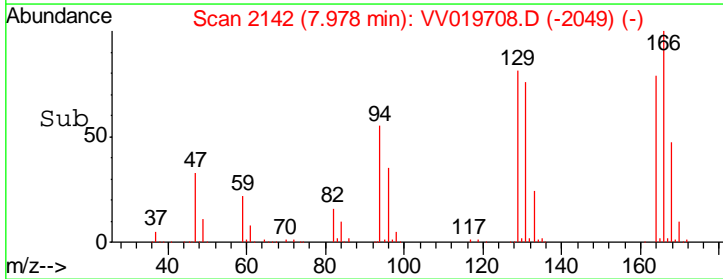
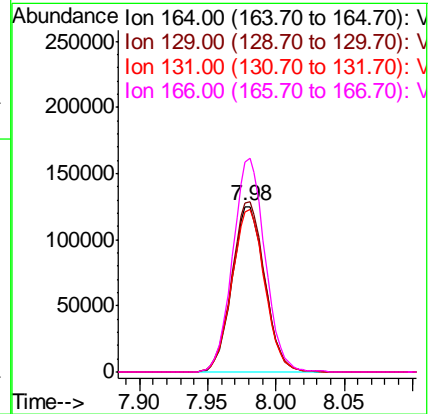
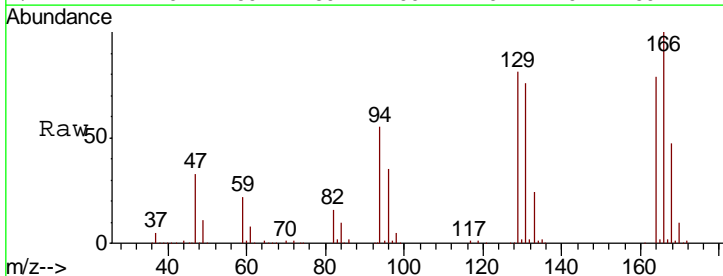
Instrument :
 MSVOA_V
 ClientSampled :
 BG4Q4

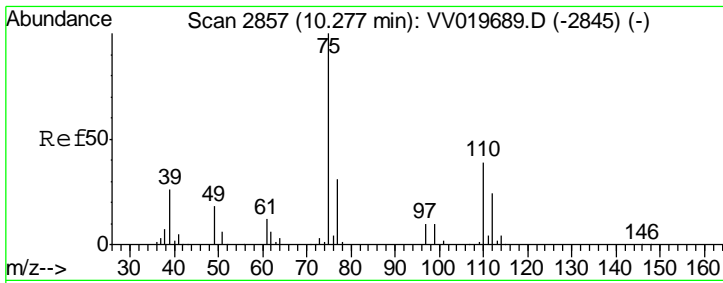
Tgt Ion	Resp	Lower	Upper
75	6868		
77	53.7	22.4	41.6#



#46
 Tetrachloroethene
 Concen: 72.692 ug/L
 RT: 7.98 min Scan# 2142
 Delta R.T. 0.00 min
 Lab File: VV019708.D
 Acq: 18 Dec 2020 18:32

Tgt Ion	Resp	Lower	Upper
164	209046		
166	126.7	86.9	161.5
129	102.3	70.6	131.0
131	96.9	68.0	126.4





#59
 1,2,3-Trichloropropane
 Concen: 6.751 ug/L
 RT: 11.25 min Scan# 3161
 Delta R.T. 0.98 min
 Lab File: VV019708.D
 Acq: 18 Dec 2020 18:32

Instrument :
 MSVOA_V
 ClientSampled :
 BG4Q4

Tot Ion	Resp	Lower	Upper
75	34502		
75	100		
77	37.9	25.8	38.8

