

Data Path : Z:\VOASRV\HPCHEM1\MSVOA V\DATA\VV121820\
 Data File : VV019722.D
 Acq On : 19 Dec 2020 02:30
 Operator : SY/MD
 Sample : L5131-11 40X
 Misc : 5.0mL/MSVOA V/WATER
 ALS Vial : 1 Sample Multiplier: 1

Instrument :
 MSVOA_V
 ClientSampleId :
 F4H10

Quant Time: Dec 19 08:27:09 2020
 Quant Method : Z:\VOASRV\HPCHEM1\MSVOA_V\METHOD\SOMVLM121020WMA.M
 Quant Title : VOC Analysis
 QLast Update : Sat Dec 19 07:00:18 2020
 Response via : Initial Calibration

Internal Standards	R.T.	QIon	Response	Conc	Units	Dev(Min)
1) 1,4-Difluorobenzene	5.62	114	527919	50.00	ug/L	0.00
28) Chlorobenzene-d5	8.86	117	490678	50.00	ug/L	0.00
60) 1,4-Dichlorobenzene-d4	11.25	152	220120	50.00	ug/L	0.00

System Monitoring Compounds

4) Vinyl Chloride-d3	1.31	65	154411	40.79	ug/L	0.00
Spiked Amount	50.000	Range	60 - 135	Recovery	=	81.58%
7) Chloroethane-d5	1.57	69	142895	47.86	ug/L	0.00
Spiked Amount	50.000	Range	70 - 130	Recovery	=	95.72%
11) 1,1-Dichloroethene-d2	2.11	63	235489	33.52	ug/L	0.00
Spiked Amount	50.000	Range	60 - 125	Recovery	=	67.04%
21) 2-Butanone-d5	3.89	46	314815	153.00	ug/L	0.00
Spiked Amount	100.000	Range	40 - 130	Recovery	=	153.00%#
24) Chloroform-d	4.35	84	342506	50.20	ug/L	0.00
Spiked Amount	50.000	Range	70 - 125	Recovery	=	100.40%
26) 1,2-Dichloroethane-d4	5.04	65	246574	55.30	ug/L	0.00
Spiked Amount	50.000	Range	70 - 125	Recovery	=	110.60%
32) Benzene-d6	5.05	84	659318	50.38	ug/L	0.00
Spiked Amount	50.000	Range	70 - 125	Recovery	=	100.76%
36) 1,2-Dichloropropane-d6	6.07	67	222334	54.23	ug/L	0.00
Spiked Amount	50.000	Range	70 - 120	Recovery	=	108.46%
41) Toluene-d8	7.32	98	558785	47.42	ug/L	0.00
Spiked Amount	50.000	Range	80 - 120	Recovery	=	94.84%
43) trans-1,3-Dichloropropene-	7.62	79	103002	44.17	ug/L	0.00
Spiked Amount	50.000	Range	60 - 125	Recovery	=	88.34%
47) 2-Hexanone-d5	8.09	63	209385	130.14	ug/L	0.00
Spiked Amount	100.000	Range	45 - 130	Recovery	=	130.14%#
57) 1,1,2,2-Tetrachloroethane-	10.22	84	296080	53.40	ug/L	0.00
Spiked Amount	50.000	Range	65 - 120	Recovery	=	106.80%
64) 1,2-Dichlorobenzene-d4	11.63	152	212087	51.54	ug/L	0.00
Spiked Amount	50.000	Range	80 - 120	Recovery	=	103.08%

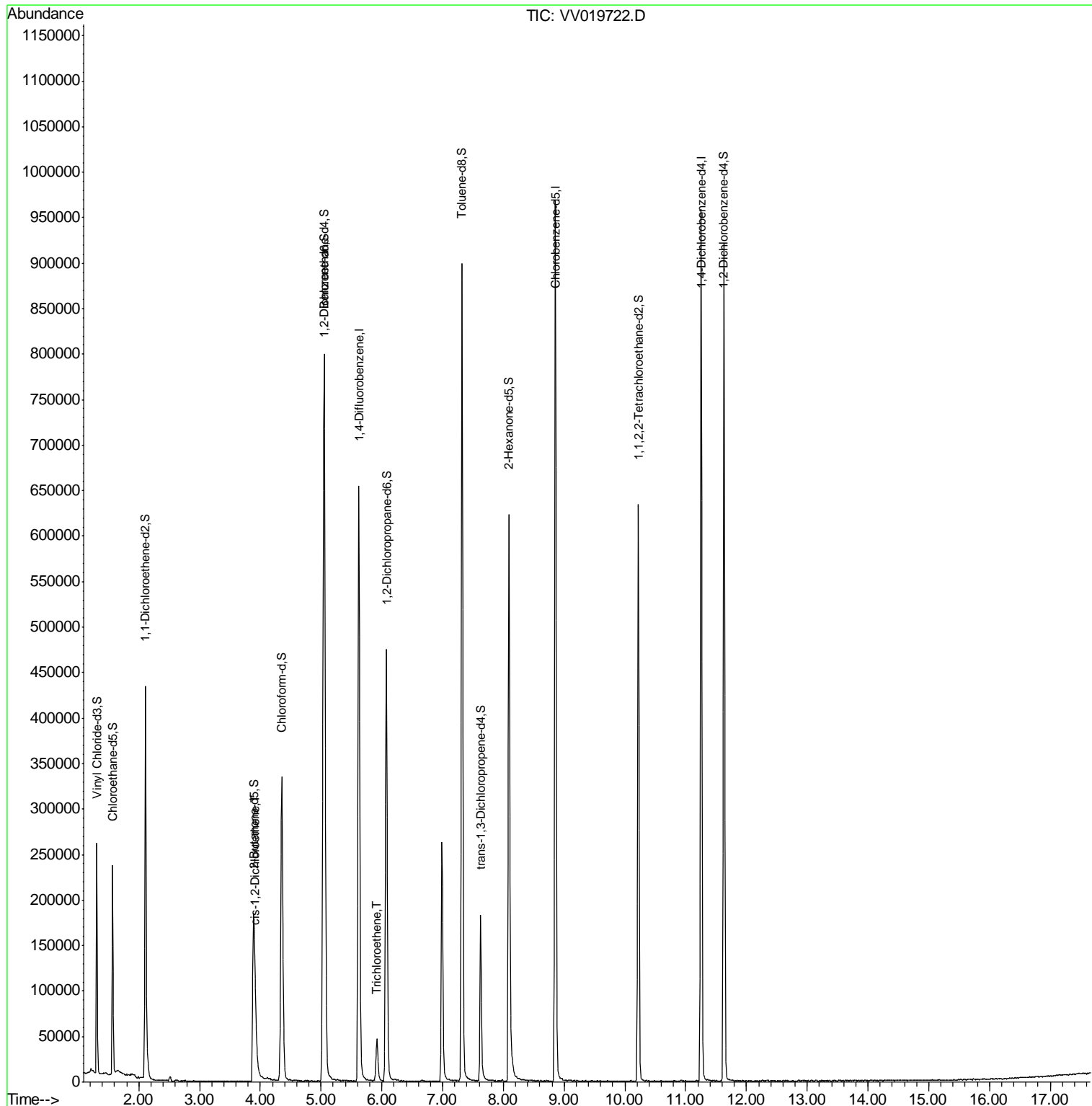
Target Compounds					Ovalue
20) cis-1,2-Dichloroethene	3.92	96	16533	4.363 ug/L #	92
34) Trichloroethene	5.92	95	13231	3.493 ug/L	97

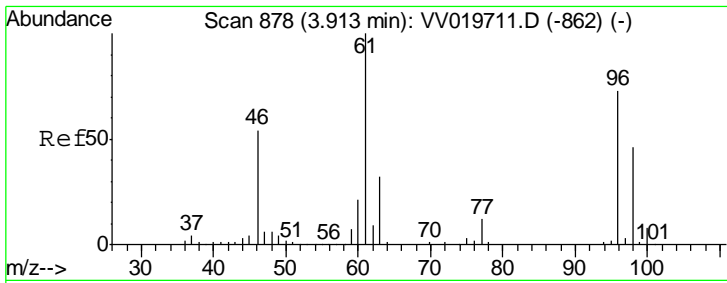
(#) = qualifier out of range (m) = manual integration (+) = signals summed

Data Path : Z:\VOASRV\HPCHEM1\MSVOA V\DATA\VV121820\
 Data File : VV019722.D
 Acq On : 19 Dec 2020 02:30
 Operator : SY/MD
 Sample : L5131-11 40X
 Misc : 5.0mL/MSVOA V/WATER
 ALS Vial : 1 Sample Multiplier: 1

Instrument :
 MSVOA_V
 Client Sampled :
 F4H10

Quant Time: Dec 19 08:27:09 2020
 Quant Method : Z:\VOASRV\HPCHEM1\MSVOA_V\METHOD\SOMVLM121020WMA.M
 Quant Title : VOC Analysis
 QLast Update : Sat Dec 19 07:00:18 2020
 Response via : Initial Calibration

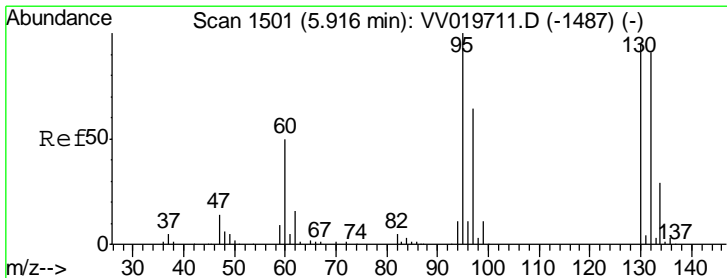
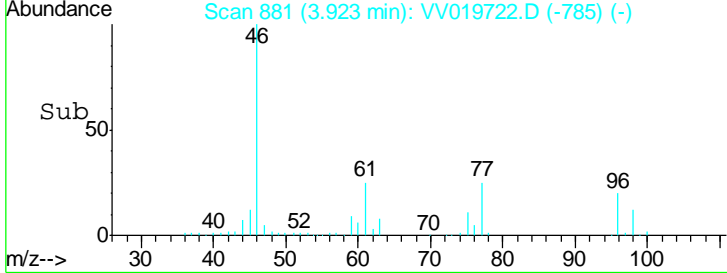
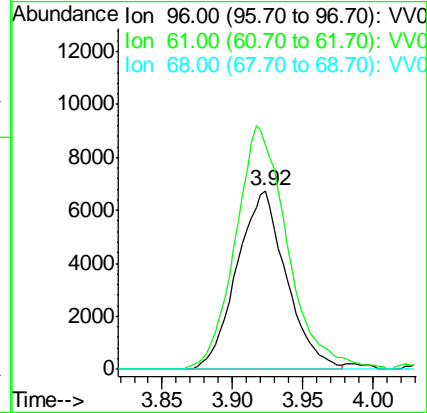
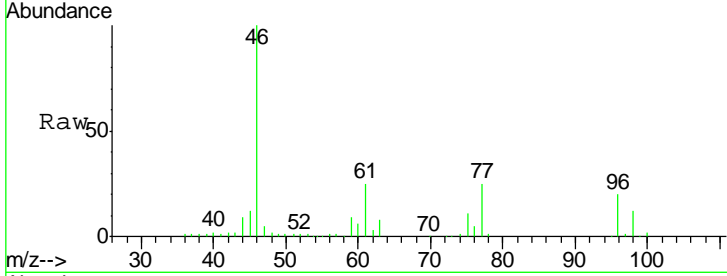




#20
 cis-1,2-Dichloroethene
 Concen: 4.363 ug/L
 RT: 3.92 min Scan# 881
 Delta R.T. 0.01 min
 Lab File: VV019722.D
 Acq: 19 Dec 2020 02:30

Instrument :
 MSVOA_V
 ClientSampled :
 F4H10

Tgt Ion	Resp	Lower	Upper
96	16533		
96	100		
61	125.4	94.1	174.8
68	0.0	0.1	0.1#



#34
 Trichloroethene
 Concen: 3.493 ug/L
 RT: 5.92 min Scan# 1503
 Delta R.T. 0.01 min
 Lab File: VV019722.D
 Acq: 19 Dec 2020 02:30

Tgt Ion	Resp	Lower	Upper
95	13231		
95	100		
97	64.7	44.4	82.4
132	90.0	64.3	119.3
130	92.5	67.8	125.8

