

Data Path : Z:\VOASRV\HPCHEM1\MSVOA_V\DATA\VV122018\
 Data File : VV009087.D
 Acq On : 20 Dec 2018 16:37
 Operator : SY/MD
 Sample : J6471-01RE
 Misc : 5.45 G/10ML/MSVOA_V/SOIL
 ALS Vial : 1 Sample Multiplier: 1

Instrument :
 MSVOA_V
 ClientSampleId :
 F9H10RE

Integration Parameters: LSCINT.P

Integrator: RTE
 Smoothing : OFF
 Sampling : 1
 Start Thrs: 0.2
 Stop Thrs : 0

Filtering: 5
 Min Area: 0 % of largest Peak
 Max Peaks: 100
 Peak Location: TOP

If leading or trailing edge < 100 prefer < Baseline drop else tangent >
 Peak separation: 5

Method : Z:\VOASRV\HPCHEM1\MSVOA_V\METHOD\SOM2VLM120618S.M
 Title : VOC Analysis

Signal : TIC

peak #	R.T. min	first scan	max scan	last scan	PK TY	peak height	corr. area	corr. % max.	% of total
1	1.315	64	70	84	rVB	61478	63718	11.80%	1.716%
2	1.579	145	152	164	rVB	67340	73947	13.69%	1.992%
3	2.129	311	323	335	rBV	141991	203207	37.63%	5.474%
4	2.537	440	450	461	rVB2	14038	22441	4.16%	0.605%
5	2.656	476	487	494	rBV3	1807	3840	0.71%	0.103%
6	2.791	526	529	530	rBV	395	172	0.03%	0.005%
7	2.904	560	564	566	rBV2	259	223	0.04%	0.006%
8	2.987	585	590	595	rBB	292	264	0.05%	0.007%
9	3.016	596	599	601	rBV	173	143	0.03%	0.004%
10	3.074	607	617	628	rBV2	3684	6946	1.29%	0.187%
11	3.216	657	661	663	rBV	170	181	0.03%	0.005%
12	3.302	684	688	691	rBV	198	182	0.03%	0.005%
13	3.409	717	721	723	rBB	267	184	0.03%	0.005%
14	3.434	724	729	731	rBV	159	152	0.03%	0.004%
15	3.531	754	759	763	rBB	299	252	0.05%	0.007%
16	3.952	874	890	892	rBV2	26872	51384	9.52%	1.384%
17	4.254	981	984	990	rBV2	269	328	0.06%	0.009%
18	4.399	1012	1029	1054	rBV	93876	231083	42.79%	6.225%
19	4.582	1084	1086	1090	rVB3	445	287	0.05%	0.008%
20	4.621	1096	1098	1102	rVB2	279	152	0.03%	0.004%
21	4.643	1103	1105	1108	rBV	270	184	0.03%	0.005%
22	4.682	1113	1117	1119	rBV	237	207	0.04%	0.006%
23	4.762	1138	1142	1144	rBV	159	152	0.03%	0.004%
24	4.836	1161	1165	1169	rBV	315	303	0.06%	0.008%
25	4.897	1182	1184	1186	rBV2	297	188	0.03%	0.005%
26	5.097	1224	1246	1267	rBV2	215976	540026	100.00%	14.547%
27	5.338	1319	1321	1327	rBB2	297	265	0.05%	0.007%
28	5.370	1327	1331	1334	rBV	247	213	0.04%	0.006%
29	5.560	1387	1390	1393	rBB2	229	171	0.03%	0.005%
30	5.666	1407	1423	1446	rBV	172339	349476	64.71%	9.414%
31	5.814	1467	1469	1472	rVB	329	200	0.04%	0.005%
32	5.836	1472	1476	1478	rBV2	352	257	0.05%	0.007%
33	5.949	1496	1511	1525	rVB3	13263	25053	4.64%	0.675%
34	6.119	1550	1564	1585	rBV2	121117	245840	45.52%	6.623%

Data Path : Z:\VOASRV\HPCHEM1\MSVOA_V\DATA\VV122018\
 Data File : VV009087.D
 Acq On : 20 Dec 2018 16:37
 Operator : SY/MD
 Sample : J6471-01RE
 Misc : 5.45 G/10ML/MSVOA_V/SOIL
 ALS Vial : 1 Sample Multiplier: 1

Instrument :
 MSVOA_V
 ClientSampleId :
 F9H10RE

Integration Parameters: LSCINT.P

Integrator: RTE
 Smoothing : OFF
 Sampling : 1
 Start Thrs: 0.2
 Stop Thrs : 0

Filtering: 5
 Min Area: 0 % of largest Peak
 Max Peaks: 100
 Peak Location: TOP

If leading or trailing edge < 100 prefer < Baseline drop else tangent >
 Peak separation: 5

Method : Z:\VOASRV\HPCHEM1\MSVOA_V\METHOD\SOM2VLM120618S.M
 Title : VOC Analysis

35	6.328	1625	1629	1631	rBV	205	198	0.04%	0.005%
36	6.392	1642	1649	1652	rBB2	258	262	0.05%	0.007%
37	6.425	1657	1659	1663	rBV	168	163	0.03%	0.004%
38	6.534	1688	1693	1695	rBV	224	179	0.03%	0.005%
39	6.640	1723	1726	1727	rBV	330	162	0.03%	0.004%
40	6.749	1758	1760	1763	rVB	248	141	0.03%	0.004%
41	6.772	1764	1767	1770	rBB	246	159	0.03%	0.004%
42	6.797	1771	1775	1778	rBV2	291	306	0.06%	0.008%
43	7.032	1835	1848	1864	rBV2	63980	115899	21.46%	3.122%
44	7.193	1894	1898	1902	rVB2	261	234	0.04%	0.006%
45	7.225	1904	1908	1909	rBV	282	237	0.04%	0.006%
46	7.286	1916	1927	1937	rBV5	1531	3113	0.58%	0.084%
47	7.360	1938	1950	1968	rBV	242473	422204	78.18%	11.374%
48	7.666	2034	2045	2063	rBV	41842	71221	13.19%	1.919%
49	7.794	2079	2085	2091	rVB4	383	432	0.08%	0.012%
50	7.887	2111	2114	2118	rBV2	277	236	0.04%	0.006%
51	7.981	2135	2143	2151	rBV5	2743	4644	0.86%	0.125%
52	8.141	2181	2193	2223	rBV5	40681	106761	19.77%	2.876%
53	8.421	2276	2280	2285	rVV3	587	620	0.11%	0.017%
54	8.473	2286	2296	2308	rVV4	1649	3301	0.61%	0.089%
55	8.598	2332	2335	2337	rVB	251	136	0.03%	0.004%
56	8.617	2337	2341	2344	rBB	140	146	0.03%	0.004%
57	8.662	2353	2355	2358	rBV	165	139	0.03%	0.004%
58	8.752	2382	2383	2387	rBV	237	176	0.03%	0.005%
59	8.826	2401	2406	2408	rBV	277	221	0.04%	0.006%
60	8.897	2415	2428	2446	rBV	227568	379952	70.36%	10.235%
61	9.064	2470	2480	2485	rBV2	697	1139	0.21%	0.031%
62	9.138	2499	2503	2506	rBV	176	187	0.03%	0.005%
63	9.183	2507	2517	2529	rVV4	1738	2971	0.55%	0.080%
64	9.231	2530	2532	2535	rVB	245	141	0.03%	0.004%
65	9.495	2610	2614	2617	rBV	200	206	0.04%	0.006%
66	9.585	2638	2642	2644	rBV	747	480	0.09%	0.013%
67	9.894	2734	2738	2742	rVB2	302	285	0.05%	0.008%
68	9.916	2742	2745	2748	rBV2	296	253	0.05%	0.007%
69	9.977	2759	2764	2771	rVB2	893	1072	0.20%	0.029%
70	10.119	2805	2808	2810	rBV	185	152	0.03%	0.004%
71	10.264	2841	2853	2869	rBV	89299	143444	26.56%	3.864%

Data Path : Z:\VOASRV\HPCHEM1\MSVOA_V\DATA\VV122018\
 Data File : VV009087.D
 Acq On : 20 Dec 2018 16:37
 Operator : SY/MD
 Sample : J6471-01RE
 Misc : 5.45 G/10ML/MSVOA_V/SOIL
 ALS Vial : 1 Sample Multiplier: 1

Instrument :
 MSVOA_V
 ClientSampleId :
 F9H10RE

Integration Parameters: LSCINT.P

Integrator: RTE
 Smoothing : OFF Filtering: 5
 Sampling : 1 Min Area: 0 % of largest Peak
 Start Thrs: 0.2 Max Peaks: 100
 Stop Thrs : 0 Peak Location: TOP

If leading or trailing edge < 100 prefer < Baseline drop else tangent >
 Peak separation: 5

Method : Z:\VOASRV\HPCHEM1\MSVOA_V\METHOD\SOM2VLM120618S.M
 Title : VOC Analysis

72	10.428	2893	2904	2916	rVB2	19100	30744	5.69%	0.828%
73	10.736	2997	3000	3002	rBV	213	166	0.03%	0.004%
74	10.862	3034	3039	3044	rBV	185	316	0.06%	0.009%
75	10.958	3064	3069	3071	rBV3	748	685	0.13%	0.018%
76	10.993	3077	3080	3082	rBV3	263	201	0.04%	0.005%
77	11.080	3103	3107	3112	rBV2	282	320	0.06%	0.009%
78	11.196	3136	3143	3148	rVB6	1457	1752	0.32%	0.047%
79	11.299	3163	3175	3189	rBV	178549	294509	54.54%	7.934%
80	11.434	3211	3217	3218	rBV3	906	711	0.13%	0.019%
81	11.469	3225	3228	3239	rVB4	1370	1582	0.29%	0.043%
82	11.675	3280	3292	3308	rBV	173131	281457	52.12%	7.582%
83	11.733	3308	3310	3313	rBV2	260	156	0.03%	0.004%
84	11.794	3326	3329	3333	rBV	172	146	0.03%	0.004%
85	11.826	3333	3339	3341	rBV2	561	455	0.08%	0.012%
86	11.884	3349	3357	3358	rBV2	1251	1329	0.25%	0.036%
87	11.948	3375	3377	3378	rBV2	355	153	0.03%	0.004%
88	12.032	3397	3403	3408	rBV5	779	847	0.16%	0.023%
89	12.161	3440	3443	3446	rVB2	348	178	0.03%	0.005%
90	12.299	3477	3486	3495	rVB3	3068	4828	0.89%	0.130%
91	12.704	3608	3612	3614	rBV2	361	239	0.04%	0.006%
92	12.849	3652	3657	3660	rVB2	332	248	0.05%	0.007%
93	12.945	3683	3687	3690	rBV	354	208	0.04%	0.006%
94	12.987	3697	3700	3705	rVB	285	194	0.04%	0.005%
95	13.087	3729	3731	3735	rVB2	580	384	0.07%	0.010%
96	13.797	3945	3952	3960	rVB4	4028	5590	1.04%	0.151%
97	13.855	3966	3970	3974	rBV3	460	449	0.08%	0.012%
98	14.022	4019	4022	4025	rBV2	312	184	0.03%	0.005%
99	14.132	4053	4056	4061	rBV2	378	392	0.07%	0.011%
100	14.701	4231	4233	4239	rVB3	731	547	0.10%	0.015%

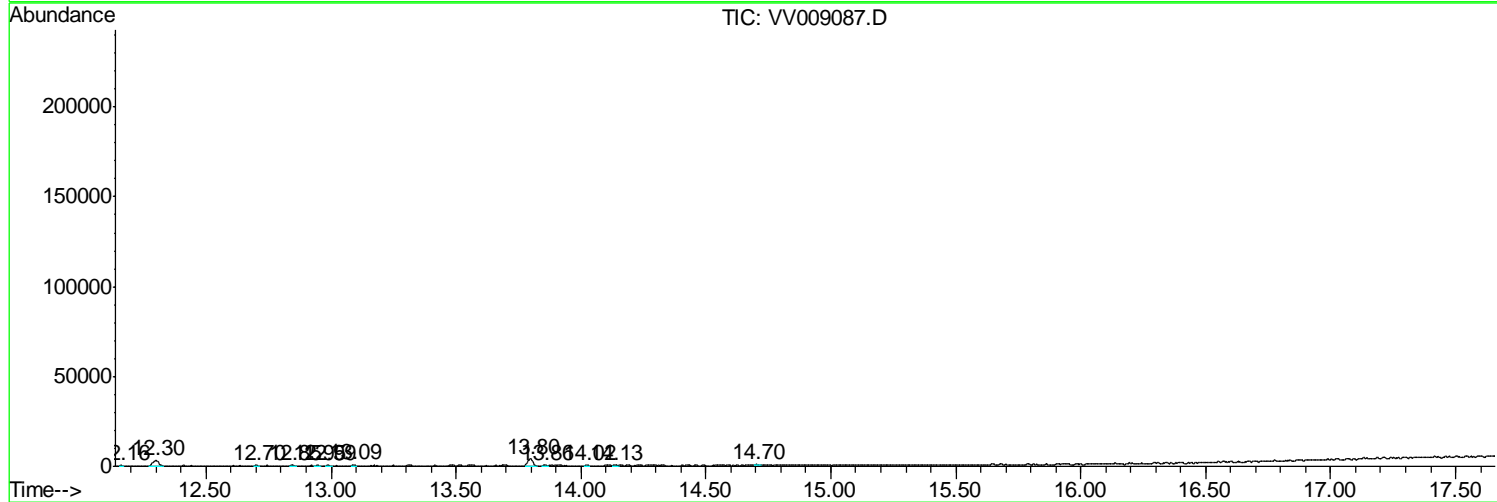
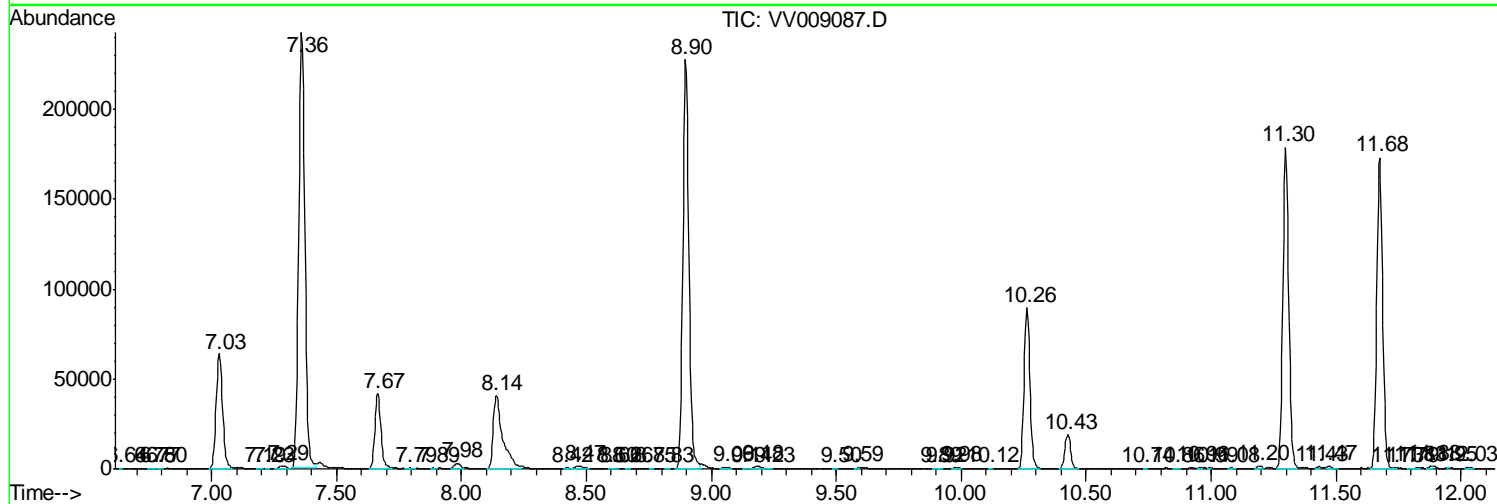
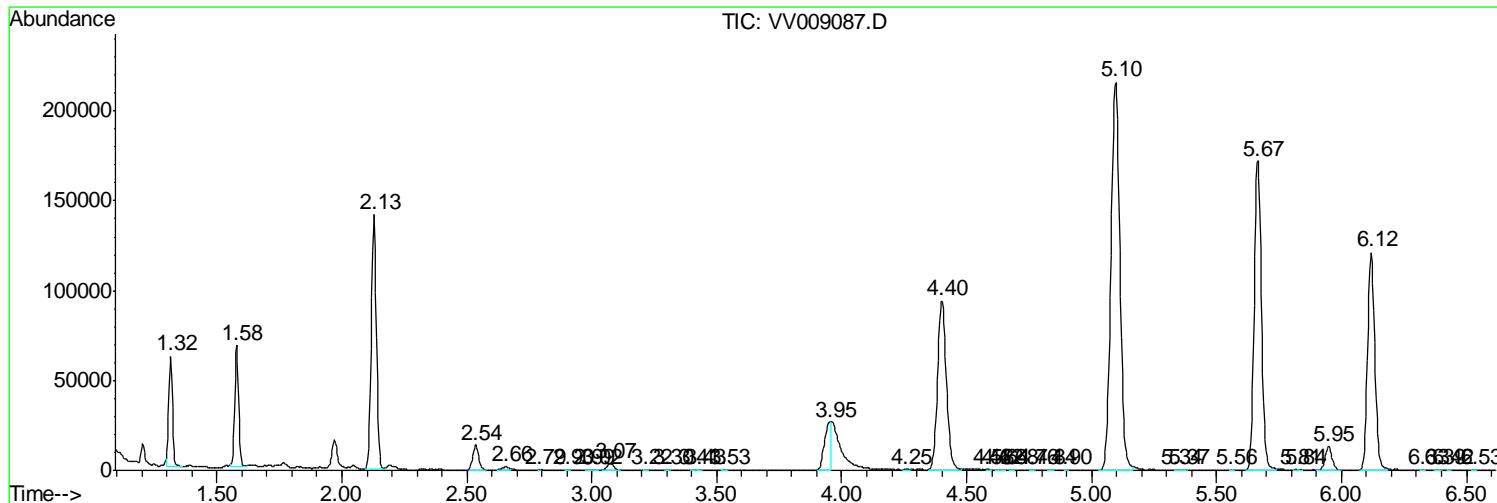
Sum of corrected areas: 3712163

Data Path : Z:\VOASRV\HPCHEM1\MSVOA_V\DATA\VV122018\
 Data File : VV009087.D
 Acq On : 20 Dec 2018 16:37
 Operator : SY/MD
 Sample : J6471-01RE
 Misc : 5.45 G/10ML/MSVOA_V/SOIL
 ALS Vial : 1 Sample Multiplier: 1

Instrument :
 MSVOA_V
ClientSampled :
 F9H10RE

Quant Method : Z:\VOASRV\HPCHEM1\MSVOA_V\METHOD\SOM2VLM120618S.M
 Quant Title : VOC Analysis

TIC Library : C:\DATABASE\NIST11.L
 TIC Integration Parameters: LSCINT.P



Data Path : Z:\VOASRV\HPCHEM1\MSVOA_V\DATA\VV122018\
Data File : VV009087.D
Acq On : 20 Dec 2018 16:37
Operator : SY/MD
Sample : J6471-01RE
Misc : 5.45 G/10ML/MSVOA_V/SOIL
ALS Vial : 1 Sample Multiplier: 1

Instrument :
MSVOA_V
ClientSampleId :
F9H10RE

Quant Method : Z:\VOASRV\HPCHEM1\MSVOA_V\METHOD\SOM2VLM120618S.M
Quant Title : VOC Analysis

TIC Library : C:\DATABASE\NIST11.L
TIC Integration Parameters: LSCINT.P

No Library Search Compounds Detected

Data Path : Z:\VOASRV\HPCHEM1\MSVOA_V\DATA\VV122018\
Data File : VV009087.D
Acq On : 20 Dec 2018 16:37
Operator : SY/MD
Sample : J6471-01RE
Misc : 5.45 G/10ML/MSVOA_V/SOIL
ALS Vial : 1 Sample Multiplier: 1

Instrument :
MSVOA_V
ClientSampleId :
F9H10RE

Quant Method : Z:\VOASRV\HPCHEM1\MSVOA_V\METHOD\SOM2VLM120618S.M
Quant Title : VOC Analysis

TIC Library : C:\DATABASE\NIST11.L
TIC Integration Parameters: LSCINT.P

TIC Top Hit name	RT	EstConc	Units	Response	--Internal Standard--			
					#	RT	Resp	Conc
