

Data Path : Z:\VOASRV\HPCHEM1\MSVOA V\DATA\VV122019\  
 Data File : VV014146.D  
 Acq On : 20 Dec 2019 11:09  
 Operator : SY/MD  
 Sample : K6286-03  
 Misc : 25.0mL/MSVOA V/WATER  
 ALS Vial : 5 Sample Multiplier: 1

Instrument :  
 MSVOA\_V  
 ClientSampled :  
 BFDX9

Quant Time: Dec 21 02:34:07 2019  
 Quant Method : Z:\VOASRV\HPCHEM1\MSVOA\_V\METHOD\SOMVTR112219WMA.M  
 Quant Title : TRACE VOA SOM01.0  
 QLast Update : Sat Dec 21 02:31:50 2019  
 Response via : Initial Calibration

Internal Standards	R.T.	QIon	Response	Conc	Units	Dev(Min)
1) 1,4-Difluorobenzene	5.66	114	378324	5.00	ug/L	0.00
28) Chlorobenzene-d5	8.89	117	383551	5.00	ug/L	0.00
60) 1,4-Dichlorobenzene-d4	11.29	152	159997	5.00	ug/L	0.00

## System Monitoring Compounds

4) Vinyl Chloride-d3	1.32	65	123341	5.27	ug/L	0.00
Spiked Amount	5.000	Range	40 - 130	Recovery	=	105.40%
7) Chloroethane-d5	1.58	69	109265	5.49	ug/L	0.00
Spiked Amount	5.000	Range	65 - 130	Recovery	=	109.80%
11) 1,1-Dichloroethene-d2	2.13	63	157801	4.00	ug/L	0.00
Spiked Amount	5.000	Range	60 - 125	Recovery	=	80.00%
20) 2-Butanone-d5	3.92	46	239784	49.26	ug/L	-0.03
Spiked Amount	50.000	Range	40 - 130	Recovery	=	98.52%
24) Chloroform-d	4.39	84	230784	4.89	ug/L	0.00
Spiked Amount	5.000	Range	70 - 125	Recovery	=	97.80%
26) 1,2-Dichloroethane-d4	5.07	65	111220	4.95	ug/L	0.00
Spiked Amount	5.000	Range	70 - 130	Recovery	=	99.00%
32) Benzene-d6	5.09	84	431786	4.36	ug/L	0.00
Spiked Amount	5.000	Range	70 - 125	Recovery	=	87.20%
36) 1,2-Dichloropropane-d6	6.11	67	136146	4.62	ug/L	0.00
Spiked Amount	5.000	Range	60 - 140	Recovery	=	92.40%
41) Toluene-d8	7.35	98	350877	3.78	ug/L	0.00
Spiked Amount	5.000	Range	70 - 130	Recovery	=	75.60%
43) trans-1,3-Dichloropropene-	7.66	79	45634	3.98	ug/L	0.00
Spiked Amount	5.000	Range	55 - 130	Recovery	=	79.60%
46) 2-Hexanone-d5	8.13	63	159824	37.75	ug/L	0.00
Spiked Amount	50.000	Range	45 - 130	Recovery	=	75.50%
57) 1,1,2,2-Tetrachloroethane-	10.25	84	93011	4.55	ug/L	0.00
Spiked Amount	5.000	Range	65 - 120	Recovery	=	91.00%
64) 1,2-Dichlorobenzene-d4	11.67	152	134245	4.75	ug/L	0.00
Spiked Amount	5.000	Range	80 - 120	Recovery	=	95.00%

## Target Compounds

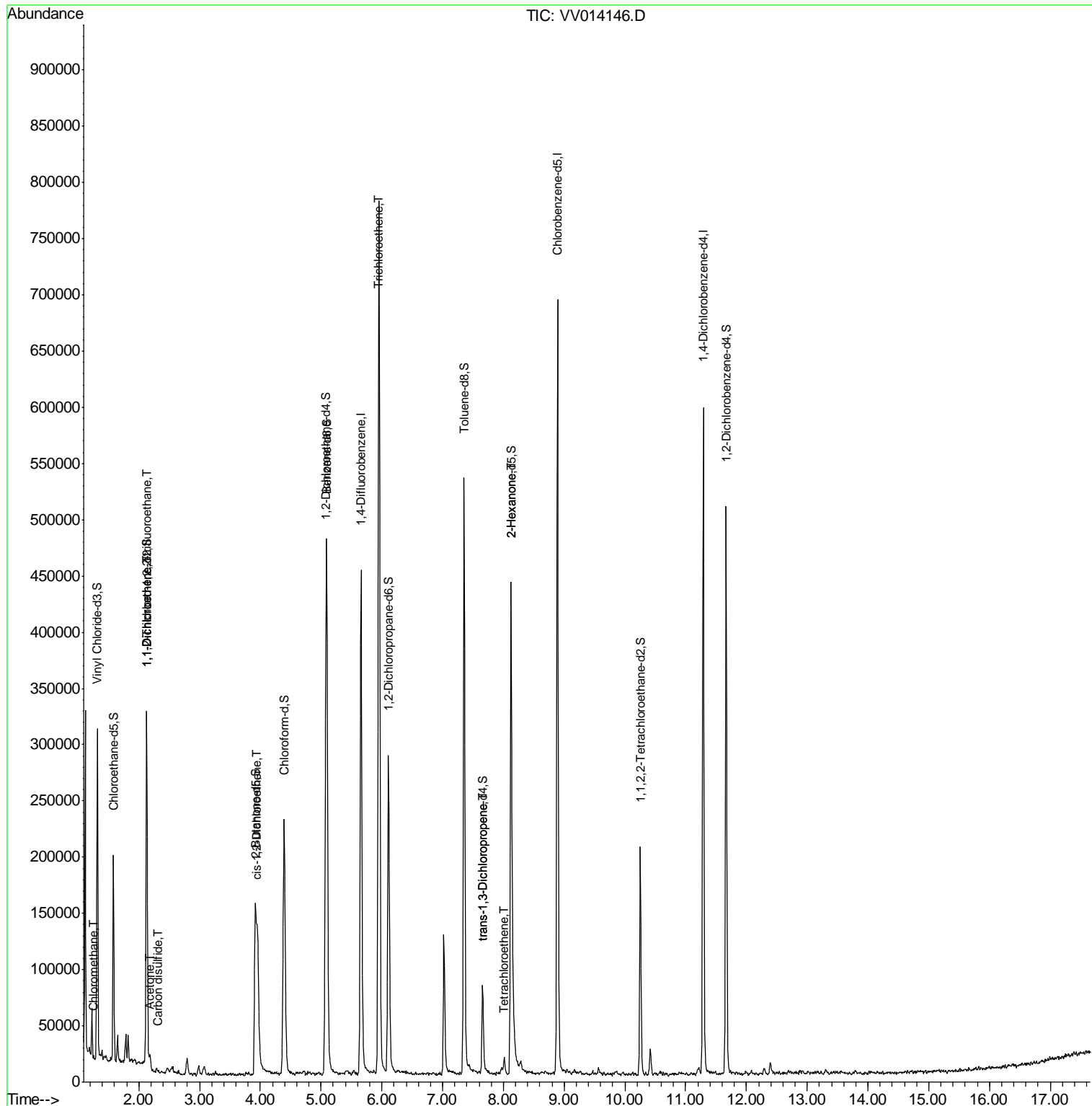
Target Compounds	R.T.	QIon	Response	Conc	Units	Ovalue
3) Chloromethane	1.25	50	1786	0.081	ug/L	96
10) 1,1,2-Trichloro-1,2,2-trif	2.13	101	1841	0.088	ug/L #	22
12) 1,1-Dichloroethene	2.13	96	3466	0.191	ug/L #	1
13) Acetone	2.18	43	10367	3.046	ug/L	68
14) Carbon disulfide	2.32	76	2141	0.051	ug/L #	75
22) cis-1,2-Dichloroethene	3.96	96	55349	2.298	ug/L	89
34) Trichloroethene	5.95	95	269124	10.369	ug/L	98
44) trans-1,3-Dichloropropene	7.66	75	2011	0.075	ug/L	90
47) Tetrachloroethene	8.01	164	3530	0.157	ug/L	97
48) 2-Hexanone	8.13	43	20431	2.029	ug/L #	79

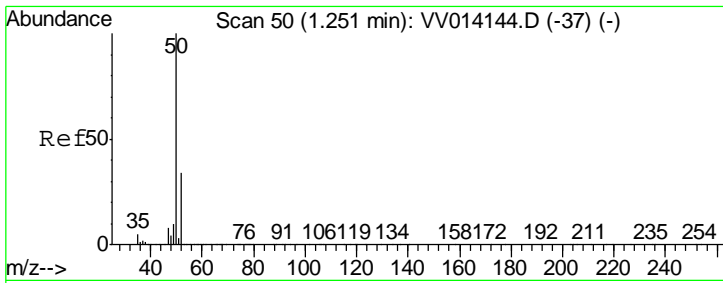
(#) = qualifier out of range (m) = manual integration (+) = signals summed

Data Path : Z:\VOASRV\HPCHEM1\MSVOA V\DATA\VV122019\  
 Data File : VV014146.D  
 Acq On : 20 Dec 2019 11:09  
 Operator : SY/MD  
 Sample : K6286-03  
 Misc : 25.0mL/MSVOA V/WATER  
 ALS Vial : 5 Sample Multiplier: 1

Instrument :  
 MSVOA\_V  
 Client Sampled :  
 BFDX9

Quant Time: Dec 21 02:34:07 2019  
 Quant Method : Z:\VOASRV\HPCHEM1\MSVOA\_V\METHOD\SOMVTR112219WMA.M  
 Quant Title : TRACE VOA SOM01.0  
 QLast Update : Sat Dec 21 02:31:50 2019  
 Response via : Initial Calibration

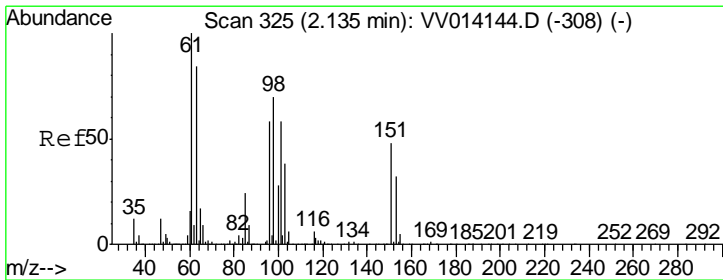
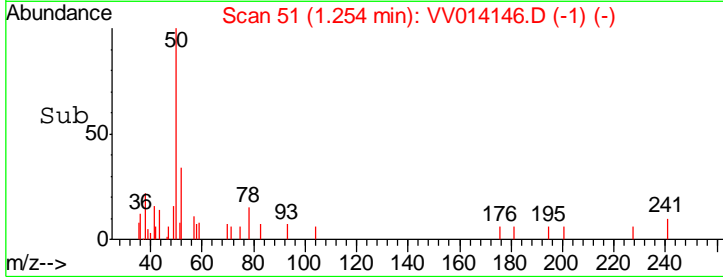
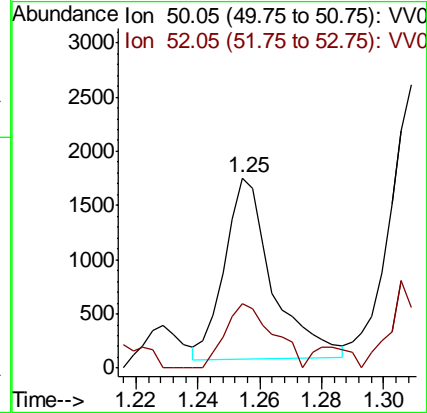
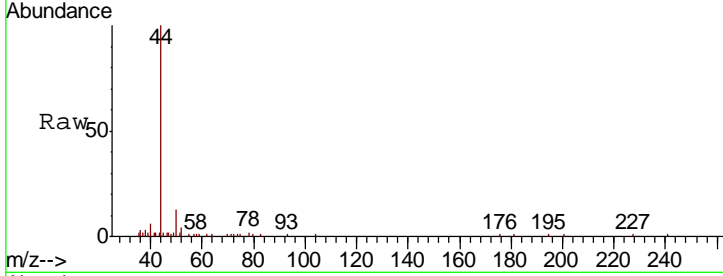




#3  
 Chloromethane  
 Concen: 0.081 ug/L  
 RT: 1.25 min Scan# 51  
 Delta R.T. 0.00 min  
 Lab File: VV014146.D  
 Acq: 20 Dec 2019 11:09

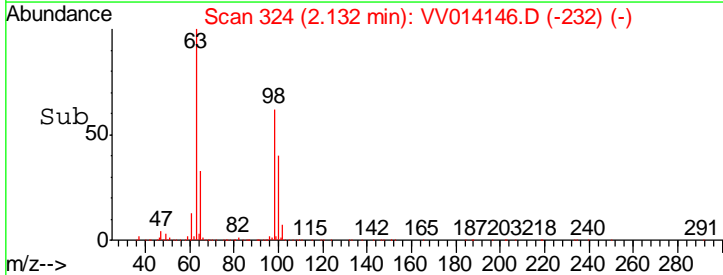
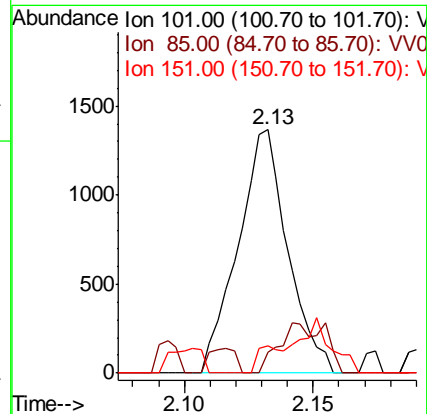
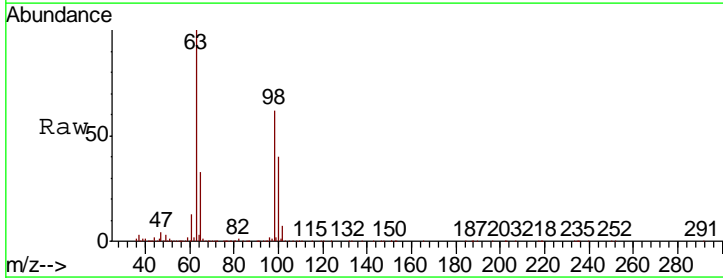
Instrument :  
 MSVOA\_V  
 ClientSampled :  
 BFDX9

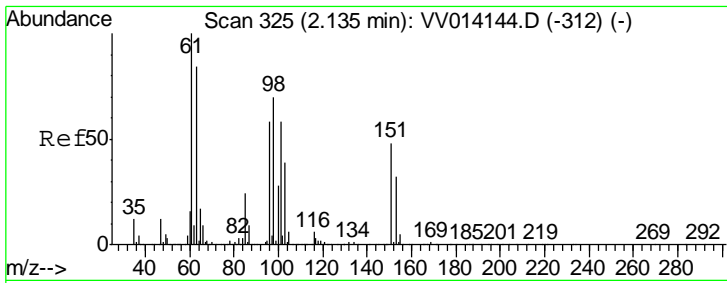
Tgt Ion: 50 Resp: 1786  
 Ion Ratio Lower Upper  
 50 100  
 52 34.1 22.5 41.7



#10  
 1,1,2-Trichloro-1,2,2-trifluoroethane  
 Concen: 0.088 ug/L  
 RT: 2.13 min Scan# 324  
 Delta R.T. -0.00 min  
 Lab File: VV014146.D  
 Acq: 20 Dec 2019 11:09

Tgt Ion: 101 Resp: 1841  
 Ion Ratio Lower Upper  
 101 100  
 85 5.4 33.4 50.0#  
 151 5.8 69.4 104.0#

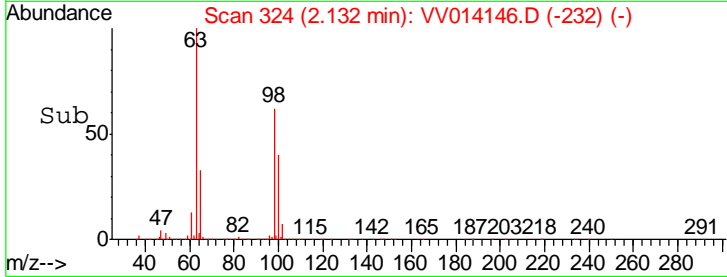
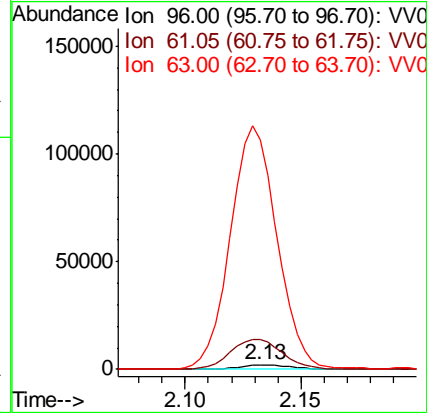
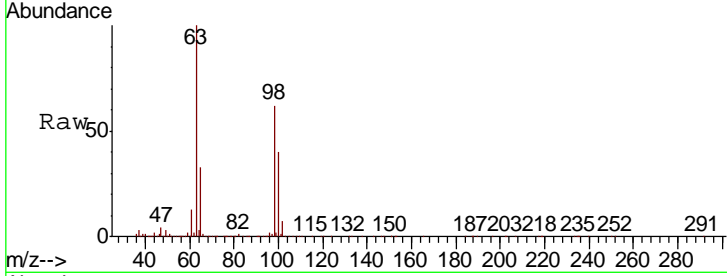




#12  
 1,1-Dichloroethene  
 Concen: 0.191 ug/L  
 RT: 2.13 min Scan# 324  
 Delta R.T. -0.00 min  
 Lab File: VV014146.D  
 Acq: 20 Dec 2019 11:09

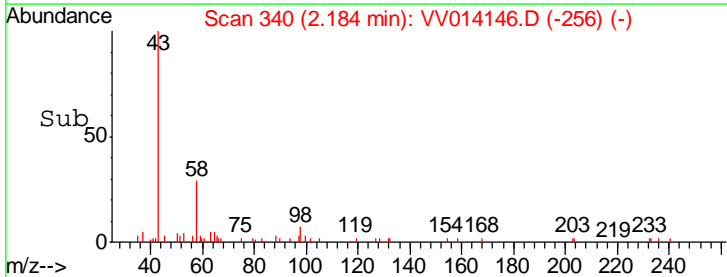
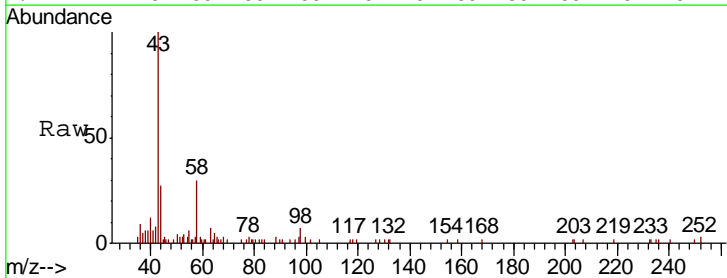
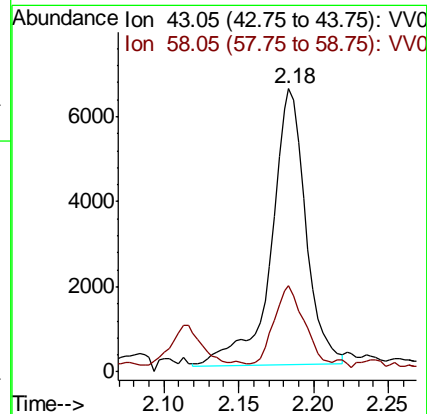
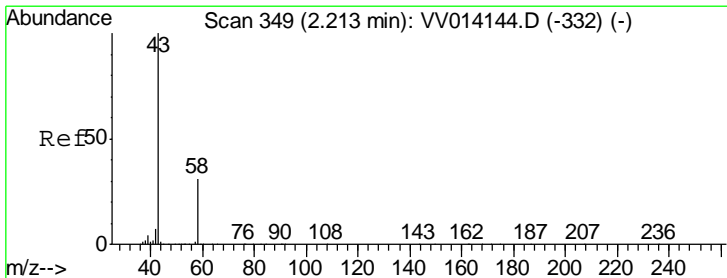
Instrument :  
 MSVOA\_V  
 ClientSampled :  
 BFDX9

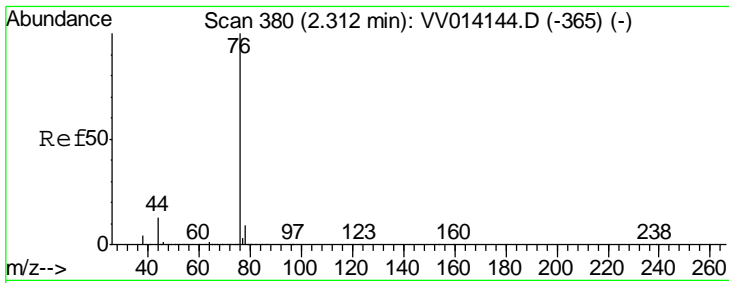
Tot Ion: 96 Resp: 3466  
 Ion Ratio Lower Upper  
 96 100  
 61 705.8 116.3 215.9#  
 63 5423.3 96.7 179.7#



#13  
 Acetone  
 Concen: 3.046 ug/L  
 RT: 2.18 min Scan# 340  
 Delta R.T. -0.03 min  
 Lab File: VV014146.D  
 Acq: 20 Dec 2019 11:09

Tgt Ion: 43 Resp: 10367  
 Ion Ratio Lower Upper  
 43 100  
 58 26.4 0.0 27.2

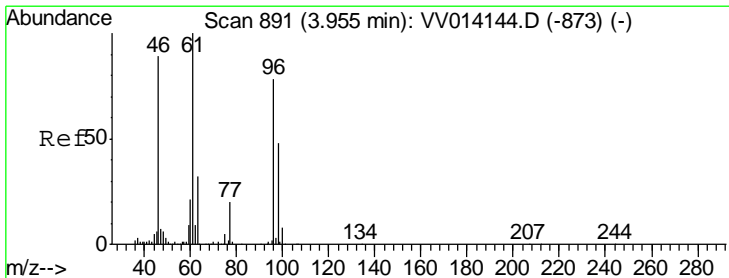
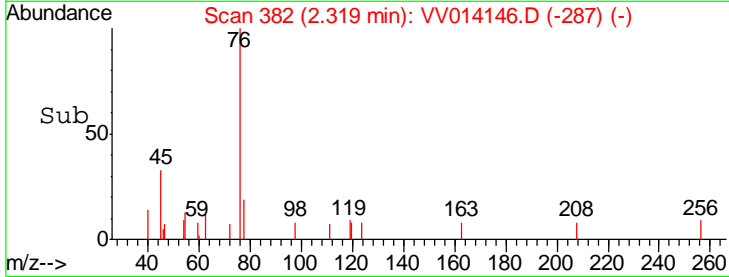
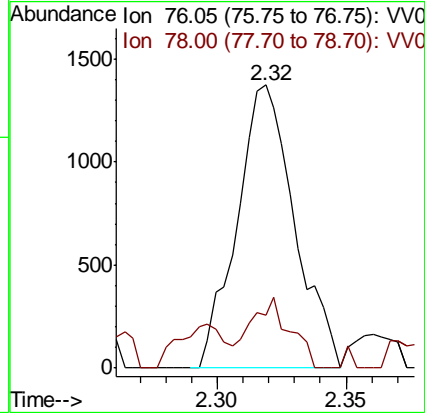
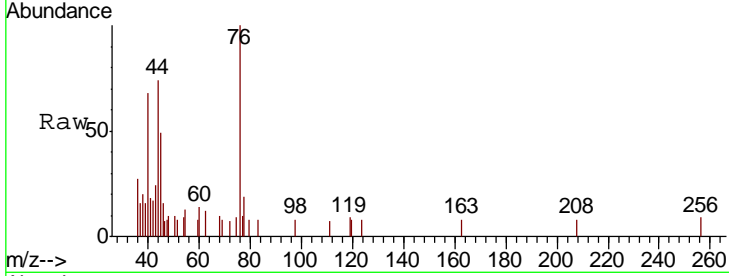




#14  
 Carbon disulfide  
 Concen: 0.051 ug/L  
 RT: 2.32 min Scan# 382  
 Delta R.T. 0.01 min  
 Lab File: VV014146.D  
 Acq: 20 Dec 2019 11:09

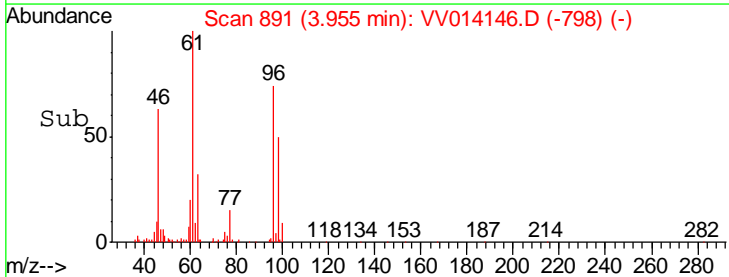
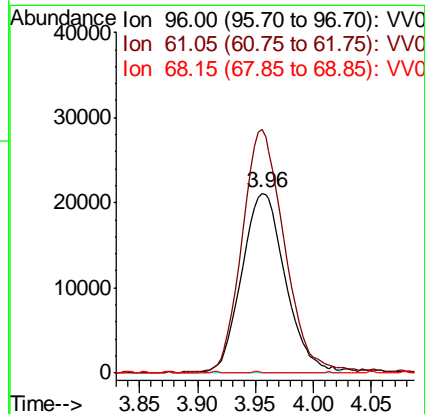
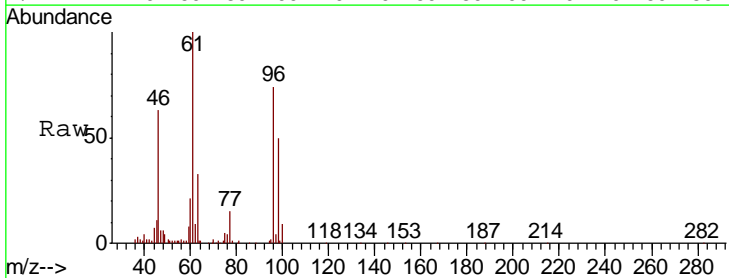
Instrument :  
 MSVOA\_V  
 ClientSampled :  
 BFDX9

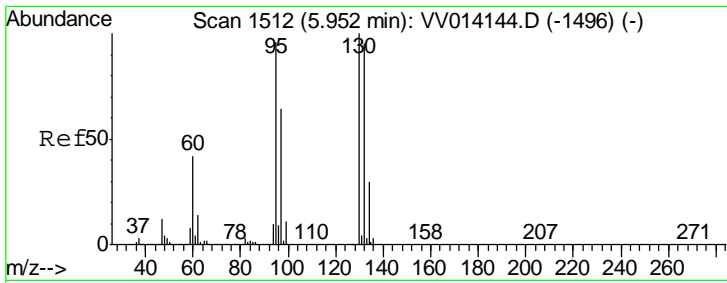
Tgt Ion	Resp	Lower	Upper
76	100		
78	18.6	7.5	11.3#



#22  
 cis-1,2-Dichloroethene  
 Concen: 2.298 ug/L  
 RT: 3.96 min Scan# 891  
 Delta R.T. 0.00 min  
 Lab File: VV014146.D  
 Acq: 20 Dec 2019 11:09

Tgt Ion	Resp	Lower	Upper
96	100		
61	135.4	86.1	159.9
68	0.0	0.0	0.0

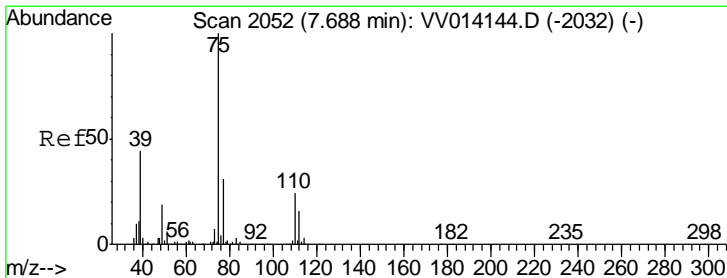
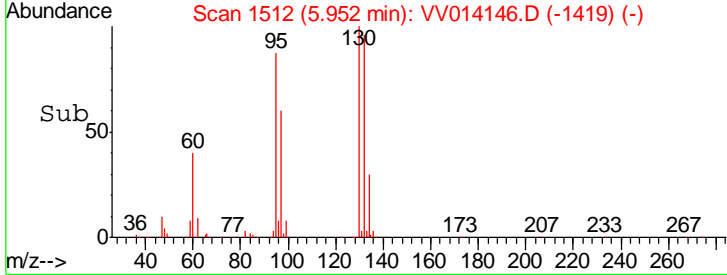
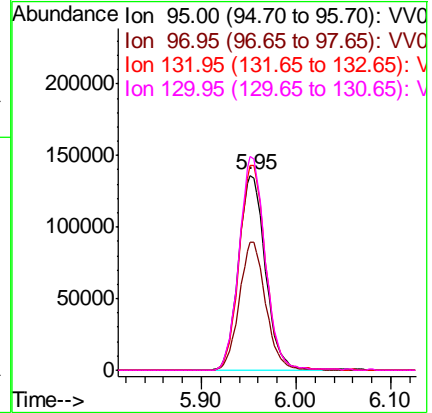
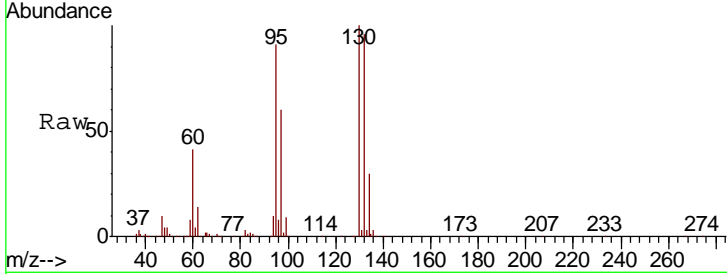




#34  
 Trichloroethene  
 Concen: 10.369 ug/L  
 RT: 5.95 min Scan# 1512  
 Delta R.T. 0.00 min  
 Lab File: VV014146.D  
 Acq: 20 Dec 2019 11:09

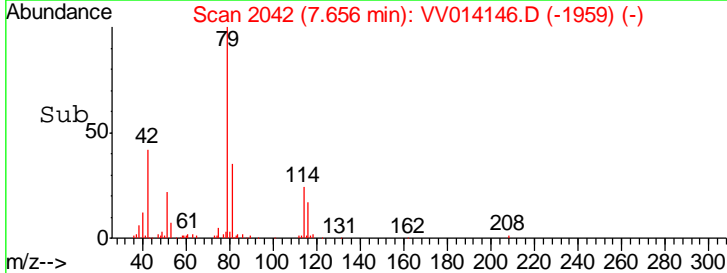
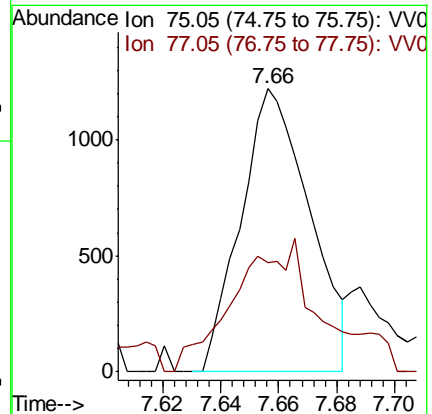
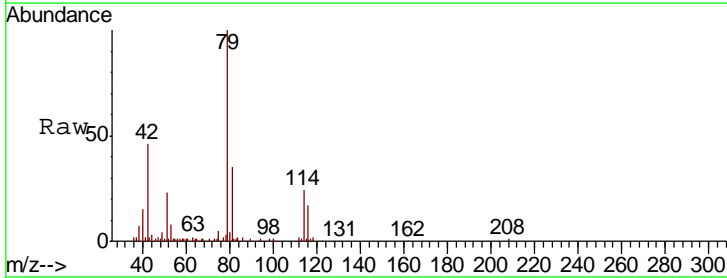
Instrument :  
 MSVOA\_V  
 ClientSampled :  
 BFDX9

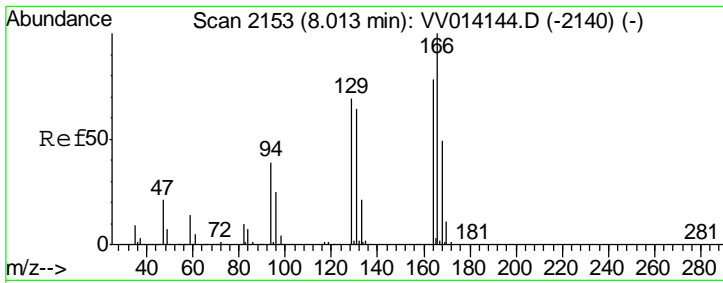
Tgt Ion	Resp	Lower	Upper
95	100		
97	65.9	45.6	84.8
132	105.3	70.5	130.9
130	109.7	75.9	140.9



#44  
 trans-1,3-Dichloropropene  
 Concen: 0.075 ug/L  
 RT: 7.66 min Scan# 2042  
 Delta R.T. -0.03 min  
 Lab File: VV014146.D  
 Acq: 20 Dec 2019 11:09

Tgt Ion	Resp	Lower	Upper
75	100		
77	38.7	23.0	42.8



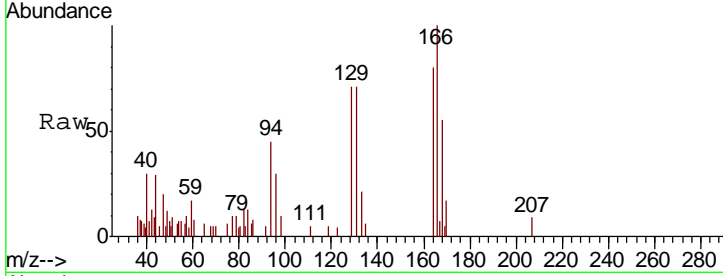


#47

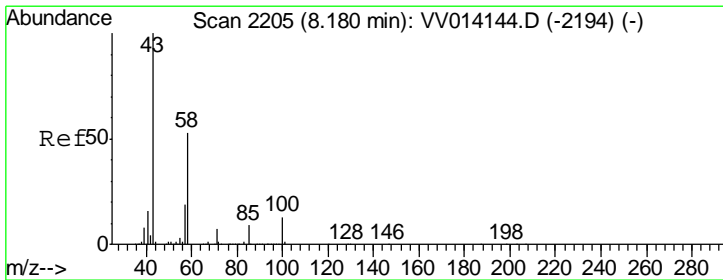
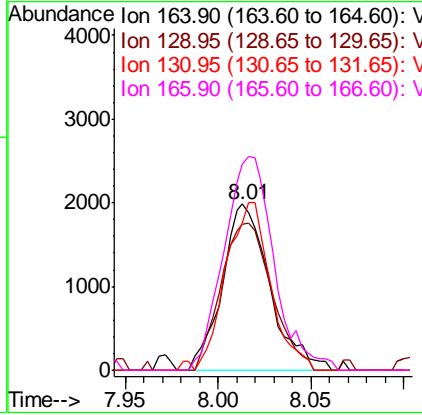
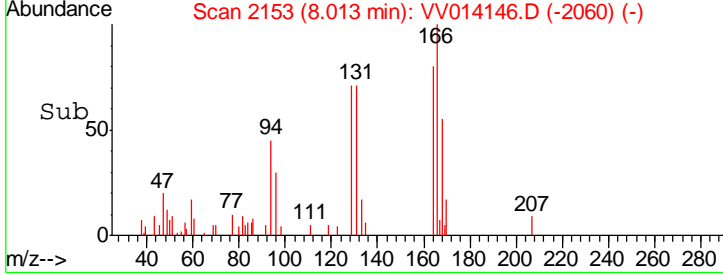
Tetrachloroethene

Concen: 0.157 ug/L  
 RT: 8.01 min Scan# 2153  
 Delta R.T. 0.00 min  
 Lab File: VV014146.D  
 Acq: 20 Dec 2019 11:09

Instrument : MSVOA\_V  
 ClientSampled : BFDX9



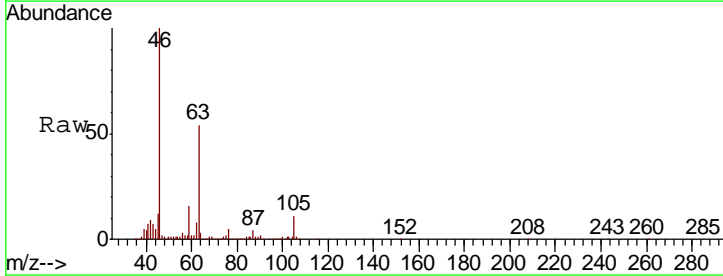
Tgt Ion	Resp	Lower	Upper
164	100		
129	87.8	60.3	112.1
131	88.9	59.9	111.3
166	124.5	89.1	165.5



#48

2-Hexanone

Concen: 2.029 ug/L  
 RT: 8.13 min Scan# 2189  
 Delta R.T. -0.05 min  
 Lab File: VV014146.D  
 Acq: 20 Dec 2019 11:09



Tgt Ion	Resp	Lower	Upper
43	100		
58	42.7	43.2	64.8#
57	37.3	15.4	23.2#
100	6.3	10.4	15.6#

