

Data Path : Z:\voasrv\HPCHEM1\MSVOA_V\Data\VW122022\
 Data File : VW029744.D
 Acq On : 20 Dec 2022 12:26
 Operator : SY/MD
 Sample : VIBLK308
 Misc : 5.0mL/MSVOA_V/WATER
 ALS Vial : 9 Sample Multiplier: 1

Instrument :
 MSVOA_V
 ClientSampleId :
 VIBLK308

Integration Parameters: LSCINT.P

Integrator: RTE
 Smoothing : OFF Filtering: 5
 Sampling : 1 Min Area: 0 % of largest Peak
 Start Thrs: 0.2 Max Peaks: 100
 Stop Thrs : 0 Peak Location: TOP

If leading or trailing edge < 100 prefer < Baseline drop else tangent >
 Peak separation: 5

Method : Z:\voasrv\HPCHEM1\MSVOA_V\Method\SFAMVLM120722WMA.M
 Title : VOC Analysis

Signal : TIC: VW029744.D\data.ms

peak #	R.T. min	first scan	max scan	last scan	PK TY	peak height	corr. area	corr. % max.	% of total
1	1.307	77	83	97	rVB	185861	189240	13.54%	1.720%
2	1.564	156	163	176	rVB	171996	190712	13.65%	1.733%
3	2.105	321	331	347	rBV	302227	434754	31.11%	3.951%
4	2.503	445	455	471	rVB2	18214	31588	2.26%	0.287%
5	3.140	648	653	656	rBV3	340	340	0.02%	0.003%
6	3.313	703	707	714	rBV2	370	367	0.03%	0.003%
7	3.339	714	715	716	rBV2	204	69	0.00%	0.001%
8	3.426	740	742	748	rBV3	239	199	0.01%	0.002%
9	3.484	757	760	764	rBV2	251	189	0.01%	0.002%
10	3.522	769	772	777	rBV3	240	221	0.02%	0.002%
11	3.548	777	780	784	rVB2	346	269	0.02%	0.002%
12	3.590	791	793	796	rVB2	241	107	0.01%	0.001%
13	3.780	850	852	853	rBV2	204	67	0.00%	0.001%
14	3.789	853	855	859	rVB3	381	255	0.02%	0.002%
15	3.834	864	869	870	rBV	292	237	0.02%	0.002%
16	3.879	870	883	938	rBV2	106533	390117	27.92%	3.545%
17	4.336	1009	1025	1057	rBV	213115	544772	38.98%	4.951%
18	4.622	1111	1114	1117	rBV4	358	267	0.02%	0.002%
19	4.731	1143	1148	1152	rBV2	397	370	0.03%	0.003%
20	4.757	1152	1156	1159	rBV3	364	366	0.03%	0.003%
21	4.834	1178	1180	1181	rBV3	176	84	0.01%	0.001%
22	4.844	1181	1183	1185	rBV2	294	142	0.01%	0.001%
23	4.908	1201	1203	1204	rBV	222	104	0.01%	0.001%
24	4.950	1214	1216	1217	rBV	311	115	0.01%	0.001%
25	5.037	1224	1243	1270	rBV2	524872	1397491	100.00%	12.700%
26	5.333	1333	1335	1337	rBV2	327	192	0.01%	0.002%
27	5.439	1365	1368	1371	rBV2	363	250	0.02%	0.002%
28	5.468	1372	1377	1381	rBV4	436	485	0.03%	0.004%
29	5.538	1395	1399	1402	rBV2	295	269	0.02%	0.002%
30	5.606	1403	1420	1450	rBV	435916	910240	65.13%	8.272%
31	5.899	1501	1511	1527	rVB6	4719	9752	0.70%	0.089%
32	5.998	1539	1542	1544	rVB2	547	322	0.02%	0.003%
33	6.011	1544	1546	1547	rBV2	191	77	0.01%	0.001%
34	6.059	1547	1561	1595	rBV	316371	656578	46.98%	5.967%
35	6.304	1636	1637	1641	rBV	132	90	0.01%	0.001%
36	6.329	1642	1645	1647	rVV2	181	94	0.01%	0.001%

Data Path : Z:\voasrv\HPCHEM1\MSVOA_V\Data\VW122022\
 Data File : VW029744.D
 Acq On : 20 Dec 2022 12:26
 Operator : SY/MD
 Sample : VIBLK308
 Misc : 5.0mL/MSVOA_V/WATER
 ALS Vial : 9 Sample Multiplier: 1

Instrument :
 MSVOA_V
 ClientSampleId :
 VIBLK308

Integration Parameters: LSCINT.P

Integrator: RTE
 Smoothing : OFF
 Sampling : 1
 Start Thrs : 0.2
 Stop Thrs : 0

Filtering: 5
 Min Area: 0 % of largest Peak
 Max Peaks: 100
 Peak Location: TOP

If leading or trailing edge < 100 prefer < Baseline drop else tangent >
 Peak separation: 5

Method : Z:\voasrv\HPCHEM1\MSVOA_V\Method\SFAMVLM120722WMA.M
 Title : VOC Analysis

37	6.362	1653	1655	1656	rBV	155	50	0.00%	0.000%
38	6.381	1660	1661	1662	rBV	260	62	0.00%	0.001%
39	6.432	1674	1677	1679	rBV	326	161	0.01%	0.001%
40	6.481	1689	1692	1693	rBV	167	85	0.01%	0.001%
41	6.509	1698	1701	1702	rBV	162	75	0.01%	0.001%
42	6.532	1706	1708	1711	rBV2	230	149	0.01%	0.001%
43	6.551	1711	1714	1716	rBV	249	142	0.01%	0.001%
44	6.580	1721	1723	1724	rBV	196	84	0.01%	0.001%
45	6.616	1730	1734	1735	rBV2	556	313	0.02%	0.003%
46	6.709	1762	1763	1765	rBV2	140	64	0.00%	0.001%
47	6.825	1797	1799	1801	rBV	156	86	0.01%	0.001%
48	6.837	1801	1803	1805	rBV	280	163	0.01%	0.001%
49	6.879	1814	1816	1818	rBV2	240	166	0.01%	0.002%
50	6.905	1822	1824	1825	rBV2	244	110	0.01%	0.001%
51	6.976	1834	1846	1871	rBV	149098	281229	20.12%	2.556%
52	7.307	1936	1949	1980	rBV	600304	1075122	76.93%	9.770%
53	7.612	2034	2044	2071	rBV	102645	185340	13.26%	1.684%
54	8.085	2180	2191	2227	rBV	358860	720589	51.56%	6.548%
55	8.471	2307	2311	2313	rVB4	464	303	0.02%	0.003%
56	8.709	2383	2385	2387	rVB	215	65	0.00%	0.001%
57	8.763	2398	2402	2406	rBV5	499	468	0.03%	0.004%
58	8.796	2411	2412	2413	rBV5	214	61	0.00%	0.001%
59	8.844	2414	2427	2452	rBV	664067	1110581	79.47%	10.093%
60	9.255	2553	2555	2558	rBV	265	151	0.01%	0.001%
61	9.310	2569	2572	2573	rBV	431	208	0.01%	0.002%
62	9.381	2590	2594	2597	rVB2	273	191	0.01%	0.002%
63	9.397	2597	2599	2604	rVB2	525	334	0.02%	0.003%
64	9.432	2604	2610	2611	rBV2	374	369	0.03%	0.003%
65	9.471	2620	2622	2623	rBV2	214	75	0.01%	0.001%
66	9.506	2632	2633	2638	rVB	187	116	0.01%	0.001%
67	9.538	2638	2643	2647	rBV3	747	842	0.06%	0.008%
68	9.558	2647	2649	2653	rVB2	552	378	0.03%	0.003%
69	9.580	2653	2656	2657	rBV	394	194	0.01%	0.002%
70	9.590	2657	2659	2662	rVB3	364	193	0.01%	0.002%
71	9.615	2665	2667	2669	rVB	338	137	0.01%	0.001%
72	9.632	2669	2672	2677	rBV4	470	457	0.03%	0.004%
73	9.683	2686	2688	2690	rVB4	210	58	0.00%	0.001%
74	9.699	2690	2693	2695	rBV	206	113	0.01%	0.001%
75	9.722	2696	2700	2703	rVB2	365	263	0.02%	0.002%
76	9.738	2703	2705	2708	rBV3	318	216	0.02%	0.002%

Data Path : Z:\voasrv\HPCHEM1\MSVOA_V\Data\VW122022\
 Data File : WV029744.D
 Acq On : 20 Dec 2022 12:26
 Operator : SY/MD
 Sample : VIBLK308
 Misc : 5.0mL/MSVOA_V/WATER
 ALS Vial : 9 Sample Multiplier: 1

Instrument :
 MSVOA_V
 ClientSampleId :
 VIBLK308

Integration Parameters: LSCINT.P

Integrator: RTE
 Smoothing : OFF Filtering: 5
 Sampling : 1 Min Area: 0 % of largest Peak
 Start Thrs: 0.2 Max Peaks: 100
 Stop Thrs : 0 Peak Location: TOP

If leading or trailing edge < 100 prefer < Baseline drop else tangent >
 Peak separation: 5

Method : Z:\voasrv\HPCHEM1\MSVOA_V\Method\SFAMVLM120722WMA.M
 Title : VOC Analysis

77	9.863	2742	2744	2747	rVB	224	128	0.01%	0.001%
78	9.879	2747	2749	2751	rVB	131	53	0.00%	0.000%
79	9.892	2751	2753	2754	rBV2	186	94	0.01%	0.001%
80	9.950	2768	2771	2773	rBV2	401	240	0.02%	0.002%
81	9.979	2778	2780	2784	rVB2	345	190	0.01%	0.002%
82	10.005	2785	2788	2790	rBV	295	131	0.01%	0.001%
83	10.027	2790	2795	2801	rVB4	528	583	0.04%	0.005%
84	10.056	2801	2804	2805	rBV	224	140	0.01%	0.001%
85	10.078	2808	2811	2812	rBV	210	135	0.01%	0.001%
86	10.162	2828	2837	2839	rBV	6232	7425	0.53%	0.067%
87	10.204	2840	2850	2870	rVB	484850	757581	54.21%	6.885%
88	10.439	2922	2923	2924	rBV	282	108	0.01%	0.001%
89	10.503	2941	2943	2946	rBV	276	223	0.02%	0.002%
90	10.525	2948	2950	2952	rBV	535	224	0.02%	0.002%
91	10.625	2976	2981	2985	rBV5	500	540	0.04%	0.005%
92	11.168	3149	3150	3151	rBV5	388	143	0.01%	0.001%
93	11.236	3159	3171	3194	rBV	685957	1081375	77.38%	9.827%
94	11.548	3257	3268	3275	rBV6	4853	9241	0.66%	0.084%
95	11.612	3277	3288	3308	rVV	628788	1001306	71.65%	9.099%
96	11.889	3372	3374	3377	rBV3	301	187	0.01%	0.002%
97	12.008	3410	3411	3413	rBV2	327	131	0.01%	0.001%
98	12.043	3417	3422	3423	rBV2	574	402	0.03%	0.004%
99	12.239	3477	3483	3488	rBV5	1516	2094	0.15%	0.019%
100	12.783	3649	3652	3655	rBV4	831	768	0.05%	0.007%

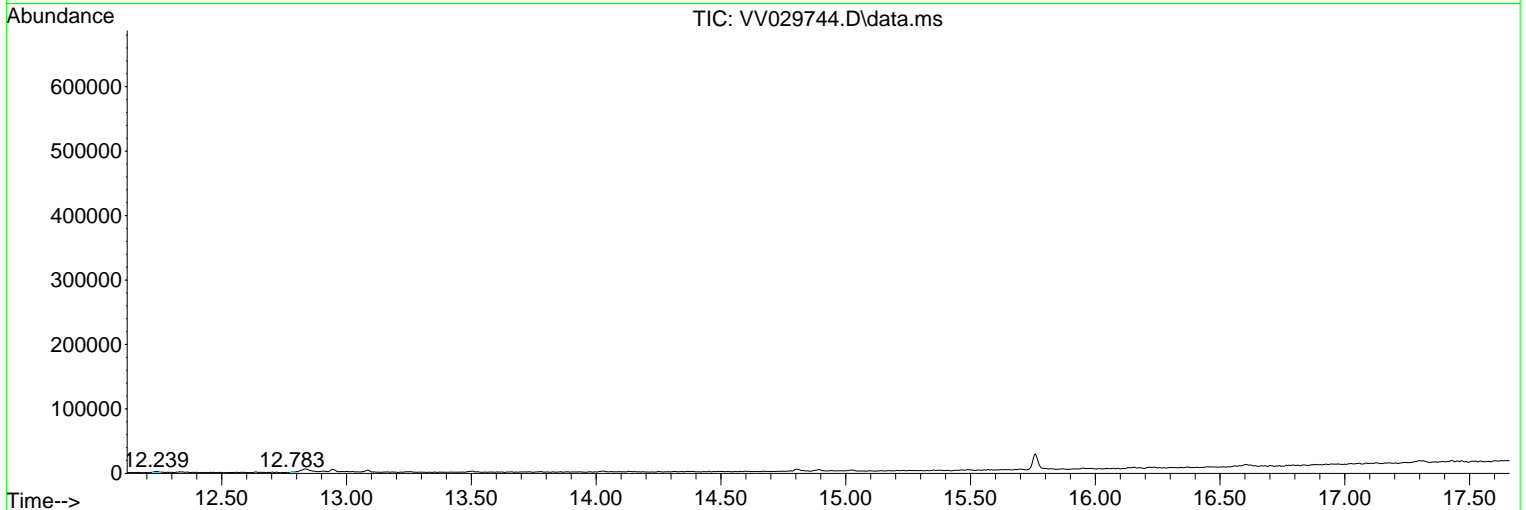
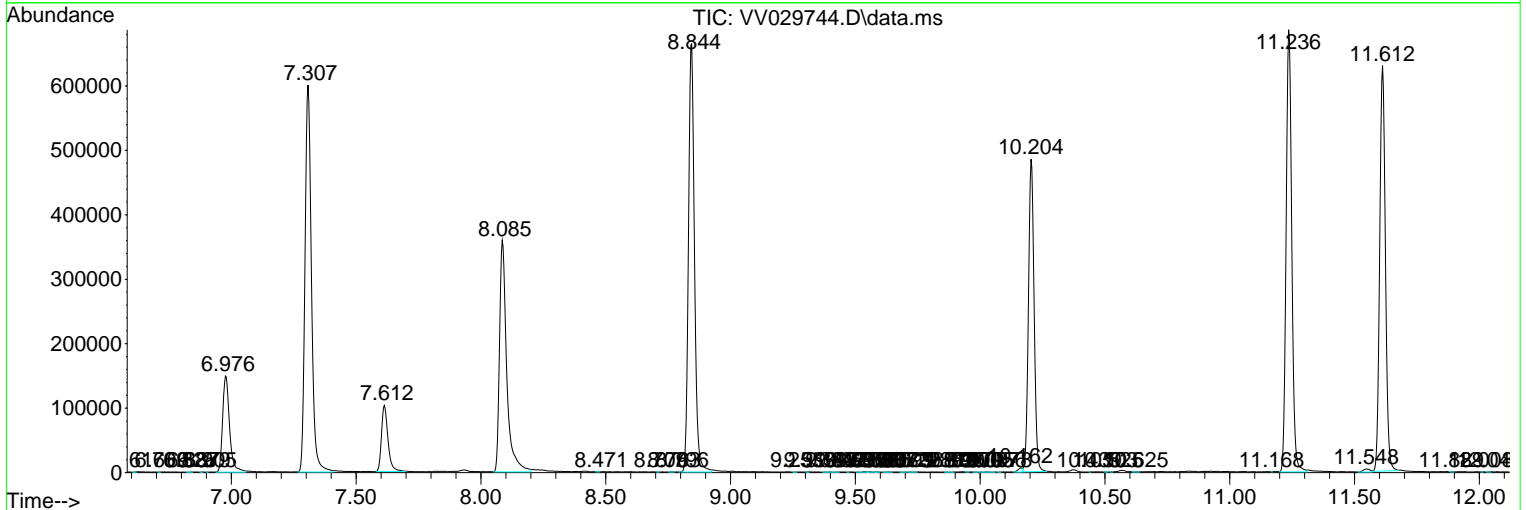
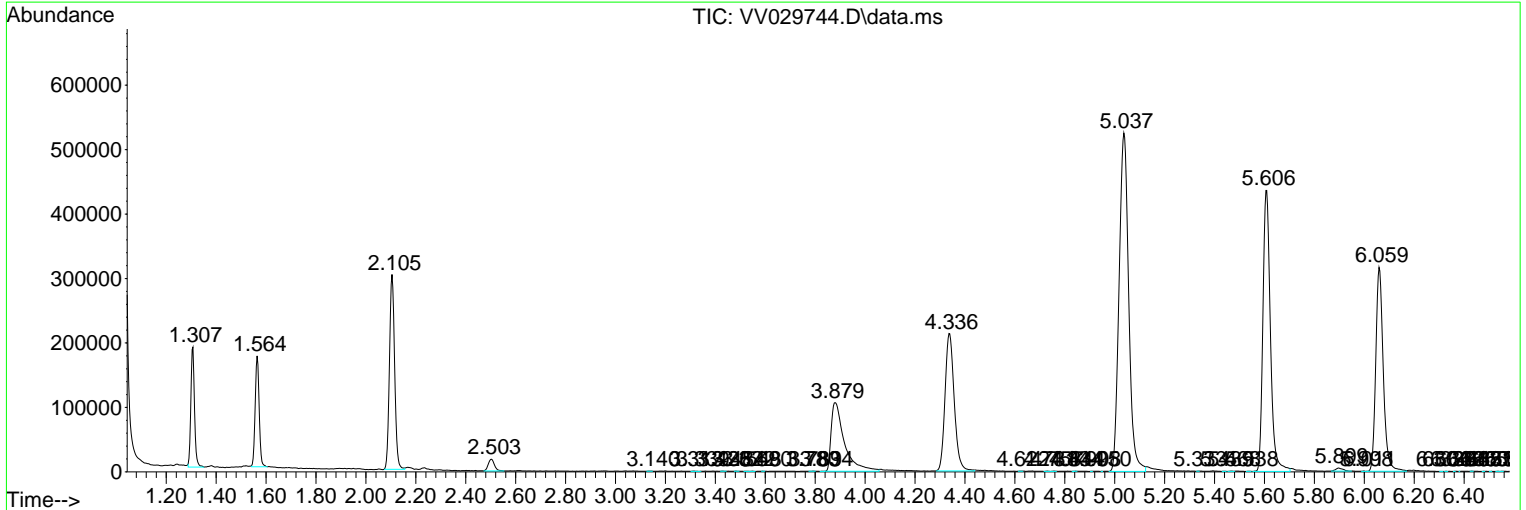
Sum of corrected areas: 11003996

Data Path : Z:\voasrv\HPCHEM1\MSVOA_V\Data\VV122022\
 Data File : VV029744.D
 Acq On : 20 Dec 2022 12:26
 Operator : SY/MD
 Sample : VIBLK308
 Misc : 5.0mL/MSVOA_V/WATER
 ALS Vial : 9 Sample Multiplier: 1

Instrument :
 MSVOA_V
 ClientSampleId :
 VIBLK308

Quant Method : Z:\voasrv\HPCHEM1\MSVOA_V\Method\SFAMVLM120722WMA.M
 Quant Title : VOC Analysis

TIC Library : C:\Database\NIST0.L
 TIC Integration Parameters: LSCINT.P



Library Search Compound Report

Data Path : Z:\voasrv\HPCHEM1\MSVOA_V\Data\VV122022\
Data File : VV029744.D
Acq On : 20 Dec 2022 12:26
Operator : SY/MD
Sample : VIBLK308
Misc : 5.0mL/MSVOA_V/WATER
ALS Vial : 9 Sample Multiplier: 1

Instrument :
MSVOA_V
ClientSampleId :
VIBLK308

Quant Method : Z:\voasrv\HPCHEM1\MSVOA_V\Method\SFAMVLM120722WMA.M
Quant Title : VOC Analysis

TIC Library : C:\Database\NIST20.L
TIC Integration Parameters: LSCINT.P

No Library Search Compounds Detected

Data Path : Z:\voasrv\HPCHEM1\MSVOA_V\Data\VV122022\
Data File : VV029744.D
Acq On : 20 Dec 2022 12:26
Operator : SY/MD
Sample : VIBLK308
Misc : 5.0mL/MSVOA_V/WATER
ALS Vial : 9 Sample Multiplier: 1

Instrument :
MSVOA_V
ClientSampleId :
VIBLK308

Quant Method : Z:\voasrv\HPCHEM1\MSVOA_V\Method\SFAMVLM120722WMA.M
Quant Title : VOC Analysis

TIC Library : C:\Database\NIST0.L
TIC Integration Parameters: LSCINT.P

TIC Top Hit name	RT	EstConc	Units	Response	--Internal Standard--		
					#	RT	Resp Conc
