

Data Path : Z:\voasrv\HPCHEM1\MSVOA\_V\Data\VW122023\  
 Data File : VV033505.D  
 Acq On : 20 Dec 2023 12:37  
 Operator : SY/MD  
 Sample : 05850-02  
 Misc : 5.0mL/MSVOA\_V/WATER  
 ALS Vial : 10 Sample Multiplier: 1

Instrument :  
 MSVOA\_V  
 ClientSampleId :

Quant Time: Dec 21 01:46:12 2023  
 Quant Method : Z:\voasrv\HPCHEM1\MSVOA\_V\Method\SFAMVLM121523WMA.M  
 Quant Title : VOC Analysis  
 QLast Update : Thu Dec 21 01:43:54 2023  
 Response via : Initial Calibration

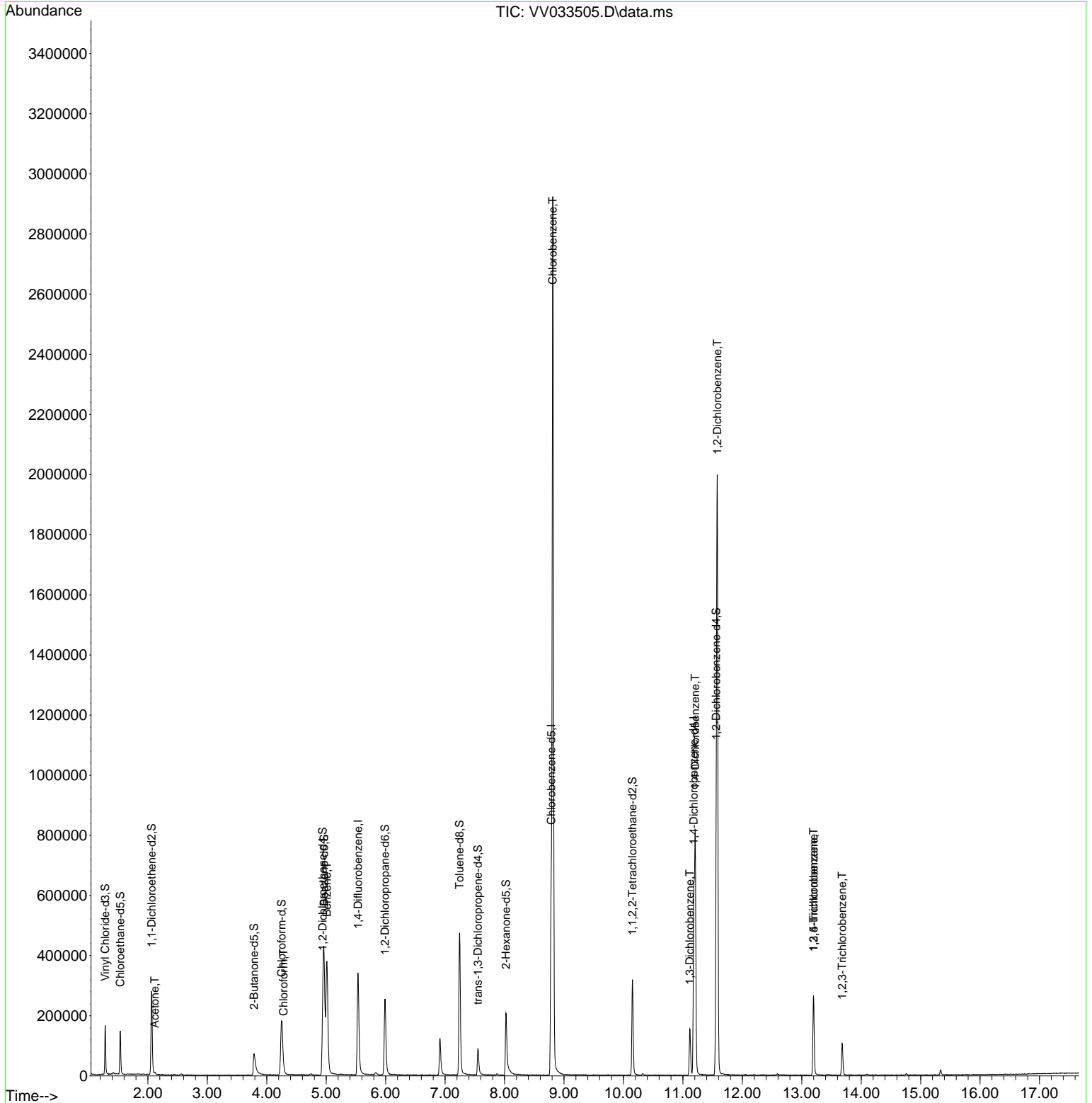
Compound	R.T.	QIon	Response	Conc	Units	Dev(Min)
Internal Standards						
1) 1,4-Difluorobenzene	5.535	114	287102	50.000	ug/L	0.00
28) Chlorobenzene-d5	8.786	117	295069	50.000	ug/L	0.00
58) 1,4-Dichlorobenzene-d4	11.185	152	134409	50.000	ug/L	0.00
System Monitoring Compounds						
4) Vinyl Chloride-d3	1.281	65	103736	46.919	ug/L	0.00
Spiked Amount	50.000	Range 60 - 135	Recovery =	93.840%		
7) Chloroethane-d5	1.535	69	93619	47.184	ug/L	0.00
Spiked Amount	50.000	Range 70 - 130	Recovery =	94.360%		
11) 1,1-Dichloroethene-d2	2.063	65	46846	42.564	ug/L	0.00
Spiked Amount	50.000	Range 60 - 125	Recovery =	85.120%		
21) 2-Butanone-d5	3.786	46	104510	93.790	ug/L	0.00
Spiked Amount	100.000	Range 40 - 130	Recovery =	93.790%		
24) Chloroform-d	4.249	84	194040	44.368	ug/L	0.00
Spiked Amount	50.000	Range 70 - 125	Recovery =	88.740%		
26) 1,2-Dichloroethane-d4	4.941	65	126475	47.075	ug/L	0.00
Spiked Amount	50.000	Range 70 - 125	Recovery =	94.160%		
32) Benzene-d6	4.963	84	372335	46.851	ug/L	0.00
Spiked Amount	50.000	Range 70 - 125	Recovery =	93.700%		
36) 1,2-Dichloropropane-d6	5.989	67	118865	49.282	ug/L	0.00
Spiked Amount	50.000	Range 70 - 120	Recovery =	98.560%		
41) Toluene-d8	7.243	98	310992	42.767	ug/L	0.00
Spiked Amount	50.000	Range 80 - 120	Recovery =	85.540%		
43) trans-1,3-Dichloroprop...	7.555	79	49459	41.841	ug/L	0.00
Spiked Amount	50.000	Range 60 - 125	Recovery =	83.680%		
47) 2-Hexanone-d5	8.024	63	66703	82.222	ug/L	0.00
Spiked Amount	100.000	Range 45 - 130	Recovery =	82.220%		
56) 1,1,2,2-Tetrachloroeth...	10.153	84	145851	42.073	ug/L	0.00
Spiked Amount	50.000	Range 65 - 120	Recovery =	84.140%		
66) 1,2-Dichlorobenzene-d4	11.561	152	126330	50.017	ug/L	0.00
Spiked Amount	50.000	Range 80 - 120	Recovery =	100.040%		
Target Compounds						
13) Acetone	2.114	43	5716	4.419	ug/L	95
25) Chloroform	4.281	83	8907	2.159	ug/L	97
33) Benzene	5.011	78	388678	49.421	ug/L	100
51) Chlorobenzene	8.812	112	1446852	240.846	ug/L	96
64) 1,3-Dichlorobenzene	11.117	146	59210	14.926	ug/L	98
65) 1,4-Dichlorobenzene	11.207	146	281066	65.832	ug/L	98
67) 1,2-Dichlorobenzene	11.580	146	685149	165.938	ug/L	99
69) 1,3,5-Trichlorobenzene	13.197	180	70401	25.662	ug/L	99
70) 1,2,4-trichlorobenzene	13.197	180	70401	29.356	ug/L	99
72) 1,2,3-Trichlorobenzene	13.680	180	29404	12.535	ug/L	99

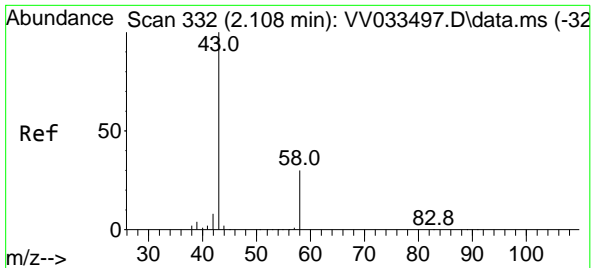
(#) = qualifier out of range (m) = manual integration (+) = signals summed

Data Path : Z:\voasrv\HPCHEM1\MSVOA\_V\Data\VV122023\  
 Data File : VV033505.D  
 Acq On : 20 Dec 2023 12:37  
 Operator : SY/MD  
 Sample : 05850-02  
 Misc : 5.0mL/MSVOA\_V/WATER  
 ALS Vial : 10 Sample Multiplier: 1

Instrument :  
 MSVOA\_V  
 ClientSampleId :

Quant Time: Dec 21 01:46:12 2023  
 Quant Method : Z:\voasrv\HPCHEM1\MSVOA\_V\Method\SFAMVLM121523WMA.M  
 Quant Title : VOC Analysis  
 QLast Update : Thu Dec 21 01:43:54 2023  
 Response via : Initial Calibration

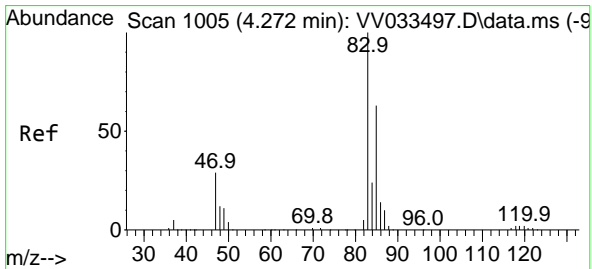
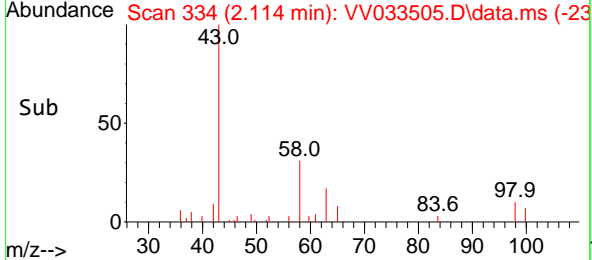
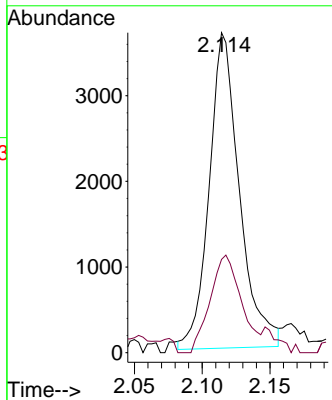
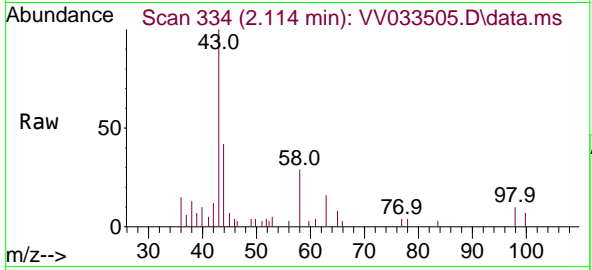




#13  
 Acetone  
 Concen: 4.419 ug/L  
 RT: 2.114 min Scan# 31  
 Delta R.T. 0.006 min  
 Lab File: VV033505.D  
 Acq: 20 Dec 2023 12:37

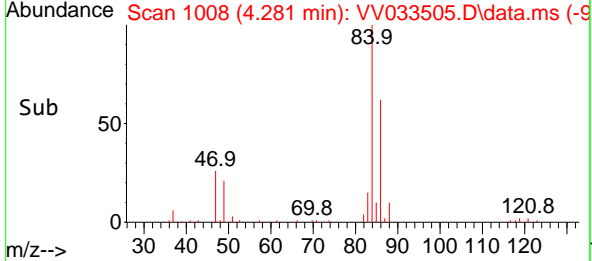
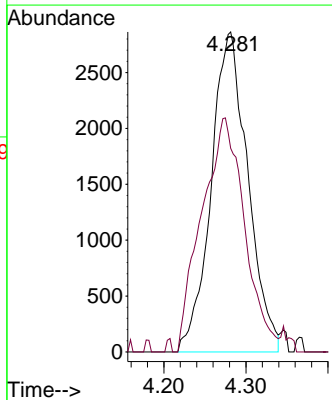
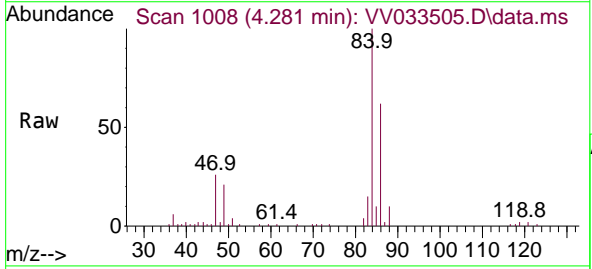
Instrument : MSVOA\_V  
 ClientSampleId :

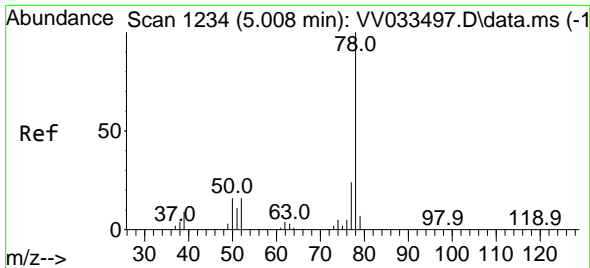
Tgt Ion: 43 Resp: 5716  
 Ion Ratio Lower Upper  
 43 100  
 58 32.1 0.0 59.2



#25  
 Chloroform  
 Concen: 2.159 ug/L  
 RT: 4.281 min Scan# 1008  
 Delta R.T. 0.010 min  
 Lab File: VV033505.D  
 Acq: 20 Dec 2023 12:37

Tgt Ion: 83 Resp: 8907  
 Ion Ratio Lower Upper  
 83 100  
 85 63.6 46.1 85.7

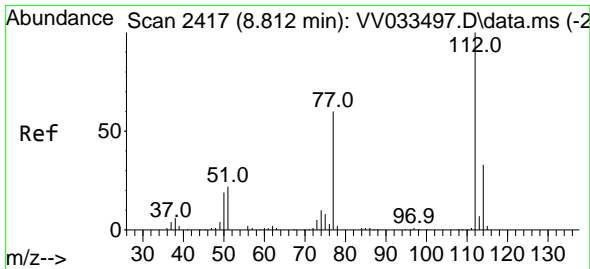
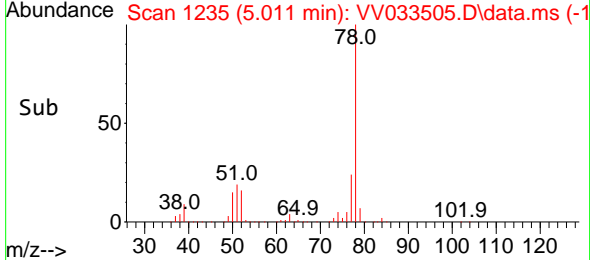
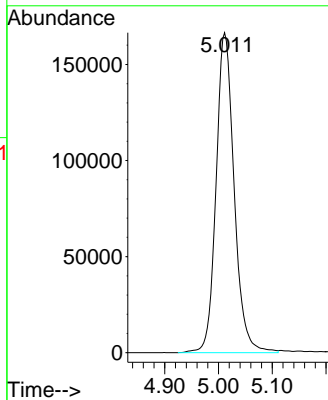
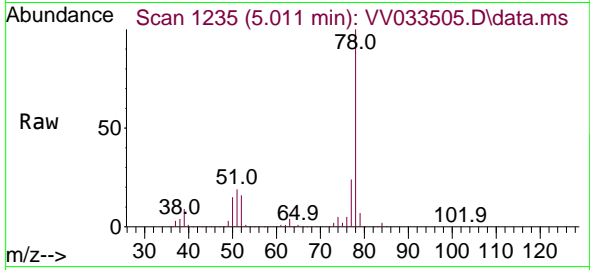




#33  
Benzene  
Concen: 49.421 ug/L  
RT: 5.011 min Scan# 11  
Delta R.T. 0.003 min  
Lab File: VV033505.D  
Acq: 20 Dec 2023 12:37

Tgt Ion: 78 Resp: 388678

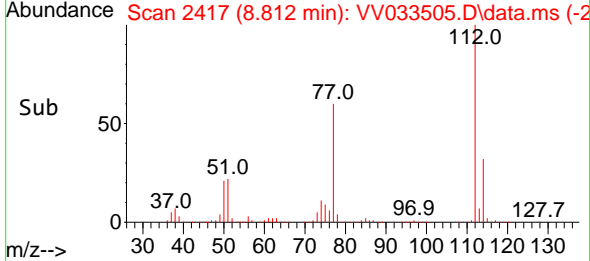
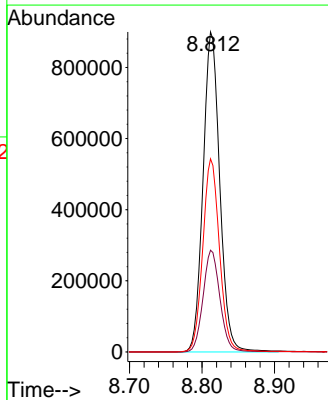
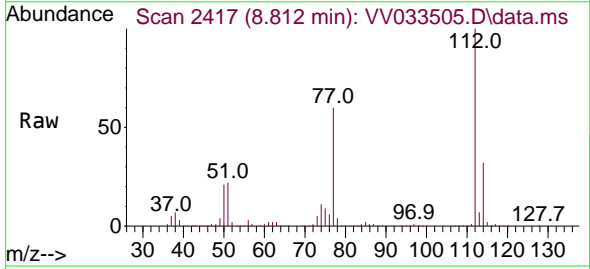
Instrument :  
MSVOA\_V  
ClientSampleId :

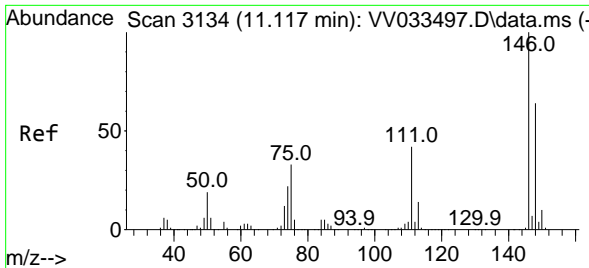


#51  
Chlorobenzene  
Concen: 240.846 ug/L  
RT: 8.812 min Scan# 2417  
Delta R.T. -0.000 min  
Lab File: VV033505.D  
Acq: 20 Dec 2023 12:37

Tgt Ion:112 Resp: 1446852

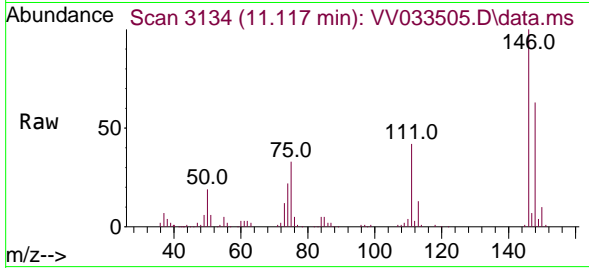
Ion	Ratio	Lower	Upper
112	100		
114	31.8	22.5	41.7
77	60.3	45.2	67.8



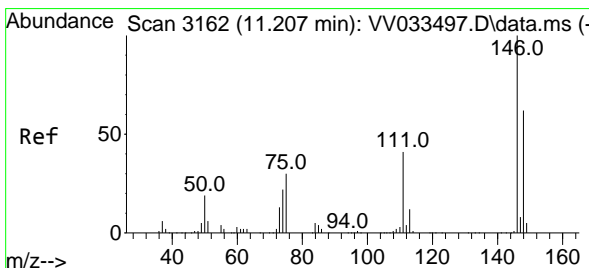
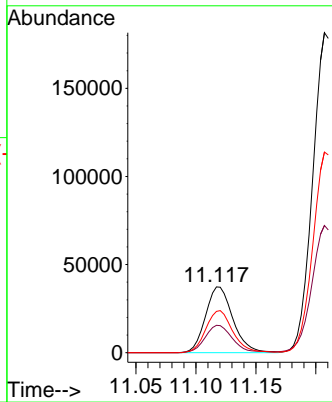
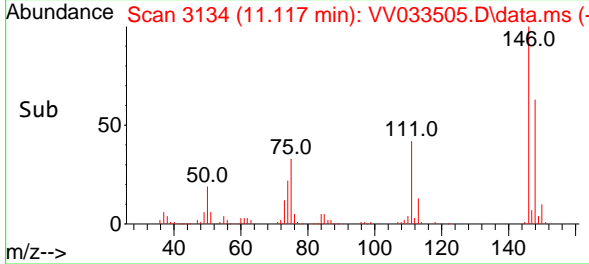


#64  
 1,3-Dichlorobenzene  
 Concen: 14.926 ug/L  
 RT: 11.117 min Scan# 3113  
 Delta R.T. -0.000 min  
 Lab File: VV033505.D  
 Acq: 20 Dec 2023 12:37

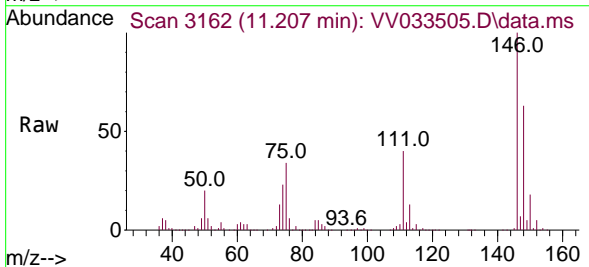
Instrument : MSVOA\_V  
 ClientSampleId :



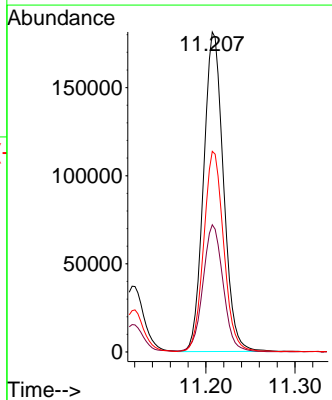
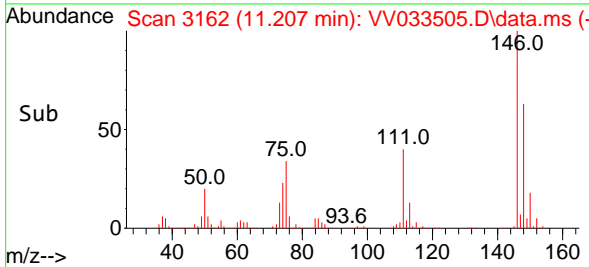
Tgt Ion:146 Resp: 59210  
 Ion Ratio Lower Upper  
 146 100  
 111 41.7 29.3 54.5  
 148 62.8 45.4 84.4

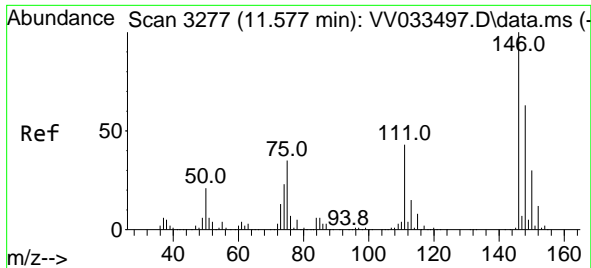


#65  
 1,4-Dichlorobenzene  
 Concen: 65.832 ug/L  
 RT: 11.207 min Scan# 3162  
 Delta R.T. -0.000 min  
 Lab File: VV033505.D  
 Acq: 20 Dec 2023 12:37



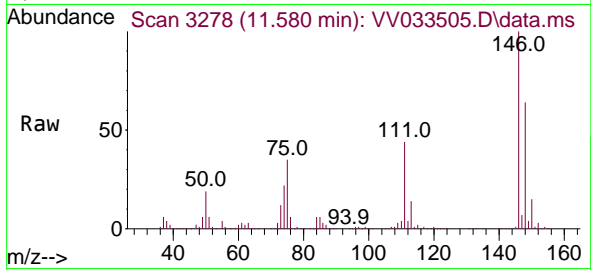
Tgt Ion:146 Resp: 281066  
 Ion Ratio Lower Upper  
 146 100  
 111 39.7 27.9 51.7  
 148 62.7 45.5 84.5



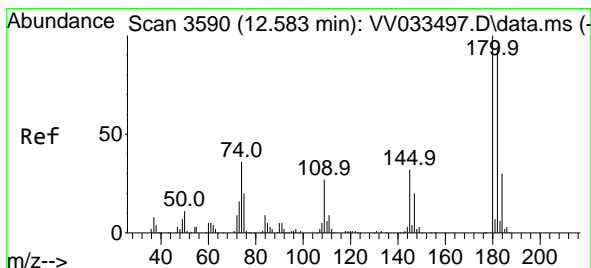
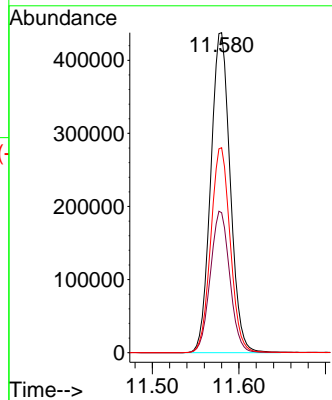
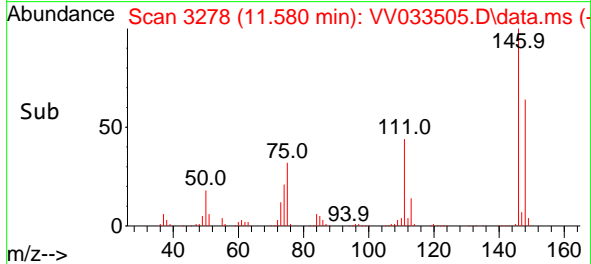


#67  
 1,2-Dichlorobenzene  
 Concen: 165.938 ug/L  
 RT: 11.580 min Scan# 31  
 Delta R.T. 0.003 min  
 Lab File: VV033505.D  
 Acq: 20 Dec 2023 12:37

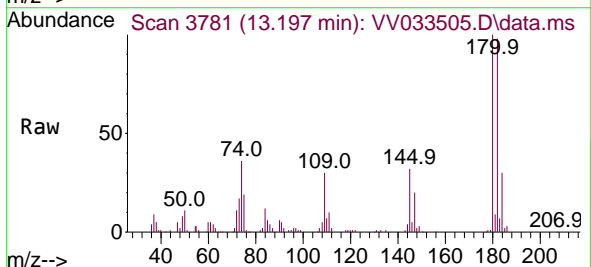
Instrument :  
 MSVOA\_V  
 ClientSampleId :



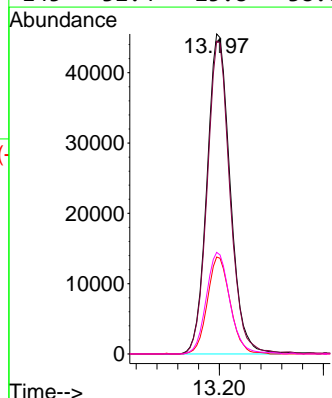
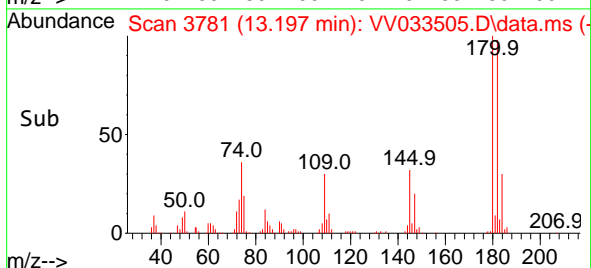
Tgt Ion:146 Resp: 685149  
 Ion Ratio Lower Upper  
 146 100  
 111 43.8 33.5 50.3  
 148 64.0 51.1 76.7

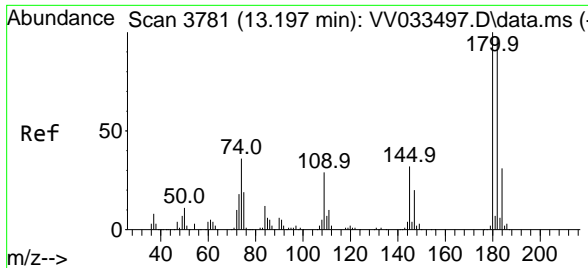


#69  
 1,3,5-Trichlorobenzene  
 Concen: 25.662 ug/L  
 RT: 13.197 min Scan# 3781  
 Delta R.T. 0.614 min  
 Lab File: VV033505.D  
 Acq: 20 Dec 2023 12:37



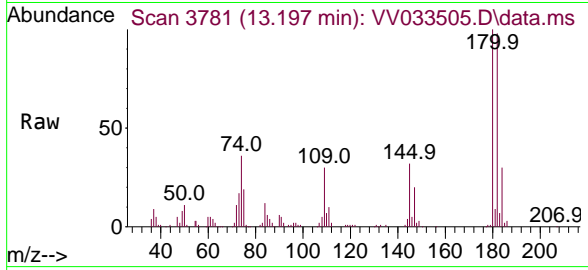
Tgt Ion:180 Resp: 70401  
 Ion Ratio Lower Upper  
 180 100  
 182 96.1 76.2 114.4  
 184 29.7 24.4 36.6  
 145 32.4 25.8 38.6



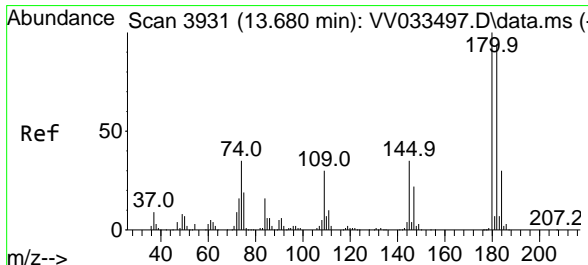
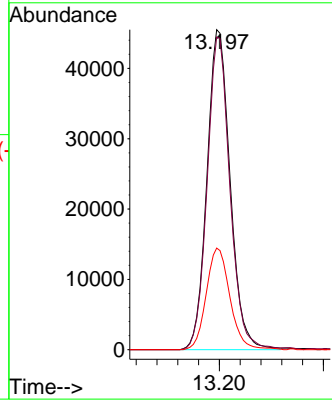
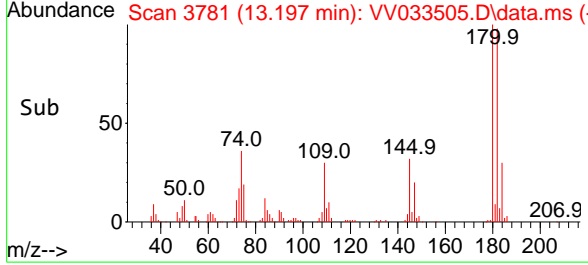


#70  
 1,2,4-trichlorobenzene  
 Concen: 29.356 ug/L  
 RT: 13.197 min Scan# 31  
 Delta R.T. -0.000 min  
 Lab File: VV033505.D  
 Acq: 20 Dec 2023 12:37

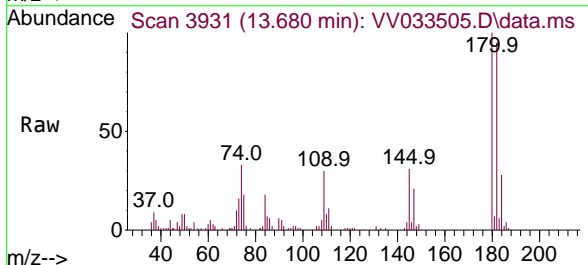
Instrument :  
 MSVOA\_V  
 ClientSampleId :



Tgt Ion:180 Resp: 70401  
 Ion Ratio Lower Upper  
 180 100  
 182 96.1 76.1 114.1  
 145 32.4 25.6 38.4



#72  
 1,2,3-Trichlorobenzene  
 Concen: 12.535 ug/L  
 RT: 13.680 min Scan# 3931  
 Delta R.T. -0.000 min  
 Lab File: VV033505.D  
 Acq: 20 Dec 2023 12:37



Tgt Ion:180 Resp: 29404  
 Ion Ratio Lower Upper  
 180 100  
 182 94.1 76.2 114.2  
 145 34.0 27.1 40.7

