

Data Path : Z:\voasrv\HPCHEM1\MSVOA\_V\Data\VW122023\  
 Data File : VV033517.D  
 Acq On : 20 Dec 2023 17:14  
 Operator : SY/MD  
 Sample : 05927-11  
 Misc : 5.0mL/MSVOA\_V/WATER  
 ALS Vial : 22 Sample Multiplier: 1

Instrument :  
 MSVOA\_V  
 ClientSampleId :  
 BH3D4

Quant Time: Dec 21 01:49:01 2023  
 Quant Method : Z:\voasrv\HPCHEM1\MSVOA\_V\Method\SFAMVLM121523WMA.M  
 Quant Title : VOC Analysis  
 QLast Update : Thu Dec 21 01:43:54 2023  
 Response via : Initial Calibration

Compound	R.T.	QIon	Response	Conc	Units	Dev(Min)
Internal Standards						
1) 1,4-Difluorobenzene	5.558	114	80	50.000	ug/L	# 0.03
28) Chlorobenzene-d5	8.802	117	1875	50.000	ug/L	# 0.02
58) 1,4-Dichlorobenzene-d4	11.194	152	2248	50.000	ug/L	0.00
System Monitoring Compounds						
4) Vinyl Chloride-d3	1.481	65	126	204.522	ug/L	0.20
Spiked Amount	50.000	Range 60 - 135	Recovery	=	409.040%#	
7) Chloroethane-d5	1.535	69	211	381.643	ug/L	0.00
Spiked Amount	50.000	Range 70 - 130	Recovery	=	763.280%#	
11) 1,1-Dichloroethene-d2	2.063	65	241	785.840	ug/L	0.00
Spiked Amount	50.000	Range 60 - 125	Recovery	=	1571.680%#	
21) 2-Butanone-d5	3.776	46	90	289.861	ug/L	0.00
Spiked Amount	100.000	Range 40 - 130	Recovery	=	289.860%#	
24) Chloroform-d	4.249	84	159	130.472	ug/L	0.00
Spiked Amount	50.000	Range 70 - 125	Recovery	=	260.940%#	
26) 1,2-Dichloroethane-d4	4.953	65	199	265.820	ug/L	0.02
Spiked Amount	50.000	Range 70 - 125	Recovery	=	531.640%#	
32) Benzene-d6	4.989	84	678	13.426	ug/L	0.03
Spiked Amount	50.000	Range 70 - 125	Recovery	=	26.860%#	
36) 1,2-Dichloropropane-d6	5.976	67	65	4.241	ug/L	0.00
Spiked Amount	50.000	Range 70 - 120	Recovery	=	8.480%#	
41) Toluene-d8	7.265	98	466	10.085	ug/L	0.03
Spiked Amount	50.000	Range 80 - 120	Recovery	=	20.160%#	
43) trans-1,3-Dichloroprop...	7.606	79	168	22.366	ug/L	0.05
Spiked Amount	50.000	Range 60 - 125	Recovery	=	44.740%#	
47) 2-Hexanone-d5	8.069	63	69	13.385	ug/L	0.05
Spiked Amount	100.000	Range 45 - 130	Recovery	=	13.380%#	
56) 1,1,2,2-Tetrachloroeth...	10.165	84	832	37.769	ug/L	0.02
Spiked Amount	50.000	Range 65 - 120	Recovery	=	75.540%	
66) 1,2-Dichlorobenzene-d4	11.570	152	2015	47.700	ug/L	0.00
Spiked Amount	50.000	Range 80 - 120	Recovery	=	95.400%	
Target Compounds						
3) Chloromethane	1.220	50	163	269.378	ug/L	# 40
5) Vinyl chloride	1.285	62	1381	2128.941	ug/L	91
6) Bromomethane	1.445	94	44	94.758	ug/L	91
8) Chloroethane	1.339	64	1475	3368.197	ug/L	# 63
10) 1,1,2-Trichloro-1,2,2-...	2.101	101	48	72.331	ug/L	# 1
12) 1,1-Dichloroethene	2.072	96	363	643.902	ug/L	89
13) Acetone	2.121	43	547	1517.703	ug/L	80
14) Carbon disulfide	2.249	76	663	460.212	ug/L	# 74
15) Methyl Acetate	2.178	43	213	413.809	ug/L	91
16) Methylene chloride	2.452	84	194	308.119	ug/L	# 27
17) trans-1,2-Dichloroethene	2.696	96	40	75.066	ug/L	# 80
18) Methyl tert-butyl Ether	2.645	73	42	25.955	ug/L	# 1
19) 1,1-Dichloroethane	3.124	63	1566	1533.373	ug/L	# 92
20) cis-1,2-Dichloroethene	3.821	96	24412	40406.077	ug/L	91
22) 2-Butanone	3.860	43	88	247.829	ug/L	# 50
25) Chloroform	4.497	83	44	38.284	ug/L	# 17
27) 1,2-Dichloroethane	5.011	62	91	102.718	ug/L	# 73
29) Cyclohexane	4.577	56	64	3.787	ug/L	# 13
30) 1,1,1-Trichloroethane	4.522	97	145	6.264	ug/L	# 34

Data Path : Z:\voasrv\HPCHEM1\MSVOA\_V\Data\VW122023\  
 Data File : VV033517.D  
 Acq On : 20 Dec 2023 17:14  
 Operator : SY/MD  
 Sample : 05927-11  
 Misc : 5.0mL/MSVOA\_V/WATER  
 ALS Vial : 22 Sample Multiplier: 1

Instrument :  
 MSVOA\_V  
 ClientSampleId :  
 BH3D4

Quant Time: Dec 21 01:49:01 2023  
 Quant Method : Z:\voasrv\HPCHEM1\MSVOA\_V\Method\SFAMVLM121523WMA.M  
 Quant Title : VOC Analysis  
 QLast Update : Thu Dec 21 01:43:54 2023  
 Response via : Initial Calibration

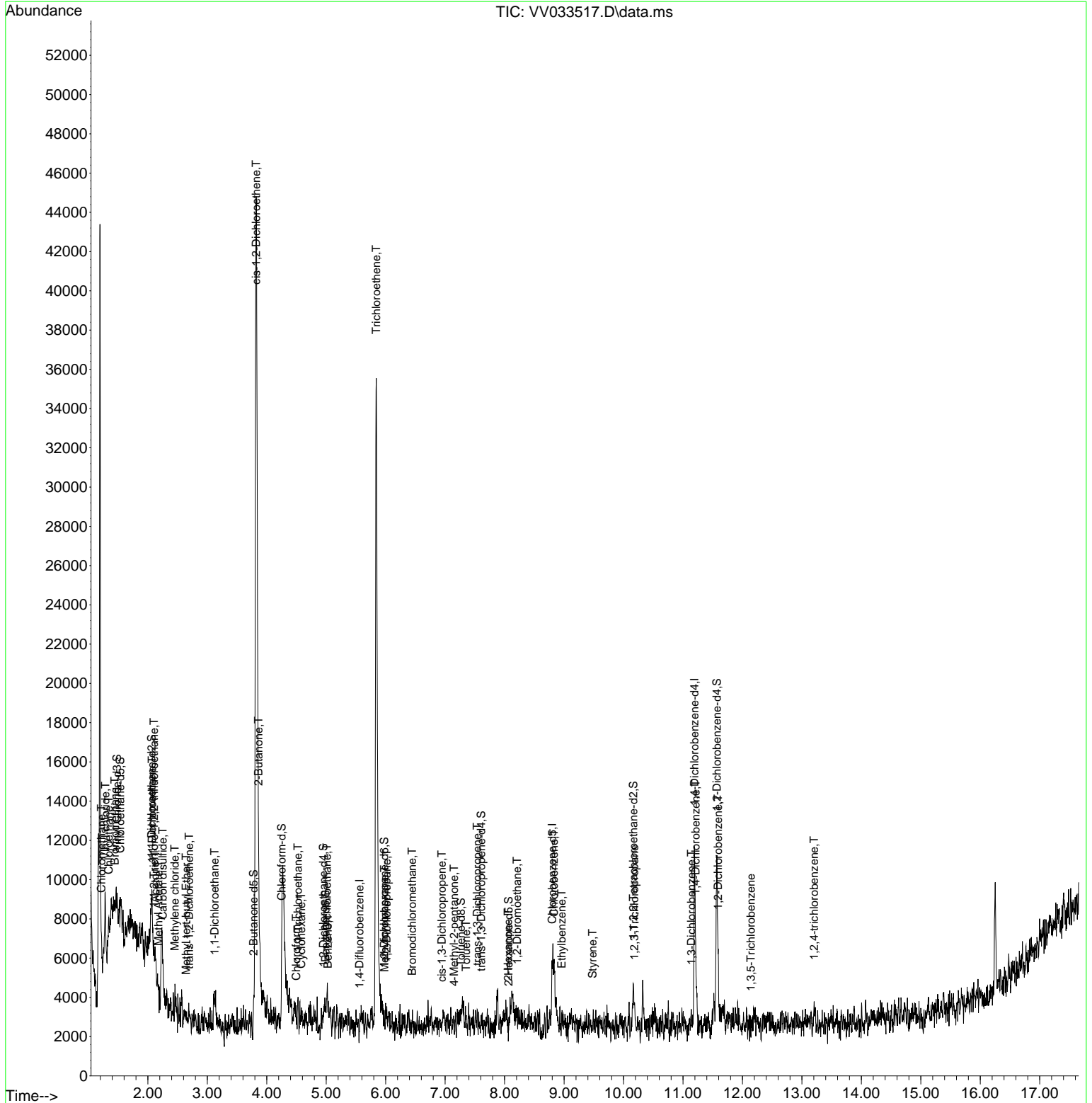
Compound	R.T.	QIon	Response	Conc	Units	Dev(Min)
33) Benzene	5.027	78	457	9.144	ug/L	100
34) Trichloroethene	5.841	95	11784	859.473	ug/L	96
35) Methylcyclohexane	5.979	83	42	2.136	ug/L #	53
37) 1,2-Dichloropropane	6.018	63	119	8.780	ug/L #	86
38) Bromodichloromethane	6.442	83	42	2.153	ug/L #	25
39) cis-1,3-Dichloropropene	6.944	75	50	2.536	ug/L #	43
40) 4-Methyl-2-pentanone	7.149	43	140	9.680	ug/L #	44
42) Toluene	7.355	91	112	2.114	ug/L #	21
44) trans-1,3-Dichloropropene	7.542	75	40	2.022	ug/L #	43
48) 2-Hexanone	8.059	43	94	7.792	ug/L #	39
50) 1,2-Dibromoethane	8.210	107	64	4.395	ug/L #	7
51) Chlorobenzene	8.828	112	1420	37.199	ug/L #	76
52) Ethylbenzene	8.960	91	43	0.729	ug/L #	44
55) Styrene	9.480	104	47	1.237	ug/L #	33
61) 1,2,3-Trichloropropane	10.181	75	90	2.498	ug/L #	13
64) 1,3-Dichlorobenzene	11.140	146	91	1.372	ug/L #	24
65) 1,4-Dichlorobenzene	11.213	146	236	3.305	ug/L #	81
67) 1,2-Dichlorobenzene	11.590	146	375	5.430	ug/L #	61
69) 1,3,5-Trichlorobenzene	12.139	180	41	0.894	ug/L #	18
70) 1,2,4-trichlorobenzene	13.204	180	198	4.937	ug/L #	62

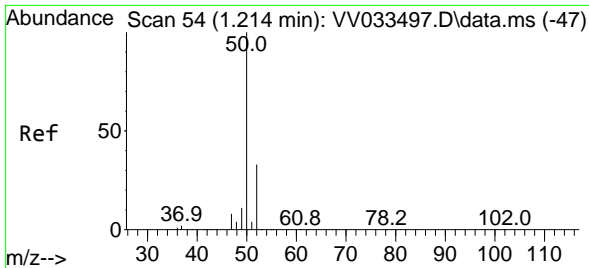
(#) = qualifier out of range (m) = manual integration (+) = signals summed

Data Path : Z:\voasrv\HPCHEM1\MSVOA\_V\Data\VV122023\  
 Data File : VV033517.D  
 Acq On : 20 Dec 2023 17:14  
 Operator : SY/MD  
 Sample : 05927-11  
 Misc : 5.0mL/MSVOA\_V/WATER  
 ALS Vial : 22 Sample Multiplier: 1

Instrument :  
 MSVOA\_V  
 ClientSampleId :  
 BH3D4

Quant Time: Dec 21 01:49:01 2023  
 Quant Method : Z:\voasrv\HPCHEM1\MSVOA\_V\Method\SFAMVLM121523WMA.M  
 Quant Title : VOC Analysis  
 QLast Update : Thu Dec 21 01:43:54 2023  
 Response via : Initial Calibration

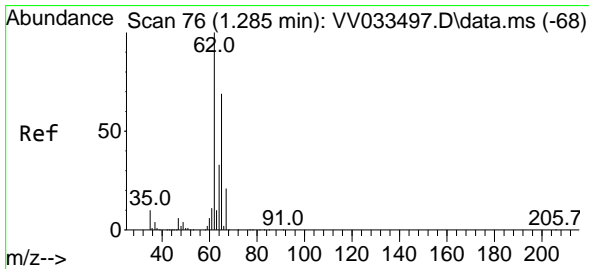
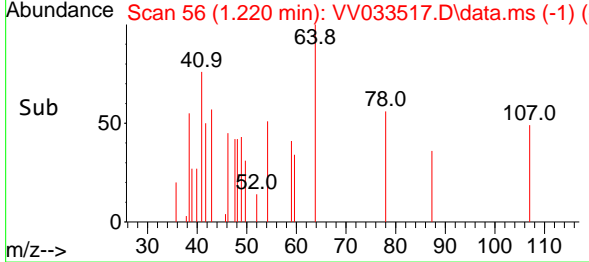
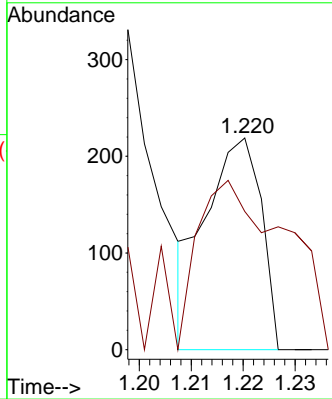
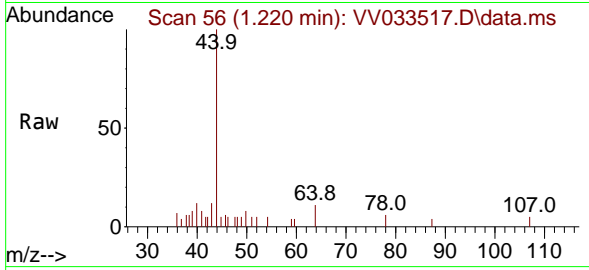




#3  
 Chloromethane  
 Concen: 269.378 ug/L  
 RT: 1.220 min Scan# 50  
 Delta R.T. 0.006 min  
 Lab File: VV033517.D  
 Acq: 20 Dec 2023 17:14

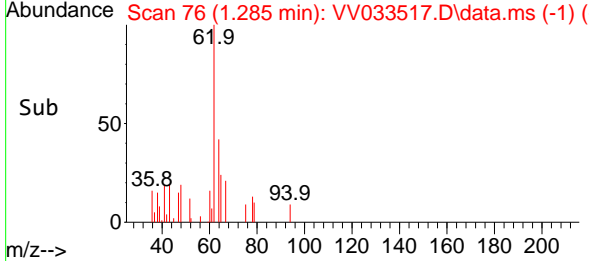
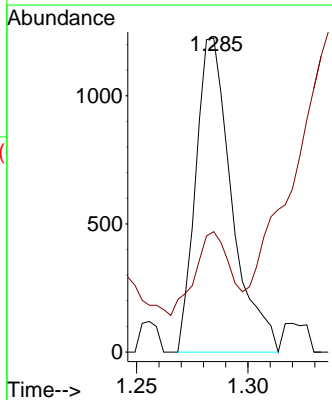
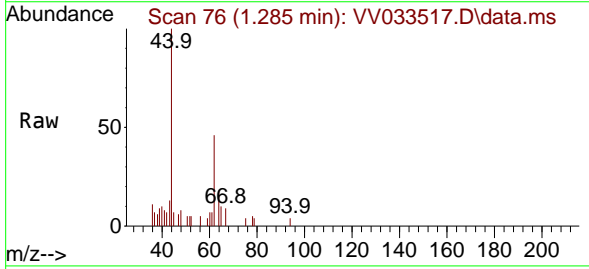
Instrument : MSVOA\_V  
 ClientSampleId : BH3D4

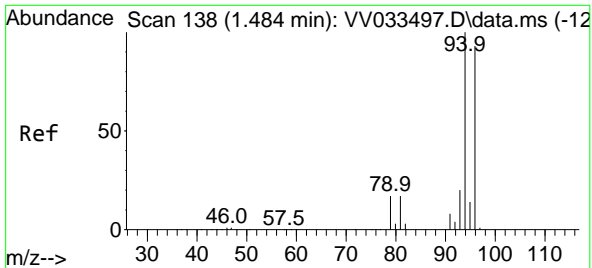
Tgt Ion: 50 Resp: 163  
 Ion Ratio Lower Upper  
 50 100  
 52 65.3 22.3 41.5#



#5  
 Vinyl chloride  
 Concen: 2128.941 ug/L  
 RT: 1.285 min Scan# 76  
 Delta R.T. -0.000 min  
 Lab File: VV033517.D  
 Acq: 20 Dec 2023 17:14

Tgt Ion: 62 Resp: 1381  
 Ion Ratio Lower Upper  
 62 100  
 64 38.4 23.4 43.6

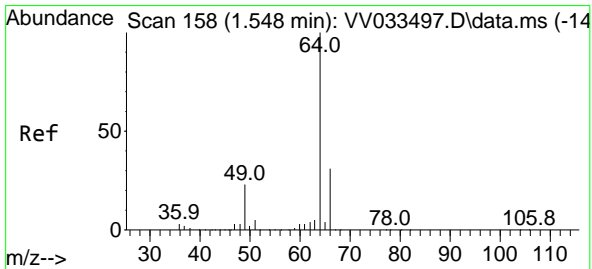
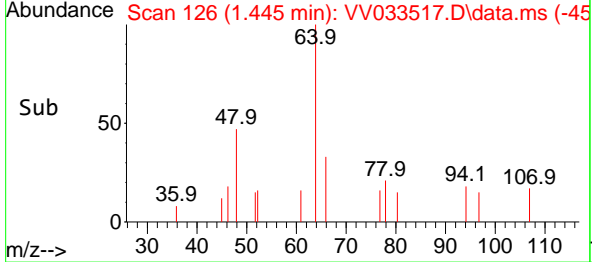
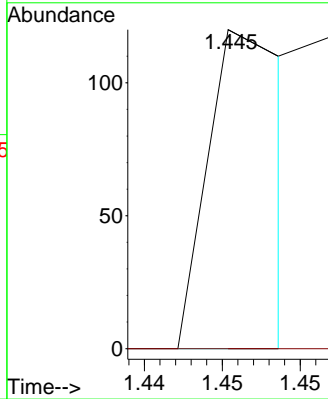
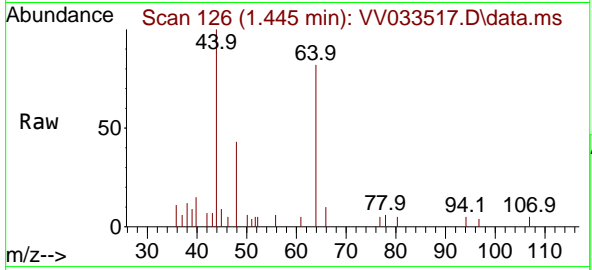




#6  
 Bromomethane  
 Concen: 94.758 ug/L  
 RT: 1.445 min Scan# 11  
 Delta R.T. -0.039 min  
 Lab File: VV033517.D  
 Acq: 20 Dec 2023 17:14

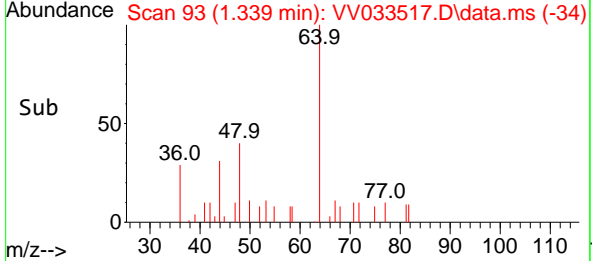
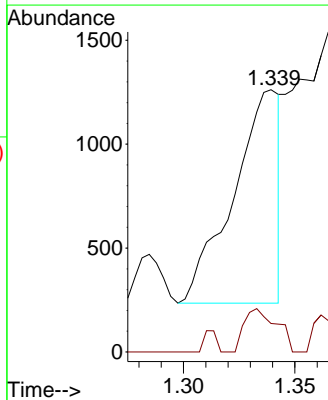
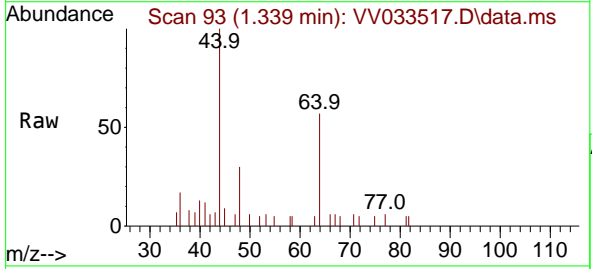
Instrument :  
 MSVOA\_V  
 ClientSampleId :  
 BH3D4

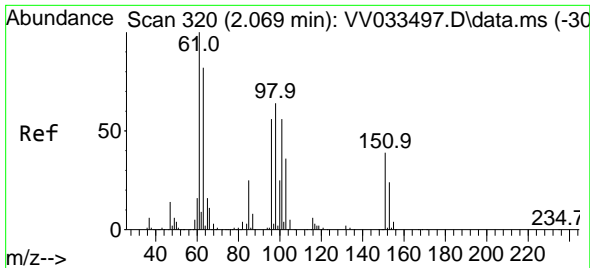
Tgt Ion: 94 Resp: 44  
 Ion Ratio Lower Upper  
 94 100  
 96 84.2 65.1 120.9



#8  
 Chloroethane  
 Concen: 3368.197 ug/L  
 RT: 1.339 min Scan# 93  
 Delta R.T. -0.209 min  
 Lab File: VV033517.D  
 Acq: 20 Dec 2023 17:14

Tgt Ion: 64 Resp: 1475  
 Ion Ratio Lower Upper  
 64 100  
 66 10.9 22.1 41.1#



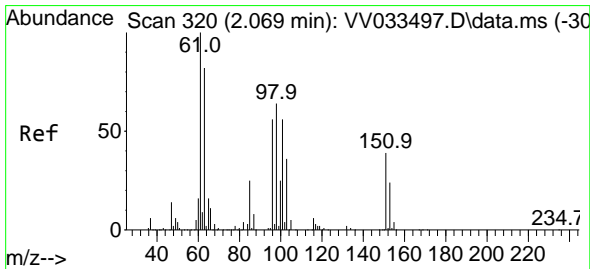
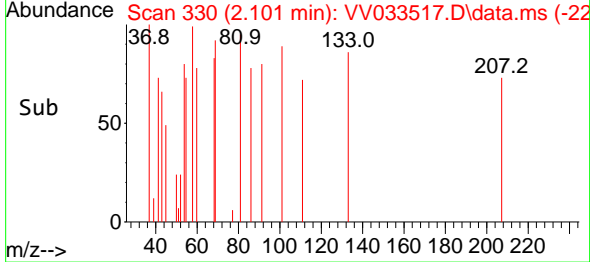
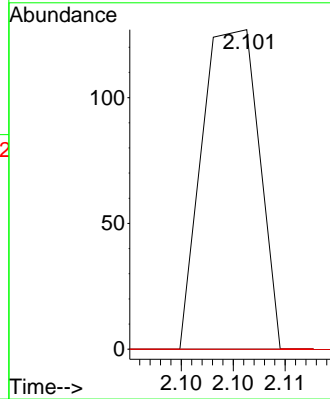
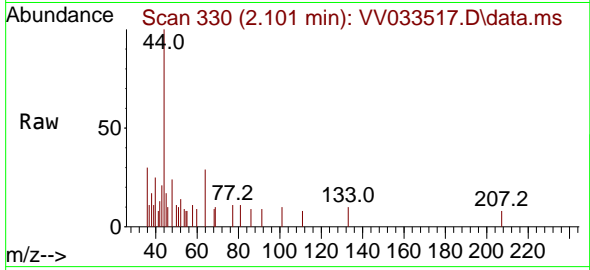


#10  
 1,1,2-Trichloro-1,2,2-trifluoroethane  
 Concen: 72.331 ug/L  
 RT: 2.101 min Scan# 31  
 Delta R.T. 0.032 min  
 Lab File: VV033517.D  
 Acq: 20 Dec 2023 17:14

Instrument :  
 MSVOA\_V  
 ClientSampleId :  
 BH3D4

Tgt Ion:101 Resp: 48

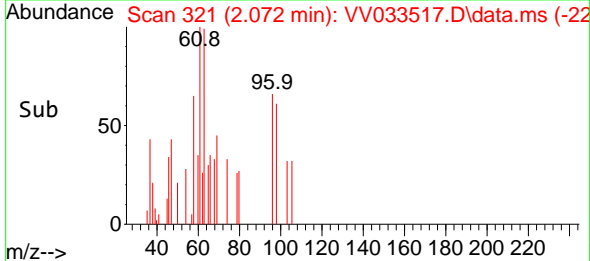
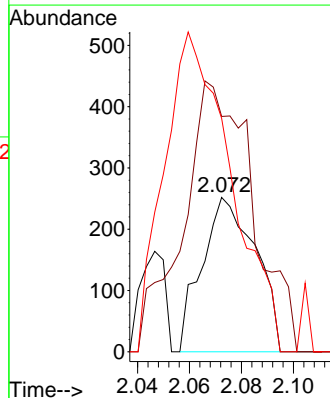
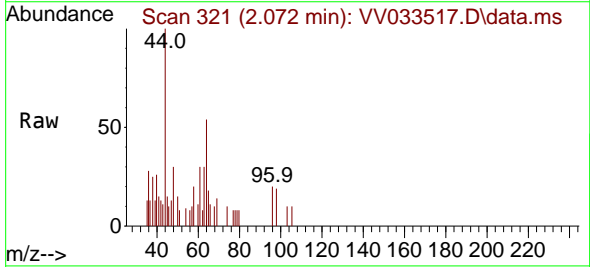
Ion	Ratio	Lower	Upper
101	100		
85	208.3	36.6	54.8#
151	0.0	57.0	85.6#

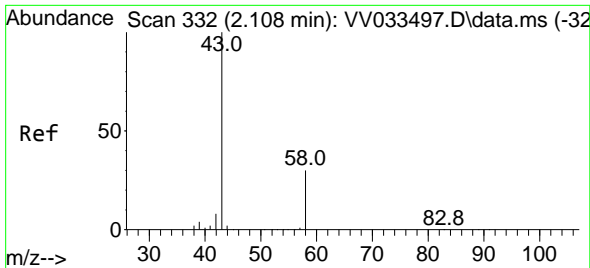


#12  
 1,1-Dichloroethene  
 Concen: 643.902 ug/L  
 RT: 2.072 min Scan# 321  
 Delta R.T. 0.003 min  
 Lab File: VV033517.D  
 Acq: 20 Dec 2023 17:14

Tgt Ion: 96 Resp: 363

Ion	Ratio	Lower	Upper
96	100		
61	152.4	124.3	230.8
63	151.2	108.1	200.7

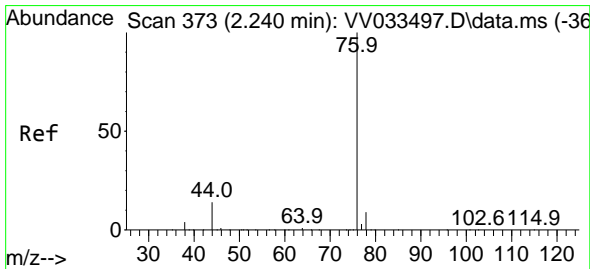
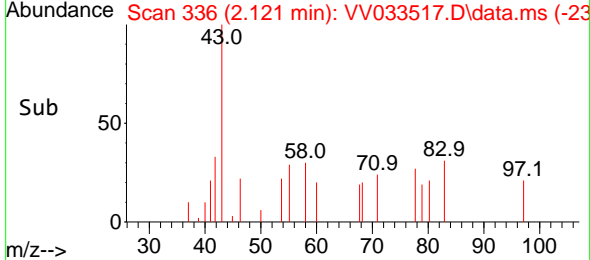
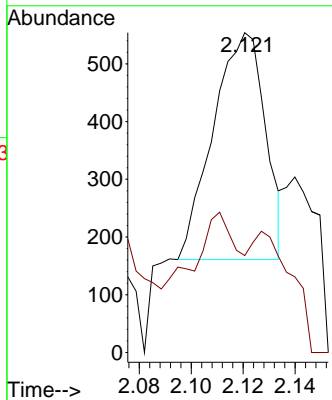
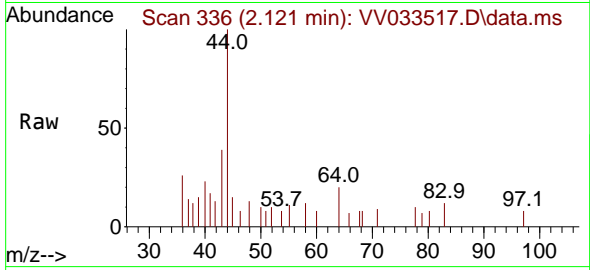




#13  
 Acetone  
 Concen: 1517.703 ug/L  
 RT: 2.121 min Scan# 311  
 Delta R.T. 0.013 min  
 Lab File: VV033517.D  
 Acq: 20 Dec 2023 17:14

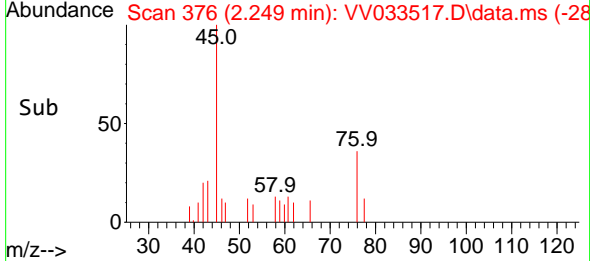
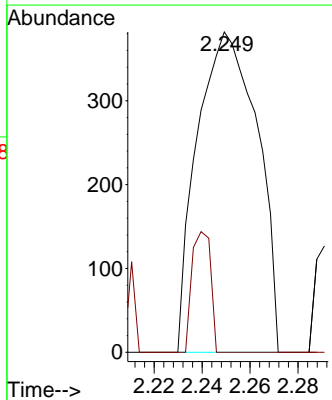
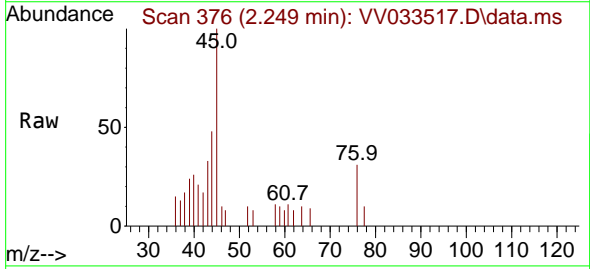
Instrument : MSVOA\_V  
 ClientSampleId : BH3D4

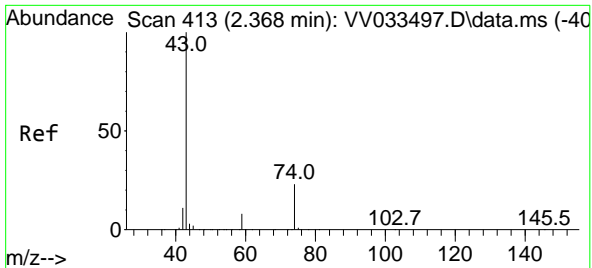
Tgt Ion: 43 Resp: 547  
 Ion Ratio Lower Upper  
 43 100  
 58 40.6 0.0 59.2



#14  
 Carbon disulfide  
 Concen: 460.212 ug/L  
 RT: 2.249 min Scan# 376  
 Delta R.T. 0.009 min  
 Lab File: VV033517.D  
 Acq: 20 Dec 2023 17:14

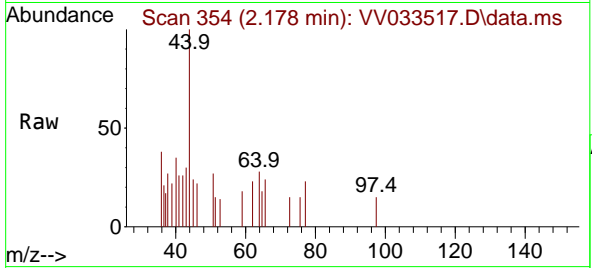
Tgt Ion: 76 Resp: 663  
 Ion Ratio Lower Upper  
 76 100  
 78 0.0 7.6 11.4#



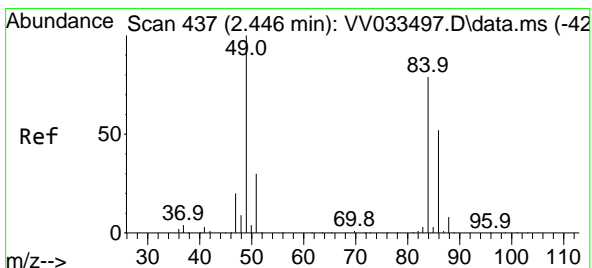
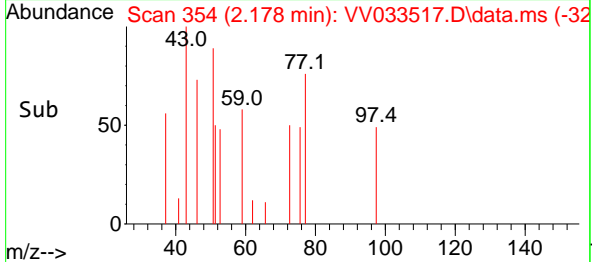
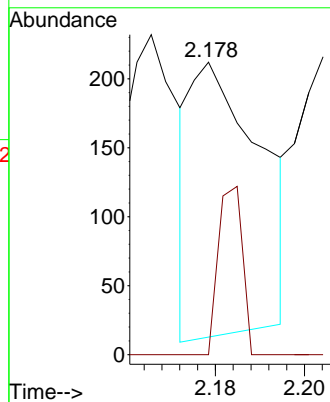


#15  
 Methyl Acetate  
 Concen: 413.809 ug/L  
 RT: 2.178 min Scan# 311  
 Delta R.T. -0.190 min  
 Lab File: VV033517.D  
 Acq: 20 Dec 2023 17:14

Instrument : MSVOA\_V  
 ClientSampleId : BH3D4

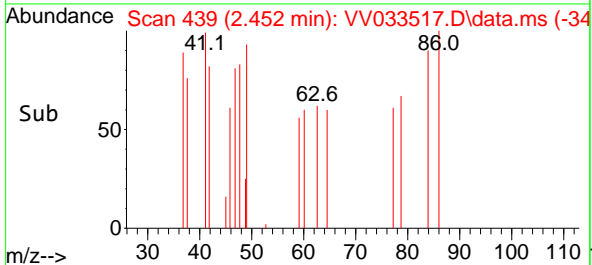
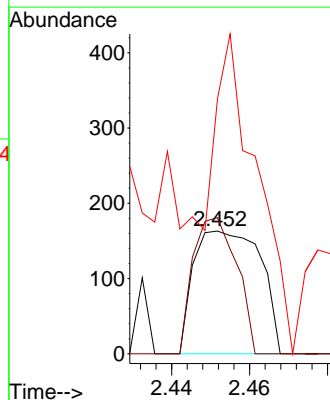
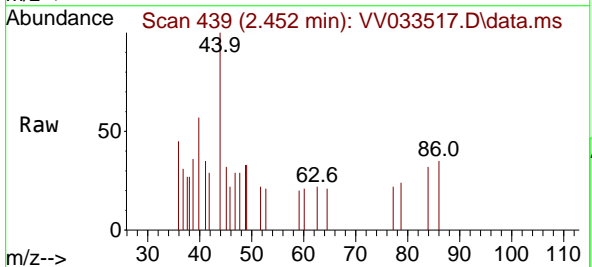


Tgt Ion: 43 Resp: 213  
 Ion Ratio Lower Upper  
 43 100  
 74 21.6 20.8 31.2

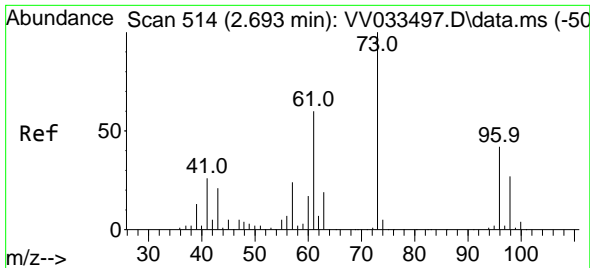


#16  
 Methylene chloride  
 Concen: 308.119 ug/L  
 RT: 2.452 min Scan# 439  
 Delta R.T. 0.006 min  
 Lab File: VV033517.D  
 Acq: 20 Dec 2023 17:14

Tgt Ion: 84 Resp: 194  
 Ion Ratio Lower Upper  
 84 100  
 86 111.0 45.4 84.2#  
 49 208.0 83.3 154.7#



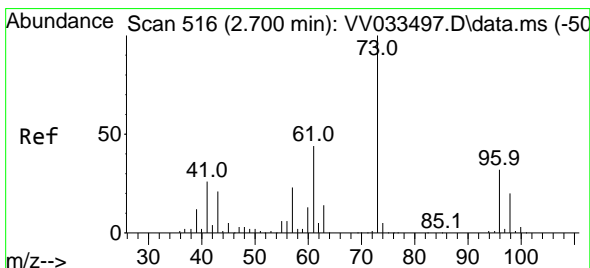
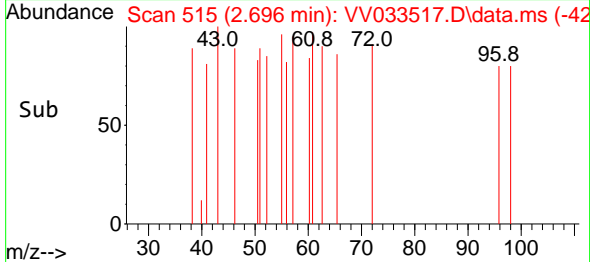
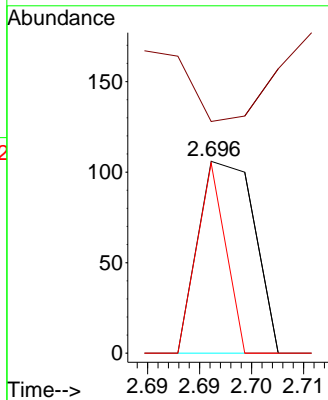
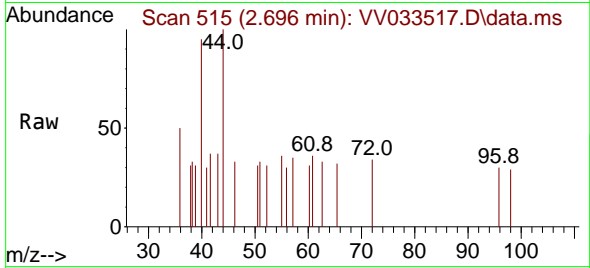




#17  
 trans-1,2-Dichloroethene  
 Concen: 75.066 ug/L  
 RT: 2.696 min Scan# 514  
 Delta R.T. 0.003 min  
 Lab File: VV033517.D  
 Acq: 20 Dec 2023 17:14

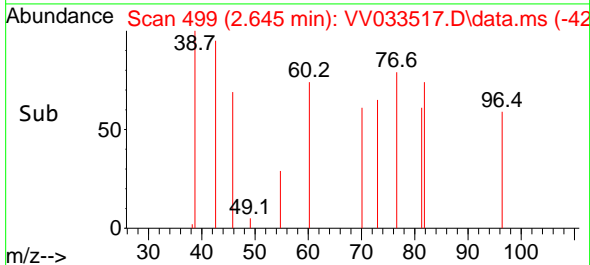
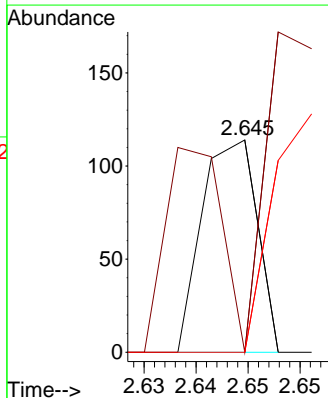
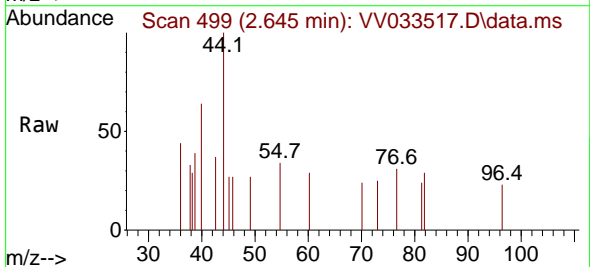
Instrument :  
 MSVOA\_V  
 ClientSampleId :  
 BH3D4

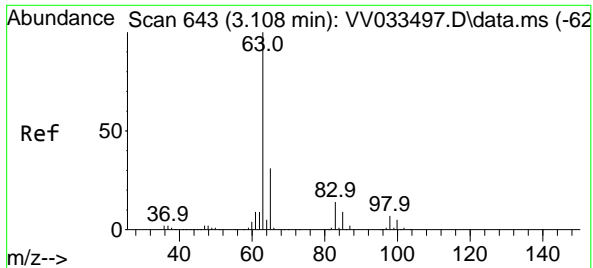
Tgt Ion	Resp	Lower	Upper
96	40		
96	100		
61	120.8	89.6	166.4
98	99.1	44.1	81.9#



#18  
 Methyl tert-butyl Ether  
 Concen: 25.955 ug/L  
 RT: 2.645 min Scan# 499  
 Delta R.T. -0.055 min  
 Lab File: VV033517.D  
 Acq: 20 Dec 2023 17:14

Tgt Ion	Resp	Lower	Upper
73	42		
73	100		
43	154.8	16.3	24.5#
57	266.7	17.3	25.9#

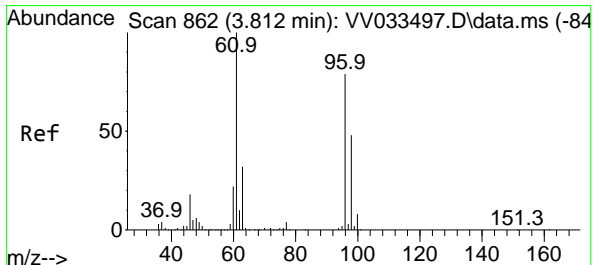
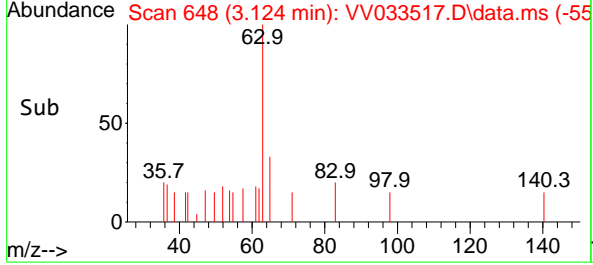
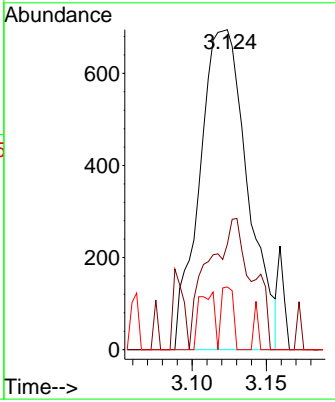
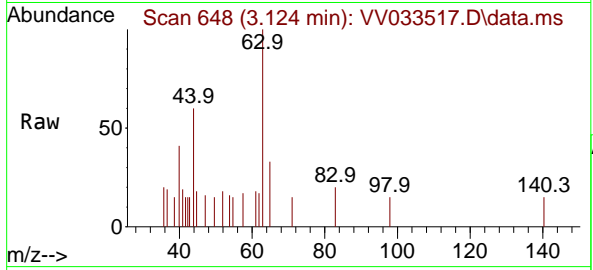




#19  
 1,1-Dichloroethane  
 Concen: 1533.373 ug/L  
 RT: 3.124 min Scan# 648  
 Delta R.T. 0.016 min  
 Lab File: VV033517.D  
 Acq: 20 Dec 2023 17:14

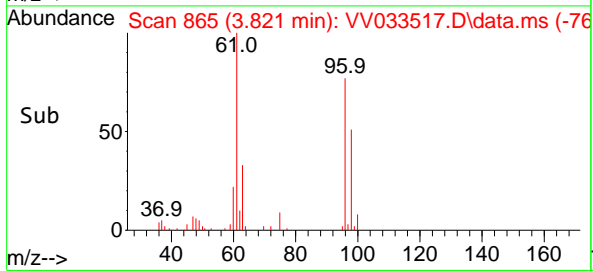
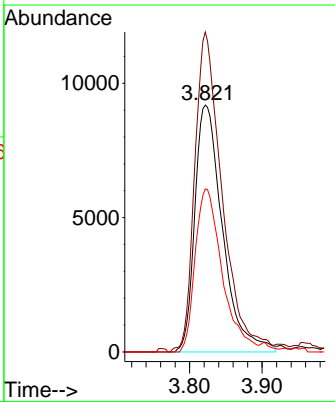
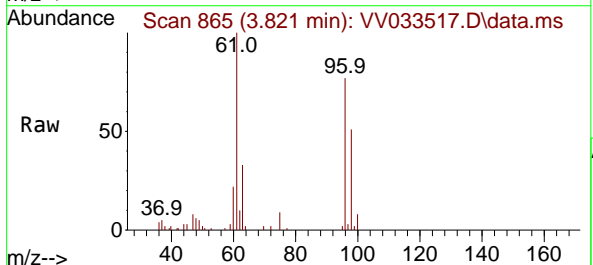
Instrument : MSVOA\_V  
 ClientSampleId : BH3D4

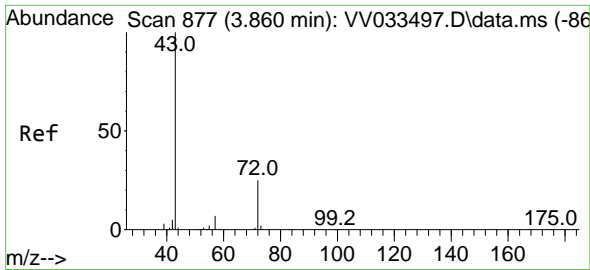
Tgt Ion	Resp	Lower	Upper
63	1566		
65	32.9	21.1	39.3
83	19.6	9.7	17.9



#20  
 cis-1,2-Dichloroethene  
 Concen: 40406.077 ug/L  
 RT: 3.821 min Scan# 865  
 Delta R.T. 0.009 min  
 Lab File: VV033517.D  
 Acq: 20 Dec 2023 17:14

Tgt Ion	Resp	Lower	Upper
96	24412		
61	129.6	81.9	152.1
98	66.0	44.3	82.3

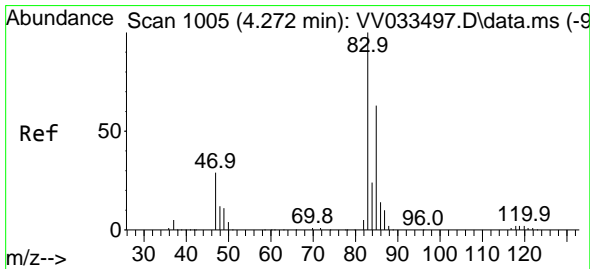
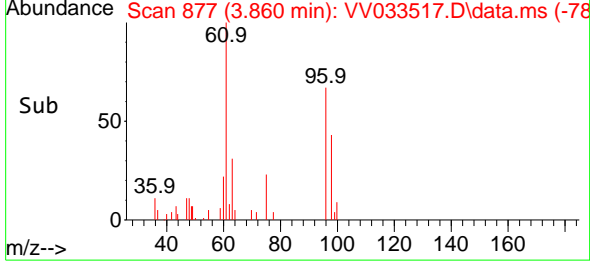
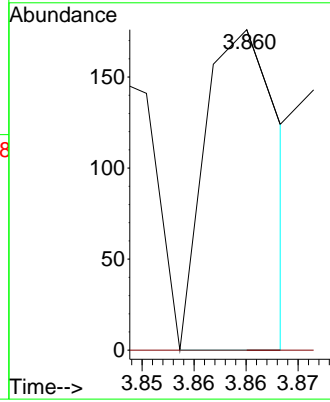
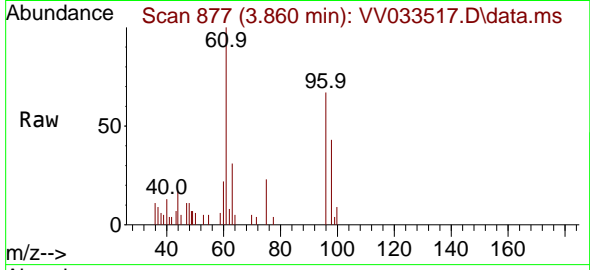




#22  
 2-Butanone  
 Concen: 247.829 ug/L  
 RT: 3.860 min Scan# 81  
 Delta R.T. -0.000 min  
 Lab File: VV033517.D  
 Acq: 20 Dec 2023 17:14

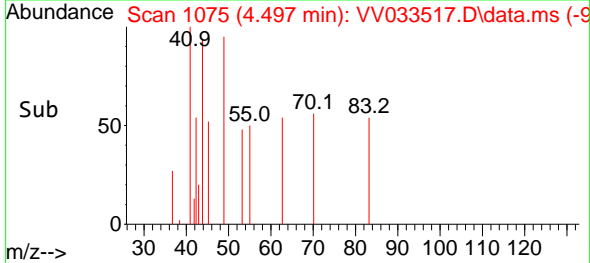
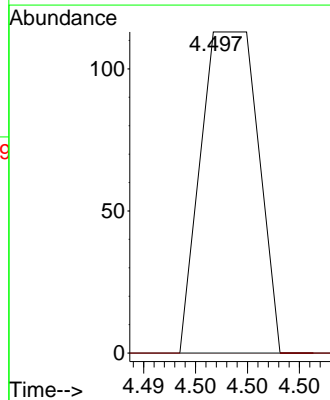
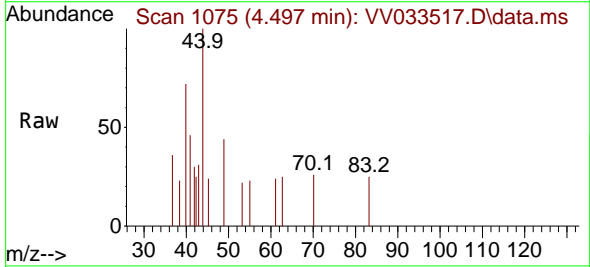
Instrument :  
 MSVOA\_V  
 ClientSampleId :  
 BH3D4

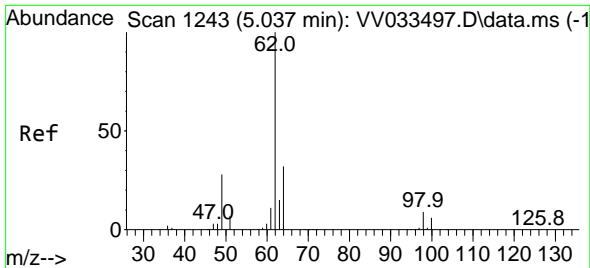
Tgt Ion: 43 Resp: 88  
 Ion Ratio Lower Upper  
 43 100  
 72 0.0 12.4 37.4#



#25  
 Chloroform  
 Concen: 38.284 ug/L  
 RT: 4.497 min Scan# 1075  
 Delta R.T. 0.225 min  
 Lab File: VV033517.D  
 Acq: 20 Dec 2023 17:14

Tgt Ion: 83 Resp: 44  
 Ion Ratio Lower Upper  
 83 100  
 85 0.0 46.1 85.7#

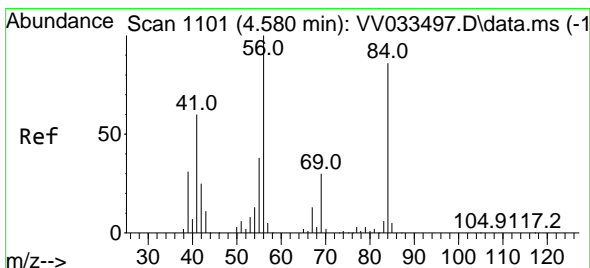
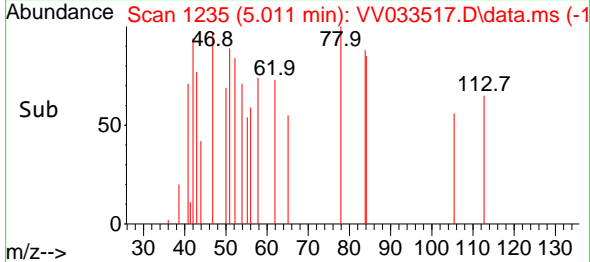
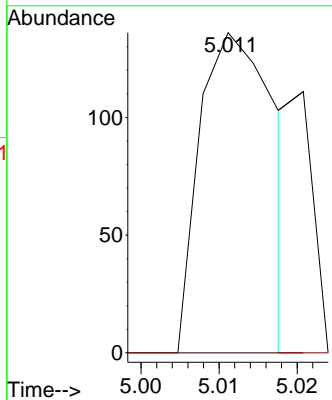
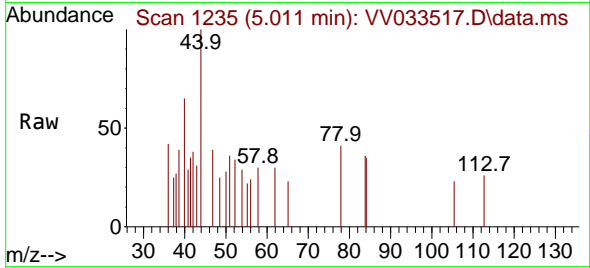




#27  
 1,2-Dichloroethane  
 Concen: 102.718 ug/L  
 RT: 5.011 min Scan# 1100  
 Delta R.T. -0.026 min  
 Lab File: VV033517.D  
 Acq: 20 Dec 2023 17:14

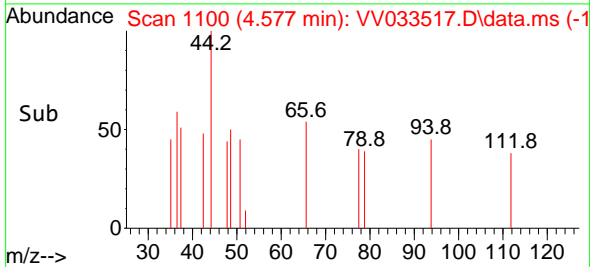
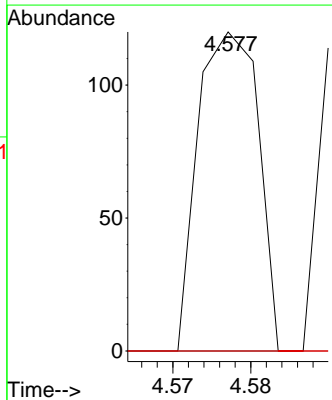
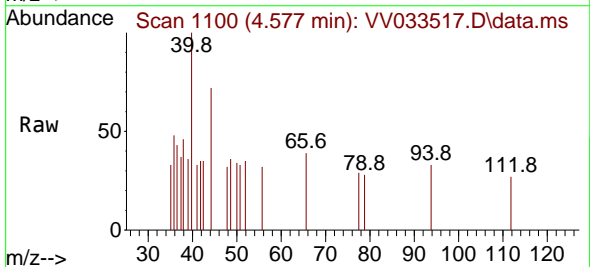
Instrument :  
 MSVOA\_V  
 ClientSampleId :  
 BH3D4

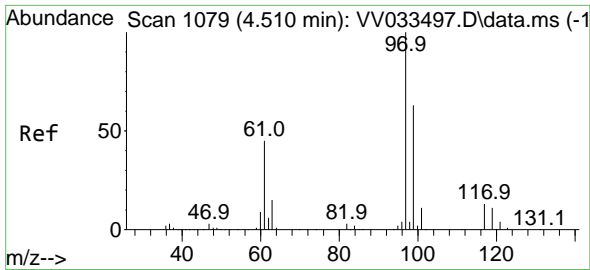
Tgt Ion: 62 Resp: 91  
 Ion Ratio Lower Upper  
 62 100  
 98 0.0 8.0 12.0#



#29  
 Cyclohexane  
 Concen: 3.787 ug/L  
 RT: 4.577 min Scan# 1100  
 Delta R.T. -0.003 min  
 Lab File: VV033517.D  
 Acq: 20 Dec 2023 17:14

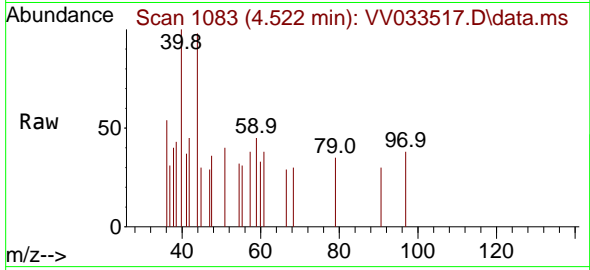
Tgt Ion: 56 Resp: 64  
 Ion Ratio Lower Upper  
 56 100  
 69 0.0 25.8 38.6#  
 84 0.0 75.2 112.8#



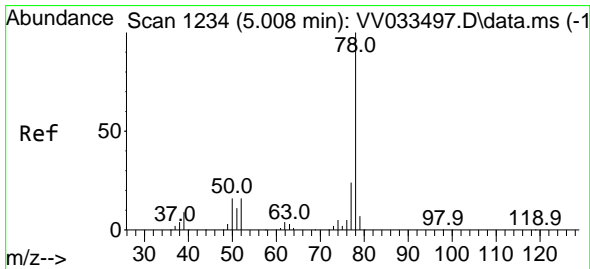
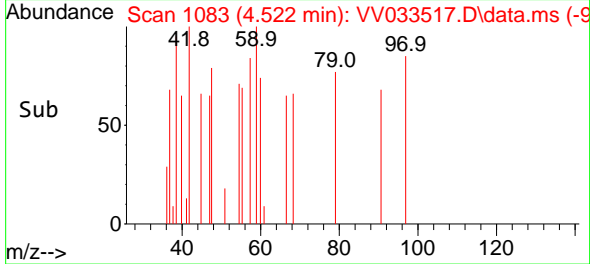
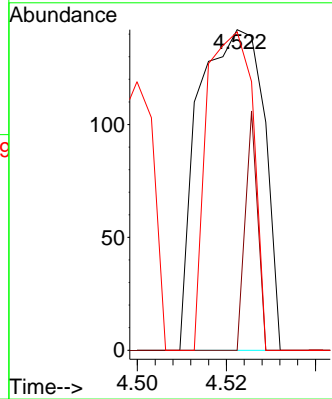


#30  
 1,1,1-Trichloroethane  
 Concen: 6.264 ug/L  
 RT: 4.522 min Scan# 1079  
 Delta R.T. 0.013 min  
 Lab File: VV033517.D  
 Acq: 20 Dec 2023 17:14

Instrument : MSVOA\_V  
 ClientSampleId : BH3D4

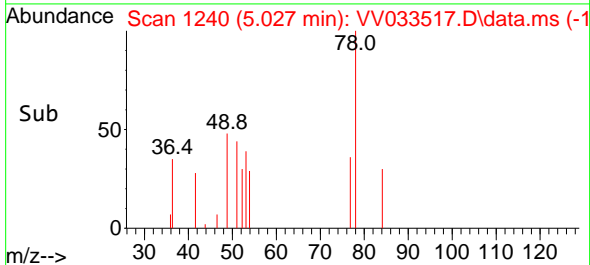
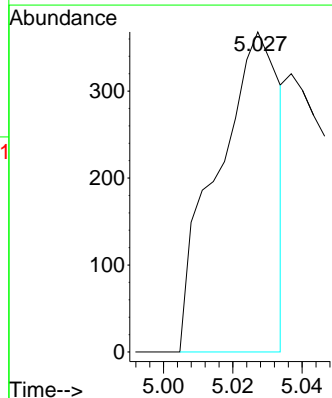
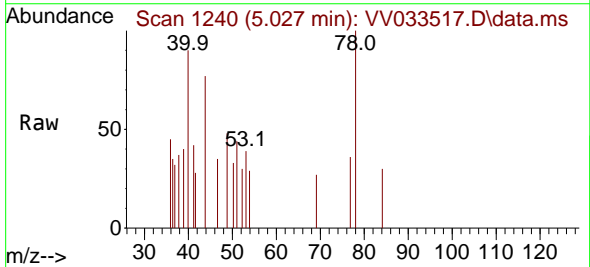


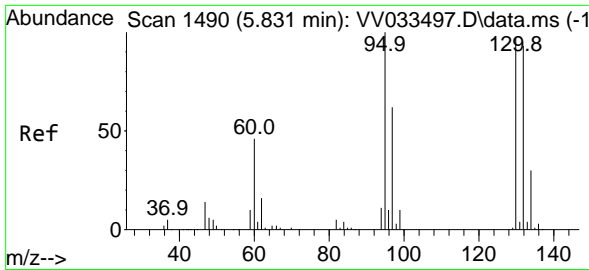
Tgt Ion: 97 Resp: 145  
 Ion Ratio Lower Upper  
 97 100  
 99 0.0 51.8 77.6#  
 61 69.7 34.8 52.2#



#33  
 Benzene  
 Concen: 9.144 ug/L  
 RT: 5.027 min Scan# 1240  
 Delta R.T. 0.019 min  
 Lab File: VV033517.D  
 Acq: 20 Dec 2023 17:14

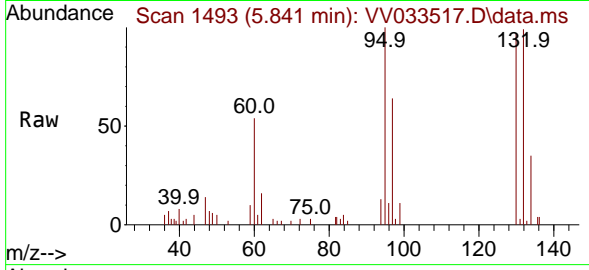
Tgt Ion: 78 Resp: 457





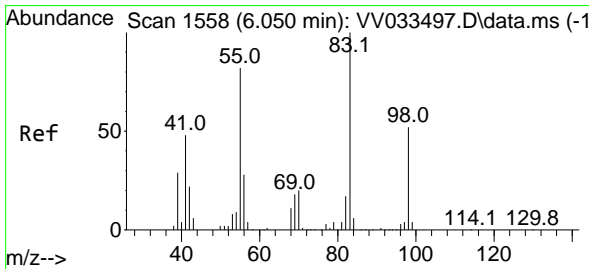
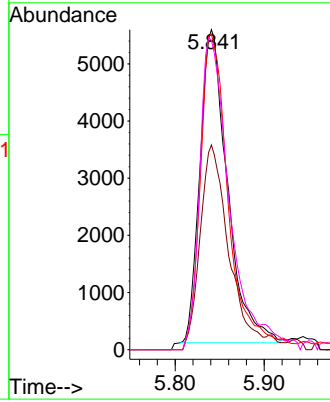
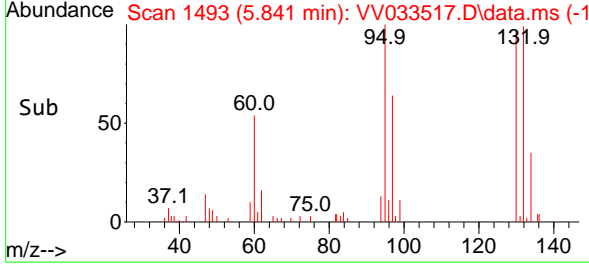
#34  
 Trichloroethene  
 Concen: 859.473 ug/L  
 RT: 5.841 min Scan# 1490  
 Delta R.T. 0.009 min  
 Lab File: VV033517.D  
 Acq: 20 Dec 2023 17:14

Instrument : MSVOA\_V  
 ClientSampleId : BH3D4

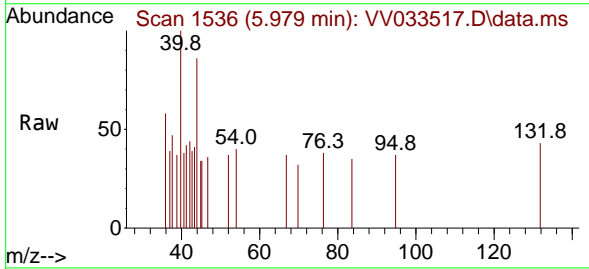


Tgt Ion: 95 Resp: 11784

Ion	Ratio	Lower	Upper
95	100		
97	67.3	44.8	83.2
132	98.7	69.9	129.7
130	96.7	73.3	136.1

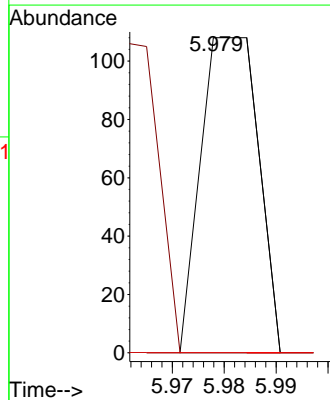
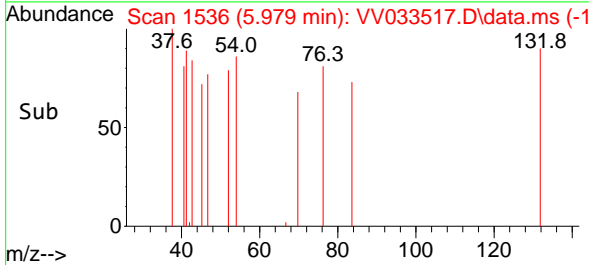


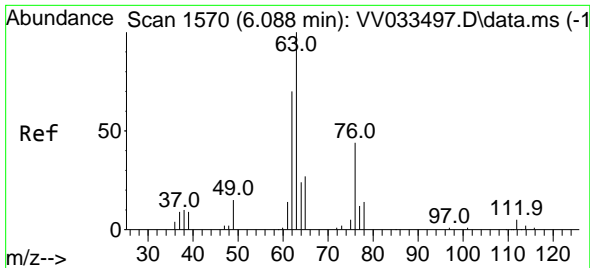
#35  
 Methylcyclohexane  
 Concen: 2.136 ug/L  
 RT: 5.979 min Scan# 1536  
 Delta R.T. -0.071 min  
 Lab File: VV033517.D  
 Acq: 20 Dec 2023 17:14



Tgt Ion: 83 Resp: 42

Ion	Ratio	Lower	Upper
83	100		
55	97.6	58.6	88.0#
98	0.0	40.9	61.3#

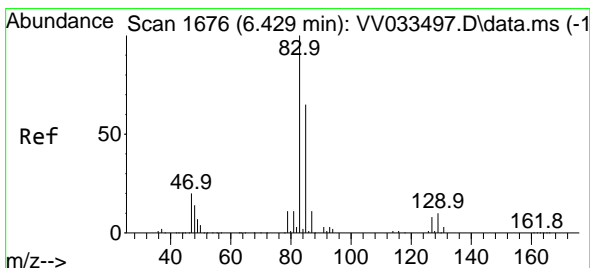
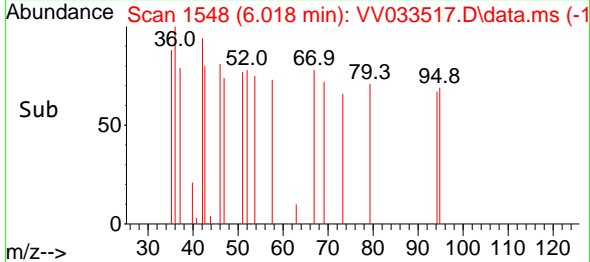
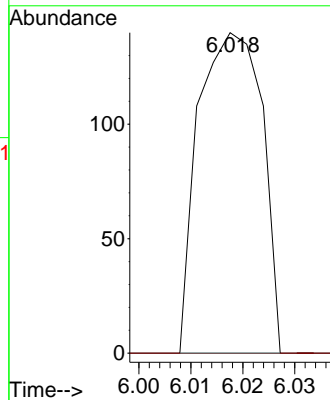
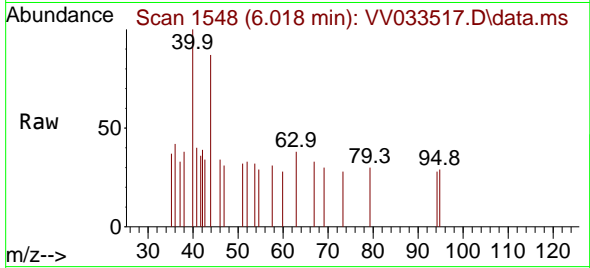




#37  
 1,2-Dichloropropane  
 Concen: 8.780 ug/L  
 RT: 6.018 min Scan# 111  
 Delta R.T. -0.071 min  
 Lab File: VV033517.D  
 Acq: 20 Dec 2023 17:14

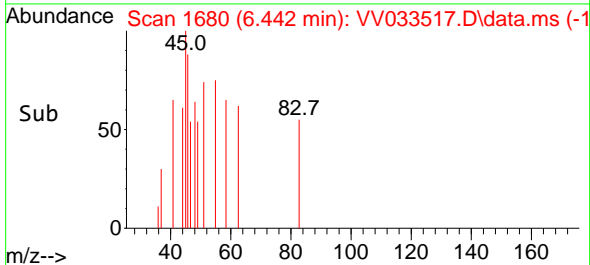
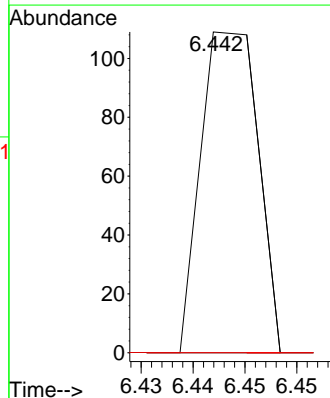
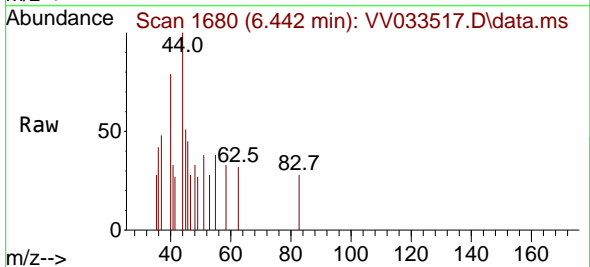
Instrument : MSVOA\_V  
 ClientSampleId : BH3D4

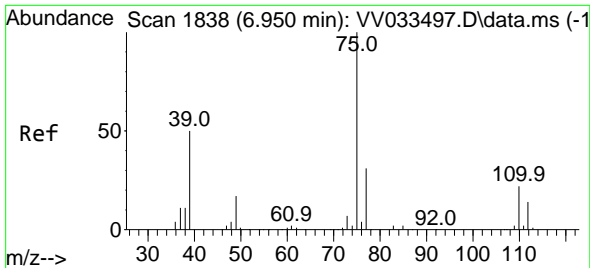
Tgt Ion: 63 Resp: 119  
 Ion Ratio Lower Upper  
 63 100  
 112 0.0 3.7 5.5#



#38  
 Bromodichloromethane  
 Concen: 2.153 ug/L  
 RT: 6.442 min Scan# 1680  
 Delta R.T. 0.013 min  
 Lab File: VV033517.D  
 Acq: 20 Dec 2023 17:14

Tgt Ion: 83 Resp: 42  
 Ion Ratio Lower Upper  
 83 100  
 85 0.0 45.2 84.0#  
 127 0.0 6.8 10.2#

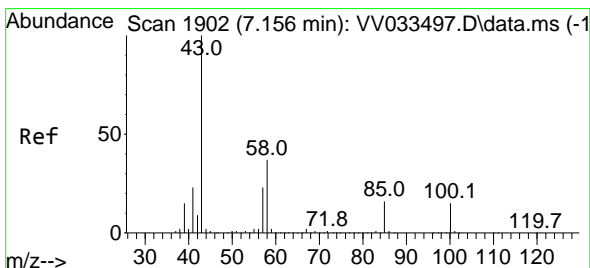
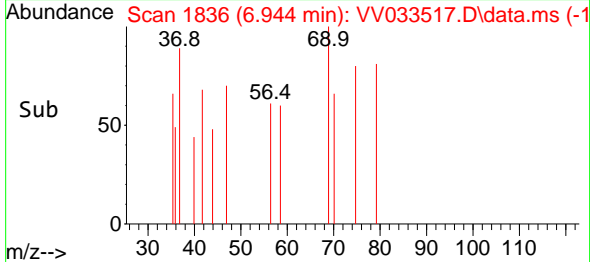
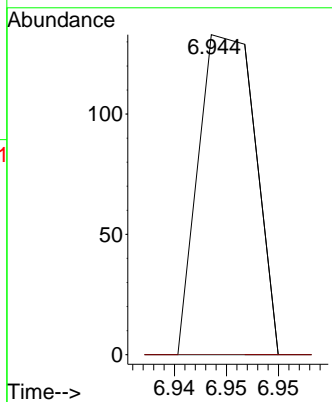
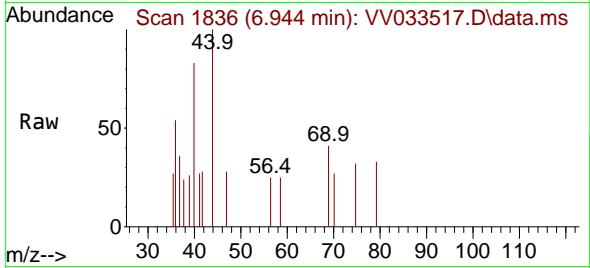




#39  
 cis-1,3-Dichloropropene  
 Concen: 2.536 ug/L  
 RT: 6.944 min Scan# 1836  
 Delta R.T. -0.007 min  
 Lab File: VV033517.D  
 Acq: 20 Dec 2023 17:14

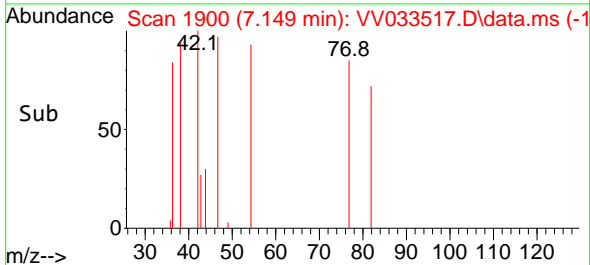
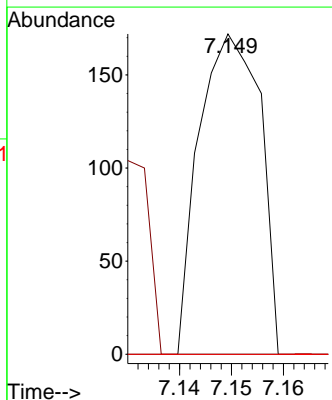
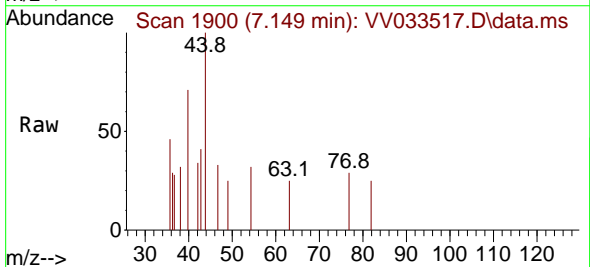
Instrument : MSVOA\_V  
 ClientSampleId : BH3D4

Tgt Ion: 75 Resp: 50  
 Ion Ratio Lower Upper  
 75 100  
 77 0.0 22.3 41.3#

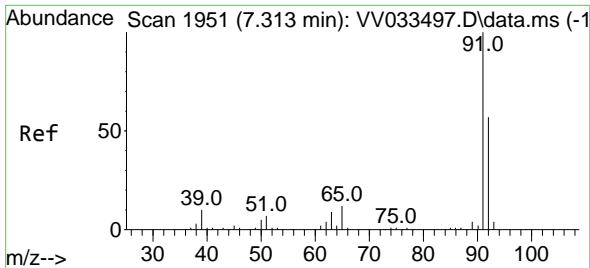


#40  
 4-Methyl-2-pentanone  
 Concen: 9.680 ug/L  
 RT: 7.149 min Scan# 1900  
 Delta R.T. -0.007 min  
 Lab File: VV033517.D  
 Acq: 20 Dec 2023 17:14

Tgt Ion: 43 Resp: 140  
 Ion Ratio Lower Upper  
 43 100  
 58 0.0 30.7 46.1#  
 100 0.0 13.6 20.4#



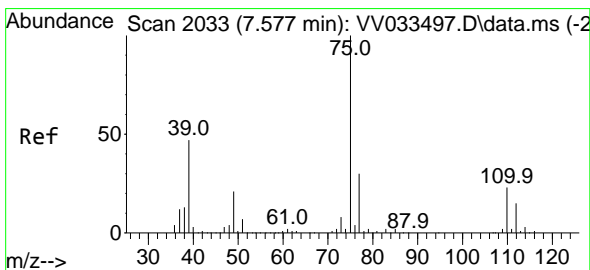
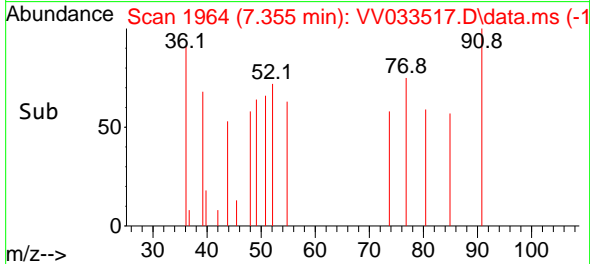
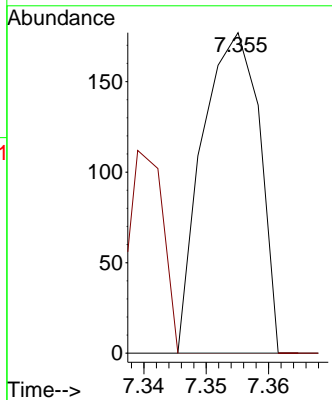
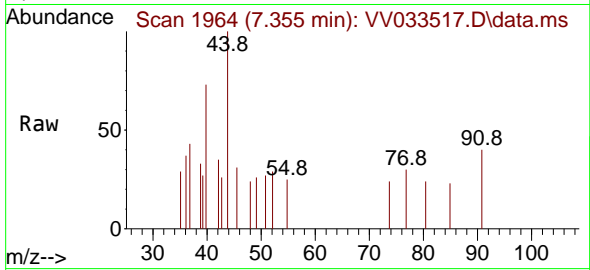




#42  
 Toluene  
 Concen: 2.114 ug/L  
 RT: 7.355 min Scan# 1951  
 Delta R.T. 0.042 min  
 Lab File: VV033517.D  
 Acq: 20 Dec 2023 17:14

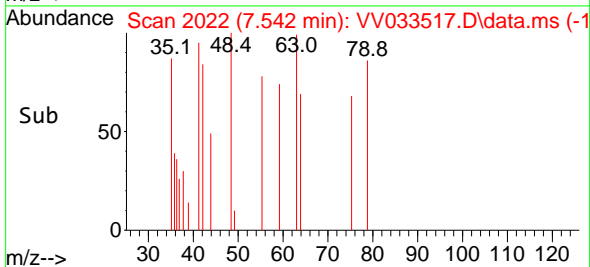
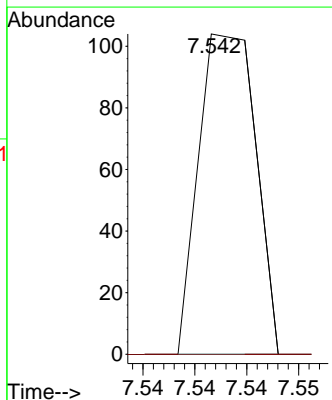
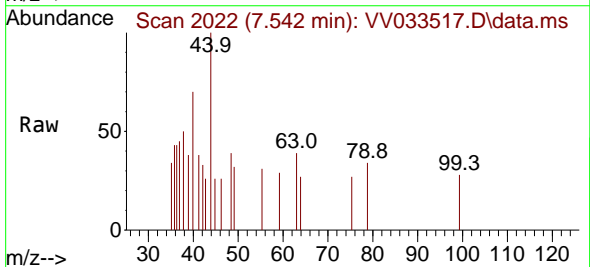
Instrument : MSVOA\_V  
 ClientSampleId : BH3D4

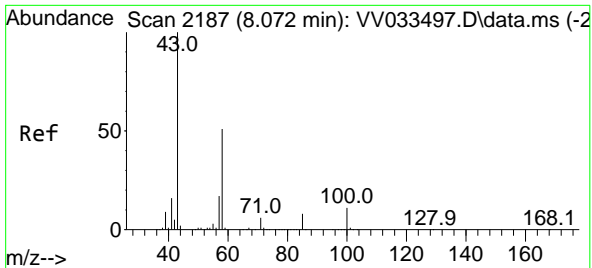
Tgt Ion: 91 Resp: 112  
 Ion Ratio Lower Upper  
 91 100  
 92 0.0 41.3 76.7#



#44  
 trans-1,3-Dichloropropene  
 Concen: 2.022 ug/L  
 RT: 7.542 min Scan# 2022  
 Delta R.T. -0.036 min  
 Lab File: VV033517.D  
 Acq: 20 Dec 2023 17:14

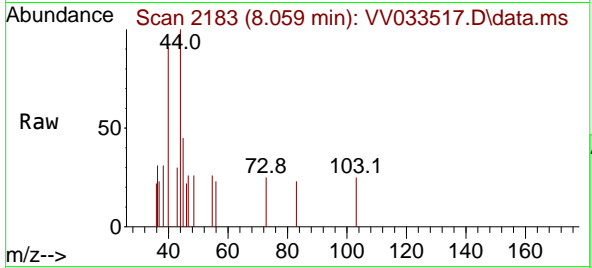
Tgt Ion: 75 Resp: 40  
 Ion Ratio Lower Upper  
 75 100  
 77 0.0 22.4 41.6#



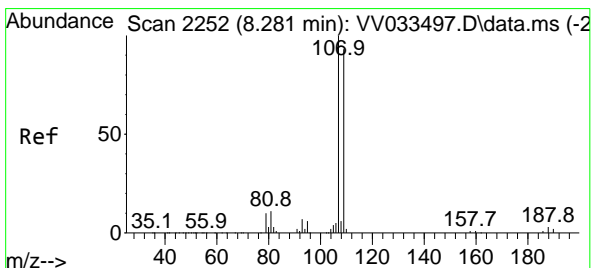
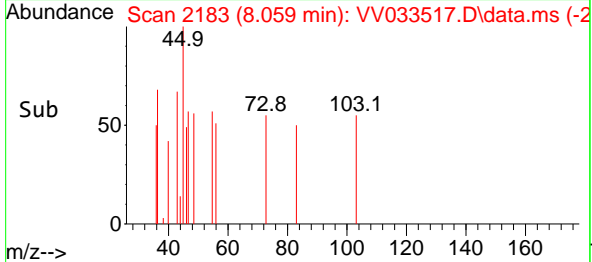
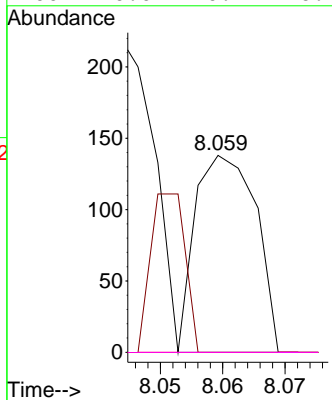


#48  
 2-Hexanone  
 Concen: 7.792 ug/L  
 RT: 8.059 min Scan# 2183  
 Delta R.T. -0.013 min  
 Lab File: VV033517.D  
 Acq: 20 Dec 2023 17:14

Instrument : MSVOA\_V  
 ClientSampleId : BH3D4

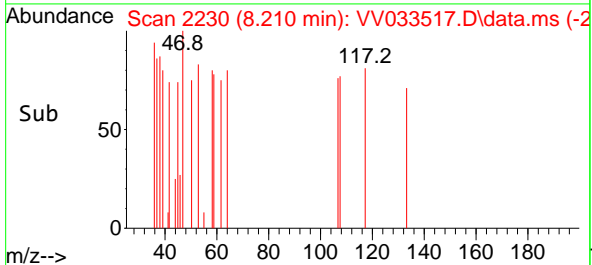
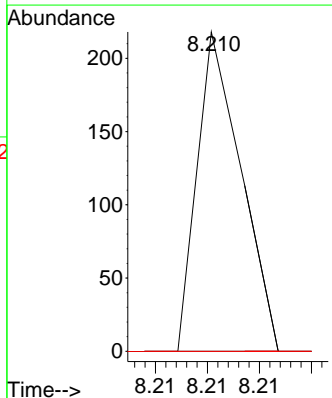
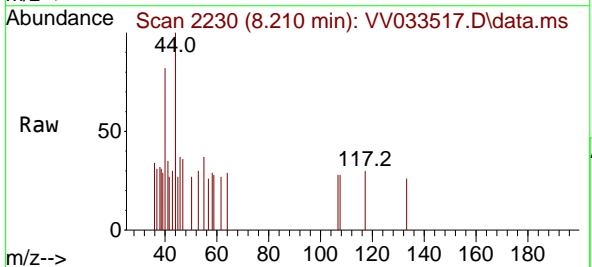


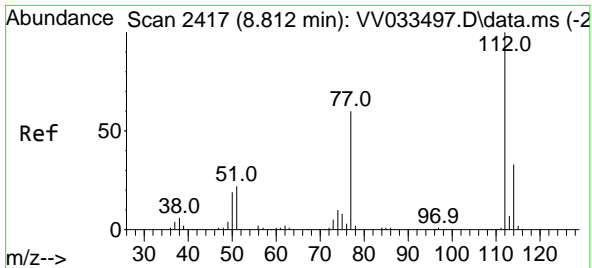
Tgt Ion	Resp	Lower	Upper
43	100		
58	0.0	43.0	64.6#
57	0.0	14.7	22.1#
100	0.0	10.7	16.1#



#50  
 1,2-Dibromoethane  
 Concen: 4.395 ug/L  
 RT: 8.210 min Scan# 2230  
 Delta R.T. -0.071 min  
 Lab File: VV033517.D  
 Acq: 20 Dec 2023 17:14

Tgt Ion	Resp	Lower	Upper
107	100		
109	0.0	64.2	119.2#
188	0.0	2.9	4.3#

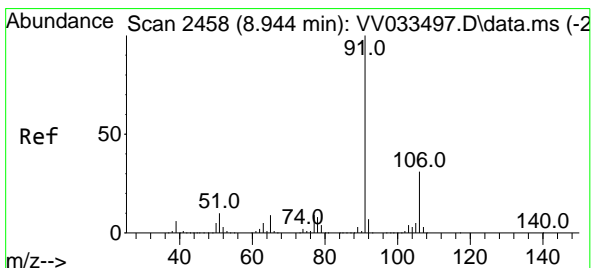
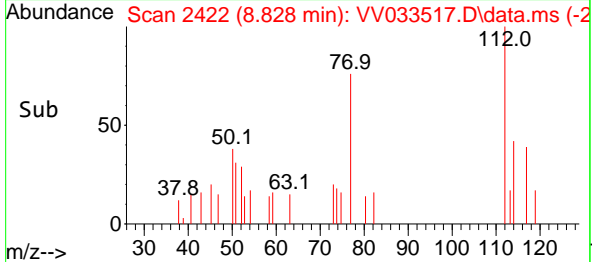
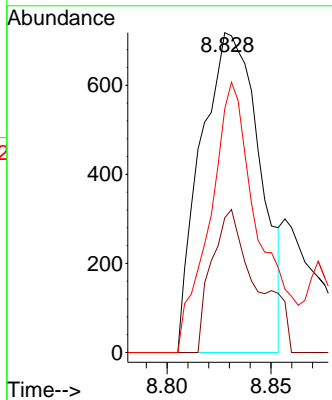
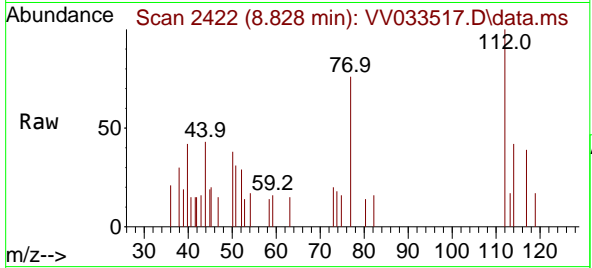




#51  
 Chlorobenzene  
 Concen: 37.199 ug/L  
 RT: 8.828 min Scan# 2417  
 Delta R.T. 0.016 min  
 Lab File: VV033517.D  
 Acq: 20 Dec 2023 17:14

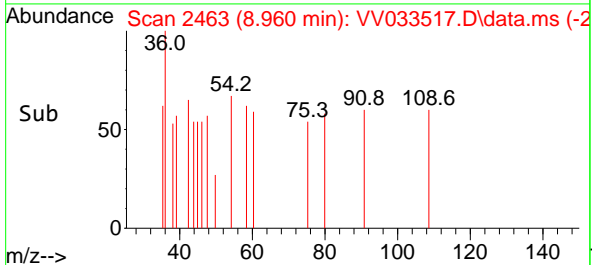
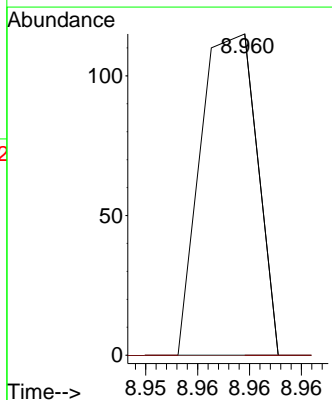
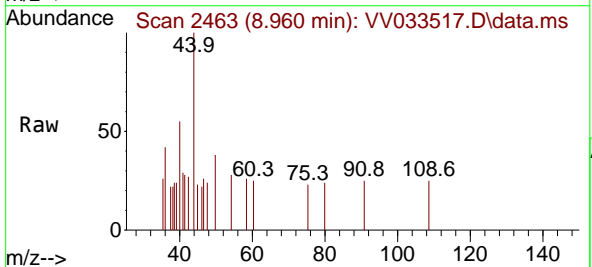
Instrument : MSVOA\_V  
 ClientSampleId : BH3D4

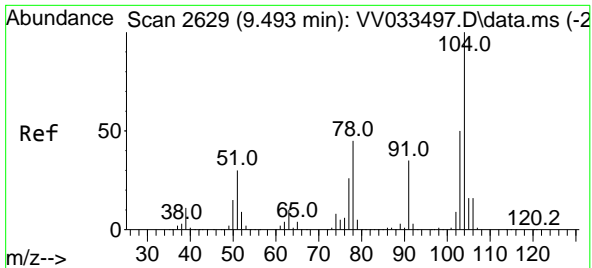
Tgt Ion	Resp	Lower	Upper
112	1420		
112	100		
114	42.1	22.5	41.7#
77	76.2	45.2	67.8#



#52  
 Ethylbenzene  
 Concen: 0.729 ug/L  
 RT: 8.960 min Scan# 2463  
 Delta R.T. 0.016 min  
 Lab File: VV033517.D  
 Acq: 20 Dec 2023 17:14

Tgt Ion	Resp	Lower	Upper
91	43		
91	100		
106	0.0	21.6	40.2#

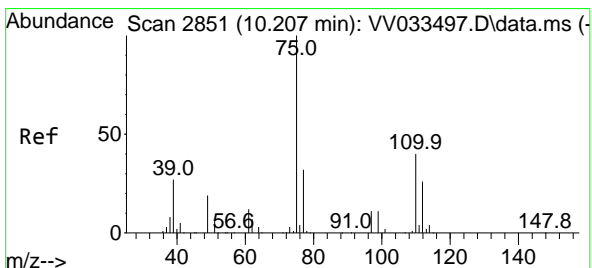
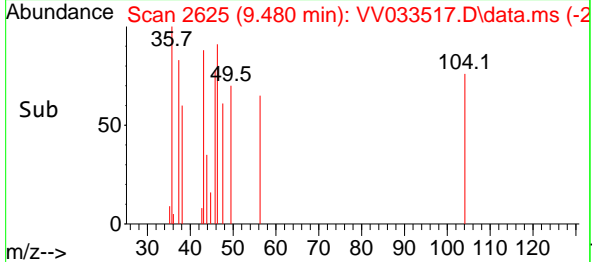
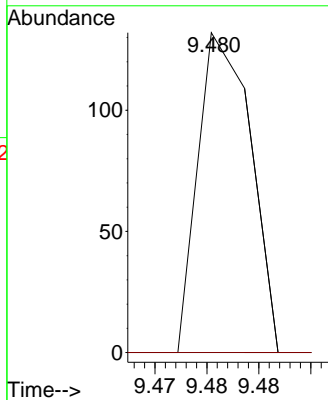
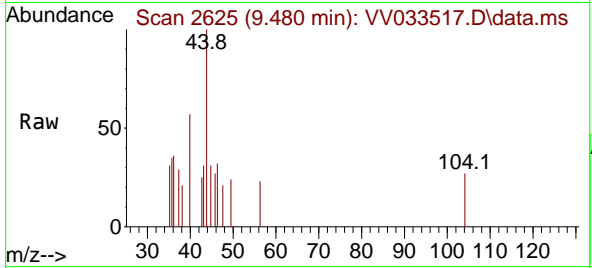




#55  
 Styrene  
 Concen: 1.237 ug/L  
 RT: 9.480 min Scan# 20  
 Delta R.T. -0.013 min  
 Lab File: VV033517.D  
 Acq: 20 Dec 2023 17:14

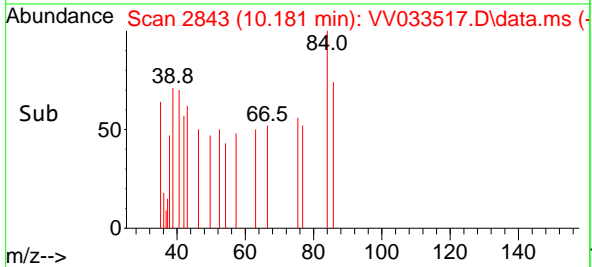
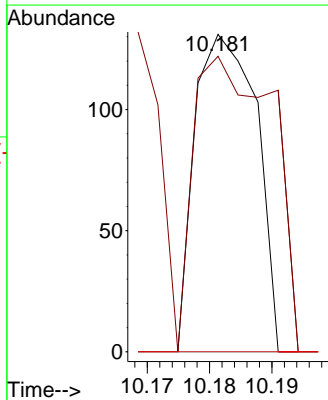
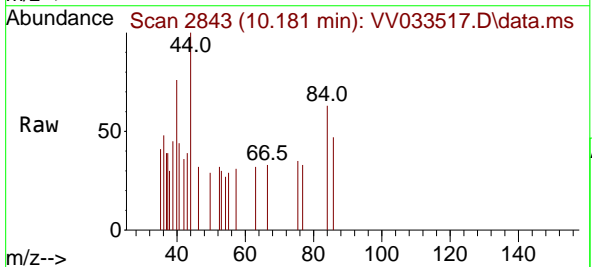
Instrument : MSVOA\_V  
 ClientSampleId : BH3D4

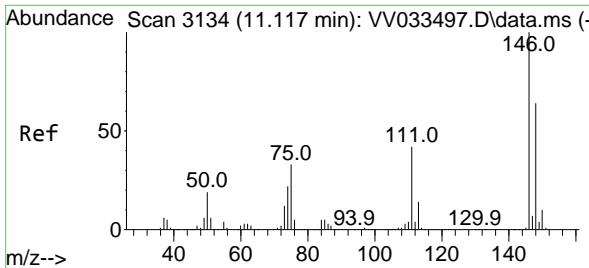
Tgt Ion: 104 Resp: 47  
 Ion Ratio Lower Upper  
 104 100  
 78 0.0 30.2 56.2#



#61  
 1,2,3-Trichloropropane  
 Concen: 2.498 ug/L  
 RT: 10.181 min Scan# 2843  
 Delta R.T. -0.026 min  
 Lab File: VV033517.D  
 Acq: 20 Dec 2023 17:14

Tgt Ion: 75 Resp: 90  
 Ion Ratio Lower Upper  
 75 100  
 77 95.6 25.7 38.5#  
 110 0.0 33.9 50.9#



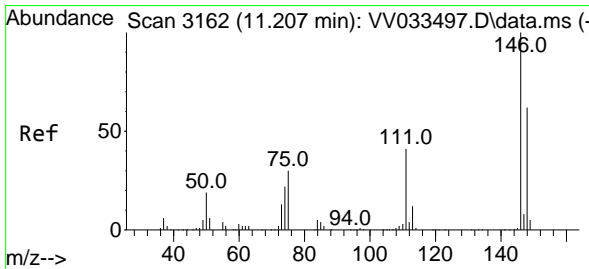
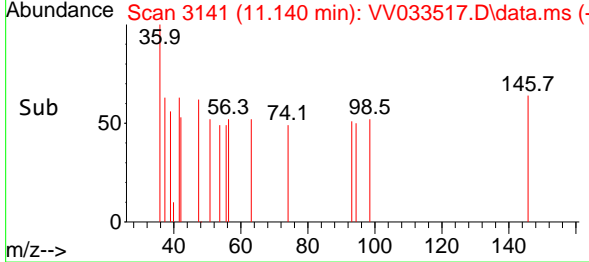
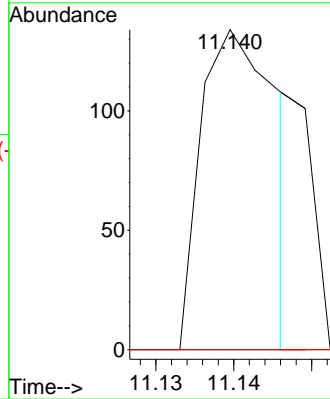
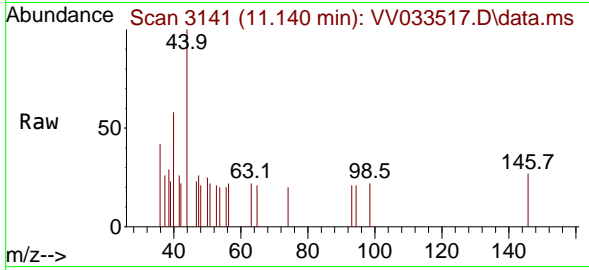


#64  
 1,3-Dichlorobenzene  
 Concen: 1.372 ug/L  
 RT: 11.140 min Scan# 3141  
 Delta R.T. 0.022 min  
 Lab File: VV033517.D  
 Acq: 20 Dec 2023 17:14

Instrument :  
 MSVOA\_V  
 ClientSampleId :  
 BH3D4

Tgt Ion:146 Resp: 91

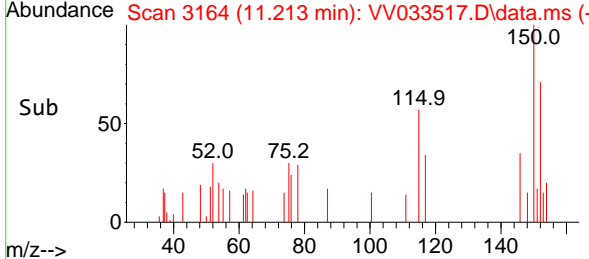
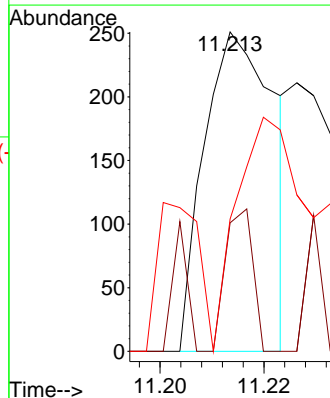
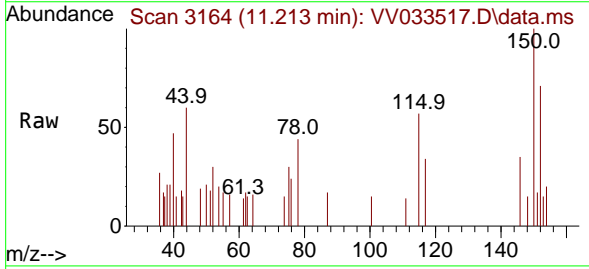
Ion	Ratio	Lower	Upper
146	100		
111	0.0	29.3	54.5#
148	0.0	45.4	84.4#

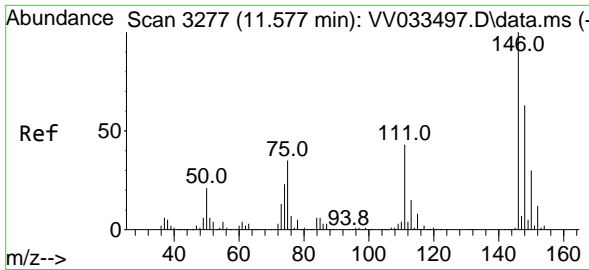


#65  
 1,4-Dichlorobenzene  
 Concen: 3.305 ug/L  
 RT: 11.213 min Scan# 3164  
 Delta R.T. 0.006 min  
 Lab File: VV033517.D  
 Acq: 20 Dec 2023 17:14

Tgt Ion:146 Resp: 236

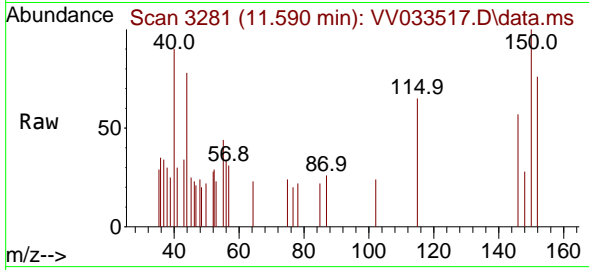
Ion	Ratio	Lower	Upper
146	100		
111	40.2	27.9	51.7
148	41.4	45.5	84.5#



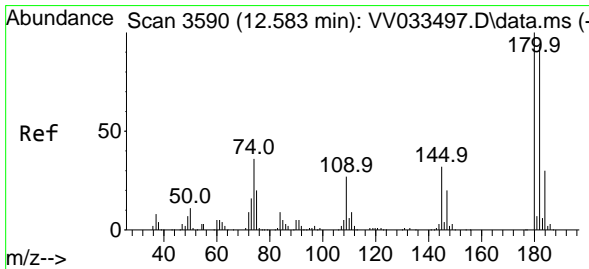
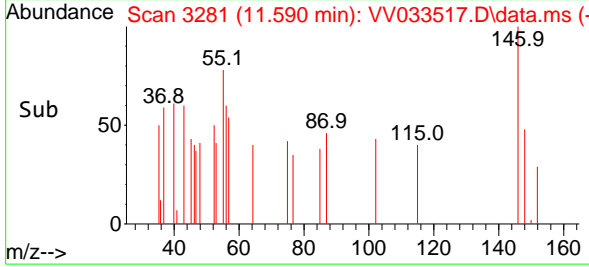
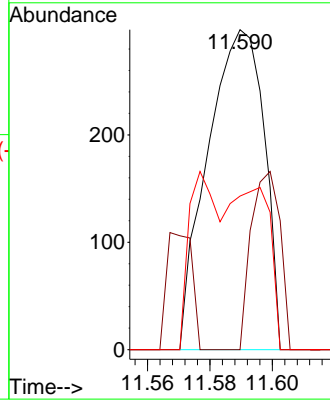


#67  
 1,2-Dichlorobenzene  
 Concen: 5.430 ug/L  
 RT: 11.590 min Scan# 31  
 Delta R.T. 0.013 min  
 Lab File: VV033517.D  
 Acq: 20 Dec 2023 17:14

Instrument :  
 MSVOA\_V  
 ClientSampleId :  
 BH3D4

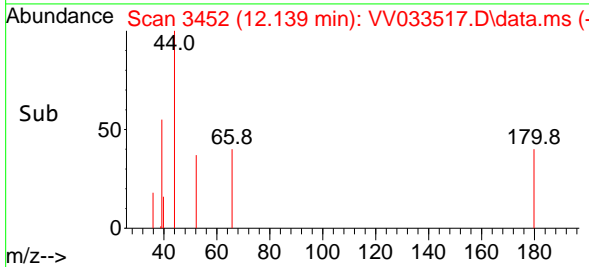
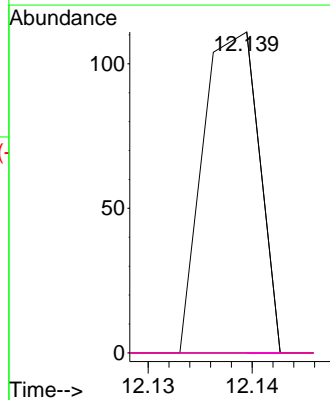
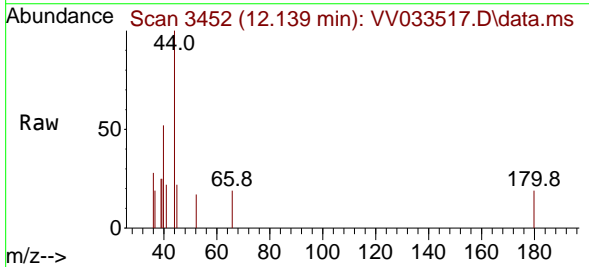


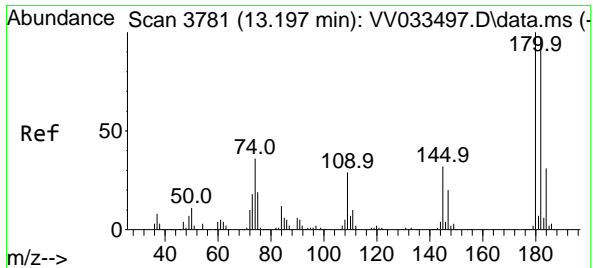
Tgt Ion:146 Resp: 375  
 Ion Ratio Lower Upper  
 146 100  
 111 0.0 33.5 50.3#  
 148 48.0 51.1 76.7#



#69  
 1,3,5-Trichlorobenzene  
 Concen: 0.894 ug/L  
 RT: 12.139 min Scan# 3452  
 Delta R.T. -0.444 min  
 Lab File: VV033517.D  
 Acq: 20 Dec 2023 17:14

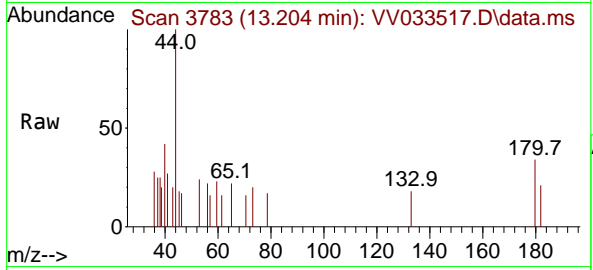
Tgt Ion:180 Resp: 41  
 Ion Ratio Lower Upper  
 180 100  
 182 0.0 76.2 114.4#  
 184 0.0 24.4 36.6#  
 145 0.0 25.8 38.6#





#70  
 1,2,4-trichlorobenzene  
 Concen: 4.937 ug/L  
 RT: 13.204 min Scan# 31  
 Delta R.T. 0.006 min  
 Lab File: VV033517.D  
 Acq: 20 Dec 2023 17:14

Instrument :  
 MSVOA\_V  
 ClientSampleId :  
 BH3D4



Tgt Ion:180 Resp: 198

Ion	Ratio	Lower	Upper
180	100		
182	125.8	76.1	114.1#
145	0.0	25.6	38.4#

