

Data Path : Z:\VOASRV\HPCHEM1\MSVOA V\DATA\VV122220\  
 Data File : VV019794.D  
 Acq On : 22 Dec 2020 14:44  
 Operator : SY/MD  
 Sample : L5173-07  
 Misc : 5.22µ/5.0mL/100µL/5.0mL/MSVOA\_V/MEOH  
 ALS Vial : 1 Sample Multiplier: 1

Instrument :  
 MSVOA\_V  
 ClientSampleId :  
 BG4R3

Integration Parameters: LSCINT.P

Integrator: RTE  
 Smoothing : OFF  
 Sampling : 1  
 Start Thrs: 0.2  
 Stop Thrs : 0

Filtering: 5  
 Min Area: 0 % of largest Peak  
 Max Peaks: 100  
 Peak Location: TOP

If leading or trailing edge < 100 prefer < Baseline drop else tangent >  
 Peak separation: 5

Method : Z:\VOASRV\HPCHEM1\MSVOA\_V\METHOD\SOMVLM121020WMA.M  
 Title : VOC Analysis

Signal : TIC

peak #	R.T. min	first scan	max scan	last scan	PK TY	peak height	corr. area	corr. % max.	% of total
1	1.309	61	68	89	rVB	324572	478917	11.62%	1.738%
2	1.569	143	149	167	rBV	176195	366896	8.91%	1.331%
3	2.084	300	309	321	rVB	760874	1085051	26.34%	3.937%
4	3.257	671	674	675	rBV3	515	276	0.01%	0.001%
5	3.322	692	694	697	rVB3	537	247	0.01%	0.001%
6	3.341	697	700	701	rBV2	388	213	0.01%	0.001%
7	3.412	719	722	723	rBV3	593	341	0.01%	0.001%
8	3.473	739	741	745	rBV2	452	253	0.01%	0.001%
9	3.511	747	753	759	rVB4	757	717	0.02%	0.003%
10	3.537	759	761	763	rBV3	719	333	0.01%	0.001%
11	3.566	767	770	773	rBV3	831	760	0.02%	0.003%
12	3.618	781	786	789	rBV4	683	601	0.01%	0.002%
13	3.679	802	805	808	rBV2	602	551	0.01%	0.002%
14	3.711	811	815	817	rBV2	750	590	0.01%	0.002%
15	3.814	840	847	851	rBV5	922	834	0.02%	0.003%
16	3.833	851	853	855	rBV2	690	295	0.01%	0.001%
17	3.913	865	878	934	rBV	134193	656857	15.94%	2.383%
18	4.354	1001	1015	1045	rVB	466122	1267360	30.76%	4.598%
19	4.772	1143	1145	1149	rVB2	766	451	0.01%	0.002%
20	4.810	1154	1157	1161	rBV6	857	753	0.02%	0.003%
21	4.862	1167	1173	1175	rBV4	1202	1098	0.03%	0.004%
22	4.936	1194	1196	1199	rVB3	1126	453	0.01%	0.002%
23	5.045	1212	1230	1267	rBV2	1343434	3367320	81.73%	12.217%
24	5.617	1395	1408	1438	rBV	714626	1562207	37.92%	5.668%
25	5.917	1488	1501	1521	rBV4	120320	278000	6.75%	1.009%
26	6.074	1537	1550	1586	rVB	678354	1509942	36.65%	5.478%
27	6.325	1625	1628	1631	rBV3	770	627	0.02%	0.002%
28	6.376	1642	1644	1648	rBV4	658	447	0.01%	0.002%
29	6.437	1660	1663	1665	rBV4	508	362	0.01%	0.001%
30	6.482	1674	1677	1678	rBV2	633	302	0.01%	0.001%
31	6.524	1688	1690	1693	rBV4	870	535	0.01%	0.002%
32	6.572	1703	1705	1706	rBV2	467	223	0.01%	0.001%
33	6.585	1706	1709	1710	rBV2	635	326	0.01%	0.001%
34	6.634	1719	1724	1725	rBV4	2109	1603	0.04%	0.006%

Data Path : Z:\VOASRV\HPCHEM1\MSVOA V\DATA\VV122220\  
 Data File : VV019794.D  
 Acq On : 22 Dec 2020 14:44  
 Operator : SY/MD  
 Sample : L5173-07  
 Misc : 5.22µ/5.0mL/100µL/5.0mL/MSVOA\_V/MEOH  
 ALS Vial : 1 Sample Multiplier: 1

Instrument :  
 MSVOA\_V  
 ClientSampleID :  
 BG4R3

## Integration Parameters: LSCINT.P

Integrator: RTE  
 Smoothing : OFF  
 Sampling : 1  
 Start Thrs: 0.2  
 Stop Thrs : 0

Filtering: 5  
 Min Area: 0 % of largest Peak  
 Max Peaks: 100  
 Peak Location: TOP

If leading or trailing edge < 100 prefer < Baseline drop else tangent >  
 Peak separation: 5

Method : Z:\VOASRV\HPCHEM1\MSVOA\_V\METHOD\SOMVLM121020WMA.M  
 Title : VOC Analysis

35	6.904	1801	1808	1810	rBV3	867	835	0.02%	0.003%
36	6.990	1822	1835	1875	rBV	367465	782355	18.99%	2.838%
37	7.164	1887	1889	1894	rBV4	1601	1155	0.03%	0.004%
38	7.318	1924	1937	1964	rBV	1436497	2676104	64.95%	9.709%
39	7.627	2023	2033	2066	rBV	231628	518668	12.59%	1.882%
40	7.978	2128	2142	2169	rBV	2411091	4119941	100.00%	14.948%
41	8.135	2171	2191	2221	rBV2	393551	1430399	34.72%	5.190%
42	8.711	2367	2370	2371	rBV3	465	235	0.01%	0.001%
43	8.778	2388	2391	2397	rVB4	1119	1236	0.03%	0.004%
44	8.804	2397	2399	2403	rBV2	1422	987	0.02%	0.004%
45	8.862	2403	2417	2446	rBV	952038	1956690	47.49%	7.099%
46	9.196	2519	2521	2524	rVB4	850	354	0.01%	0.001%
47	9.209	2524	2525	2528	rBV3	611	417	0.01%	0.002%
48	9.232	2530	2532	2536	rBV3	617	317	0.01%	0.001%
49	9.267	2541	2543	2546	rBV2	803	476	0.01%	0.002%
50	9.386	2577	2580	2583	rBV3	1019	686	0.02%	0.002%
51	9.405	2583	2586	2588	rVV3	675	386	0.01%	0.001%
52	9.511	2615	2619	2621	rBV3	775	628	0.02%	0.002%
53	9.662	2665	2666	2668	rBV2	621	245	0.01%	0.001%
54	9.714	2680	2682	2685	rBV4	604	371	0.01%	0.001%
55	9.740	2685	2690	2694	rVV3	744	730	0.02%	0.003%
56	9.762	2694	2697	2700	rVV2	878	764	0.02%	0.003%
57	9.807	2708	2711	2714	rVV4	756	668	0.02%	0.002%
58	9.839	2718	2721	2729	rVV5	902	964	0.02%	0.003%
59	9.974	2760	2763	2765	rBV3	391	266	0.01%	0.001%
60	9.990	2765	2768	2770	rVV2	715	426	0.01%	0.002%
61	10.022	2776	2778	2784	rVB6	1252	705	0.02%	0.003%
62	10.051	2784	2787	2789	rBV3	443	350	0.01%	0.001%
63	10.087	2794	2798	2801	rBV5	887	683	0.02%	0.002%
64	10.135	2811	2813	2816	rVB2	504	284	0.01%	0.001%
65	10.174	2820	2825	2826	rBV4	760	708	0.02%	0.003%
66	10.235	2829	2844	2865	rVV	764051	1366090	33.16%	4.956%
67	10.392	2891	2893	2895	rBV3	994	574	0.01%	0.002%
68	10.450	2908	2911	2913	rBV2	751	377	0.01%	0.001%
69	10.508	2927	2929	2931	rVB2	827	342	0.01%	0.001%
70	10.588	2947	2954	2961	rVB6	3424	4732	0.11%	0.017%
71	10.743	2997	3002	3003	rBV4	818	672	0.02%	0.002%

Data Path : Z:\VOASRV\HPCHEM1\MSVOA V\DATA\VV122220\  
 Data File : VV019794.D  
 Acq On : 22 Dec 2020 14:44  
 Operator : SY/MD  
 Sample : L5173-07  
 Misc : 5.22µ/5.0mL/100uL/5.0mL/MSVOA\_V/MEOH  
 ALS Vial : 1 Sample Multiplier: 1

Instrument :  
 MSVOA\_V  
 ClientSampleId :  
 BG4R3

## Integration Parameters: LSCINT.P

Integrator: RTE  
 Smoothing : OFF Filtering: 5  
 Sampling : 1 Min Area: 0 % of largest Peak  
 Start Thrs: 0.2 Max Peaks: 100  
 Stop Thrs : 0 Peak Location: TOP

If leading or trailing edge < 100 prefer < Baseline drop else tangent >  
 Peak separation: 5

Method : Z:\VOASRV\HPCHEM1\MSVOA\_V\METHOD\SOMVLM121020WMA.M  
 Title : VOC Analysis

72	10.868	3037	3041	3043	rBV3	907	627	0.02%	0.002%
73	10.971	3070	3073	3076	rVB3	1068	667	0.02%	0.002%
74	10.993	3076	3080	3081	rBV3	379	257	0.01%	0.001%
75	11.080	3103	3107	3108	rBV	748	535	0.01%	0.002%
76	11.132	3119	3123	3125	rBV3	661	694	0.02%	0.003%
77	11.260	3151	3163	3180	rBV	1173518	1852068	44.95%	6.720%
78	11.450	3219	3222	3227	rBV5	1277	1023	0.02%	0.004%
79	11.479	3227	3231	3236	rVB6	1206	1179	0.03%	0.004%
80	11.511	3238	3241	3245	rBV4	908	806	0.02%	0.003%
81	11.572	3258	3260	3262	rVB3	926	316	0.01%	0.001%
82	11.637	3268	3280	3297	rBV	1415941	2234800	54.24%	8.108%
83	12.109	3425	3427	3434	rVB6	1085	766	0.02%	0.003%
84	12.212	3457	3459	3462	rBV3	649	325	0.01%	0.001%
85	12.299	3482	3486	3488	rBV3	745	705	0.02%	0.003%
86	12.379	3506	3511	3515	rBV6	1115	1081	0.03%	0.004%
87	12.415	3518	3522	3524	rBV3	981	679	0.02%	0.002%
88	12.637	3588	3591	3592	rBV3	778	400	0.01%	0.001%
89	12.694	3605	3609	3611	rBV3	997	768	0.02%	0.003%
90	12.752	3624	3627	3630	rBV3	882	848	0.02%	0.003%
91	13.006	3704	3706	3708	rBV2	1090	499	0.01%	0.002%
92	13.019	3708	3710	3714	rBV3	786	492	0.01%	0.002%
93	13.183	3759	3761	3766	rVB4	847	581	0.01%	0.002%
94	13.215	3766	3771	3772	rBV3	852	630	0.02%	0.002%
95	13.688	3915	3918	3919	rBV2	913	454	0.01%	0.002%
96	13.794	3948	3951	3955	rBV3	1134	888	0.02%	0.003%
97	13.987	4008	4011	4015	rBV2	991	937	0.02%	0.003%
98	14.556	4185	4188	4194	rBV5	948	757	0.02%	0.003%
99	14.897	4291	4294	4295	rBV3	966	519	0.01%	0.002%
100	15.025	4332	4334	4336	rBV3	1205	636	0.02%	0.002%

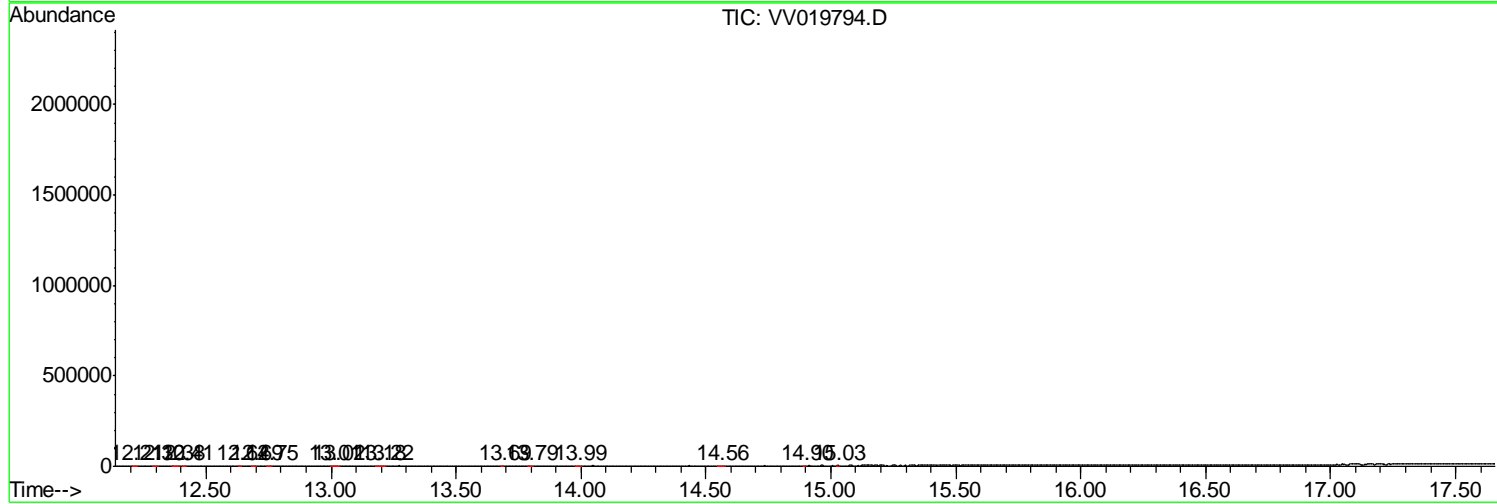
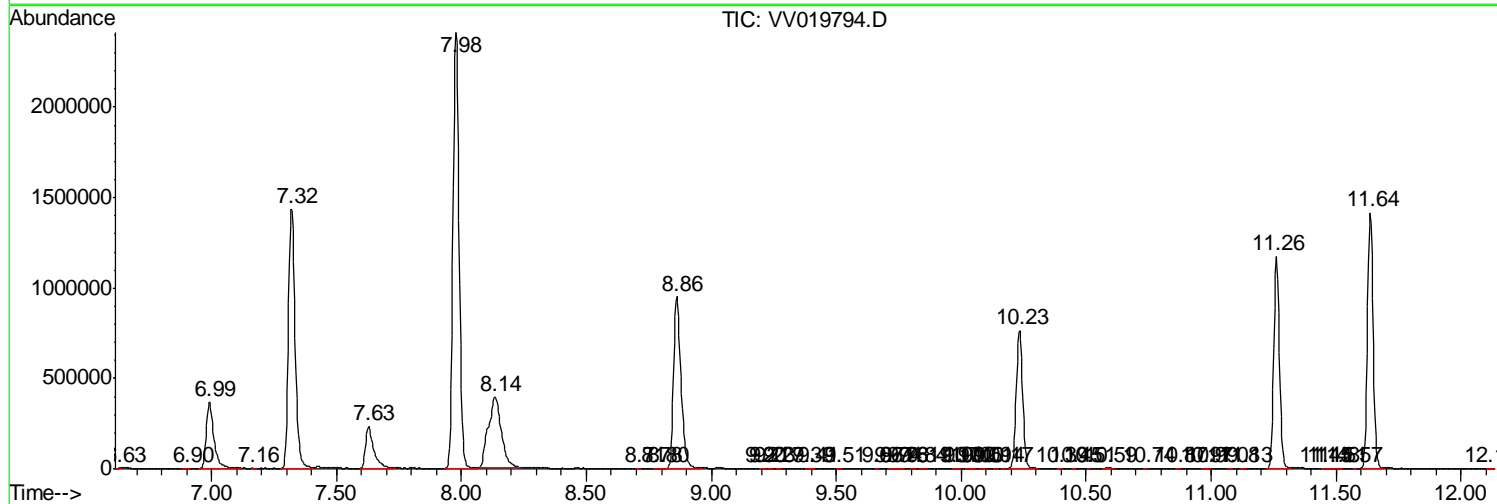
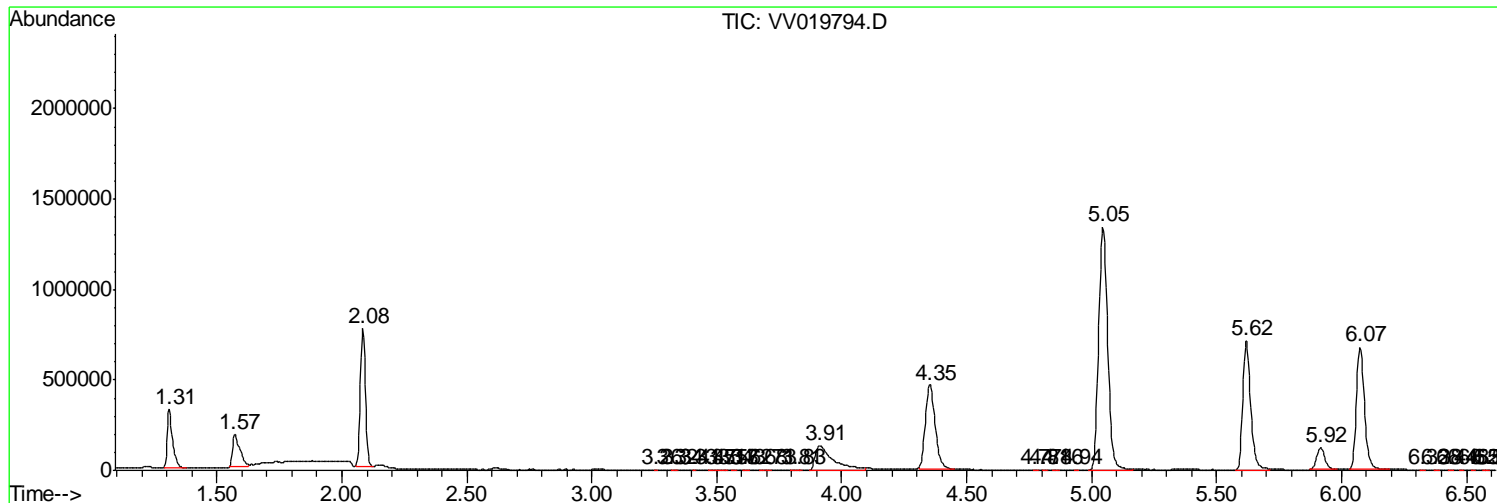
Sum of corrected areas: 27562498

Data Path : Z:\VOASRV\HPCHEM1\MSVOA V\DATA\VV122220\  
 Data File : VV019794.D  
 Acq On : 22 Dec 2020 14:44  
 Operator : SY/MD  
 Sample : L5173-07  
 Misc : 5.22µ/5.0mL/100uL/5.0mL/MSVOA\_V/MEOH  
 ALS Vial : 1 Sample Multiplier: 1

**Instrument :**  
 MSVOA\_V  
**ClientSampled :**  
 BG4R3

Quant Method : Z:\VOASRV\HPCHEM1\MSVOA\_V\METHOD\SOMVLM121020WMA.M  
 Quant Title : VOC Analysis

TIC Library : C:\DATABASE\NIST11.L  
 TIC Integration Parameters: LSCINT.P



Data Path : Z:\VOASRV\HPCHEM1\MSVOA\_V\DATA\VV122220\  
Data File : VV019794.D  
Acq On : 22 Dec 2020 14:44  
Operator : SY/MD  
Sample : L5173-07  
Misc : 5.22g/5.0mL/100uL/5.0mL/MSVOA\_V/MEOH  
ALS Vial : 1 Sample Multiplier: 1

Instrument :  
MSVOA\_V  
ClientSampleId :  
BG4R3

Quant Method : Z:\VOASRV\HPCHEM1\MSVOA\_V\METHOD\SOMVLM121020WMA.M  
Quant Title : VOC Analysis

TIC Library : C:\DATABASE\NIST11.L  
TIC Integration Parameters: LSCINT.P

No Library Search Compounds Detected

\*\*\*\*\*

Data Path : Z:\VOASRV\HPCHEM1\MSVOA\_V\DATA\VV122220\  
Data File : VV019794.D  
Acq On : 22 Dec 2020 14:44  
Operator : SY/MD  
Sample : L5173-07  
Misc : 5.22g/5.0mL/100uL/5.0mL/MSVOA\_V/MEOH  
ALS Vial : 1 Sample Multiplier: 1

Instrument :  
MSVOA\_V  
ClientSampleId :  
BG4R3

Quant Method : Z:\VOASRV\HPCHEM1\MSVOA\_V\METHOD\SOMVLM121020WMA.M  
Quant Title : VOC Analysis

TIC Library : C:\DATABASE\NIST11.L  
TIC Integration Parameters: LSCINT.P

TIC Top Hit name	RT	EstConc	Units	Response	--Internal Standard--			
					#	RT	Resp	Conc

---