

Data Path : Z:\voasrv\HPCHEM1\MSVOA\_V\Data\VW122222\  
 Data File : VV029756.D  
 Acq On : 22 Dec 2022 10:49  
 Operator : SY/MD  
 Sample : VSTDCCC050  
 Misc : 5.0mL/MSVOA\_V/WATER  
 ALS Vial : 2 Sample Multiplier: 1

Instrument :  
 MSVOA\_V  
 ClientSampleId :  
 VSTD050395

Quant Time: Dec 23 02:08:53 2022  
 Quant Method : Z:\voasrv\HPCHEM1\MSVOA\_V\Method\SFAMVLM120722WMA.M  
 Quant Title : VOC Analysis  
 QLast Update : Wed Dec 21 00:15:13 2022  
 Response via : Initial Calibration

Compound	R.T.	QIon	Response	Conc	Units	Dev(Min)
Internal Standards						
1) 1,4-Difluorobenzene	5.603	114	491283	50.000	ug/L	0.00
28) Chlorobenzene-d5	8.841	117	459165	50.000	ug/L	0.00
58) 1,4-Dichlorobenzene-d4	11.236	152	253671	50.000	ug/L	0.00
System Monitoring Compounds						
4) Vinyl Chloride-d3	1.307	65	122509	40.722	ug/L	0.00
Spiked Amount	50.000	Range 60 - 135	Recovery =	81.440%		
7) Chloroethane-d5	1.564	69	110667	48.242	ug/L	0.00
Spiked Amount	50.000	Range 70 - 130	Recovery =	96.480%		
11) 1,1-Dichloroethene-d2	2.104	63	239462	51.033	ug/L	0.00
Spiked Amount	50.000	Range 60 - 125	Recovery =	102.060%		
21) 2-Butanone-d5	3.870	46	175953	95.876	ug/L	0.00
Spiked Amount	100.000	Range 40 - 130	Recovery =	95.880%		
24) Chloroform-d	4.333	84	253689	44.811	ug/L	0.00
Spiked Amount	50.000	Range 70 - 125	Recovery =	89.620%		
26) 1,2-Dichloroethane-d4	5.018	65	148850	46.036	ug/L	0.00
Spiked Amount	50.000	Range 70 - 125	Recovery =	92.080%		
32) Benzene-d6	5.037	84	526547	43.399	ug/L	0.00
Spiked Amount	50.000	Range 70 - 125	Recovery =	86.800%		
36) 1,2-Dichloropropane-d6	6.056	67	169022	45.608	ug/L	0.00
Spiked Amount	50.000	Range 70 - 120	Recovery =	91.220%		
41) Toluene-d8	7.304	98	485150	42.439	ug/L	0.00
Spiked Amount	50.000	Range 80 - 120	Recovery =	84.880%		
43) trans-1,3-Dichloroprop...	7.609	79	75075	40.118	ug/L	0.00
Spiked Amount	50.000	Range 60 - 125	Recovery =	80.240%		
47) 2-Hexanone-d5	8.079	63	145242	91.778	ug/L	0.00
Spiked Amount	100.000	Range 45 - 130	Recovery =	91.780%		
56) 1,1,2,2-Tetrachloroeth...	10.204	84	250990	47.394	ug/L	0.00
Spiked Amount	50.000	Range 65 - 120	Recovery =	94.780%		
66) 1,2-Dichlorobenzene-d4	11.612	152	197088	40.814	ug/L	0.00
Spiked Amount	50.000	Range 80 - 120	Recovery =	81.620%		
Target Compounds						
2) Dichlorodifluoromethane	1.127	85	179574	46.405	ug/L	100
3) Chloromethane	1.240	50	197012	44.653	ug/L	99
5) Vinyl chloride	1.310	62	198578	53.794	ug/L	98
6) Bromomethane	1.519	94	80909	54.472	ug/L	98
8) Chloroethane	1.580	64	127263	61.913	ug/L	99
9) Trichlorofluoromethane	1.751	101	254995	55.180	ug/L	100
10) 1,1,2-Trichloro-1,2,2-...	2.114	101	151324	58.931	ug/L	97
12) 1,1-Dichloroethene	2.114	96	149278	56.846	ug/L	97
13) Acetone	2.162	43	166066	138.904	ug/L	97
14) Carbon disulfide	2.288	76	448044	51.265	ug/L	100
15) Methyl Acetate	2.423	43	147895	54.297	ug/L	98
16) Methylene chloride	2.500	84	200250	61.330	ug/L	99
17) trans-1,2-Dichloroethene	2.751	96	159919	52.852	ug/L	97
18) Methyl tert-butyl Ether	2.760	73	500349	53.972	ug/L	99
19) 1,1-Dichloroethane	3.178	63	291027	56.144	ug/L	99
20) cis-1,2-Dichloroethene	3.895	96	179328	53.897	ug/L	97
22) 2-Butanone	3.950	43	218191	114.697	ug/L	98
23) Bromochloromethane	4.233	128	91512	53.413	ug/L	91
25) Chloroform	4.358	83	314596	58.541	ug/L	100

Data Path : Z:\voasrv\HPCHEM1\MSVOA\_V\Data\VW122222\  
 Data File : VV029756.D  
 Acq On : 22 Dec 2022 10:49  
 Operator : SY/MD  
 Sample : VSTDCCC050  
 Misc : 5.0mL/MSVOA\_V/WATER  
 ALS Vial : 2 Sample Multiplier: 1

Instrument :  
 MSVOA\_V  
 ClientSampleId :  
 VSTD050395

Quant Time: Dec 23 02:08:53 2022  
 Quant Method : Z:\voasrv\HPCHEM1\MSVOA\_V\Method\SFAMVLM120722WMA.M  
 Quant Title : VOC Analysis  
 QLast Update : Wed Dec 21 00:15:13 2022  
 Response via : Initial Calibration

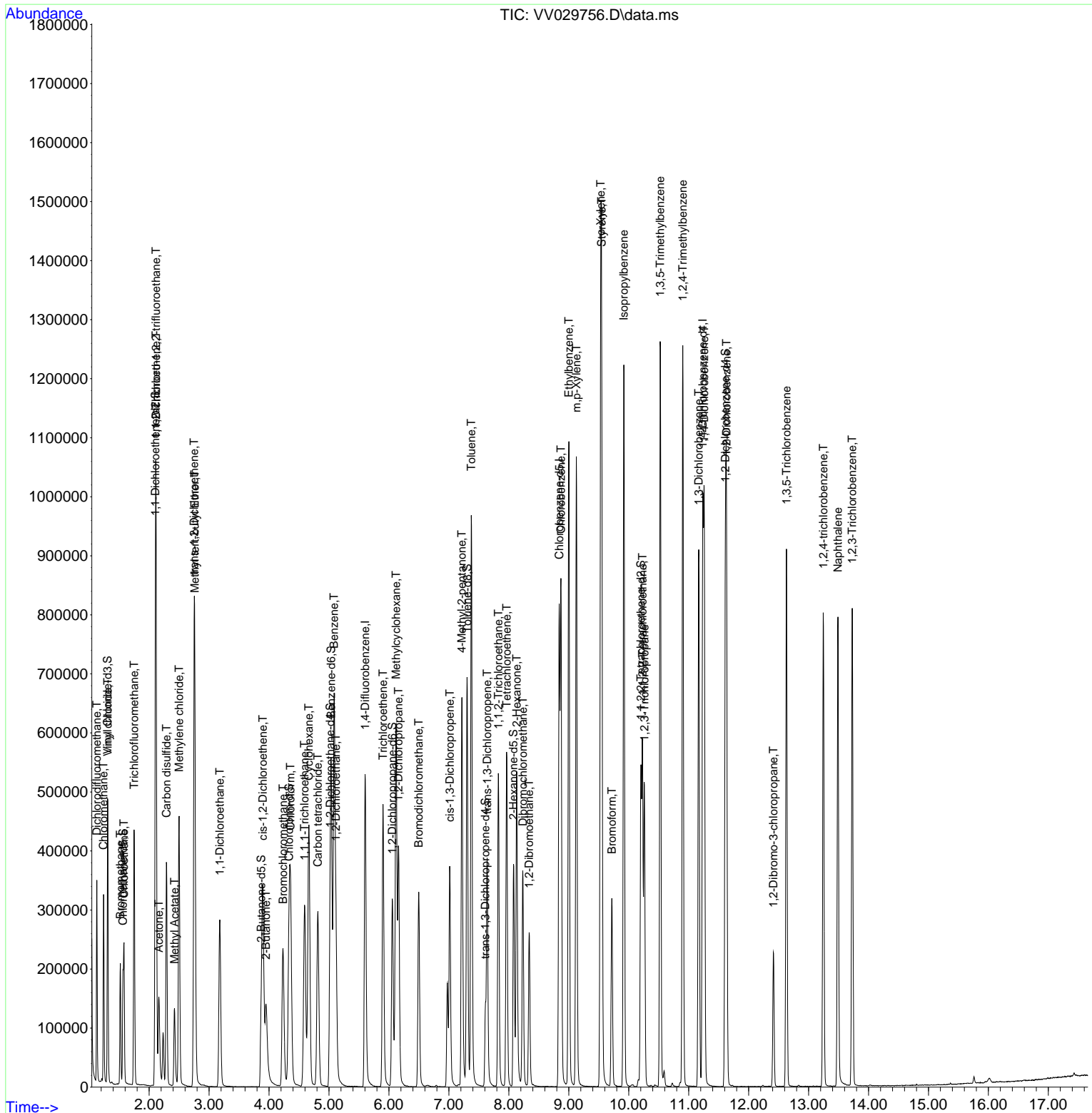
Compound	R.T.	QIon	Response	Conc	Units	Dev(Min)
27) 1,2-Dichloroethane	5.114	62	205751	54.200	ug/L	99
29) Cyclohexane	4.664	56	253730	51.011	ug/L	95
30) 1,1,1-Trichloroethane	4.593	97	263280	52.629	ug/L	98
31) Carbon tetrachloride	4.815	117	226187	51.777	ug/L	100
33) Benzene	5.085	78	690714	53.368	ug/L	100
34) Trichloroethene	5.902	95	172352	53.142	ug/L	99
35) Methylcyclohexane	6.120	83	276666	50.227	ug/L	99
37) 1,2-Dichloropropane	6.159	63	176299	56.437	ug/L	100
38) Bromodichloromethane	6.497	83	233915	54.244	ug/L	100
39) cis-1,3-Dichloropropene	7.014	75	241508	47.009	ug/L	99
40) 4-Methyl-2-pentanone	7.217	43	413559	111.037	ug/L	98
42) Toluene	7.374	91	736082	52.840	ug/L	99
44) trans-1,3-Dichloropropene	7.638	75	230814	47.441	ug/L	99
45) 1,1,2-Trichloroethane	7.825	97	174601	54.102	ug/L	98
46) Tetrachloroethene	7.963	164	135372	51.916	ug/L	99
48) 2-Hexanone	8.130	43	319361	112.233	ug/L	96
49) Dibromochloromethane	8.233	129	192763	54.100	ug/L	99
50) 1,2-Dibromoethane	8.339	107	175380	52.748	ug/L	99
51) Chlorobenzene	8.869	112	469371	53.210	ug/L	100
52) Ethylbenzene	9.001	91	784372	53.556	ug/L	100
53) m,p-Xylene	9.127	106	308464	53.214	ug/L	99
54) o-Xylene	9.532	106	300003	52.322	ug/L	100
55) Styrene	9.548	104	548430	55.039	ug/L	99
57) 1,1,2,2-Tetrachloroethane	10.230	83	283257	54.869	ug/L	97
59) Bromoform	9.718	173	149734	53.434	ug/L	99
60) Isopropylbenzene	9.918	105	792799	53.232	ug/L	100
61) 1,2,3-Trichloropropane	10.262	75	211895	54.116	ug/L	99
62) 1,3,5-Trimethylbenzene	10.525	105	677650	51.460	ug/L	100
63) 1,2,4-Trimethylbenzene	10.902	105	680117	52.103	ug/L	100
64) 1,3-Dichlorobenzene	11.168	146	383507	52.664	ug/L	99
65) 1,4-Dichlorobenzene	11.258	146	389889	52.682	ug/L	99
67) 1,2-Dichlorobenzene	11.631	146	378480	50.826	ug/L	99
68) 1,2-Dibromo-3-chloropr...	12.413	75	57103	46.922	ug/L	98
69) 1,3,5-Trichlorobenzene	12.631	180	284281	49.055	ug/L	99
70) 1,2,4-trichlorobenzene	13.246	180	250899	48.687	ug/L	100
71) Naphthalene	13.490	128	651109	55.702	ug/L	99
72) 1,2,3-Trichlorobenzene	13.728	180	255921	50.702	ug/L	100

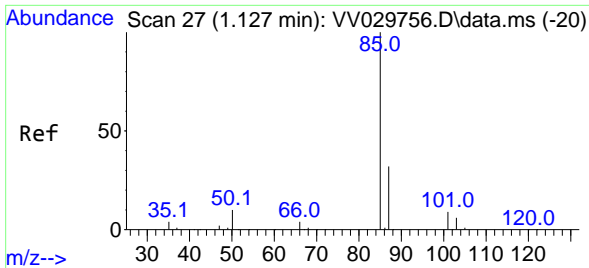
(#) = qualifier out of range (m) = manual integration (+) = signals summed

Data Path : Z:\voasrv\HPCHEM1\MSVOA\_V\Data\VV122222\  
 Data File : VV029756.D  
 Acq On : 22 Dec 2022 10:49  
 Operator : SY/MD  
 Sample : VSTDC0050  
 Misc : 5.0mL/MSVOA\_V/WATER  
 ALS Vial : 2 Sample Multiplier: 1

Instrument :  
 MSVOA\_V  
 ClientSampleId :  
 VSTD050395

Quant Time: Dec 23 02:08:53 2022  
 Quant Method : Z:\voasrv\HPCHEM1\MSVOA\_V\Method\SFAMVLM120722WMA.M  
 Quant Title : VOC Analysis  
 QLast Update : Wed Dec 21 00:15:13 2022  
 Response via : Initial Calibration

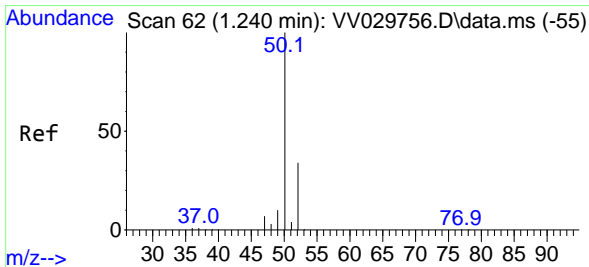
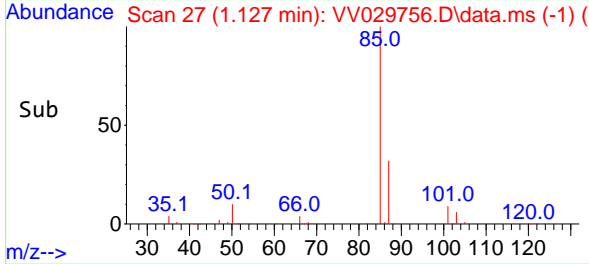
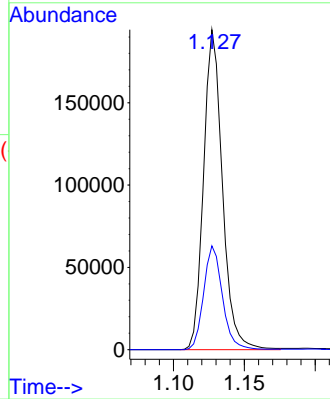
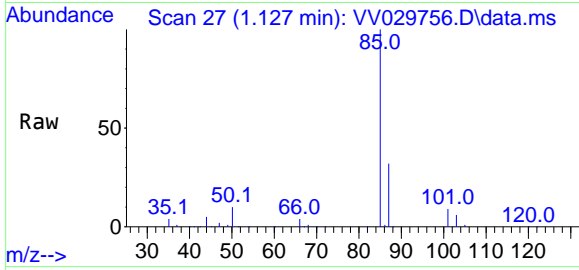




#2  
 Dichlorodifluoromethane  
 Concen: 46.405 ug/L  
 RT: 1.127 min Scan# 21  
 Delta R.T. -0.000 min  
 Lab File: VV029756.D  
 Acq: 22 Dec 2022 10:49

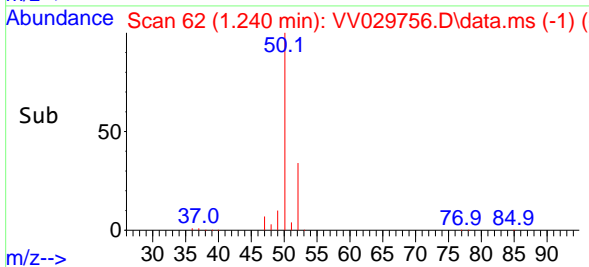
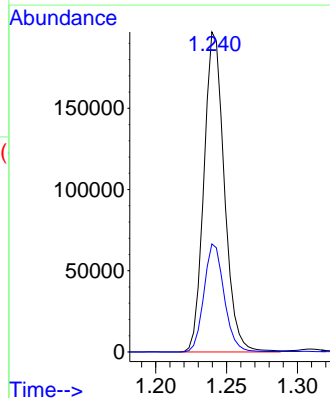
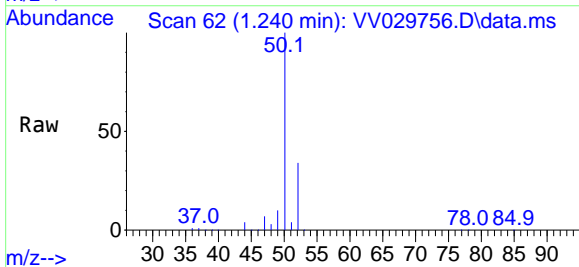
Instrument : MSVOA\_V  
 ClientSampleId : VSTD050395

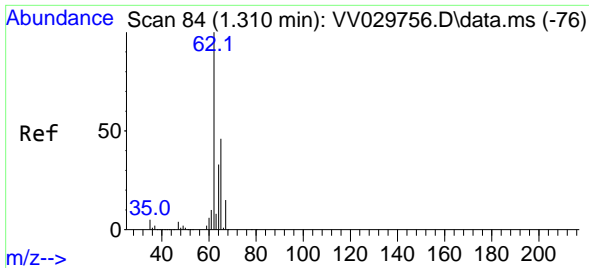
Tgt Ion: 85 Resp: 179574  
 Ion Ratio Lower Upper  
 85 100  
 87 32.4 25.9 38.9



#3  
 Chloromethane  
 Concen: 44.653 ug/L  
 RT: 1.240 min Scan# 62  
 Delta R.T. -0.000 min  
 Lab File: VV029756.D  
 Acq: 22 Dec 2022 10:49

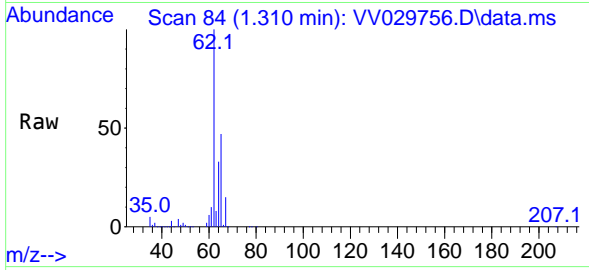
Tgt Ion: 50 Resp: 197012  
 Ion Ratio Lower Upper  
 50 100  
 52 33.8 23.3 43.3



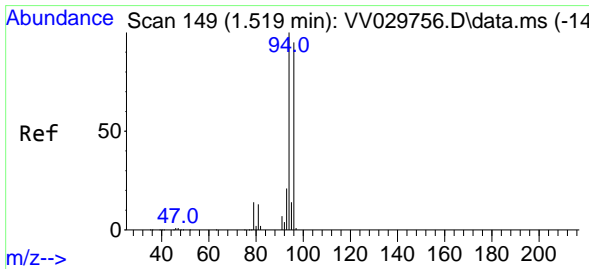
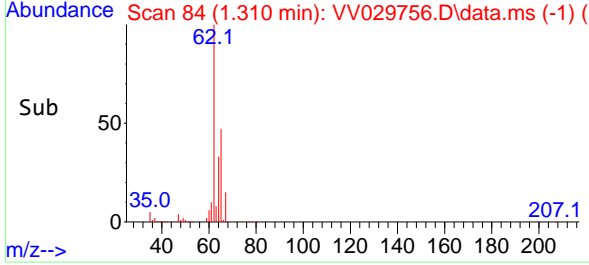
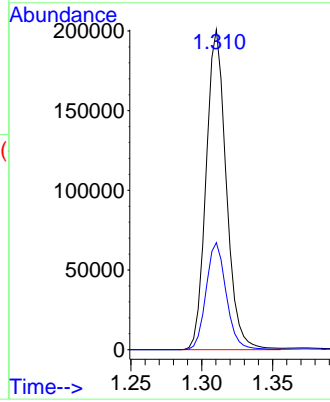


#5  
 Vinyl chloride  
 Concen: 53.794 ug/L  
 RT: 1.310 min Scan# 84  
 Delta R.T. -0.000 min  
 Lab File: VV029756.D  
 Acq: 22 Dec 2022 10:49

Instrument : MSVOA\_V  
 ClientSampleId : VSTD050395

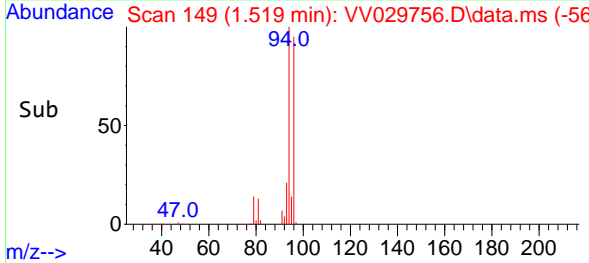
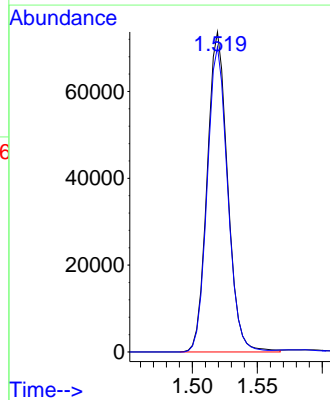
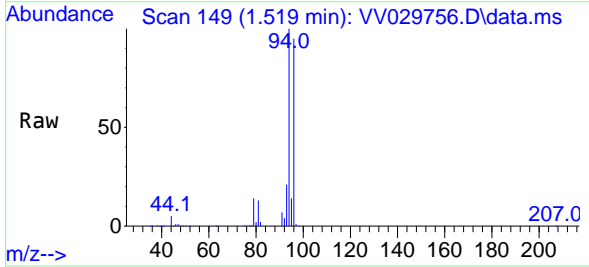


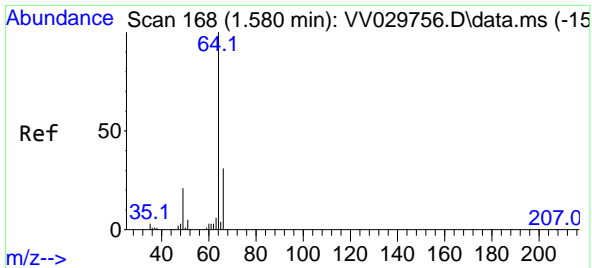
Tgt Ion: 62 Resp: 198578  
 Ion Ratio Lower Upper  
 62 100  
 64 33.4 22.5 41.9



#6  
 Bromomethane  
 Concen: 54.472 ug/L  
 RT: 1.519 min Scan# 149  
 Delta R.T. -0.000 min  
 Lab File: VV029756.D  
 Acq: 22 Dec 2022 10:49

Tgt Ion: 94 Resp: 80909  
 Ion Ratio Lower Upper  
 94 100  
 96 95.4 65.1 120.9

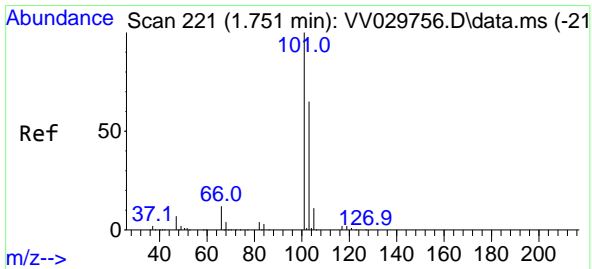
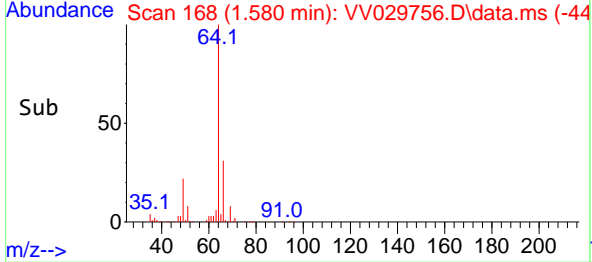
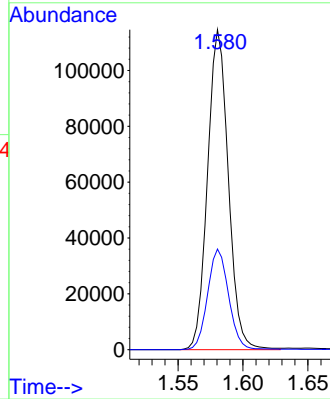
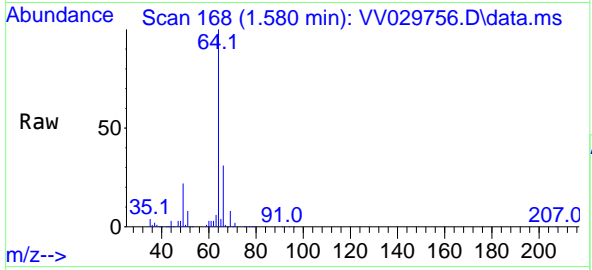




#8  
 Chloroethane  
 Concen: 61.913 ug/L  
 RT: 1.580 min Scan# 11  
 Delta R.T. -0.000 min  
 Lab File: VV029756.D  
 Acq: 22 Dec 2022 10:49

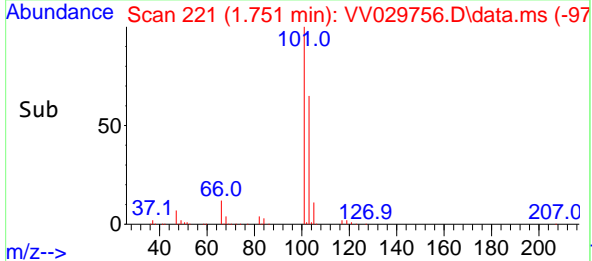
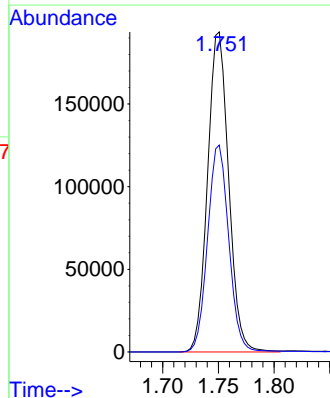
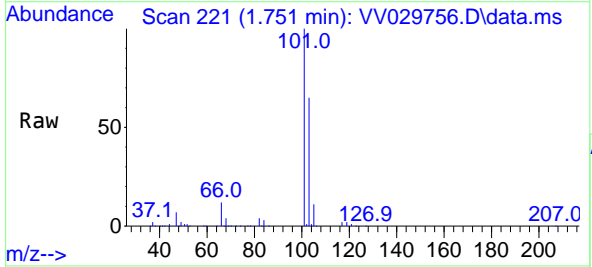
Instrument : MSVOA\_V  
 ClientSampleId : VSTD050395

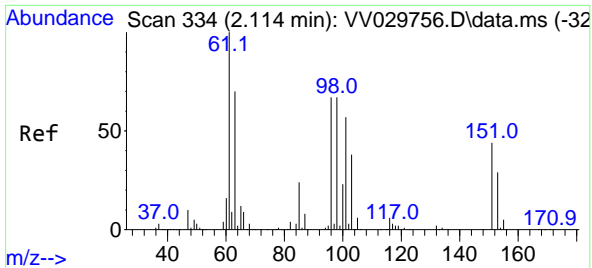
Tgt Ion: 64 Resp: 127263  
 Ion Ratio Lower Upper  
 64 100  
 66 31.5 22.5 41.9



#9  
 Trichlorofluoromethane  
 Concen: 55.180 ug/L  
 RT: 1.751 min Scan# 221  
 Delta R.T. -0.000 min  
 Lab File: VV029756.D  
 Acq: 22 Dec 2022 10:49

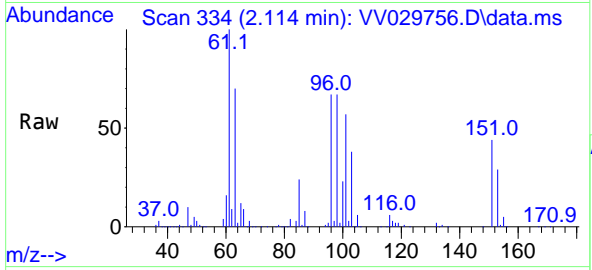
Tgt Ion: 101 Resp: 254995  
 Ion Ratio Lower Upper  
 101 100  
 103 64.9 51.8 77.8



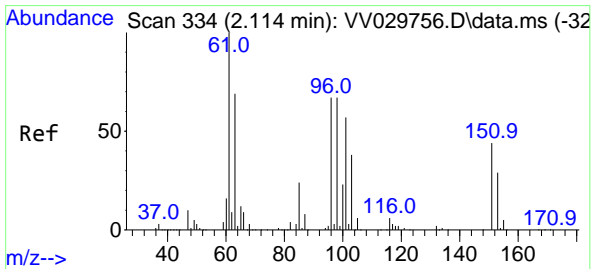
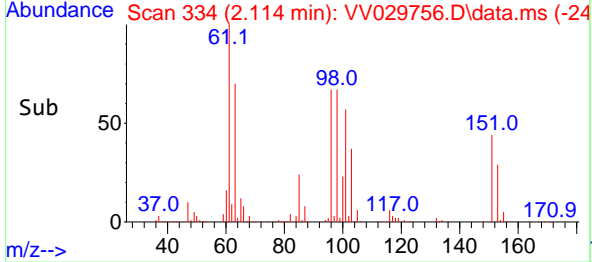
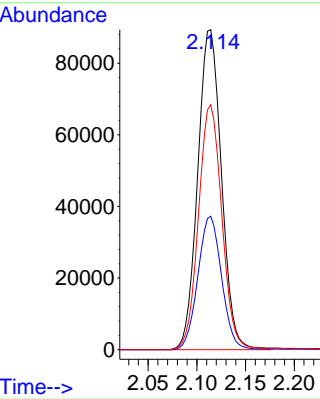


#10  
 1,1,2-Trichloro-1,2,2-trifluoroethane  
 Concen: 58.931 ug/L  
 RT: 2.114 min Scan# 311  
 Delta R.T. -0.000 min  
 Lab File: VV029756.D  
 Acq: 22 Dec 2022 10:49

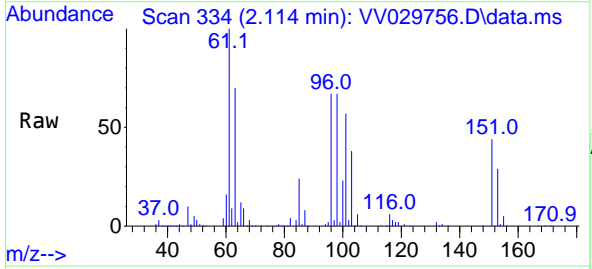
Instrument : MSVOA\_V  
 ClientSampleId : VSTD050395



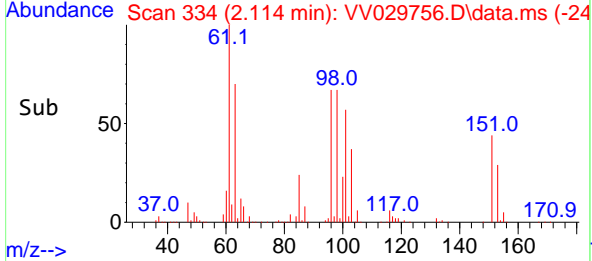
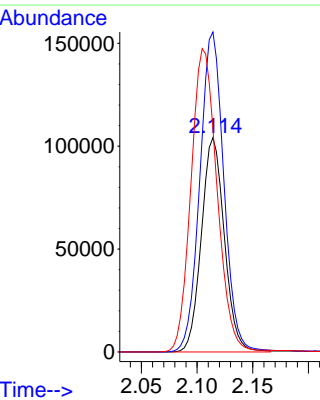
Tgt Ion:101 Resp: 151324  
 Ion Ratio Lower Upper  
 101 100  
 85 41.5 33.6 50.4  
 151 75.5 63.5 95.3

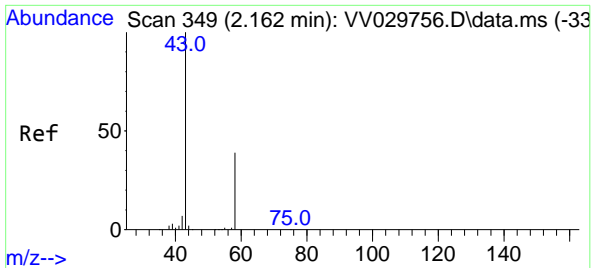


#12  
 1,1-Dichloroethene  
 Concen: 56.846 ug/L  
 RT: 2.114 min Scan# 334  
 Delta R.T. -0.000 min  
 Lab File: VV029756.D  
 Acq: 22 Dec 2022 10:49



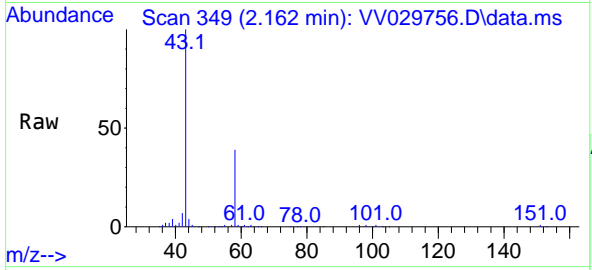
Tgt Ion: 96 Resp: 149278  
 Ion Ratio Lower Upper  
 96 100  
 61 149.3 103.3 191.9  
 63 104.4 77.3 143.7



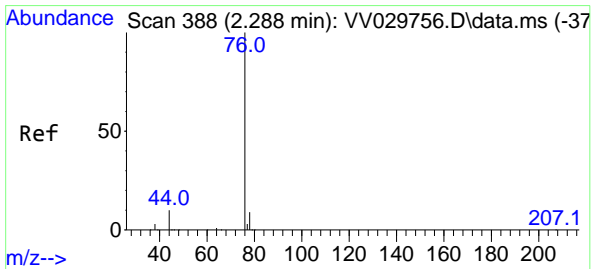
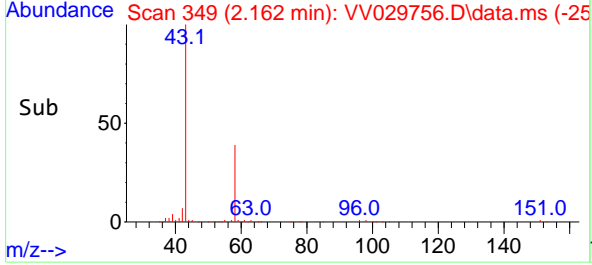
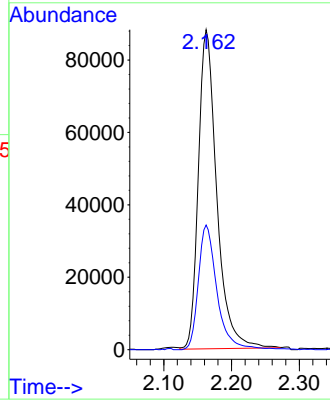


#13  
 Acetone  
 Concen: 138.904 ug/L  
 RT: 2.162 min Scan# 349  
 Delta R.T. -0.000 min  
 Lab File: VV029756.D  
 Acq: 22 Dec 2022 10:49

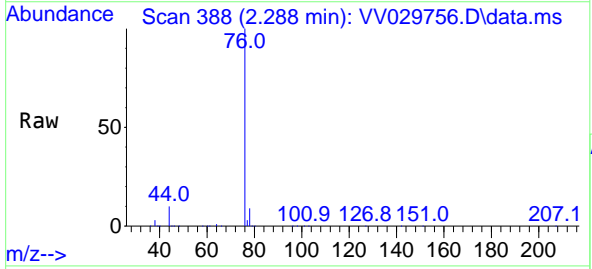
Instrument : MSVOA\_V  
 ClientSampleId : VSTD050395



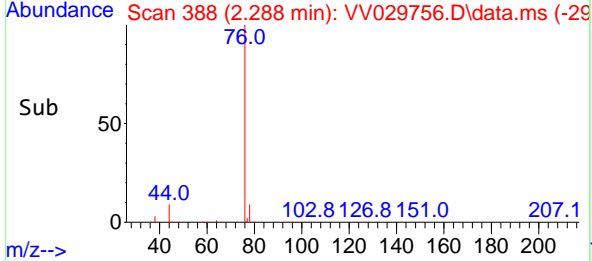
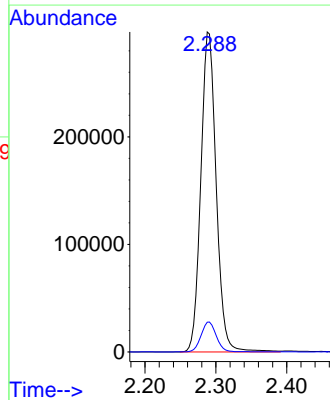
Tgt Ion: 43 Resp: 166066  
 Ion Ratio Lower Upper  
 43 100  
 58 39.4 0.0 74.8



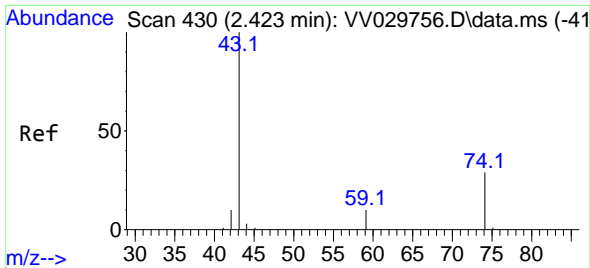
#14  
 Carbon disulfide  
 Concen: 51.265 ug/L  
 RT: 2.288 min Scan# 388  
 Delta R.T. -0.003 min  
 Lab File: VV029756.D  
 Acq: 22 Dec 2022 10:49



Tgt Ion: 76 Resp: 448044  
 Ion Ratio Lower Upper  
 76 100  
 78 9.3 7.4 11.2

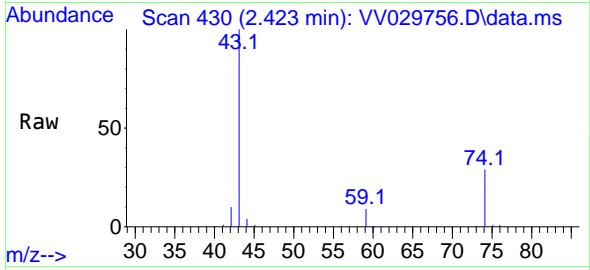




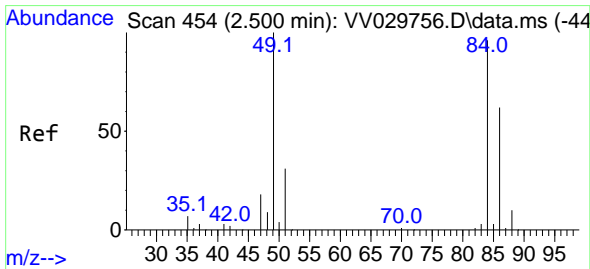
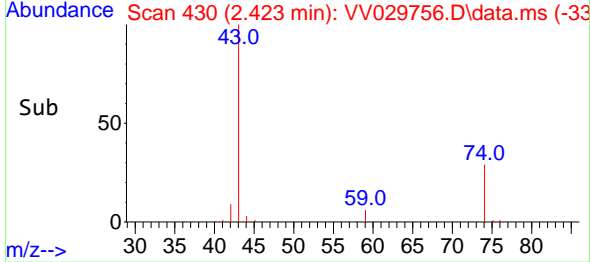
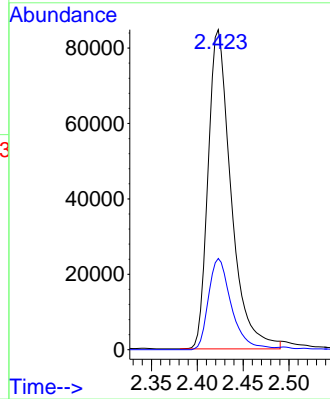


#15  
 Methyl Acetate  
 Concen: 54.297 ug/L  
 RT: 2.423 min Scan# 41  
 Delta R.T. -0.000 min  
 Lab File: VV029756.D  
 Acq: 22 Dec 2022 10:49

Instrument : MSVOA\_V  
 ClientSampleId : VSTD050395

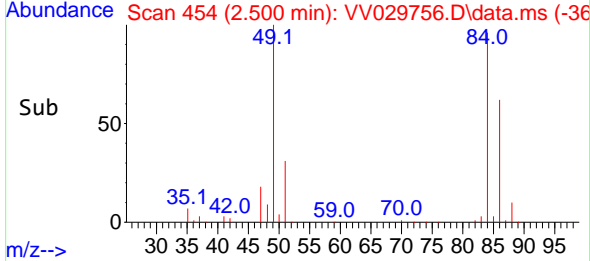
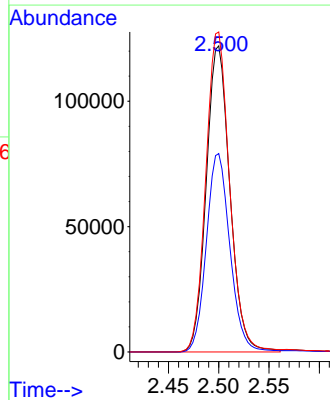
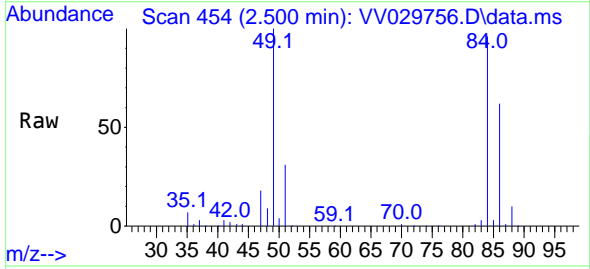


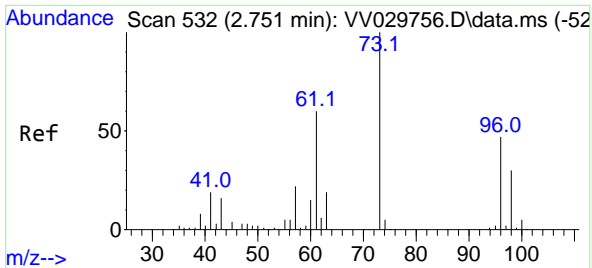
Tgt Ion: 43 Resp: 147895  
 Ion Ratio Lower Upper  
 43 100  
 74 28.4 23.5 35.3



#16  
 Methylene chloride  
 Concen: 61.330 ug/L  
 RT: 2.500 min Scan# 454  
 Delta R.T. -0.000 min  
 Lab File: VV029756.D  
 Acq: 22 Dec 2022 10:49

Tgt Ion: 84 Resp: 200250  
 Ion Ratio Lower Upper  
 84 100  
 86 64.8 46.0 85.4  
 49 104.5 72.2 134.0



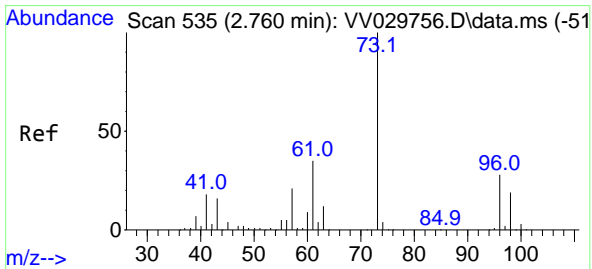
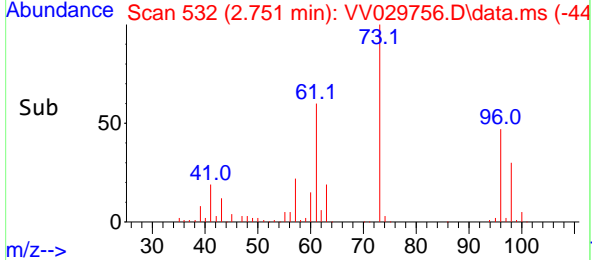
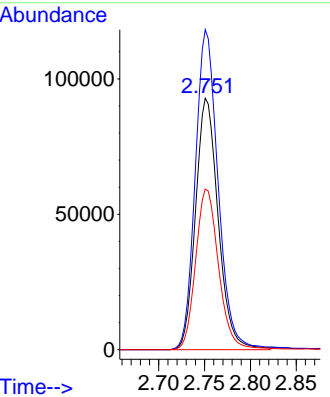
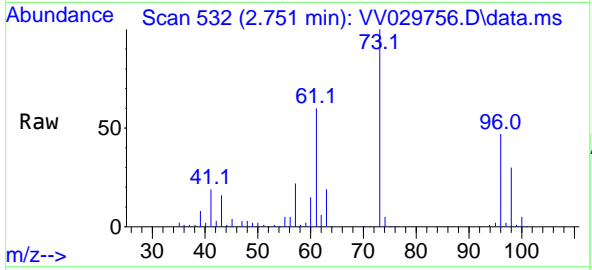


#17  
 trans-1,2-Dichloroethene  
 Concen: 52.852 ug/L  
 RT: 2.751 min Scan# 511  
 Delta R.T. -0.003 min  
 Lab File: VV029756.D  
 Acq: 22 Dec 2022 10:49

Instrument : MSVOA\_V  
 ClientSampleId : VSTD050395

Tgt Ion: 96 Resp: 159919

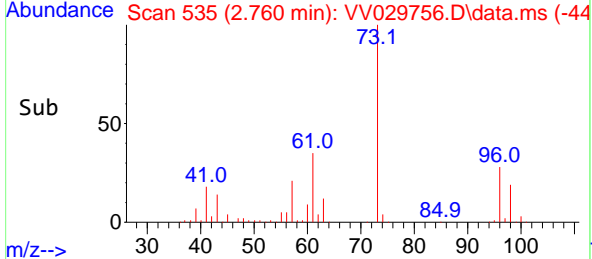
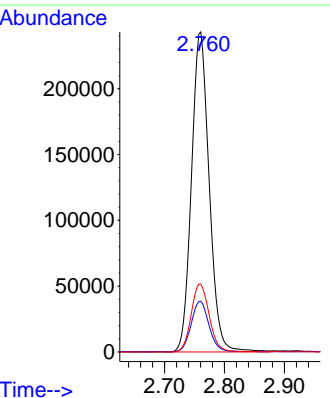
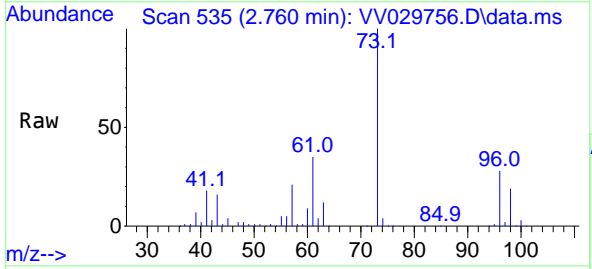
Ion	Ratio	Lower	Upper
96	100		
61	127.2	86.4	160.4
98	63.8	43.4	80.6

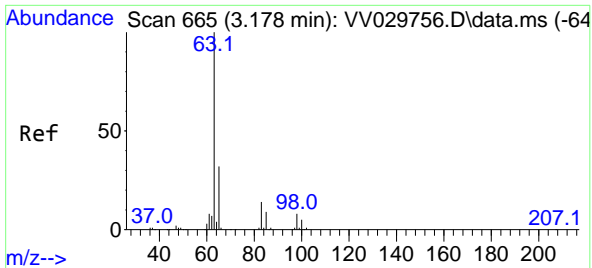


#18  
 Methyl tert-butyl Ether  
 Concen: 53.972 ug/L  
 RT: 2.760 min Scan# 535  
 Delta R.T. -0.000 min  
 Lab File: VV029756.D  
 Acq: 22 Dec 2022 10:49

Tgt Ion: 73 Resp: 500349

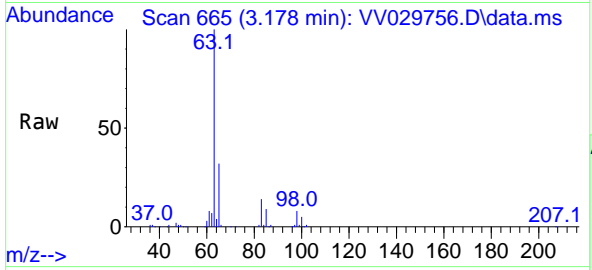
Ion	Ratio	Lower	Upper
73	100		
43	15.8	12.7	19.1
57	21.6	16.7	25.1





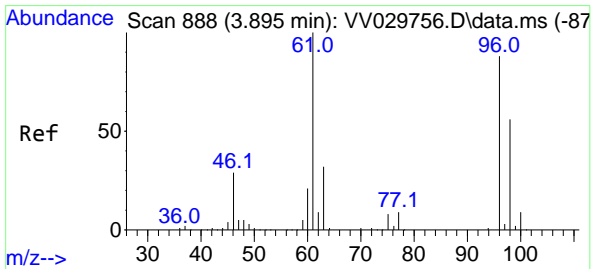
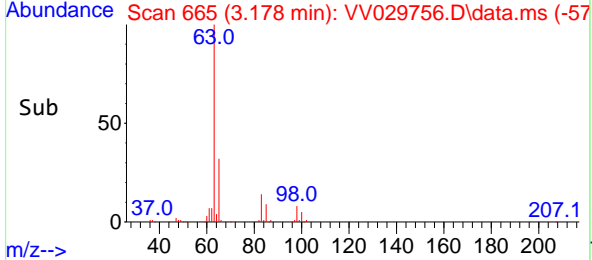
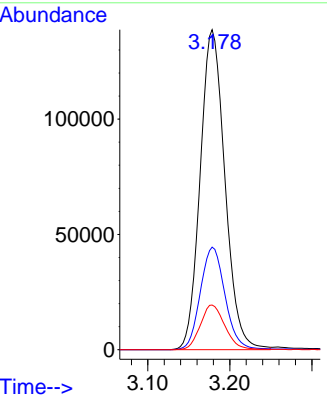
#19  
 1,1-Dichloroethane  
 Concen: 56.144 ug/L  
 RT: 3.178 min Scan# 665  
 Delta R.T. -0.003 min  
 Lab File: VV029756.D  
 Acq: 22 Dec 2022 10:49

Instrument : MSVOA\_V  
 ClientSampleId : VSTD050395

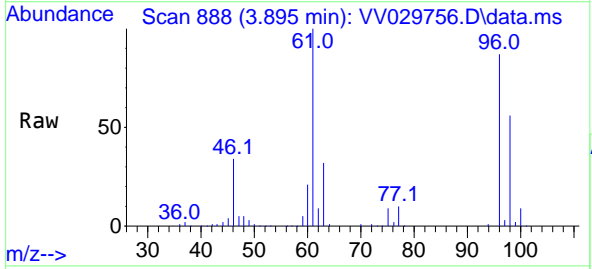


Tgt Ion: 63 Resp: 291027

Ion	Ratio	Lower	Upper
63	100		
65	32.0	22.5	41.7
83	14.0	10.4	19.2

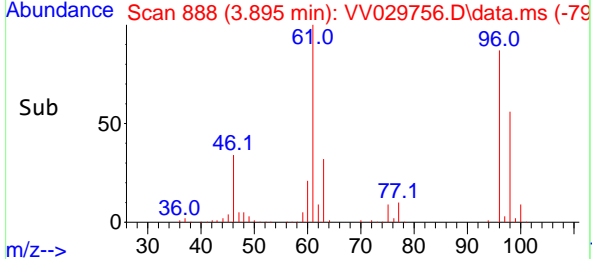
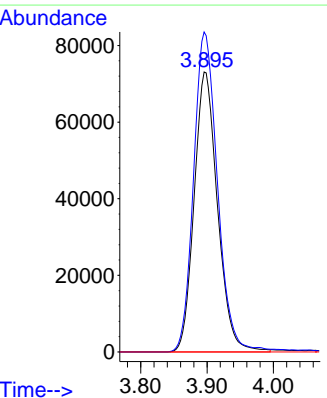


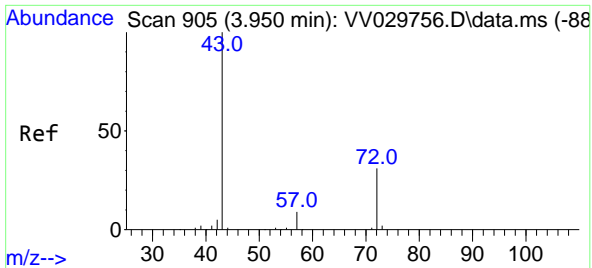
#20  
 cis-1,2-Dichloroethene  
 Concen: 53.897 ug/L  
 RT: 3.895 min Scan# 888  
 Delta R.T. -0.003 min  
 Lab File: VV029756.D  
 Acq: 22 Dec 2022 10:49



Tgt Ion: 96 Resp: 179328

Ion	Ratio	Lower	Upper
96	100		
61	114.3	78.0	144.9
68	0.0	0.0	0.0

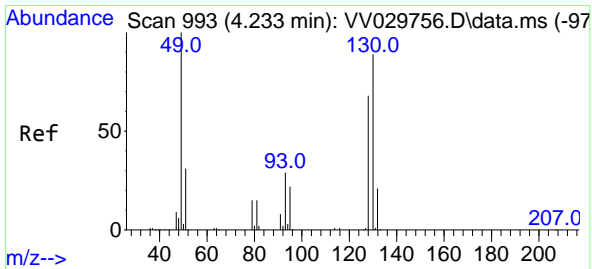
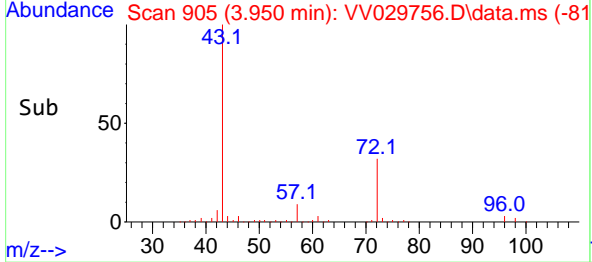
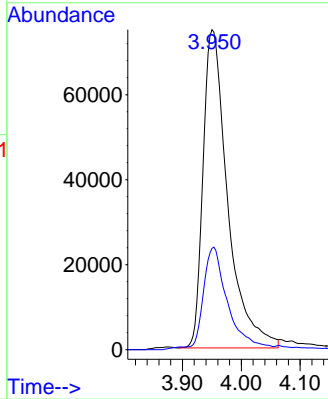
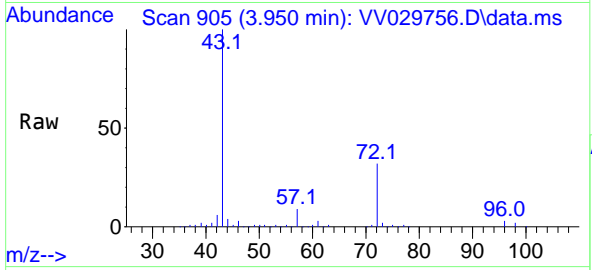




#22  
 2-Butanone  
 Concen: 114.697 ug/L  
 RT: 3.950 min Scan# 905  
 Delta R.T. -0.003 min  
 Lab File: VV029756.D  
 Acq: 22 Dec 2022 10:49

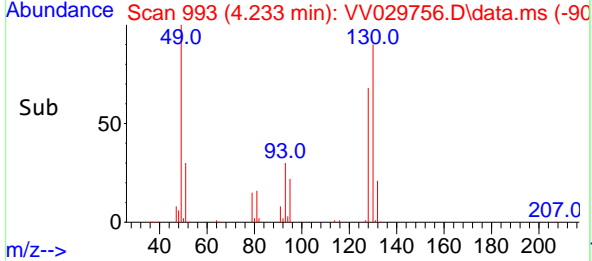
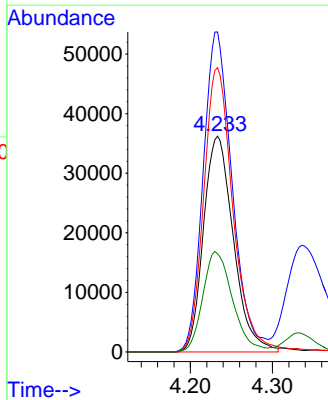
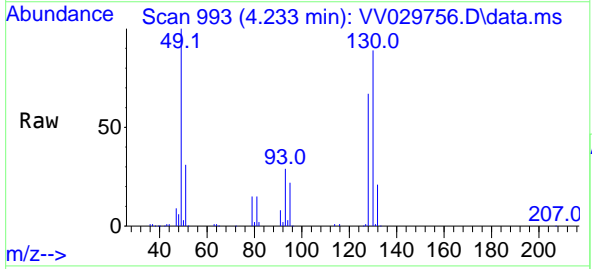
Instrument : MSVOA\_V  
 ClientSampleId : VSTD050395

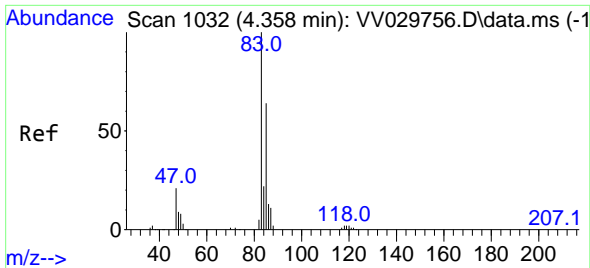
Tgt Ion: 43 Resp: 218191  
 Ion Ratio Lower Upper  
 43 100  
 72 30.5 15.9 47.6



#23  
 Bromochloromethane  
 Concen: 53.413 ug/L  
 RT: 4.233 min Scan# 993  
 Delta R.T. -0.003 min  
 Lab File: VV029756.D  
 Acq: 22 Dec 2022 10:49

Tgt Ion:128 Resp: 91512  
 Ion Ratio Lower Upper  
 128 100  
 49 148.2 92.2 171.2  
 130 131.7 88.3 164.1  
 51 45.5 34.1 51.1

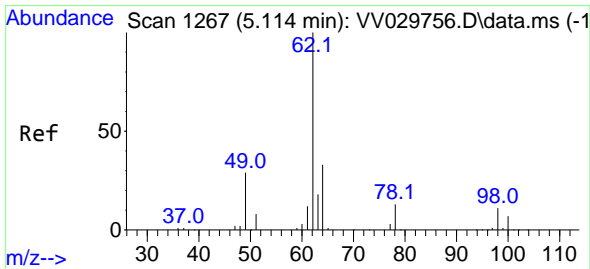
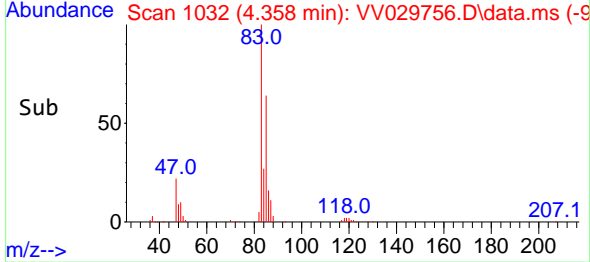
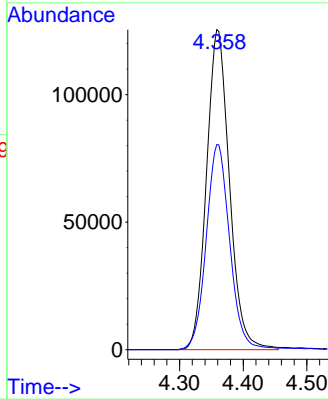
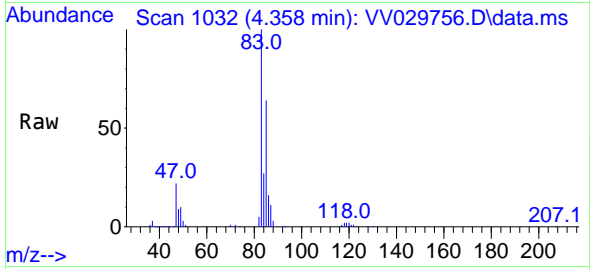




#25  
 Chloroform  
 Concen: 58.541 ug/L  
 RT: 4.358 min Scan# 1032  
 Delta R.T. -0.003 min  
 Lab File: VV029756.D  
 Acq: 22 Dec 2022 10:49

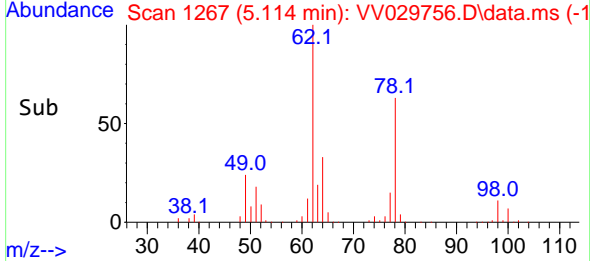
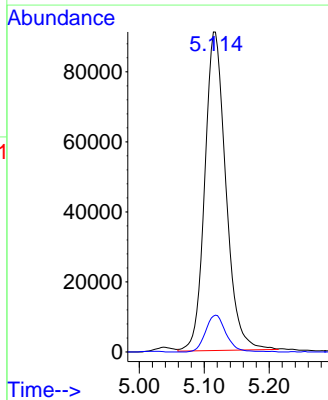
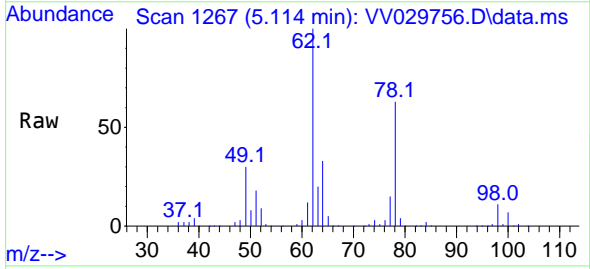
Instrument : MSVOA\_V  
 ClientSampleId : VSTD050395

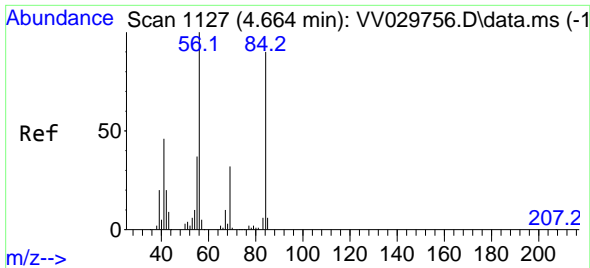
Tgt Ion: 83 Resp: 314596  
 Ion Ratio Lower Upper  
 83 100  
 85 64.1 45.1 83.9



#27  
 1,2-Dichloroethane  
 Concen: 54.200 ug/L  
 RT: 5.114 min Scan# 1267  
 Delta R.T. -0.003 min  
 Lab File: VV029756.D  
 Acq: 22 Dec 2022 10:49

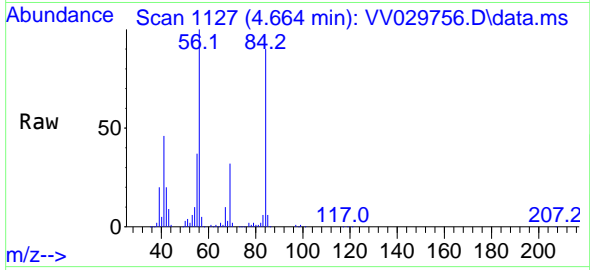
Tgt Ion: 62 Resp: 205751  
 Ion Ratio Lower Upper  
 62 100  
 98 11.2 9.4 14.0



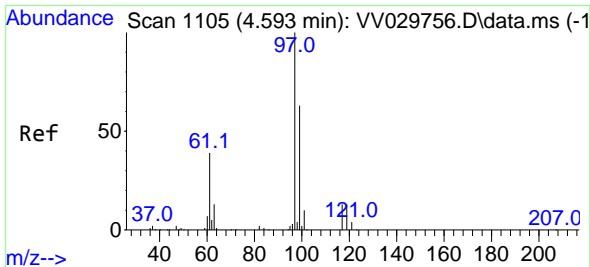
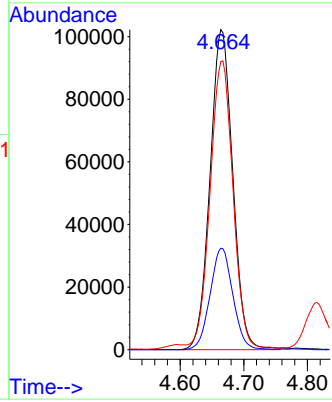
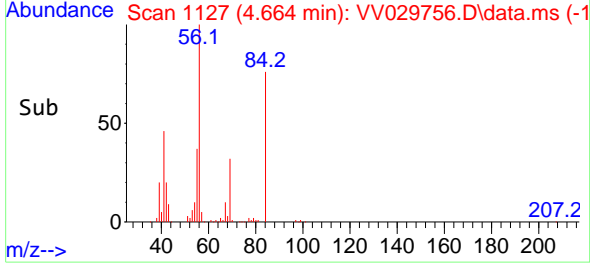


#29  
 Cyclohexane  
 Concen: 51.011 ug/L  
 RT: 4.664 min Scan# 1127  
 Delta R.T. -0.003 min  
 Lab File: VV029756.D  
 Acq: 22 Dec 2022 10:49

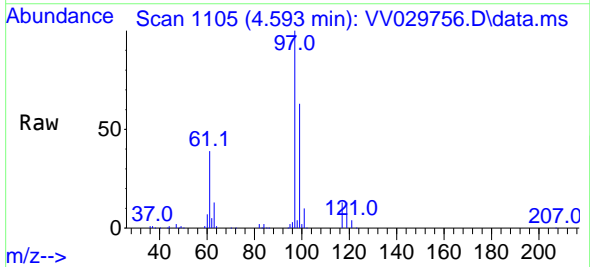
Instrument : MSVOA\_V  
 ClientSampleId : VSTD050395



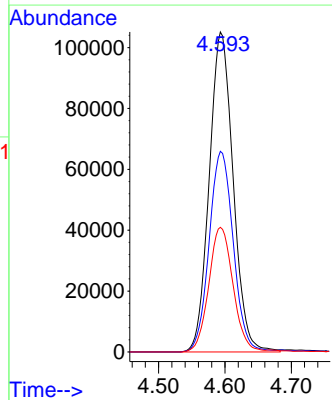
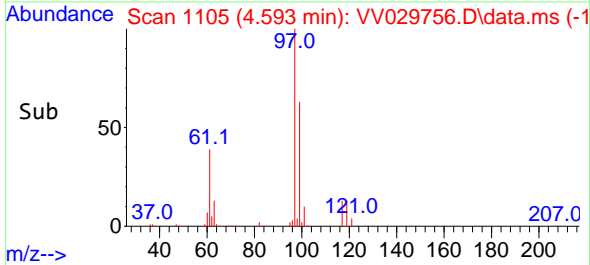
Tgt Ion: 56 Resp: 253730  
 Ion Ratio Lower Upper  
 56 100  
 69 31.7 25.8 38.8  
 84 89.4 76.6 114.8

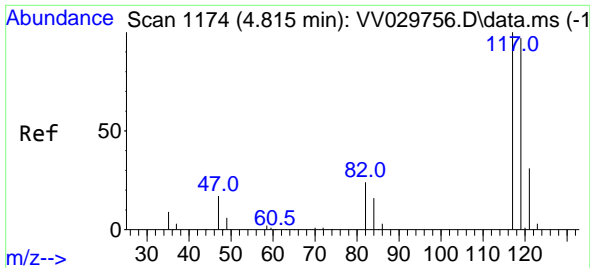


#30  
 1,1,1-Trichloroethane  
 Concen: 52.629 ug/L  
 RT: 4.593 min Scan# 1105  
 Delta R.T. -0.003 min  
 Lab File: VV029756.D  
 Acq: 22 Dec 2022 10:49



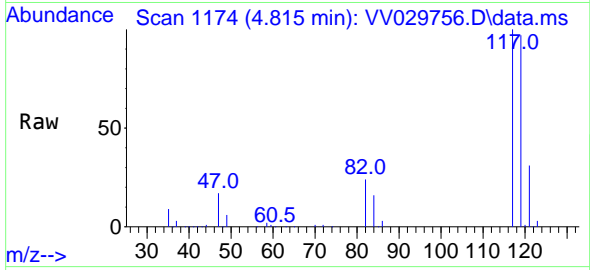
Tgt Ion: 97 Resp: 263280  
 Ion Ratio Lower Upper  
 97 100  
 99 63.4 52.1 78.1  
 61 39.5 31.8 47.8



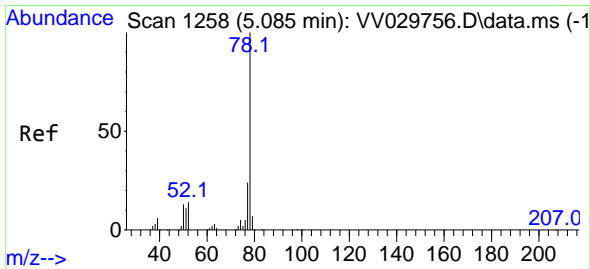
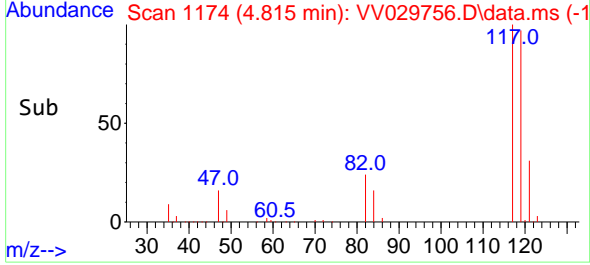
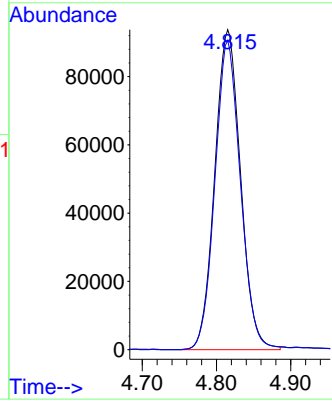


#31  
 Carbon tetrachloride  
 Concen: 51.777 ug/L  
 RT: 4.815 min Scan# 1174  
 Delta R.T. -0.003 min  
 Lab File: VV029756.D  
 Acq: 22 Dec 2022 10:49

Instrument : MSVOA\_V  
 ClientSampleId : VSTD050395

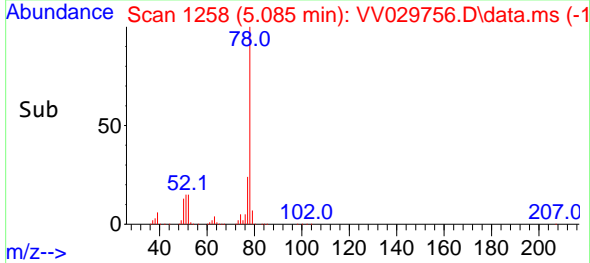
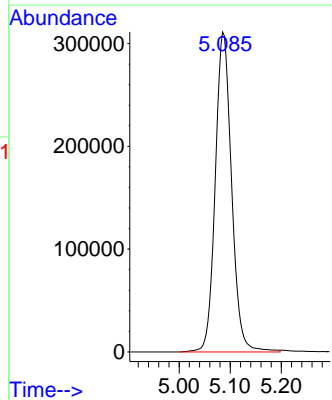
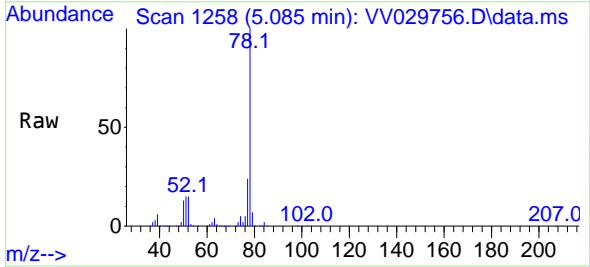


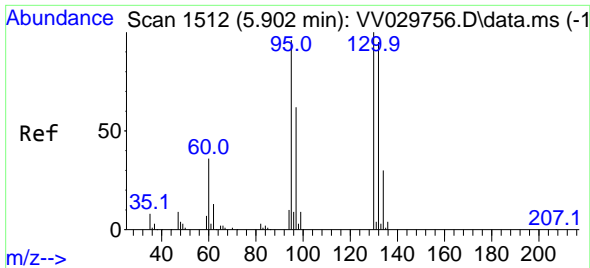
Tgt Ion:117 Resp: 226187  
 Ion Ratio Lower Upper  
 117 100  
 119 95.7 76.7 115.1



#33  
 Benzene  
 Concen: 53.368 ug/L  
 RT: 5.085 min Scan# 1258  
 Delta R.T. -0.003 min  
 Lab File: VV029756.D  
 Acq: 22 Dec 2022 10:49

Tgt Ion: 78 Resp: 690714



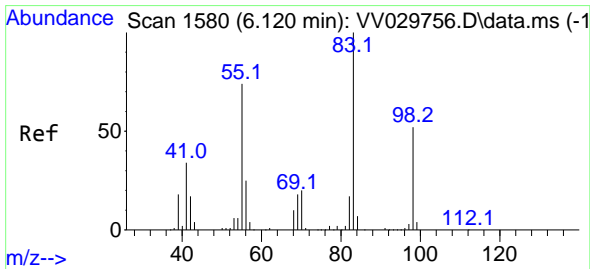
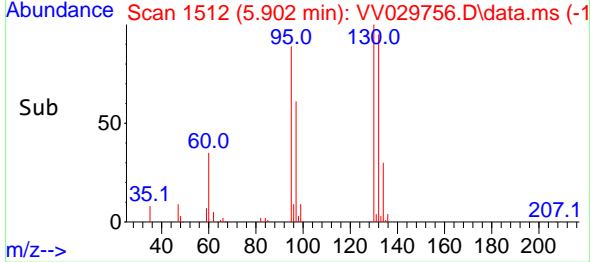
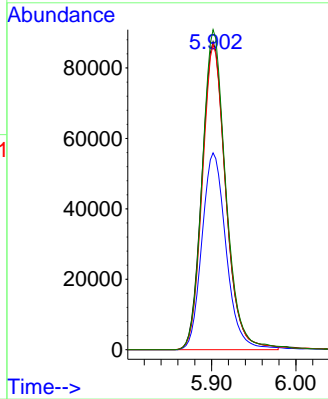
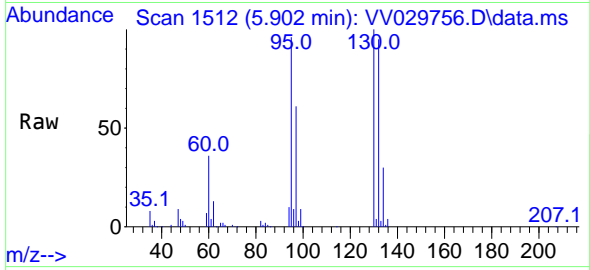


#34  
 Trichloroethene  
 Concen: 53.142 ug/L  
 RT: 5.902 min Scan# 1512  
 Delta R.T. -0.003 min  
 Lab File: VV029756.D  
 Acq: 22 Dec 2022 10:49

Instrument : MSVOA\_V  
 ClientSampleId : VSTD050395

Tgt Ion: 95 Resp: 172352

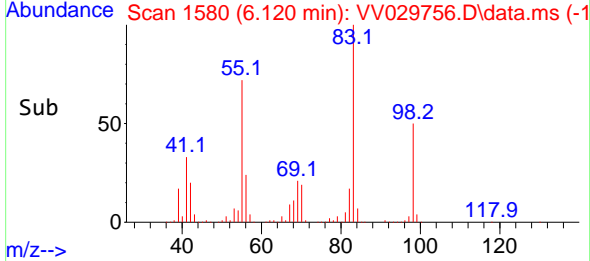
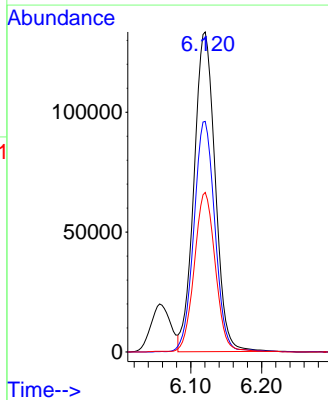
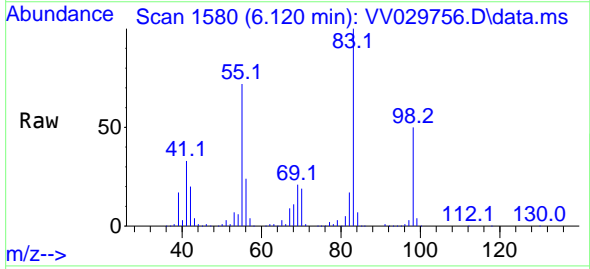
Ion	Ratio	Lower	Upper
95	100		
97	63.9	44.0	81.8
132	99.1	69.9	129.9
130	103.9	73.7	136.9



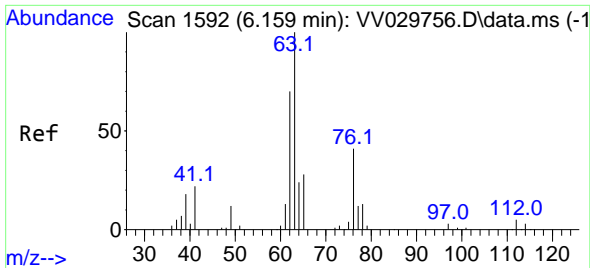
#35  
 Methylcyclohexane  
 Concen: 50.227 ug/L  
 RT: 6.120 min Scan# 1580  
 Delta R.T. -0.003 min  
 Lab File: VV029756.D  
 Acq: 22 Dec 2022 10:49

Tgt Ion: 83 Resp: 276666

Ion	Ratio	Lower	Upper
83	100		
55	71.1	55.5	83.3
98	49.7	39.8	59.8



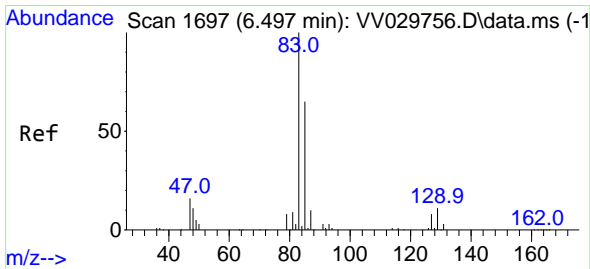
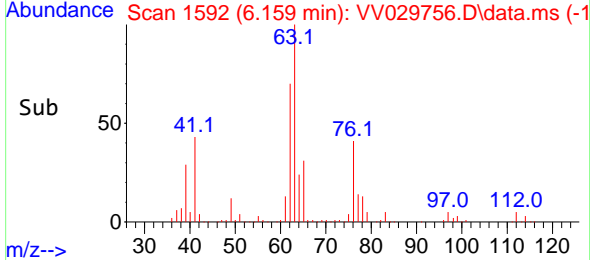
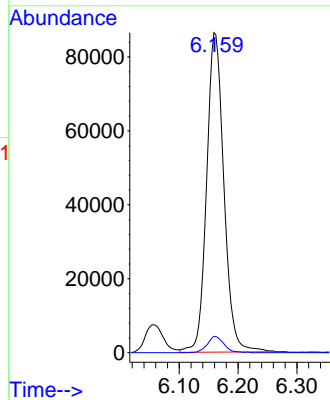
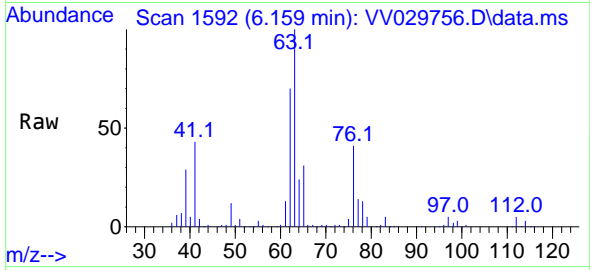




#37  
 1,2-Dichloropropane  
 Concen: 56.437 ug/L  
 RT: 6.159 min Scan# 1592  
 Delta R.T. -0.003 min  
 Lab File: VV029756.D  
 Acq: 22 Dec 2022 10:49

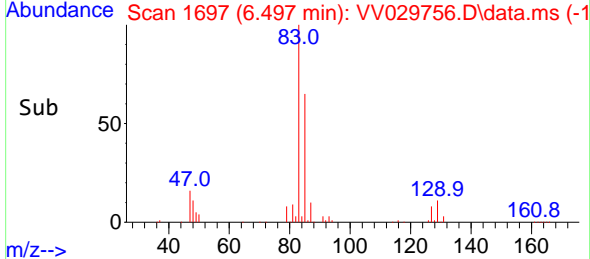
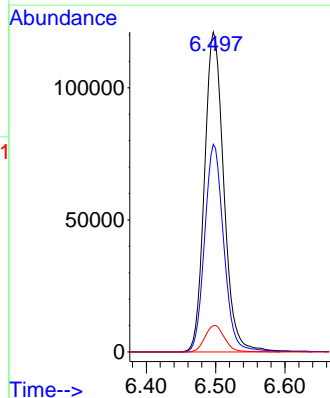
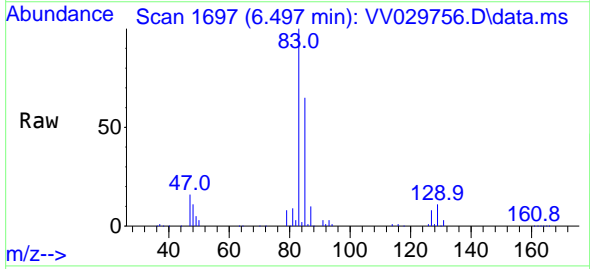
Instrument : MSVOA\_V  
 ClientSampleId : VSTD050395

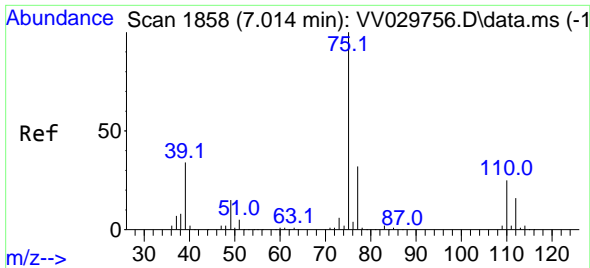
Tgt Ion: 63 Resp: 176299  
 Ion Ratio Lower Upper  
 63 100  
 112 4.9 3.9 5.9



#38  
 Bromodichloromethane  
 Concen: 54.244 ug/L  
 RT: 6.497 min Scan# 1697  
 Delta R.T. -0.003 min  
 Lab File: VV029756.D  
 Acq: 22 Dec 2022 10:49

Tgt Ion: 83 Resp: 233915  
 Ion Ratio Lower Upper  
 83 100  
 85 64.9 45.3 84.1  
 127 8.2 7.0 10.6

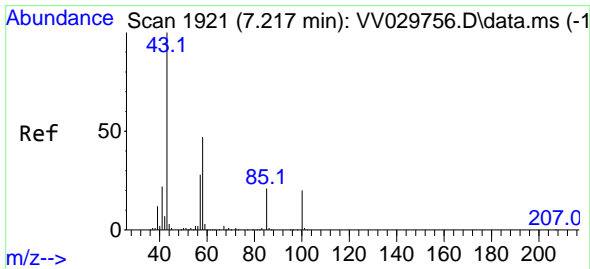
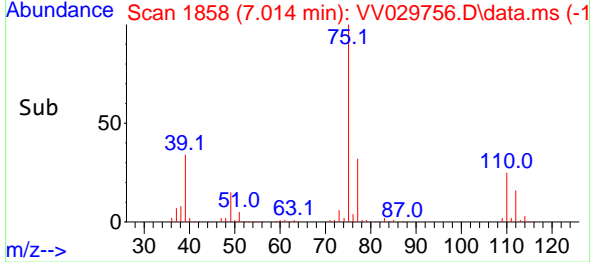
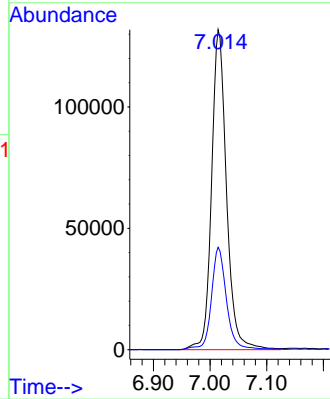
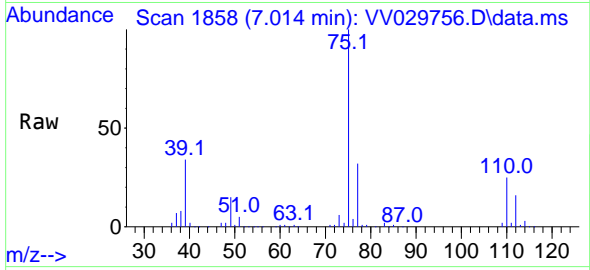




#39  
 cis-1,3-Dichloropropene  
 Concen: 47.009 ug/L  
 RT: 7.014 min Scan# 1858  
 Delta R.T. -0.003 min  
 Lab File: VV029756.D  
 Acq: 22 Dec 2022 10:49

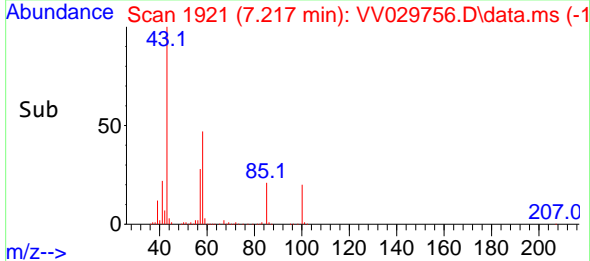
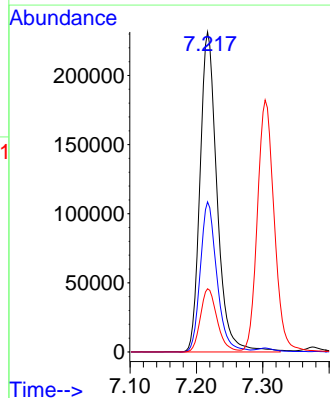
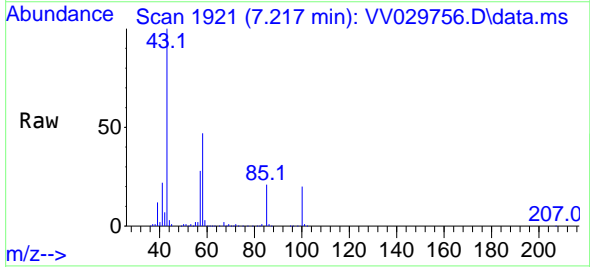
Instrument : MSVOA\_V  
 ClientSampleId : VSTD050395

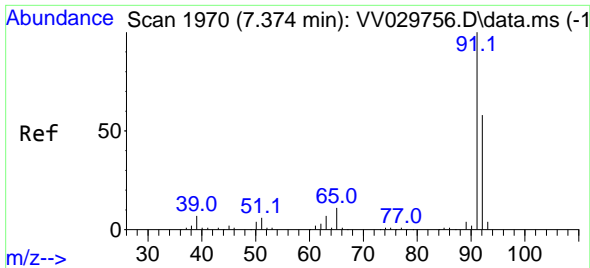
Tgt Ion: 75 Resp: 241508  
 Ion Ratio Lower Upper  
 75 100  
 77 32.0 21.9 40.7



#40  
 4-Methyl-2-pentanone  
 Concen: 111.037 ug/L  
 RT: 7.217 min Scan# 1921  
 Delta R.T. -0.003 min  
 Lab File: VV029756.D  
 Acq: 22 Dec 2022 10:49

Tgt Ion: 43 Resp: 413559  
 Ion Ratio Lower Upper  
 43 100  
 58 45.7 37.5 56.3  
 100 19.4 16.7 25.1

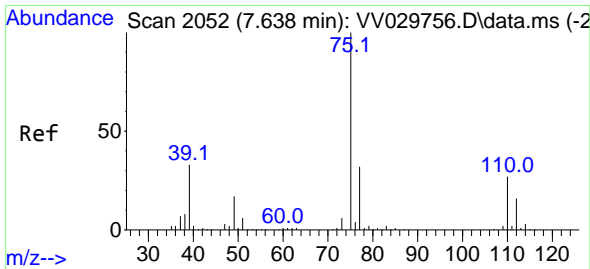
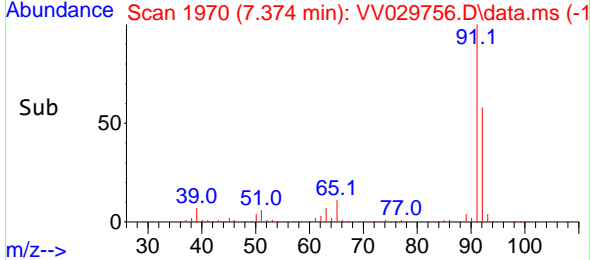
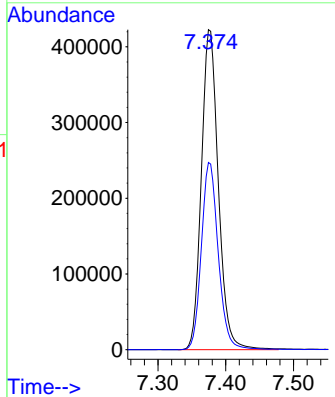
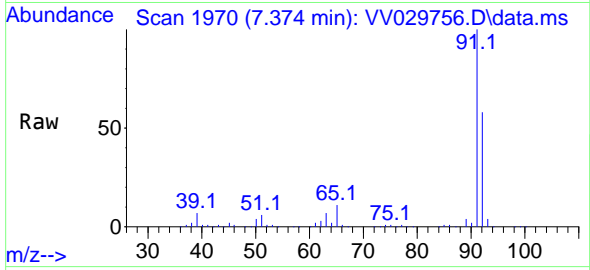




#42  
 Toluene  
 Concen: 52.840 ug/L  
 RT: 7.374 min Scan# 1970  
 Delta R.T. -0.003 min  
 Lab File: VV029756.D  
 Acq: 22 Dec 2022 10:49

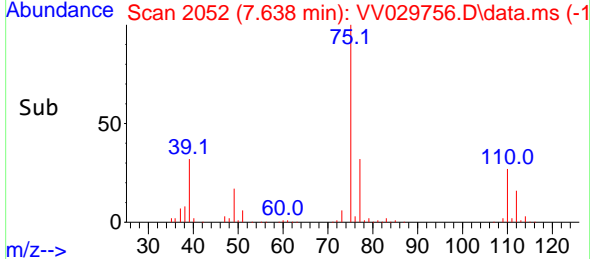
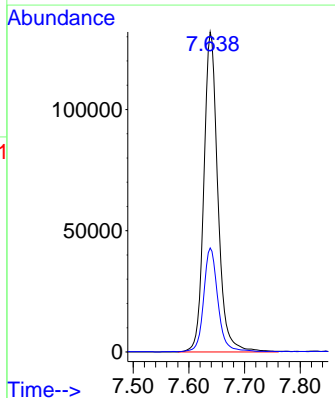
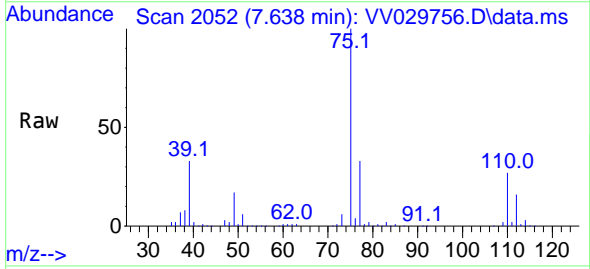
Instrument : MSVOA\_V  
 ClientSampleId : VSTD050395

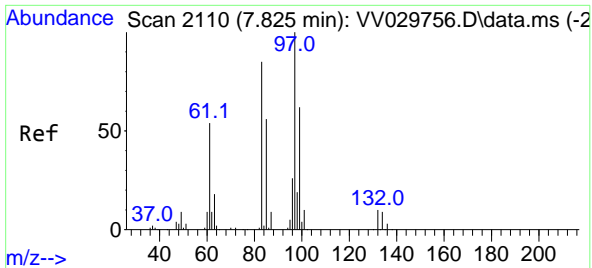
Tgt Ion: 91 Resp: 736082  
 Ion Ratio Lower Upper  
 91 100  
 92 58.5 40.6 75.4



#44  
 trans-1,3-Dichloropropene  
 Concen: 47.441 ug/L  
 RT: 7.638 min Scan# 2052  
 Delta R.T. -0.003 min  
 Lab File: VV029756.D  
 Acq: 22 Dec 2022 10:49

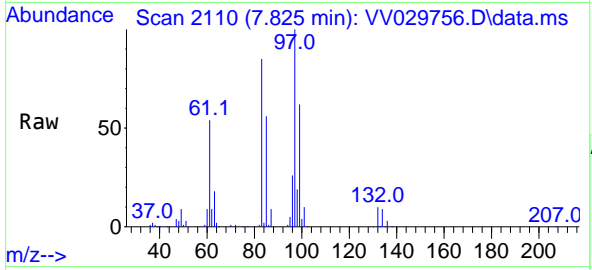
Tgt Ion: 75 Resp: 230814  
 Ion Ratio Lower Upper  
 75 100  
 77 32.5 22.3 41.5





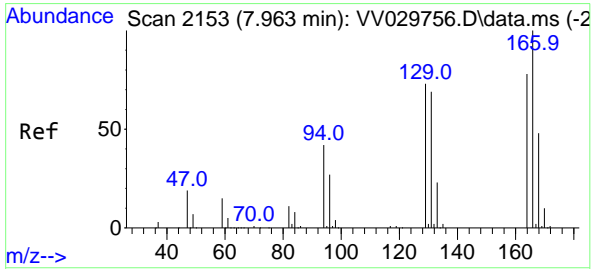
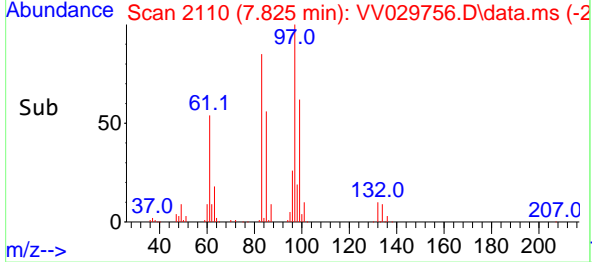
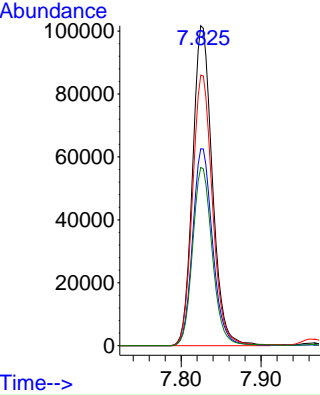
#45  
 1,1,2-Trichloroethane  
 Concen: 54.102 ug/L  
 RT: 7.825 min Scan# 2110  
 Delta R.T. -0.003 min  
 Lab File: VV029756.D  
 Acq: 22 Dec 2022 10:49

Instrument : MSVOA\_V  
 ClientSampleId : VSTD050395



Tgt Ion: 97 Resp: 174601

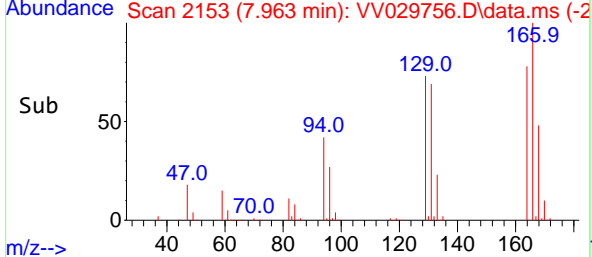
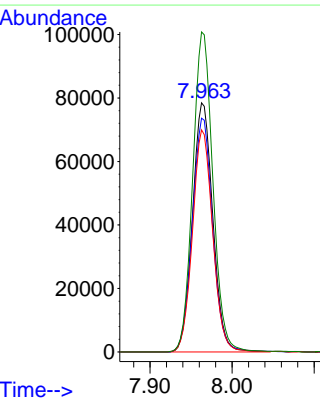
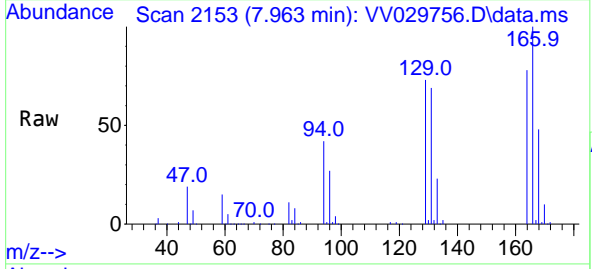
Ion	Ratio	Lower	Upper
97	100		
99	61.6	43.8	81.3
83	84.6	58.6	108.8
85	55.7	37.2	69.2

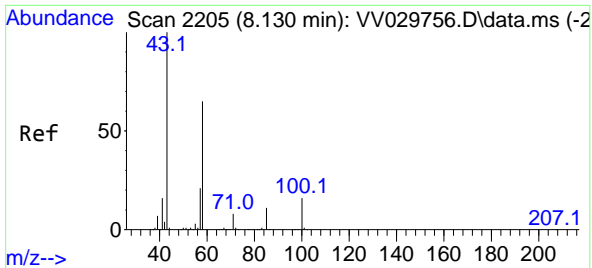


#46  
 Tetrachloroethene  
 Concen: 51.916 ug/L  
 RT: 7.963 min Scan# 2153  
 Delta R.T. -0.003 min  
 Lab File: VV029756.D  
 Acq: 22 Dec 2022 10:49

Tgt Ion: 164 Resp: 135372

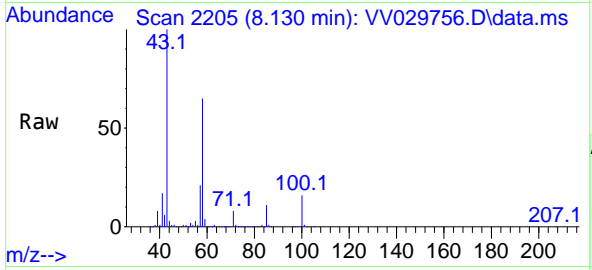
Ion	Ratio	Lower	Upper
164	100		
129	93.8	65.3	121.3
131	89.2	63.1	117.1
166	128.5	90.8	168.6





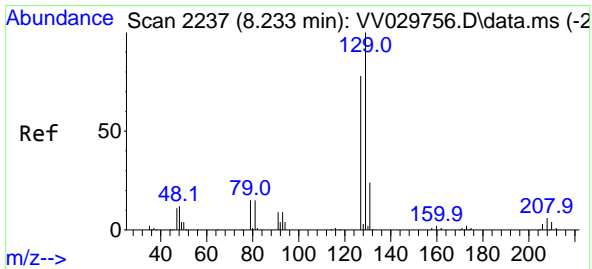
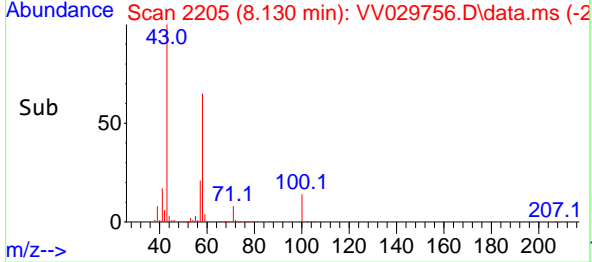
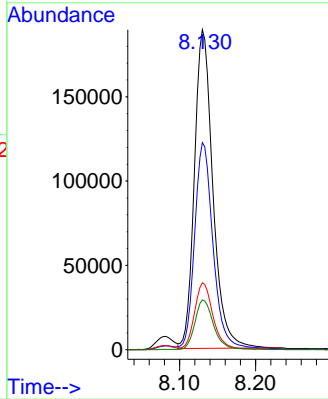
#48  
 2-Hexanone  
 Concen: 112.233 ug/L  
 RT: 8.130 min Scan# 21  
 Delta R.T. -0.003 min  
 Lab File: VV029756.D  
 Acq: 22 Dec 2022 10:49

Instrument : MSVOA\_V  
 ClientSampleId : VSTD050395

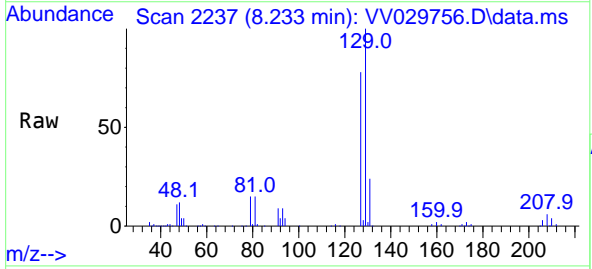


Tgt Ion: 43 Resp: 319361

Ion	Ratio	Lower	Upper
43	100		
58	64.1	54.1	81.1
57	20.5	17.4	26.0
100	15.6	13.6	20.4

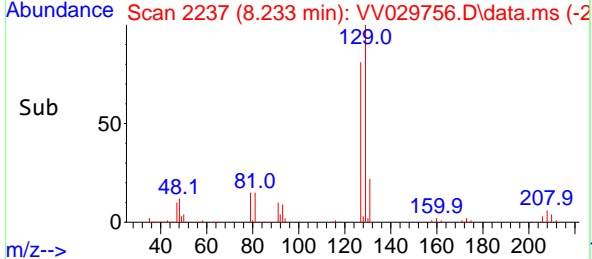
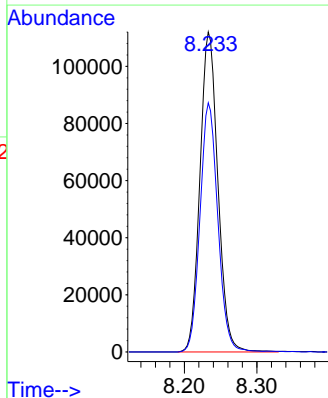


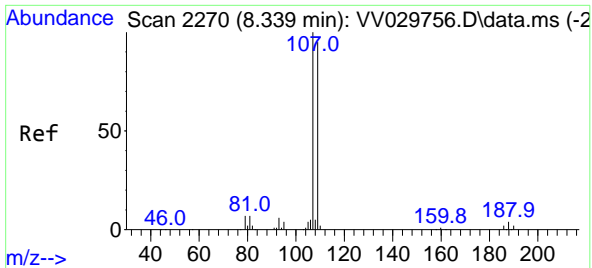
#49  
 Dibromochloromethane  
 Concen: 54.100 ug/L  
 RT: 8.233 min Scan# 2237  
 Delta R.T. -0.003 min  
 Lab File: VV029756.D  
 Acq: 22 Dec 2022 10:49



Tgt Ion: 129 Resp: 192763

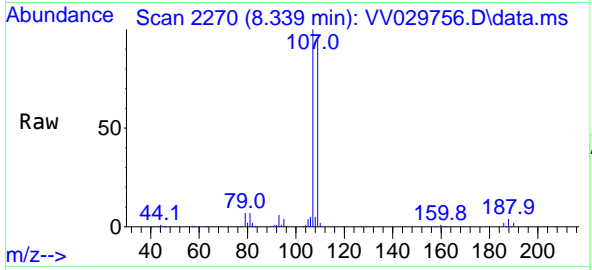
Ion	Ratio	Lower	Upper
129	100		
127	77.9	55.2	102.4





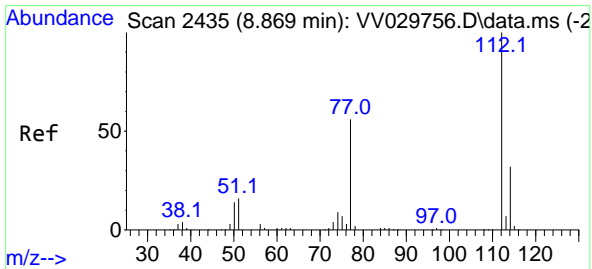
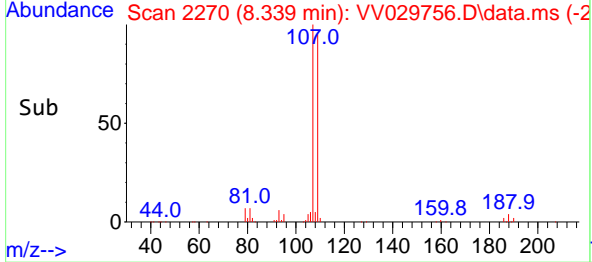
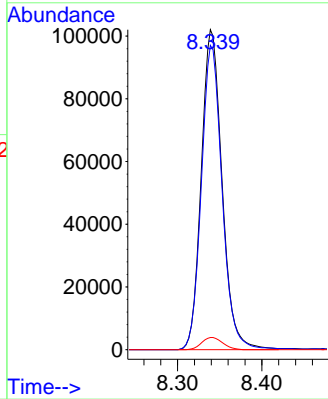
#50  
 1,2-Dibromoethane  
 Concen: 52.748 ug/L  
 RT: 8.339 min Scan# 21  
 Delta R.T. -0.003 min  
 Lab File: VV029756.D  
 Acq: 22 Dec 2022 10:49

Instrument : MSVOA\_V  
 ClientSampleId : VSTD050395

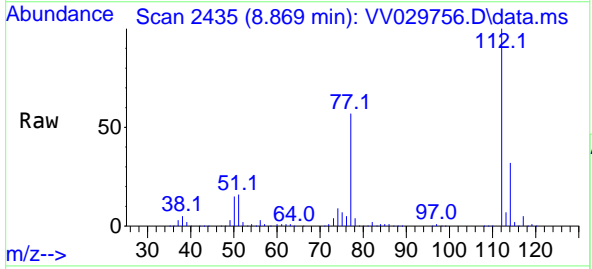


Tgt Ion:107 Resp: 175380

Ion	Ratio	Lower	Upper
107	100		
109	95.1	66.0	122.6
188	3.8	3.2	4.8

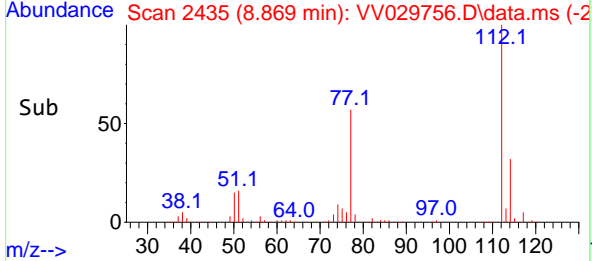
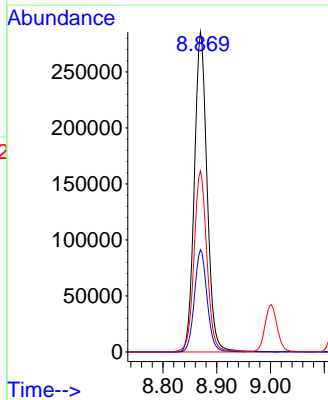


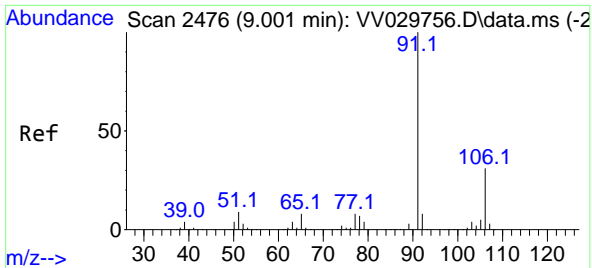
#51  
 Chlorobenzene  
 Concen: 53.210 ug/L  
 RT: 8.869 min Scan# 2435  
 Delta R.T. -0.000 min  
 Lab File: VV029756.D  
 Acq: 22 Dec 2022 10:49



Tgt Ion:112 Resp: 469371

Ion	Ratio	Lower	Upper
112	100		
114	32.0	22.3	41.3
77	56.6	45.0	67.4

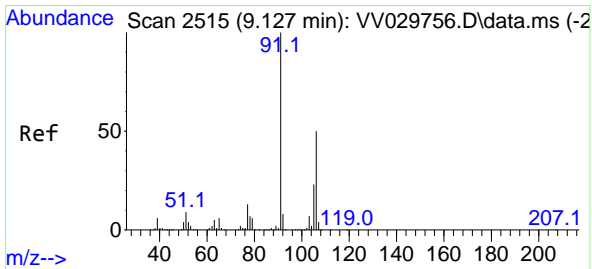
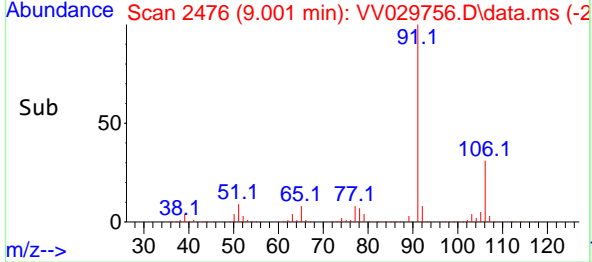
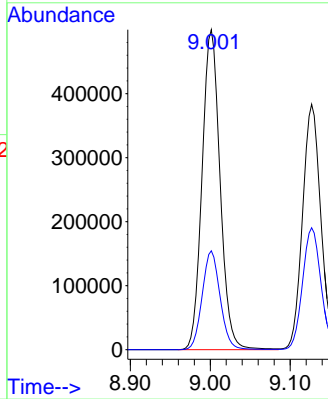
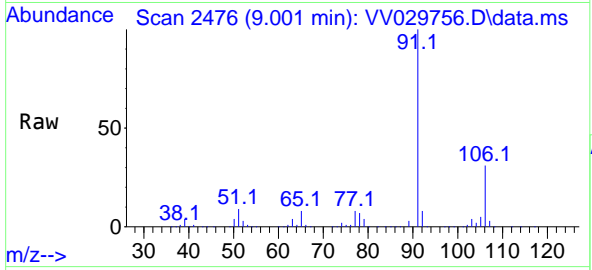




#52  
 Ethylbenzene  
 Concen: 53.556 ug/L  
 RT: 9.001 min Scan# 2476  
 Delta R.T. -0.000 min  
 Lab File: VV029756.D  
 Acq: 22 Dec 2022 10:49

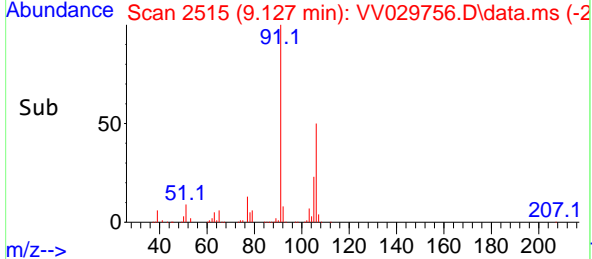
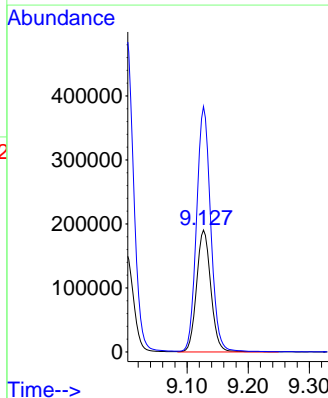
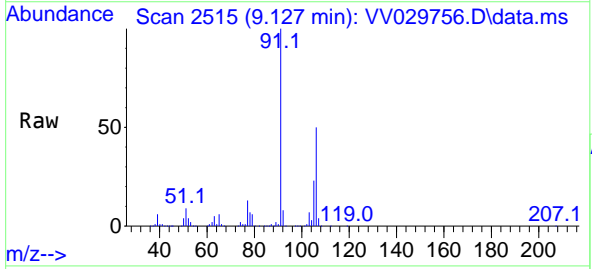
Instrument : MSVOA\_V  
 ClientSampleId : VSTD050395

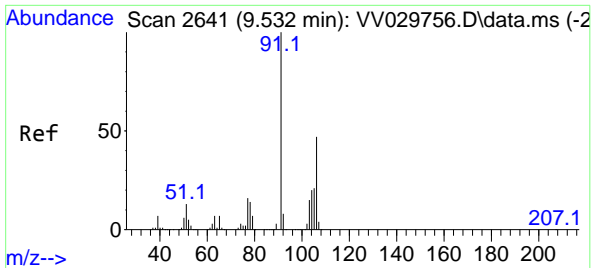
Tgt Ion: 91 Resp: 784372  
 Ion Ratio Lower Upper  
 91 100  
 106 30.9 21.8 40.6



#53  
 m,p-Xylene  
 Concen: 53.214 ug/L  
 RT: 9.127 min Scan# 2515  
 Delta R.T. -0.000 min  
 Lab File: VV029756.D  
 Acq: 22 Dec 2022 10:49

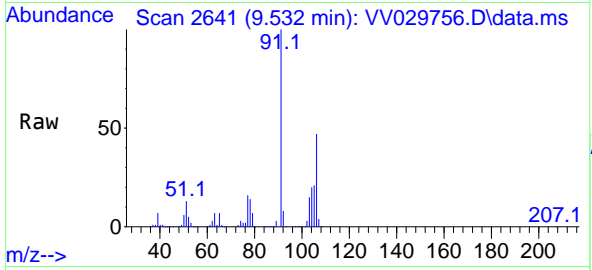
Tgt Ion: 106 Resp: 308464  
 Ion Ratio Lower Upper  
 106 100  
 91 201.3 139.5 259.1



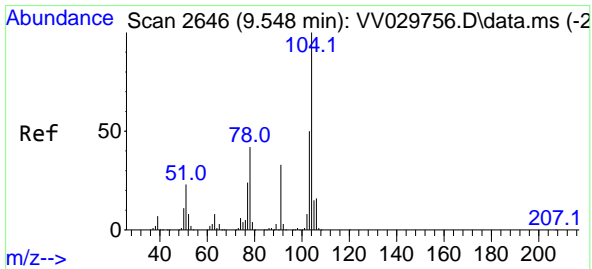
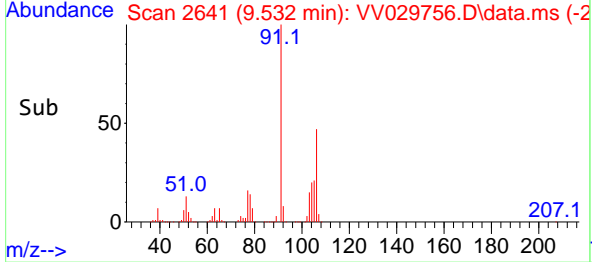
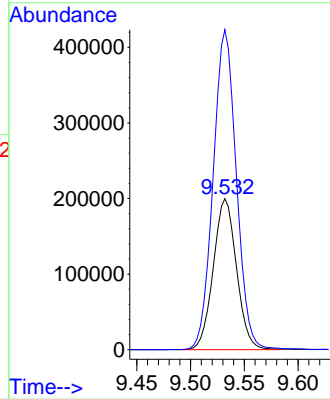


#54  
 o-Xylene  
 Concen: 52.322 ug/L  
 RT: 9.532 min Scan# 2641  
 Delta R.T. -0.000 min  
 Lab File: VV029756.D  
 Acq: 22 Dec 2022 10:49

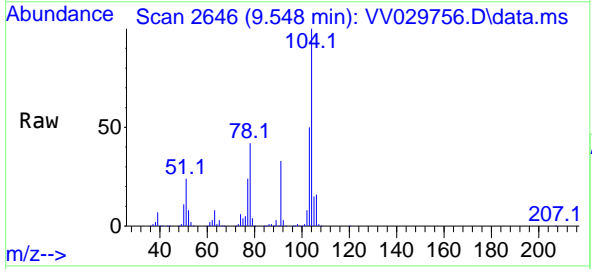
Instrument : MSVOA\_V  
 ClientSampleId : VSTD050395



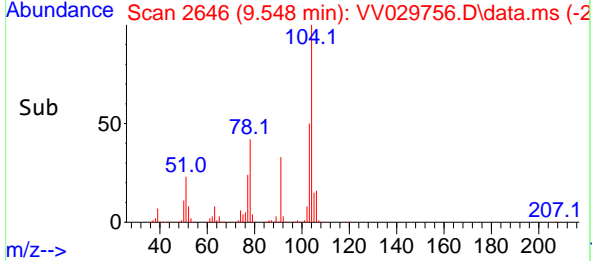
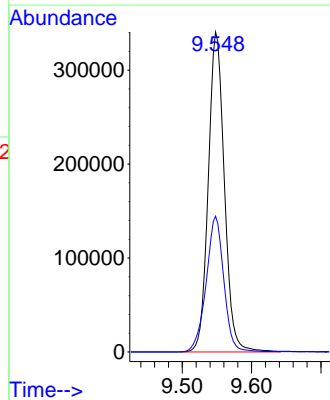
Tgt Ion:106 Resp: 300003  
 Ion Ratio Lower Upper  
 106 100  
 91 211.8 148.0 274.8



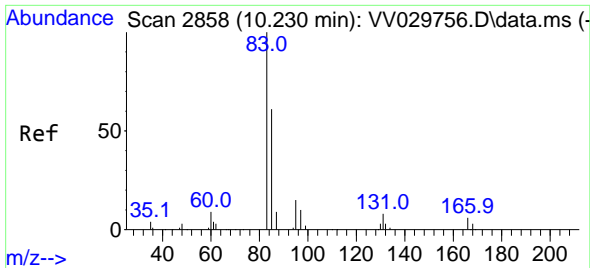
#55  
 Styrene  
 Concen: 55.039 ug/L  
 RT: 9.548 min Scan# 2646  
 Delta R.T. -0.003 min  
 Lab File: VV029756.D  
 Acq: 22 Dec 2022 10:49



Tgt Ion:104 Resp: 548430  
 Ion Ratio Lower Upper  
 104 100  
 78 42.5 29.4 54.6

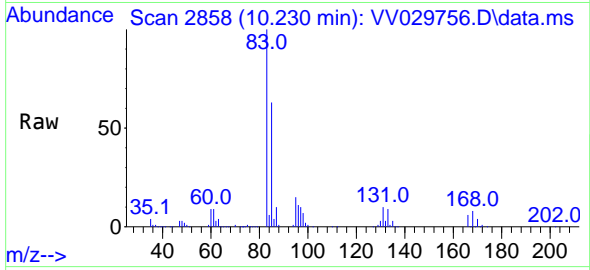






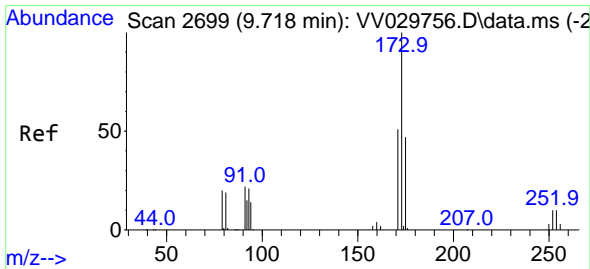
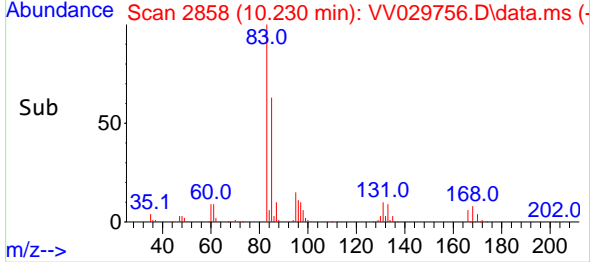
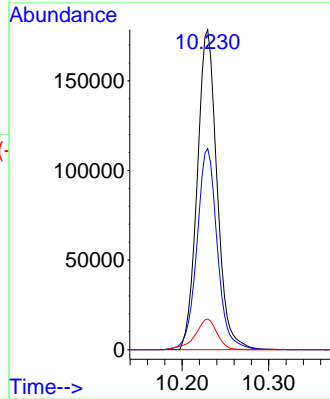
#57  
 1,1,2,2-Tetrachloroethane  
 Concen: 54.869 ug/L  
 RT: 10.230 min Scan# 2858  
 Delta R.T. -0.000 min  
 Lab File: VV029756.D  
 Acq: 22 Dec 2022 10:49

Instrument : MSVOA\_V  
 ClientSampleId : VSTD050395

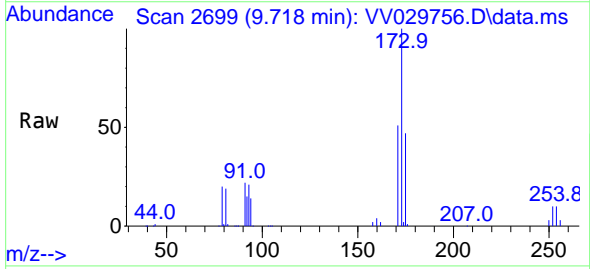


Tgt Ion: 83 Resp: 283257

Ion	Ratio	Lower	Upper
83	100		
85	62.8	45.7	84.9
131	9.6	7.9	11.9

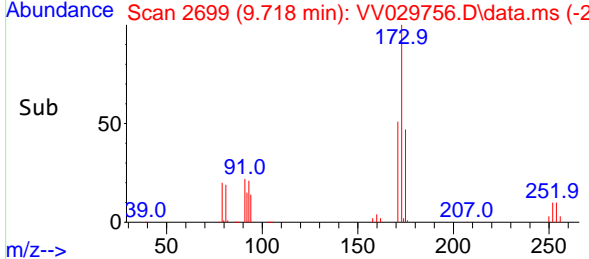
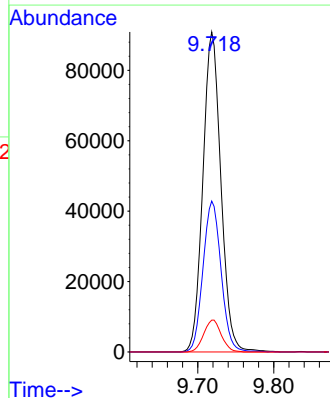


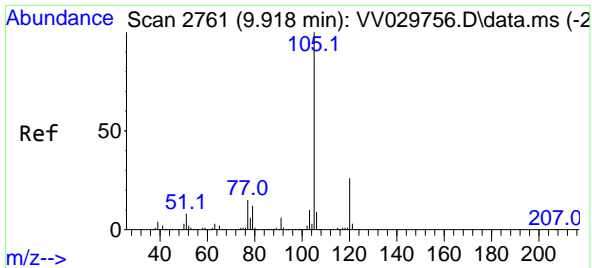
#59  
 Bromoform  
 Concen: 53.434 ug/L  
 RT: 9.718 min Scan# 2699  
 Delta R.T. -0.000 min  
 Lab File: VV029756.D  
 Acq: 22 Dec 2022 10:49



Tgt Ion: 173 Resp: 149734

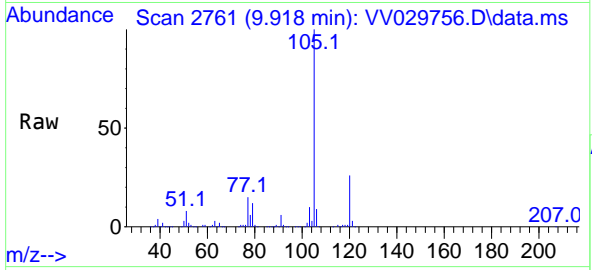
Ion	Ratio	Lower	Upper
173	100		
175	47.2	38.4	57.6
254	9.8	7.8	11.8





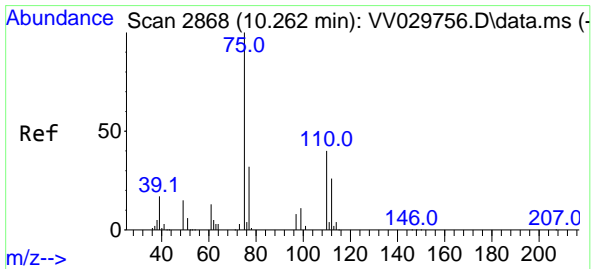
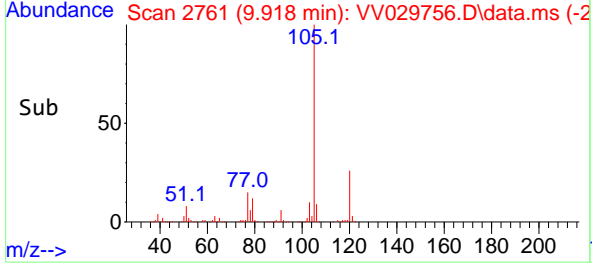
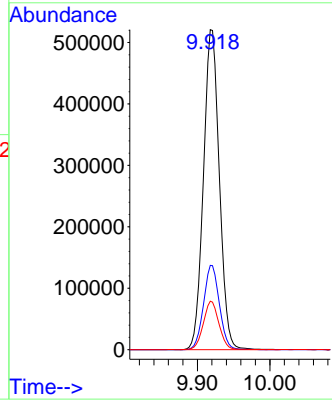
#60  
 Isopropylbenzene  
 Concen: 53.232 ug/L  
 RT: 9.918 min Scan# 21  
 Delta R.T. -0.003 min  
 Lab File: VV029756.D  
 Acq: 22 Dec 2022 10:49

Instrument : MSVOA\_V  
 ClientSampleId : VSTD050395



Tgt Ion: 105 Resp: 792799

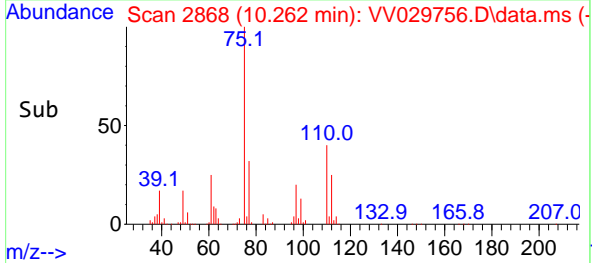
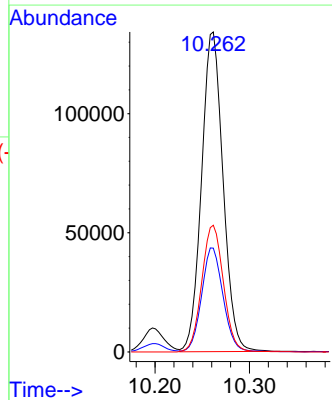
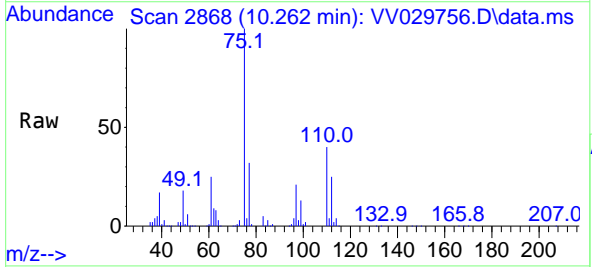
Ion	Ratio	Lower	Upper
105	100		
120	26.3	21.1	31.7
77	14.9	11.6	17.4

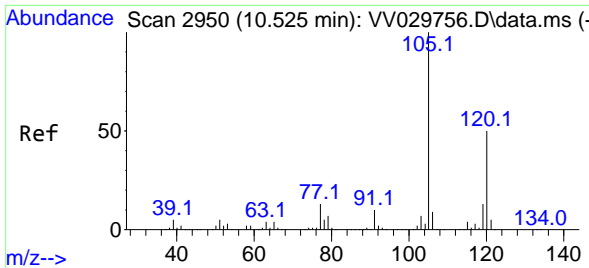


#61  
 1,2,3-Trichloropropane  
 Concen: 54.116 ug/L  
 RT: 10.262 min Scan# 2868  
 Delta R.T. -0.000 min  
 Lab File: VV029756.D  
 Acq: 22 Dec 2022 10:49

Tgt Ion: 75 Resp: 211895

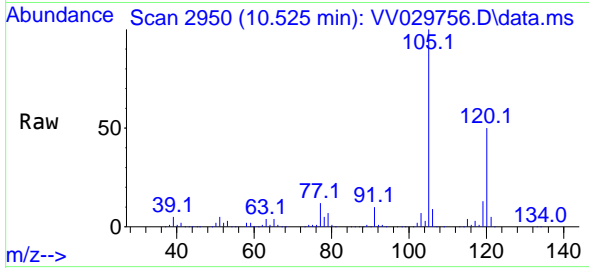
Ion	Ratio	Lower	Upper
75	100		
77	32.5	25.4	38.2
110	40.0	32.7	49.1



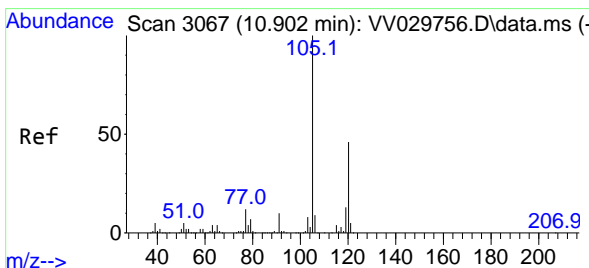
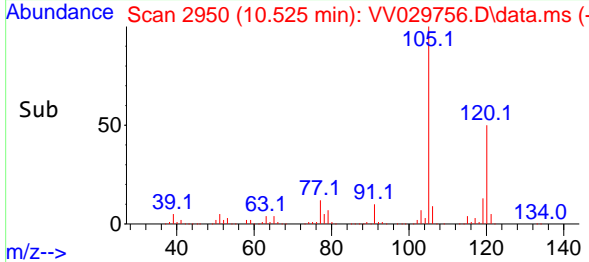
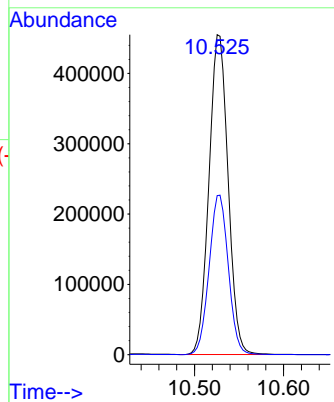


#62  
 1,3,5-Trimethylbenzene  
 Concen: 51.460 ug/L  
 RT: 10.525 min Scan# 2950  
 Delta R.T. -0.003 min  
 Lab File: VV029756.D  
 Acq: 22 Dec 2022 10:49

Instrument : MSVOA\_V  
 ClientSampleId : VSTD050395

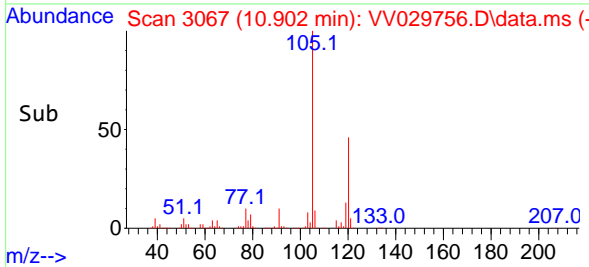
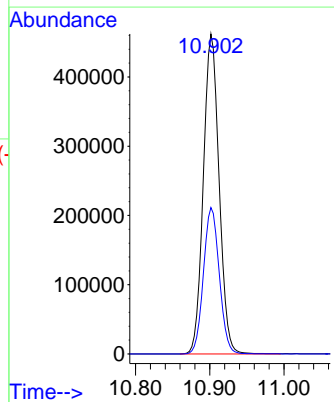
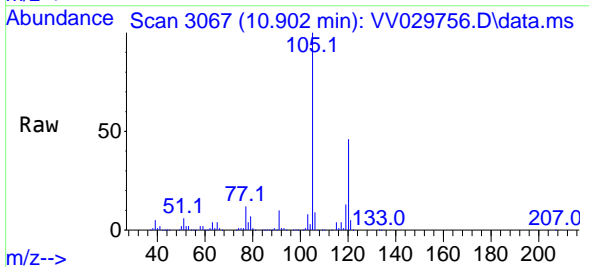


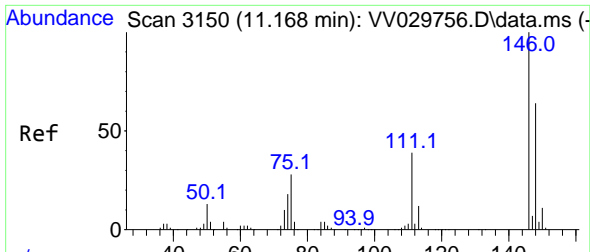
Tgt Ion:105 Resp: 677650  
 Ion Ratio Lower Upper  
 105 100  
 120 50.1 40.0 60.0



#63  
 1,2,4-Trimethylbenzene  
 Concen: 52.103 ug/L  
 RT: 10.902 min Scan# 3067  
 Delta R.T. -0.000 min  
 Lab File: VV029756.D  
 Acq: 22 Dec 2022 10:49

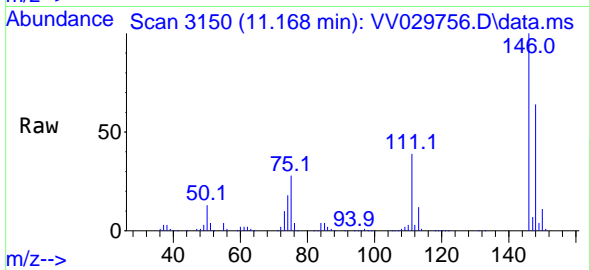
Tgt Ion:105 Resp: 680117  
 Ion Ratio Lower Upper  
 105 100  
 120 46.0 36.7 55.1



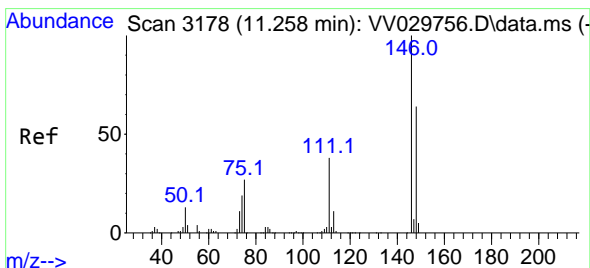
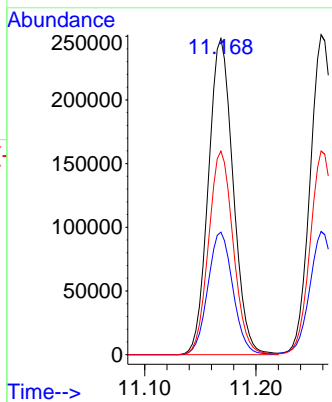
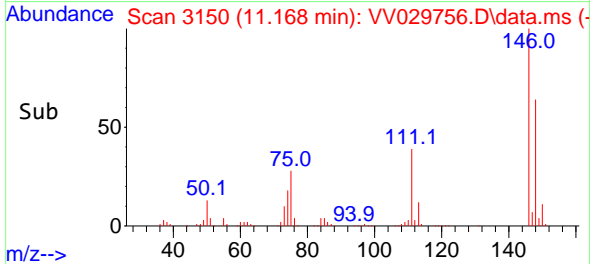


#64  
 1,3-Dichlorobenzene  
 Concen: 52.664 ug/L  
 RT: 11.168 min Scan# 3150  
 Delta R.T. -0.000 min  
 Lab File: VV029756.D  
 Acq: 22 Dec 2022 10:49

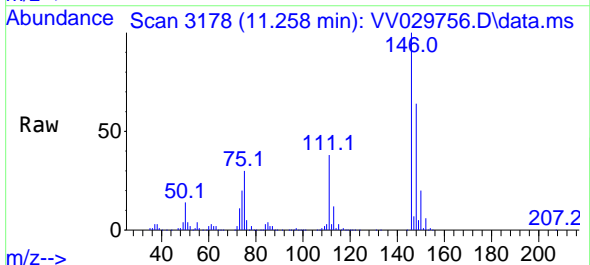
Instrument : MSVOA\_V  
 ClientSampleId : VSTD050395



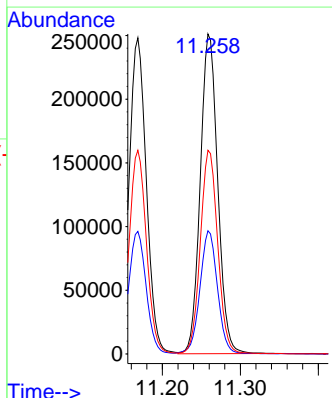
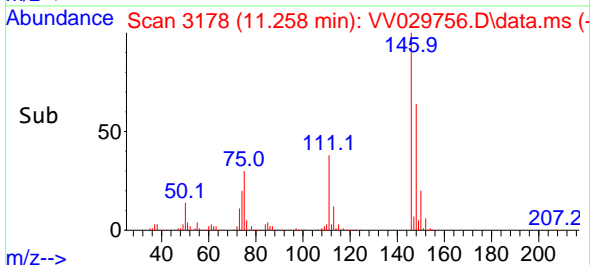
Tgt Ion:146 Resp: 383507  
 Ion Ratio Lower Upper  
 146 100  
 111 38.8 27.4 51.0  
 148 64.5 44.6 82.8

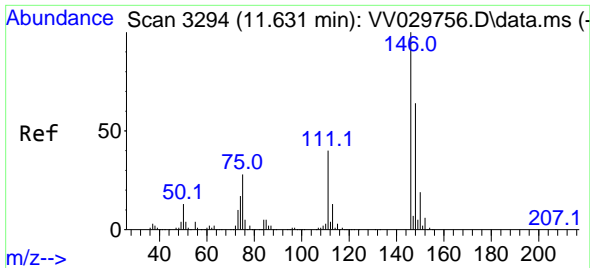


#65  
 1,4-Dichlorobenzene  
 Concen: 52.682 ug/L  
 RT: 11.258 min Scan# 3178  
 Delta R.T. -0.000 min  
 Lab File: VV029756.D  
 Acq: 22 Dec 2022 10:49



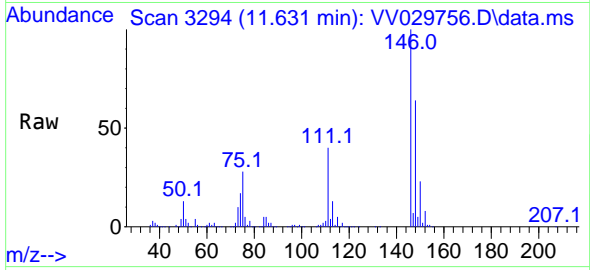
Tgt Ion:146 Resp: 389889  
 Ion Ratio Lower Upper  
 146 100  
 111 38.5 26.2 48.8  
 148 63.6 44.7 83.1



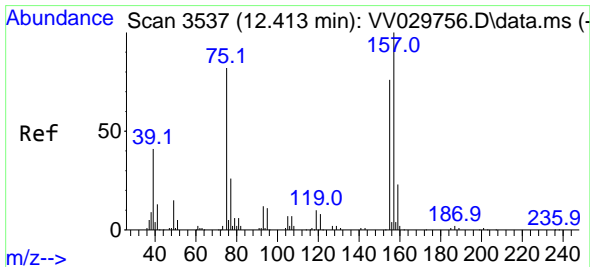
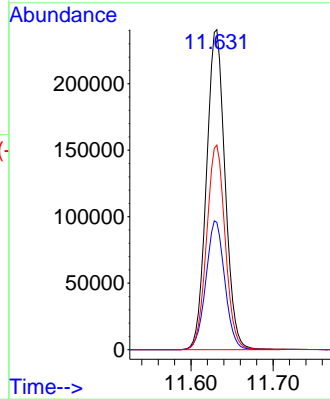
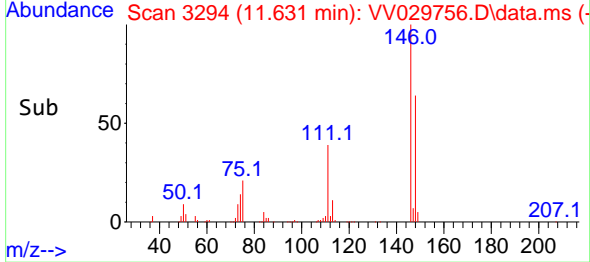


#67  
 1,2-Dichlorobenzene  
 Concen: 50.826 ug/L  
 RT: 11.631 min Scan# 31  
 Delta R.T. -0.000 min  
 Lab File: VV029756.D  
 Acq: 22 Dec 2022 10:49

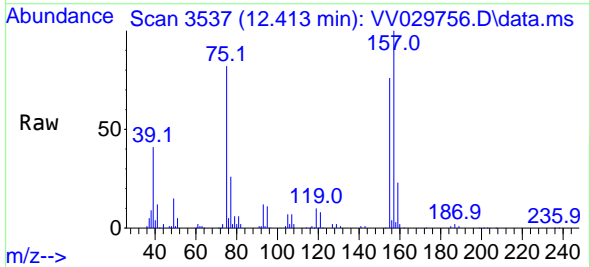
Instrument :  
 MSVOA\_V  
 ClientSampleId :  
 VSTD050395



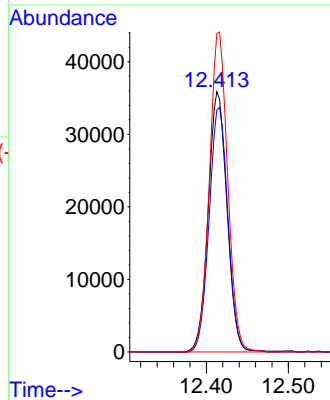
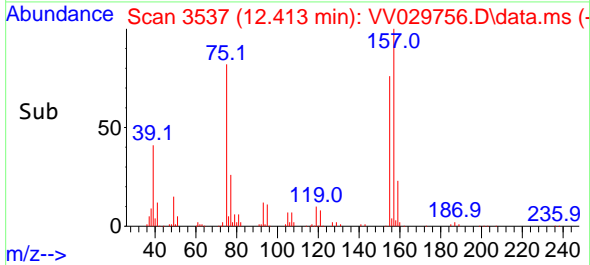
Tgt Ion:146 Resp: 378480  
 Ion Ratio Lower Upper  
 146 100  
 111 39.8 32.0 48.0  
 148 63.9 50.6 76.0

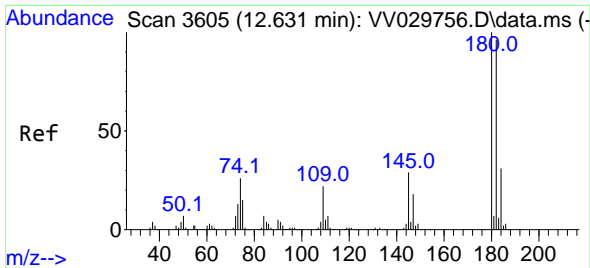


#68  
 1,2-Dibromo-3-chloropropane  
 Concen: 46.922 ug/L  
 RT: 12.413 min Scan# 3537  
 Delta R.T. -0.000 min  
 Lab File: VV029756.D  
 Acq: 22 Dec 2022 10:49



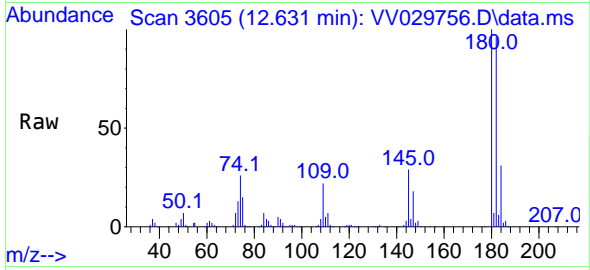
Tgt Ion: 75 Resp: 57103  
 Ion Ratio Lower Upper  
 75 100  
 155 93.0 76.2 114.2  
 157 122.4 96.0 144.0



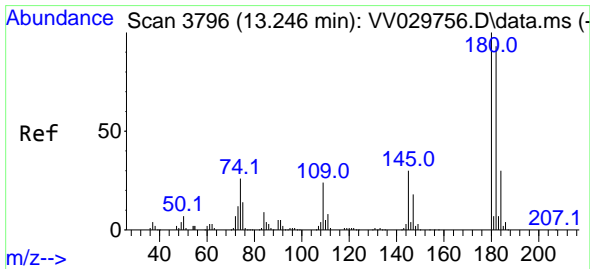
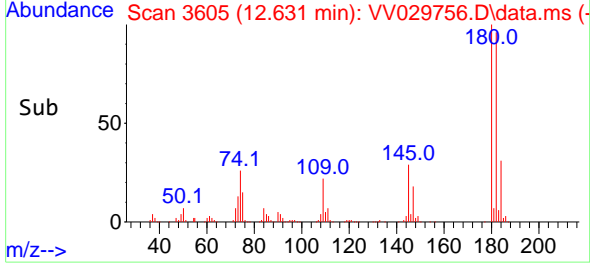
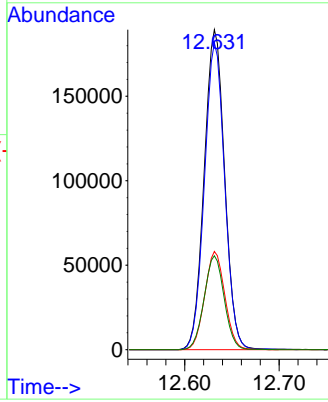


#69  
 1,3,5-Trichlorobenzene  
 Concen: 49.055 ug/L  
 RT: 12.631 min Scan# 3605  
 Delta R.T. -0.000 min  
 Lab File: VV029756.D  
 Acq: 22 Dec 2022 10:49

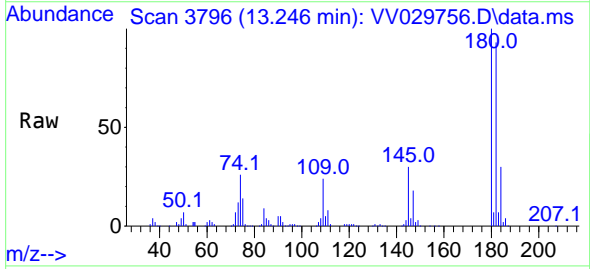
Instrument : MSVOA\_V  
 ClientSampleId : VSTD050395



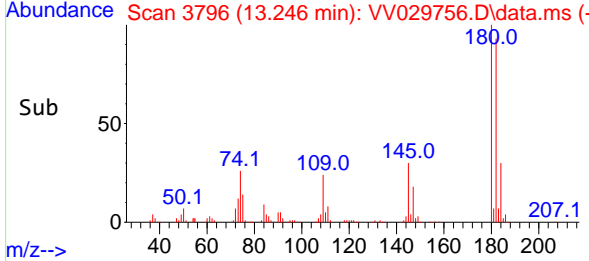
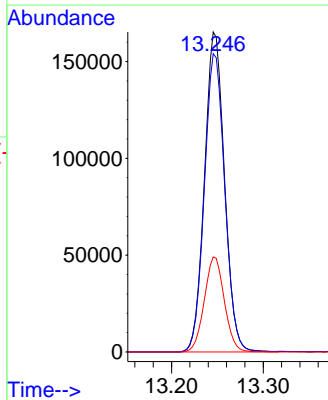
Tgt Ion:180 Resp: 284281  
 Ion Ratio Lower Upper  
 180 100  
 182 95.0 76.5 114.7  
 184 30.4 24.6 36.8  
 145 28.8 23.0 34.6

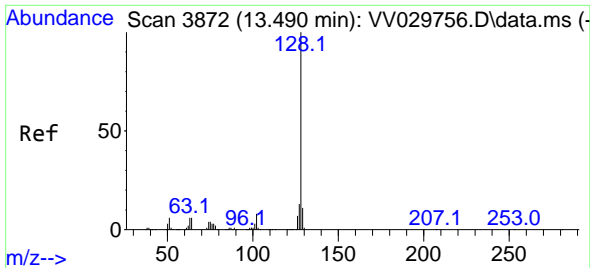


#70  
 1,2,4-trichlorobenzene  
 Concen: 48.687 ug/L  
 RT: 13.246 min Scan# 3796  
 Delta R.T. -0.003 min  
 Lab File: VV029756.D  
 Acq: 22 Dec 2022 10:49



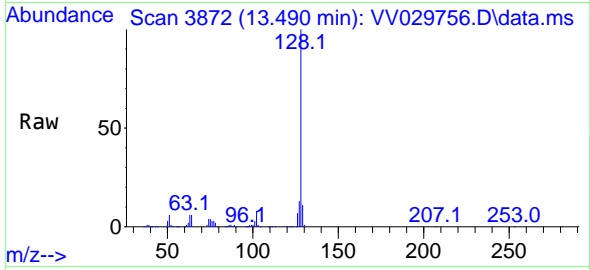
Tgt Ion:180 Resp: 250899  
 Ion Ratio Lower Upper  
 180 100  
 182 94.9 76.3 114.5  
 145 29.6 23.7 35.5





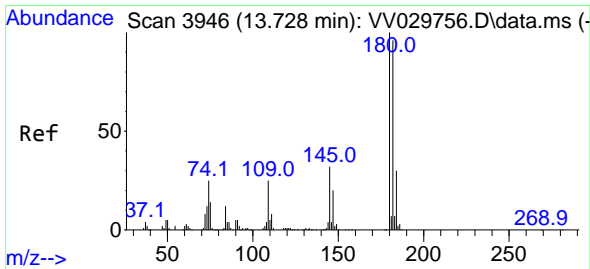
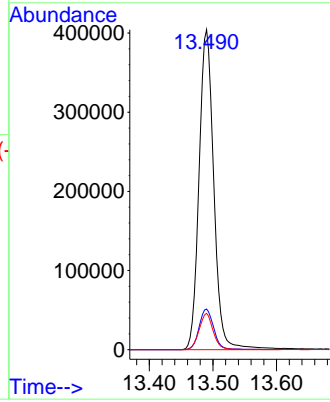
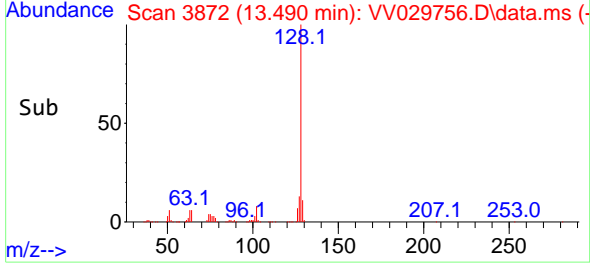
#71  
 Naphthalene  
 Concen: 55.702 ug/L  
 RT: 13.490 min Scan# 3872  
 Delta R.T. -0.000 min  
 Lab File: VV029756.D  
 Acq: 22 Dec 2022 10:49

Instrument : MSVOA\_V  
 ClientSampleId : VSTD050395

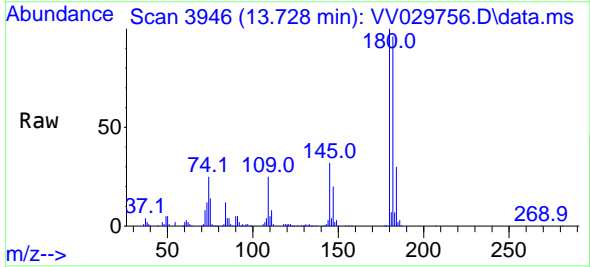


Tgt Ion:128 Resp: 651109

Ion	Ratio	Lower	Upper
128	100		
127	12.6	10.2	15.4
129	10.8	8.5	12.7



#72  
 1,2,3-Trichlorobenzene  
 Concen: 50.702 ug/L  
 RT: 13.728 min Scan# 3946  
 Delta R.T. -0.000 min  
 Lab File: VV029756.D  
 Acq: 22 Dec 2022 10:49



Tgt Ion:180 Resp: 255921

Ion	Ratio	Lower	Upper
180	100		
182	95.4	76.4	114.6
145	31.3	25.0	37.6

