

Data Path : Z:\voasrv\HPCHEM1\MSVOA_V\Data\VW122222\
 Data File : VV029766.D
 Acq On : 22 Dec 2022 18:14
 Operator : SY/MD
 Sample : N6193-16
 Misc : 5.0mL/MSVOA_V/WATER
 ALS Vial : 14 Sample Multiplier: 1

Instrument :
 MSVOA_V
 ClientSampleId :
 BGSP3

Quant Time: Dec 23 02:10:03 2022
 Quant Method : Z:\voasrv\HPCHEM1\MSVOA_V\Method\SFAMVLM120722WMA.M
 Quant Title : VOC Analysis
 QLast Update : Wed Dec 21 00:15:13 2022
 Response via : Initial Calibration

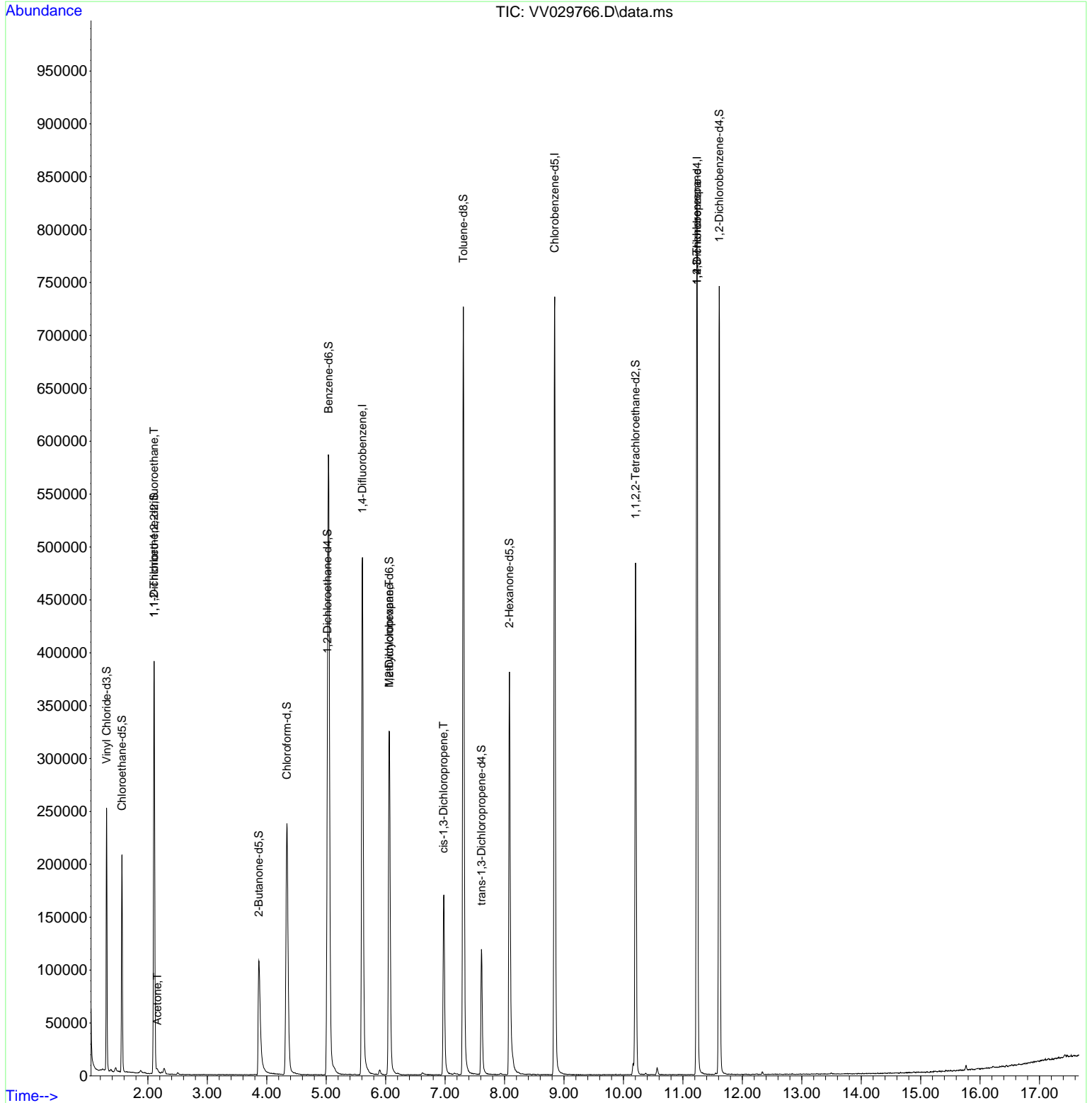
Compound	R.T.	QIon	Response	Conc	Units	Dev(Min)
Internal Standards						
1) 1,4-Difluorobenzene	5.609	114	450608	50.000	ug/L	0.00
28) Chlorobenzene-d5	8.844	117	436477	50.000	ug/L	0.00
58) 1,4-Dichlorobenzene-d4	11.239	152	231016	50.000	ug/L	0.00
System Monitoring Compounds						
4) Vinyl Chloride-d3	1.304	65	158495	57.440	ug/L	0.00
Spiked Amount	50.000	Range 60 - 135	Recovery =	114.880%		
7) Chloroethane-d5	1.565	69	131822	62.651	ug/L	0.00
Spiked Amount	50.000	Range 70 - 130	Recovery =	125.300%		
11) 1,1-Dichloroethene-d2	2.105	63	199660	46.391	ug/L	0.00
Spiked Amount	50.000	Range 60 - 125	Recovery =	92.780%		
21) 2-Butanone-d5	3.867	46	172538	102.502	ug/L	0.00
Spiked Amount	100.000	Range 40 - 130	Recovery =	102.500%		
24) Chloroform-d	4.339	84	249772	48.102	ug/L	0.00
Spiked Amount	50.000	Range 70 - 125	Recovery =	96.200%		
26) 1,2-Dichloroethane-d4	5.021	65	155576	52.459	ug/L	0.00
Spiked Amount	50.000	Range 70 - 125	Recovery =	104.920%		
32) Benzene-d6	5.040	84	561937	48.723	ug/L	0.00
Spiked Amount	50.000	Range 70 - 125	Recovery =	97.440%		
36) 1,2-Dichloropropane-d6	6.059	67	176484	50.097	ug/L	0.00
Spiked Amount	50.000	Range 70 - 120	Recovery =	100.200%		
41) Toluene-d8	7.307	98	502063	46.201	ug/L	0.00
Spiked Amount	50.000	Range 80 - 120	Recovery =	92.400%		
43) trans-1,3-Dichloroprop...	7.612	79	74143	41.679	ug/L	0.00
Spiked Amount	50.000	Range 60 - 125	Recovery =	83.360%		
47) 2-Hexanone-d5	8.082	63	145337	96.612	ug/L	0.00
Spiked Amount	100.000	Range 45 - 130	Recovery =	96.610%		
56) 1,1,2,2-Tetrachloroeth...	10.204	84	241920	48.056	ug/L	0.00
Spiked Amount	50.000	Range 65 - 120	Recovery =	96.120%		
66) 1,2-Dichlorobenzene-d4	11.612	152	199515	45.368	ug/L	0.00
Spiked Amount	50.000	Range 80 - 120	Recovery =	90.740%		
Target Compounds						
10) 1,1,2-Trichloro-1,2,2-...	2.105	101	2036	0.864	ug/L #	18
13) Acetone	2.159	43	2814	2.566	ug/L	65
35) Methylcyclohexane	6.059	83	42306	8.080	ug/L #	21
39) cis-1,3-Dichloropropene	6.976	75	4271	0.875	ug/L #	60
61) 1,2,3-Trichloropropane	11.236	75	25806	7.237	ug/L #	64

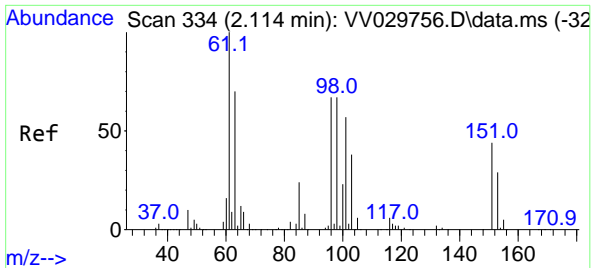
(#) = qualifier out of range (m) = manual integration (+) = signals summed

Data Path : Z:\voasrv\HPCHEM1\MSVOA_V\Data\VV122222\
 Data File : VV029766.D
 Acq On : 22 Dec 2022 18:14
 Operator : SY/MD
 Sample : N6193-16
 Misc : 5.0mL/MSVOA_V/WATER
 ALS Vial : 14 Sample Multiplier: 1

Instrument :
 MSVOA_V
 ClientSampleId :
 BGSP3

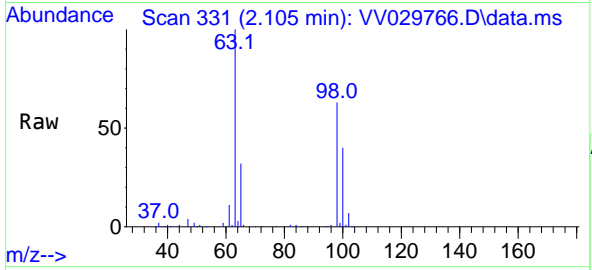
Quant Time: Dec 23 02:10:03 2022
 Quant Method : Z:\voasrv\HPCHEM1\MSVOA_V\Method\SFAMVLM120722WMA.M
 Quant Title : VOC Analysis
 QLast Update : Wed Dec 21 00:15:13 2022
 Response via : Initial Calibration



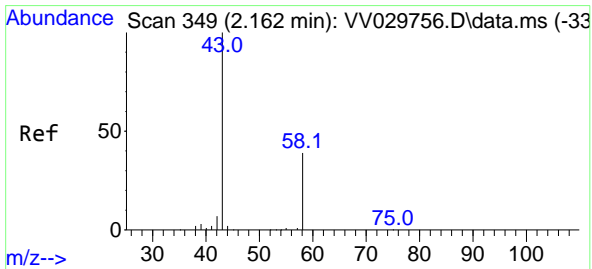
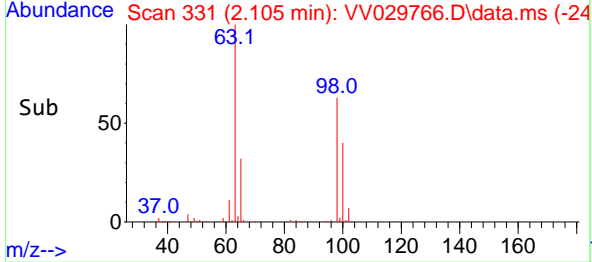
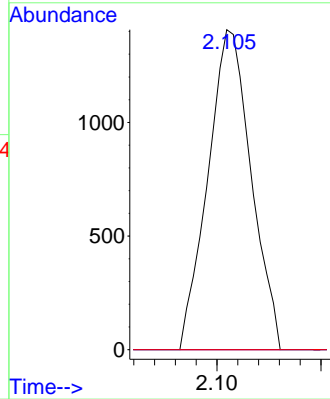


#10
 1,1,2-Trichloro-1,2,2-trifluoroethane
 Concen: 0.864 ug/L
 RT: 2.105 min Scan# 31
 Delta R.T. -0.010 min
 Lab File: VV029766.D
 Acq: 22 Dec 2022 18:14

Instrument : MSVOA_V
 ClientSampleId : BGSP3

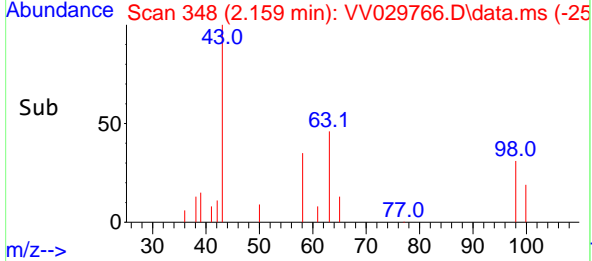
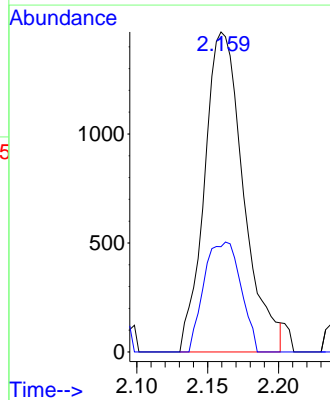
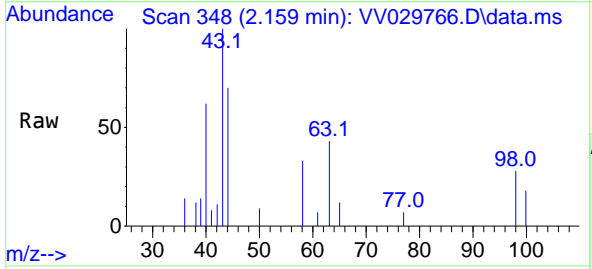


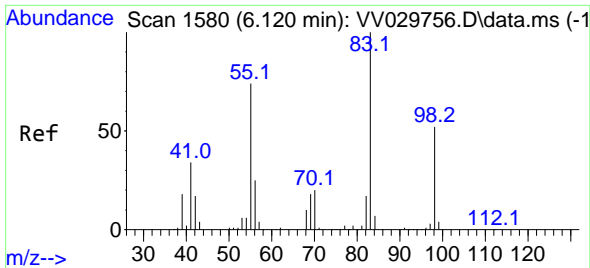
Tgt Ion:101 Resp: 2036
 Ion Ratio Lower Upper
 101 100
 85 0.0 33.6 50.4#
 151 0.0 63.5 95.3#



#13
 Acetone
 Concen: 2.566 ug/L
 RT: 2.159 min Scan# 348
 Delta R.T. -0.003 min
 Lab File: VV029766.D
 Acq: 22 Dec 2022 18:14

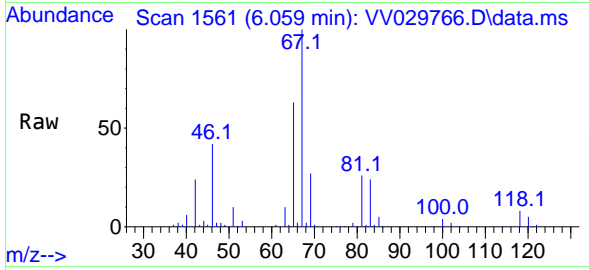
Tgt Ion: 43 Resp: 2814
 Ion Ratio Lower Upper
 43 100
 58 16.6 0.0 74.8



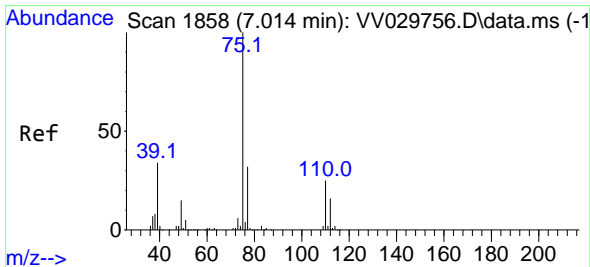
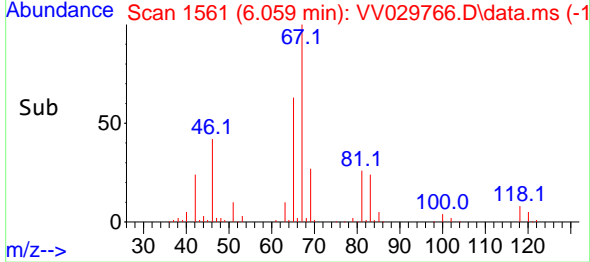
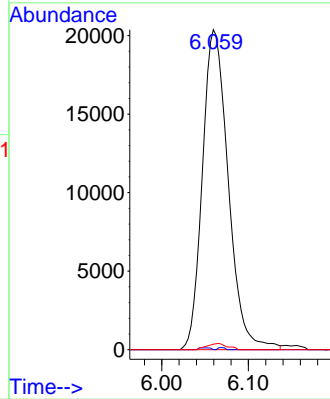


#35
 Methylcyclohexane
 Concen: 8.080 ug/L
 RT: 6.059 min Scan# 11
 Delta R.T. -0.064 min
 Lab File: VV029766.D
 Acq: 22 Dec 2022 18:14

Instrument : MSVOA_V
 ClientSampleId : BGSP3

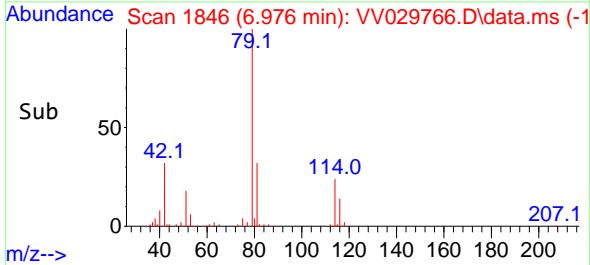
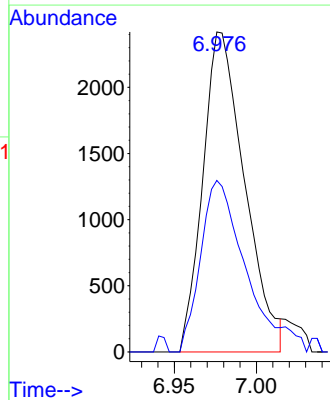
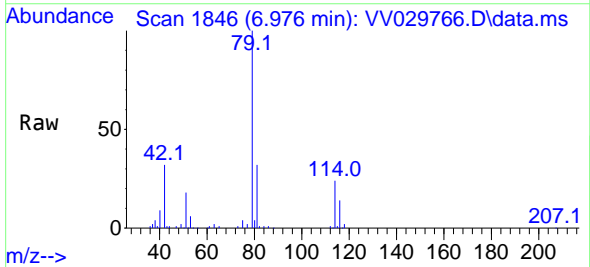


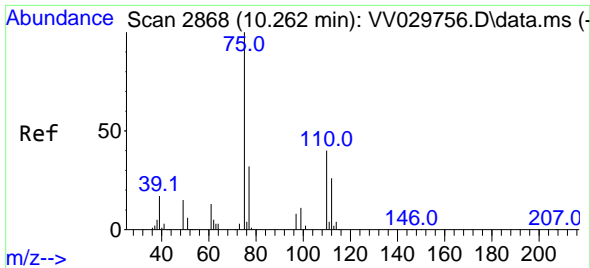
Tgt Ion: 83 Resp: 42306
 Ion Ratio Lower Upper
 83 100
 55 0.2 55.5 83.3#
 98 1.4 39.8 59.8#



#39
 cis-1,3-Dichloropropene
 Concen: 0.875 ug/L
 RT: 6.976 min Scan# 1846
 Delta R.T. -0.042 min
 Lab File: VV029766.D
 Acq: 22 Dec 2022 18:14

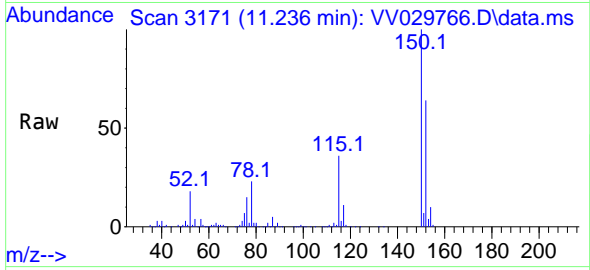
Tgt Ion: 75 Resp: 4271
 Ion Ratio Lower Upper
 75 100
 77 53.6 21.9 40.7#





#61
 1,2,3-Trichloropropane
 Concen: 7.237 ug/L
 RT: 11.236 min Scan# 31
 Delta R.T. 0.974 min
 Lab File: VV029766.D
 Acq: 22 Dec 2022 18:14

Instrument :
 MSVOA_V
 ClientSampleId :
 BGSP3



Tgt Ion: 75 Resp: 25806

Ion	Ratio	Lower	Upper
75	100		
77	30.6	25.4	38.2
110	2.3	32.7	49.1#

