

Data Path : Z:\voasrv\HPCHEM1\MSVOA_V\Data\VW122821\
 Data File : VV024218.D
 Acq On : 28 Dec 2021 15:12
 Operator : SY/MD
 Sample : M5201-12RE
 Misc : 25.0mL/MSVOA_V/WATER
 ALS Vial : 15 Sample Multiplier: 1

Instrument :
 MSVOA_V
 ClientSampleId :

Quant Time: Dec 29 05:05:54 2021
 Quant Method : Z:\voasrv\HPCHEM1\MSVOA_V\Method\SFAMVTR122721WMA.M
 Quant Title : TRACE VOA SFAM1.0
 QLast Update : Wed Dec 29 04:43:10 2021
 Response via : Initial Calibration

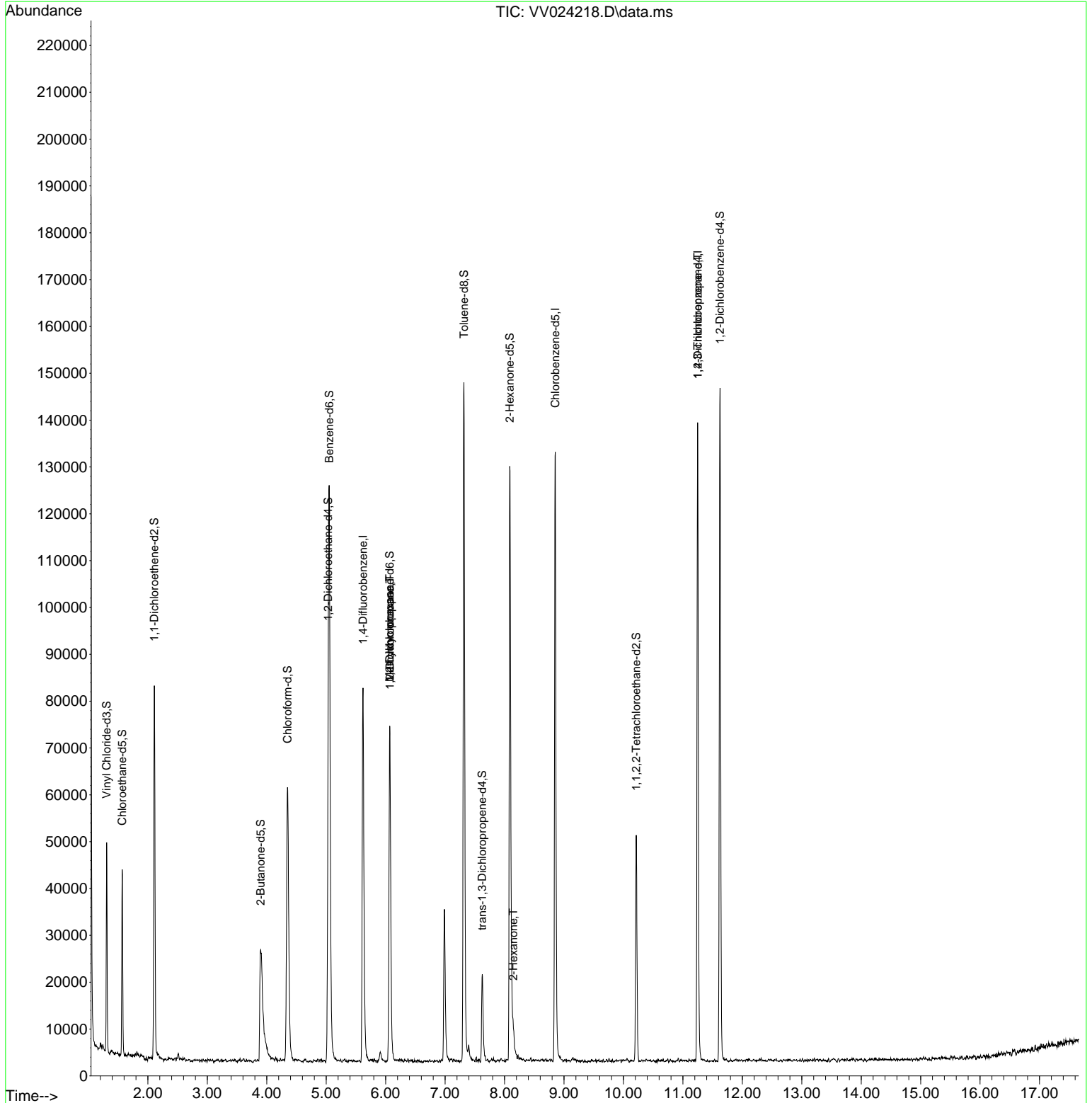
Compound	R.T.	QIon	Response	Conc	Units	Dev(Min)
Internal Standards						
1) 1,4-Difluorobenzene	5.619	114	72561	5.000	ug/L	0.00
28) Chlorobenzene-d5	8.854	117	75149	5.000	ug/L	0.00
58) 1,4-Dichlorobenzene-d4	11.249	152	37821	5.000	ug/L	0.00
System Monitoring Compounds						
4) Vinyl Chloride-d3	1.307	65	25895	4.745	ug/L	0.00
Spiked Amount	5.000	Range 40 - 130	Recovery	=	94.800%	
7) Chloroethane-d5	1.568	69	23801	5.229	ug/L	0.00
Spiked Amount	5.000	Range 65 - 130	Recovery	=	104.600%	
11) 1,1-Dichloroethene-d2	2.108	63	40965	3.088	ug/L	0.00
Spiked Amount	5.000	Range 60 - 125	Recovery	=	61.800%	
20) 2-Butanone-d5	3.899	46	53641	88.480	ug/L	-0.02
Spiked Amount	50.000	Range 40 - 130	Recovery	=	176.960%#	
24) Chloroform-d	4.349	84	60567	5.228	ug/L	0.00
Spiked Amount	5.000	Range 70 - 125	Recovery	=	104.600%	
26) 1,2-Dichloroethane-d4	5.034	65	30849	5.948	ug/L	0.00
Spiked Amount	5.000	Range 70 - 130	Recovery	=	119.000%	
32) Benzene-d6	5.053	84	110263	5.433	ug/L	0.00
Spiked Amount	5.000	Range 70 - 125	Recovery	=	108.600%	
36) 1,2-Dichloropropane-d6	6.069	67	31006	5.578	ug/L	0.00
Spiked Amount	5.000	Range 60 - 140	Recovery	=	111.600%	
41) Toluene-d8	7.317	98	97850	4.892	ug/L	0.00
Spiked Amount	5.000	Range 70 - 130	Recovery	=	97.800%	
43) trans-1,3-Dichloroprop...	7.625	79	11586	4.922	ug/L	0.00
Spiked Amount	5.000	Range 55 - 130	Recovery	=	98.400%	
46) 2-Hexanone-d5	8.088	63	42134	53.236	ug/L	0.00
Spiked Amount	50.000	Range 45 - 130	Recovery	=	106.480%	
56) 1,1,2,2-Tetrachloroeth...	10.217	84	21952	5.784	ug/L	0.00
Spiked Amount	5.000	Range 65 - 120	Recovery	=	115.600%	
66) 1,2-Dichlorobenzene-d4	11.625	152	39152	5.955	ug/L	0.00
Spiked Amount	5.000	Range 80 - 120	Recovery	=	119.200%	
Target Compounds						
35) Methylcyclohexane	6.069	83	8249	0.512	ug/L #	19
37) 1,2-Dichloropropane	6.072	63	4116	0.453	ug/L #	84
48) 2-Hexanone	8.146	43	3379	1.063	ug/L #	74
61) 1,2,3-Trichloropropane	11.249	75	3764	0.841	ug/L #	62

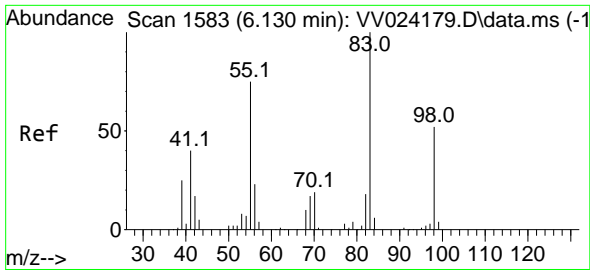
(#) = qualifier out of range (m) = manual integration (+) = signals summed

Data Path : Z:\voasrv\HPCHEM1\MSVOA_V\Data\VV122821\
 Data File : VV024218.D
 Acq On : 28 Dec 2021 15:12
 Operator : SY/MD
 Sample : M5201-12RE
 Misc : 25.0mL/MSVOA_V/WATER
 ALS Vial : 15 Sample Multiplier: 1

Instrument :
 MSVOA_V
 ClientSampleId :

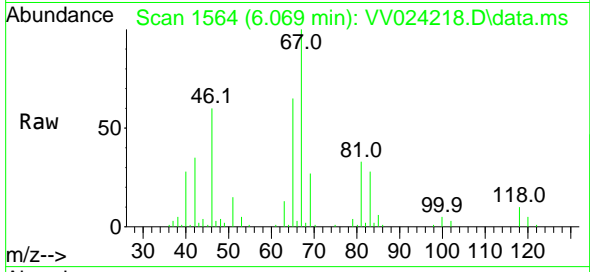
Quant Time: Dec 29 05:05:54 2021
 Quant Method : Z:\voasrv\HPCHEM1\MSVOA_V\Method\SFAMVTR122721WMA.M
 Quant Title : TRACE VOA SFAM1.0
 QLast Update : Wed Dec 29 04:43:10 2021
 Response via : Initial Calibration



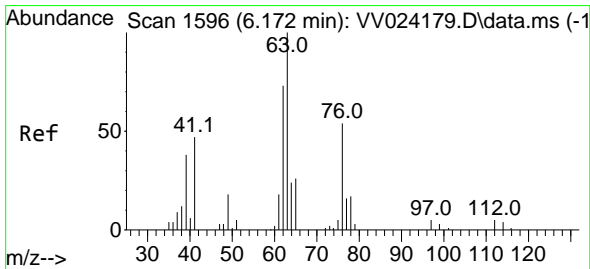
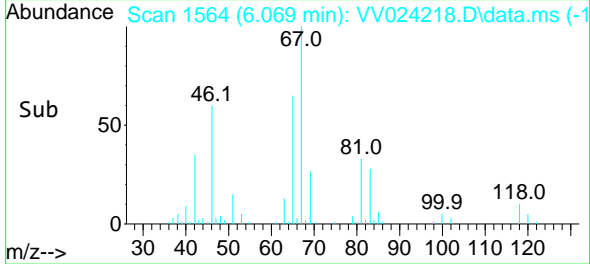
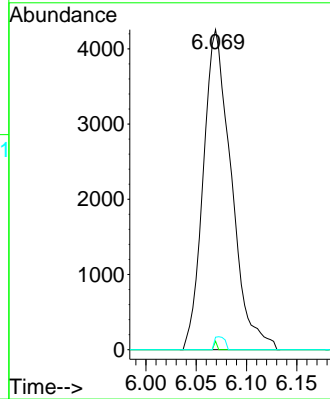


#35
 Methylcyclohexane
 Concen: 0.512 ug/L
 RT: 6.069 min Scan# 1564
 Delta R.T. -0.061 min
 Lab File: VV024218.D
 Acq: 28 Dec 2021 15:12

Instrument : MSVOA_V
 ClientSampleId :

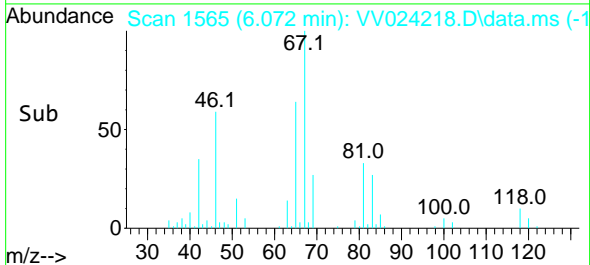
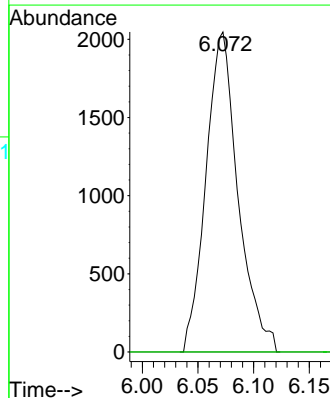
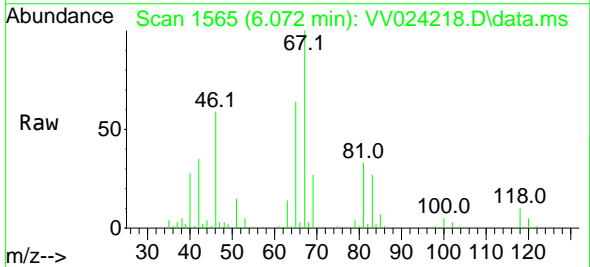


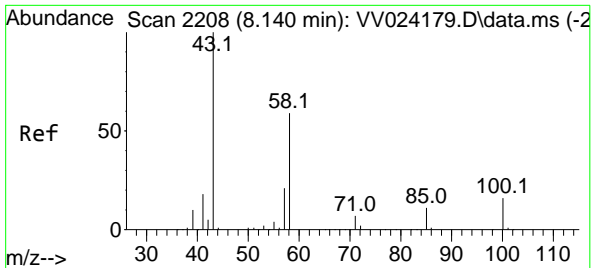
Tgt Ion: 83 Resp: 8249
 Ion Ratio Lower Upper
 83 100
 55 0.3 60.2 90.2#
 98 1.5 41.0 61.4#



#37
 1,2-Dichloropropane
 Concen: 0.453 ug/L
 RT: 6.072 min Scan# 1565
 Delta R.T. -0.100 min
 Lab File: VV024218.D
 Acq: 28 Dec 2021 15:12

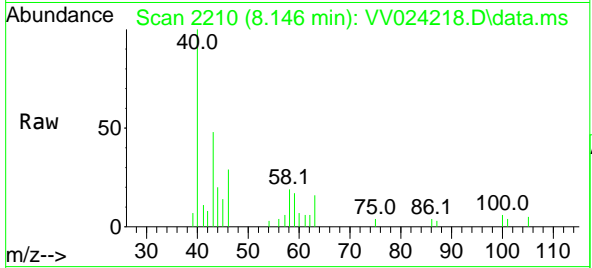
Tgt Ion: 63 Resp: 4116
 Ion Ratio Lower Upper
 63 100
 112 0.0 4.3 6.5#





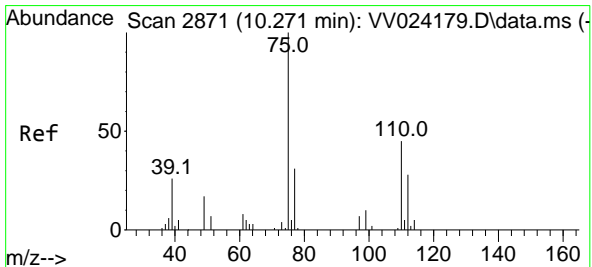
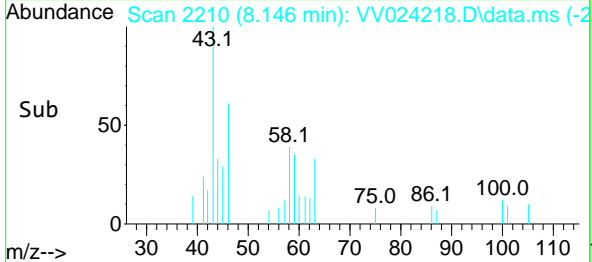
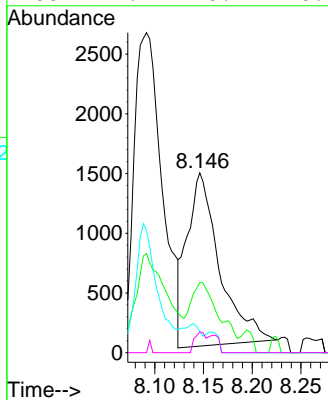
#48
 2-Hexanone
 Concen: 1.063 ug/L
 RT: 8.146 min Scan# 21
 Delta R.T. 0.003 min
 Lab File: VV024218.D
 Acq: 28 Dec 2021 15:12

Instrument :
 MSVOA_V
 ClientSampleId :



Tgt Ion: 43 Resp: 3379

Ion	Ratio	Lower	Upper
43	100		
58	36.3	44.5	66.7#
57	7.0	15.1	22.7#
100	4.1	10.7	16.1#



#61
 1,2,3-Trichloropropane
 Concen: 0.841 ug/L
 RT: 11.249 min Scan# 3175
 Delta R.T. 0.974 min
 Lab File: VV024218.D
 Acq: 28 Dec 2021 15:12

Tgt Ion: 75 Resp: 3764

Ion	Ratio	Lower	Upper
75	100		
77	32.3	26.4	39.6
110	0.0	34.2	51.2#

