

Data Path : Z:\voasrv\HPCHEM1\MSVOA\_V\Data\VW122821\  
 Data File : VV024214.D  
 Acq On : 28 Dec 2021 13:36  
 Operator : SY/MD  
 Sample : M5201-05  
 Misc : 25.0mL/MSVOA\_V/WATER  
 ALS Vial : 11 Sample Multiplier: 1

**Instrument :**  
 MSVOA\_V  
**ClientSampleId :**  
 P035-TW001-A-01

Quant Time: Dec 29 05:05:26 2021  
 Quant Method : Z:\voasrv\HPCHEM1\MSVOA\_V\Method\SFAMVTR122721WMA.M  
 Quant Title : TRACE VOA SFAM1.0  
 QLast Update : Wed Dec 29 04:43:10 2021  
 Response via : Initial Calibration

**Manual Integrations**  
**APPROVED**  
 Reviewed By :Amit Patel 12/29/2021  
 Supervised By :Semsettin Yesilyurt 01/02/2022

Compound	R.T.	QIon	Response	Conc	Units	Dev(Min)
<b>Internal Standards</b>						
1) 1,4-Difluorobenzene	5.619	114	101799	5.000	ug/L	0.00
28) Chlorobenzene-d5	8.854	117	104061	5.000	ug/L	0.00
58) 1,4-Dichlorobenzene-d4	11.249	152	54421	5.000	ug/L	0.00
<b>System Monitoring Compounds</b>						
4) Vinyl Chloride-d3	1.568	65	515	0.067	ug/L	0.26
Spiked Amount	5.000	Range 40 - 130	Recovery =	1.400%#		
7) Chloroethane-d5	1.568	69	24060	3.768	ug/L	0.00
Spiked Amount	5.000	Range 65 - 130	Recovery =	75.400%		
11) 1,1-Dichloroethene-d2	2.108	63	33345	1.792	ug/L	0.00
Spiked Amount	5.000	Range 60 - 125	Recovery =	35.800%#		
20) 2-Butanone-d5	3.912	46	40588m	47.720	ug/L	0.00
Spiked Amount	50.000	Range 40 - 130	Recovery =	95.440%		
24) Chloroform-d	4.349	84	62319	3.834	ug/L	0.00
Spiked Amount	5.000	Range 70 - 125	Recovery =	76.600%		
26) 1,2-Dichloroethane-d4	5.034	65	30537	4.197	ug/L	0.00
Spiked Amount	5.000	Range 70 - 130	Recovery =	84.000%		
32) Benzene-d6	5.050	84	110115	3.918	ug/L	0.00
Spiked Amount	5.000	Range 70 - 125	Recovery =	78.400%		
36) 1,2-Dichloropropane-d6	6.069	67	31404	4.080	ug/L	0.00
Spiked Amount	5.000	Range 60 - 140	Recovery =	81.600%		
41) Toluene-d8	7.317	98	62892	2.271	ug/L	0.00
Spiked Amount	5.000	Range 70 - 130	Recovery =	45.400%#		
43) trans-1,3-Dichloroprop...	7.625	79	9025	2.769	ug/L	0.00
Spiked Amount	5.000	Range 55 - 130	Recovery =	55.400%		
46) 2-Hexanone-d5	8.091	63	44004	40.152	ug/L	0.00
Spiked Amount	50.000	Range 45 - 130	Recovery =	80.300%		
56) 1,1,2,2-Tetrachloroeth...	10.217	84	21926	4.172	ug/L	0.00
Spiked Amount	5.000	Range 65 - 120	Recovery =	83.400%		
66) 1,2-Dichlorobenzene-d4	11.625	152	41119	4.347	ug/L	0.00
Spiked Amount	5.000	Range 80 - 120	Recovery =	87.000%		
<b>Target Compounds</b>						
25) Chloroform	4.378	83	24594	0.891	ug/L	100

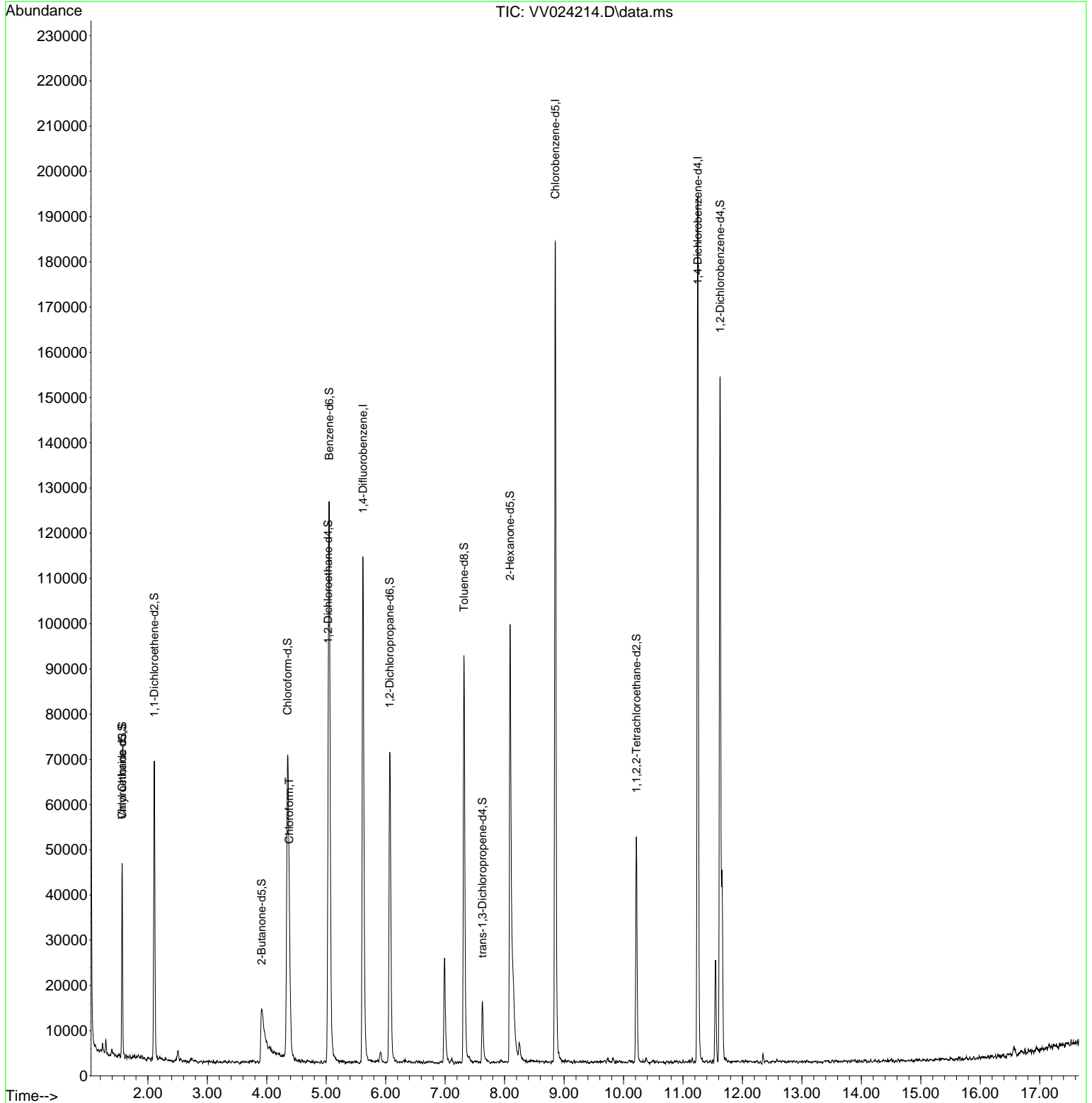
(#) = qualifier out of range (m) = manual integration (+) = signals summed

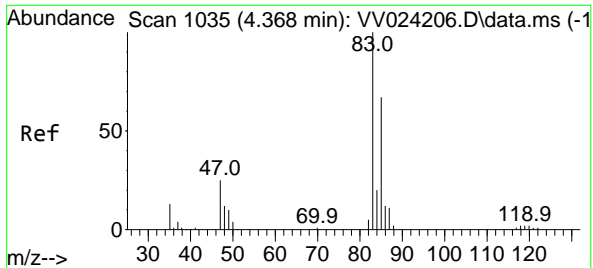
Data Path : Z:\voasrv\HPCHEM1\MSVOA\_V\Data\VV122821\  
 Data File : VV024214.D  
 Acq On : 28 Dec 2021 13:36  
 Operator : SY/MD  
 Sample : M5201-05  
 Misc : 25.0mL/MSVOA\_V/WATER  
 ALS Vial : 11 Sample Multiplier: 1

**Instrument :**  
 MSVOA\_V  
**ClientSampleId :**  
 P035-TW001-A-01

**Manual Integrations**  
**APPROVED**  
 Reviewed By :Amit Patel 12/29/2021  
 Supervised By :Semsettin Yesilyurt 01/02/2022

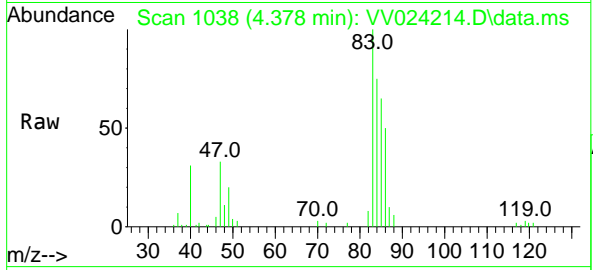
Quant Time: Dec 29 05:05:26 2021  
 Quant Method : Z:\voasrv\HPCHEM1\MSVOA\_V\Method\SFAMVTR122721WMA.M  
 Quant Title : TRACE VOA SFAM1.0  
 QLast Update : Wed Dec 29 04:43:10 2021  
 Response via : Initial Calibration





#25  
 Chloroform  
 Concen: 0.891 ug/L  
 RT: 4.378 min Scan# 10  
 Delta R.T. 0.003 min  
 Lab File: VV024214.D  
 Acq: 28 Dec 2021 13:36

Instrument : MSVOA\_V  
 ClientSampleId : P035-TW001-A-01



Tgt Ion: 83 Resp: 24594  
 Ion Ratio Lower Upper  
 83 100  
 85 64.6 45.2 84.0

Manual Integrations  
**APPROVED**  
 Reviewed By :Amit Patel 12/29/2021  
 Supervised By :Semsettin Yesilyurt 01/02/2022

