

Data Path : Z:\VOASRV\HPCHEM1\MSVOA V\DATA\VV122920\
 Data File : VV019865.D
 Acq On : 29 Dec 2020 15:40
 Operator : SY/MD
 Sample : VV1229WBL01
 Misc : 25.0mL/MSVOA V/WATER
 ALS Vial : 1 Sample Multiplier: 1

Instrument :
 MSVOA_V
 ClientSampleId :
 VBLK301

Integration Parameters: rteint.p
 Integrator: RTE
 Smoothing : ON Filtering: 5
 Sampling : 1 Min Area: 3 % of largest Peak
 Start Thrs: 0.1 Max Peaks: 100
 Stop Thrs : 0 Peak Location: TOP

If leading or trailing edge < 100 prefer < Baseline drop else tangent >
 Peak separation: 5

Method : Z:\VOASRV\HPCHEM1\MSVOA_V\METHOD\SFAMVTR122920WMA.M
 Title : TRACE VOA SFAM1.0

Signal : TIC

peak #	R.T. min	first scan	max scan	last scan	PK TY	peak height	corr. area	corr. % max.	% of total
1	1.302	60	66	80	rVB	165876	166310	16.17%	1.979%
2	1.566	140	148	158	rBV	135164	152095	14.78%	1.810%
3	2.103	305	315	331	rBV	283851	403323	39.21%	4.800%
4	2.508	429	441	456	rBV3	8128	15731	1.53%	0.187%
5	3.939	870	886	936	rBV2	61077	376402	36.59%	4.480%
6	4.354	997	1015	1050	rVB	169064	438080	42.58%	5.214%
7	5.051	1216	1232	1258	rBV2	424183	1028729	100.00%	12.243%
8	5.621	1397	1409	1433	rBV	350512	714517	69.46%	8.504%
9	5.913	1488	1500	1512	rBV4	13100	28604	2.78%	0.340%
10	6.074	1537	1550	1578	rBV	229180	486733	47.31%	5.793%
11	6.994	1823	1836	1856	rBV	106384	205324	19.96%	2.444%
12	7.321	1925	1938	1959	rBV	480095	847510	82.38%	10.086%
13	7.630	2025	2034	2059	rBV2	60785	113366	11.02%	1.349%
14	8.100	2169	2180	2218	rBV2	384533	847974	82.43%	10.092%
15	8.858	2401	2416	2444	rBV	530098	872896	84.85%	10.388%
16	10.225	2830	2841	2856	rBV	127297	202954	19.73%	2.415%
17	11.257	3150	3162	3181	rBV	531482	833099	80.98%	9.915%
18	11.633	3267	3279	3297	rBV	420134	668942	65.03%	7.961%

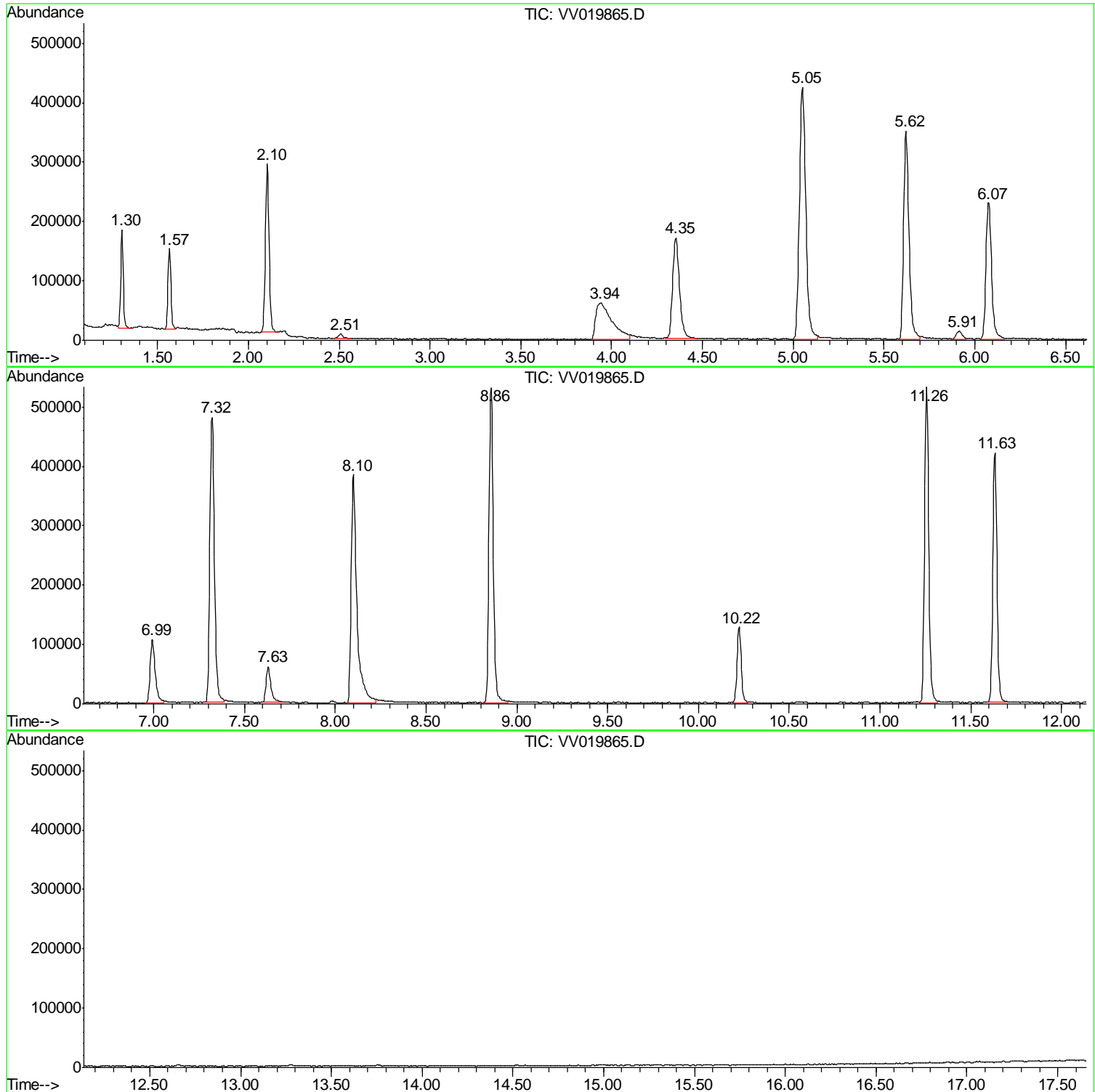
Sum of corrected areas: 8402589

Data Path : Z:\VOASRV\HPCHEM1\MSVOA V\DATA\VV122920\
Data File : VV019865.D
Acq On : 29 Dec 2020 15:40
Operator : SY/MD
Sample : VV1229WBL01
Misc : 25.0mL/MSVOA V/WATER
ALS Vial : 1 Sample Multiplier: 1

Instrument :
MSVOA_V
ClientSampled :
VBLK301

Quant Method : Z:\VOASRV\HPCHEM1\MSVOA_V\METHOD\SFAMVTR122920WMA.M
Quant Title : TRACE VOA SFAM1.0

TIC Library : C:\DATABASE\NIST11.L
TIC Integration Parameters: LSCINT.P



Data Path : Z:\VOASRV\HPCHEM1\MSVOA_V\DATA\VV122920\
Data File : VV019865.D
Acq On : 29 Dec 2020 15:40
Operator : SY/MD
Sample : VV1229WBL01
Misc : 25.0mL/MSVOA_V/WATER
ALS Vial : 1 Sample Multiplier: 1

Instrument :
MSVOA_V
ClientSampleId :
VBLK301

Quant Method : Z:\VOASRV\HPCHEM1\MSVOA_V\METHOD\SFAMVTR122920WMA.M
Quant Title : TRACE VOA SFAM1.0

TIC Library : C:\DATABASE\NIST11.L
TIC Integration Parameters: LSCINT.P

No Library Search Compounds Detected

Data Path : Z:\VOASRV\HPCHEM1\MSVOA_V\DATA\VV122920\
Data File : VV019865.D
Acq On : 29 Dec 2020 15:40
Operator : SY/MD
Sample : VV1229WBL01
Misc : 25.0mL/MSVOA_V/WATER
ALS Vial : 1 Sample Multiplier: 1

Instrument :
MSVOA_V
ClientSampleId :
VBLK301

Quant Method : Z:\VOASRV\HPCHEM1\MSVOA_V\METHOD\SFAMVTR122920WMA.M
Quant Title : TRACE VOA SFAM1.0

TIC Library : C:\DATABASE\NIST11.L
TIC Integration Parameters: LSCINT.P

TIC Top Hit name	RT	EstConc	Units	Response	--Internal Standard--			
					#	RT	Resp	Conc
