

Data Path : Z:\voasrv\HPCHEM1\MSVOA_V\Data\VV090122\
 Data File : VV027700.D
 Acq On : 02 Sep 2022 05:29
 Operator : SY/MD
 Sample : N4402-14
 Misc : 25.0mL/MSVOA_V/WATER
 ALS Vial : 30 Sample Multiplier: 1

Instrument :
 MSVOA_V
 ClientSampleId :
 DBVD3

Quant Time: Sep 03 04:13:04 2022
 Quant Method : Z:\voasrv\HPCHEM1\MSVOA_V\Method\SFAMVTR083122WMA.M
 Quant Title : TRACE VOA SFAM1.0
 QLast Update : Fri Sep 02 03:03:49 2022
 Response via : Initial Calibration

Compound	R.T.	QIon	Response	Conc	Units	Dev(Min)

Internal Standards						
1) 1,4-Difluorobenzene	5.616	114	135242	5.000	ug/L	0.00
28) Chlorobenzene-d5	8.850	117	133410	5.000	ug/L	0.00
58) 1,4-Dichlorobenzene-d4	11.249	152	58356	5.000	ug/L	0.00
System Monitoring Compounds						
4) Vinyl Chloride-d3	1.307	65	58759	3.999	ug/L	0.00
Spiked Amount	5.000	Range 40 - 130	Recovery	=	80.000%	
7) Chloroethane-d5	1.568	69	53378	4.342	ug/L	0.00
Spiked Amount	5.000	Range 65 - 130	Recovery	=	86.800%	
11) 1,1-Dichloroethene-d2	2.108	63	92073	3.202	ug/L	0.00
Spiked Amount	5.000	Range 60 - 125	Recovery	=	64.000%	
20) 2-Butanone-d5	3.889	46	76827	30.928	ug/L	0.00
Spiked Amount	50.000	Range 40 - 130	Recovery	=	61.860%	
24) Chloroform-d	4.346	84	125528	4.256	ug/L	0.00
Spiked Amount	5.000	Range 70 - 125	Recovery	=	85.200%	
26) 1,2-Dichloroethane-d4	5.031	65	59212	4.481	ug/L	0.00
Spiked Amount	5.000	Range 70 - 130	Recovery	=	89.600%	
32) Benzene-d6	5.047	84	234287	4.287	ug/L	0.00
Spiked Amount	5.000	Range 70 - 125	Recovery	=	85.800%	
36) 1,2-Dichloropropane-d6	6.066	67	69655	4.121	ug/L	0.00
Spiked Amount	5.000	Range 60 - 140	Recovery	=	82.400%	
41) Toluene-d8	7.313	98	190613	4.028	ug/L	0.00
Spiked Amount	5.000	Range 70 - 130	Recovery	=	80.600%	
43) trans-1,3-Dichloroprop...	7.622	79	20628	3.961	ug/L	0.00
Spiked Amount	5.000	Range 55 - 130	Recovery	=	79.200%	
46) 2-Hexanone-d5	8.092	63	95122	48.576	ug/L	0.00
Spiked Amount	50.000	Range 45 - 130	Recovery	=	97.160%	
56) 1,1,2,2-Tetrachloroeth...	10.214	84	43978	4.043	ug/L	0.00
Spiked Amount	5.000	Range 65 - 120	Recovery	=	80.800%	
66) 1,2-Dichlorobenzene-d4	11.622	152	64678	4.951	ug/L	0.00
Spiked Amount	5.000	Range 80 - 120	Recovery	=	99.000%	

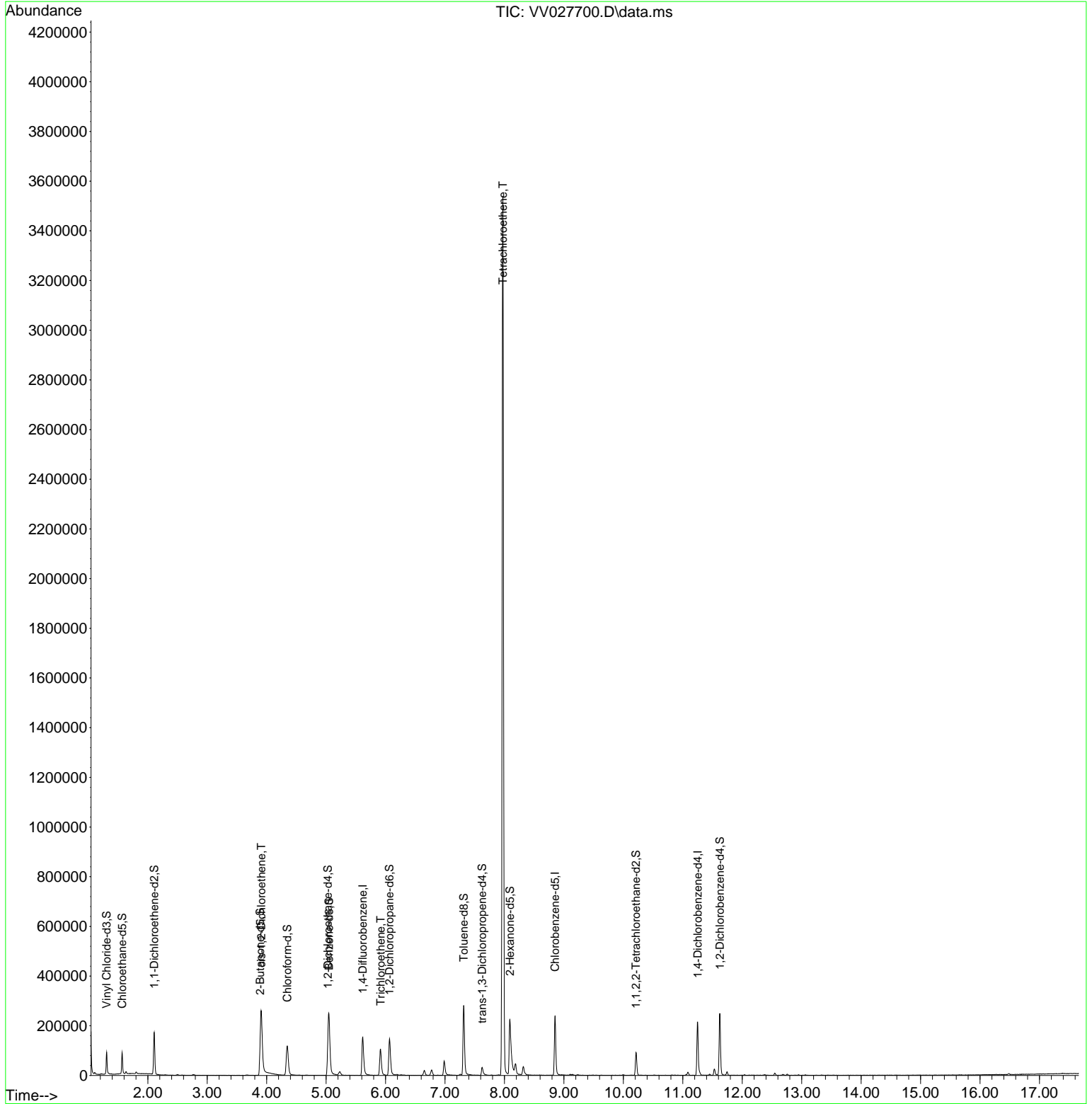
Target Compounds						Qvalue
22) cis-1,2-Dichloroethene	3.908	96	136000	10.649	ug/L	86
34) Trichloroethene	5.915	95	37675	2.945	ug/L	97
47) Tetrachloroethene	7.973	164	752703	72.577	ug/L	99

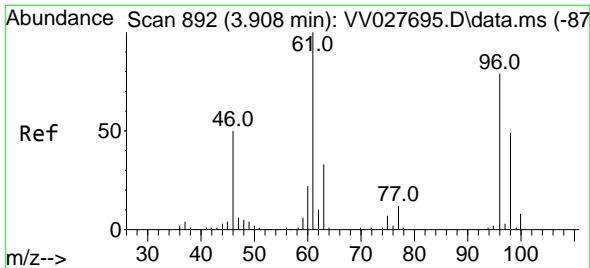
(#) = qualifier out of range (m) = manual integration (+) = signals summed

Data Path : Z:\voasrv\HPCHEM1\MSVOA_V\Data\VV090122\
 Data File : VV027700.D
 Acq On : 02 Sep 2022 05:29
 Operator : SY/MD
 Sample : N4402-14
 Misc : 25.0mL/MSVOA_V/WATER
 ALS Vial : 30 Sample Multiplier: 1

Instrument :
 MSVOA_V
 ClientSampleId :
 DBVD3

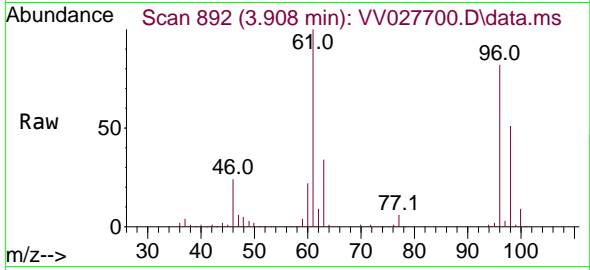
Quant Time: Sep 03 04:13:04 2022
 Quant Method : Z:\voasrv\HPCHEM1\MSVOA_V\Method\SFAMVTR083122WMA.M
 Quant Title : TRACE VOA SFAM1.0
 QLast Update : Fri Sep 02 03:03:49 2022
 Response via : Initial Calibration





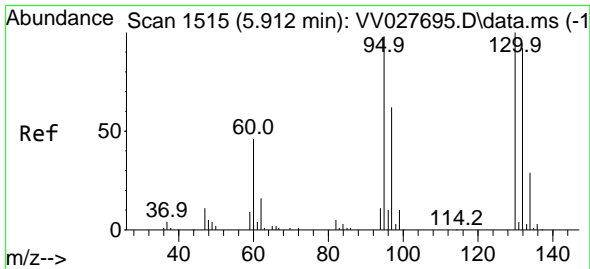
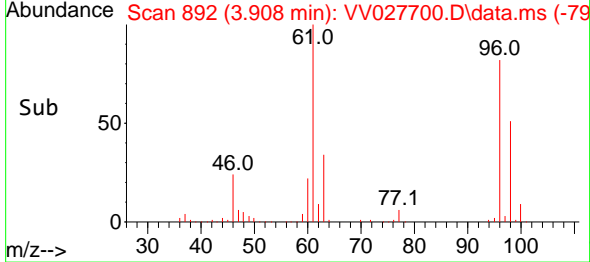
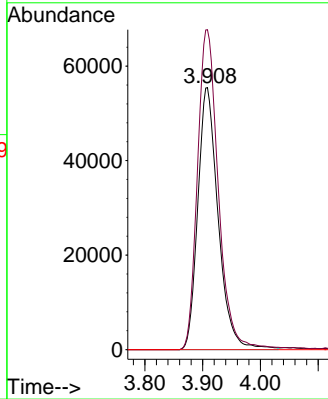
#22
 cis-1,2-Dichloroethene
 Concen: 10.649 ug/L
 RT: 3.908 min Scan# 892
 Delta R.T. -0.000 min
 Lab File: VV027700.D
 Acq: 02 Sep 2022 05:29

Instrument : MSVOA_V
 ClientSampleId : DBVD3



Tgt Ion: 96 Resp: 136000

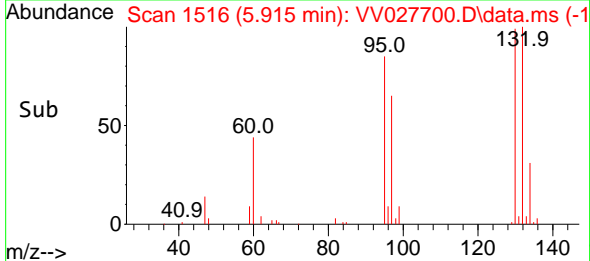
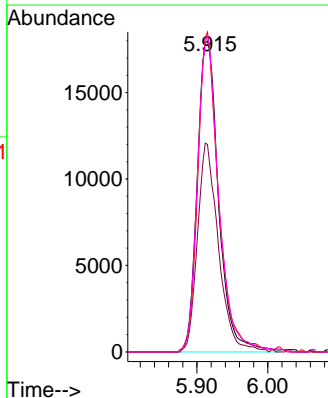
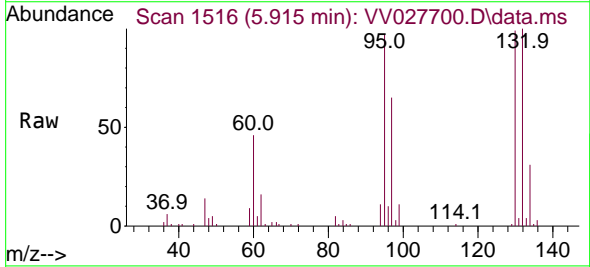
Ion	Ratio	Lower	Upper
96	100		
61	122.2	96.9	180.1
68	0.0	0.0	0.0

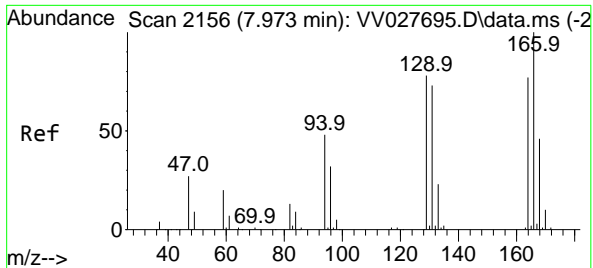


#34
 Trichloroethene
 Concen: 2.945 ug/L
 RT: 5.915 min Scan# 1516
 Delta R.T. 0.003 min
 Lab File: VV027700.D
 Acq: 02 Sep 2022 05:29

Tgt Ion: 95 Resp: 37675

Ion	Ratio	Lower	Upper
95	100		
97	66.8	46.1	85.5
132	103.0	67.3	125.1
130	101.8	71.2	132.2





#47
 Tetrachloroethene
 Concen: 72.577 ug/L
 RT: 7.973 min Scan# 2156
 Delta R.T. -0.000 min
 Lab File: VV027700.D
 Acq: 02 Sep 2022 05:29

Instrument : MSVOA_V
 ClientSampleId : DBVD3

Tgt Ion:164 Resp: 752703

Ion	Ratio	Lower	Upper
164	100		
129	95.8	65.9	122.3
131	93.4	64.5	119.7
166	127.4	88.8	165.0

