

Data Path : Z:\voasrv\HPCHEM1\MSVOA\_V\Data\VV090122\  
 Data File : VV027710.D  
 Acq On : 02 Sep 2022 09:33  
 Operator : SY/MD  
 Sample : N4404-14  
 Misc : 25.0mL/MSVOA\_V/WATER  
 ALS Vial : 40 Sample Multiplier: 1

Instrument :  
 MSVOA\_V  
 ClientSampleId :  
 DBVC5

Manual Integrations  
 APPROVED

Reviewed By :John Carlone 09/03/2022  
 Supervised By :Mahesh Dadoda 09/03/2022

Quant Time: Sep 03 04:15:49 2022  
 Quant Method : Z:\voasrv\HPCHEM1\MSVOA\_V\Method\SFAMVTR083122WMA.M  
 Quant Title : TRACE VOA SFAM1.0  
 QLast Update : Fri Sep 02 03:03:49 2022  
 Response via : Initial Calibration

Compound	R.T.	QIon	Response	Conc	Units	Dev(Min)
Internal Standards						
1) 1,4-Difluorobenzene	5.593	114	140009	5.000	ug/L	-0.02
28) Chlorobenzene-d5	8.857	117	114656	5.000	ug/L	0.00
58) 1,4-Dichlorobenzene-d4	11.249	152	50492	5.000	ug/L	0.00
System Monitoring Compounds						
4) Vinyl Chloride-d3	1.297	65	55094	3.622	ug/L	0.00
Spiked Amount	5.000	Range 40 - 130	Recovery	=	72.400%	
7) Chloroethane-d5	1.561	69	50558	3.973	ug/L	0.00
Spiked Amount	5.000	Range 65 - 130	Recovery	=	79.400%	
11) 1,1-Dichloroethene-d2	2.098	63	88174	2.962	ug/L	0.00
Spiked Amount	5.000	Range 60 - 125	Recovery	=	59.200%#	
20) 2-Butanone-d5	3.950	46	143724	55.888	ug/L	0.06
Spiked Amount	50.000	Range 40 - 130	Recovery	=	111.780%	
24) Chloroform-d	4.346	84	124244	4.069	ug/L	0.00
Spiked Amount	5.000	Range 70 - 125	Recovery	=	81.400%	
26) 1,2-Dichloroethane-d4	5.027	65	67937	4.967	ug/L	0.00
Spiked Amount	5.000	Range 70 - 130	Recovery	=	99.400%	
32) Benzene-d6	5.030	84	228370	4.863	ug/L	-0.02
Spiked Amount	5.000	Range 70 - 125	Recovery	=	97.200%	
36) 1,2-Dichloropropane-d6	6.046	67	68918	4.744	ug/L	-0.02
Spiked Amount	5.000	Range 60 - 140	Recovery	=	94.800%	
41) Toluene-d8	7.310	98	194682	4.787	ug/L	0.00
Spiked Amount	5.000	Range 70 - 130	Recovery	=	95.800%	
43) trans-1,3-Dichloroprop...	7.632	79	18793	4.199	ug/L	0.00
Spiked Amount	5.000	Range 55 - 130	Recovery	=	84.000%	
46) 2-Hexanone-d5	8.114	63	83184	49.428	ug/L	0.03
Spiked Amount	50.000	Range 45 - 130	Recovery	=	98.860%	
56) 1,1,2,2-Tetrachloroeth...	10.220	84	43559	4.660	ug/L	0.00
Spiked Amount	5.000	Range 65 - 120	Recovery	=	93.200%	
66) 1,2-Dichlorobenzene-d4	11.622	152	61530	5.443	ug/L	0.00
Spiked Amount	5.000	Range 80 - 120	Recovery	=	108.800%	
Target Compounds						
5) Vinyl chloride	1.301	62	7473	0.430	ug/L #	77
12) 1,1-Dichloroethene	2.108	96	4237	0.363	ug/L #	1
13) Acetone	2.240	43	8839m	5.080	ug/L	
14) Carbon disulfide	2.285	76	7784	0.211	ug/L #	91
15) Methyl Acetate	2.452	43	3725	0.807	ug/L	94
22) cis-1,2-Dichloroethene	3.902	96	29560	2.236	ug/L	92
25) Chloroform	4.371	83	28053	1.030	ug/L	100
34) Trichloroethene	5.879	95	21883	1.991	ug/L	96
45) 1,1,2-Trichloroethane	7.850	97	2646	0.363	ug/L	94
47) Tetrachloroethene	7.976	164	47384	5.316	ug/L	99
53) m,p-Xylene	9.146	106	2767	0.159	ug/L	97
59) Bromoform	9.734	173	5373	1.498	ug/L	95

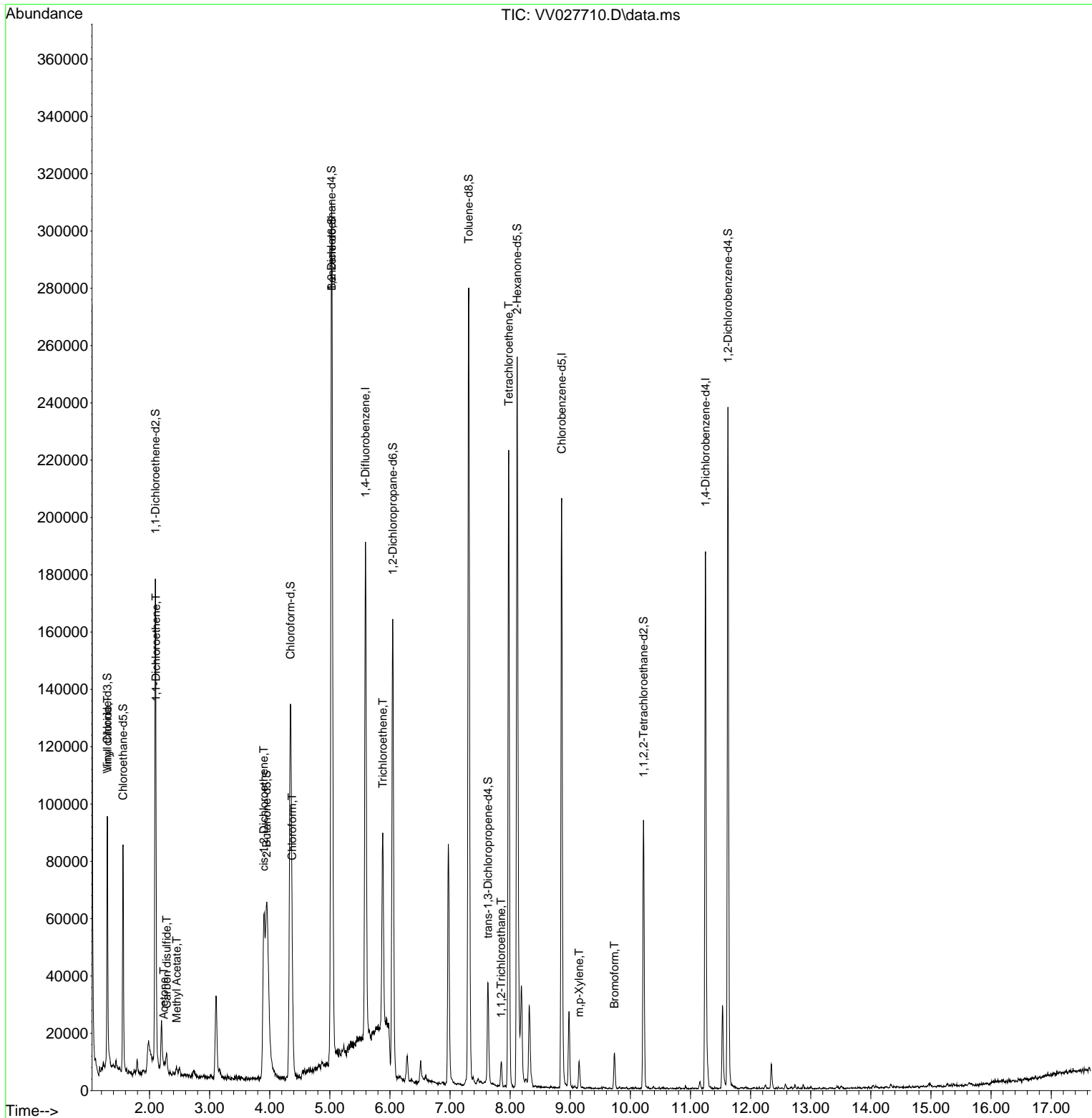
(#) = qualifier out of range (m) = manual integration (+) = signals summed

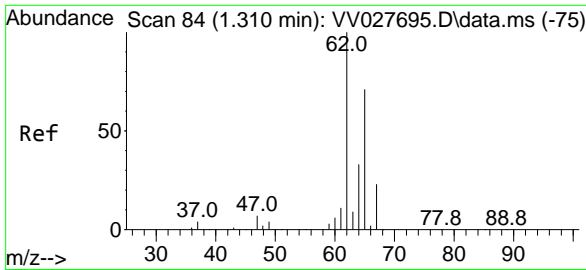
Data Path : Z:\voasrv\HPCHEM1\MSVOA\_V\Data\VV090122\  
 Data File : VV027710.D  
 Acq On : 02 Sep 2022 09:33  
 Operator : SY/MD  
 Sample : N4404-14  
 Misc : 25.0mL/MSVOA\_V/WATER  
 ALS Vial : 40 Sample Multiplier: 1

**Instrument :**  
 MSVOA\_V  
**ClientSampleId :**  
 DBVC5

Quant Time: Sep 03 04:15:49 2022  
 Quant Method : Z:\voasrv\HPCHEM1\MSVOA\_V\Method\SFAMVTR083122WMA.M  
 Quant Title : TRACE VOA SFAM1.0  
 QLast Update : Fri Sep 02 03:03:49 2022  
 Response via : Initial Calibration

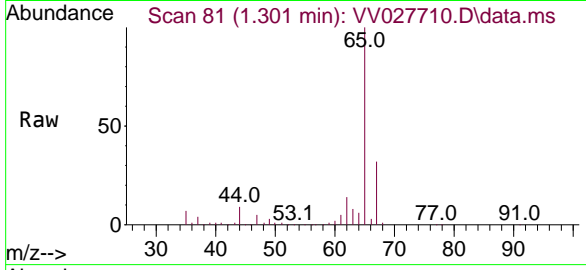
**Manual Integrations**  
**APPROVED**  
 Reviewed By : John Carlone 09/03/2022  
 Supervised By : Mahesh Dadoda 09/03/2022





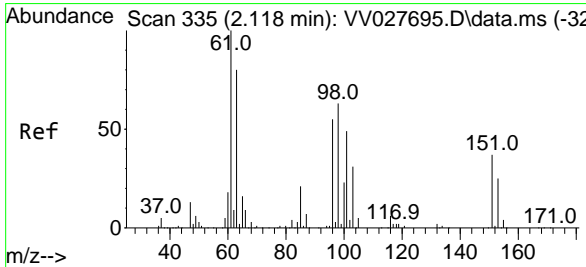
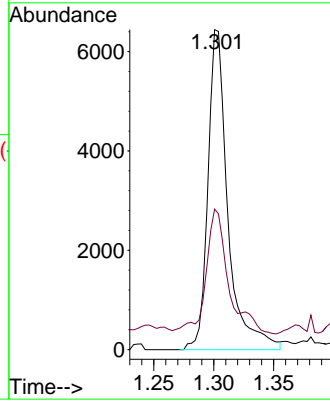
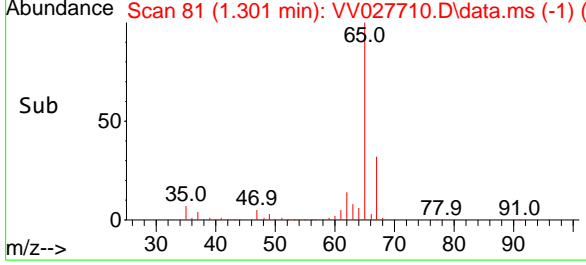
#5  
 Vinyl chloride  
 Concen: 0.430 ug/L  
 RT: 1.301 min Scan# 81  
 Delta R.T. -0.010 min  
 Lab File: VV027710.D  
 Acq: 02 Sep 2022 09:33

Instrument : MSVOA\_V  
 Client SampleId : DBVC5

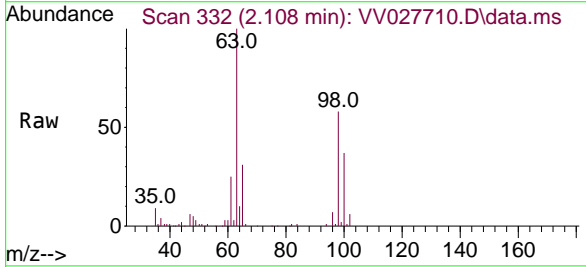


Tgt Ion: 62 Resp: 7473  
 Ion Ratio Lower Upper  
 62 100  
 64 43.9 21.8 40.4#

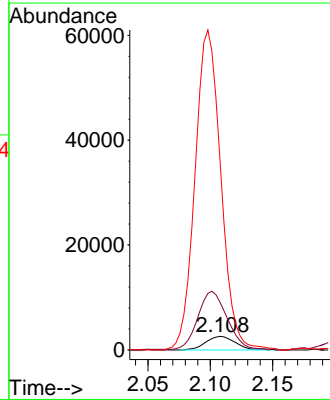
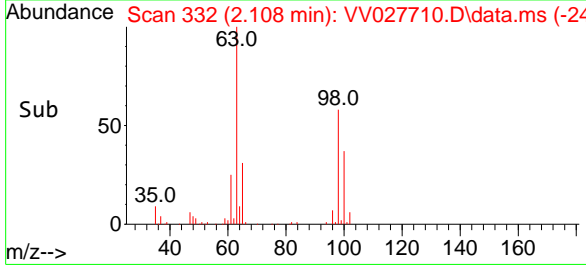
Manual Integrations  
**APPROVED**  
 Reviewed By :John Carlone 09/03/2022  
 Supervised By :Mahesh Dadoda 09/03/2022

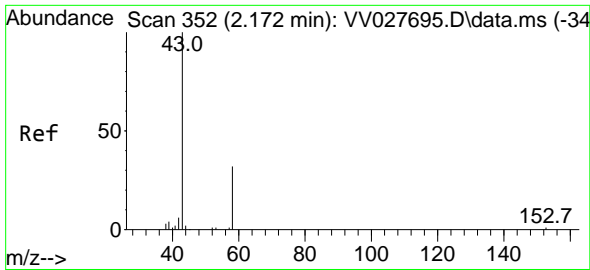


#12  
 1,1-Dichloroethene  
 Concen: 0.363 ug/L  
 RT: 2.108 min Scan# 332  
 Delta R.T. -0.010 min  
 Lab File: VV027710.D  
 Acq: 02 Sep 2022 09:33



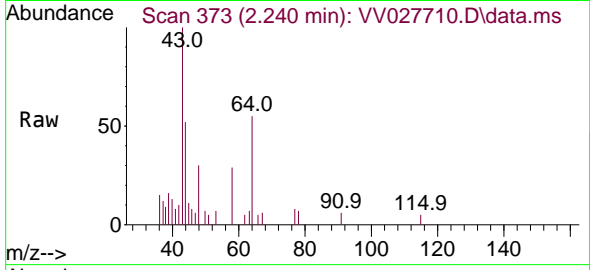
Tgt Ion: 96 Resp: 4237  
 Ion Ratio Lower Upper  
 96 100  
 61 355.1 134.3 249.3#  
 63 1419.1 105.7 196.3#





#13  
 Acetone  
 Concen: 5.080 ug/L m  
 RT: 2.240 min Scan# 31  
 Delta R.T. 0.067 min  
 Lab File: VV027710.D  
 Acq: 02 Sep 2022 09:33

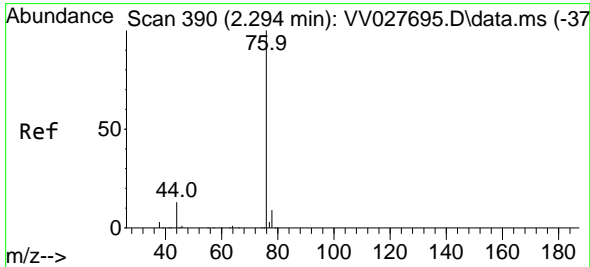
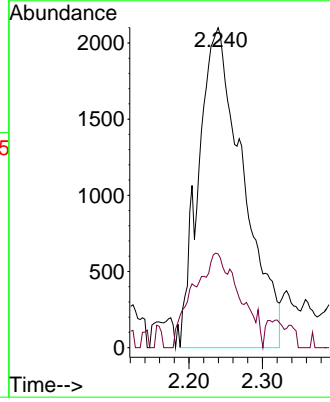
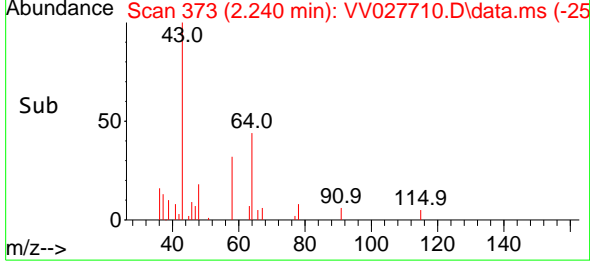
Instrument : MSVOA\_V  
 ClientSampleId : DBVC5



Tgt Ion: 43 Resp: 8839  
 Ion Ratio Lower Upper  
 43 100  
 58 30.5 0.0 38.4

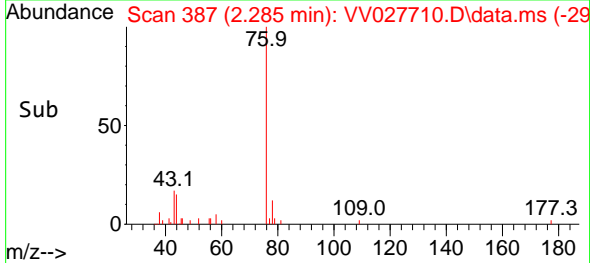
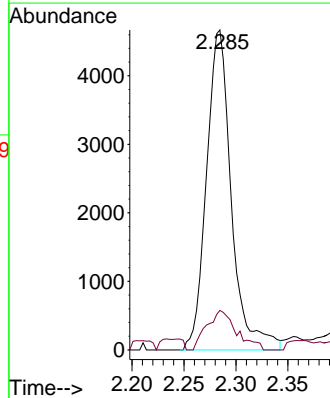
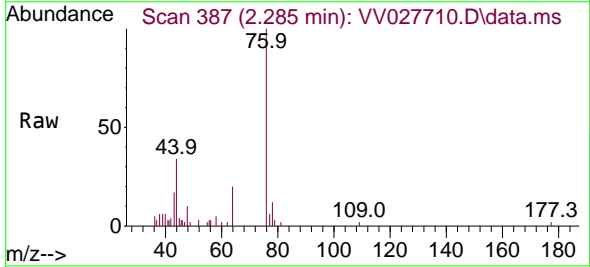
Manual Integrations  
**APPROVED**

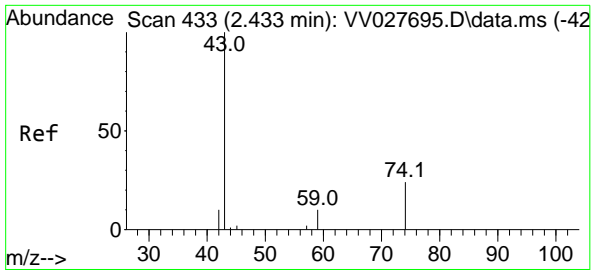
Reviewed By :John Carlone 09/03/2022  
 Supervised By :Mahesh Dadoda 09/03/2022



#14  
 Carbon disulfide  
 Concen: 0.211 ug/L  
 RT: 2.285 min Scan# 387  
 Delta R.T. -0.010 min  
 Lab File: VV027710.D  
 Acq: 02 Sep 2022 09:33

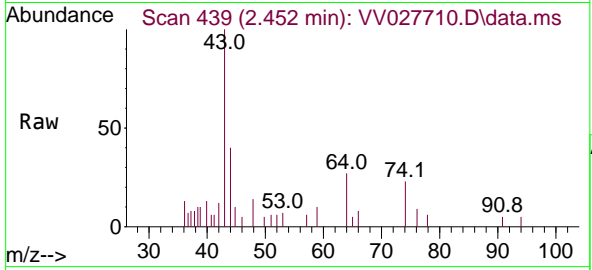
Tgt Ion: 76 Resp: 7784  
 Ion Ratio Lower Upper  
 76 100  
 78 12.3 7.4 11.0#





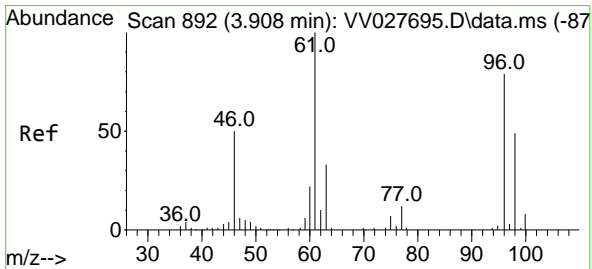
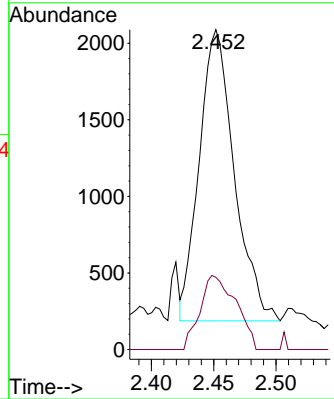
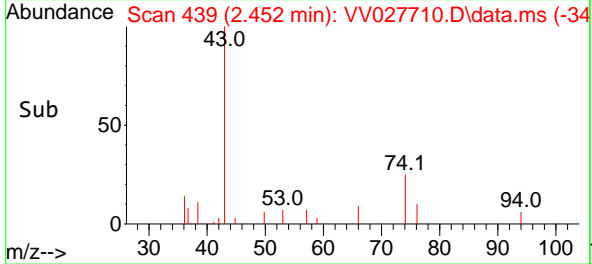
#15  
 Methyl Acetate  
 Concen: 0.807 ug/L  
 RT: 2.452 min Scan# 439  
 Delta R.T. 0.019 min  
 Lab File: VV027710.D  
 Acq: 02 Sep 2022 09:33

Instrument : MSVOA\_V  
 ClientSampleId : DBVC5

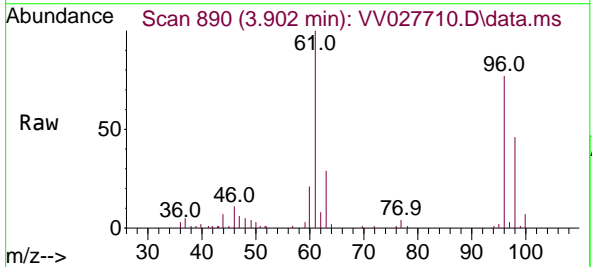


Tgt Ion: 43 Resp: 3725  
 Ion Ratio Lower Upper  
 43 100  
 74 25.9 18.2 27.4

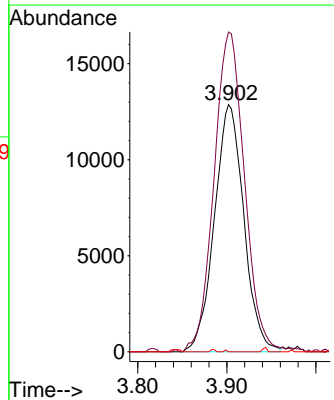
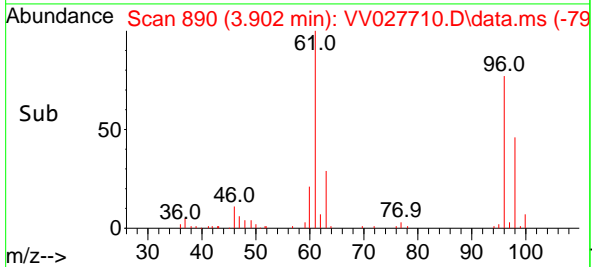
Manual Integrations  
**APPROVED**  
 Reviewed By :John Carlone 09/03/2022  
 Supervised By :Mahesh Dadoda 09/03/2022

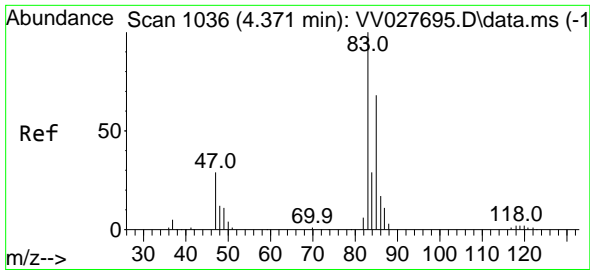


#22  
 cis-1,2-Dichloroethene  
 Concen: 2.236 ug/L  
 RT: 3.902 min Scan# 890  
 Delta R.T. -0.007 min  
 Lab File: VV027710.D  
 Acq: 02 Sep 2022 09:33



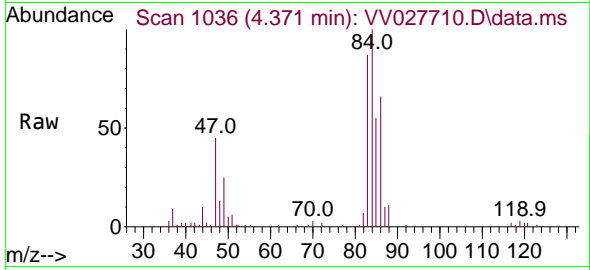
Tgt Ion: 96 Resp: 29560  
 Ion Ratio Lower Upper  
 96 100  
 61 129.4 96.9 180.1  
 68 0.0 0.0 0.0





#25  
 Chloroform  
 Concen: 1.030 ug/L  
 RT: 4.371 min Scan# 1036  
 Delta R.T. -0.000 min  
 Lab File: VV027710.D  
 Acq: 02 Sep 2022 09:33

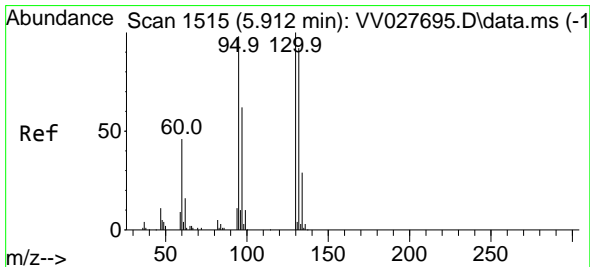
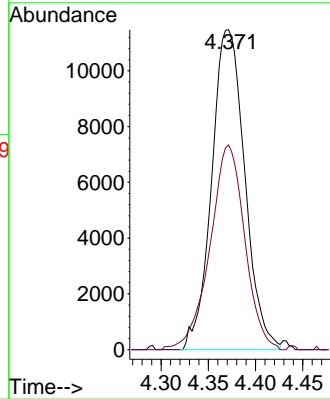
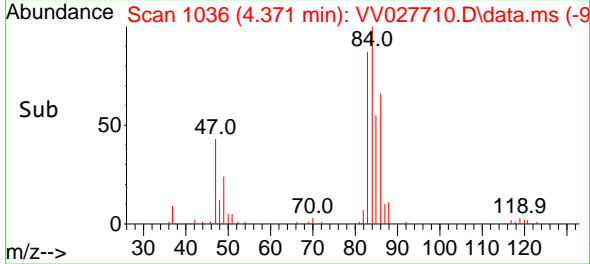
Instrument : MSVOA\_V  
 Client Sample Id : DBVC5



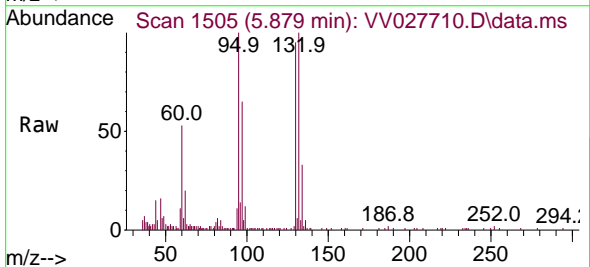
Tgt Ion: 83 Resp: 2805  
 Ion Ratio Lower Upper  
 83 100  
 85 64.0 44.7 83.1

Manual Integrations  
**APPROVED**

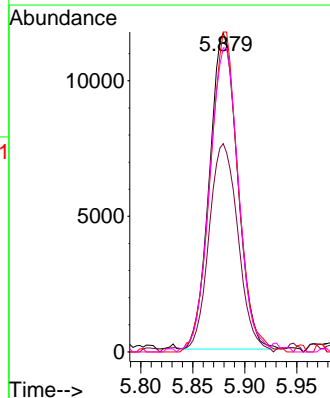
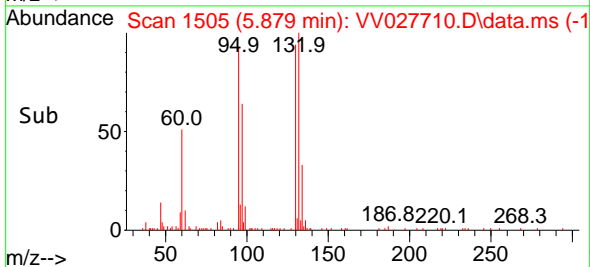
Reviewed By : John Carlone 09/03/2022  
 Supervised By : Mahesh Dadoda 09/03/2022

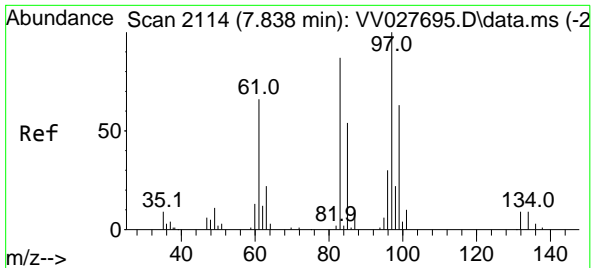


#34  
 Trichloroethene  
 Concen: 1.991 ug/L  
 RT: 5.879 min Scan# 1505  
 Delta R.T. -0.032 min  
 Lab File: VV027710.D  
 Acq: 02 Sep 2022 09:33



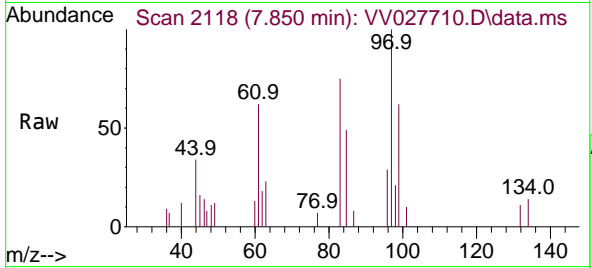
Tgt Ion: 95 Resp: 21883  
 Ion Ratio Lower Upper  
 95 100  
 97 65.3 46.1 85.5  
 132 100.2 67.3 125.1  
 130 95.3 71.2 132.2





#45  
 1,1,2-Trichloroethane  
 Concen: 0.363 ug/L  
 RT: 7.850 min Scan# 2118  
 Delta R.T. 0.013 min  
 Lab File: VV027710.D  
 Acq: 02 Sep 2022 09:33

Instrument : MSVOA\_V  
 ClientSampleID : DBVC5

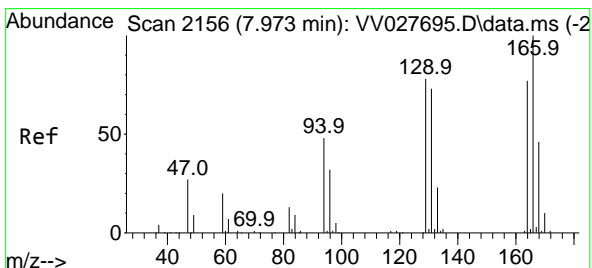
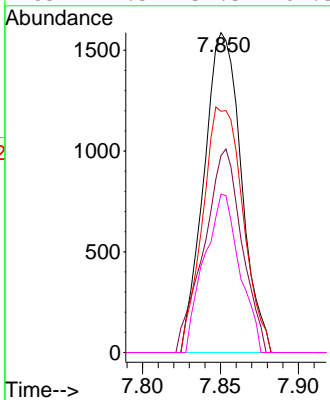
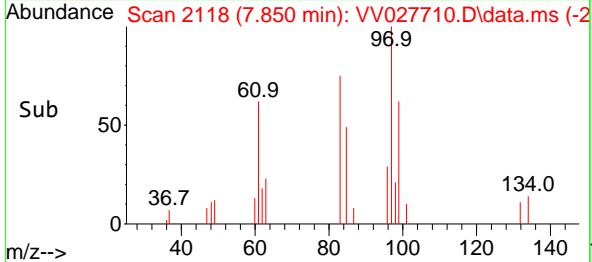


Tgt Ion: 97 Resp: 2646

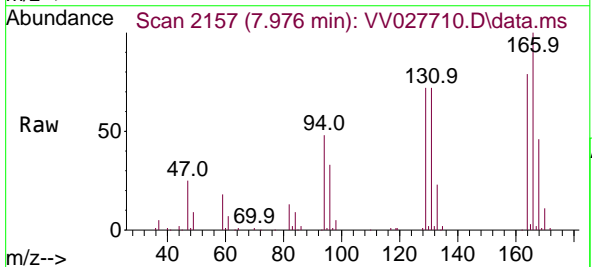
Ion	Ratio	Lower	Upper
97	100		
99	61.6	41.3	76.7
83	75.4	57.5	106.9
85	49.5	37.3	69.3

Manual Integrations  
 APPROVED

Reviewed By :John Carlone 09/03/2022  
 Supervised By :Mahesh Dadoda 09/03/2022

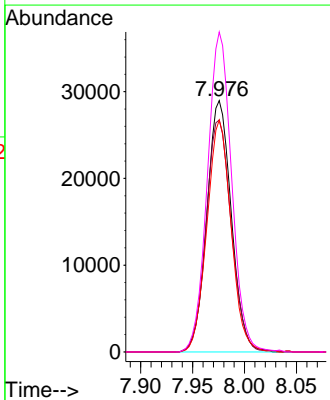
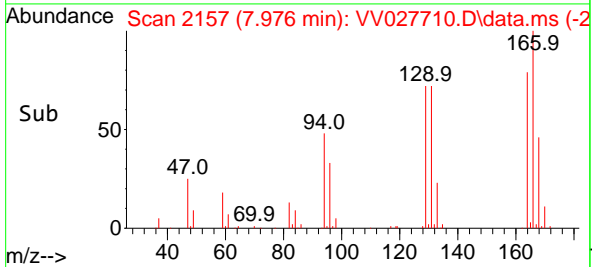


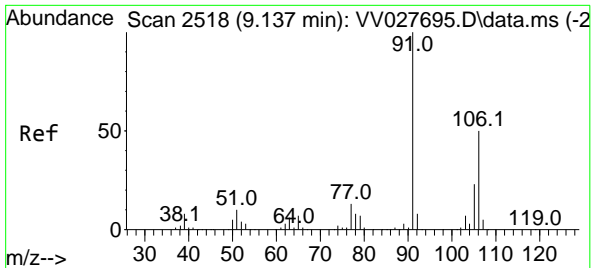
#47  
 Tetrachloroethene  
 Concen: 5.316 ug/L  
 RT: 7.976 min Scan# 2157  
 Delta R.T. 0.003 min  
 Lab File: VV027710.D  
 Acq: 02 Sep 2022 09:33



Tgt Ion:164 Resp: 47384

Ion	Ratio	Lower	Upper
164	100		
129	92.3	65.9	122.3
131	92.3	64.5	119.7
166	127.4	88.8	165.0





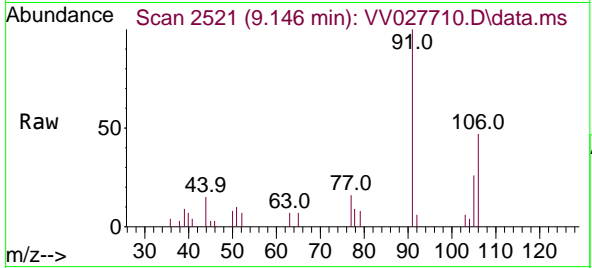
#53  
 m,p-Xylene  
 Concen: 0.159 ug/L  
 RT: 9.146 min Scan# 2518  
 Delta R.T. 0.009 min  
 Lab File: VV027710.D  
 Acq: 02 Sep 2022 09:33

Instrument :

MSVOA\_V

ClientSampleId :

DBVC5



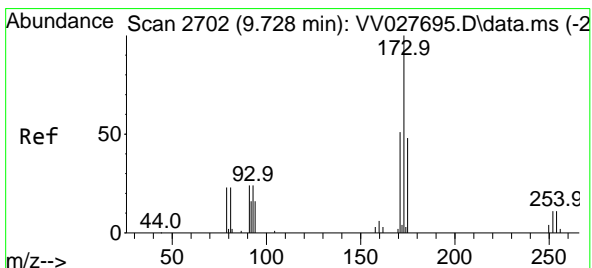
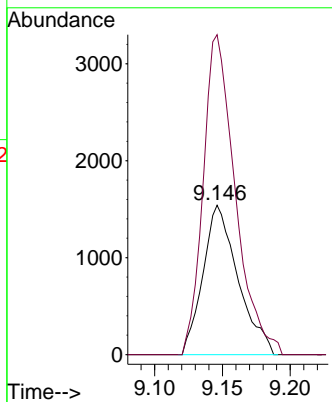
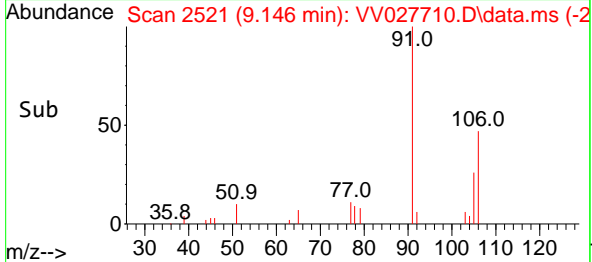
Tgt Ion:106 Resp: 276  
 Ion Ratio Lower Upper  
 106 100  
 91 214.4 147.3 273.5

Manual Integrations

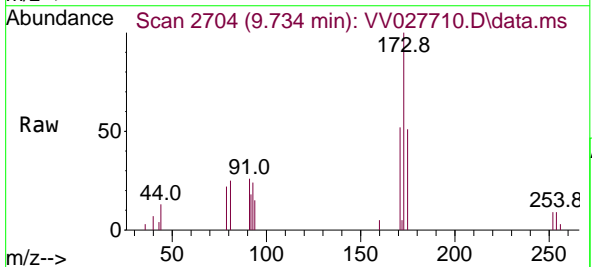
APPROVED

Reviewed By :John Carlone 09/03/2022

Supervised By :Mahesh Dadoda 09/03/2022



#59  
 Bromoform  
 Concen: 1.498 ug/L  
 RT: 9.734 min Scan# 2704  
 Delta R.T. 0.006 min  
 Lab File: VV027710.D  
 Acq: 02 Sep 2022 09:33



Tgt Ion:173 Resp: 5373  
 Ion Ratio Lower Upper  
 173 100  
 175 53.0 39.0 58.4  
 254 8.7 7.0 10.4

