

Data Path : Z:\voasrv\HPCHEM1\MSVOA_V\Data\VW102122\
 Data File : VV028675.D
 Acq On : 21 Oct 2022 20:44
 Operator : SY/MD
 Sample : N5233-03
 Misc : 25.0mL/MSVOA_V/WATER
 ALS Vial : 28 Sample Multiplier: 1

Instrument :
 MSVOA_V
ClientSampleId :
 BHA54

Quant Time: Oct 21 23:06:37 2022
 Quant Method : Z:\voasrv\HPCHEM1\MSVOA_V\Method\SFAMVTR102022WMA.M
 Quant Title : TRACE VOA SFAM1.0
 QLast Update : Fri Oct 21 22:58:36 2022
 Response via : Initial Calibration

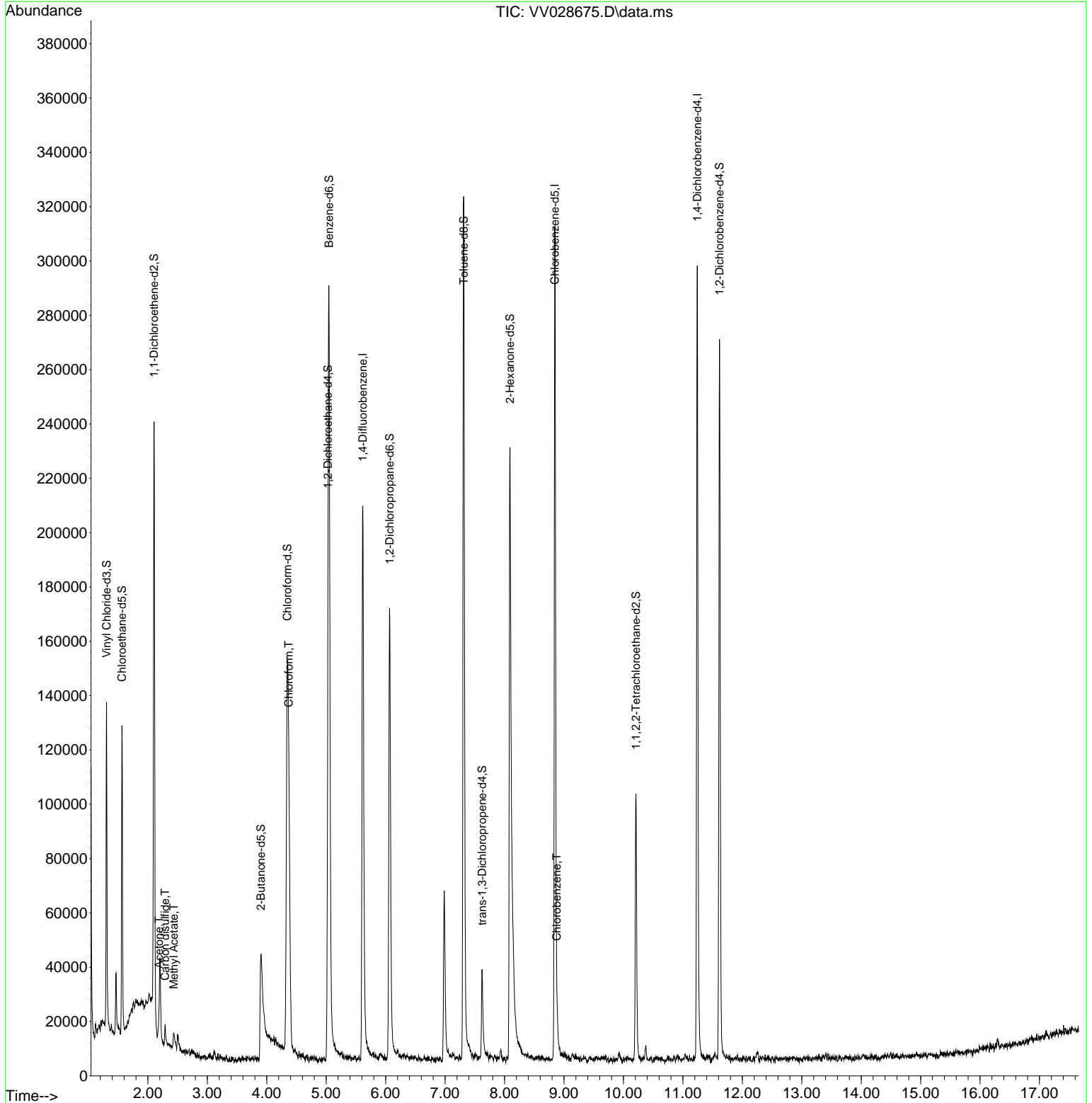
| Compound | R.T. | QIon | Response | Conc | Units | Dev(Min) |
|------------------------------------|--------|----------------|----------|--------|----------|----------|
| Internal Standards | | | | | | |
| 1) 1,4-Difluorobenzene | 5.616 | 114 | 170394 | 5.000 | ug/L | 0.02 |
| 28) Chlorobenzene-d5 | 8.847 | 117 | 159243 | 5.000 | ug/L | 0.00 |
| 58) 1,4-Dichlorobenzene-d4 | 11.243 | 152 | 70021 | 5.000 | ug/L | 0.00 |
| System Monitoring Compounds | | | | | | |
| 4) Vinyl Chloride-d3 | 1.304 | 65 | 82194 | 4.872 | ug/L | 0.00 |
| Spiked Amount | 5.000 | Range 40 - 130 | Recovery | = | 97.400% | |
| 7) Chloroethane-d5 | 1.564 | 69 | 73108 | 5.513 | ug/L | 0.00 |
| Spiked Amount | 5.000 | Range 65 - 130 | Recovery | = | 110.200% | |
| 11) 1,1-Dichloroethene-d2 | 2.105 | 63 | 122944 | 4.194 | ug/L | 0.00 |
| Spiked Amount | 5.000 | Range 60 - 125 | Recovery | = | 83.800% | |
| 20) 2-Butanone-d5 | 3.902 | 46 | 93155 | 29.339 | ug/L | -0.05 |
| Spiked Amount | 50.000 | Range 40 - 130 | Recovery | = | 58.680% | |
| 24) Chloroform-d | 4.346 | 84 | 124381 | 4.971 | ug/L | 0.02 |
| Spiked Amount | 5.000 | Range 70 - 125 | Recovery | = | 99.400% | |
| 26) 1,2-Dichloroethane-d4 | 5.031 | 65 | 59734 | 4.407 | ug/L | 0.00 |
| Spiked Amount | 5.000 | Range 70 - 130 | Recovery | = | 88.200% | |
| 32) Benzene-d6 | 5.047 | 84 | 254938 | 3.680 | ug/L | 0.02 |
| Spiked Amount | 5.000 | Range 70 - 125 | Recovery | = | 73.600% | |
| 36) 1,2-Dichloropropane-d6 | 6.066 | 67 | 82548 | 3.800 | ug/L | 0.00 |
| Spiked Amount | 5.000 | Range 60 - 140 | Recovery | = | 76.000% | |
| 41) Toluene-d8 | 7.313 | 98 | 209251 | 4.176 | ug/L | 0.01 |
| Spiked Amount | 5.000 | Range 70 - 130 | Recovery | = | 83.600% | |
| 43) trans-1,3-Dichloroprop... | 7.622 | 79 | 19105 | 3.622 | ug/L | 0.00 |
| Spiked Amount | 5.000 | Range 55 - 130 | Recovery | = | 72.400% | |
| 46) 2-Hexanone-d5 | 8.091 | 63 | 110693 | 50.549 | ug/L | -0.01 |
| Spiked Amount | 50.000 | Range 45 - 130 | Recovery | = | 101.100% | |
| 56) 1,1,2,2-Tetrachloroeth... | 10.210 | 84 | 49140 | 4.789 | ug/L | 0.00 |
| Spiked Amount | 5.000 | Range 65 - 120 | Recovery | = | 95.800% | |
| 66) 1,2-Dichlorobenzene-d4 | 11.615 | 152 | 63301 | 5.030 | ug/L | 0.00 |
| Spiked Amount | 5.000 | Range 80 - 120 | Recovery | = | 100.600% | |
| Target Compounds | | | | | | |
| 13) Acetone | 2.185 | 43 | 8904 | 4.375 | ug/L | 88 |
| 14) Carbon disulfide | 2.291 | 76 | 8644 | 0.328 | ug/L # | 88 |
| 15) Methyl Acetate | 2.436 | 43 | 8221 | 1.358 | ug/L | 92 |
| 25) Chloroform | 4.371 | 83 | 79461 | 2.994 | ug/L | 98 |
| 51) Chlorobenzene | 8.879 | 112 | 4596 | 0.127 | ug/L | 99 |

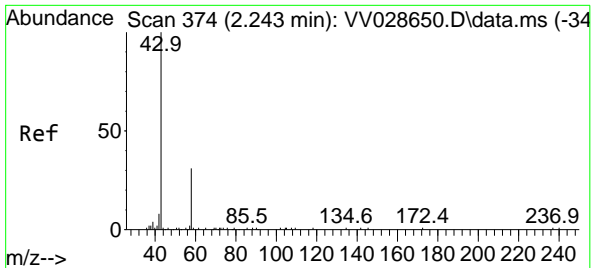
(#) = qualifier out of range (m) = manual integration (+) = signals summed

Data Path : Z:\voasrv\HPCHEM1\MSVOA_V\Data\VV102122\
 Data File : VV028675.D
 Acq On : 21 Oct 2022 20:44
 Operator : SY/MD
 Sample : N5233-03
 Misc : 25.0mL/MSVOA_V/WATER
 ALS Vial : 28 Sample Multiplier: 1

Instrument :
 MSVOA_V
 ClientSampleId :
 BHA54

Quant Time: Oct 21 23:06:37 2022
 Quant Method : Z:\voasrv\HPCHEM1\MSVOA_V\Method\SFAMVTR102022WMA.M
 Quant Title : TRACE VOA SFAM1.0
 QLast Update : Fri Oct 21 22:58:36 2022
 Response via : Initial Calibration

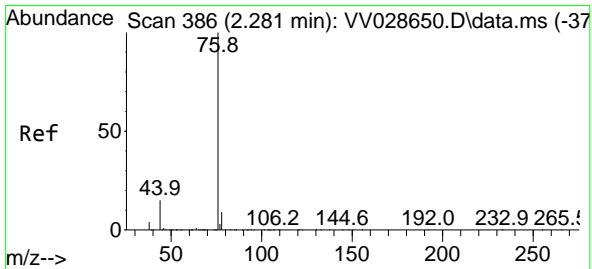
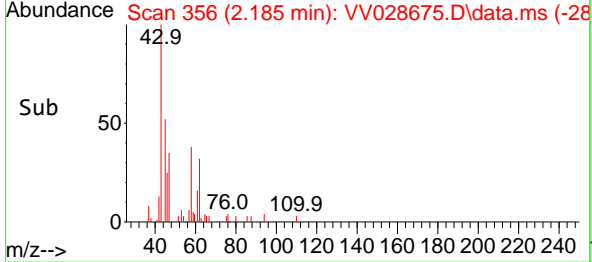
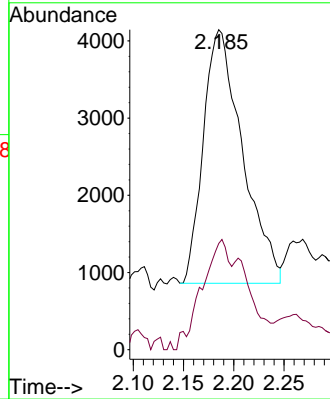
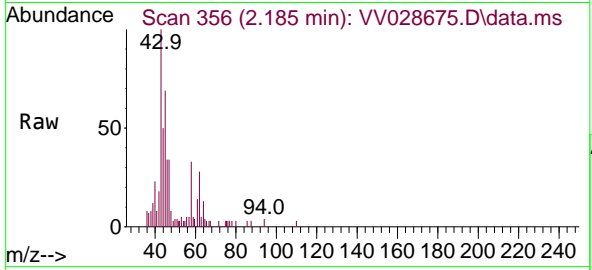




#13
 Acetone
 Concen: 4.375 ug/L
 RT: 2.185 min Scan# 311
 Delta R.T. -0.058 min
 Lab File: VV028675.D
 Acq: 21 Oct 2022 20:44

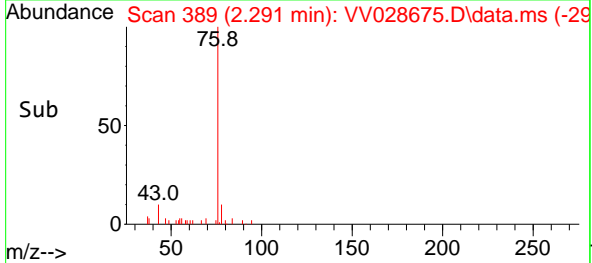
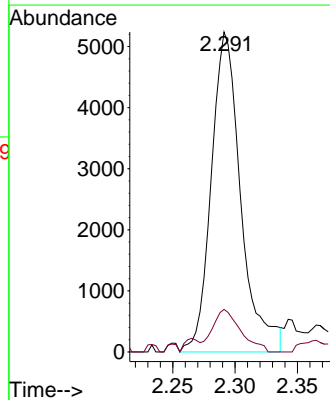
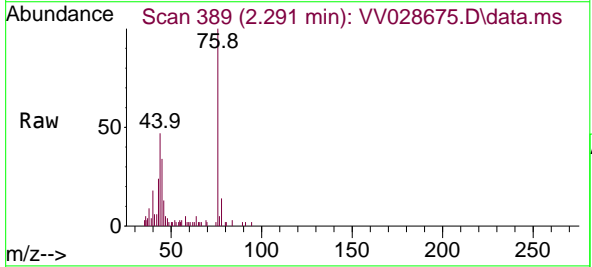
Instrument : MSVOA_V
 Client SampleId : BHA54

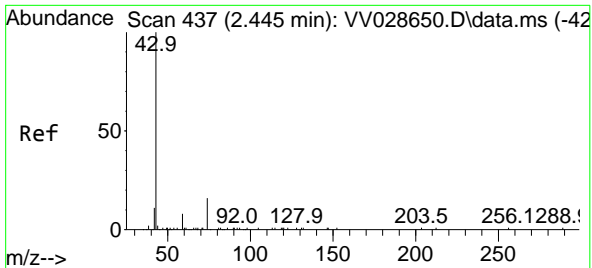
Tgt Ion: 43 Resp: 8904
 Ion Ratio Lower Upper
 43 100
 58 31.0 0.0 50.2



#14
 Carbon disulfide
 Concen: 0.328 ug/L
 RT: 2.291 min Scan# 389
 Delta R.T. 0.010 min
 Lab File: VV028675.D
 Acq: 21 Oct 2022 20:44

Tgt Ion: 76 Resp: 8644
 Ion Ratio Lower Upper
 76 100
 78 13.3 7.1 10.7#

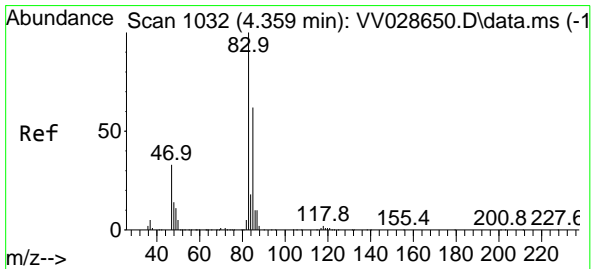
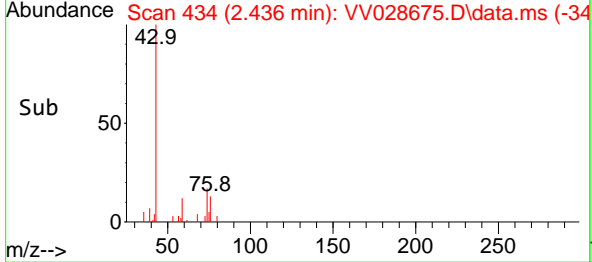
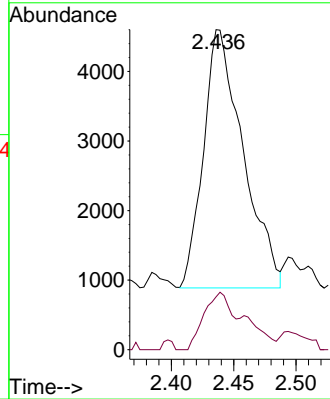
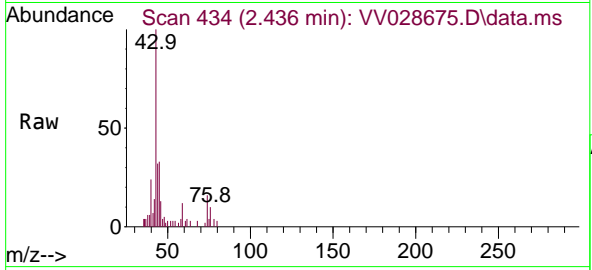




#15
 Methyl Acetate
 Concen: 1.358 ug/L
 RT: 2.436 min Scan# 41
 Delta R.T. -0.010 min
 Lab File: VV028675.D
 Acq: 21 Oct 2022 20:44

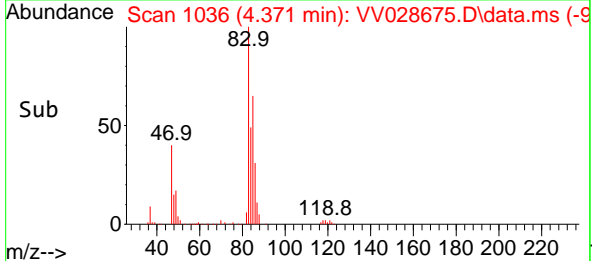
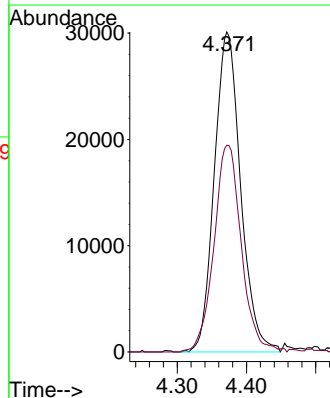
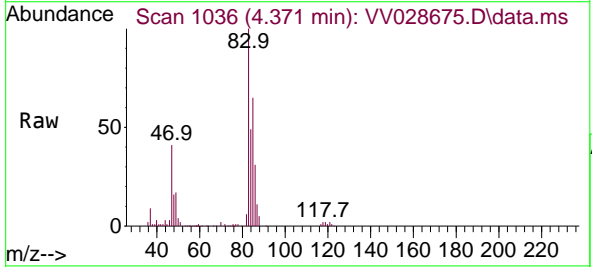
Instrument :
 MSVOA_V
 ClientSampleId :
 BHA54

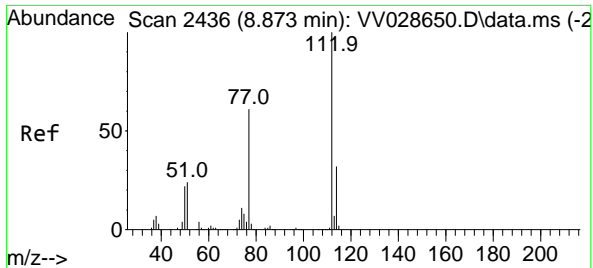
Tgt Ion: 43 Resp: 8221
 Ion Ratio Lower Upper
 43 100
 74 15.2 14.9 22.3



#25
 Chloroform
 Concen: 2.994 ug/L
 RT: 4.371 min Scan# 1036
 Delta R.T. 0.013 min
 Lab File: VV028675.D
 Acq: 21 Oct 2022 20:44

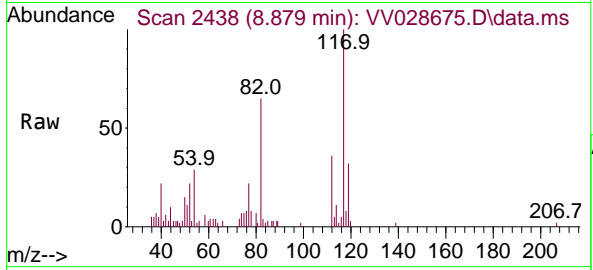
Tgt Ion: 83 Resp: 79461
 Ion Ratio Lower Upper
 83 100
 85 64.6 44.1 81.9





#51
 Chlorobenzene
 Concen: 0.127 ug/L
 RT: 8.879 min Scan# 24
 Delta R.T. 0.006 min
 Lab File: VV028675.D
 Acq: 21 Oct 2022 20:44

Instrument :
 MSVOA_V
 ClientSampleId :
 BHA54



Tgt Ion:112 Resp: 4596

| Ion | Ratio | Lower | Upper |
|-----|-------|-------|-------|
| 112 | 100 | | |
| 114 | 31.6 | 22.0 | 41.0 |
| 77 | 61.8 | 50.0 | 75.0 |

