

Data Path : Z:\voasrv\HPCHEM1\MSVOA_V\Data\VV012022\
 Data File : VV024411.D
 Acq On : 20 Jan 2022 12:45
 Operator : SY/MD
 Sample : N1191-01 10X
 Misc : 5.0mL/MSVOA_V/WATER
 ALS Vial : 4 Sample Multiplier: 1

Instrument :
 MSVOA_V
 ClientSampleId :
 GBCM0

Integration Parameters: LSCINT.P

Integrator: RTE
 Smoothing : OFF
 Sampling : 1
 Start Thrs : 0.2
 Stop Thrs : 0

Filtering: 5
 Min Area: 0 % of largest Peak
 Max Peaks: 100
 Peak Location: TOP

If leading or trailing edge < 100 prefer < Baseline drop else tangent >
 Peak separation: 5

Method : Z:\voasrv\HPCHEM1\MSVOA_V\Method\SFAMVLM123121WMA.M
 Title : VOC Analysis

Signal : TIC: VV024411.D\data.ms

peak #	R.T. min	first scan	max scan	last scan	PK TY	peak height	corr. area	corr. % max.	% of total
1	1.307	76	83	100	rVB	132484	138534	16.76%	2.019%
2	1.568	157	164	176	rBV	103903	115674	14.00%	1.686%
3	2.105	321	331	349	rBV	236734	342807	41.48%	4.997%
4	2.294	384	390	391	rBV	439	473	0.06%	0.007%
5	2.349	402	407	412	rBV3	322	485	0.06%	0.007%
6	2.503	447	455	467	rVB2	9245	15103	1.83%	0.220%
7	2.548	467	469	471	rBV	285	198	0.02%	0.003%
8	2.606	482	487	489	rBV	670	590	0.07%	0.009%
9	2.671	504	507	510	rVB2	358	256	0.03%	0.004%
10	2.693	511	514	518	rVB	259	236	0.03%	0.003%
11	2.937	588	590	592	rBV2	676	443	0.05%	0.006%
12	2.998	605	609	615	rBB	286	290	0.04%	0.004%
13	3.027	616	618	621	rBB	283	158	0.02%	0.002%
14	3.056	622	627	630	rBV2	300	268	0.03%	0.004%
15	3.169	659	662	664	rBV2	376	254	0.03%	0.004%
16	3.236	680	683	688	rBB	264	194	0.02%	0.003%
17	3.767	846	848	853	rBB2	265	212	0.03%	0.003%
18	3.879	873	883	920	rBV	46816	144193	17.45%	2.102%
19	4.130	959	961	963	rBV	350	176	0.02%	0.003%
20	4.188	977	979	983	rBV	287	184	0.02%	0.003%
21	4.339	1010	1026	1048	rBV	140859	347112	42.00%	5.060%
22	4.461	1062	1064	1069	rVB3	399	243	0.03%	0.004%
23	4.558	1092	1094	1098	rBB2	400	293	0.04%	0.004%
24	4.596	1104	1106	1109	rBV	297	191	0.02%	0.003%
25	4.632	1114	1117	1121	rVB2	251	213	0.03%	0.003%
26	4.812	1170	1173	1177	rVB	192	175	0.02%	0.003%
27	4.857	1183	1187	1189	rVV2	255	234	0.03%	0.003%
28	4.941	1209	1213	1217	rBB2	261	257	0.03%	0.004%
29	4.966	1218	1221	1226	rBB2	258	255	0.03%	0.004%
30	5.040	1227	1244	1269	rBV2	318625	826509	100.00%	12.047%
31	5.404	1352	1357	1360	rBV3	422	341	0.04%	0.005%
32	5.497	1383	1386	1388	rVB2	359	182	0.02%	0.003%
33	5.609	1409	1421	1447	rBV	237708	477956	57.83%	6.967%
34	5.902	1501	1512	1526	rBV3	15217	30703	3.71%	0.448%
35	5.976	1533	1535	1538	rVB2	325	173	0.02%	0.003%
36	5.995	1538	1541	1543	rBV	399	240	0.03%	0.003%

Data Path : Z:\voasrv\HPCHEM1\MSVOA_V\Data\VV012022\
 Data File : VV024411.D
 Acq On : 20 Jan 2022 12:45
 Operator : SY/MD
 Sample : N1191-01 10X
 Misc : 5.0mL/MSVOA_V/WATER
 ALS Vial : 4 Sample Multiplier: 1

Instrument :
 MSVOA_V
 ClientSampleId :
 GBCM0

Integration Parameters: LSCINT.P

Integrator: RTE
 Smoothing : OFF
 Sampling : 1
 Start Thrs : 0.2
 Stop Thrs : 0

Filtering: 5
 Min Area: 0 % of largest Peak
 Max Peaks: 100
 Peak Location: TOP

If leading or trailing edge < 100 prefer < Baseline drop else tangent >
 Peak separation: 5

Method : Z:\voasrv\HPCHEM1\MSVOA_V\Method\SFAMVLM123121WMA.M
 Title : VOC Analysis

37	6.063	1547	1562	1590	rBV	174129	360444	43.61%	5.254%
38	6.204	1601	1606	1609	rBV3	950	941	0.11%	0.014%
39	6.240	1614	1617	1619	rBV3	433	301	0.04%	0.004%
40	6.368	1655	1657	1667	rVB5	651	703	0.09%	0.010%
41	6.458	1676	1685	1711	rBV	60088	114789	13.89%	1.673%
42	6.683	1752	1755	1758	rVB2	473	299	0.04%	0.004%
43	6.699	1758	1760	1762	rBV	329	203	0.02%	0.003%
44	6.738	1769	1772	1774	rVB2	347	161	0.02%	0.002%
45	6.760	1774	1779	1782	rBV3	432	419	0.05%	0.006%
46	6.831	1797	1801	1803	rBV2	286	217	0.03%	0.003%
47	6.860	1808	1810	1812	rBV	275	175	0.02%	0.003%
48	6.982	1837	1848	1870	rVV2	106173	192450	23.28%	2.805%
49	7.185	1900	1911	1922	rBV	13056	23199	2.81%	0.338%
50	7.310	1938	1950	1969	rBV	402399	696732	84.30%	10.156%
51	7.616	2034	2045	2072	rBV	75468	131865	15.95%	1.922%
52	7.731	2077	2081	2085	rBV2	418	366	0.04%	0.005%
53	7.857	2117	2120	2121	rBV2	241	158	0.02%	0.002%
54	7.921	2132	2140	2141	rBV2	3424	3158	0.38%	0.046%
55	8.034	2168	2175	2182	rVV4	8276	12156	1.47%	0.177%
56	8.088	2182	2192	2214	rVV	158736	329498	39.87%	4.803%
57	8.188	2216	2223	2247	rVB	119454	196336	23.75%	2.862%
58	8.307	2253	2260	2273	rBV2	6400	11164	1.35%	0.163%
59	8.387	2283	2285	2288	rVB2	482	183	0.02%	0.003%
60	8.448	2302	2304	2309	rVB3	397	292	0.04%	0.004%
61	8.561	2336	2339	2342	rVV2	280	207	0.03%	0.003%
62	8.677	2364	2375	2393	rBV	80393	128584	15.56%	1.874%
63	8.850	2417	2429	2449	rBV	356363	590507	71.45%	8.607%
64	9.082	2497	2501	2505	rBV2	235	237	0.03%	0.003%
65	9.153	2515	2523	2530	rBV4	878	1417	0.17%	0.021%
66	9.227	2542	2546	2549	rBV	191	202	0.02%	0.003%
67	9.246	2549	2552	2556	rVB	343	294	0.04%	0.004%
68	9.419	2603	2606	2609	rVB2	266	244	0.03%	0.004%
69	9.439	2609	2612	2614	rBV	269	207	0.03%	0.003%
70	9.554	2641	2648	2657	rVB5	1291	2082	0.25%	0.030%
71	9.712	2693	2697	2700	rVB	311	206	0.02%	0.003%
72	9.982	2779	2781	2784	rVB2	330	185	0.02%	0.003%
73	10.098	2812	2817	2818	rBV2	283	226	0.03%	0.003%
74	10.214	2841	2853	2872	rBV	231425	359526	43.50%	5.240%
75	10.349	2891	2895	2896	rBV	388	178	0.02%	0.003%
76	10.365	2896	2900	2901	rVV	312	227	0.03%	0.003%

Data Path : Z:\voasrv\HPCHEM1\MSVOA_V\Data\VW012022\
 Data File : VW024411.D
 Acq On : 20 Jan 2022 12:45
 Operator : SY/MD
 Sample : N1191-01 10X
 Misc : 5.0mL/MSVOA_V/WATER
 ALS Vial : 4 Sample Multiplier: 1

Instrument :
 MSVOA_V
 ClientSampleId :
 GBCM0

Integration Parameters: LSCINT.P
 Integrator: RTE
 Smoothing : OFF
 Sampling : 1
 Start Thrs : 0.2
 Stop Thrs : 0
 Filtering: 5
 Min Area: 0 % of largest Peak
 Max Peaks: 100
 Peak Location: TOP

If leading or trailing edge < 100 prefer < Baseline drop else tangent >
 Peak separation: 5

Method : Z:\voasrv\HPCHEM1\MSVOA_V\Method\SFAMVLM123121WMA.M
 Title : VOC Analysis

77	10.448	2923	2926	2930	rBV3	263	278	0.03%	0.004%
78	10.915	3066	3071	3081	rVB6	1862	2528	0.31%	0.037%
79	11.011	3098	3101	3103	rBV2	204	160	0.02%	0.002%
80	11.143	3139	3142	3143	rBV	639	364	0.04%	0.005%
81	11.185	3152	3155	3157	rBV	404	186	0.02%	0.003%
82	11.246	3164	3174	3196	rBV	370303	577821	69.91%	8.422%
83	11.490	3248	3250	3257	rVB2	304	249	0.03%	0.004%
84	11.622	3279	3291	3311	rVV	431635	666183	80.60%	9.710%
85	11.789	3340	3343	3348	rBV4	487	530	0.06%	0.008%
86	11.847	3357	3361	3366	rVB3	535	383	0.05%	0.006%
87	11.889	3371	3374	3375	rBV	360	159	0.02%	0.002%
88	11.950	3390	3393	3394	rBV	323	167	0.02%	0.002%
89	12.098	3435	3439	3441	rBV2	481	329	0.04%	0.005%
90	12.349	3511	3517	3518	rBV2	667	464	0.06%	0.007%
91	12.603	3593	3596	3599	rVB2	315	191	0.02%	0.003%
92	12.683	3618	3621	3622	rBV2	275	165	0.02%	0.002%
93	13.149	3762	3766	3769	rBV2	271	190	0.02%	0.003%
94	13.268	3800	3803	3806	rVB	481	332	0.04%	0.005%
95	13.516	3870	3880	3885	rBV2	1249	2136	0.26%	0.031%
96	13.728	3941	3946	3947	rBV	316	217	0.03%	0.003%
97	13.741	3947	3950	3951	rBV2	520	250	0.03%	0.004%
98	14.255	4107	4110	4113	rBV2	273	186	0.02%	0.003%
99	14.371	4143	4146	4148	rBV	343	222	0.03%	0.003%
100	14.538	4196	4198	4204	rBV2	398	302	0.04%	0.004%

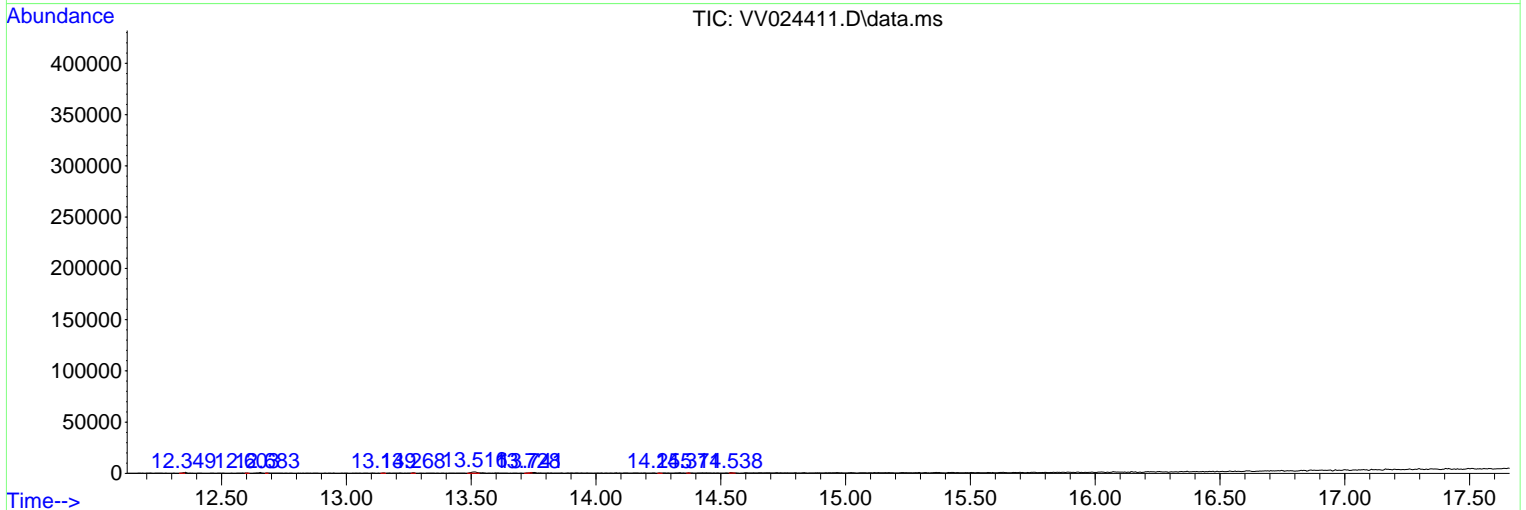
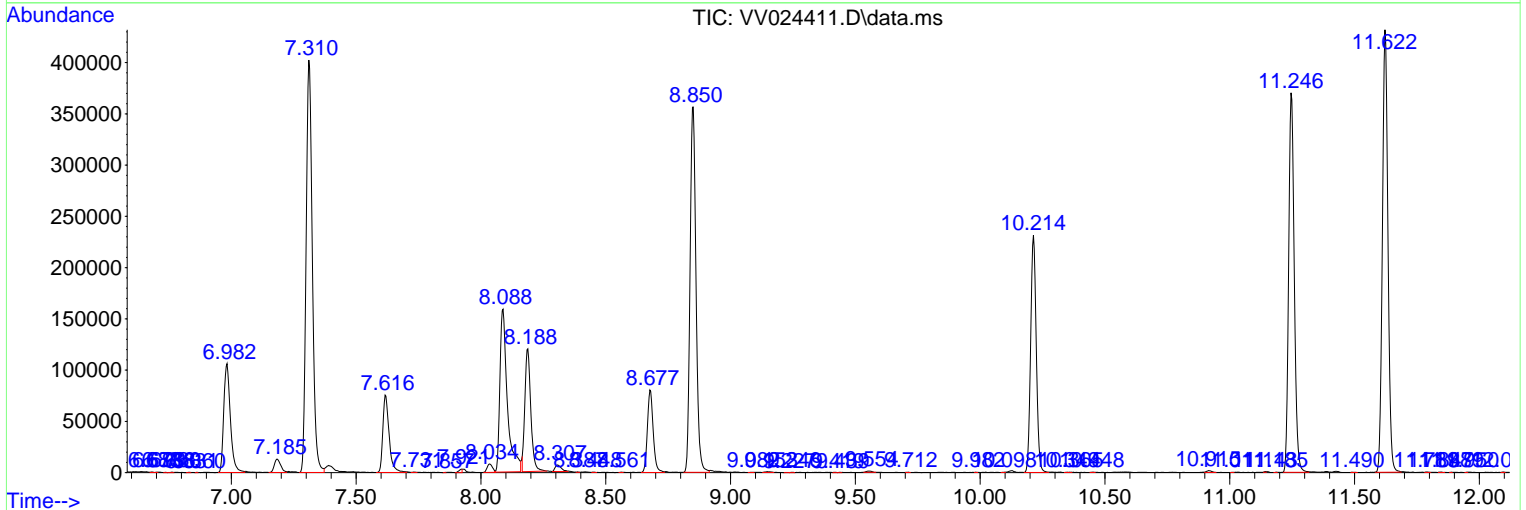
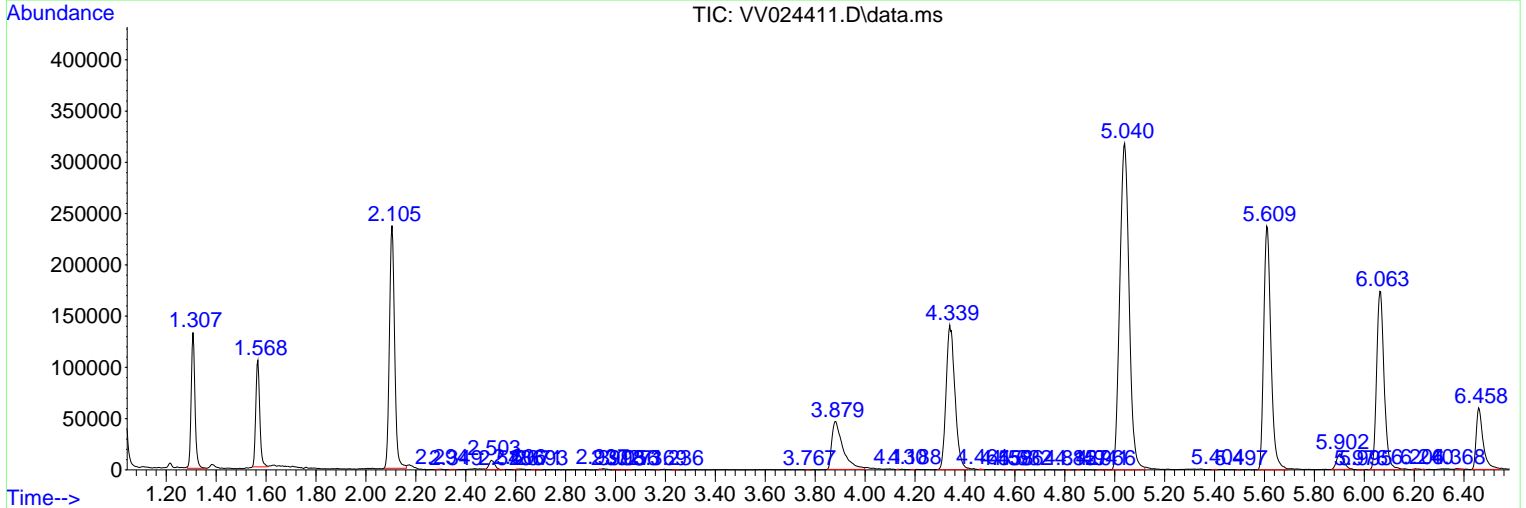
Sum of corrected areas: 6860535

Data Path : Z:\voasrv\HPCHEM1\MSVOA_V\Data\VV012022\
 Data File : VV024411.D
 Acq On : 20 Jan 2022 12:45
 Operator : SY/MD
 Sample : N1191-01 10X
 Misc : 5.0mL/MSVOA_V/WATER
 ALS Vial : 4 Sample Multiplier: 1

Instrument :
 MSVOA_V
 ClientSampleId :
 GBCM0

Quant Method : Z:\voasrv\HPCHEM1\MSVOA_V\Method\SFAMVLM123121WMA.M
 Quant Title : VOC Analysis

TIC Library : C:\Database\NIST20.L
 TIC Integration Parameters: LSCINT.P



Data Path : Z:\voasrv\HPCHEM1\MSVOA_V\Data\VV012022\
 Data File : VV024411.D
 Acq On : 20 Jan 2022 12:45
 Operator : SY/MD
 Sample : N1191-01 10X
 Misc : 5.0mL/MSVOA_V/WATER
 ALS Vial : 4 Sample Multiplier: 1

Instrument :
 MSVOA_V
 ClientSampleId :
 GBCM0

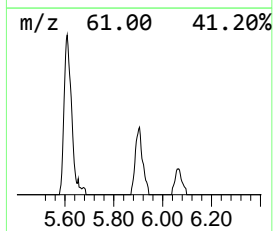
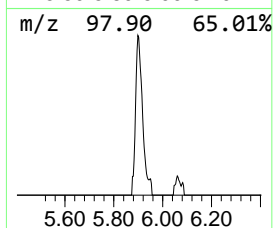
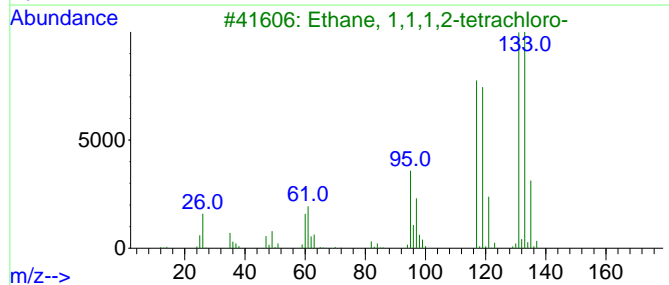
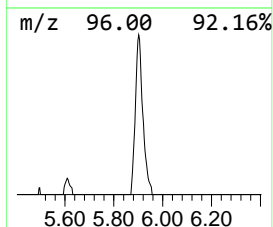
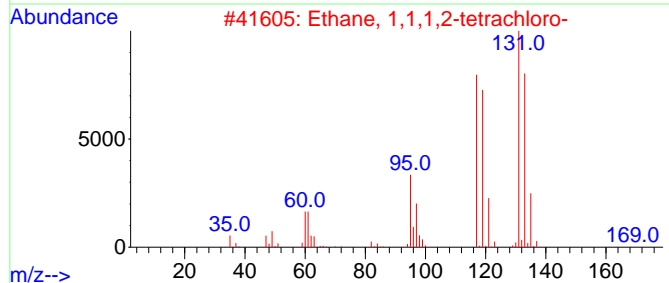
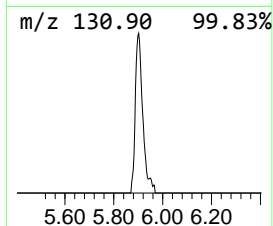
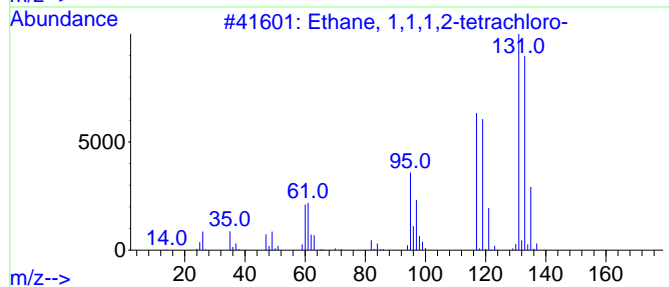
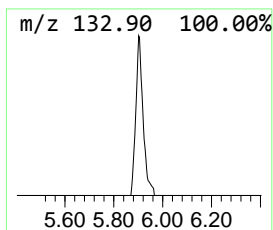
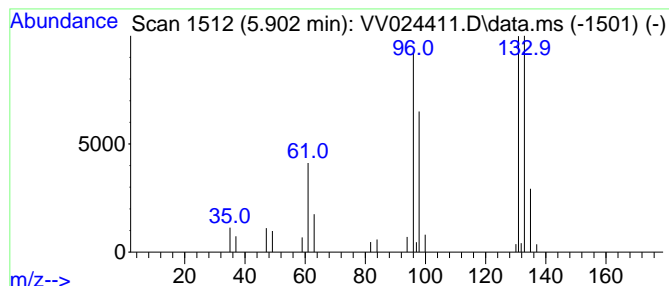
Quant Method : Z:\voasrv\HPCHEM1\MSVOA_V\Method\SFAMVLM123121WMA.M
 Quant Title : VOC Analysis

TIC Library : C:\Database\NIST20.L
 TIC Integration Parameters: LSCINT.P

 Peak Number 1 unknown-01 Concentration Rank 5

R.T.	EstConc	Area	Relative to ISTD	R.T.
5.902	3.21 ug/L	30703	1,4-Difluorobenzene	5.613

Hit#	of	Tentative ID	MW	MolForm	CAS#	Qual
1	5	Ethane, 1,1,1,2-tetrachloro-	166	C2H2Cl4	000630-20-6	38
2		Ethane, 1,1,1,2-tetrachloro-	166	C2H2Cl4	000630-20-6	37
3		Ethane, 1,1,1,2-tetrachloro-	166	C2H2Cl4	000630-20-6	37
4		4-Chloro-3-fluoropyridine	131	C5H3ClFN	002546-56-7	32
5		Ethylene, 1,2-dichloro-, (Z)-	96	C2H2Cl2	000156-59-2	27



Data Path : Z:\voasrv\HPCHEM1\MSVOA_V\Data\VV012022\
 Data File : VV024411.D
 Acq On : 20 Jan 2022 12:45
 Operator : SY/MD
 Sample : N1191-01 10X
 Misc : 5.0mL/MSVOA_V/WATER
 ALS Vial : 4 Sample Multiplier: 1

Instrument :
 MSVOA_V
 ClientSampleId :
 GBCM0

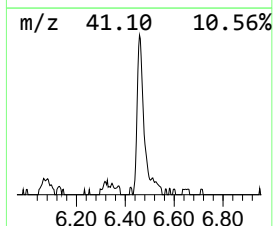
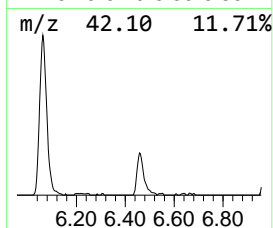
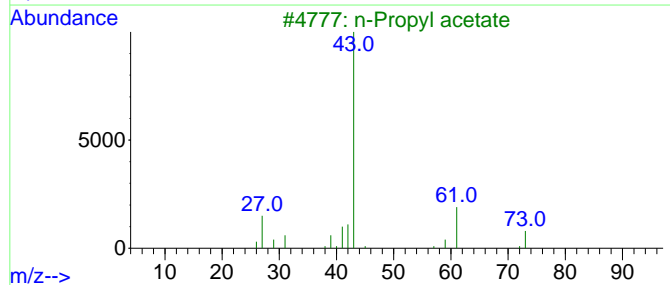
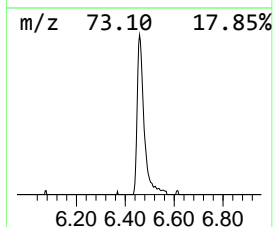
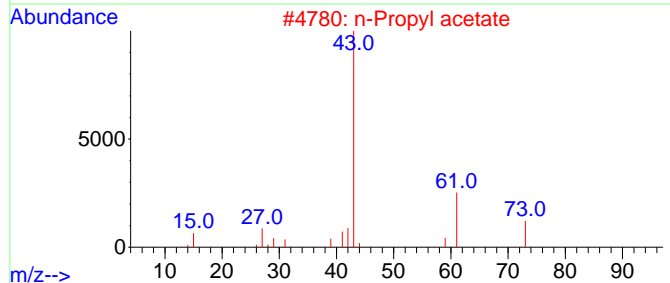
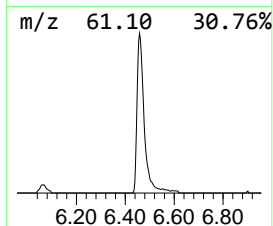
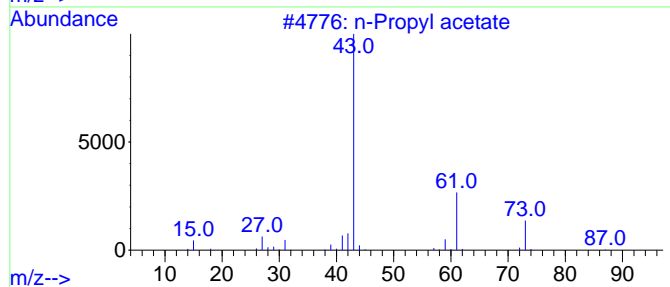
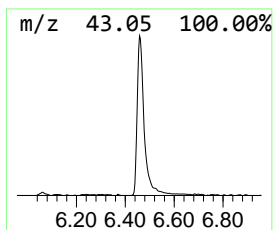
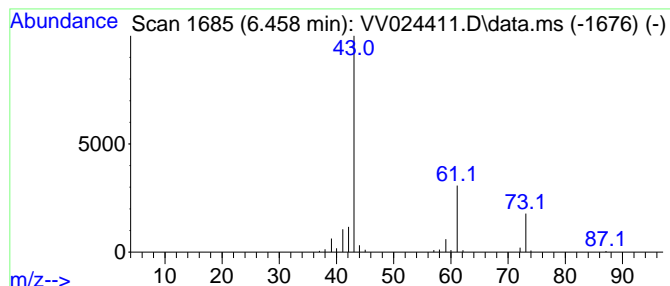
Quant Method : Z:\voasrv\HPCHEM1\MSVOA_V\Method\SFAMVLM123121WMA.M
 Quant Title : VOC Analysis

TIC Library : C:\Database\NIST20.L
 TIC Integration Parameters: LSCINT.P

 Peak Number 2 n-Propyl acetate Concentration Rank 3

R.T.	EstConc	Area	Relative to ISTD	R.T.
6.458	12.01 ug/L	114789	1,4-Difluorobenzene	5.613

Hit#	of 5	Tentative ID	MW	MolForm	CAS#	Qual
1		n-Propyl acetate	102	C5H10O2	000109-60-4	78
2		n-Propyl acetate	102	C5H10O2	000109-60-4	64
3		n-Propyl acetate	102	C5H10O2	000109-60-4	64
4		n-Propyl acetate	102	C5H10O2	000109-60-4	56
5		n-Propyl acetate	102	C5H10O2	000109-60-4	40



Data Path : Z:\voasrv\HPCHEM1\MSVOA_V\Data\VV012022\
 Data File : VV024411.D
 Acq On : 20 Jan 2022 12:45
 Operator : SY/MD
 Sample : N1191-01 10X
 Misc : 5.0mL/MSVOA_V/WATER
 ALS Vial : 4 Sample Multiplier: 1

Instrument :
 MSVOA_V
 ClientSampleId :
 GBCM0

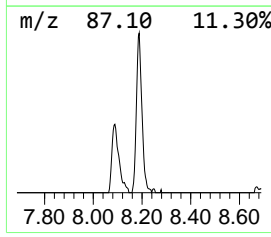
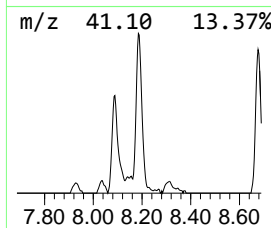
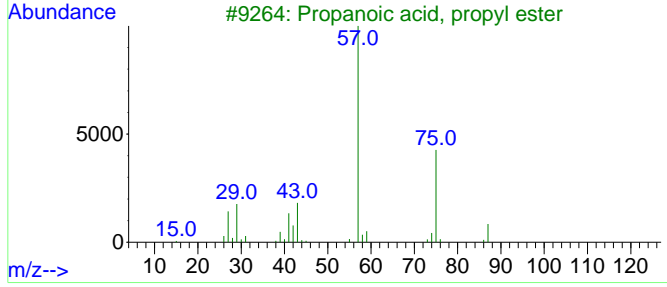
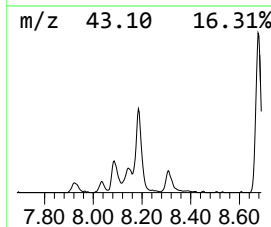
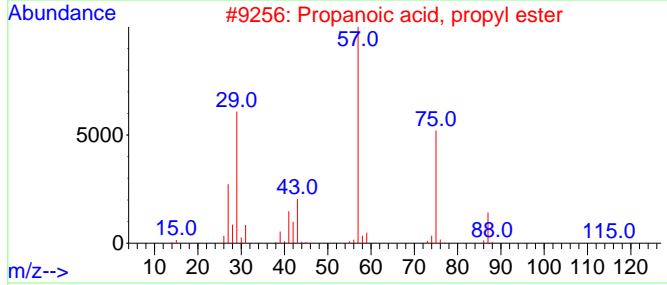
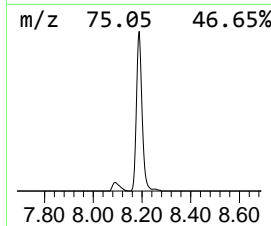
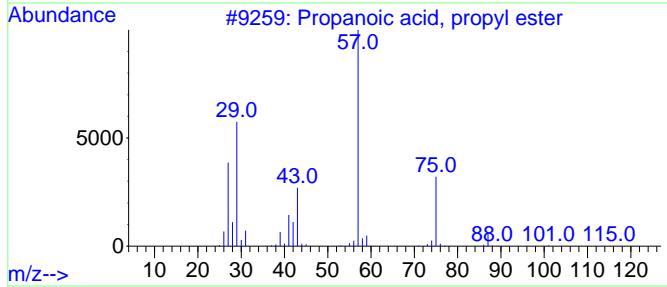
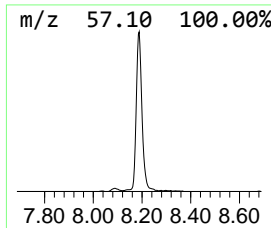
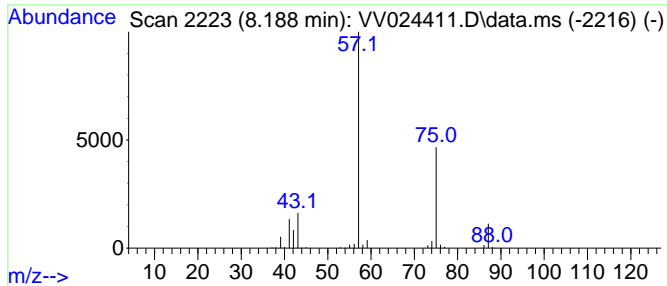
Quant Method : Z:\voasrv\HPCHEM1\MSVOA_V\Method\SFAMVLM123121WMA.M
 Quant Title : VOC Analysis

TIC Library : C:\Database\NIST20.L
 TIC Integration Parameters: LSCINT.P

 Peak Number 4 Propanoic acid, propyl ester Concentration Rank 2

R.T.	EstConc	Area	Relative to ISTD	R.T.
8.188	16.62 ug/L	196336	Chlorobenzene-d5	8.850

Hit#	of	5	Tentative ID	MW	MolForm	CAS#	Qual
1			Propanoic acid, propyl ester	116	C6H12O2	000106-36-5	83
2			Propanoic acid, propyl ester	116	C6H12O2	000106-36-5	83
3			Propanoic acid, propyl ester	116	C6H12O2	000106-36-5	78
4			Propanoic acid, propyl ester	116	C6H12O2	000106-36-5	64
5			Propanoic acid, propyl ester	116	C6H12O2	000106-36-5	40



Data Path : Z:\voasrv\HPCHEM1\MSVOA_V\Data\VV012022\
 Data File : VV024411.D
 Acq On : 20 Jan 2022 12:45
 Operator : SY/MD
 Sample : N1191-01 10X
 Misc : 5.0mL/MSVOA_V/WATER
 ALS Vial : 4 Sample Multiplier: 1

Instrument :
 MSVOA_V
 ClientSampleId :
 GBCM0

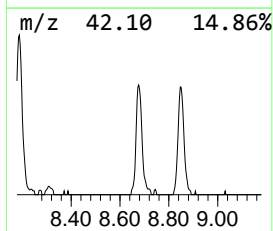
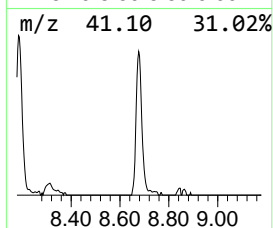
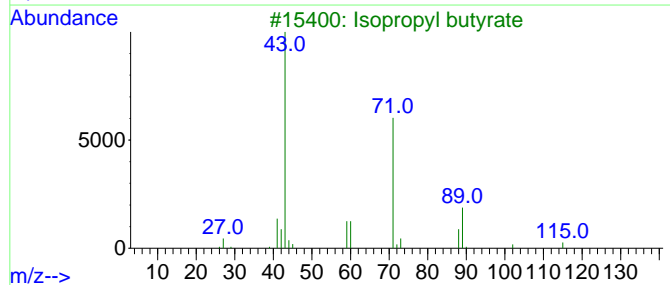
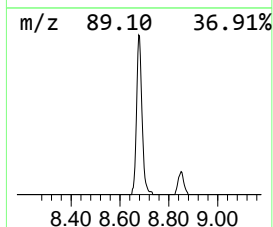
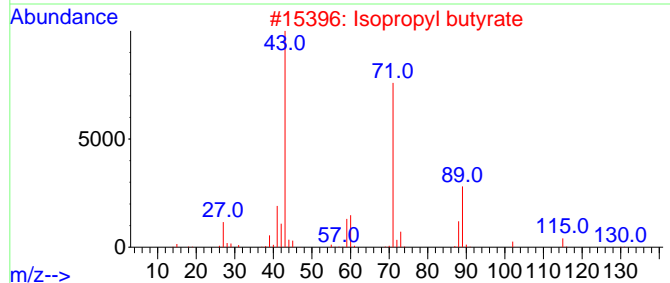
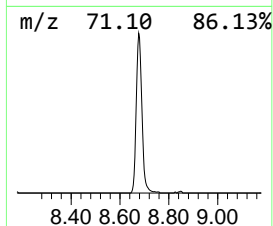
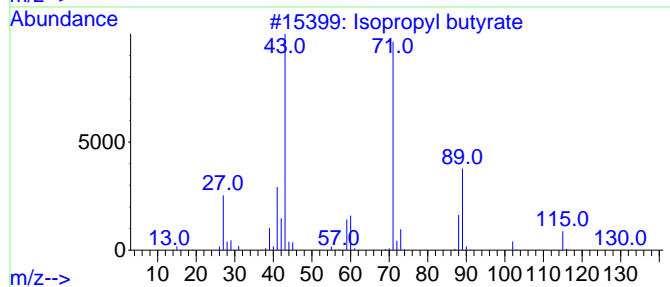
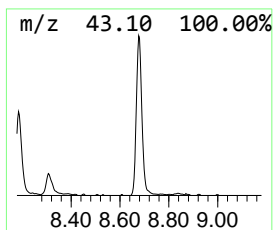
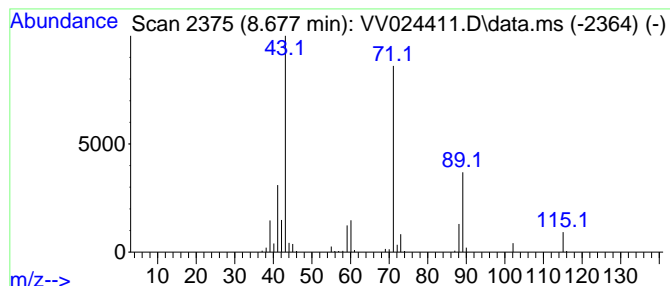
Quant Method : Z:\voasrv\HPCHEM1\MSVOA_V\Method\SFAMVLM123121WMA.M
 Quant Title : VOC Analysis

TIC Library : C:\Database\NIST20.L
 TIC Integration Parameters: LSCINT.P

 Peak Number 5 Isopropyl butyrate Concentration Rank 4

R.T.	EstConc	Area	Relative to ISTD	R.T.
8.677	10.89 ug/L	128584	Chlorobenzene-d5	8.850

Hit#	of	5	Tentative ID	MW	MolForm	CAS#	Qual
1			Isopropyl butyrate	130	C7H14O2	000638-11-9	91
2			Isopropyl butyrate	130	C7H14O2	000638-11-9	90
3			Isopropyl butyrate	130	C7H14O2	000638-11-9	72
4			Propanoic acid, 2-methyl-, 1-met...	130	C7H14O2	000617-50-5	72
5			Propanoic acid, 2-methyl-, 1-met...	130	C7H14O2	000617-50-5	72



Data Path : Z:\voasrv\HPCHEM1\MSVOA_V\Data\VV012022\
Data File : VV024411.D
Acq On : 20 Jan 2022 12:45
Operator : SY/MD
Sample : N1191-01 10X
Misc : 5.0mL/MSVOA_V/WATER
ALS Vial : 4 Sample Multiplier: 1

Instrument :
MSVOA_V
ClientSampleId :
GBCM0

Quant Method : Z:\voasrv\HPCHEM1\MSVOA_V\Method\SFAMVLM123121WMA.M
Quant Title : VOC Analysis

TIC Library : C:\Database\NIST20.L
TIC Integration Parameters: LSCINT.P

TIC Top Hit name	RT	EstConc	Units	Response	--Internal Standard--			
					#	RT	Resp	Conc
unknown-01	5.902	3.2	ug/L	30703	1	5.613	477956	50.0
n-Propyl acetate	6.458	12.0	ug/L	114789	1	5.613	477956	50.0
Propanoic acid,...	8.188	16.6	ug/L	196336	2	8.850	590507	50.0
Isopropyl butyrate	8.677	10.9	ug/L	128584	2	8.850	590507	50.0