

Data Path : Z:\voasrv\HPCHEM1\MSVOA\_V\Data\VW061622\  
 Data File : VW026327.D  
 Acq On : 16 Jun 2022 12:35  
 Operator : SY/MD  
 Sample : N3274-21  
 Misc : 25mL/MSVOA\_V/WATER  
 ALS Vial : 9 Sample Multiplier: 1

Instrument :  
 MSVOA\_V  
 ClientSampleId :  
 VHBLK001

Quant Time: Jun 17 05:19:33 2022  
 Quant Method : Z:\voasrv\HPCHEM1\MSVOA\_V\Method\SFAMVTR061522WMA.M  
 Quant Title : TRACE VOA SFAM1.0  
 QLast Update : Fri Jun 17 05:16:46 2022  
 Response via : Initial Calibration

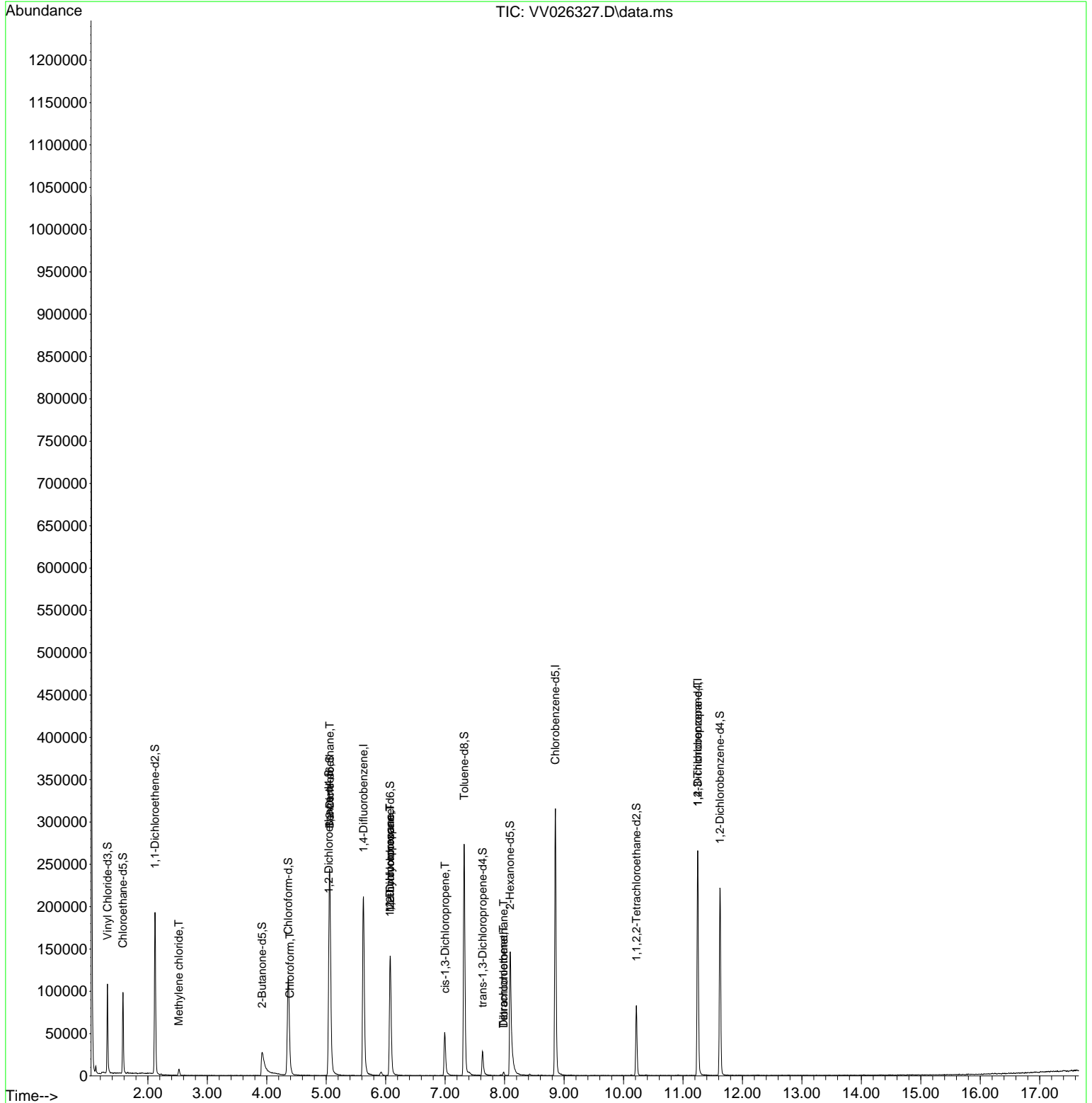
Compound	R.T.	QIon	Response	Conc	Units	Dev(Min)
Internal Standards						
1) 1,4-Difluorobenzene	5.625	114	188510	5.000	ug/L	0.00
28) Chlorobenzene-d5	8.854	117	183835	5.000	ug/L	0.00
58) 1,4-Dichlorobenzene-d4	11.249	152	73053	5.000	ug/L	0.00
System Monitoring Compounds						
4) Vinyl Chloride-d3	1.320	65	72129	4.405	ug/L	0.00
Spiked Amount	5.000	Range 40 - 130	Recovery	=	88.200%	
7) Chloroethane-d5	1.581	69	61370	4.767	ug/L	0.00
Spiked Amount	5.000	Range 65 - 130	Recovery	=	95.400%	
11) 1,1-Dichloroethene-d2	2.121	63	99687	3.545	ug/L	0.00
Spiked Amount	5.000	Range 60 - 125	Recovery	=	71.000%	
20) 2-Butanone-d5	3.921	46	60703	37.995	ug/L	0.00
Spiked Amount	50.000	Range 40 - 130	Recovery	=	76.000%	
24) Chloroform-d	4.362	84	123325	5.139	ug/L	0.00
Spiked Amount	5.000	Range 70 - 125	Recovery	=	102.800%	
26) 1,2-Dichloroethane-d4	5.043	65	48403	4.767	ug/L	0.00
Spiked Amount	5.000	Range 70 - 130	Recovery	=	95.400%	
32) Benzene-d6	5.060	84	234753	4.776	ug/L	0.00
Spiked Amount	5.000	Range 70 - 125	Recovery	=	95.600%	
36) 1,2-Dichloropropane-d6	6.076	67	71588	4.991	ug/L	0.00
Spiked Amount	5.000	Range 60 - 140	Recovery	=	99.800%	
41) Toluene-d8	7.320	98	190322	4.247	ug/L	0.00
Spiked Amount	5.000	Range 70 - 130	Recovery	=	85.000%	
43) trans-1,3-Dichloroprop...	7.629	79	18759	4.033	ug/L	0.00
Spiked Amount	5.000	Range 55 - 130	Recovery	=	80.600%	
46) 2-Hexanone-d5	8.092	63	56406	40.145	ug/L	0.00
Spiked Amount	50.000	Range 45 - 130	Recovery	=	80.280%	
56) 1,1,2,2-Tetrachloroeth...	10.217	84	40830	4.621	ug/L	0.00
Spiked Amount	5.000	Range 65 - 120	Recovery	=	92.400%	
66) 1,2-Dichlorobenzene-d4	11.622	152	60032	5.335	ug/L	0.00
Spiked Amount	5.000	Range 80 - 120	Recovery	=	106.600%	
Target Compounds						
16) Methylene chloride	2.519	84	3316	0.218	ug/L	86
25) Chloroform	4.388	83	2723	0.114	ug/L	98
27) 1,2-Dichloroethane	5.060	62	1223	0.112	ug/L #	71
35) Methylcyclohexane	6.076	83	16758	0.941	ug/L #	19
37) 1,2-Dichloropropane	6.072	63	7695	0.624	ug/L #	88
39) cis-1,3-Dichloropropene	6.998	75	1290	0.092	ug/L #	67
47) Tetrachloroethene	7.982	164	823	0.086	ug/L	81
49) Dibromochloromethane	7.985	129	975	0.109	ug/L #	9
61) 1,2,3-Trichloropropane	11.249	75	8446	1.782	ug/L #	63

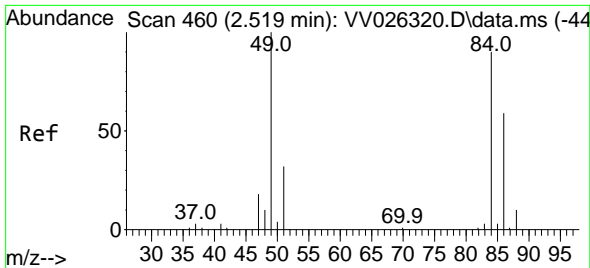
(#) = qualifier out of range (m) = manual integration (+) = signals summed

Data Path : Z:\voasrv\HPCHEM1\MSVOA\_V\Data\VV061622\  
 Data File : VV026327.D  
 Acq On : 16 Jun 2022 12:35  
 Operator : SY/MD  
 Sample : N3274-21  
 Misc : 25mL/MSVOA\_V/WATER  
 ALS Vial : 9 Sample Multiplier: 1

Instrument :  
 MSVOA\_V  
 ClientSampleId :  
 VHBLK001

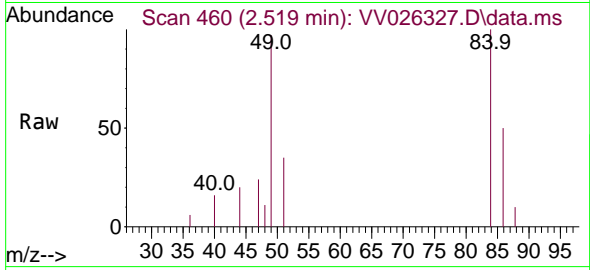
Quant Time: Jun 17 05:19:33 2022  
 Quant Method : Z:\voasrv\HPCHEM1\MSVOA\_V\Method\SFAMVTR061522WMA.M  
 Quant Title : TRACE VOA SFAM1.0  
 QLast Update : Fri Jun 17 05:16:46 2022  
 Response via : Initial Calibration



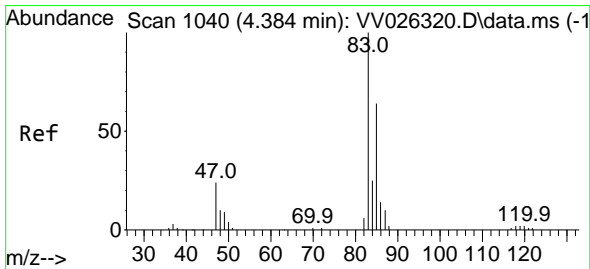
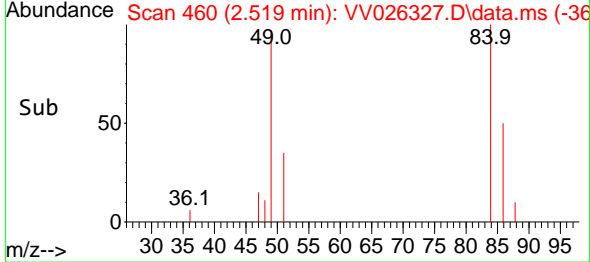
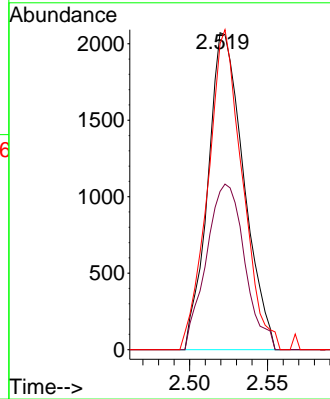


#16  
 Methylene chloride  
 Concen: 0.218 ug/L  
 RT: 2.519 min Scan# 410  
 Delta R.T. 0.000 min  
 Lab File: VV026327.D  
 Acq: 16 Jun 2022 12:35

Instrument : MSVOA\_V  
 ClientSampleId : VHBLK001

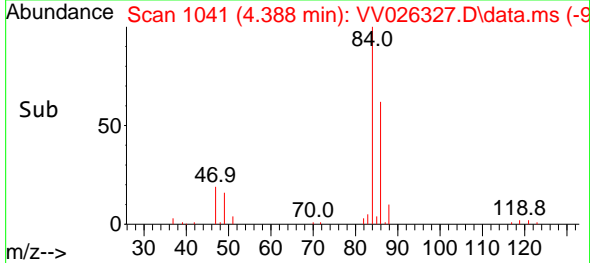
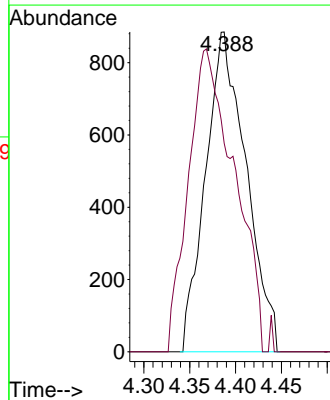
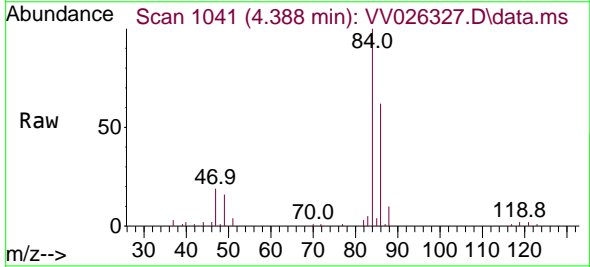


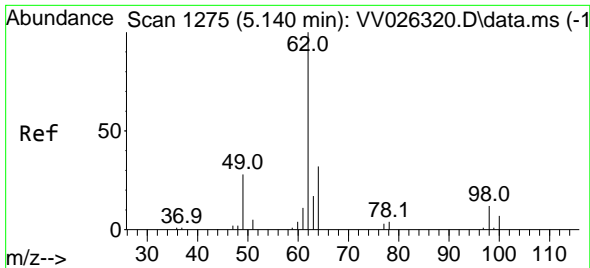
Tgt Ion	Resp	Lower	Upper
84	100		
86	49.9	44.0	81.8
49	96.5	77.3	143.7



#25  
 Chloroform  
 Concen: 0.114 ug/L  
 RT: 4.388 min Scan# 1041  
 Delta R.T. 0.003 min  
 Lab File: VV026327.D  
 Acq: 16 Jun 2022 12:35

Tgt Ion	Resp	Lower	Upper
83	100		
85	65.2	46.5	86.3

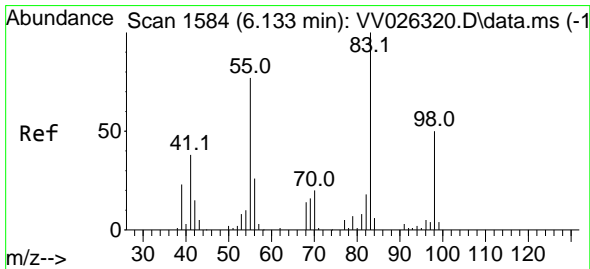
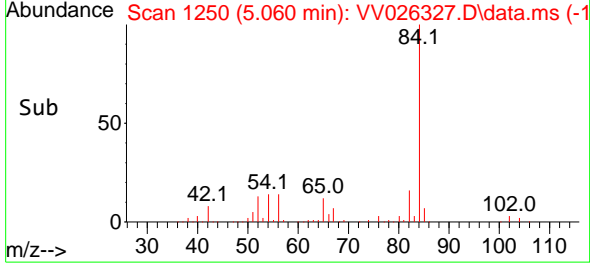
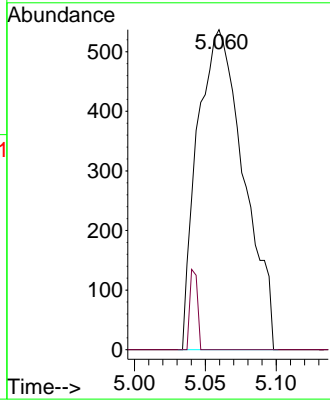
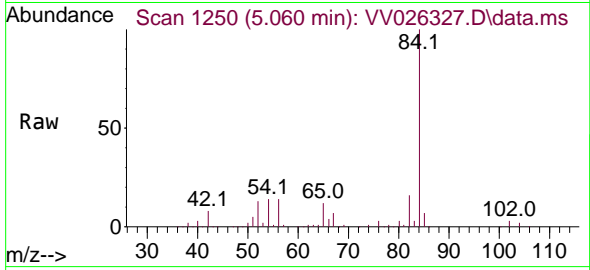




#27  
 1,2-Dichloroethane  
 Concen: 0.112 ug/L  
 RT: 5.060 min Scan# 11  
 Delta R.T. -0.080 min  
 Lab File: VV026327.D  
 Acq: 16 Jun 2022 12:35

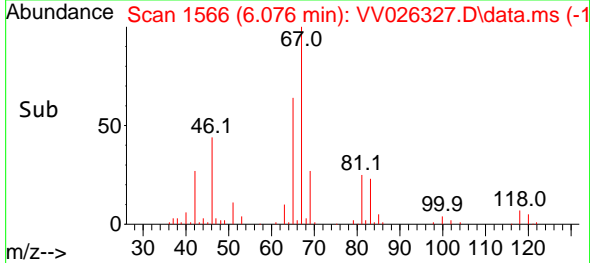
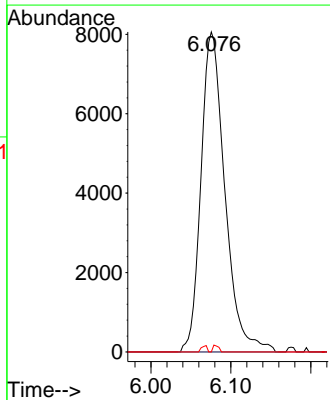
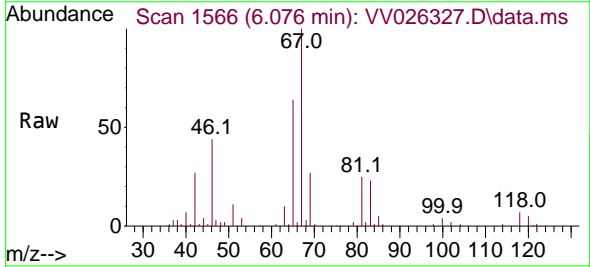
Instrument : MSVOA\_V  
 ClientSampleId : VHBLK001

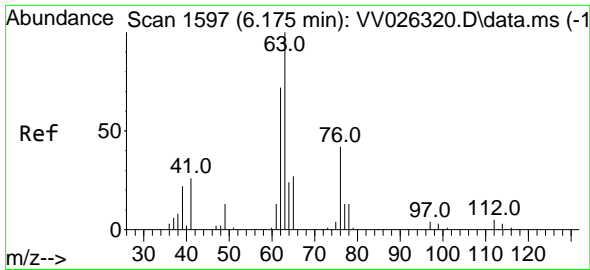
Tgt Ion: 62 Resp: 1223  
 Ion Ratio Lower Upper  
 62 100  
 98 0.0 8.6 13.0#



#35  
 Methylcyclohexane  
 Concen: 0.941 ug/L  
 RT: 6.076 min Scan# 1566  
 Delta R.T. -0.058 min  
 Lab File: VV026327.D  
 Acq: 16 Jun 2022 12:35

Tgt Ion: 83 Resp: 16758  
 Ion Ratio Lower Upper  
 83 100  
 55 0.0 59.3 88.9#  
 98 0.5 39.9 59.9#

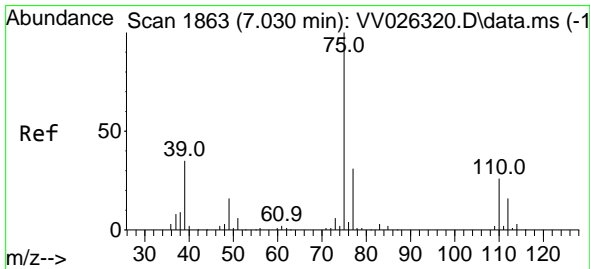
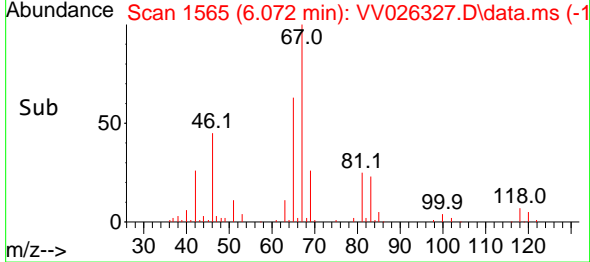
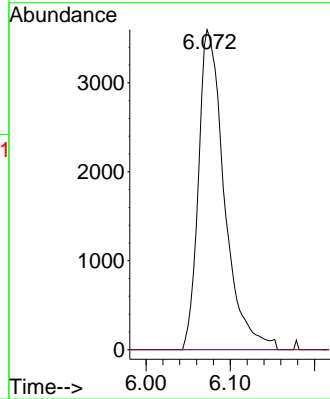
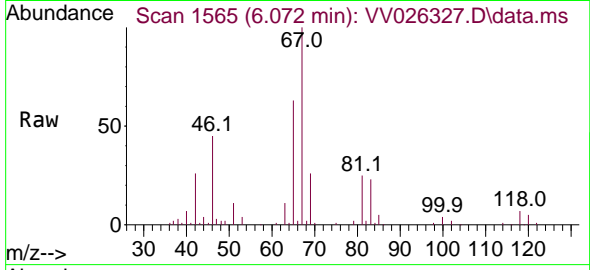




#37  
 1,2-Dichloropropane  
 Concen: 0.624 ug/L  
 RT: 6.072 min Scan# 1111  
 Delta R.T. -0.103 min  
 Lab File: VV026327.D  
 Acq: 16 Jun 2022 12:35

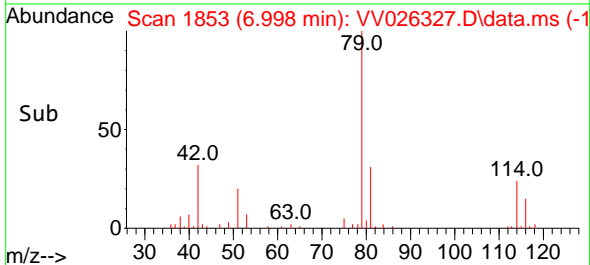
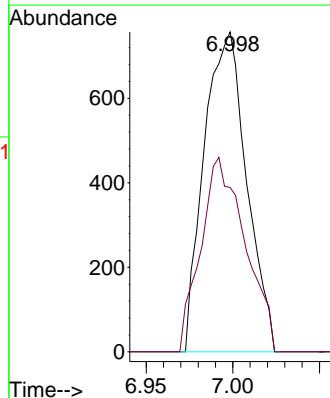
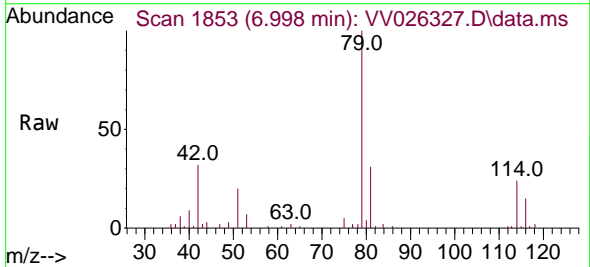
Instrument : MSVOA\_V  
 ClientSampleId : VHBLK001

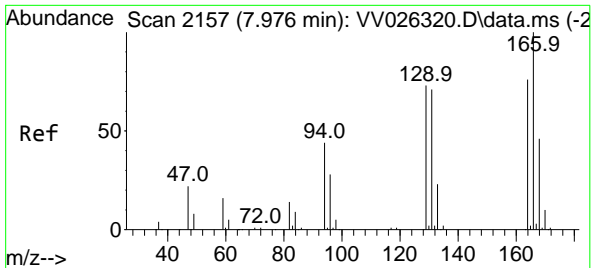
Tgt Ion: 63 Resp: 7695  
 Ion Ratio Lower Upper  
 63 100  
 112 0.0 3.3 4.9#



#39  
 cis-1,3-Dichloropropene  
 Concen: 0.092 ug/L  
 RT: 6.998 min Scan# 1853  
 Delta R.T. -0.032 min  
 Lab File: VV026327.D  
 Acq: 16 Jun 2022 12:35

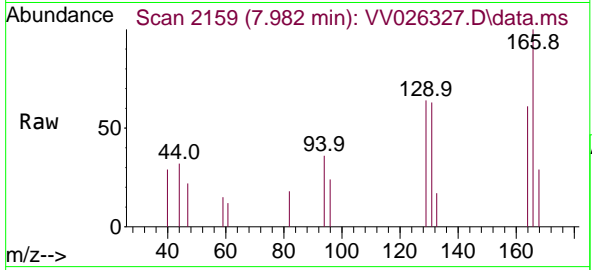
Tgt Ion: 75 Resp: 1290  
 Ion Ratio Lower Upper  
 75 100  
 77 51.4 23.0 42.6#





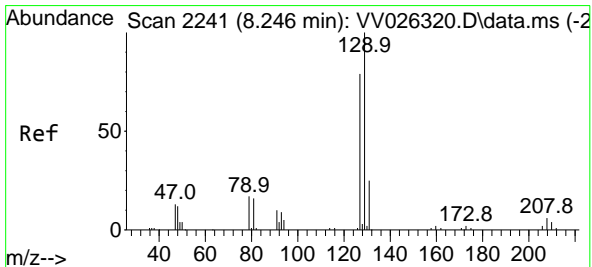
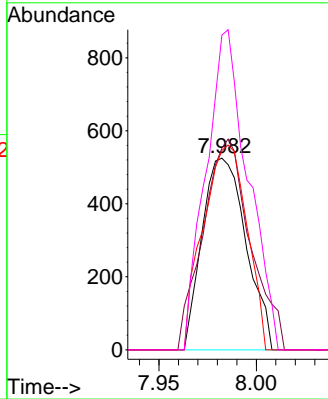
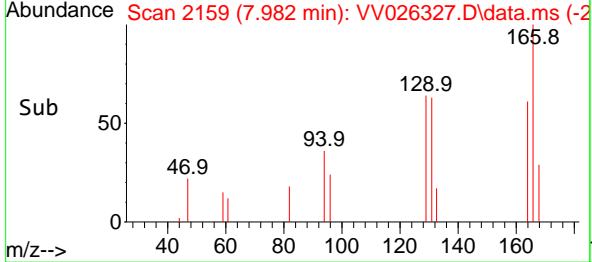
#47  
 Tetrachloroethene  
 Concen: 0.086 ug/L  
 RT: 7.982 min Scan# 2157  
 Delta R.T. 0.007 min  
 Lab File: VV026327.D  
 Acq: 16 Jun 2022 12:35

Instrument : MSVOA\_V  
 ClientSampleId : VHBLK001

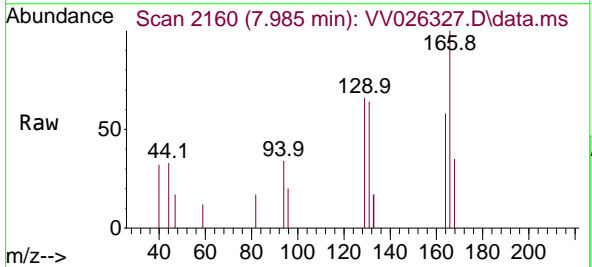


Tgt Ion:164 Resp: 823

Ion	Ratio	Lower	Upper
164	100		
129	105.1	67.5	125.3
131	104.0	63.8	118.4
166	164.2	89.5	166.3

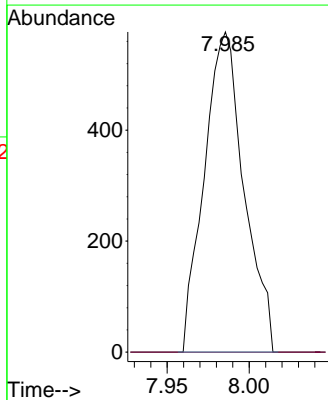
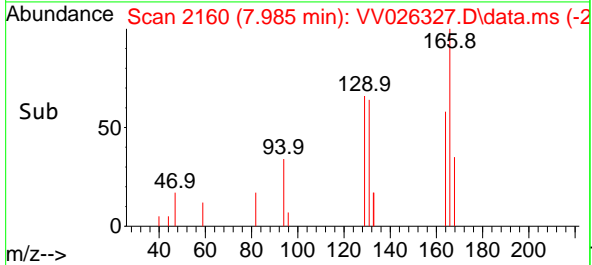


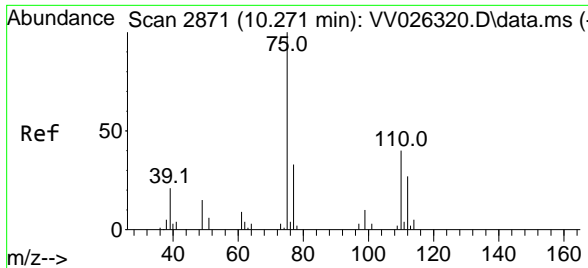
#49  
 Dibromochloromethane  
 Concen: 0.109 ug/L  
 RT: 7.985 min Scan# 2160  
 Delta R.T. -0.260 min  
 Lab File: VV026327.D  
 Acq: 16 Jun 2022 12:35



Tgt Ion:129 Resp: 975

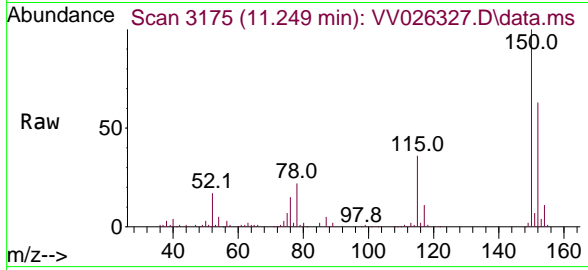
Ion	Ratio	Lower	Upper
129	100		
127	0.0	56.4	104.7#





#61  
 1,2,3-Trichloropropane  
 Concen: 1.782 ug/L  
 RT: 11.249 min Scan# 31  
 Delta R.T. 0.978 min  
 Lab File: VV026327.D  
 Acq: 16 Jun 2022 12:35

Instrument :  
 MSVOA\_V  
 ClientSampleId :  
 VHBLK001



Tgt Ion	Resp	Lower	Upper
75	8446		
75	100		
77	28.7	26.9	40.3
110	1.1	30.7	46.1#

