

Data Path : Z:\voasrv\HPCHEM1\MSVOA_V\Data\VW081722\
 Data File : VW027416.D
 Acq On : 17 Aug 2022 11:54
 Operator : SY/MD
 Sample : N4015-02
 Misc : 25.0mL/MSVOA_V/WATER
 ALS Vial : 5 Sample Multiplier: 1

Instrument :
 MSVOA_V
 ClientSampleId :
 MDL-WATER-QT3-2022-06

Manual Integrations
 APPROVED

Reviewed By :Mahesh Dadoda 08/19/2022
 Supervised By :Semsettin Yesilyurt 08/22/2022

Quant Time: Aug 18 01:46:59 2022
 Quant Method : Z:\voasrv\HPCHEM1\MSVOA_V\Method\SFAMVTR081122WMA.M
 Quant Title : TRACE VOA SFAM1.0
 QLast Update : Thu Aug 18 01:40:54 2022
 Response via : Initial Calibration

Compound	R.T.	QIon	Response	Conc	Units	Dev(Min)
Internal Standards						
1) 1,4-Difluorobenzene	5.616	114	126802	5.000	ug/L	0.00
28) Chlorobenzene-d5	8.850	117	139398	5.000	ug/L	0.00
58) 1,4-Dichlorobenzene-d4	11.249	152	58771	5.000	ug/L	0.00
System Monitoring Compounds						
4) Vinyl Chloride-d3	1.304	65	39497	3.585	ug/L	0.00
Spiked Amount	5.000	Range 40 - 130	Recovery	=	71.800%	
7) Chloroethane-d5	1.564	69	38297	4.787	ug/L	0.00
Spiked Amount	5.000	Range 65 - 130	Recovery	=	95.800%	
11) 1,1-Dichloroethene-d2	2.105	63	67030	3.355	ug/L	0.00
Spiked Amount	5.000	Range 60 - 125	Recovery	=	67.200%	
20) 2-Butanone-d5	3.886	46	89714	48.085	ug/L	0.00
Spiked Amount	50.000	Range 40 - 130	Recovery	=	96.180%	
24) Chloroform-d	4.346	84	98588	4.880	ug/L	0.00
Spiked Amount	5.000	Range 70 - 125	Recovery	=	97.600%	
26) 1,2-Dichloroethane-d4	5.030	65	53546	5.563	ug/L	0.00
Spiked Amount	5.000	Range 70 - 130	Recovery	=	111.200%	
32) Benzene-d6	5.047	84	174951	4.255	ug/L	0.00
Spiked Amount	5.000	Range 70 - 125	Recovery	=	85.000%	
36) 1,2-Dichloropropane-d6	6.066	67	67346	5.297	ug/L	0.00
Spiked Amount	5.000	Range 60 - 140	Recovery	=	106.000%	
41) Toluene-d8	7.317	98	137899	3.663	ug/L	0.00
Spiked Amount	5.000	Range 70 - 130	Recovery	=	73.200%	
43) trans-1,3-Dichloroprop...	7.625	79	20543	4.665	ug/L	0.00
Spiked Amount	5.000	Range 55 - 130	Recovery	=	93.200%	
46) 2-Hexanone-d5	8.088	63	87854	51.546	ug/L	0.00
Spiked Amount	50.000	Range 45 - 130	Recovery	=	103.100%	
56) 1,1,2,2-Tetrachloroeth...	10.214	84	49282	5.358	ug/L	0.00
Spiked Amount	5.000	Range 65 - 120	Recovery	=	107.200%	
66) 1,2-Dichlorobenzene-d4	11.622	152	53492	5.273	ug/L	0.00
Spiked Amount	5.000	Range 80 - 120	Recovery	=	105.400%	
Target Compounds						
2) Dichlorodifluoromethane	1.127	85	3220	0.214	ug/L	98
3) Chloromethane	1.236	50	3352	0.222	ug/L	95
5) Vinyl chloride	1.307	62	2659	0.189	ug/L #	34
6) Bromomethane	1.519	94	1450	0.221	ug/L	96
8) Chloroethane	1.584	64	1502m	0.192	ug/L	
9) Trichlorofluoromethane	1.751	101	4405	0.235	ug/L	98
10) 1,1,2-Trichloro-1,2,-...	2.111	101	2879	0.327	ug/L	89
12) 1,1-Dichloroethene	2.114	96	3129m	0.343	ug/L	
14) Carbon disulfide	2.291	76	6764	0.185	ug/L	97
16) Methylene chloride	2.503	84	6797	0.464	ug/L	97
17) Methyl tert-butyl Ether	2.767	73	4133	0.194	ug/L #	91
18) trans-1,2-Dichloroethene	2.757	96	2039	0.182	ug/L	98
19) 1,1-Dichloroethane	3.185	63	4321	0.201	ug/L #	93
21) 2-Butanone	4.005	43	3475m	1.851	ug/L	
22) cis-1,2-Dichloroethene	3.921	96	2368m	0.214	ug/L	
23) Bromochloromethane	4.246	128	1106m	0.214	ug/L	
25) Chloroform	4.378	83	15478	0.701	ug/L	97
27) 1,2-Dichloroethane	5.140	62	2881	0.228	ug/L #	92
29) 1,1,1-Trichloroethane	4.606	97	3956	0.202	ug/L	94

Data Path : Z:\voasrv\HPCHEM1\MSVOA_V\Data\VW081722\
 Data File : VW027416.D
 Acq On : 17 Aug 2022 11:54
 Operator : SY/MD
 Sample : N4015-02
 Misc : 25.0mL/MSVOA_V/WATER
 ALS Vial : 5 Sample Multiplier: 1

Instrument :
 MSVOA_V
 ClientSampleId :
 MDL-WATER-QT3-2022-06

Manual Integrations
 APPROVED

Reviewed By :Mahesh Dadoda 08/19/2022
 Supervised By :Semsettin Yesilyurt 08/22/2022

Quant Time: Aug 18 01:46:59 2022
 Quant Method : Z:\voasrv\HPCHEM1\MSVOA_V\Method\SFAMVTR081122WMA.M
 Quant Title : TRACE VOA SFAM1.0
 QLast Update : Thu Aug 18 01:40:54 2022
 Response via : Initial Calibration

Compound	R.T.	QIon	Response	Conc	Units	Dev(Min)
30) Cyclohexane	4.670	56	2981	0.188	ug/L	95
31) Carbon tetrachloride	4.828	117	3498	0.205	ug/L	92
33) Benzene	5.104	78	9356	0.196	ug/L	100
34) Trichloroethene	5.915	95	2281	0.192	ug/L	90
35) Methylcyclohexane	6.127	83	4446	0.272	ug/L #	77
37) 1,2-Dichloropropane	6.178	63	2385	0.203	ug/L #	85
38) Bromodichloromethane	6.513	83	3036	0.200	ug/L #	96
39) cis-1,3-Dichloropropene	7.043	75	2907	0.202	ug/L	90
40) 4-Methyl-2-pentanone	7.236	43	6849	1.127	ug/L #	90
44) trans-1,3-Dichloropropene	7.667	75	2595	0.206	ug/L	94
45) 1,1,2-Trichloroethane	7.847	97	1523m	0.181	ug/L	
47) Tetrachloroethene	7.979	164	2170	0.233	ug/L	95
49) Dibromochloromethane	8.249	129	1763	0.179	ug/L	93
50) 1,2-Dibromoethane	8.358	107	1295	0.173	ug/L #	84
51) Chlorobenzene	8.889	112	5979	0.193	ug/L	98
52) Ethylbenzene	9.021	91	8057	0.169	ug/L	97
53) m,p-Xylene	9.140	106	2793	0.153	ug/L	86
54) o-Xylene	9.548	106	2935	0.165	ug/L	85
55) Styrene	9.570	104	4549	0.148	ug/L	96
57) 1,1,2,2-Tetrachloroethane	10.239	83	1963	0.210	ug/L #	81
59) Bromoform	9.738	173	859	0.217	ug/L #	86
60) Isopropylbenzene	9.934	105	7871	0.213	ug/L	99
61) 1,2,3-Trichloropropane	10.275	75	1513	0.267	ug/L #	91
62) 1,3,5-Trimethylbenzene	10.545	105	2609	0.255	ug/L	93
63) 1,2,4-Trimethylbenzene	10.918	105	5317	0.181	ug/L	99
64) 1,3-Dichlorobenzene	11.181	146	3898	0.211	ug/L	97
68) 1,2-Dibromo-3-chloropr...	12.439	75	163	0.138	ug/L #	46
69) 1,3,5-Trichlorobenzene	12.644	180	2647	0.198	ug/L	95
70) 1,2,4-trichlorobenzene	13.268	180	2004	0.201	ug/L	93
71) Naphthalene	13.509	128	2796	0.182	ug/L	96
72) 1,2,3-Trichlorobenzene	13.747	180	1523	0.164	ug/L #	79

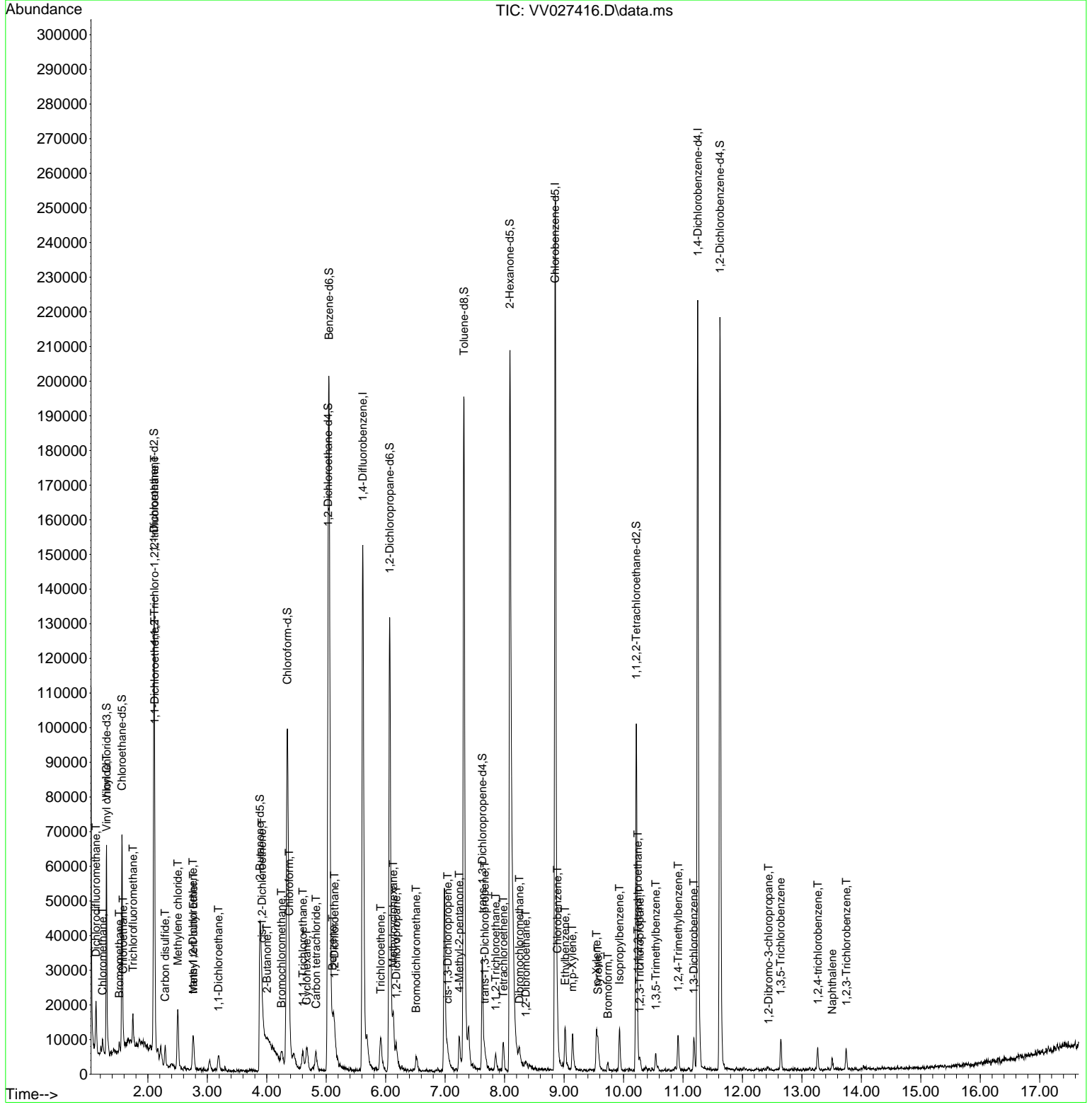
(#) = qualifier out of range (m) = manual integration (+) = signals summed

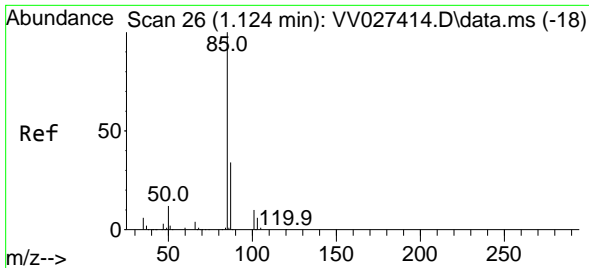
Data Path : Z:\voasrv\HPCHEM1\MSVOA_V\Data\VV081722\
 Data File : VV027416.D
 Acq On : 17 Aug 2022 11:54
 Operator : SY/MD
 Sample : N4015-02
 Misc : 25.0mL/MSVOA_V/WATER
 ALS Vial : 5 Sample Multiplier: 1

Instrument :
 MSVOA_V
ClientSampleId :
 MDL-WATER-QT3-2022-06

Quant Time: Aug 18 01:46:59 2022
 Quant Method : Z:\voasrv\HPCHEM1\MSVOA_V\Method\SFAMVTR081122WMA.M
 Quant Title : TRACE VOA SFAM1.0
 QLast Update : Thu Aug 18 01:40:54 2022
 Response via : Initial Calibration

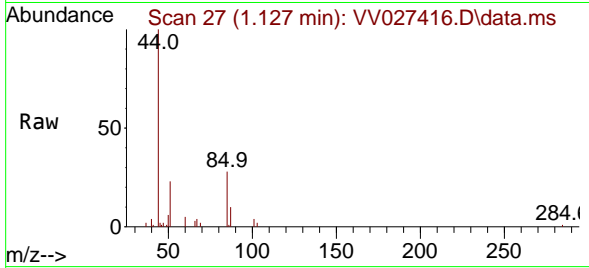
Manual Integrations
APPROVED
 Reviewed By :Mahesh Dadoda 08/19/2022
 Supervised By :Semsettin Yesilyurt 08/22/2022





#2
 Dichlorodifluoromethane
 Concen: 0.214 ug/L
 RT: 1.127 min Scan# 21
 Delta R.T. 0.003 min
 Lab File: VV027416.D
 Acq: 17 Aug 2022 11:54

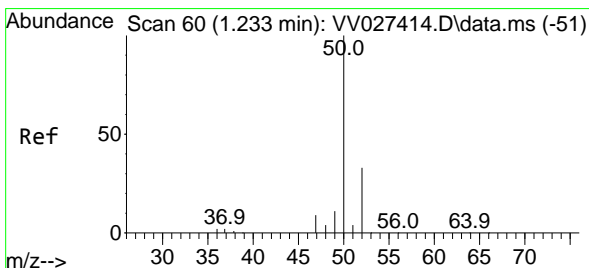
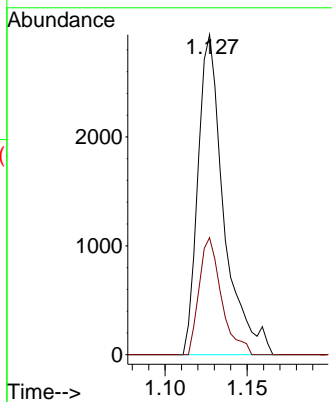
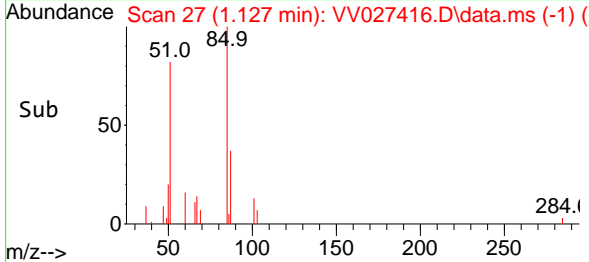
Instrument : MSVOA_V
 ClientSampleId : MDL-WATER-QT3-2022-06



Tgt Ion: 85 Resp: 3220
 Ion Ratio Lower Upper
 85 100
 87 31.6 26.2 39.4

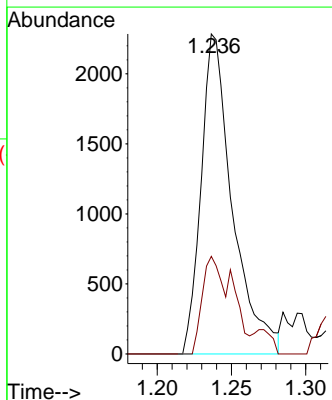
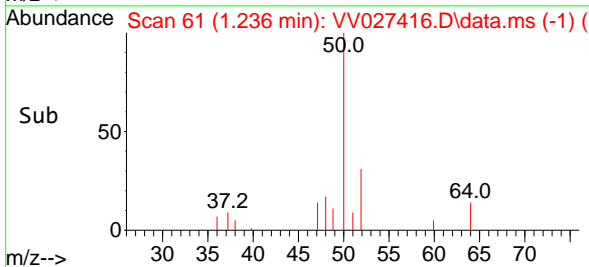
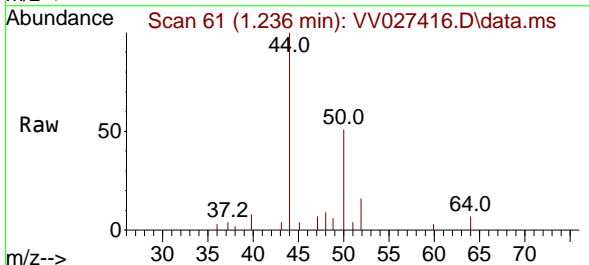
Manual Integrations
APPROVED

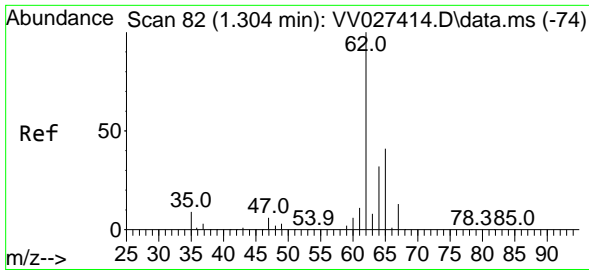
Reviewed By :Mahesh Dadoda 08/19/2022
 Supervised By :Semsettin Yesilyurt 08/22/2022



#3
 Chloromethane
 Concen: 0.222 ug/L
 RT: 1.236 min Scan# 61
 Delta R.T. 0.003 min
 Lab File: VV027416.D
 Acq: 17 Aug 2022 11:54

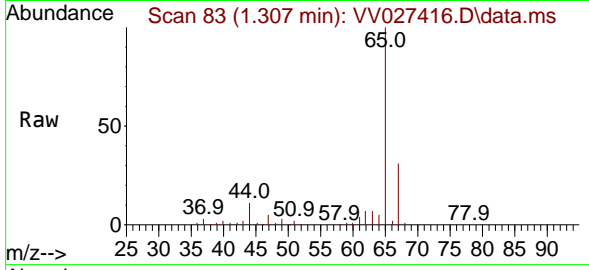
Tgt Ion: 50 Resp: 3352
 Ion Ratio Lower Upper
 50 100
 52 30.5 23.4 43.4





#5
 Vinyl chloride
 Concen: 0.189 ug/L
 RT: 1.307 min Scan# 81
 Delta R.T. 0.003 min
 Lab File: VV027416.D
 Acq: 17 Aug 2022 11:54

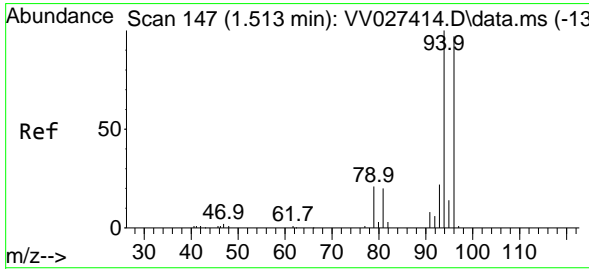
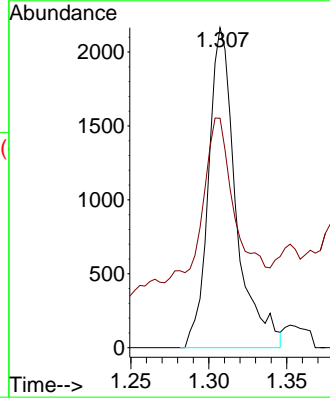
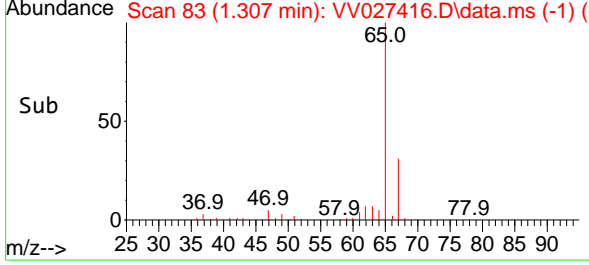
Instrument : MSVOA_V
 ClientSampleId : MDL-WATER-QT3-2022-06



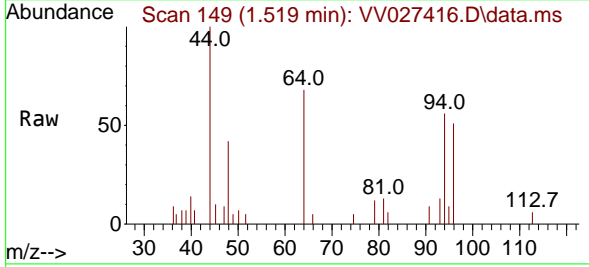
Tgt Ion: 62 Resp: 265
 Ion Ratio Lower Upper
 62 100
 64 71.7 23.7 44.1

Manual Integrations
 APPROVED

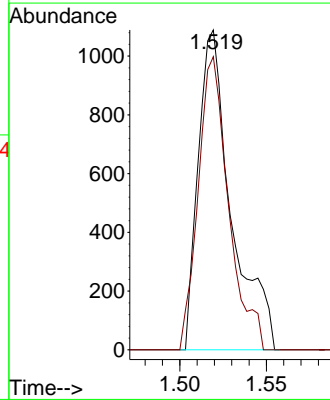
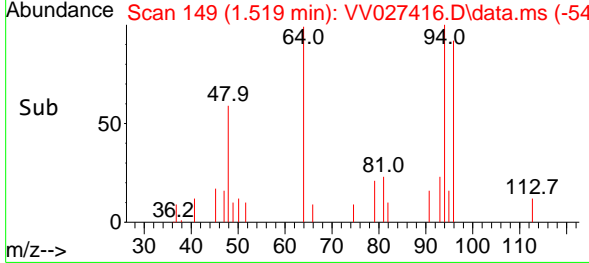
Reviewed By :Mahesh Dadoda 08/19/2022
 Supervised By :Semsettin Yesilyurt 08/22/2022

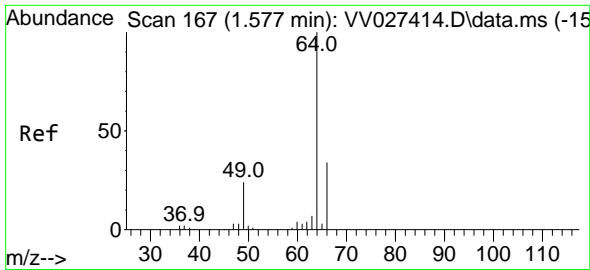


#6
 Bromomethane
 Concen: 0.221 ug/L
 RT: 1.519 min Scan# 149
 Delta R.T. 0.006 min
 Lab File: VV027416.D
 Acq: 17 Aug 2022 11:54



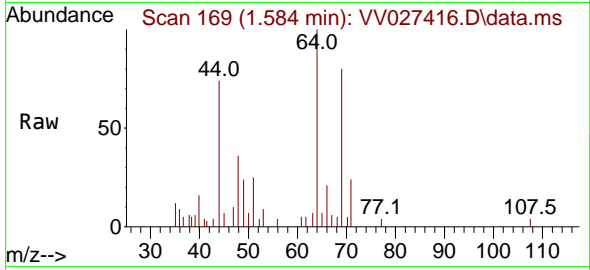
Tgt Ion: 94 Resp: 1450
 Ion Ratio Lower Upper
 94 100
 96 91.6 67.2 124.8





#8
 Chloroethane
 Concen: 0.192 ug/L m
 RT: 1.584 min Scan# 1
 Delta R.T. 0.006 min
 Lab File: VV027416.D
 Acq: 17 Aug 2022 11:54

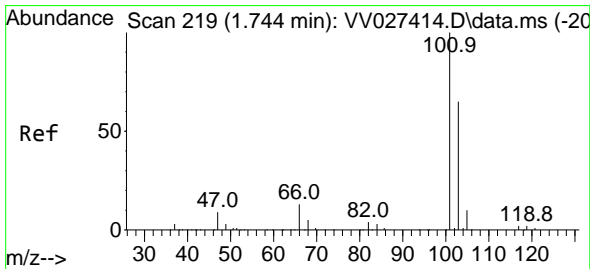
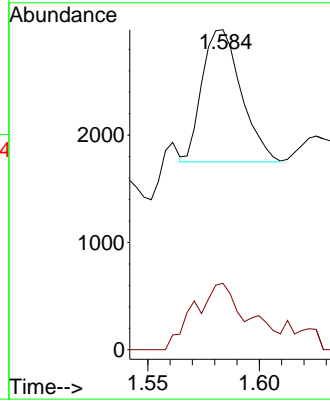
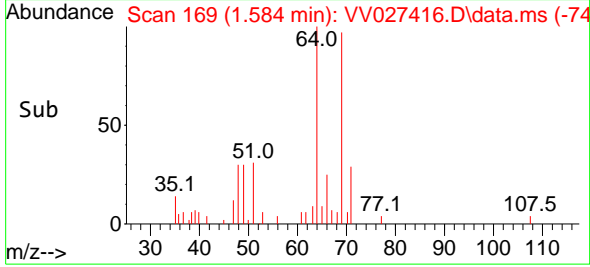
Instrument : MSVOA_V
 ClientSampleId : MDL-WATER-QT3-2022-06



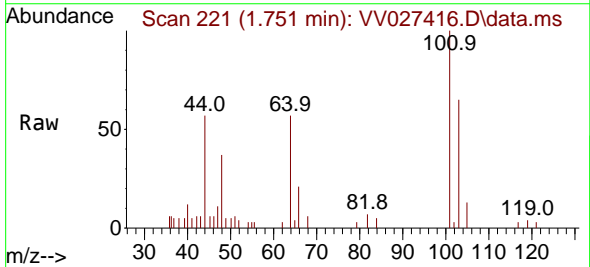
Tgt Ion: 64 Resp: 150
 Ion Ratio Lower Upper
 64 100
 66 20.8 22.3 41.5

Manual Integrations
APPROVED

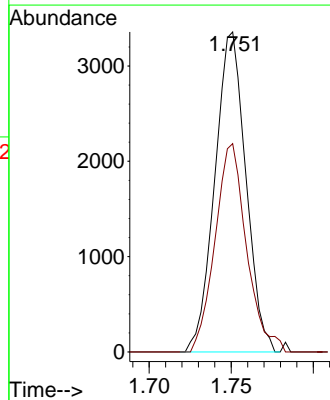
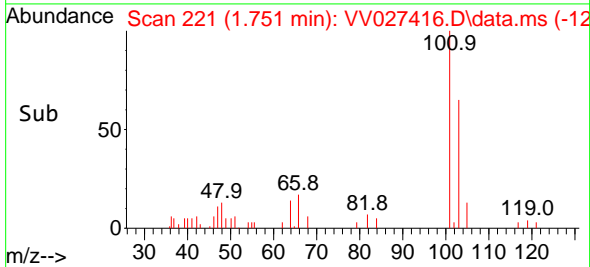
Reviewed By :Mahesh Dadoda 08/19/2022
 Supervised By :Semsettin Yesilyurt 08/22/2022

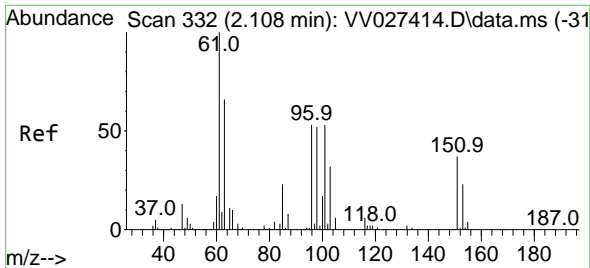


#9
 Trichlorofluoromethane
 Concen: 0.235 ug/L
 RT: 1.751 min Scan# 221
 Delta R.T. 0.006 min
 Lab File: VV027416.D
 Acq: 17 Aug 2022 11:54



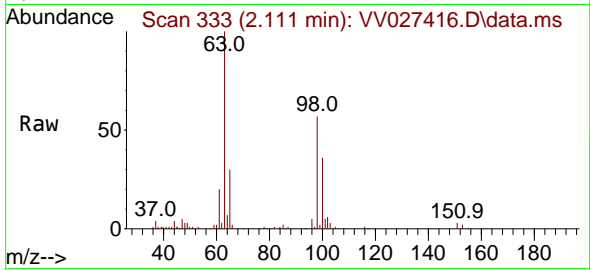
Tgt Ion:101 Resp: 4405
 Ion Ratio Lower Upper
 101 100
 103 66.1 51.4 77.0





#10
 1,1,2-Trichloro-1,2,2-trifluoroethane
 Concen: 0.327 ug/L
 RT: 2.111 min Scan# 333
 Delta R.T. 0.003 min
 Lab File: VV027416.D
 Acq: 17 Aug 2022 11:54

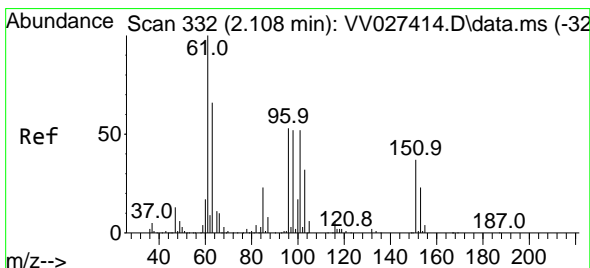
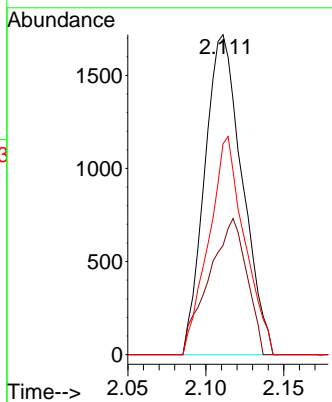
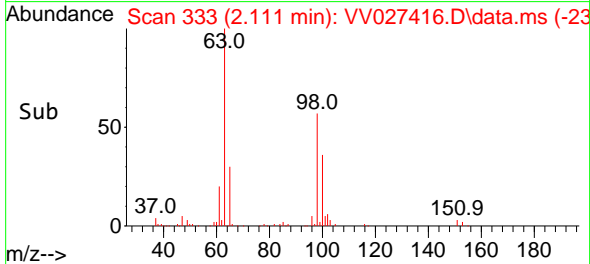
Instrument : MSVOA_V
 ClientSampleId : MDL-WATER-QT3-2022-06



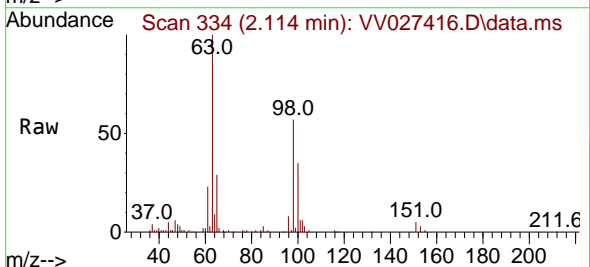
Tgt Ion: 101 Resp: 2879
 Ion Ratio Lower Upper
 101 100
 85 42.9 36.2 54.4
 151 64.7 62.0 93.0

Manual Integrations
 APPROVED

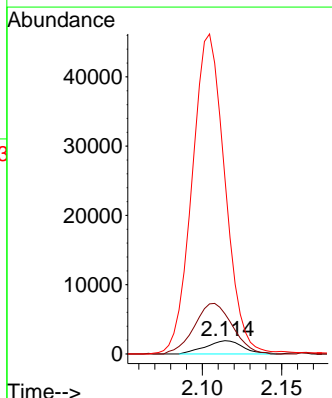
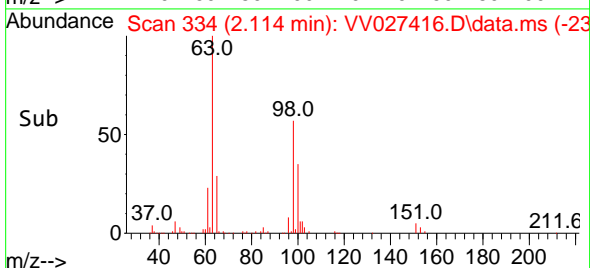
Reviewed By :Mahesh Dadoda 08/19/2022
 Supervised By :Semsettin Yesilyurt 08/22/2022

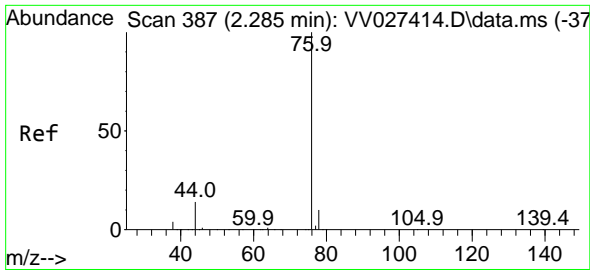


#12
 1,1-Dichloroethene
 Concen: 0.343 ug/L m
 RT: 2.114 min Scan# 334
 Delta R.T. 0.006 min
 Lab File: VV027416.D
 Acq: 17 Aug 2022 11:54



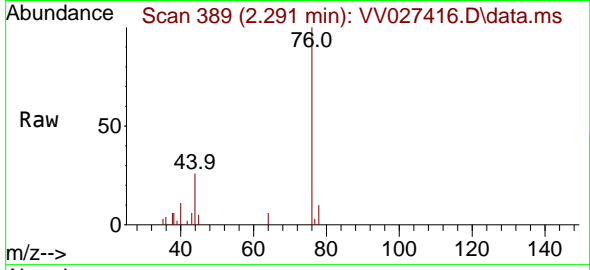
Tgt Ion: 96 Resp: 3129
 Ion Ratio Lower Upper
 96 100
 61 304.1 130.7 242.7#
 63 1330.8 101.4 188.2#





#14
 Carbon disulfide
 Concen: 0.185 ug/L
 RT: 2.291 min Scan# 389
 Delta R.T. 0.006 min
 Lab File: VV027416.D
 Acq: 17 Aug 2022 11:54

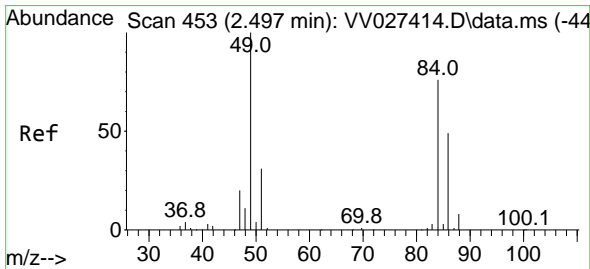
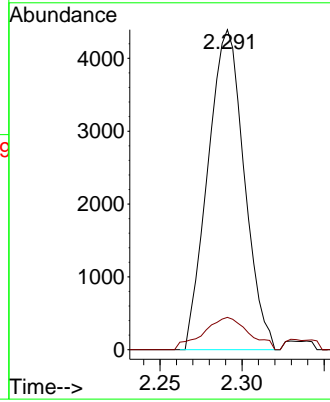
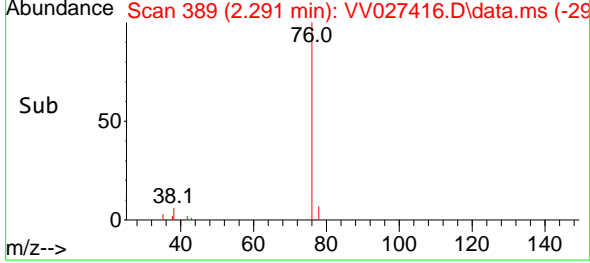
Instrument : MSVOA_V
 Client Sample Id : VV027416.D
 MDL-WATER-QT3-2022-06



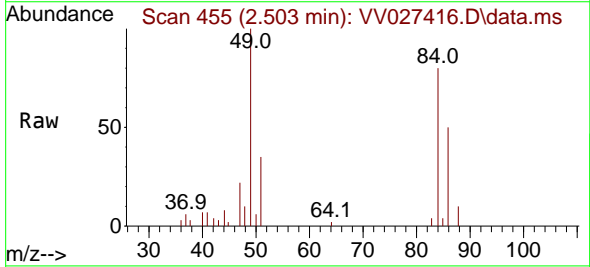
Tgt Ion: 76 Resp: 6764
 Ion Ratio Lower Upper
 76 100
 78 10.1 7.2 10.8

Manual Integrations
 APPROVED

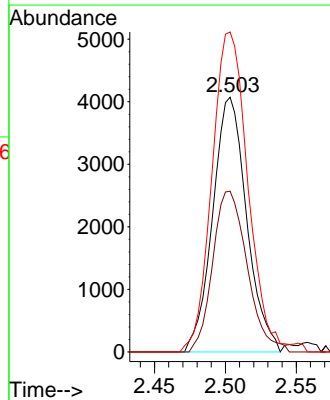
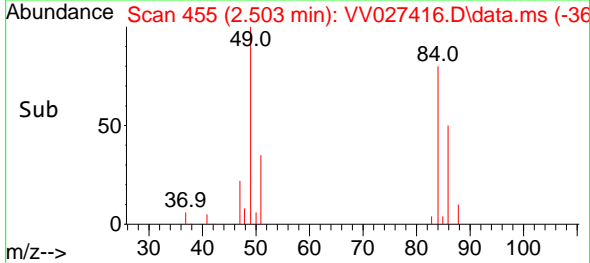
Reviewed By :Mahesh Dadoda 08/19/2022
 Supervised By :Semsettin Yesilyurt 08/22/2022

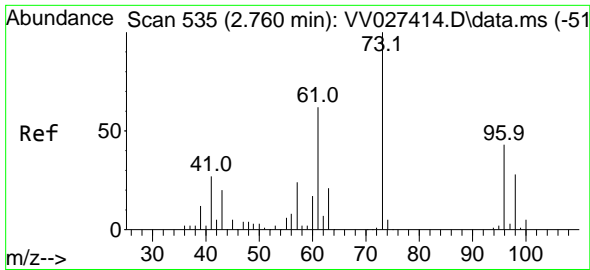


#16
 Methylene chloride
 Concen: 0.464 ug/L
 RT: 2.503 min Scan# 455
 Delta R.T. 0.006 min
 Lab File: VV027416.D
 Acq: 17 Aug 2022 11:54



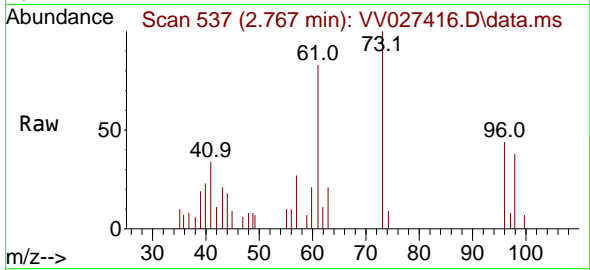
Tgt Ion: 84 Resp: 6797
 Ion Ratio Lower Upper
 84 100
 86 63.1 45.1 83.9
 49 125.6 91.2 169.4





#17
 Methyl tert-butyl Ether
 Concen: 0.194 ug/L
 RT: 2.767 min Scan# 511
 Delta R.T. 0.006 min
 Lab File: VV027416.D
 Acq: 17 Aug 2022 11:54

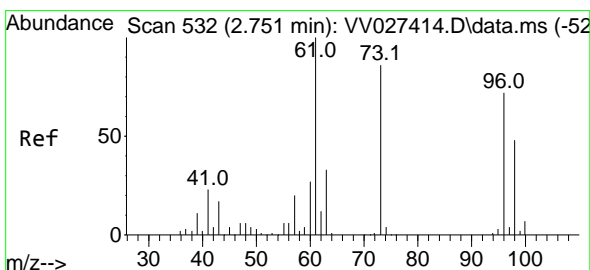
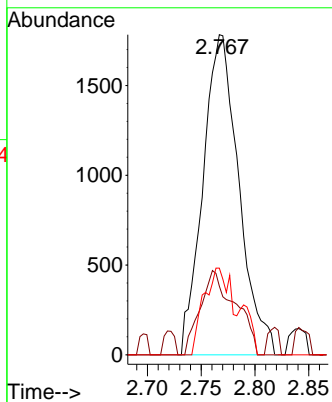
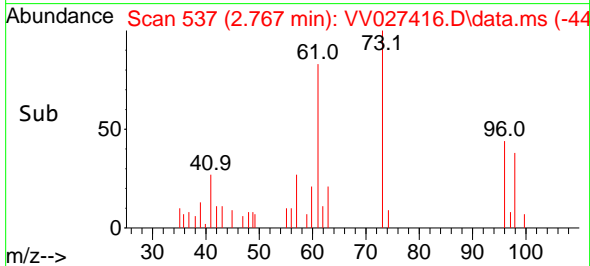
Instrument : MSVOA_V
 ClientSampleId : MDL-WATER-QT3-2022-06



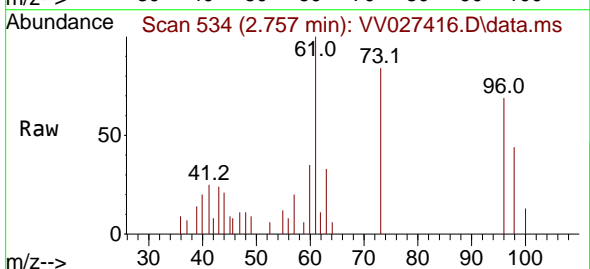
Tgt Ion: 73 Resp: 413
 Ion Ratio Lower Upper
 73 100
 43 25.7 15.8 23.8
 57 20.4 18.3 27.5

Manual Integrations
 APPROVED

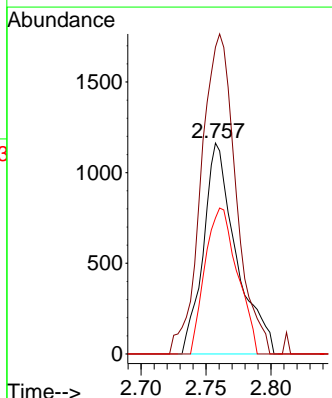
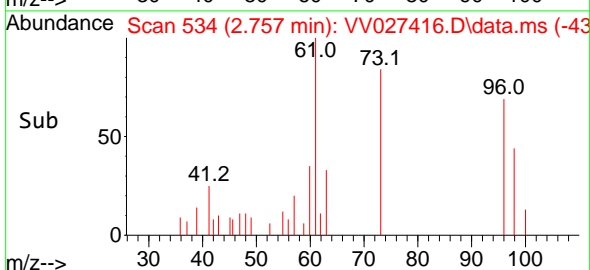
Reviewed By :Mahesh Dadoda 08/19/2022
 Supervised By :Semsettin Yesilyurt 08/22/2022

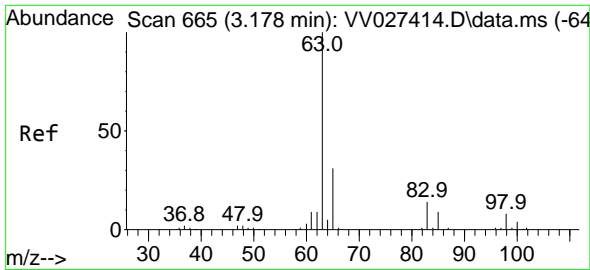


#18
 trans-1,2-Dichloroethene
 Concen: 0.182 ug/L
 RT: 2.757 min Scan# 534
 Delta R.T. 0.006 min
 Lab File: VV027416.D
 Acq: 17 Aug 2022 11:54



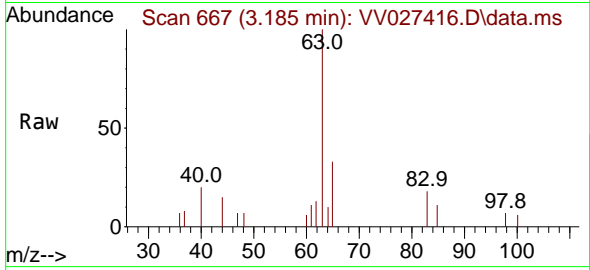
Tgt Ion: 96 Resp: 2039
 Ion Ratio Lower Upper
 96 100
 61 145.6 99.6 185.0
 98 64.5 45.1 83.7





#19
 1,1-Dichloroethane
 Concen: 0.201 ug/L
 RT: 3.185 min Scan# 609
 Delta R.T. 0.006 min
 Lab File: VV027416.D
 Acq: 17 Aug 2022 11:54

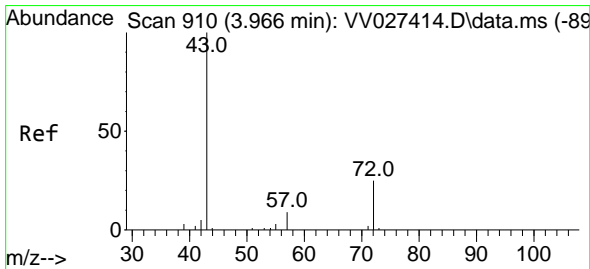
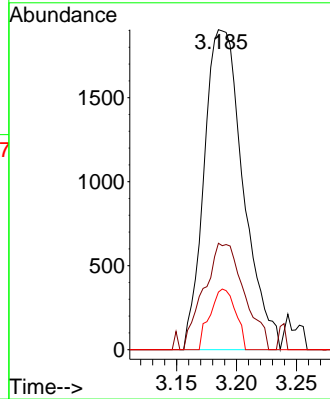
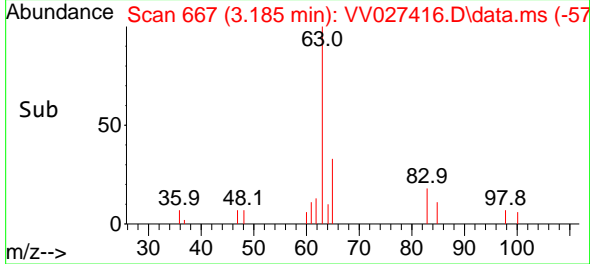
Instrument : MSVOA_V
 ClientSampleId : MDL-WATER-QT3-2022-06



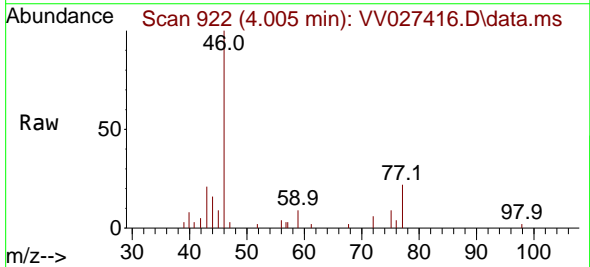
Tgt Ion: 63 Resp: 432
 Ion Ratio Lower Upper
 63 100
 65 33.3 21.6 40.2
 83 18.0 9.3 17.3

Manual Integrations
APPROVED

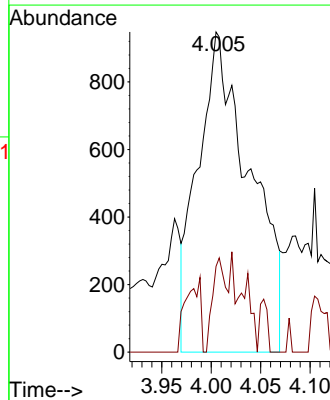
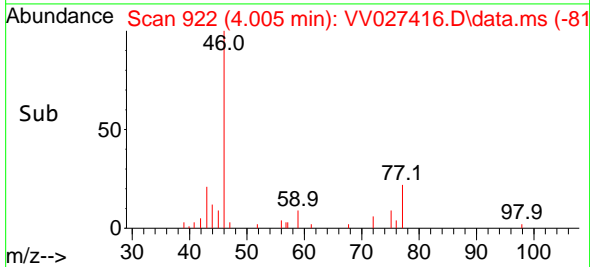
Reviewed By :Mahesh Dadoda 08/19/2022
 Supervised By :Semsettin Yesilyurt 08/22/2022

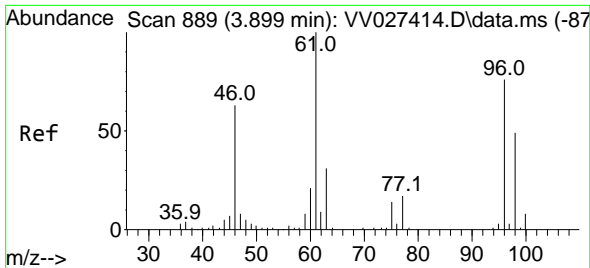


#21
 2-Butanone
 Concen: 1.851 ug/L m
 RT: 4.005 min Scan# 922
 Delta R.T. 0.039 min
 Lab File: VV027416.D
 Acq: 17 Aug 2022 11:54



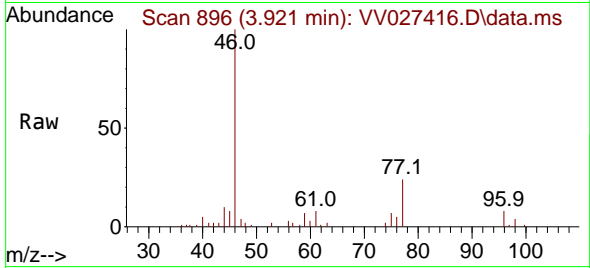
Tgt Ion: 43 Resp: 3475
 Ion Ratio Lower Upper
 43 100
 72 7.8 12.9 38.6





#22
 cis-1,2-Dichloroethene
 Concen: 0.214 ug/L m
 RT: 3.921 min Scan# 896
 Delta R.T. 0.022 min
 Lab File: VV027416.D
 Acq: 17 Aug 2022 11:54

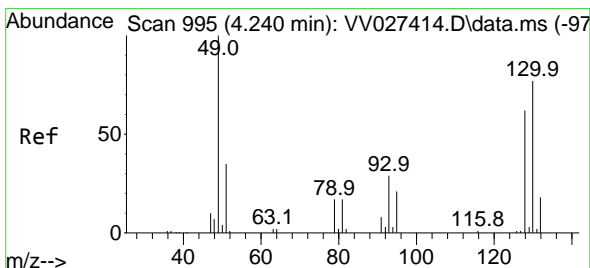
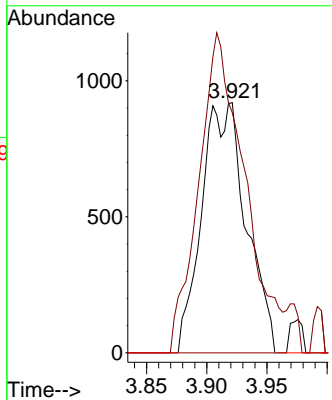
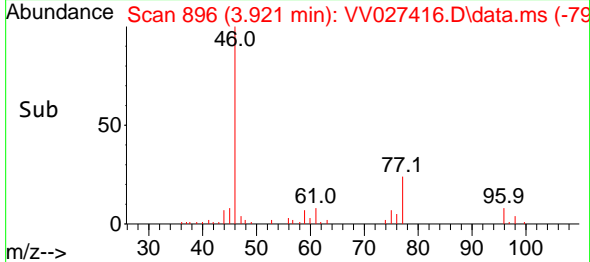
Instrument : MSVOA_V
 ClientSampleId : MDL-WATER-QT3-2022-06



Tgt Ion: 96 Resp: 236
 Ion Ratio Lower Upper
 96 100
 61 96.0 91.3 169.5
 68 0.0 0.0 0.0

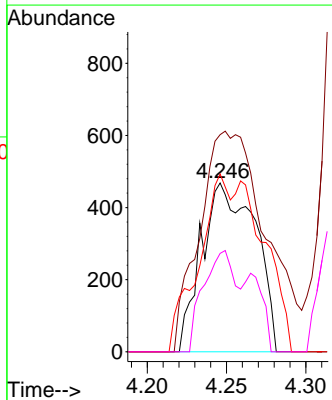
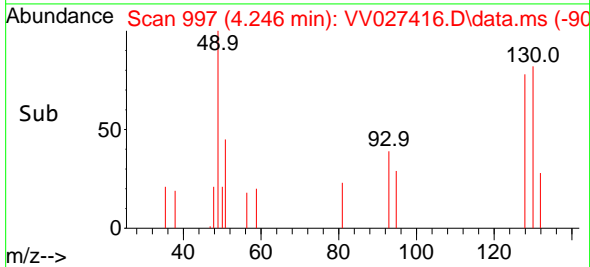
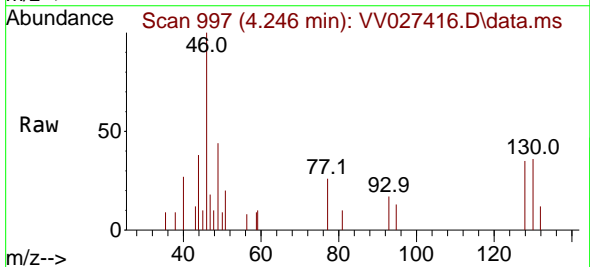
Manual Integrations
APPROVED

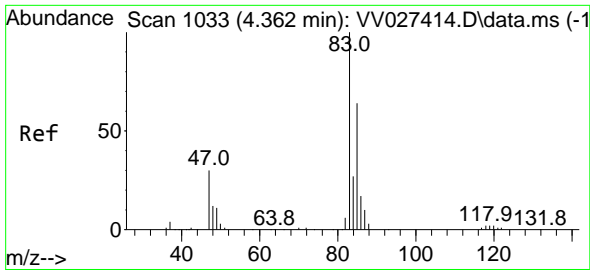
Reviewed By :Mahesh Dadoda 08/19/2022
 Supervised By :Semsettin Yesilyurt 08/22/2022



#23
 Bromochloromethane
 Concen: 0.214 ug/L m
 RT: 4.246 min Scan# 997
 Delta R.T. 0.006 min
 Lab File: VV027416.D
 Acq: 17 Aug 2022 11:54

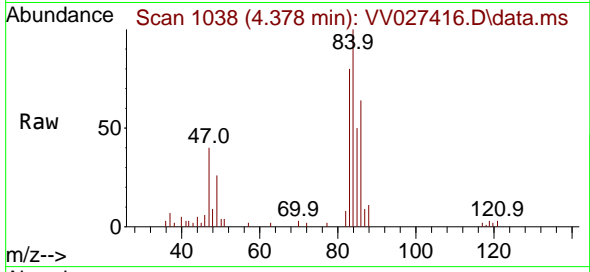
Tgt Ion:128 Resp: 1106
 Ion Ratio Lower Upper
 128 100
 49 128.6 118.5 220.1
 130 105.3 90.3 167.7
 51 58.3 42.7 64.1





#25
 Chloroform
 Concen: 0.701 ug/L
 RT: 4.378 min Scan# 1038
 Delta R.T. 0.016 min
 Lab File: VV027416.D
 Acq: 17 Aug 2022 11:54

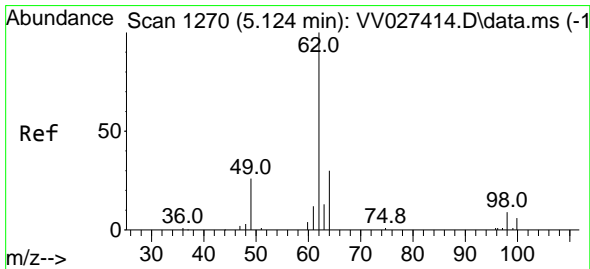
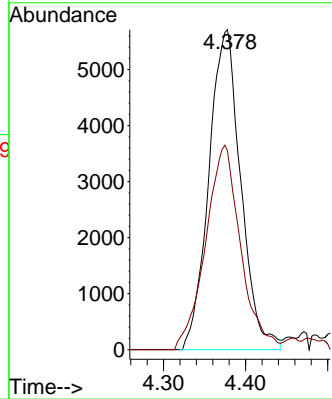
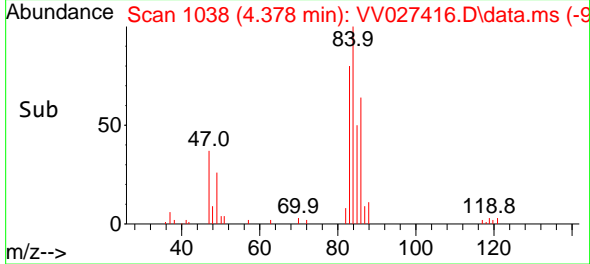
Instrument : MSVOA_V
 Client Sample Id : VV027416.D
 MDL-WATER-QT3-2022-06



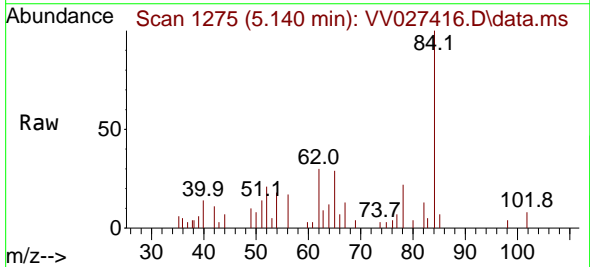
Tgt Ion: 83 Resp: 15478
 Ion Ratio Lower Upper
 83 100
 85 62.2 45.2 84.0

Manual Integrations
APPROVED

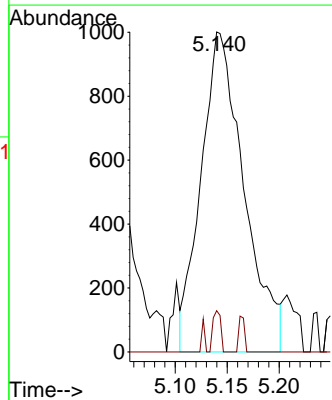
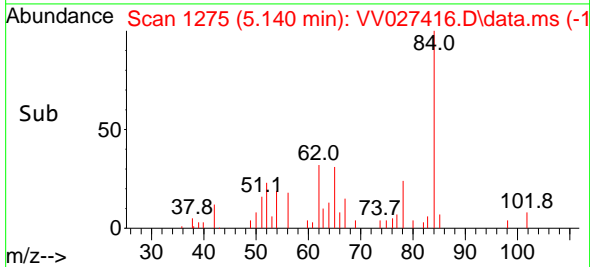
Reviewed By :Mahesh Dadoda 08/19/2022
 Supervised By :Semsettin Yesilyurt 08/22/2022

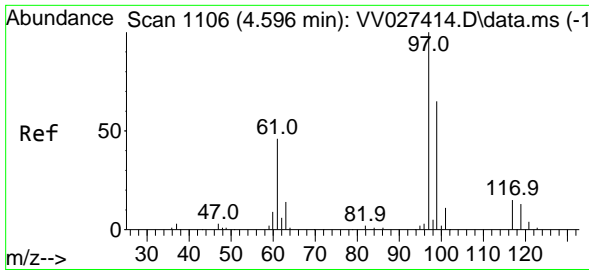


#27
 1,2-Dichloroethane
 Concen: 0.228 ug/L
 RT: 5.140 min Scan# 1275
 Delta R.T. 0.016 min
 Lab File: VV027416.D
 Acq: 17 Aug 2022 11:54



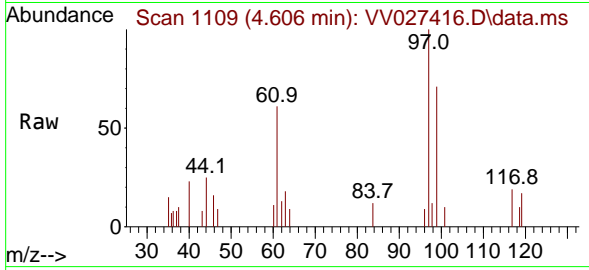
Tgt Ion: 62 Resp: 2881
 Ion Ratio Lower Upper
 62 100
 98 12.9 7.8 11.8#





#29
 1,1,1-Trichloroethane
 Concen: 0.202 ug/L
 RT: 4.606 min Scan# 1109
 Delta R.T. 0.010 min
 Lab File: VV027416.D
 Acq: 17 Aug 2022 11:54

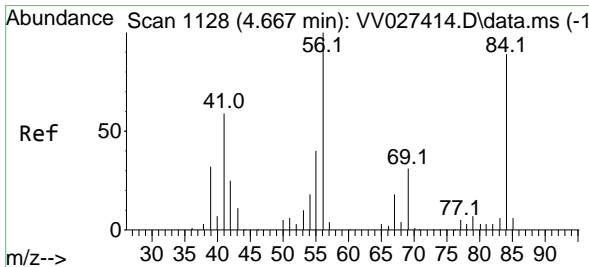
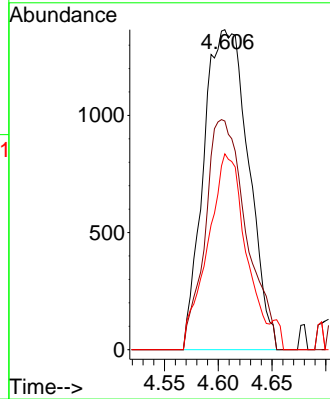
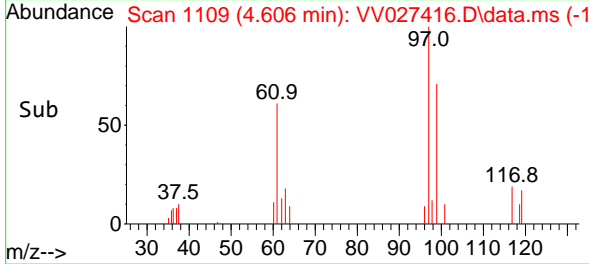
Instrument : MSVOA_V
 ClientSampleId : MDL-WATER-QT3-2022-06



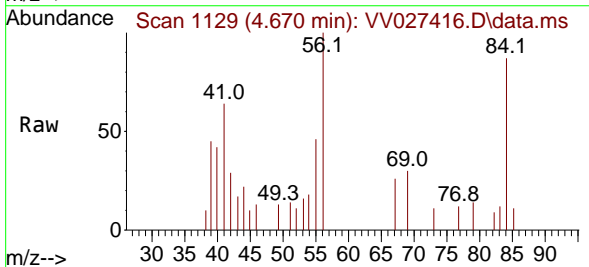
Tgt Ion: 97 Resp: 3950
 Ion Ratio Lower Upper
 97 100
 99 65.9 50.8 76.2
 61 52.1 36.5 54.7

Manual Integrations
 APPROVED

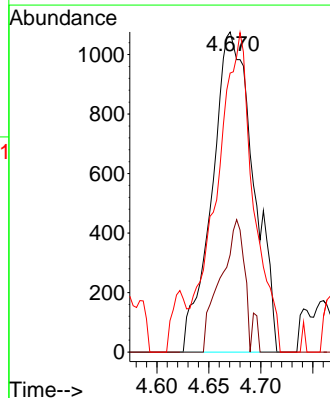
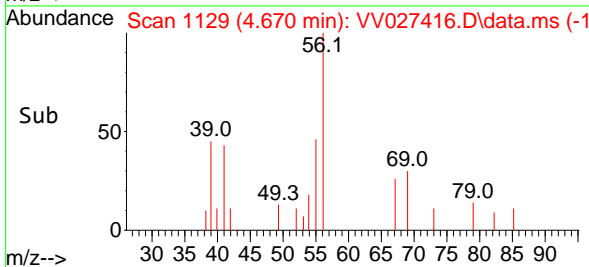
Reviewed By :Mahesh Dadoda 08/19/2022
 Supervised By :Semsettin Yesilyurt 08/22/2022

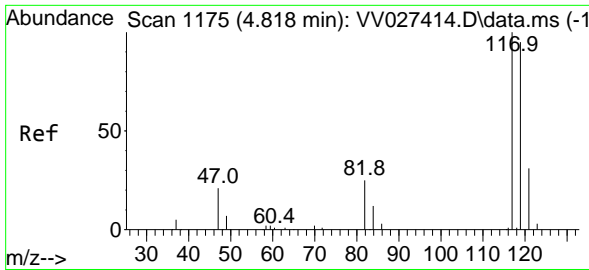


#30
 Cyclohexane
 Concen: 0.188 ug/L
 RT: 4.670 min Scan# 1129
 Delta R.T. 0.003 min
 Lab File: VV027416.D
 Acq: 17 Aug 2022 11:54



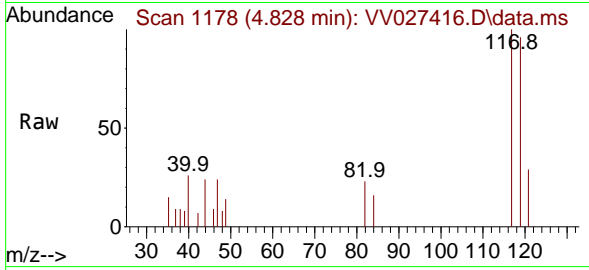
Tgt Ion: 56 Resp: 2981
 Ion Ratio Lower Upper
 56 100
 69 25.2 24.0 36.0
 84 89.3 69.1 103.7





#31
 Carbon tetrachloride
 Concen: 0.205 ug/L
 RT: 4.828 min Scan# 1178
 Delta R.T. 0.010 min
 Lab File: VV027416.D
 Acq: 17 Aug 2022 11:54

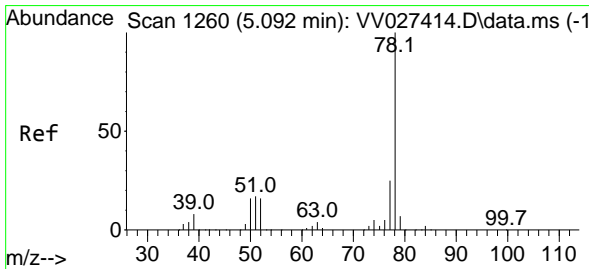
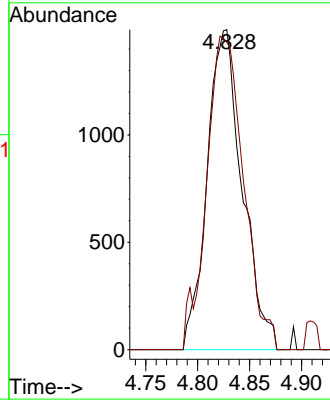
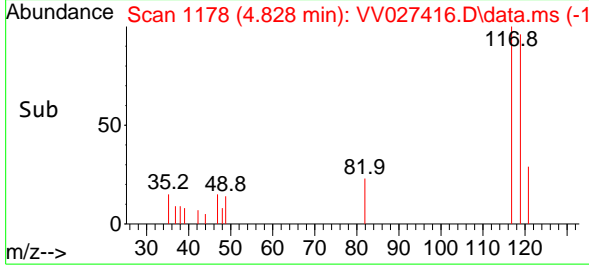
Instrument : MSVOA_V
 Client Sample Id : VV027416.D
 MDL-WATER-QT3-2022-06



Tgt Ion: 117 Resp: 3498
 Ion Ratio Lower Upper
 117 100
 119 103.2 76.6 115.0

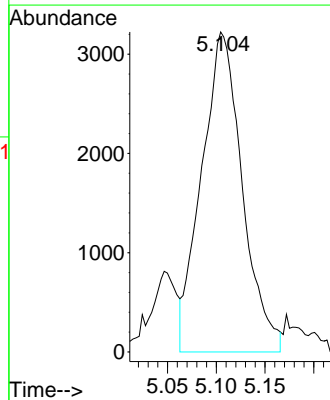
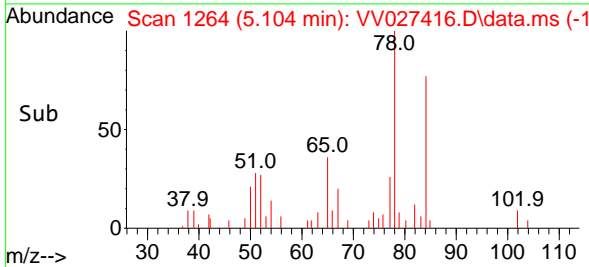
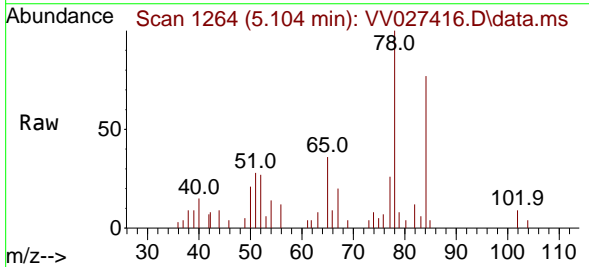
Manual Integrations
APPROVED

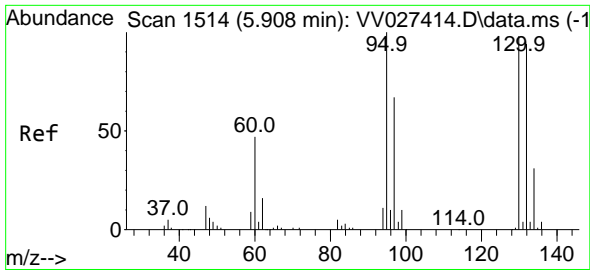
Reviewed By :Mahesh Dadoda 08/19/2022
 Supervised By :Semsettin Yesilyurt 08/22/2022



#33
 Benzene
 Concen: 0.196 ug/L
 RT: 5.104 min Scan# 1264
 Delta R.T. 0.013 min
 Lab File: VV027416.D
 Acq: 17 Aug 2022 11:54

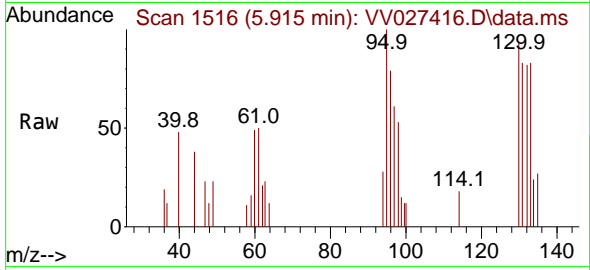
Tgt Ion: 78 Resp: 9356





#34
 Trichloroethene
 Concen: 0.192 ug/L
 RT: 5.915 min Scan# 1514
 Delta R.T. 0.006 min
 Lab File: VV027416.D
 Acq: 17 Aug 2022 11:54

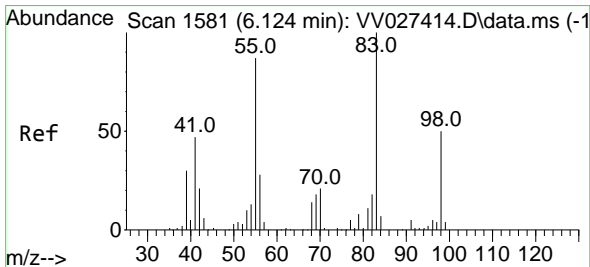
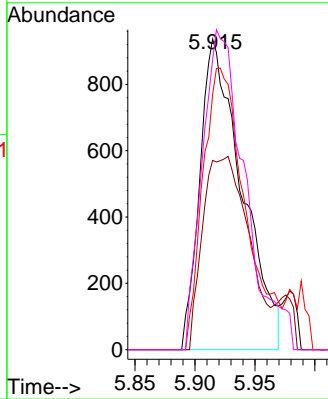
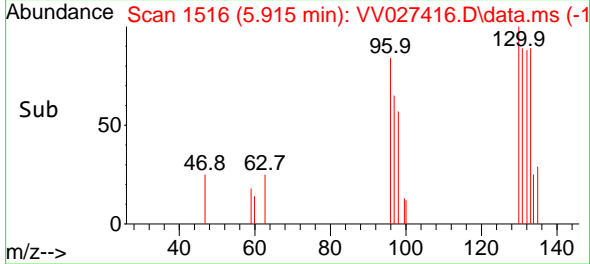
Instrument : MSVOA_V
 ClientSampleId : VV027416.D
 MDL-WATER-QT3-2022-06



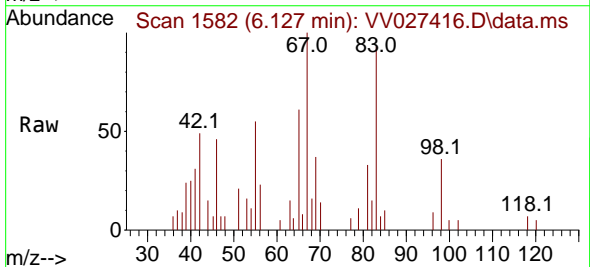
Tgt Ion: 95 Resp: 228
 Ion Ratio Lower Upper
 95 100
 97 60.9 45.5 84.5
 132 82.1 68.2 126.6
 130 93.3 70.3 130.7

Manual Integrations
 APPROVED

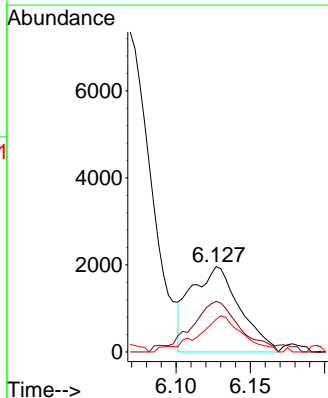
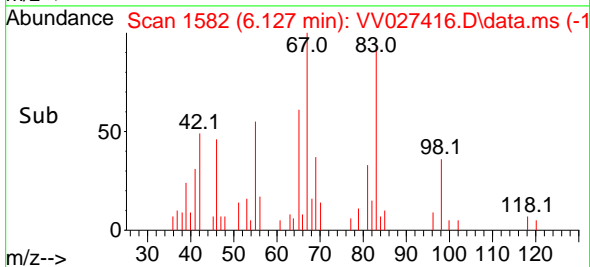
Reviewed By :Mahesh Dadoda 08/19/2022
 Supervised By :Semsettin Yesilyurt 08/22/2022

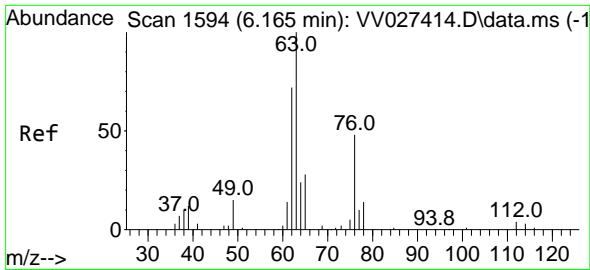


#35
 Methylcyclohexane
 Concen: 0.272 ug/L
 RT: 6.127 min Scan# 1582
 Delta R.T. 0.003 min
 Lab File: VV027416.D
 Acq: 17 Aug 2022 11:54



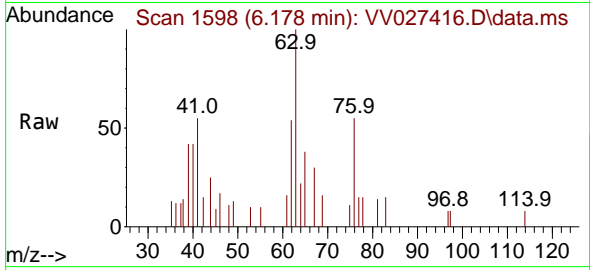
Tgt Ion: 83 Resp: 4446
 Ion Ratio Lower Upper
 83 100
 55 59.0 67.0 100.6#
 98 38.6 38.7 58.1#





#37
 1,2-Dichloropropane
 Concen: 0.203 ug/L
 RT: 6.178 min Scan# 11
 Delta R.T. 0.013 min
 Lab File: VV027416.D
 Acq: 17 Aug 2022 11:54

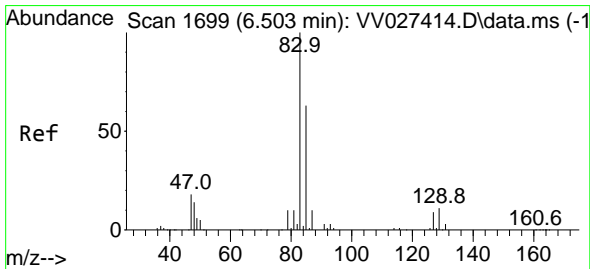
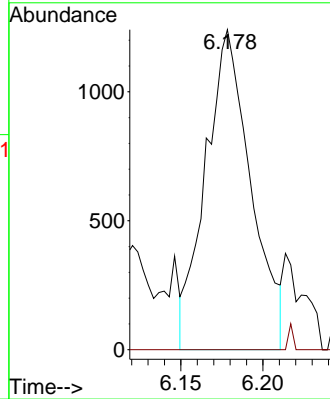
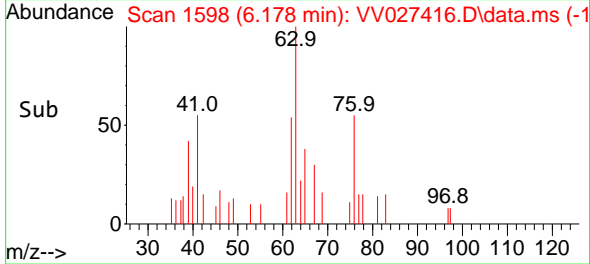
Instrument : MSVOA_V
 ClientSampleId : MDL-WATER-QT3-2022-06



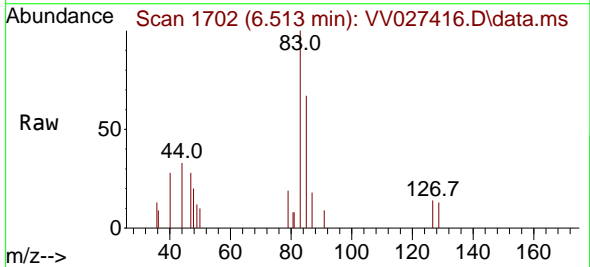
Tgt Ion: 63 Resp: 238
 Ion Ratio Lower Upper
 63 100
 112 0.0 4.0 6.0

Manual Integrations
APPROVED

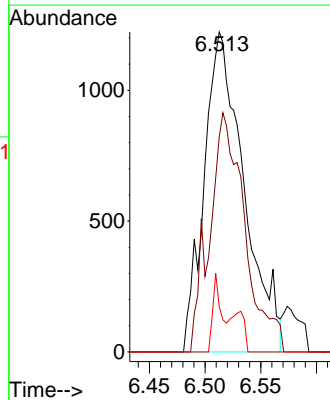
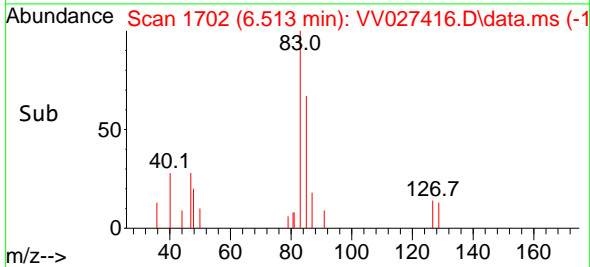
Reviewed By :Mahesh Dadoda 08/19/2022
 Supervised By :Semsettin Yesilyurt 08/22/2022

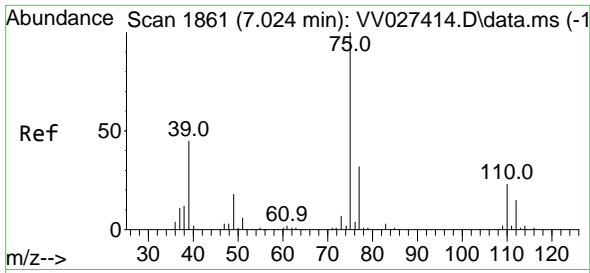


#38
 Bromodichloromethane
 Concen: 0.200 ug/L
 RT: 6.513 min Scan# 1702
 Delta R.T. 0.010 min
 Lab File: VV027416.D
 Acq: 17 Aug 2022 11:54



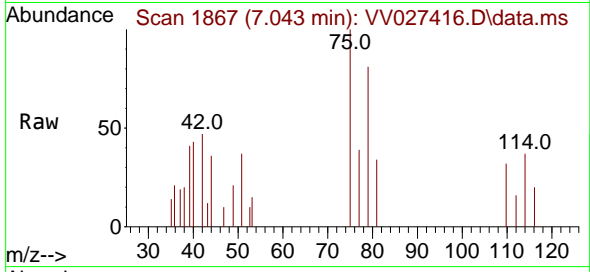
Tgt Ion: 83 Resp: 3036
 Ion Ratio Lower Upper
 83 100
 85 67.2 45.4 84.4
 127 14.1 7.0 10.6#





#39
 cis-1,3-Dichloropropene
 Concen: 0.202 ug/L
 RT: 7.043 min Scan# 1867
 Delta R.T. 0.019 min
 Lab File: VV027416.D
 Acq: 17 Aug 2022 11:54

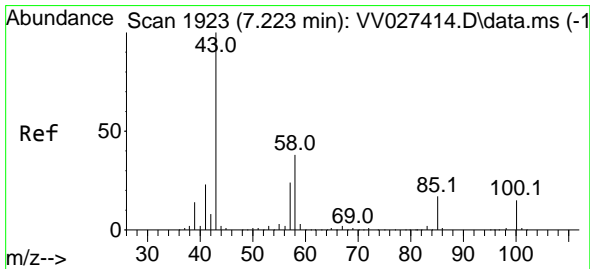
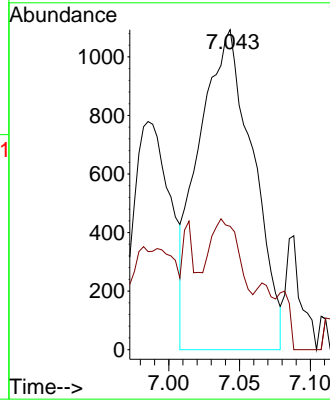
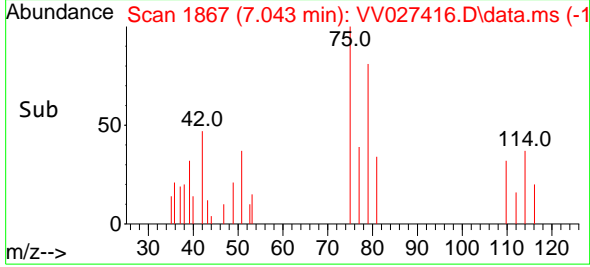
Instrument : MSVOA_V
 Client Sample Id : MDL-WATER-QT3-2022-06



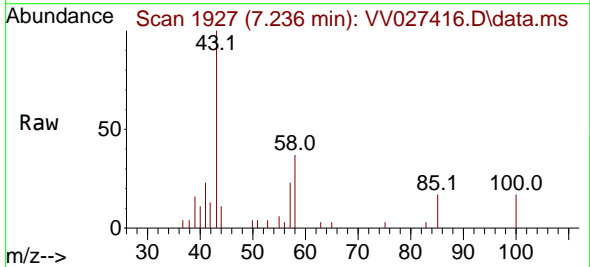
Tgt Ion: 75 Resp: 290
 Ion Ratio Lower Upper
 75 100
 77 38.5 23.2 43.0

Manual Integrations
APPROVED

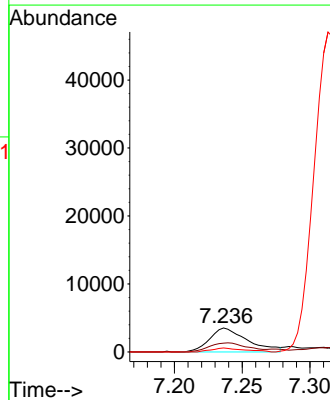
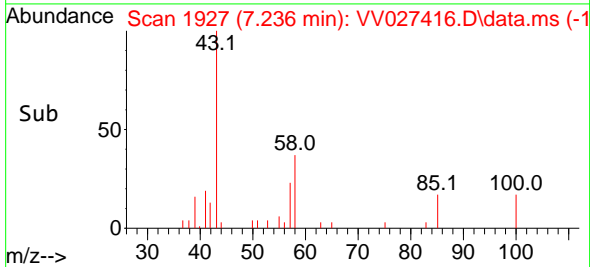
Reviewed By :Mahesh Dadoda 08/19/2022
 Supervised By :Semsettin Yesilyurt 08/22/2022

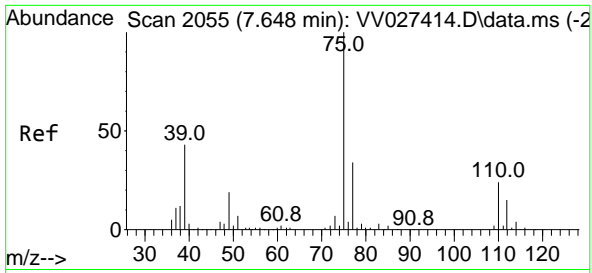


#40
 4-Methyl-2-pentanone
 Concen: 1.127 ug/L
 RT: 7.236 min Scan# 1927
 Delta R.T. 0.013 min
 Lab File: VV027416.D
 Acq: 17 Aug 2022 11:54



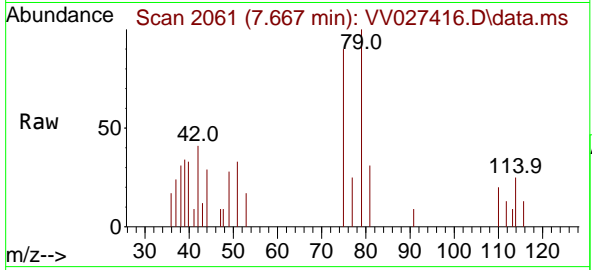
Tgt Ion: 43 Resp: 6849
 Ion Ratio Lower Upper
 43 100
 58 37.7 31.0 46.4
 100 0.0 10.9 16.3#





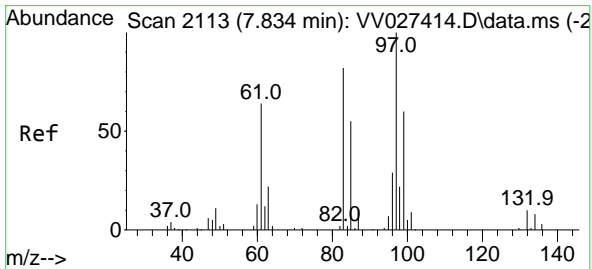
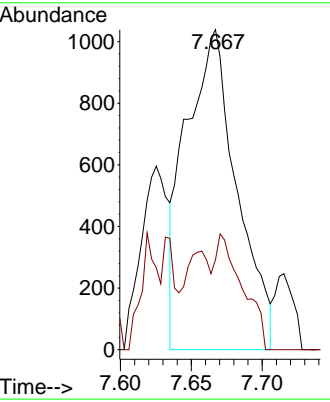
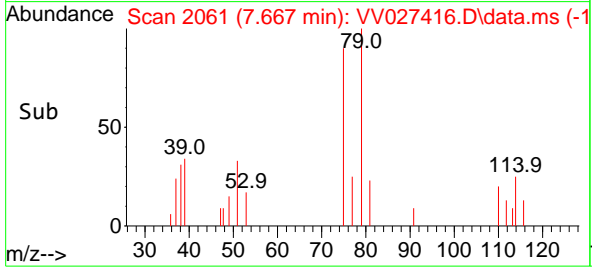
#44
 trans-1,3-Dichloropropene
 Concen: 0.206 ug/L
 RT: 7.667 min Scan# 2055
 Delta R.T. 0.019 min
 Lab File: VV027416.D
 Acq: 17 Aug 2022 11:54

Instrument : MSVOA_V
 ClientSampleId : MDL-WATER-QT3-2022-06

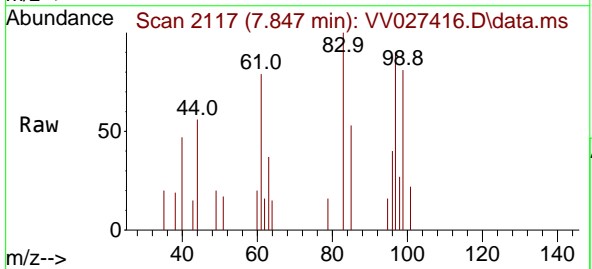


Tgt Ion: 75 Resp: 259
 Ion Ratio Lower Upper
 75 100
 77 28.1 21.9 40.7

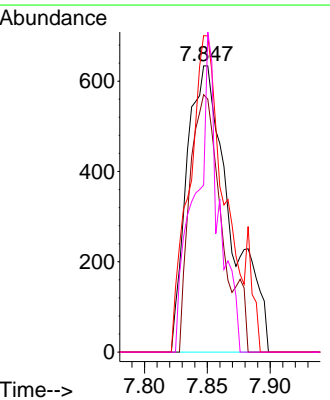
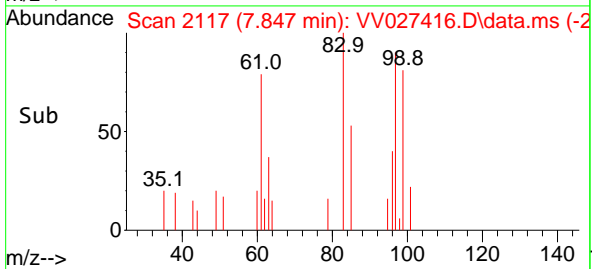
Manual Integrations
APPROVED
 Reviewed By :Mahesh Dadoda 08/19/2022
 Supervised By :Semsettin Yesilyurt 08/22/2022

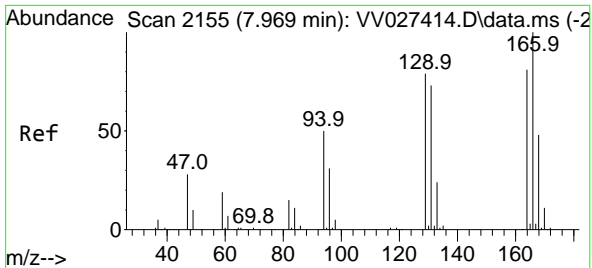


#45
 1,1,2-Trichloroethane
 Concen: 0.181 ug/L m
 RT: 7.847 min Scan# 2117
 Delta R.T. 0.013 min
 Lab File: VV027416.D
 Acq: 17 Aug 2022 11:54



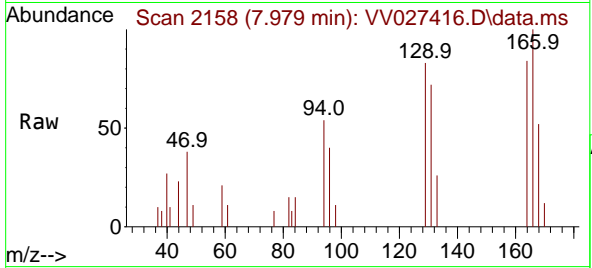
Tgt Ion: 97 Resp: 1523
 Ion Ratio Lower Upper
 97 100
 99 89.9 43.7 81.1#
 83 110.6 59.8 111.0
 85 58.4 39.1 72.7





#47
 Tetrachloroethene
 Concen: 0.233 ug/L
 RT: 7.979 min Scan# 2158
 Delta R.T. 0.010 min
 Lab File: VV027416.D
 Acq: 17 Aug 2022 11:54

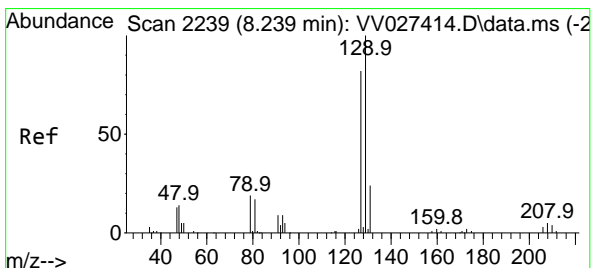
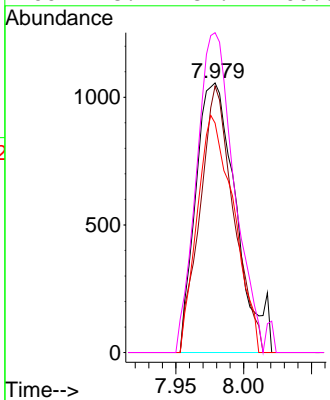
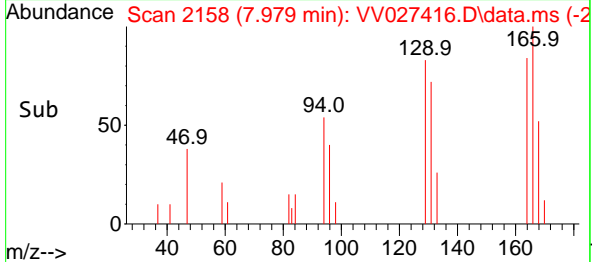
Instrument : MSVOA_V
 ClientSampleId :
 MDL-WATER-QT3-2022-06



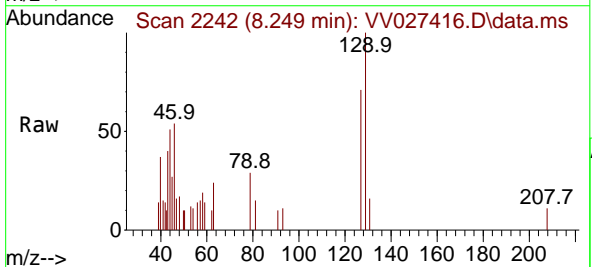
Tgt Ion:164 Resp: 2170
 Ion Ratio Lower Upper
 164 100
 129 98.9 69.0 128.1
 131 85.1 64.7 120.1
 166 118.7 89.4 166.0

Manual Integrations
 APPROVED

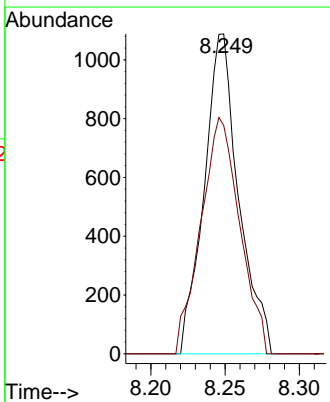
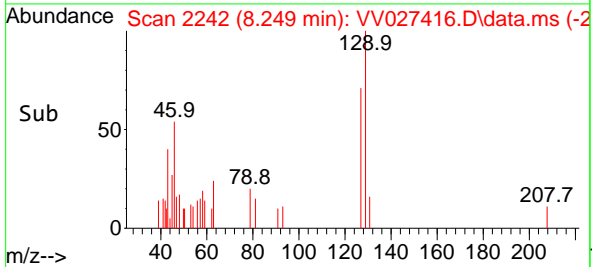
Reviewed By :Mahesh Dadoda 08/19/2022
 Supervised By :Semsettin Yesilyurt 08/22/2022

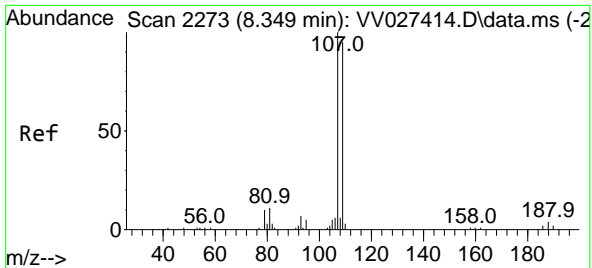


#49
 Dibromochloromethane
 Concen: 0.179 ug/L
 RT: 8.249 min Scan# 2242
 Delta R.T. 0.010 min
 Lab File: VV027416.D
 Acq: 17 Aug 2022 11:54



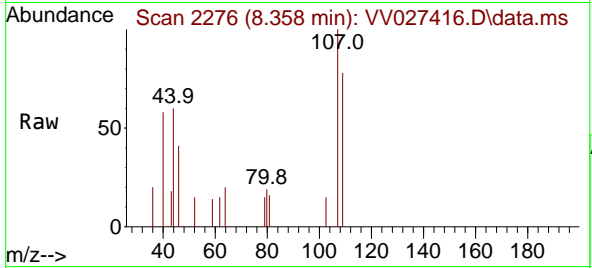
Tgt Ion:129 Resp: 1763
 Ion Ratio Lower Upper
 129 100
 127 71.4 54.5 101.3





#50
 1,2-Dibromoethane
 Concen: 0.173 ug/L
 RT: 8.358 min Scan# 2111
 Delta R.T. 0.010 min
 Lab File: VV027416.D
 Acq: 17 Aug 2022 11:54

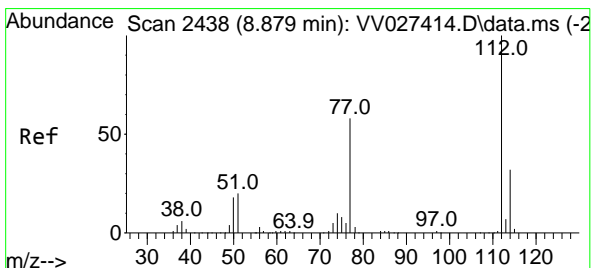
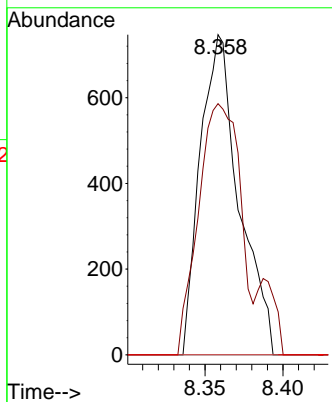
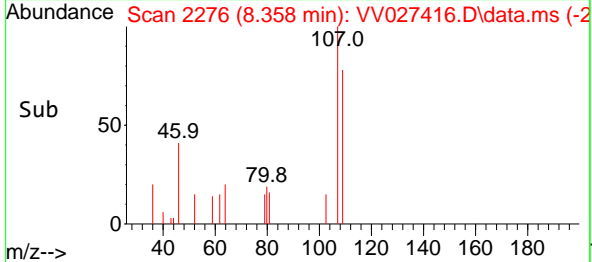
Instrument : MSVOA_V
 ClientSampleId : MDL-WATER-QT3-2022-06



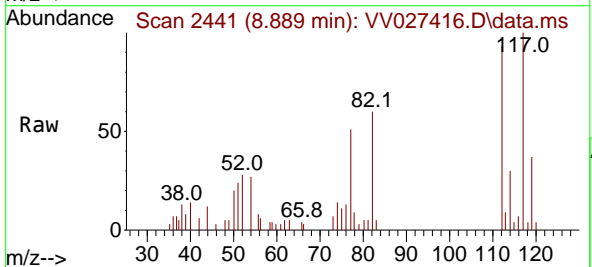
Tgt Ion:107 Resp: 129
 Ion Ratio Lower Upper
 107 100
 109 78.4 66.1 122.8
 188 0.0 3.4 5.2

Manual Integrations
APPROVED

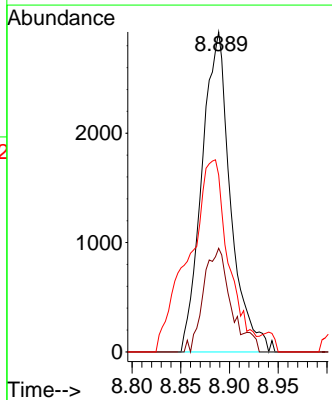
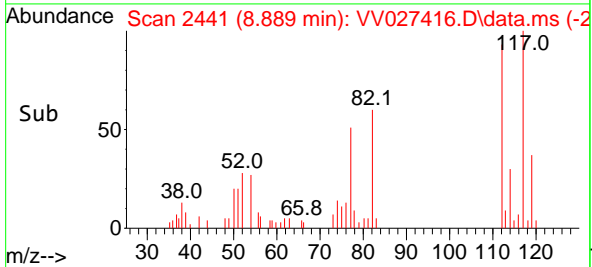
Reviewed By :Mahesh Dadoda 08/19/2022
 Supervised By :Semsettin Yesilyurt 08/22/2022

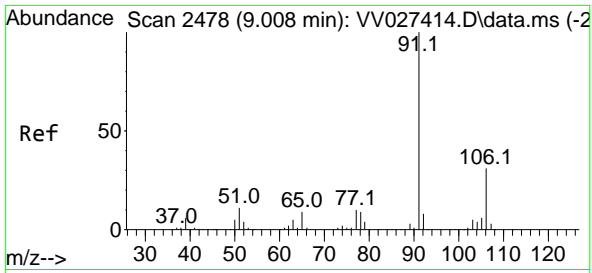


#51
 Chlorobenzene
 Concen: 0.193 ug/L
 RT: 8.889 min Scan# 2441
 Delta R.T. 0.010 min
 Lab File: VV027416.D
 Acq: 17 Aug 2022 11:54



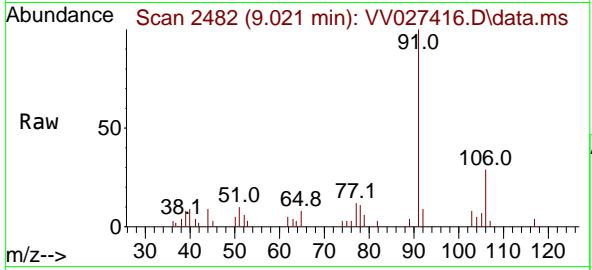
Tgt Ion:112 Resp: 5979
 Ion Ratio Lower Upper
 112 100
 114 32.4 22.5 41.9
 77 55.3 46.4 69.6





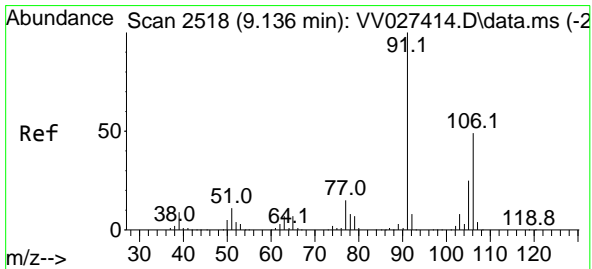
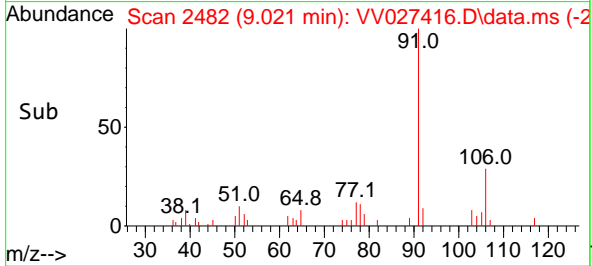
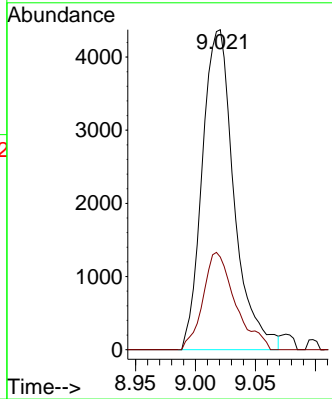
#52
 Ethylbenzene
 Concen: 0.169 ug/L
 RT: 9.021 min Scan# 2478
 Delta R.T. 0.013 min
 Lab File: VV027416.D
 Acq: 17 Aug 2022 11:54

Instrument : MSVOA_V
 ClientSampleId : MDL-WATER-QT3-2022-06

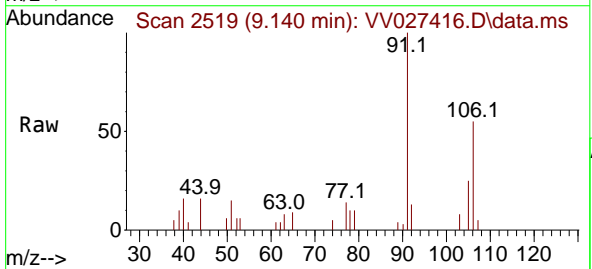


Tgt Ion: 91 Resp: 805
 Ion Ratio Lower Upper
 91 100
 106 29.0 21.5 39.9

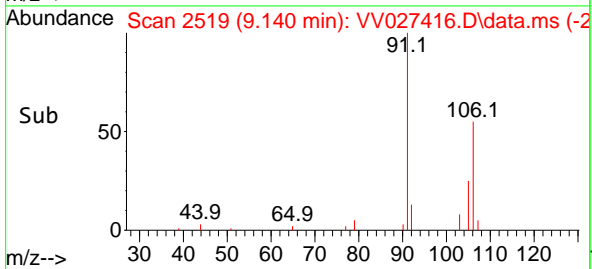
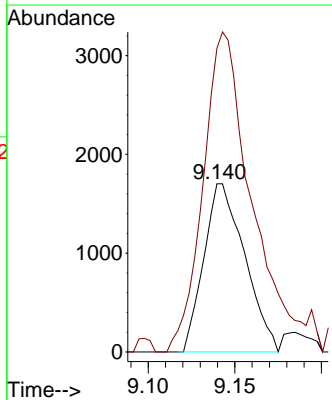
Manual Integrations
APPROVED
 Reviewed By :Mahesh Dadoda 08/19/2022
 Supervised By :Semsettin Yesilyurt 08/22/2022

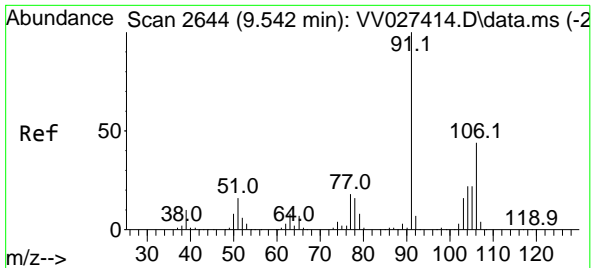


#53
 m,p-Xylene
 Concen: 0.153 ug/L
 RT: 9.140 min Scan# 2519
 Delta R.T. 0.003 min
 Lab File: VV027416.D
 Acq: 17 Aug 2022 11:54



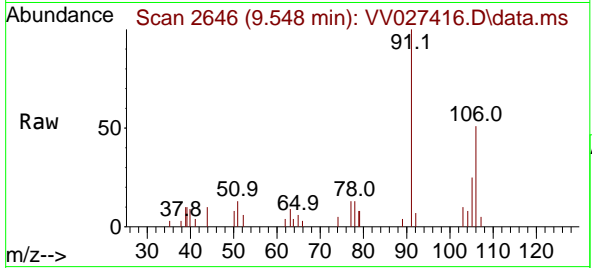
Tgt Ion:106 Resp: 2793
 Ion Ratio Lower Upper
 106 100
 91 180.6 141.5 262.9





#54
 o-Xylene
 Concen: 0.165 ug/L
 RT: 9.548 min Scan# 2646
 Delta R.T. 0.006 min
 Lab File: VV027416.D
 Acq: 17 Aug 2022 11:54

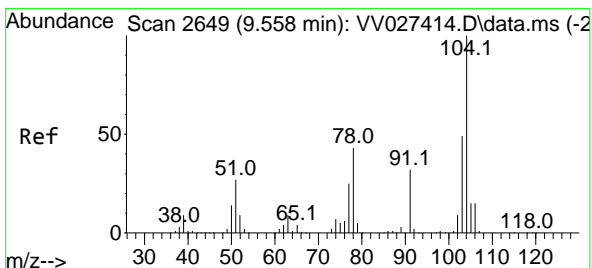
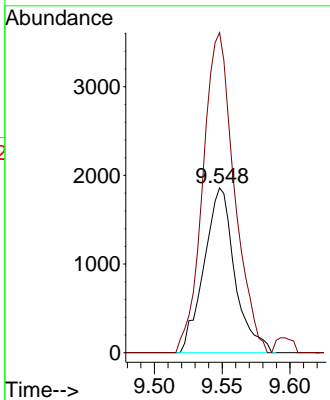
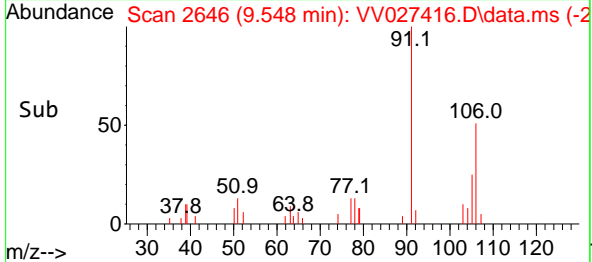
Instrument : MSVOA_V
 Client Sample Id : MDL-WATER-QT3-2022-06



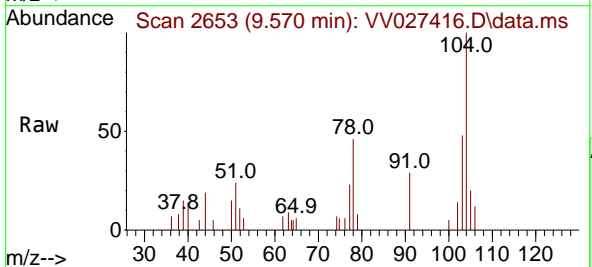
Tgt Ion: 106 Resp: 2938
 Ion Ratio Lower Upper
 106 100
 91 194.2 153.2 284.4

Manual Integrations
APPROVED

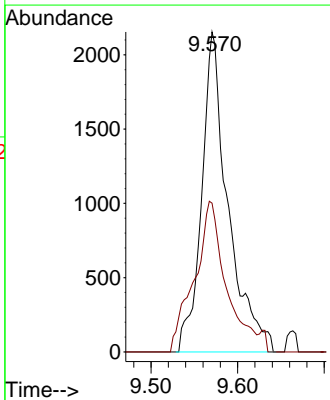
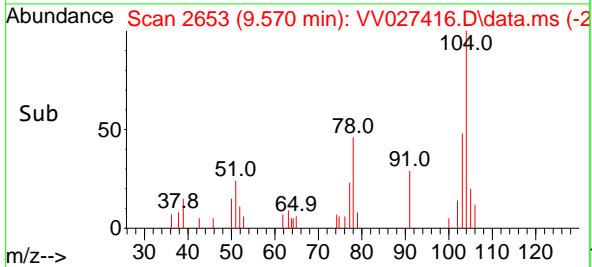
Reviewed By : Mahesh Dadoda 08/19/2022
 Supervised By : Semsettin Yesilyurt 08/22/2022

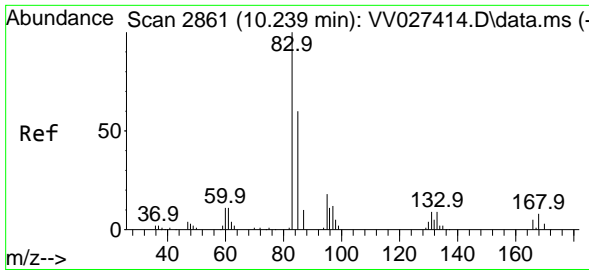


#55
 Styrene
 Concen: 0.148 ug/L
 RT: 9.570 min Scan# 2653
 Delta R.T. 0.013 min
 Lab File: VV027416.D
 Acq: 17 Aug 2022 11:54



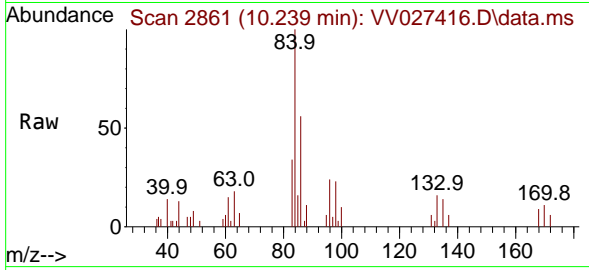
Tgt Ion: 104 Resp: 4549
 Ion Ratio Lower Upper
 104 100
 78 46.5 30.7 57.1





#57
 1,1,2,2-Tetrachloroethane
 Concen: 0.210 ug/L
 RT: 10.239 min Scan# 21
 Delta R.T. -0.000 min
 Lab File: VV027416.D
 Acq: 17 Aug 2022 11:54

Instrument : MSVOA_V
 ClientSampleId : MDL-WATER-QT3-2022-06

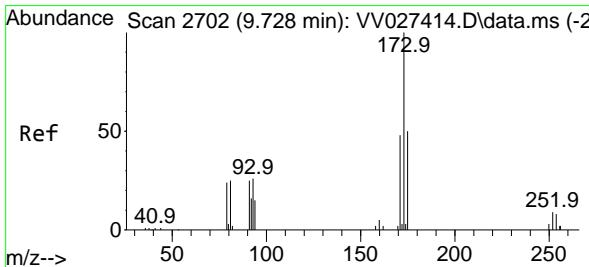
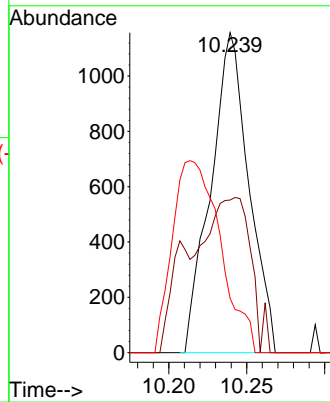
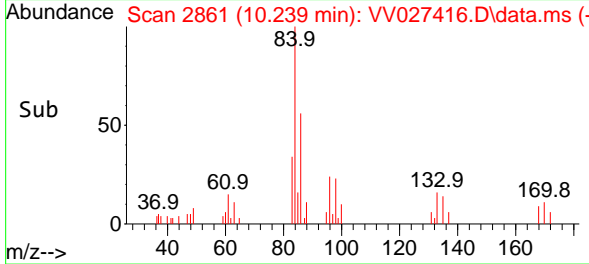


Tgt Ion: 83 Resp: 196

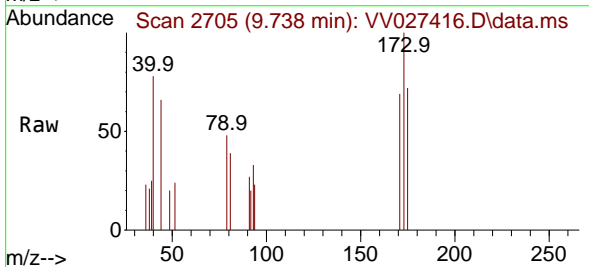
Ion	Ratio	Lower	Upper
83	100		
85	47.7	43.3	80.3
131	16.9	7.7	11.5

Manual Integrations
APPROVED

Reviewed By :Mahesh Dadoda 08/19/2022
 Supervised By :Semsettin Yesilyurt 08/22/2022

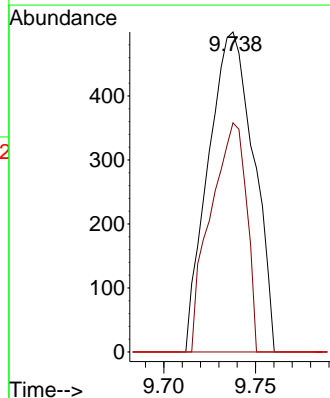
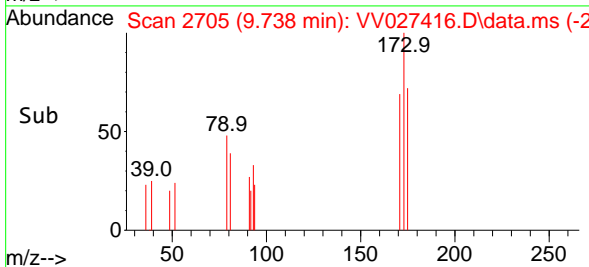


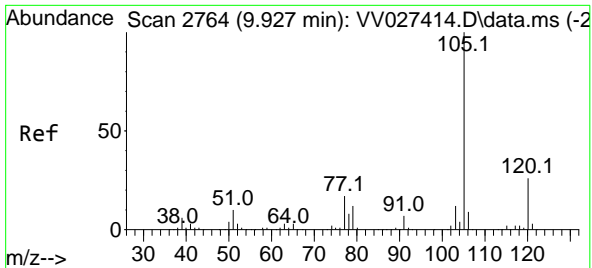
#59
 Bromoform
 Concen: 0.217 ug/L
 RT: 9.738 min Scan# 2705
 Delta R.T. 0.010 min
 Lab File: VV027416.D
 Acq: 17 Aug 2022 11:54



Tgt Ion:173 Resp: 859

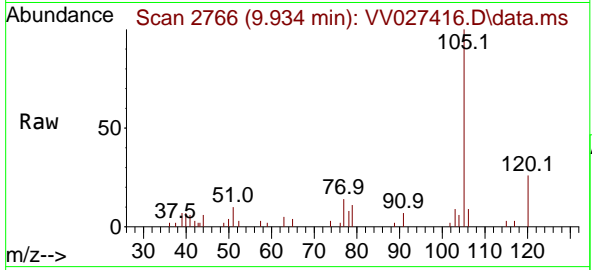
Ion	Ratio	Lower	Upper
173	100		
175	56.5	38.2	57.2
254	0.0	6.5	9.7#





#60
 Isopropylbenzene
 Concen: 0.213 ug/L
 RT: 9.934 min Scan# 2766
 Delta R.T. 0.006 min
 Lab File: VV027416.D
 Acq: 17 Aug 2022 11:54

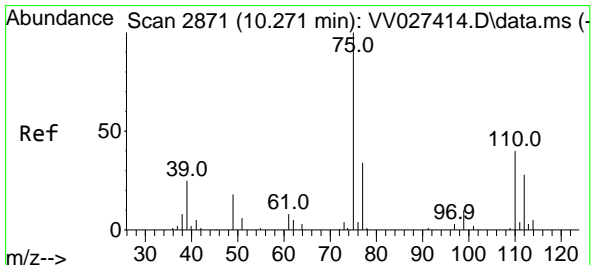
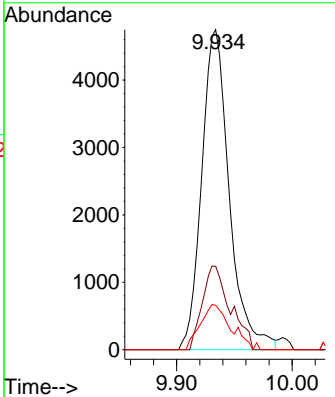
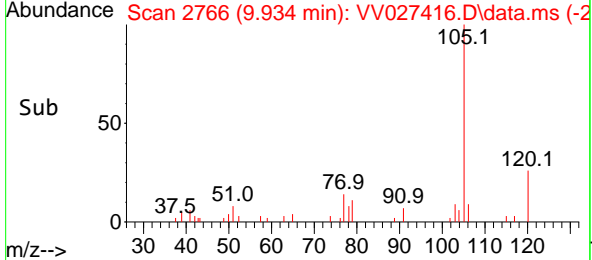
Instrument : MSVOA_V
 ClientSampleId : VV027416.D
 MDL-WATER-QT3-2022-06



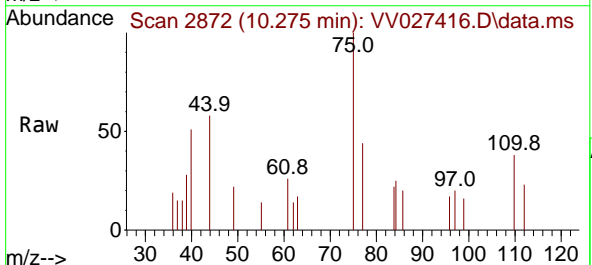
Tgt Ion: 105 Resp: 787

Ion	Ratio	Lower	Upper
105	100		
120	26.5	21.0	31.4
77	15.6	13.2	19.8

Manual Integrations
APPROVED
 Reviewed By :Mahesh Dadoda 08/19/2022
 Supervised By :Semsettin Yesilyurt 08/22/2022

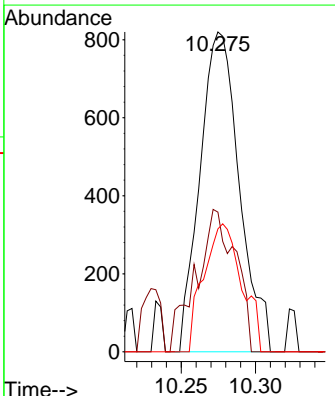
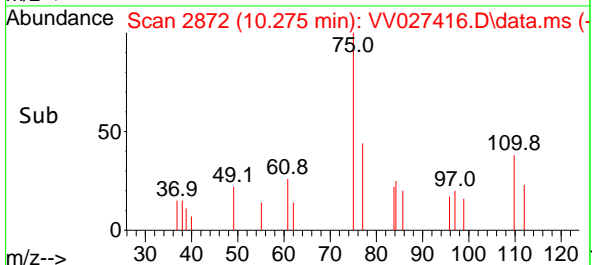


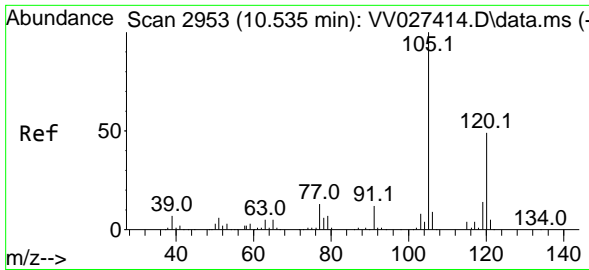
#61
 1,2,3-Trichloropropane
 Concen: 0.267 ug/L
 RT: 10.275 min Scan# 2872
 Delta R.T. 0.003 min
 Lab File: VV027416.D
 Acq: 17 Aug 2022 11:54



Tgt Ion: 75 Resp: 1513

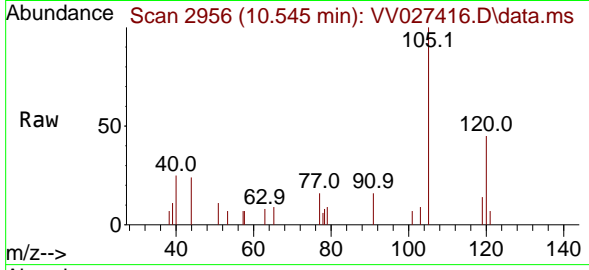
Ion	Ratio	Lower	Upper
75	100		
77	44.6	26.6	39.8
110	38.6	31.0	46.6





#62
 1,3,5-Trimethylbenzene
 Concen: 0.255 ug/L
 RT: 10.545 min Scan# 2953
 Delta R.T. 0.010 min
 Lab File: VV027416.D
 Acq: 17 Aug 2022 11:54

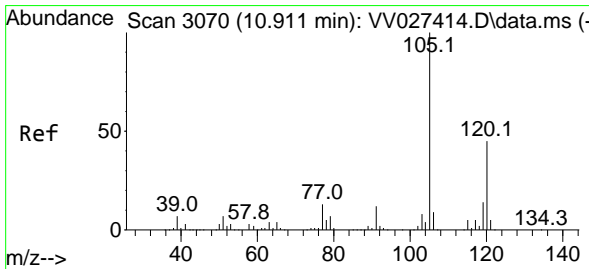
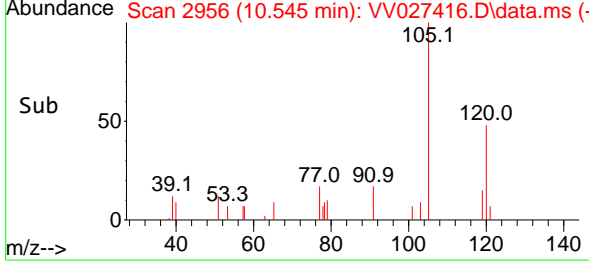
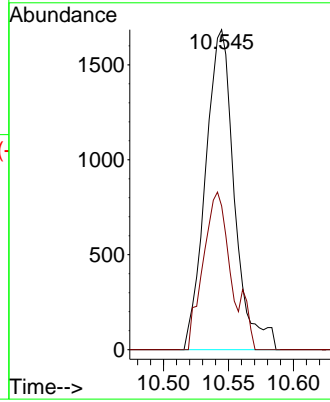
Instrument : MSVOA_V
 Client Sample Id : MDL-WATER-QT3-2022-06



Tgt Ion:105 Resp: 2609
 Ion Ratio Lower Upper
 105 100
 120 43.3 38.2 57.4

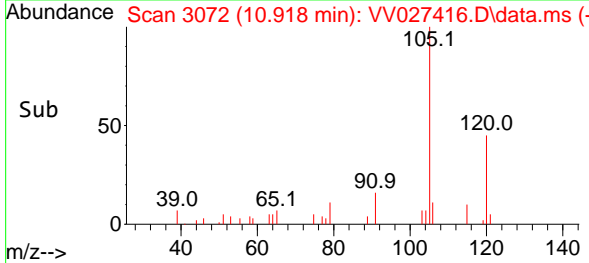
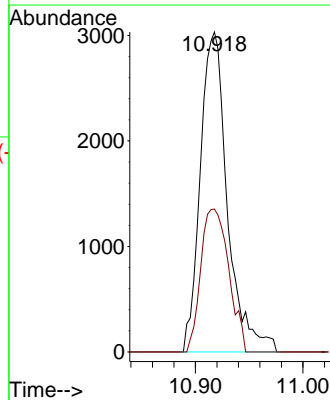
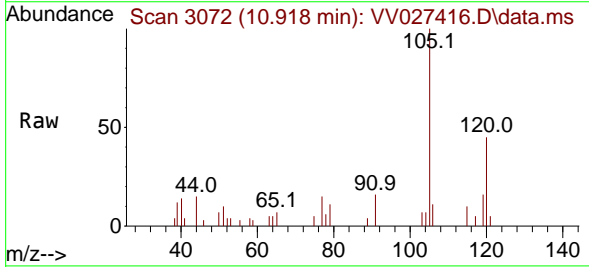
Manual Integrations
APPROVED

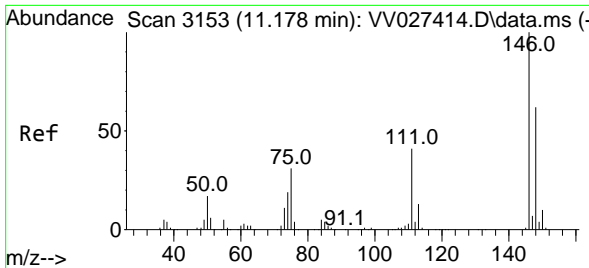
Reviewed By :Mahesh Dadoda 08/19/2022
 Supervised By :Semsettin Yesilyurt 08/22/2022



#63
 1,2,4-Trimethylbenzene
 Concen: 0.181 ug/L
 RT: 10.918 min Scan# 3072
 Delta R.T. 0.006 min
 Lab File: VV027416.D
 Acq: 17 Aug 2022 11:54

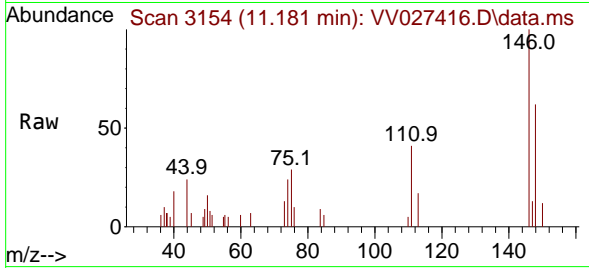
Tgt Ion:105 Resp: 5317
 Ion Ratio Lower Upper
 105 100
 120 45.9 36.2 54.2





#64
 1,3-Dichlorobenzene
 Concen: 0.211 ug/L
 RT: 11.181 min Scan# 3154
 Delta R.T. 0.003 min
 Lab File: VV027416.D
 Acq: 17 Aug 2022 11:54

Instrument : MSVOA_V
 ClientSampleId : MDL-WATER-QT3-2022-06

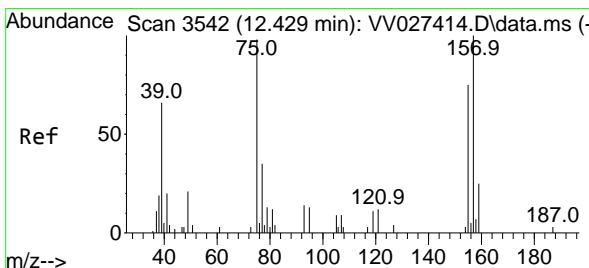
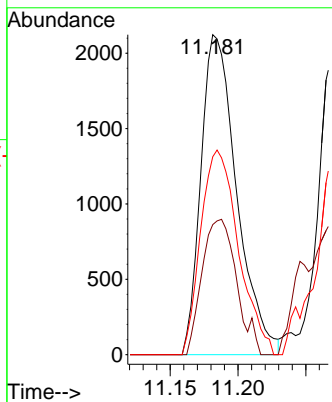
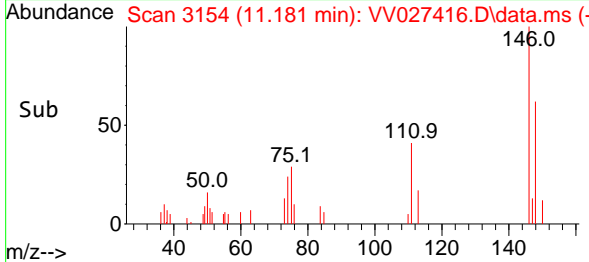


Tgt Ion: 146 Resp: 3898

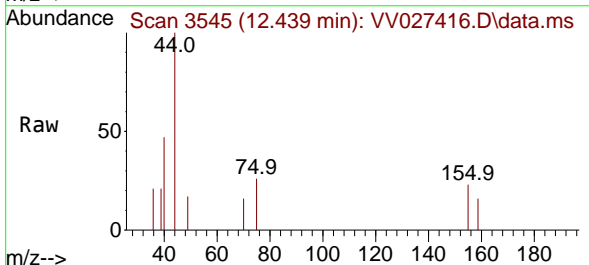
Ion	Ratio	Lower	Upper
146	100		
111	40.7	28.8	53.4
148	61.8	45.4	84.4

Manual Integrations
APPROVED

Reviewed By :Mahesh Dadoda 08/19/2022
 Supervised By :Semsettin Yesilyurt 08/22/2022

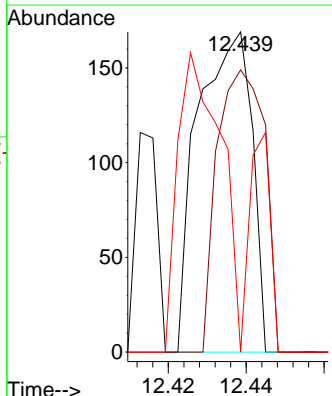
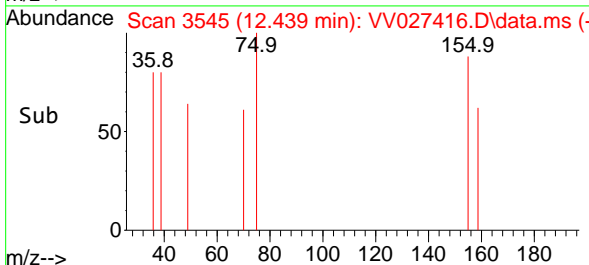


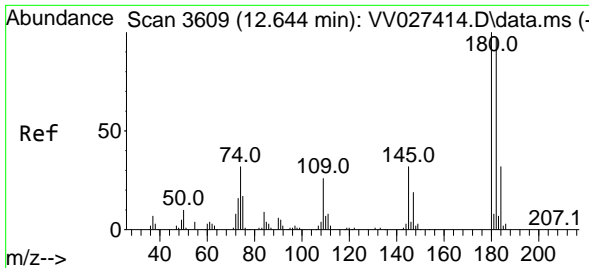
#68
 1,2-Dibromo-3-chloropropane
 Concen: 0.138 ug/L
 RT: 12.439 min Scan# 3545
 Delta R.T. 0.010 min
 Lab File: VV027416.D
 Acq: 17 Aug 2022 11:54



Tgt Ion: 75 Resp: 163

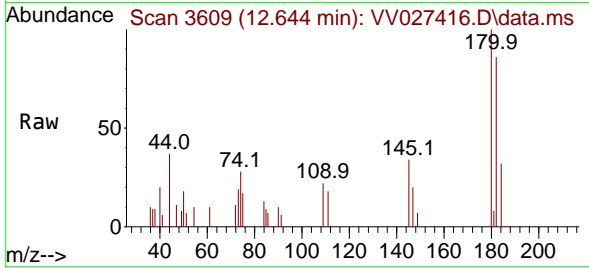
Ion	Ratio	Lower	Upper
75	100		
155	88.2	65.8	98.6
157	0.0	73.0	109.4#





#69
 1,3,5-Trichlorobenzene
 Concen: 0.198 ug/L
 RT: 12.644 min Scan# 3000
 Delta R.T. -0.000 min
 Lab File: VV027416.D
 Acq: 17 Aug 2022 11:54

Instrument : MSVOA_V
 Client Sample Id : MDL-WATER-QT3-2022-06

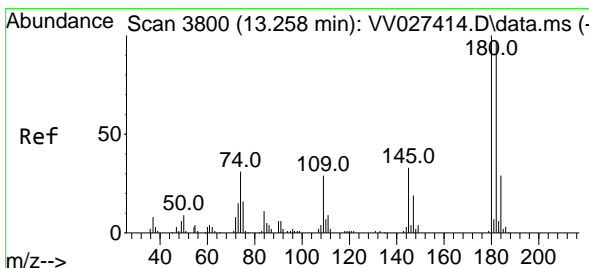
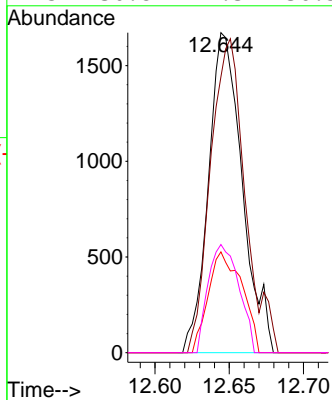
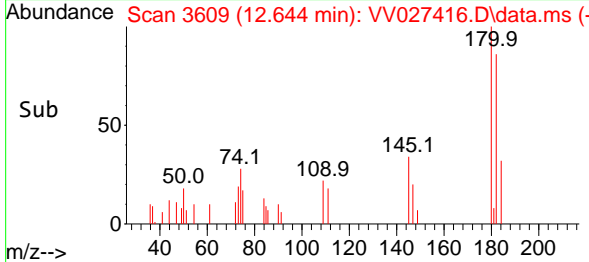


Tgt Ion:180 Resp: 264

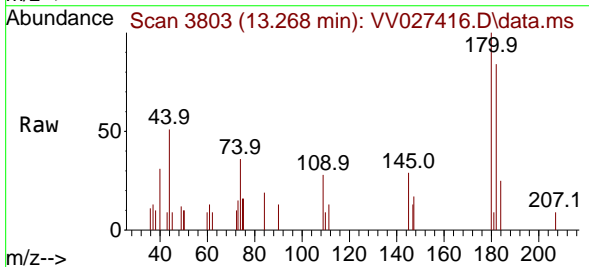
Ion	Ratio	Lower	Upper
180	100		
182	100.2	74.7	112.1
184	31.5	23.3	34.9
145	30.8	24.3	36.5

Manual Integrations
APPROVED

Reviewed By :Mahesh Dadoda 08/19/2022
 Supervised By :Semsettin Yesilyurt 08/22/2022

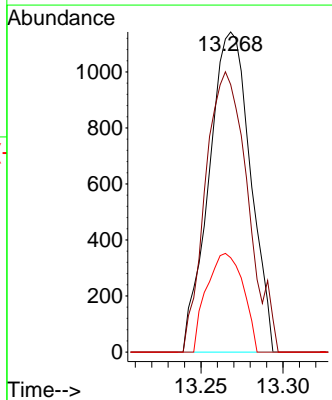
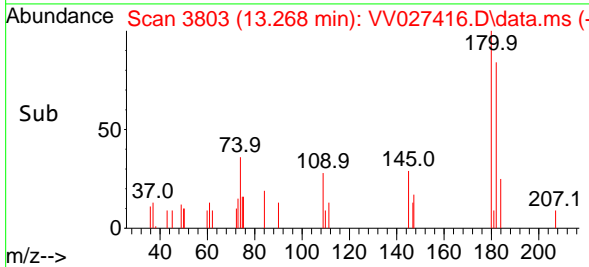


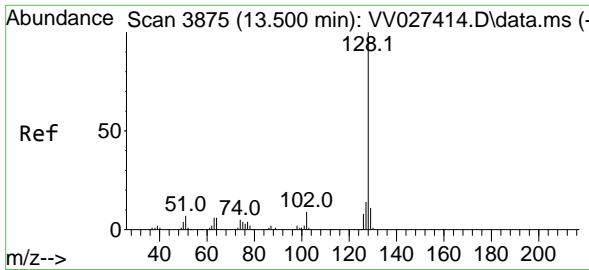
#70
 1,2,4-trichlorobenzene
 Concen: 0.201 ug/L
 RT: 13.268 min Scan# 3803
 Delta R.T. 0.010 min
 Lab File: VV027416.D
 Acq: 17 Aug 2022 11:54



Tgt Ion:180 Resp: 2004

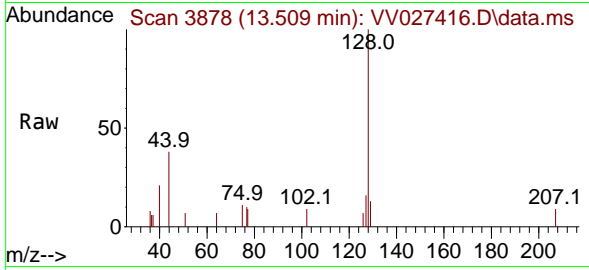
Ion	Ratio	Lower	Upper
180	100		
182	89.3	77.4	116.0
145	27.1	24.9	37.3





#71
 Naphthalene
 Concen: 0.182 ug/L
 RT: 13.509 min Scan# 3878
 Delta R.T. 0.010 min
 Lab File: VV027416.D
 Acq: 17 Aug 2022 11:54

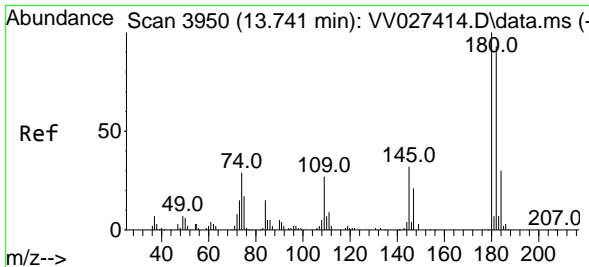
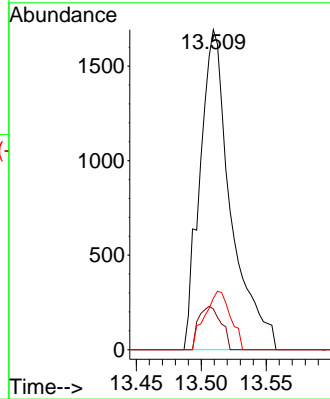
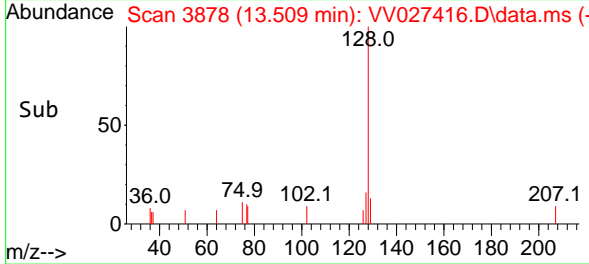
Instrument : MSVOA_V
 ClientSampleId : MDL-WATER-QT3-2022-06



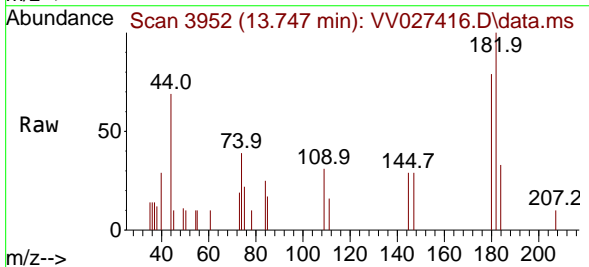
Tgt Ion:128 Resp: 2790
 Ion Ratio Lower Upper
 128 100
 129 9.8 9.0 13.4
 127 15.2 10.6 15.8

Manual Integrations
 APPROVED

Reviewed By :Mahesh Dadoda 08/19/2022
 Supervised By :Semsettin Yesilyurt 08/22/2022



#72
 1,2,3-Trichlorobenzene
 Concen: 0.164 ug/L
 RT: 13.747 min Scan# 3952
 Delta R.T. 0.006 min
 Lab File: VV027416.D
 Acq: 17 Aug 2022 11:54



Tgt Ion:180 Resp: 1523
 Ion Ratio Lower Upper
 180 100
 182 111.2 73.8 110.6#
 145 20.5 27.0 40.4#

