

Data Path : Z:\voasrv\HPCHEM1\MSVOA_V\Data\VW091922\
 Data File : VW027941.D
 Acq On : 19 Sep 2022 21:53
 Operator : SY/MD
 Sample : N4658-07
 Misc : 25.0mL/MSVOA_V/WATER
 ALS Vial : 16 Sample Multiplier: 1

Instrument :
 MSVOA_V
 ClientSampleId :
 C0E90

Quant Time: Sep 20 02:10:58 2022
 Quant Method : Z:\voasrv\HPCHEM1\MSVOA_V\Method\SFAMVTR091922WMA.M
 Quant Title : TRACE VOA SFAM1.0
 QLast Update : Tue Sep 20 01:54:53 2022
 Response via : Initial Calibration

Compound	R.T.	QIon	Response	Conc	Units	Dev(Min)

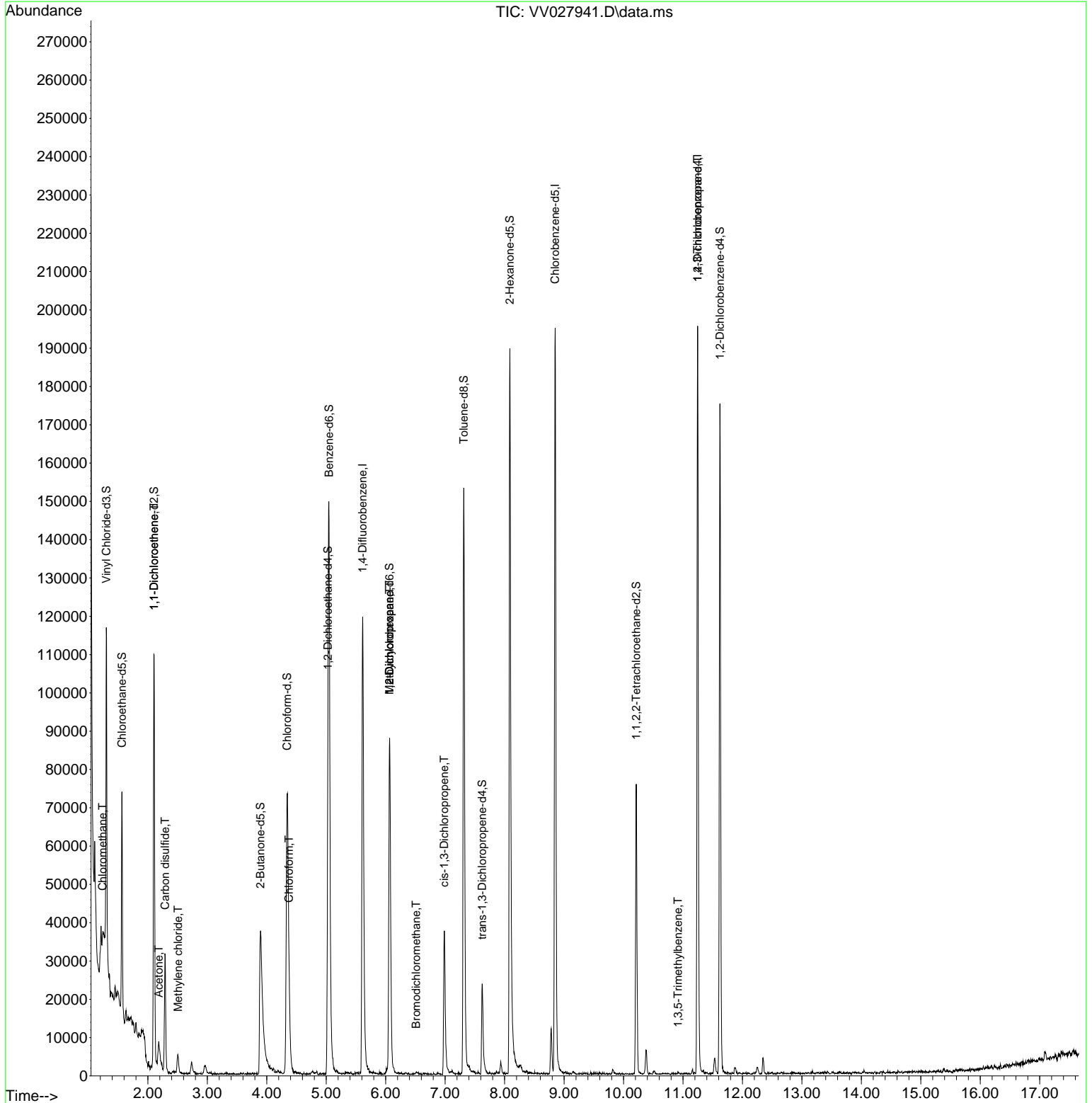
Internal Standards						
1) 1,4-Difluorobenzene	5.612	114	111650	5.000	ug/L	0.00
28) Chlorobenzene-d5	8.850	117	117678	5.000	ug/L	0.00
58) 1,4-Dichlorobenzene-d4	11.246	152	55049	5.000	ug/L	0.00
System Monitoring Compounds						
4) Vinyl Chloride-d3	1.301	65	44209	5.071	ug/L	0.00
Spiked Amount	5.000	Range 40 - 130	Recovery	=	101.400%	
7) Chloroethane-d5	1.564	69	39046	5.091	ug/L	0.00
Spiked Amount	5.000	Range 65 - 130	Recovery	=	101.800%	
11) 1,1-Dichloroethene-d2	2.101	63	54025	3.748	ug/L	0.00
Spiked Amount	5.000	Range 60 - 125	Recovery	=	75.000%	
20) 2-Butanone-d5	3.892	46	81036	58.174	ug/L	0.00
Spiked Amount	50.000	Range 40 - 130	Recovery	=	116.340%	
24) Chloroform-d	4.342	84	76947	5.272	ug/L	0.00
Spiked Amount	5.000	Range 70 - 125	Recovery	=	105.400%	
26) 1,2-Dichloroethane-d4	5.027	65	34124	5.650	ug/L	0.00
Spiked Amount	5.000	Range 70 - 130	Recovery	=	113.000%	
32) Benzene-d6	5.047	84	141966	5.087	ug/L	0.00
Spiked Amount	5.000	Range 70 - 125	Recovery	=	101.800%	
36) 1,2-Dichloropropane-d6	6.066	67	47072	5.138	ug/L	0.00
Spiked Amount	5.000	Range 60 - 140	Recovery	=	102.800%	
41) Toluene-d8	7.313	98	109116	4.356	ug/L	0.00
Spiked Amount	5.000	Range 70 - 130	Recovery	=	87.200%	
43) trans-1,3-Dichloroprop...	7.622	79	14757	4.864	ug/L	0.00
Spiked Amount	5.000	Range 55 - 130	Recovery	=	97.200%	
46) 2-Hexanone-d5	8.088	63	70976	52.977	ug/L	0.00
Spiked Amount	50.000	Range 45 - 130	Recovery	=	105.960%	
56) 1,1,2,2-Tetrachloroeth...	10.214	84	38133	5.089	ug/L	0.00
Spiked Amount	5.000	Range 65 - 120	Recovery	=	101.800%	
66) 1,2-Dichlorobenzene-d4	11.622	152	47790	5.578	ug/L	0.00
Spiked Amount	5.000	Range 80 - 120	Recovery	=	111.600%	
Target Compounds						
						Qvalue
3) Chloromethane	1.236	50	1995	0.207	ug/L	98
12) 1,1-Dichloroethene	2.101	96	657	0.081	ug/L #	1
13) Acetone	2.182	43	12564	11.355	ug/L	96
14) Carbon disulfide	2.288	76	35035	2.186	ug/L	95
16) Methylene chloride	2.506	84	2147	0.243	ug/L	92
25) Chloroform	4.371	83	15255	0.980	ug/L	96
35) Methylcyclohexane	6.066	83	10797	0.959	ug/L #	21
37) 1,2-Dichloropropane	6.066	63	4848	0.570	ug/L #	85
38) Bromodichloromethane	6.513	83	504	0.046	ug/L #	89
39) cis-1,3-Dichloropropene	6.985	75	1223	0.113	ug/L #	74
61) 1,2,3-Trichloropropane	11.246	75	6075	1.506	ug/L #	63
62) 1,3,5-Trimethylbenzene	10.914	105	251	0.030	ug/L	98

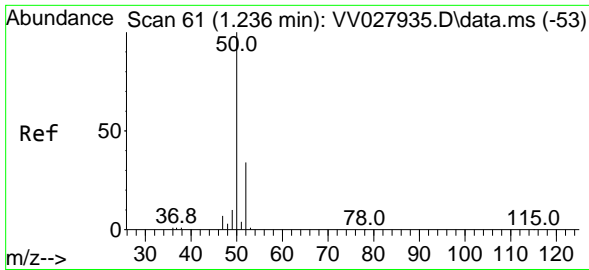
(#) = qualifier out of range (m) = manual integration (+) = signals summed

Data Path : Z:\voasrv\HPCHEM1\MSVOA_V\Data\VV091922\
 Data File : VV027941.D
 Acq On : 19 Sep 2022 21:53
 Operator : SY/MD
 Sample : N4658-07
 Misc : 25.0mL/MSVOA_V/WATER
 ALS Vial : 16 Sample Multiplier: 1

Instrument :
 MSVOA_V
 ClientSampleId :
 C0E90

Quant Time: Sep 20 02:10:58 2022
 Quant Method : Z:\voasrv\HPCHEM1\MSVOA_V\Method\SFAMVTR091922WMA.M
 Quant Title : TRACE VOA SFAM1.0
 QLast Update : Tue Sep 20 01:54:53 2022
 Response via : Initial Calibration

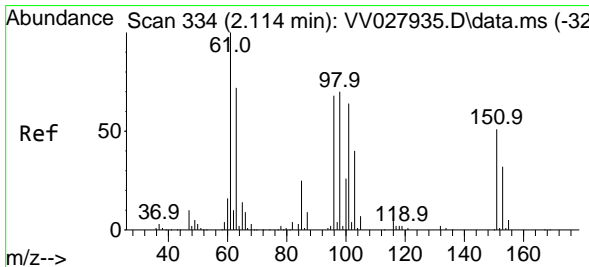
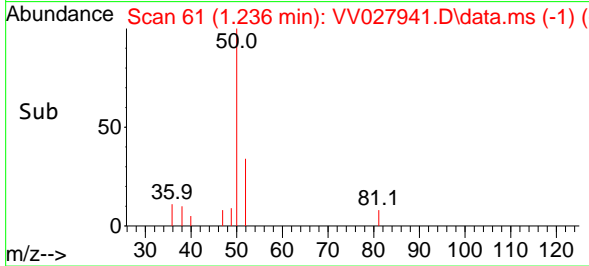
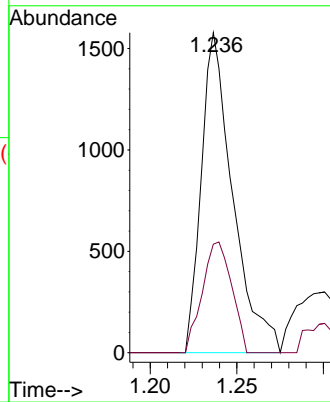
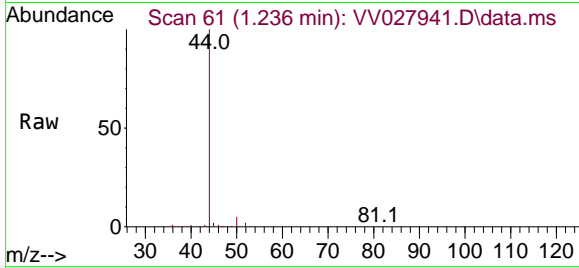




#3
 Chloromethane
 Concen: 0.207 ug/L
 RT: 1.236 min Scan# 61
 Delta R.T. -0.000 min
 Lab File: VV027941.D
 Acq: 19 Sep 2022 21:53

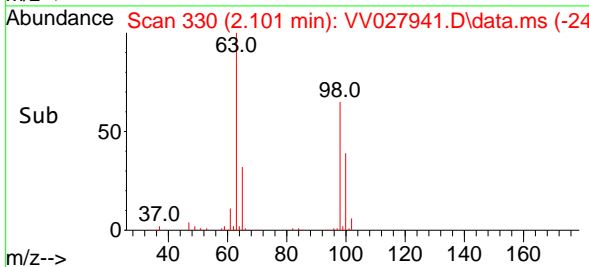
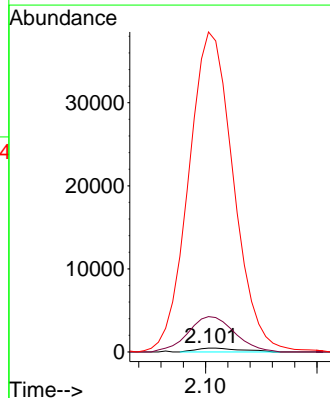
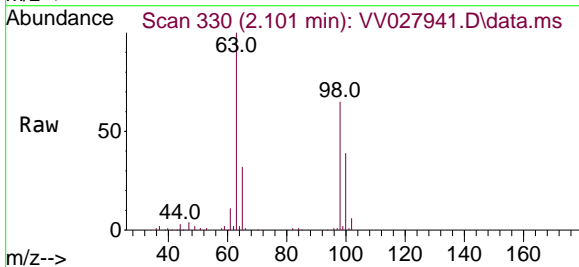
Instrument : MSVOA_V
 ClientSampleId : C0E90

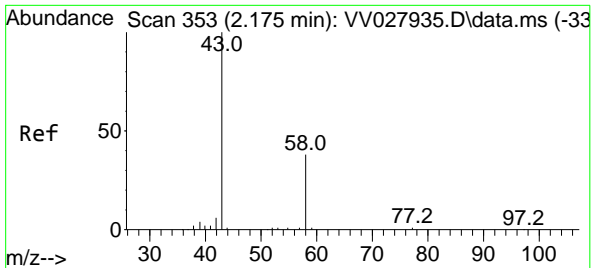
Tgt Ion: 50 Resp: 1995
 Ion Ratio Lower Upper
 50 100
 52 33.9 23.0 42.8



#12
 1,1-Dichloroethene
 Concen: 0.081 ug/L
 RT: 2.101 min Scan# 330
 Delta R.T. -0.013 min
 Lab File: VV027941.D
 Acq: 19 Sep 2022 21:53

Tgt Ion: 96 Resp: 657
 Ion Ratio Lower Upper
 96 100
 61 906.8 106.2 197.2#
 63 8213.2 85.0 158.0#



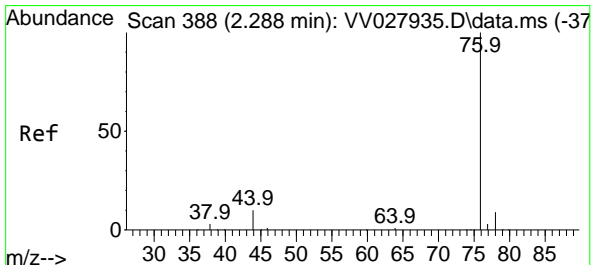
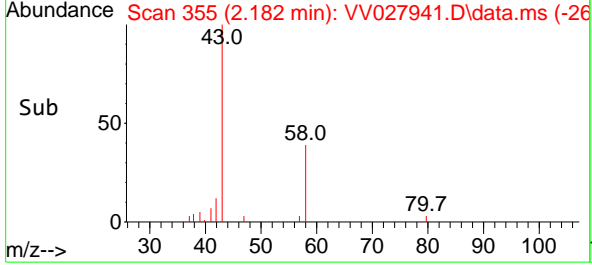
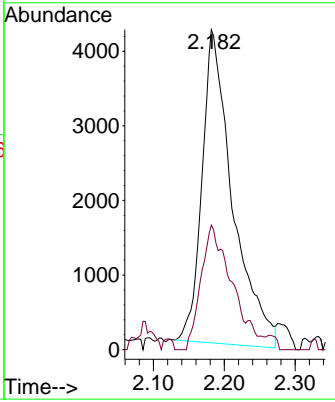
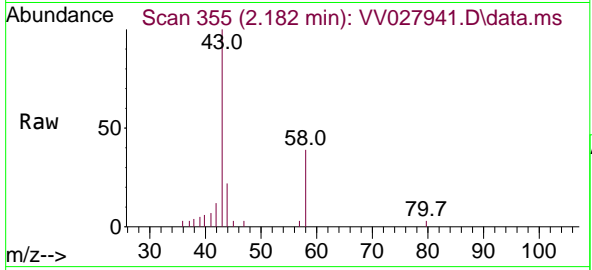


#13
 Acetone
 Concen: 11.355 ug/L
 RT: 2.182 min Scan# 311
 Delta R.T. 0.006 min
 Lab File: VV027941.D
 Acq: 19 Sep 2022 21:53

Instrument : MSVOA_V
 ClientSampleId : C0E90

Tgt Ion: 43 Resp: 12564

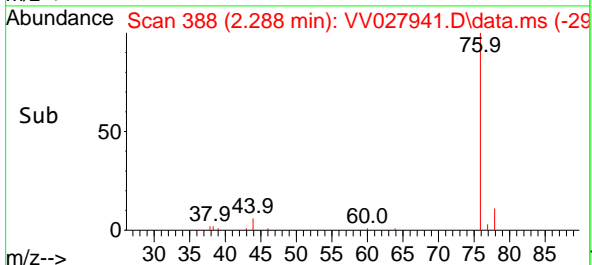
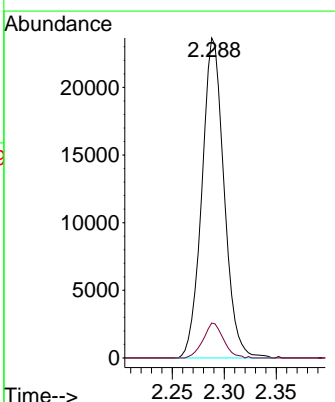
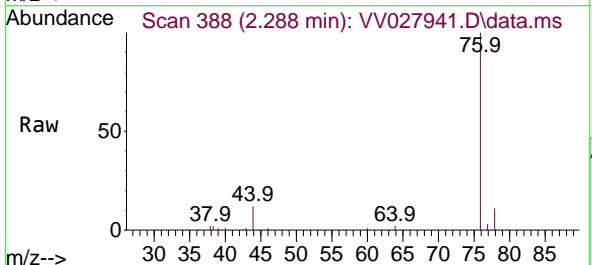
Ion	Ratio	Lower	Upper
43	100		
58	37.3	0.0	79.8

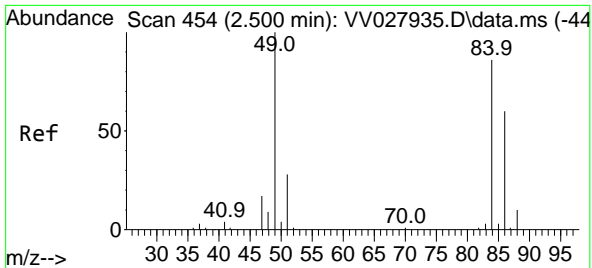


#14
 Carbon disulfide
 Concen: 2.186 ug/L
 RT: 2.288 min Scan# 388
 Delta R.T. -0.000 min
 Lab File: VV027941.D
 Acq: 19 Sep 2022 21:53

Tgt Ion: 76 Resp: 35035

Ion	Ratio	Lower	Upper
76	100		
78	10.9	7.3	10.9



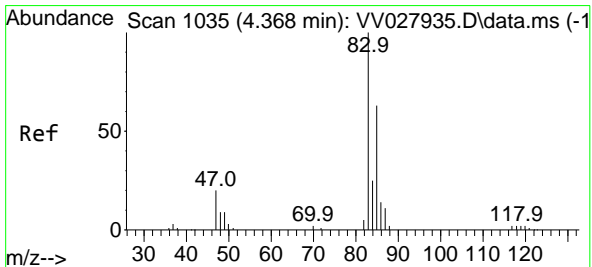
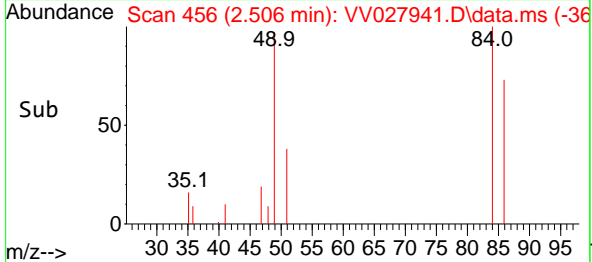
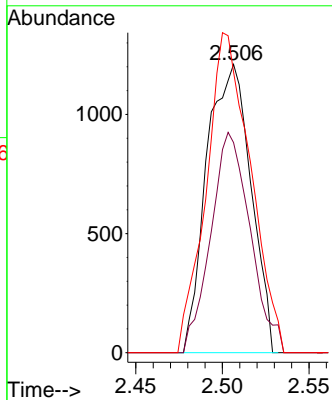
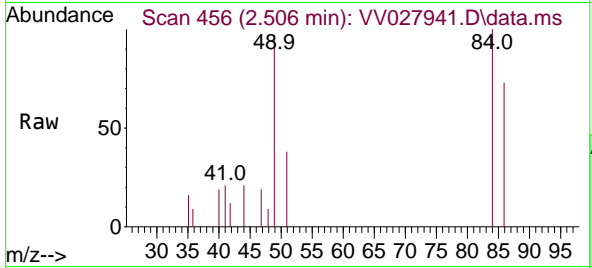


#16
 Methylene chloride
 Concen: 0.243 ug/L
 RT: 2.506 min Scan# 41
 Delta R.T. 0.006 min
 Lab File: VV027941.D
 Acq: 19 Sep 2022 21:53

Instrument :
 MSVOA_V
 ClientSampleId :
 C0E90

Tgt Ion: 84 Resp: 2147

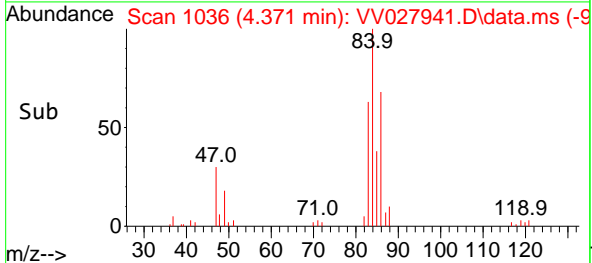
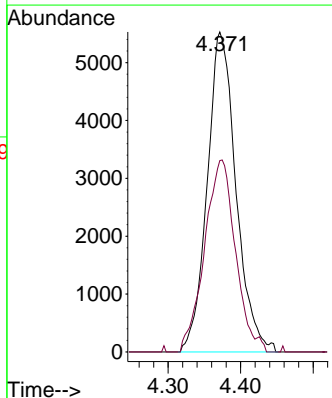
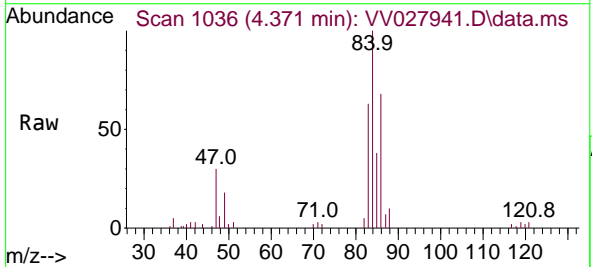
Ion	Ratio	Lower	Upper
84	100		
86	72.9	42.4	78.6
49	97.4	70.7	131.3

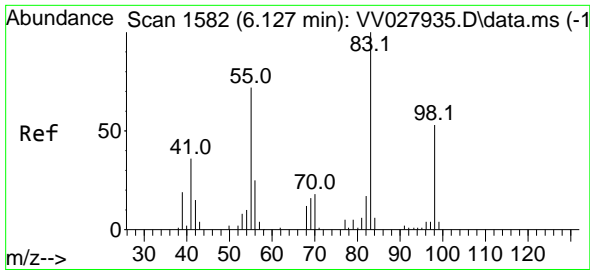


#25
 Chloroform
 Concen: 0.980 ug/L
 RT: 4.371 min Scan# 1036
 Delta R.T. 0.003 min
 Lab File: VV027941.D
 Acq: 19 Sep 2022 21:53

Tgt Ion: 83 Resp: 15255

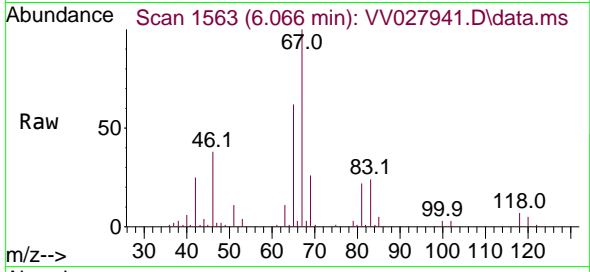
Ion	Ratio	Lower	Upper
83	100		
85	59.8	44.0	81.8



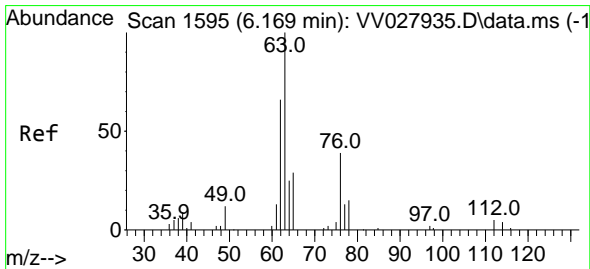
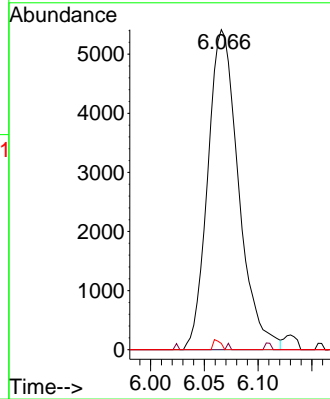
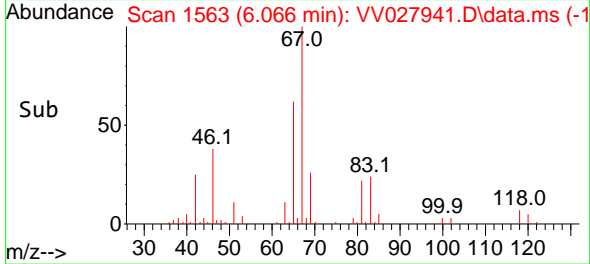


#35
 Methylcyclohexane
 Concen: 0.959 ug/L
 RT: 6.066 min Scan# 1563
 Delta R.T. -0.061 min
 Lab File: VV027941.D
 Acq: 19 Sep 2022 21:53

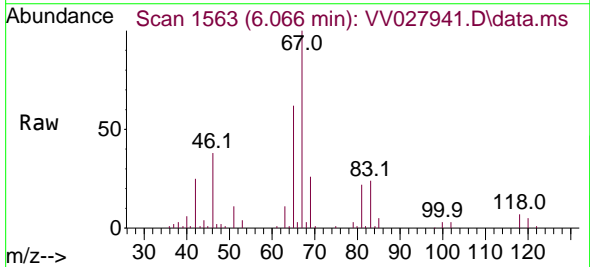
Instrument : MSVOA_V
 ClientSampleId : C0E90



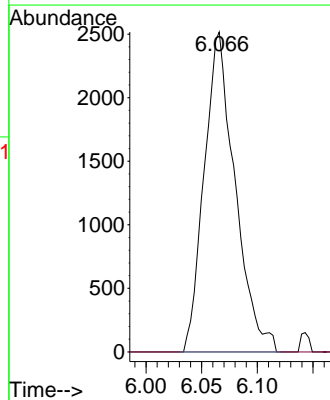
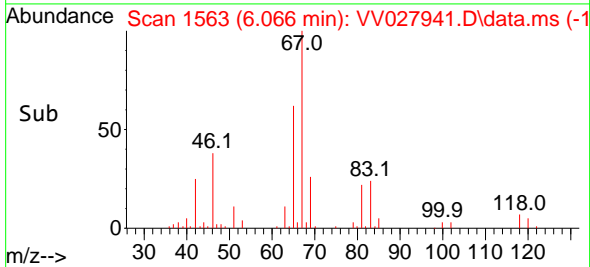
Tgt Ion: 83 Resp: 10797
 Ion Ratio Lower Upper
 83 100
 55 0.2 54.5 81.7#
 98 0.8 39.6 59.4#

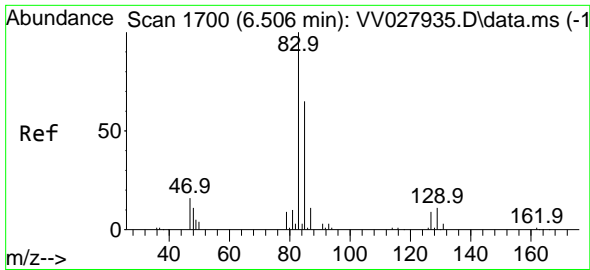


#37
 1,2-Dichloropropane
 Concen: 0.570 ug/L
 RT: 6.066 min Scan# 1563
 Delta R.T. -0.103 min
 Lab File: VV027941.D
 Acq: 19 Sep 2022 21:53



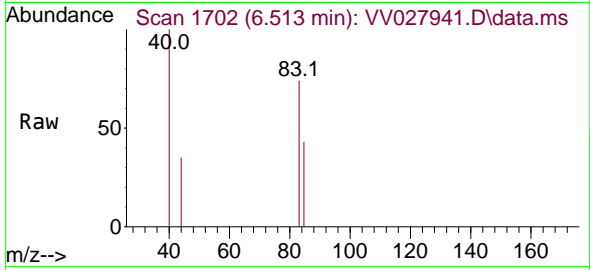
Tgt Ion: 63 Resp: 4848
 Ion Ratio Lower Upper
 63 100
 112 0.0 3.8 5.8#



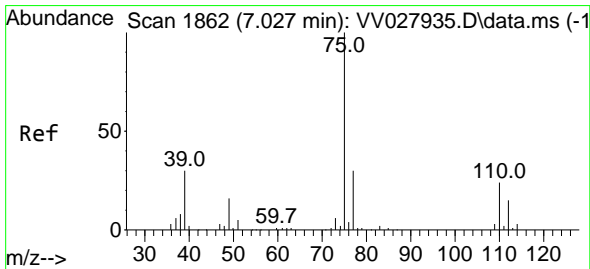
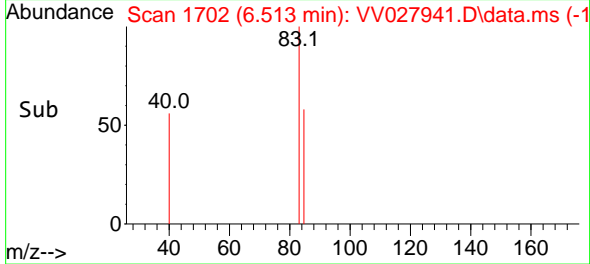
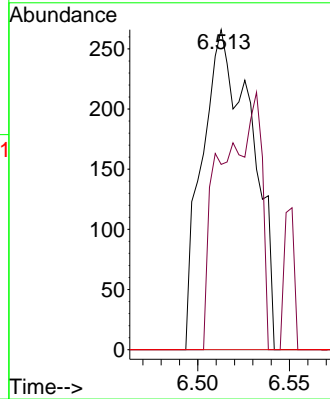


#38
 Bromodichloromethane
 Concen: 0.046 ug/L
 RT: 6.513 min Scan# 11
 Delta R.T. 0.006 min
 Lab File: VV027941.D
 Acq: 19 Sep 2022 21:53

Instrument :
 MSVOA_V
 ClientSampleId :
 C0E90

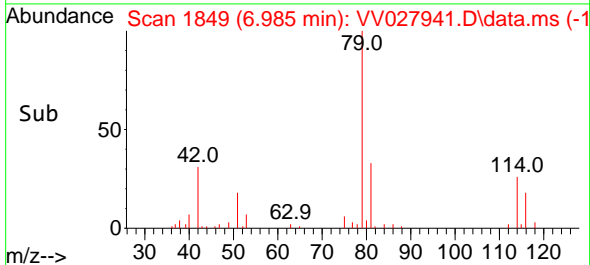
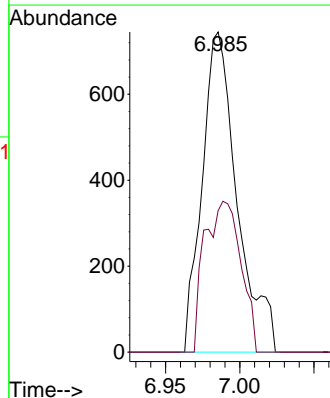
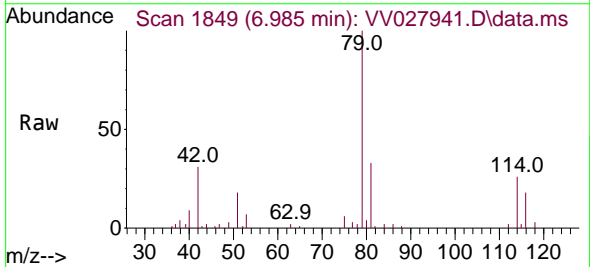


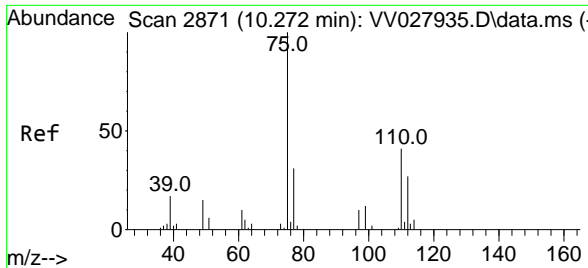
Tgt Ion	Resp	Lower	Upper
83	100		
85	57.9	45.3	84.1
127	0.0	7.9	11.9#



#39
 cis-1,3-Dichloropropene
 Concen: 0.113 ug/L
 RT: 6.985 min Scan# 1849
 Delta R.T. -0.042 min
 Lab File: VV027941.D
 Acq: 19 Sep 2022 21:53

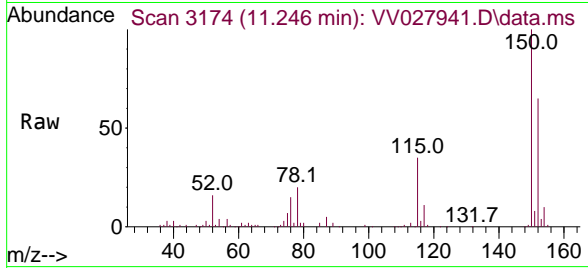
Tgt Ion	Resp	Lower	Upper
75	100		
77	44.2	21.1	39.3#



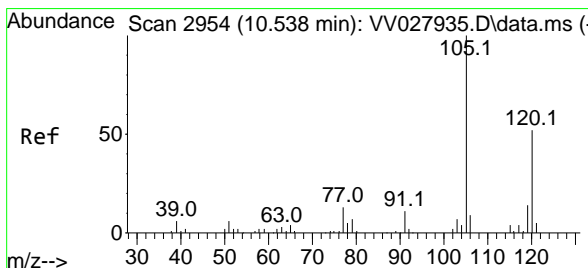
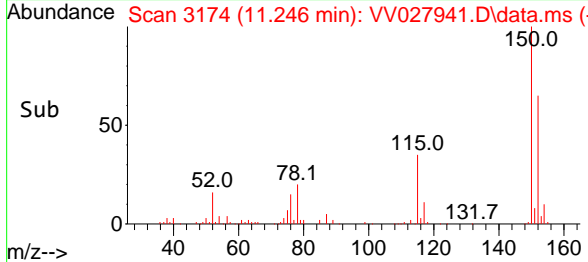
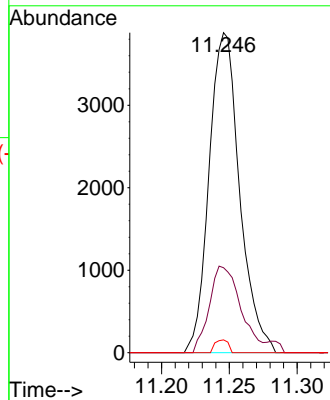


#61
 1,2,3-Trichloropropane
 Concen: 1.506 ug/L
 RT: 11.246 min Scan# 3071
 Delta R.T. 0.974 min
 Lab File: VV027941.D
 Acq: 19 Sep 2022 21:53

Instrument : MSVOA_V
 ClientSampleId : C0E90



Tgt Ion: 75 Resp: 6075
 Ion Ratio Lower Upper
 75 100
 77 27.7 26.1 39.1
 110 1.7 31.3 46.9#



#62
 1,3,5-Trimethylbenzene
 Concen: 0.030 ug/L
 RT: 10.914 min Scan# 3071
 Delta R.T. 0.376 min
 Lab File: VV027941.D
 Acq: 19 Sep 2022 21:53

Tgt Ion: 105 Resp: 251
 Ion Ratio Lower Upper
 105 100
 120 51.8 40.2 60.2

