

Data Path : Z:\voasrv\HPCHEM1\MSVOA_V\Data\VW092022\
 Data File : VW027982.D
 Acq On : 20 Sep 2022 23:22
 Operator : SY/MD
 Sample : N4619-18
 Misc : 5.0mL/MSVOA_V/WATER
 ALS Vial : 28 Sample Multiplier: 1

Instrument :
 MSVOA_V
 ClientSampleId :
 C0E38

Quant Time: Sep 21 05:18:47 2022
 Quant Method : Z:\voasrv\HPCHEM1\MSVOA_V\Method\SFAMVLM092022WMA.M
 Quant Title : VOC Analysis
 QLast Update : Wed Sep 21 01:52:39 2022
 Response via : Initial Calibration

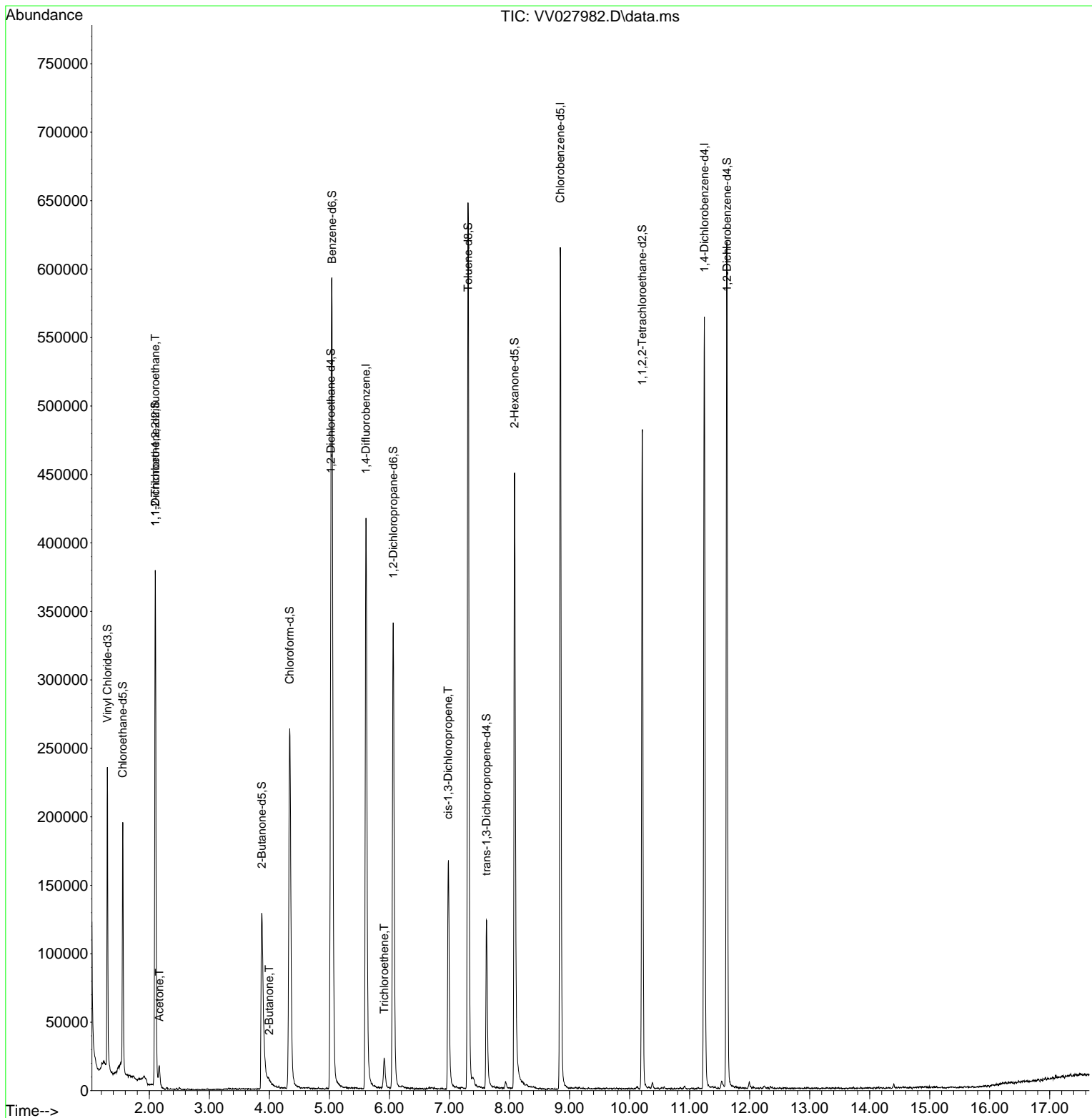
Compound	R.T.	QIon	Response	Conc	Units	Dev(Min)
Internal Standards						
1) 1,4-Difluorobenzene	5.609	114	362055	50.000	ug/L	0.00
28) Chlorobenzene-d5	8.847	117	340667	50.000	ug/L	0.00
58) 1,4-Dichlorobenzene-d4	11.246	152	153403	50.000	ug/L	0.00
System Monitoring Compounds						
4) Vinyl Chloride-d3	1.301	65	141364	44.476	ug/L	0.00
Spiked Amount	50.000	Range 60 - 135	Recovery =	88.960%		
7) Chloroethane-d5	1.558	69	117589	46.312	ug/L	0.00
Spiked Amount	50.000	Range 70 - 130	Recovery =	92.620%		
11) 1,1-Dichloroethene-d2	2.098	63	196953	34.978	ug/L	0.00
Spiked Amount	50.000	Range 60 - 125	Recovery =	69.960%		
21) 2-Butanone-d5	3.873	46	217854	115.265	ug/L	0.00
Spiked Amount	100.000	Range 40 - 130	Recovery =	115.260%		
24) Chloroform-d	4.339	84	260100	48.741	ug/L	0.00
Spiked Amount	50.000	Range 70 - 125	Recovery =	97.480%		
26) 1,2-Dichloroethane-d4	5.024	65	176225	50.958	ug/L	0.00
Spiked Amount	50.000	Range 70 - 125	Recovery =	101.920%		
32) Benzene-d6	5.043	84	509645	51.904	ug/L	0.00
Spiked Amount	50.000	Range 70 - 125	Recovery =	103.800%		
36) 1,2-Dichloropropane-d6	6.063	67	167327	55.186	ug/L	0.00
Spiked Amount	50.000	Range 70 - 120	Recovery =	110.380%		
41) Toluene-d8	7.310	98	425430	47.314	ug/L	0.00
Spiked Amount	50.000	Range 80 - 120	Recovery =	94.620%		
43) trans-1,3-Dichloroprop...	7.616	79	71837	47.379	ug/L	0.00
Spiked Amount	50.000	Range 60 - 125	Recovery =	94.760%		
47) 2-Hexanone-d5	8.085	63	158280	106.560	ug/L	0.00
Spiked Amount	100.000	Range 45 - 130	Recovery =	106.560%		
56) 1,1,2,2-Tetrachloroeth...	10.214	84	232412	52.078	ug/L	0.00
Spiked Amount	50.000	Range 65 - 120	Recovery =	104.160%		
66) 1,2-Dichlorobenzene-d4	11.622	152	159879	53.689	ug/L	0.00
Spiked Amount	50.000	Range 80 - 120	Recovery =	107.380%		
Target Compounds						
10) 1,1,2-Trichloro-1,2,2-...	2.098	101	1953	0.743	ug/L #	23
13) Acetone	2.166	43	14443	8.575	ug/L	98
22) 2-Butanone	3.995	43	4336	2.162	ug/L	77
34) Trichloroethene	5.912	95	7422	2.947	ug/L	96
39) cis-1,3-Dichloropropene	6.979	75	4106	1.017	ug/L #	66

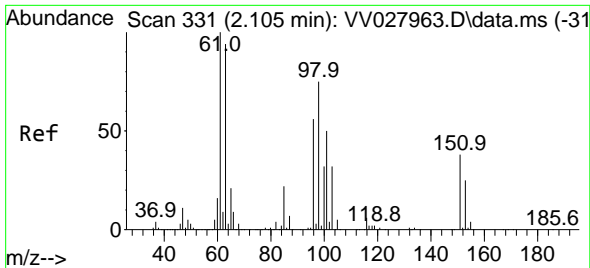
(#) = qualifier out of range (m) = manual integration (+) = signals summed

Data Path : Z:\voasrv\HPCHEM1\MSVOA_V\Data\VV092022\
 Data File : VV027982.D
 Acq On : 20 Sep 2022 23:22
 Operator : SY/MD
 Sample : N4619-18
 Misc : 5.0mL/MSVOA_V/WATER
 ALS Vial : 28 Sample Multiplier: 1

Instrument :
 MSVOA_V
 ClientSampleId :
 C0E38

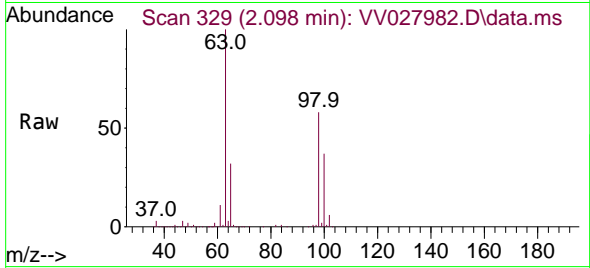
Quant Time: Sep 21 05:18:47 2022
 Quant Method : Z:\voasrv\HPCHEM1\MSVOA_V\Method\SFAMVLM092022WMA.M
 Quant Title : VOC Analysis
 QLast Update : Wed Sep 21 01:52:39 2022
 Response via : Initial Calibration





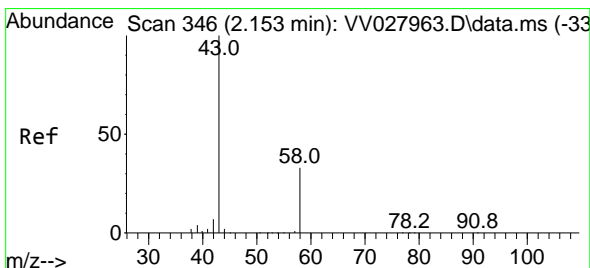
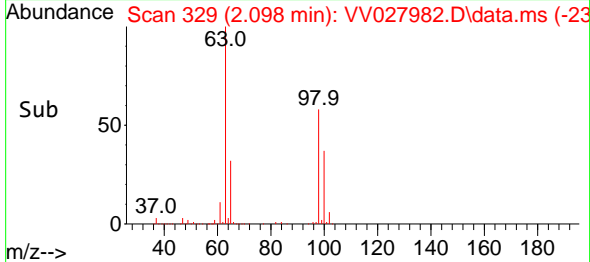
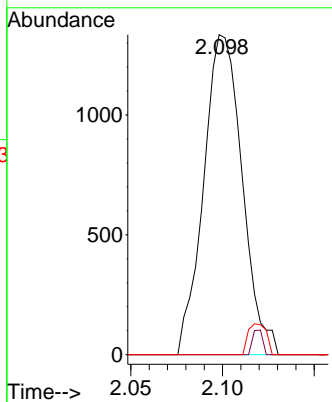
#10
 1,1,2-Trichloro-1,2,2-trifluoroethane
 Concen: 0.743 ug/L
 RT: 2.098 min Scan# 31
 Delta R.T. -0.007 min
 Lab File: VV027982.D
 Acq: 20 Sep 2022 23:22

Instrument :
 MSVOA_V
 ClientSampleId :
 C0E38



Tgt Ion: 101 Resp: 1953

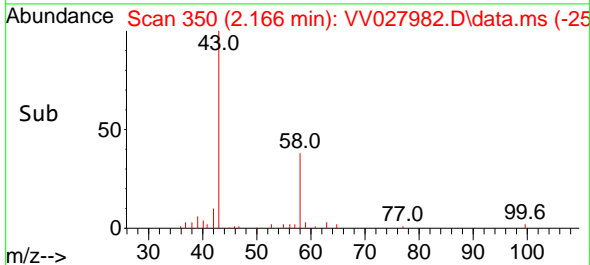
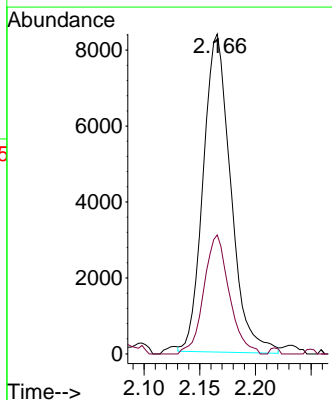
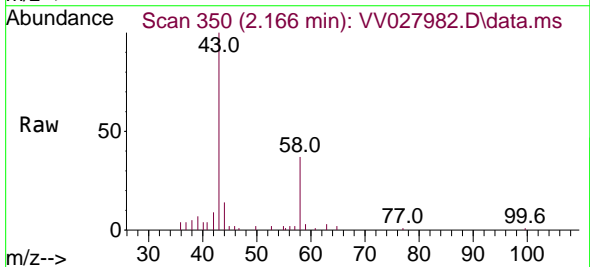
Ion	Ratio	Lower	Upper
101	100		
85	2.0	35.6	53.4#
151	4.6	62.2	93.4#

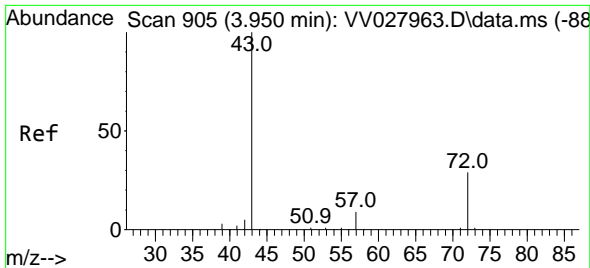


#13
 Acetone
 Concen: 8.575 ug/L
 RT: 2.166 min Scan# 350
 Delta R.T. 0.013 min
 Lab File: VV027982.D
 Acq: 20 Sep 2022 23:22

Tgt Ion: 43 Resp: 14443

Ion	Ratio	Lower	Upper
43	100		
58	34.4	0.0	66.2

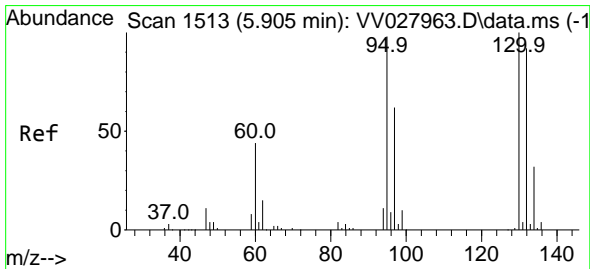
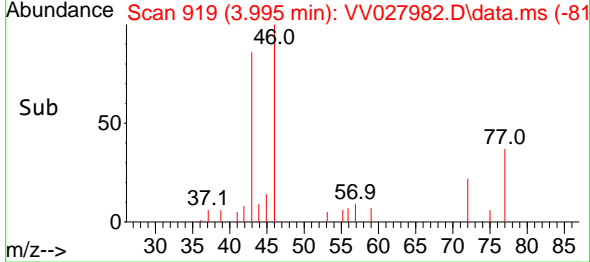
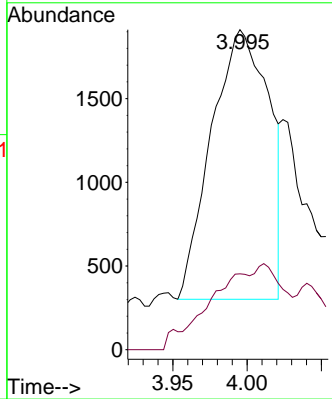
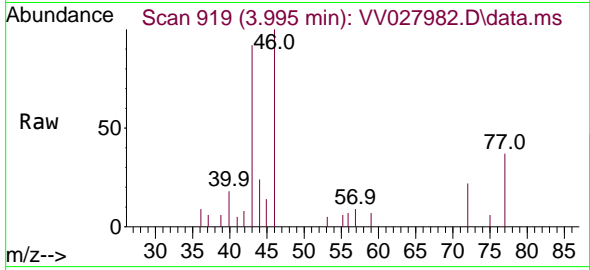




#22
 2-Butanone
 Concen: 2.162 ug/L
 RT: 3.995 min Scan# 919
 Delta R.T. 0.045 min
 Lab File: VV027982.D
 Acq: 20 Sep 2022 23:22

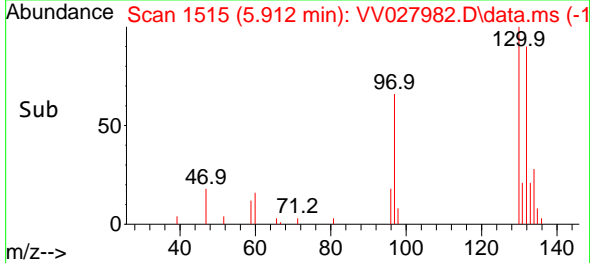
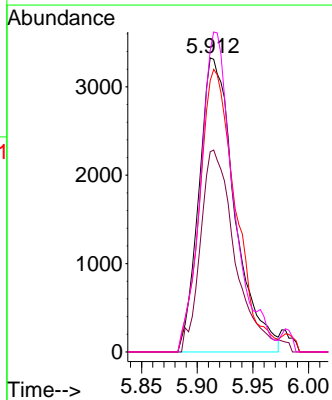
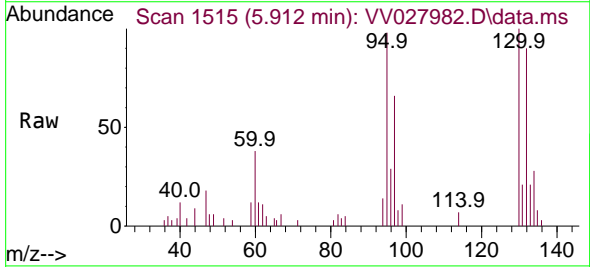
Instrument : MSVOA_V
 ClientSampleId : C0E38

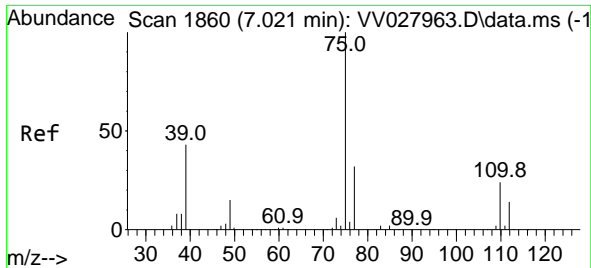
Tgt Ion: 43 Resp: 4336
 Ion Ratio Lower Upper
 43 100
 72 14.8 13.5 40.4



#34
 Trichloroethene
 Concen: 2.947 ug/L
 RT: 5.912 min Scan# 1515
 Delta R.T. 0.006 min
 Lab File: VV027982.D
 Acq: 20 Sep 2022 23:22

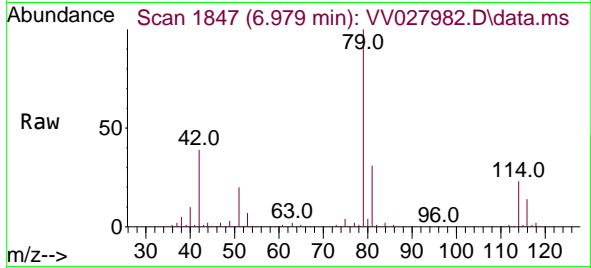
Tgt Ion: 95 Resp: 7422
 Ion Ratio Lower Upper
 95 100
 97 68.1 45.4 84.2
 132 92.3 69.2 128.6
 130 102.5 71.1 132.1





#39
 cis-1,3-Dichloropropene
 Concen: 1.017 ug/L
 RT: 6.979 min Scan# 1847
 Delta R.T. -0.042 min
 Lab File: VV027982.D
 Acq: 20 Sep 2022 23:22

Instrument :
 MSVOA_V
 ClientSampleId :
 C0E38



Tgt Ion: 75 Resp: 4106
 Ion Ratio Lower Upper
 75 100
 77 51.2 22.6 42.0#

