

Data Path : Z:\voasrv\HPCHEM1\MSVOA_V\Data\VV092022\
 Data File : VV027997.D
 Acq On : 21 Sep 2022 05:57
 Operator : SY/MD
 Sample : N4674-10
 Misc : 5.0mL/MSVOA_V/WATER
 ALS Vial : 44 Sample Multiplier: 1

Instrument :
 MSVOA_V
 ClientSampleId :
 COEA9

Integration Parameters: LSCINT.P

Integrator: RTE
 Smoothing : OFF
 Sampling : 1
 Start Thrs : 0.2
 Stop Thrs : 0

Filtering: 5
 Min Area: 0 % of largest Peak
 Max Peaks: 100
 Peak Location: TOP

If leading or trailing edge < 100 prefer < Baseline drop else tangent >
 Peak separation: 5

Method : Z:\voasrv\HPCHEM1\MSVOA_V\Method\SFAMVLM092022WMA.M
 Title : VOC Analysis

Signal : TIC: VV027997.D\data.ms

peak #	R.T. min	first scan	max scan	last scan	PK TY	peak height	corr. area	corr. % max.	% of total
1	1.301	76	81	102	rVB	212466	226313	15.81%	2.061%
2	1.561	156	162	172	rVB	177276	190546	13.31%	1.736%
3	2.101	320	330	345	rBV2	376026	575887	40.24%	5.246%
4	2.375	412	415	418	rBV4	959	683	0.05%	0.006%
5	2.712	518	520	521	rBV2	707	295	0.02%	0.003%
6	2.748	528	531	532	rBV3	816	363	0.03%	0.003%
7	2.818	551	553	556	rVB3	763	316	0.02%	0.003%
8	2.860	564	566	570	rVB3	514	268	0.02%	0.002%
9	2.899	576	578	580	rBV2	735	357	0.02%	0.003%
10	2.934	587	589	591	rBV3	459	316	0.02%	0.003%
11	3.024	614	617	622	rBV5	618	624	0.04%	0.006%
12	3.088	635	637	642	rVB3	584	430	0.03%	0.004%
13	3.111	642	644	650	rBV3	799	755	0.05%	0.007%
14	3.281	695	697	698	rVV2	618	250	0.02%	0.002%
15	3.378	722	727	732	rBV4	918	991	0.07%	0.009%
16	3.404	732	735	737	rVV4	456	265	0.02%	0.002%
17	3.455	749	751	755	rVB3	658	409	0.03%	0.004%
18	3.519	768	771	772	rBV2	549	320	0.02%	0.003%
19	3.558	780	783	788	rBV2	713	600	0.04%	0.005%
20	3.619	800	802	805	rBV3	755	420	0.03%	0.004%
21	3.642	805	809	811	rVV4	651	440	0.03%	0.004%
22	3.687	820	823	827	rVB3	698	524	0.04%	0.005%
23	3.712	827	831	832	rBV	768	444	0.03%	0.004%
24	3.757	843	845	849	rVB3	848	620	0.04%	0.006%
25	3.879	873	883	917	rBV	122861	409280	28.60%	3.728%
26	4.339	1011	1026	1048	rBV	239331	597132	41.72%	5.439%
27	4.738	1143	1150	1154	rBV3	939	848	0.06%	0.008%
28	4.773	1159	1161	1164	rVB2	512	277	0.02%	0.003%
29	4.841	1180	1182	1185	rBV3	427	285	0.02%	0.003%
30	4.873	1190	1192	1197	rBV3	350	354	0.02%	0.003%
31	5.040	1226	1244	1272	rBV2	558222	1431182	100.00%	13.036%
32	5.371	1344	1347	1350	rVB3	1097	738	0.05%	0.007%
33	5.394	1350	1354	1356	rBV2	484	384	0.03%	0.003%
34	5.609	1410	1421	1446	rBV	403843	825295	57.67%	7.517%
35	5.912	1504	1515	1529	rBV10	8534	19391	1.35%	0.177%
36	6.005	1542	1544	1547	rBV2	797	536	0.04%	0.005%

Data Path : Z:\voasrv\HPCHEM1\MSVOA_V\Data\VW092022\
 Data File : VW027997.D
 Acq On : 21 Sep 2022 05:57
 Operator : SY/MD
 Sample : N4674-10
 Misc : 5.0mL/MSVOA_V/WATER
 ALS Vial : 44 Sample Multiplier: 1

Instrument :
 MSVOA_V
 ClientSampleId :
 C0EA9

Integration Parameters: LSCINT.P

Integrator: RTE
 Smoothing : OFF
 Sampling : 1
 Start Thrs : 0.2
 Stop Thrs : 0

Filtering: 5
 Min Area: 0 % of largest Peak
 Max Peaks: 100
 Peak Location: TOP

If leading or trailing edge < 100 prefer < Baseline drop else tangent >
 Peak separation: 5

Method : Z:\voasrv\HPCHEM1\MSVOA_V\Method\SFAMVLM092022WMA.M
 Title : VOC Analysis

37	6.063	1550	1562	1591	rVV	331357	683999	47.79%	6.230%
38	6.323	1641	1643	1646	rBV4	681	378	0.03%	0.003%
39	6.465	1685	1687	1689	rBV2	785	300	0.02%	0.003%
40	6.506	1697	1700	1703	rBV3	619	361	0.03%	0.003%
41	6.564	1713	1718	1722	rBV4	732	778	0.05%	0.007%
42	6.609	1729	1732	1734	rBV	714	465	0.03%	0.004%
43	6.638	1736	1741	1745	rBV5	1491	1772	0.12%	0.016%
44	6.821	1793	1798	1800	rBV2	816	736	0.05%	0.007%
45	6.854	1804	1808	1815	rVB5	952	1126	0.08%	0.010%
46	6.883	1815	1817	1821	rBV4	964	652	0.05%	0.006%
47	6.905	1822	1824	1826	rBV3	620	287	0.02%	0.003%
48	6.982	1838	1848	1873	rBV	160388	297353	20.78%	2.709%
49	7.310	1939	1950	1969	rBV	624147	1087338	75.97%	9.904%
50	7.619	2036	2046	2068	rBV	110607	195508	13.66%	1.781%
51	7.770	2089	2093	2096	rBV5	591	471	0.03%	0.004%
52	8.001	2162	2165	2167	rBV3	681	393	0.03%	0.004%
53	8.037	2171	2176	2178	rBV3	1111	771	0.05%	0.007%
54	8.085	2181	2191	2219	rBV	442219	814858	56.94%	7.422%
55	8.773	2402	2405	2407	rBV3	621	335	0.02%	0.003%
56	8.805	2412	2415	2417	rBV2	843	616	0.04%	0.006%
57	8.847	2417	2428	2454	rBV	622504	1014040	70.85%	9.237%
58	9.365	2587	2589	2590	rBV	565	317	0.02%	0.003%
59	9.407	2601	2602	2607	rVB5	825	402	0.03%	0.004%
60	9.442	2608	2613	2614	rBV3	662	596	0.04%	0.005%
61	9.529	2639	2640	2642	rBV2	644	344	0.02%	0.003%
62	9.551	2643	2647	2654	rVV4	2637	2790	0.19%	0.025%
63	9.580	2654	2656	2658	rVB3	708	303	0.02%	0.003%
64	9.619	2665	2668	2670	rBV3	805	335	0.02%	0.003%
65	9.677	2684	2686	2688	rBV2	567	391	0.03%	0.004%
66	9.763	2709	2713	2718	rBV5	851	1018	0.07%	0.009%
67	9.818	2726	2730	2733	rBV3	657	563	0.04%	0.005%
68	9.837	2733	2736	2740	rVB3	594	530	0.04%	0.005%
69	9.870	2740	2746	2752	rVB3	611	643	0.04%	0.006%
70	10.107	2818	2820	2821	rBV2	532	302	0.02%	0.003%
71	10.214	2841	2853	2874	rBV	476916	757762	52.95%	6.902%
72	10.419	2914	2917	2920	rBV2	984	536	0.04%	0.005%
73	10.664	2987	2993	2999	rBV5	856	863	0.06%	0.008%
74	10.882	3058	3061	3064	rBV3	715	657	0.05%	0.006%
75	10.947	3079	3081	3083	rVB3	882	355	0.02%	0.003%
76	10.988	3089	3094	3101	rBV4	1098	1166	0.08%	0.011%

Data Path : Z:\voasrv\HPCHEM1\MSVOA_V\Data\VV092022\
 Data File : VV027997.D
 Acq On : 21 Sep 2022 05:57
 Operator : SY/MD
 Sample : N4674-10
 Misc : 5.0mL/MSVOA_V/WATER
 ALS Vial : 44 Sample Multiplier: 1

Instrument :
 MSVOA_V
 ClientSampleId :
 C0EA9

Integration Parameters: LSCINT.P

Integrator: RTE
 Smoothing : OFF
 Sampling : 1
 Start Thrs : 0.2
 Stop Thrs : 0

Filtering: 5
 Min Area: 0 % of largest Peak
 Max Peaks: 100
 Peak Location: TOP

If leading or trailing edge < 100 prefer < Baseline drop else tangent >
 Peak separation: 5

Method : Z:\voasrv\HPCHEM1\MSVOA_V\Method\SFAMVLM092022WMA.M
 Title : VOC Analysis

77	11.017	3101	3103	3105	rBV3	483	295	0.02%	0.003%
78	11.037	3107	3109	3112	rVV3	583	276	0.02%	0.003%
79	11.095	3125	3127	3130	rBV2	760	366	0.03%	0.003%
80	11.127	3134	3137	3138	rBV2	466	254	0.02%	0.002%
81	11.246	3162	3174	3193	rBV	554051	859147	60.03%	7.826%
82	11.496	3248	3252	3255	rVB4	707	615	0.04%	0.006%
83	11.619	3279	3290	3311	rBV	602385	947548	66.21%	8.631%
84	11.988	3404	3405	3407	rBV	684	291	0.02%	0.003%
85	12.091	3434	3437	3439	rBV3	962	765	0.05%	0.007%
86	12.345	3513	3516	3519	rBV4	938	697	0.05%	0.006%
87	12.451	3545	3549	3551	rVB3	554	308	0.02%	0.003%
88	12.490	3559	3561	3562	rBV	820	295	0.02%	0.003%
89	12.583	3588	3590	3593	rBV2	769	364	0.03%	0.003%
90	12.603	3593	3596	3600	rVV4	818	651	0.05%	0.006%
91	13.030	3727	3729	3732	rBV2	681	345	0.02%	0.003%
92	13.062	3737	3739	3742	rBV2	446	264	0.02%	0.002%
93	13.191	3776	3779	3785	rVB3	1136	974	0.07%	0.009%
94	13.278	3803	3806	3807	rBV	845	414	0.03%	0.004%
95	13.474	3865	3867	3870	rBV3	634	263	0.02%	0.002%
96	13.808	3969	3971	3975	rVB3	777	406	0.03%	0.004%
97	13.902	3997	4000	4005	rBV5	1192	1087	0.08%	0.010%
98	14.159	4078	4080	4083	rVB2	1033	555	0.04%	0.005%
99	14.516	4189	4191	4198	rBV5	896	912	0.06%	0.008%
100	14.635	4225	4228	4230	rBV	1176	775	0.05%	0.007%

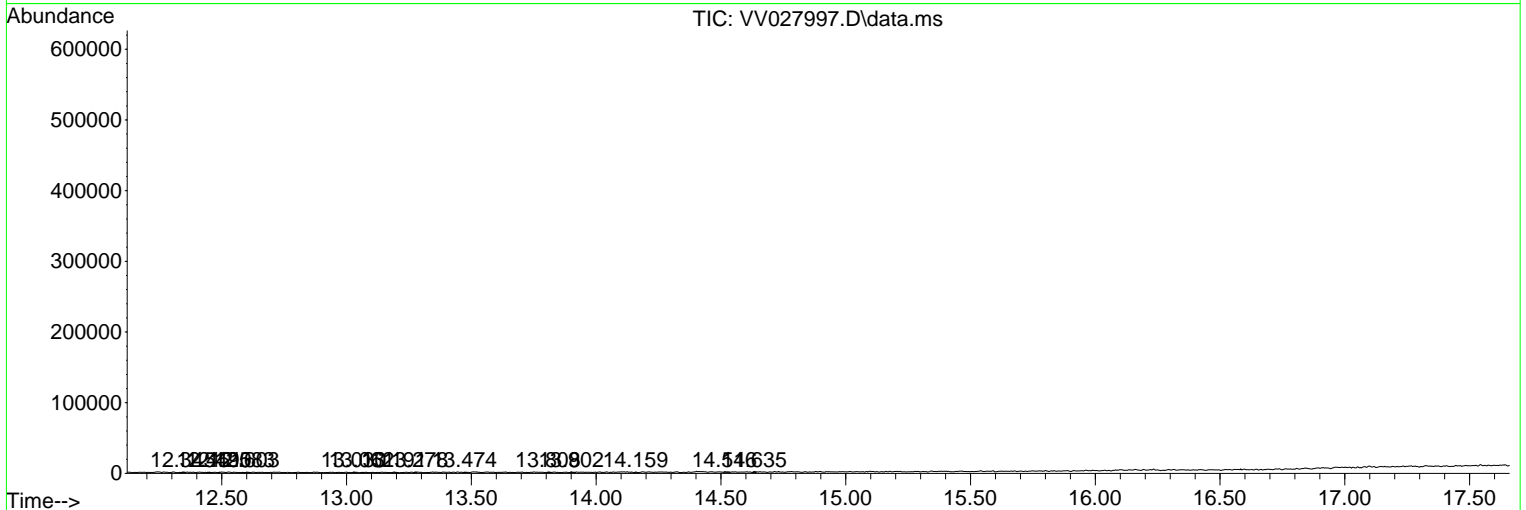
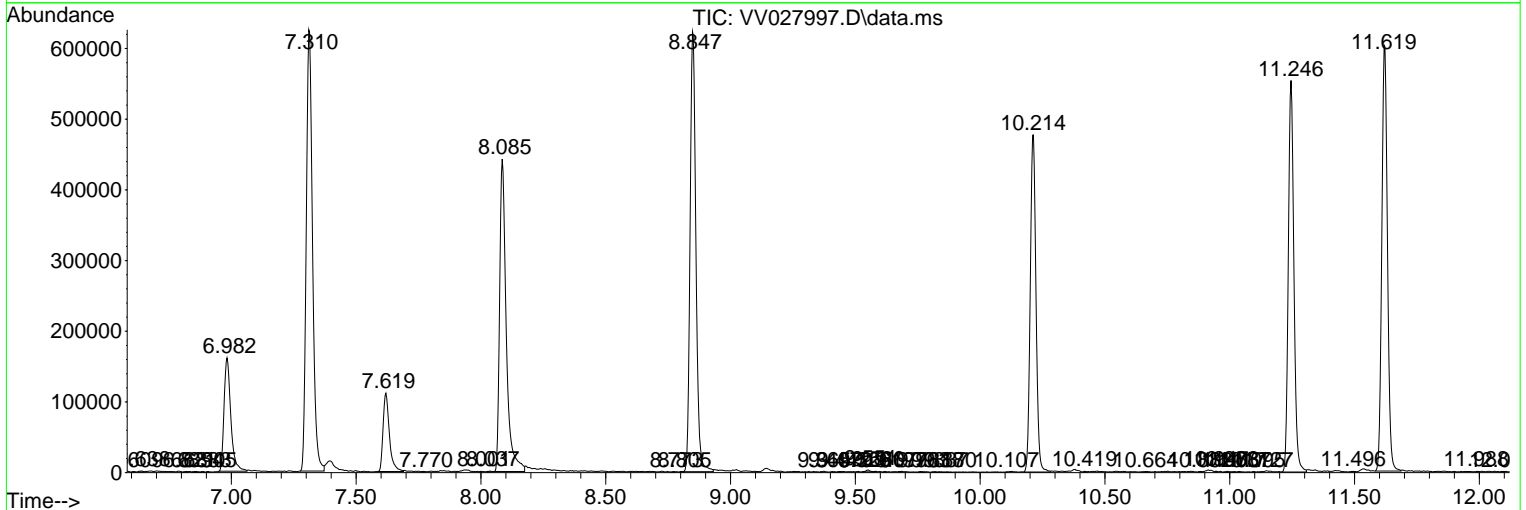
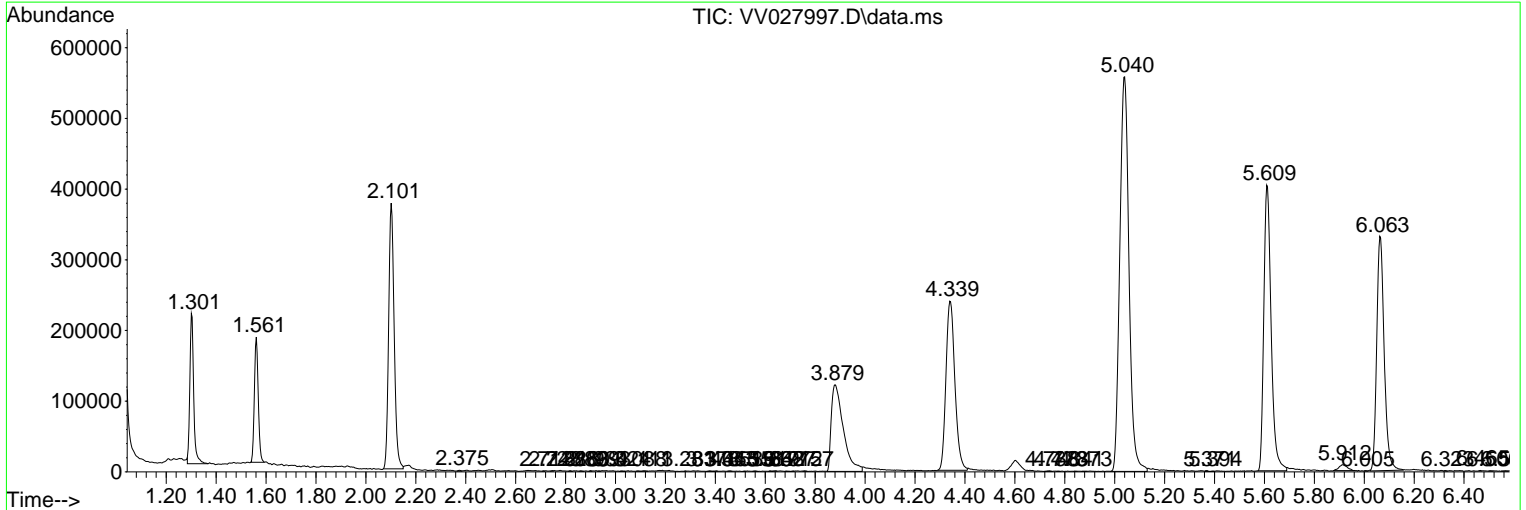
Sum of corrected areas: 10978415

Data Path : Z:\voasrv\HPCHEM1\MSVOA_V\Data\VV092022\
 Data File : VV027997.D
 Acq On : 21 Sep 2022 05:57
 Operator : SY/MD
 Sample : N4674-10
 Misc : 5.0mL/MSVOA_V/WATER
 ALS Vial : 44 Sample Multiplier: 1

Instrument :
 MSVOA_V
 ClientSampleId :
 C0EA9

Quant Method : Z:\voasrv\HPCHEM1\MSVOA_V\Method\SFAMVLM092022WMA.M
 Quant Title : VOC Analysis

TIC Library : C:\Database\NIST11.L
 TIC Integration Parameters: LSCINT.P



Library Search Compound Report

Data Path : Z:\voasrv\HPCHEM1\MSVOA_V\Data\VV092022\
Data File : VV027997.D
Acq On : 21 Sep 2022 05:57
Operator : SY/MD
Sample : N4674-10
Misc : 5.0mL/MSVOA_V/WATER
ALS Vial : 44 Sample Multiplier: 1

Instrument :
MSVOA_V
ClientSampleId :
C0EA9

Quant Method : Z:\voasrv\HPCHEM1\MSVOA_V\Method\SFAMVLM092022WMA.M
Quant Title : VOC Analysis

TIC Library : C:\Database\NIST11.L
TIC Integration Parameters: LSCINT.P

No Library Search Compounds Detected

Data Path : Z:\voasrv\HPCHEM1\MSVOA_V\Data\VV092022\
Data File : VV027997.D
Acq On : 21 Sep 2022 05:57
Operator : SY/MD
Sample : N4674-10
Misc : 5.0mL/MSVOA_V/WATER
ALS Vial : 44 Sample Multiplier: 1

Instrument :
MSVOA_V
ClientSampleId :
C0EA9

Quant Method : Z:\voasrv\HPCHEM1\MSVOA_V\Method\SFAMVLM092022WMA.M
Quant Title : VOC Analysis

TIC Library : C:\Database\NIST11.L
TIC Integration Parameters: LSCINT.P

TIC Top Hit name	RT	EstConc	Units	Response	--Internal Standard--			
					#	RT	Resp	Conc
