

Data Path : Z:\voasrv\HPCHEM1\MSVOA_V\Data\VW092722\
 Data File : VW028132.D
 Acq On : 27 Sep 2022 12:16
 Operator : SY/MD
 Sample : N4820-13DL 10X
 Misc : 25.0mL/MSVOA_V/WATER
 ALS Vial : 5 Sample Multiplier: 1

Instrument :
 MSVOA_V
 ClientSampleId :
 CB8P3DL

Integration Parameters: rteint.p

Integrator: RTE
 Smoothing : ON Filtering: 5
 Sampling : 1 Min Area: 3 % of largest Peak
 Start Thrs: 0.1 Max Peaks: 100
 Stop Thrs : 0 Peak Location: TOP

If leading or trailing edge < 100 prefer < Baseline drop else tangent >
 Peak separation: 5

Method : Z:\voasrv\HPCHEM1\MSVOA_V\Method\SFAMVTR092222WMA.M
 Title : TRACE VOA SFAM1.0

Signal : TIC: VW028132.D\data.ms

peak #	R.T. min	first scan	max scan	last scan	PK TY	peak height	corr. area	corr. % max.	% of total
1	1.105	16	20	24	rVV	11493	9465	1.35%	0.133%
2	1.134	25	29	38	rVB	8498	9893	1.41%	0.139%
3	1.301	74	81	95	rVB	102183	104241	14.87%	1.459%
4	1.561	155	162	175	rVB	83607	93964	13.40%	1.316%
5	1.947	276	282	291	rVB3	10301	14188	2.02%	0.199%
6	2.101	319	330	343	rBV	152332	218976	31.24%	3.066%
7	2.500	444	454	470	rBV	50661	86200	12.30%	1.207%
8	3.908	876	892	929	rBV2	60679	294984	42.08%	4.130%
9	4.343	1011	1027	1049	rBV2	111353	279495	39.87%	3.913%
10	4.667	1120	1128	1143	rVB2	3834	8691	1.24%	0.122%
11	5.040	1228	1244	1277	rBV2	242462	612083	87.32%	8.570%
12	5.613	1410	1422	1452	rBV	192229	401432	57.27%	5.620%
13	6.066	1546	1563	1590	rBV2	141652	310438	44.29%	4.346%
14	6.986	1839	1849	1869	rBV2	61675	122345	17.45%	1.713%
15	7.313	1939	1951	1973	rBV	244723	435113	62.07%	6.092%
16	7.622	2037	2047	2067	rBV	37190	74057	10.56%	1.037%
17	7.934	2136	2144	2158	rVB5	5338	8944	1.28%	0.125%
18	8.088	2181	2192	2225	rBV	308473	632281	90.20%	8.852%
19	8.850	2417	2429	2432	rBV	335837	480700	68.57%	6.730%
20	8.876	2433	2437	2462	rVB	452964	700999	100.00%	9.814%
21	9.931	2755	2765	2779	rBV2	17241	28070	4.00%	0.393%
22	10.214	2842	2853	2872	rBV	115480	183776	26.22%	2.573%
23	10.378	2892	2904	2916	rBV2	11504	19411	2.77%	0.272%
24	10.731	3005	3014	3028	rVB7	4794	9148	1.30%	0.128%
25	11.053	3106	3114	3119	rVB3	7710	11402	1.63%	0.160%
26	11.082	3119	3123	3136	rVB2	12457	18157	2.59%	0.254%
27	11.246	3163	3174	3197	rBV	318027	545353	77.80%	7.635%
28	11.448	3230	3237	3249	rBV2	7092	10644	1.52%	0.149%
29	11.526	3249	3261	3277	rBV2	83014	167123	23.84%	2.340%
30	11.622	3277	3291	3310	rVV	274814	459616	65.57%	6.435%
31	11.741	3319	3328	3339	rBV4	11805	19315	2.76%	0.270%
32	12.014	3397	3413	3420	rBV	98548	156952	22.39%	2.197%
33	12.114	3434	3444	3466	rBV3	35967	97599	13.92%	1.366%
34	12.246	3474	3485	3493	rBV4	5568	10419	1.49%	0.146%
35	12.294	3493	3500	3508	rVV4	6601	9769	1.39%	0.137%
36	12.410	3520	3536	3546	rBV	99604	156590	22.34%	2.192%

Data Path : Z:\voasrv\HPCHEM1\MSVOA_V\Data\VW092722\
Data File : VW028132.D
Acq On : 27 Sep 2022 12:16
Operator : SY/MD
Sample : N4820-13DL 10X
Misc : 25.0mL/MSVOA_V/WATER
ALS Vial : 5 Sample Multiplier: 1

Instrument :
MSVOA_V
ClientSampleId :
CB8P3DL

Integration Parameters: rteint.p

Integrator: RTE

Smoothing : ON

Sampling : 1

Start Thrs: 0.1

Stop Thrs : 0

Filtering: 5

Min Area: 3 % of largest Peak

Max Peaks: 100

Peak Location: TOP

If leading or trailing edge < 100 prefer < Baseline drop else tangent >

Peak separation: 5

Method : Z:\voasrv\HPCHEM1\MSVOA_V\Method\SFAMVTR092222WMA.M

Title : TRACE VOA SFAM1.0

37	12.545	3571	3578	3590	rVB3	10721	16661	2.38%	0.233%
38	12.638	3598	3607	3611	rBV6	4901	7200	1.03%	0.101%
39	12.722	3622	3633	3650	rVB	42956	74347	10.61%	1.041%
40	12.879	3668	3682	3691	rBV2	103699	171820	24.51%	2.406%
41	12.998	3711	3719	3726	rBV	8701	12630	1.80%	0.177%
42	13.268	3794	3803	3813	rBV3	18412	27212	3.88%	0.381%
43	13.394	3837	3842	3850	rVB4	6236	9213	1.31%	0.129%
44	14.037	4031	4042	4052	rBV2	6052	10698	1.53%	0.150%
45	16.307	4742	4748	4759	rVB5	8032	10939	1.56%	0.153%

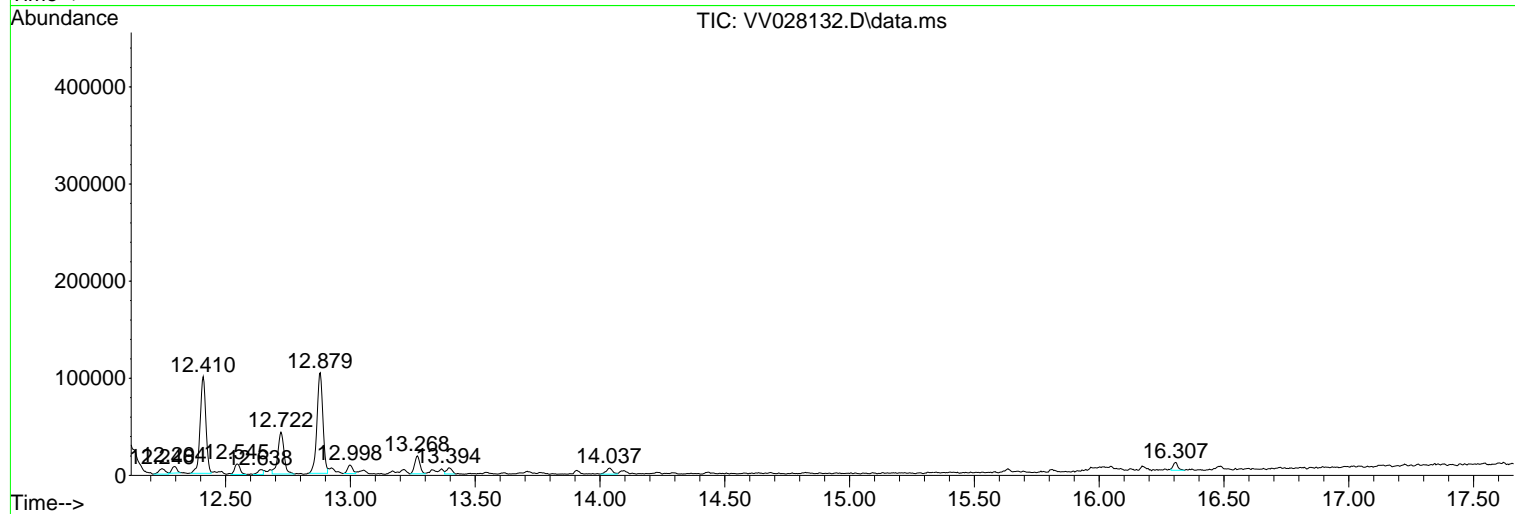
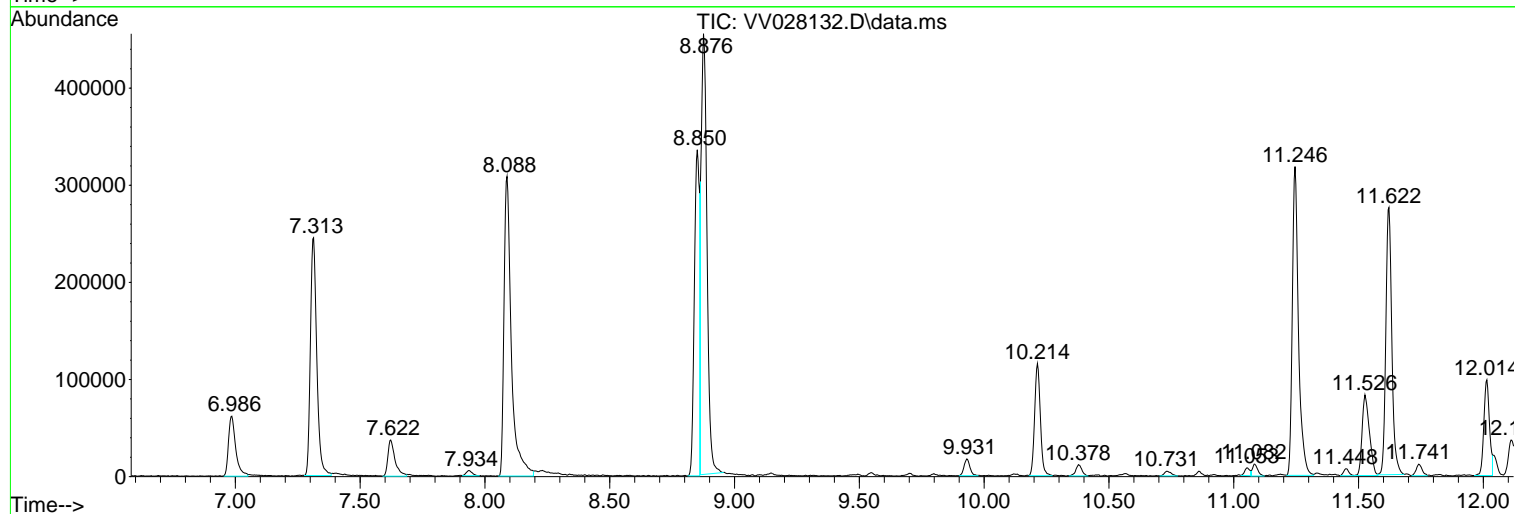
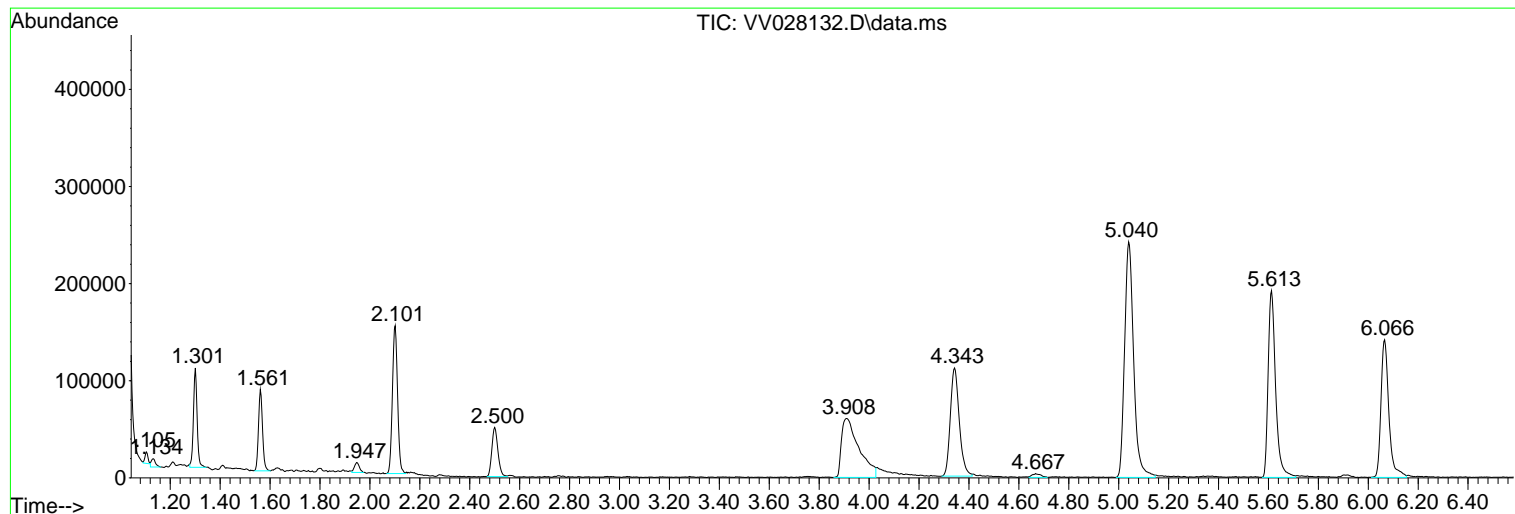
Sum of corrected areas: 7142553

Data Path : Z:\voasrv\HPCHEM1\MSVOA_V\Data\VV092722\
 Data File : VV028132.D
 Acq On : 27 Sep 2022 12:16
 Operator : SY/MD
 Sample : N4820-13DL 10X
 Misc : 25.0mL/MSVOA_V/WATER
 ALS Vial : 5 Sample Multiplier: 1

Instrument :
 MSVOA_V
 ClientSampleId :
 CB8P3DL

Quant Method : Z:\voasrv\HPCHEM1\MSVOA_V\Method\SFAMVTR092222WMA.M
 Quant Title : TRACE VOA SFAM1.0

TIC Library : C:\Database\NIST20.L
 TIC Integration Parameters: LSCINT.P



Data Path : Z:\voasrv\HPCHEM1\MSVOA_V\Data\VV092722\
 Data File : VV028132.D
 Acq On : 27 Sep 2022 12:16
 Operator : SY/MD
 Sample : N4820-13DL 10X
 Misc : 25.0mL/MSVOA_V/WATER
 ALS Vial : 5 Sample Multiplier: 1

Instrument :
 MSVOA_V
 ClientSampleId :
 CB8P3DL

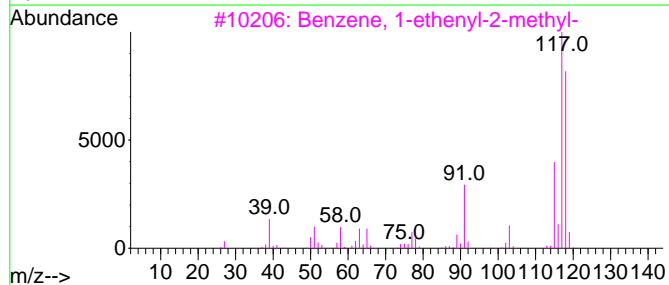
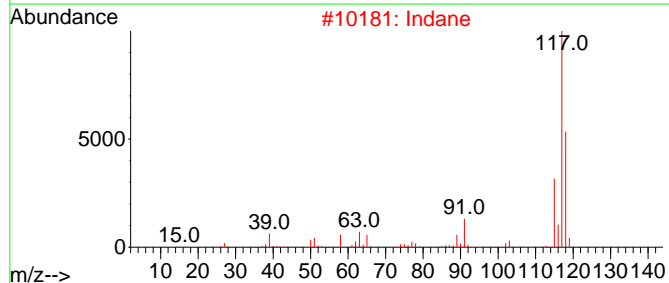
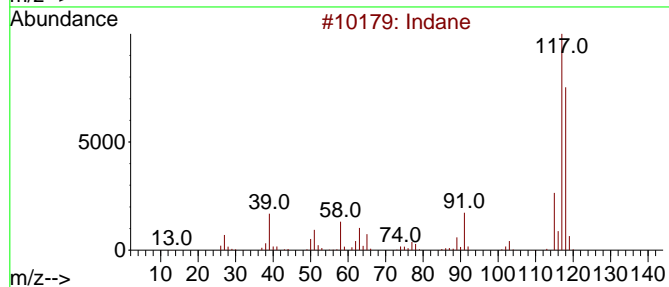
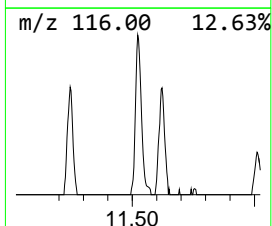
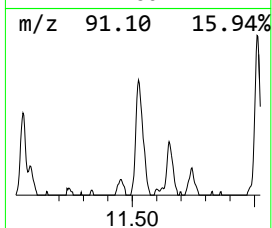
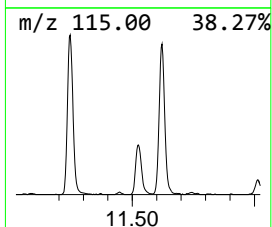
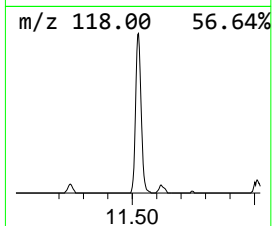
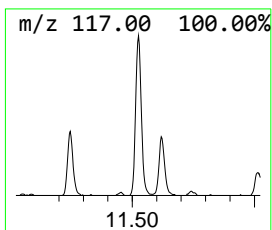
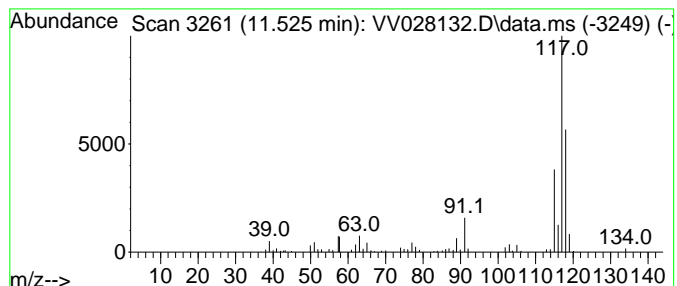
Quant Method : Z:\voasrv\HPCHEM1\MSVOA_V\Method\SFAMVTR092222WMA.M
 Quant Title : TRACE VOA SFAM1.0

TIC Library : C:\Database\NIST20.L
 TIC Integration Parameters: LSCINT.P

 Peak Number 2 Indane Concentration Rank 2

R.T.	EstConc	Area	Relative to ISTD	R.T.
11.525	1.53 ug/L	167123	1,4-Dichlorobenzene-d4	11.246

Hit#	of	5	Tentative ID	MW	MolForm	CAS#	Qual
1			Indane	118	C9H10	000496-11-7	90
2			Indane	118	C9H10	000496-11-7	90
3			Benzene, 1-ethenyl-2-methyl-	118	C9H10	000611-15-4	76
4			Benzene, 1-ethenyl-4-methyl-	118	C9H10	000622-97-9	68
5			Tetracyclo[3.3.1.0(2,8).0(4,6)]-...	118	C9H10	1000191-13-7	68



Data Path : Z:\voasrv\HPCHEM1\MSVOA_V\Data\VV092722\
 Data File : VV028132.D
 Acq On : 27 Sep 2022 12:16
 Operator : SY/MD
 Sample : N4820-13DL 10X
 Misc : 25.0mL/MSVOA_V/WATER
 ALS Vial : 5 Sample Multiplier: 1

Instrument :
 MSVOA_V
 ClientSampleId :
 CB8P3DL

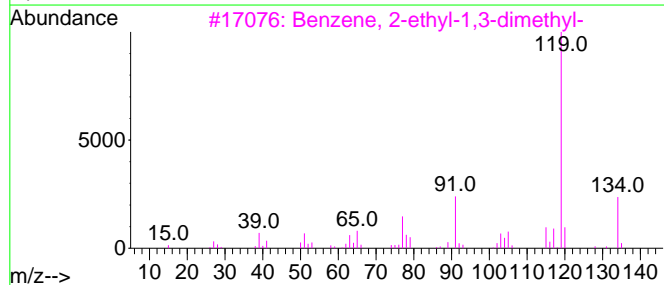
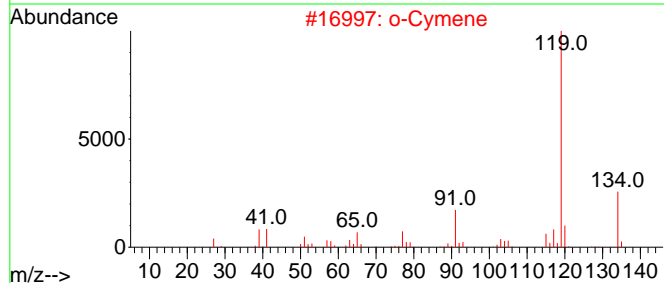
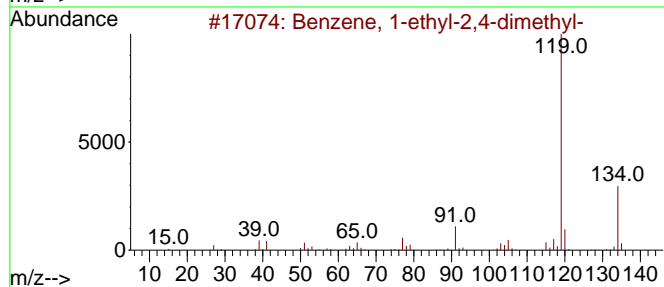
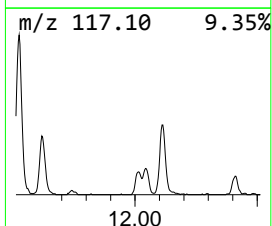
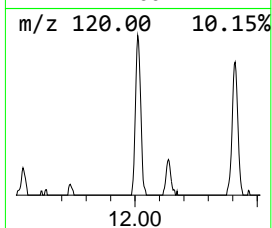
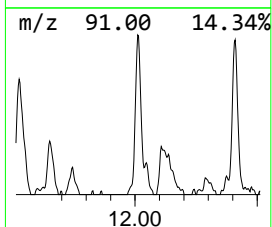
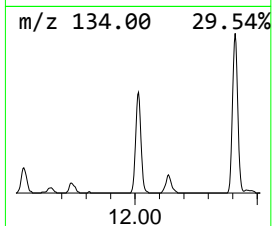
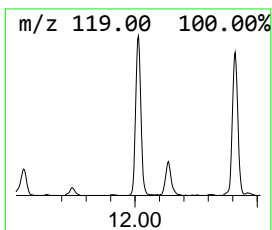
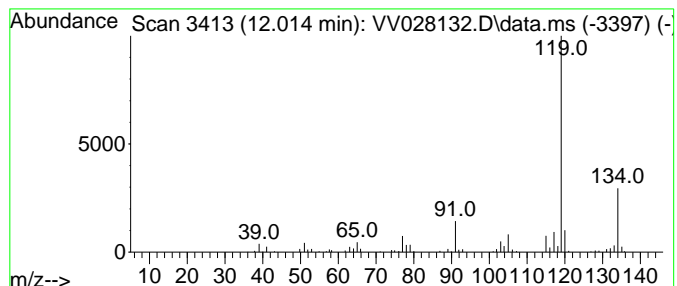
Quant Method : Z:\voasrv\HPCHEM1\MSVOA_V\Method\SFAMVTR092222WMA.M
 Quant Title : TRACE VOA SFAM1.0

TIC Library : C:\Database\NIST20.L
 TIC Integration Parameters: LSCINT.P

 Peak Number 3 Benzene, 1-ethyl-2,4-dimethyl- Concentration Rank 4

R.T.	EstConc	Area	Relative to ISTD	R.T.
12.014	1.44 ug/L	156952	1,4-Dichlorobenzene-d4	11.246

Hit#	of	5	Tentative ID	MW	MolForm	CAS#	Qual
1			Benzene, 1-ethyl-2,4-dimethyl-	134	C10H14	000874-41-9	95
2			o-Cymene	134	C10H14	000527-84-4	95
3			Benzene, 2-ethyl-1,3-dimethyl-	134	C10H14	002870-04-4	95
4			Benzene, 1-methyl-3-(1-methyleth...	134	C10H14	000535-77-3	94
5			Benzene, 1-ethyl-3,5-dimethyl-	134	C10H14	000934-74-7	94



Data Path : Z:\voasrv\HPCHEM1\MSVOA_V\Data\VV092722\
 Data File : VV028132.D
 Acq On : 27 Sep 2022 12:16
 Operator : SY/MD
 Sample : N4820-13DL 10X
 Misc : 25.0mL/MSVOA_V/WATER
 ALS Vial : 5 Sample Multiplier: 1

Instrument :
 MSVOA_V
 ClientSampleId :
 CB8P3DL

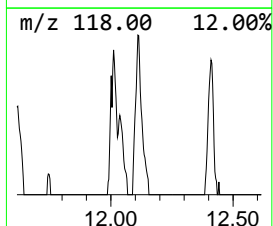
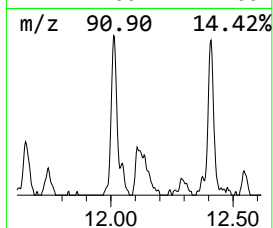
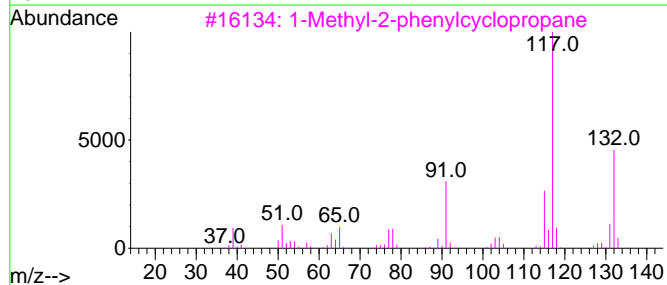
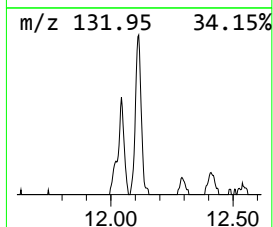
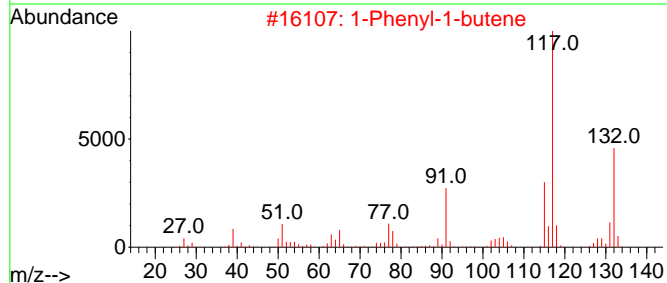
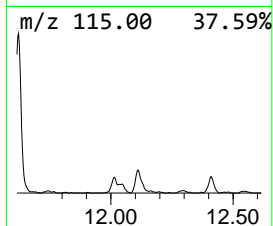
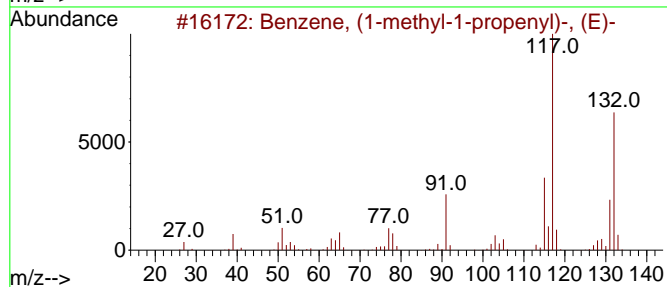
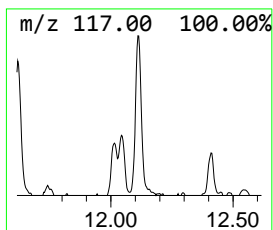
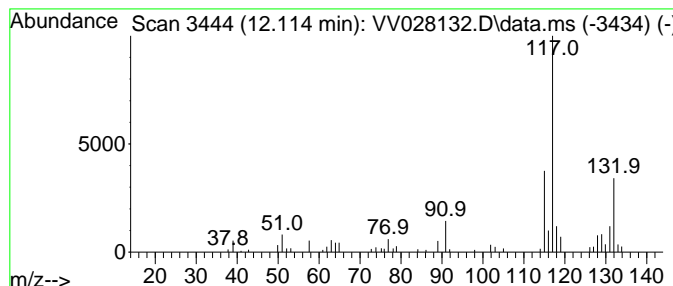
Quant Method : Z:\voasrv\HPCHEM1\MSVOA_V\Method\SFAMVTR092222WMA.M
 Quant Title : TRACE VOA SFAM1.0

TIC Library : C:\Database\NIST20.L
 TIC Integration Parameters: LSCINT.P

 Peak Number 4 Benzene, (1-methyl-1-propen... Concentration Rank 6

R.T.	EstConc	Area	Relative to ISTD	R.T.
12.114	0.89 ug/L	97599	1,4-Dichlorobenzene-d4	11.246

Hit#	of	5	Tentative ID	MW	MolForm	CAS#	Qual
1			Benzene, (1-methyl-1-propenyl)-,...	132	C10H12	000768-00-3	91
2			1-Phenyl-1-butene	132	C10H12	000824-90-8	91
3			1-Methyl-2-phenylcyclopropane	132	C10H12	003145-76-4	91
4			Benzene, 1-ethenyl-3-ethyl-	132	C10H12	007525-62-4	87
5			Indan, 1-methyl-	132	C10H12	000767-58-8	87



Data Path : Z:\voasrv\HPCHEM1\MSVOA_V\Data\VV092722\
 Data File : VV028132.D
 Acq On : 27 Sep 2022 12:16
 Operator : SY/MD
 Sample : N4820-13DL 10X
 Misc : 25.0mL/MSVOA_V/WATER
 ALS Vial : 5 Sample Multiplier: 1

Instrument :
 MSVOA_V
 ClientSampleId :
 CB8P3DL

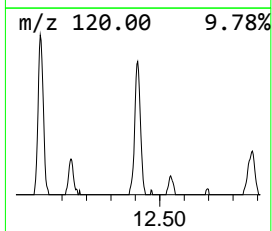
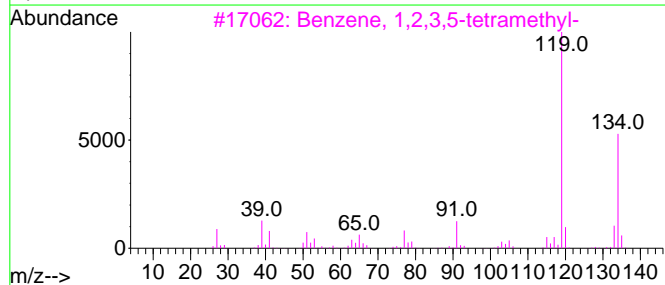
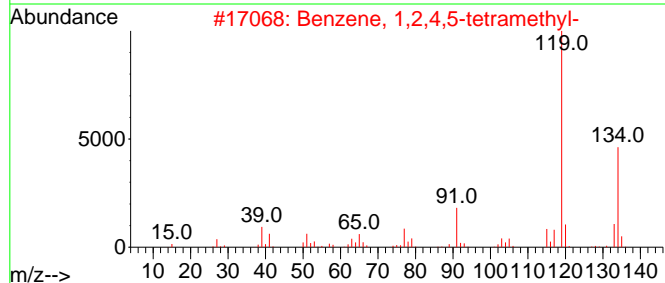
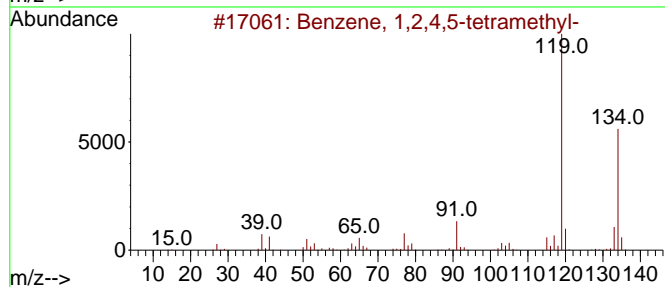
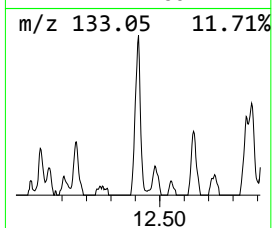
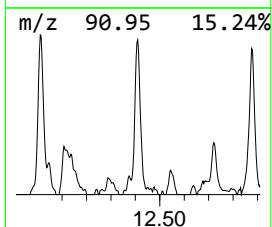
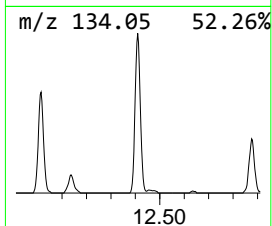
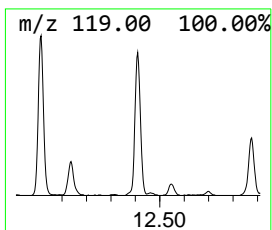
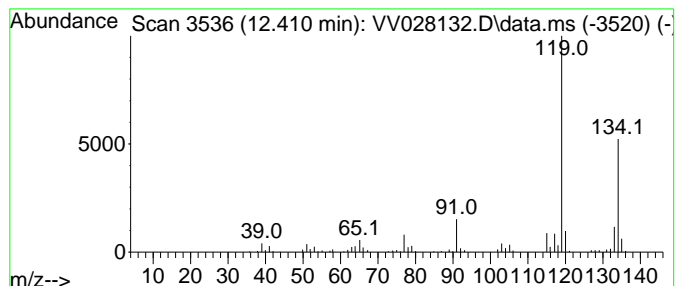
Quant Method : Z:\voasrv\HPCHEM1\MSVOA_V\Method\SFAMVTR092222WMA.M
 Quant Title : TRACE VOA SFAM1.0

TIC Library : C:\Database\NIST20.L
 TIC Integration Parameters: LSCINT.P

 Peak Number 5 Benzene, 1,2,4,5-tetramethyl- Concentration Rank 5

R.T.	EstConc	Area	Relative to ISTD	R.T.
12.410	1.44 ug/L	156590	1,4-Dichlorobenzene-d4	11.246

Hit#	of	Tentative ID	MW	MolForm	CAS#	Qual
1	5	Benzene, 1,2,4,5-tetramethyl-	134	C10H14	000095-93-2	97
2		Benzene, 1,2,4,5-tetramethyl-	134	C10H14	000095-93-2	97
3		Benzene, 1,2,3,5-tetramethyl-	134	C10H14	000527-53-7	97
4		Benzene, 1,2,3,4-tetramethyl-	134	C10H14	000488-23-3	95
5		Benzene, 1,2,3,4-tetramethyl-	134	C10H14	000488-23-3	95



Data Path : Z:\voasrv\HPCHEM1\MSVOA_V\Data\VV092722\
 Data File : VV028132.D
 Acq On : 27 Sep 2022 12:16
 Operator : SY/MD
 Sample : N4820-13DL 10X
 Misc : 25.0mL/MSVOA_V/WATER
 ALS Vial : 5 Sample Multiplier: 1

Instrument :
 MSVOA_V
 ClientSampleId :
 CB8P3DL

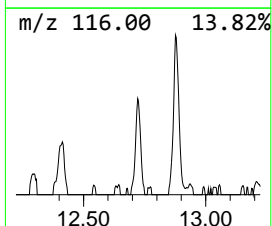
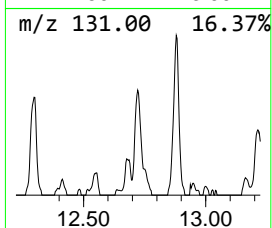
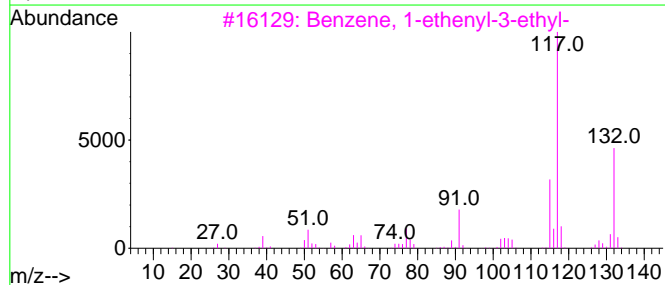
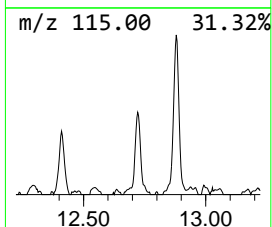
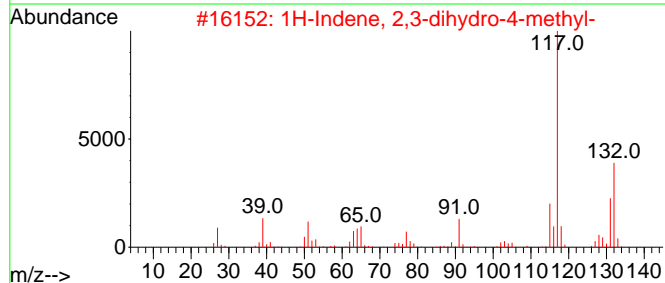
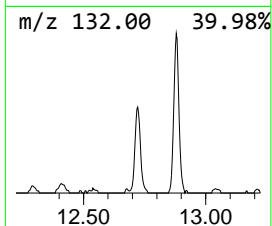
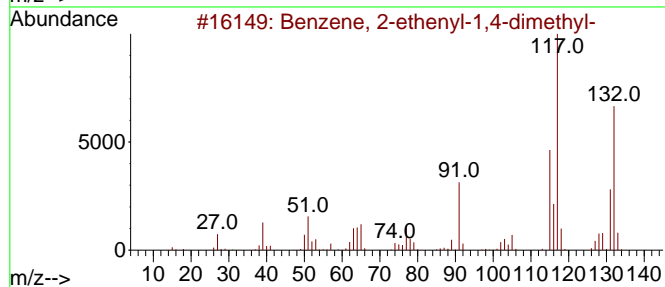
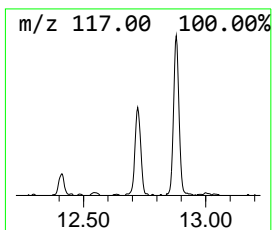
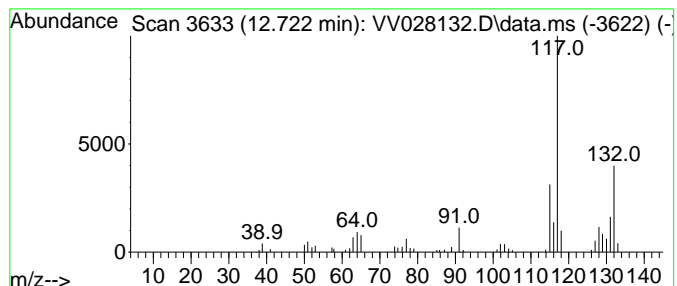
Quant Method : Z:\voasrv\HPCHEM1\MSVOA_V\Method\SFAMVTR092222WMA.M
 Quant Title : TRACE VOA SFAM1.0

TIC Library : C:\Database\NIST20.L
 TIC Integration Parameters: LSCINT.P

 Peak Number 6 Benzene, 2-ethenyl-1,4-dime... Concentration Rank 7

R.T.	EstConc	Area	Relative to ISTD	R.T.
12.722	0.68 ug/L	74347	1,4-Dichlorobenzene-d4	11.246

Hit#	of 5	Tentative ID	MW	MolForm	CAS#	Qual
1		Benzene, 2-ethenyl-1,4-dimethyl-	132	C10H12	002039-89-6	92
2		1H-Indene, 2,3-dihydro-4-methyl-	132	C10H12	000824-22-6	87
3		Benzene, 1-ethenyl-3-ethyl-	132	C10H12	007525-62-4	87
4		Benzene, (1-methyl-1-propenyl)-,...	132	C10H12	000768-00-3	87
5		Benzene, 1-methyl-4-(2-propenyl)-	132	C10H12	003333-13-9	87



Data Path : Z:\voasrv\HPCHEM1\MSVOA_V\Data\VV092722\
 Data File : VV028132.D
 Acq On : 27 Sep 2022 12:16
 Operator : SY/MD
 Sample : N4820-13DL 10X
 Misc : 25.0mL/MSVOA_V/WATER
 ALS Vial : 5 Sample Multiplier: 1

Instrument :
 MSVOA_V
 ClientSampleId :
 CB8P3DL

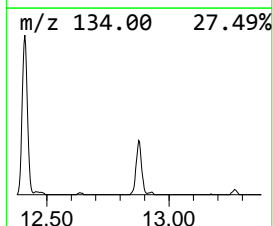
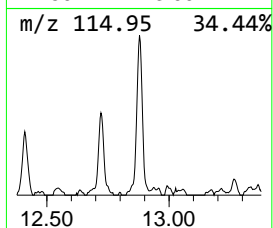
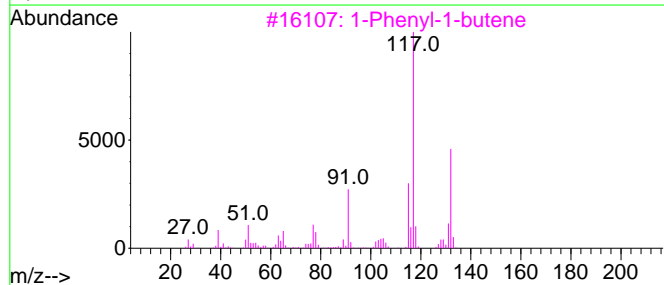
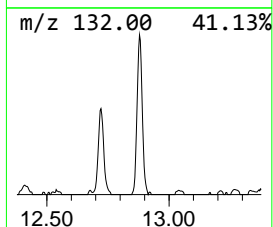
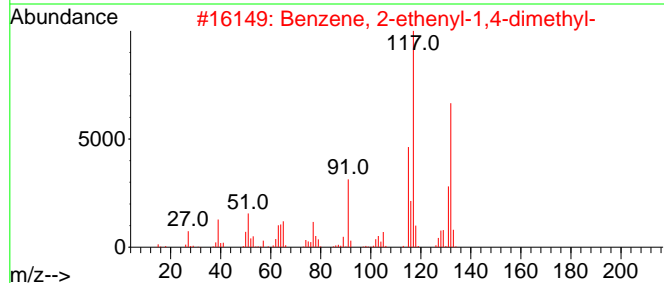
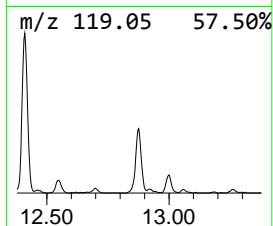
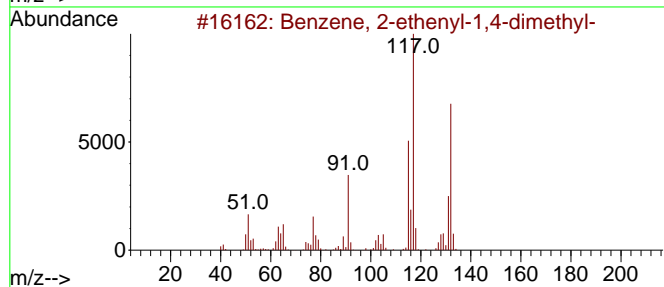
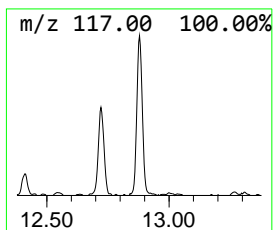
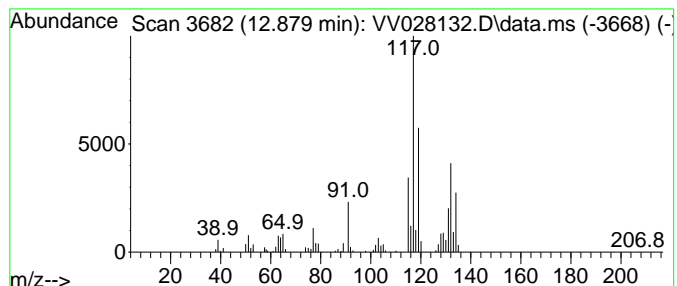
Quant Method : Z:\voasrv\HPCHEM1\MSVOA_V\Method\SFAMVTR092222WMA.M
 Quant Title : TRACE VOA SFAM1.0

TIC Library : C:\Database\NIST20.L
 TIC Integration Parameters: LSCINT.P

 Peak Number 7 1-Phenyl-1-butene Concentration Rank 1

R.T.	EstConc	Area	Relative to ISTD	R.T.
12.879	1.58 ug/L	171820	1,4-Dichlorobenzene-d4	11.246

Hit#	of	Tentative ID	MW	MolForm	CAS#	Qual
1	5	Benzene, 2-ethenyl-1,4-dimethyl-	132	C10H12	002039-89-6	91
2		Benzene, 2-ethenyl-1,4-dimethyl-	132	C10H12	002039-89-6	91
3		1-Phenyl-1-butene	132	C10H12	000824-90-8	70
4		Benzene, 1-ethenyl-3-ethyl-	132	C10H12	007525-62-4	64
5		1H-Indene, 2,3-dihydro-5-methyl-	132	C10H12	000874-35-1	64



Data Path : Z:\voasrv\HPCHEM1\MSVOA_V\Data\VV092722\
Data File : VV028132.D
Acq On : 27 Sep 2022 12:16
Operator : SY/MD
Sample : N4820-13DL 10X
Misc : 25.0mL/MSVOA_V/WATER
ALS Vial : 5 Sample Multiplier: 1

Instrument :
MSVOA_V
ClientSampleId :
CB8P3DL

Quant Method : Z:\voasrv\HPCHEM1\MSVOA_V\Method\SFAMVTR092222WMA.M
Quant Title : TRACE VOA SFAM1.0

TIC Library : C:\Database\NIST0.L
TIC Integration Parameters: LSCINT.P

TIC Top Hit name	RT	EstConc	Units	Response	--Internal Standard--			
					#	RT	Resp	Conc
Indane	11.525	1.5	ug/L	167123	3	11.246	545353	5.0
Benzene, 1-ethy...	12.014	1.4	ug/L	156952	3	11.246	545353	5.0
Benzene, (1-met...	12.114	0.9	ug/L	97599	3	11.246	545353	5.0
Benzene, 1,2,4,...	12.410	1.4	ug/L	156590	3	11.246	545353	5.0
Benzene, 2-eth...	12.722	0.7	ug/L	74347	3	11.246	545353	5.0
1-Phenyl-1-butene	12.879	1.6	ug/L	171820	3	11.246	545353	5.0