

Data Path : Z:\voasrv\HPCHEM1\MSVOA_V\Data\VW093022\
 Data File : VW028238.D
 Acq On : 30 Sep 2022 19:53
 Operator : SY/MD
 Sample : N4873-10
 Misc : 25.0mL/MSVOA_V/WATER
 ALS Vial : 23 Sample Multiplier: 1

Instrument :
 MSVOA_V
 ClientSampleId :
 EXZ56

Quant Time: Sep 30 23:02:49 2022
 Quant Method : Z:\voasrv\HPCHEM1\MSVOA_V\Method\SFAMVTR092222WMA.M
 Quant Title : TRACE VOA SFAM1.0
 QLast Update : Thu Sep 29 01:25:35 2022
 Response via : Initial Calibration

Compound	R.T.	QIon	Response	Conc	Units	Dev(Min)

Internal Standards						
1) 1,4-Difluorobenzene	5.613	114	145857	5.000	ug/L	0.00
28) Chlorobenzene-d5	8.847	117	146075	5.000	ug/L	0.00
58) 1,4-Dichlorobenzene-d4	11.246	152	66976	5.000	ug/L	0.00
System Monitoring Compounds						
4) Vinyl Chloride-d3	1.301	65	64748	4.282	ug/L	0.00
Spiked Amount	5.000	Range 40 - 130	Recovery	=	85.600%	
7) Chloroethane-d5	1.561	69	58032	4.827	ug/L	0.00
Spiked Amount	5.000	Range 65 - 130	Recovery	=	96.600%	
11) 1,1-Dichloroethene-d2	2.098	63	95615	3.646	ug/L	0.00
Spiked Amount	5.000	Range 60 - 125	Recovery	=	73.000%	
20) 2-Butanone-d5	3.896	46	114381	44.805	ug/L	0.00
Spiked Amount	50.000	Range 40 - 130	Recovery	=	89.600%	
24) Chloroform-d	4.339	84	118136	4.896	ug/L	0.00
Spiked Amount	5.000	Range 70 - 125	Recovery	=	98.000%	
26) 1,2-Dichloroethane-d4	5.024	65	53317	4.644	ug/L	0.00
Spiked Amount	5.000	Range 70 - 130	Recovery	=	92.800%	
32) Benzene-d6	5.040	84	232070	4.845	ug/L	0.00
Spiked Amount	5.000	Range 70 - 125	Recovery	=	97.000%	
36) 1,2-Dichloropropane-d6	6.063	67	67959	4.551	ug/L	0.00
Spiked Amount	5.000	Range 60 - 140	Recovery	=	91.000%	
41) Toluene-d8	7.310	98	196441	4.531	ug/L	0.00
Spiked Amount	5.000	Range 70 - 130	Recovery	=	90.600%	
43) trans-1,3-Dichloroprop...	7.622	79	21154	3.922	ug/L	0.00
Spiked Amount	5.000	Range 55 - 130	Recovery	=	78.400%	
46) 2-Hexanone-d5	8.085	63	99069	44.008	ug/L	0.00
Spiked Amount	50.000	Range 45 - 130	Recovery	=	88.020%	
56) 1,1,2,2-Tetrachloroeth...	10.214	84	48459	4.748	ug/L	0.00
Spiked Amount	5.000	Range 65 - 120	Recovery	=	95.000%	
66) 1,2-Dichlorobenzene-d4	11.622	152	74148	5.644	ug/L	0.00
Spiked Amount	5.000	Range 80 - 120	Recovery	=	112.800%	

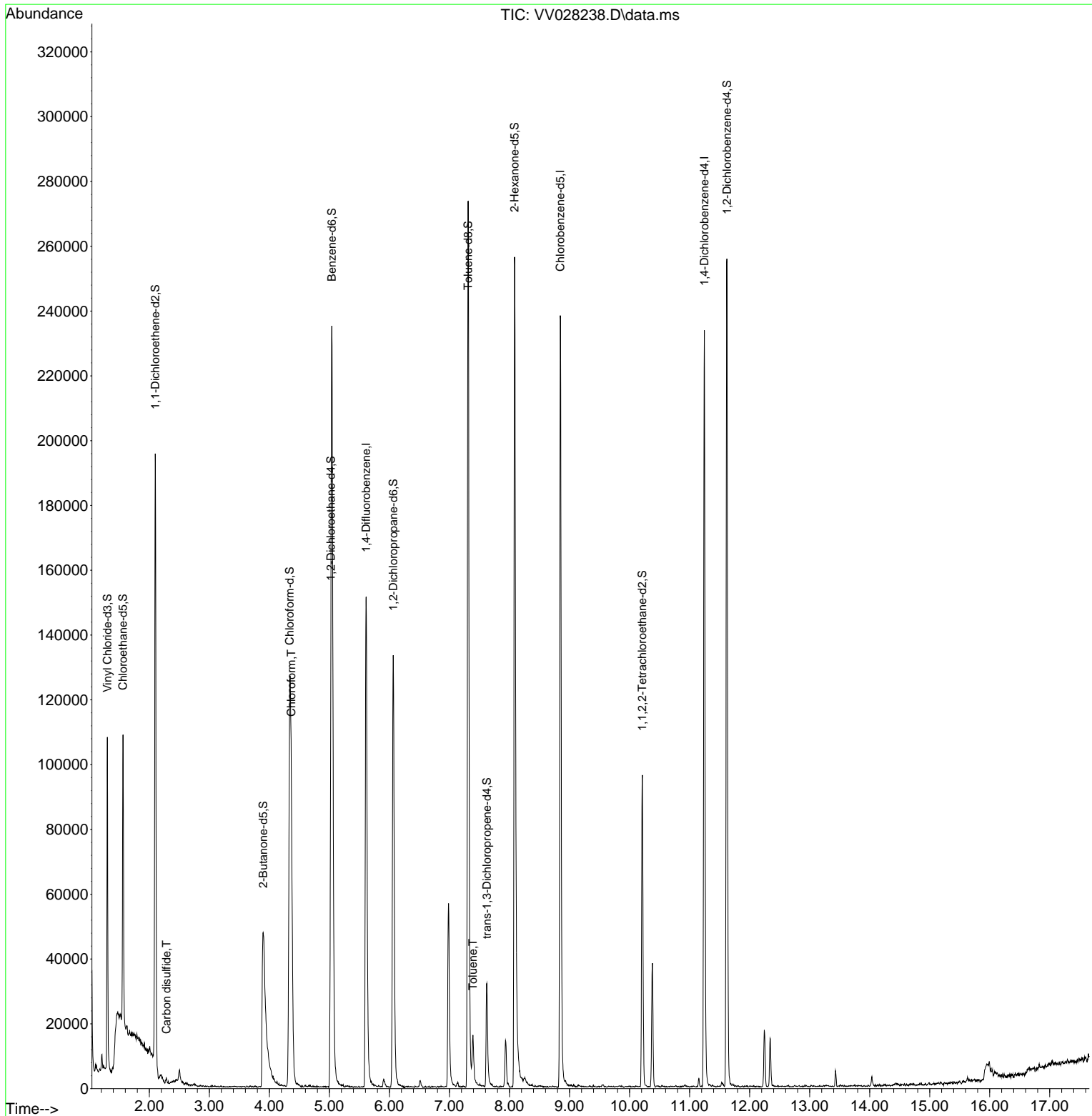
Target Compounds						Qvalue
14) Carbon disulfide	2.285	76	2115	0.109	ug/L #	75
25) Chloroform	4.365	83	67115	3.249	ug/L	99
42) Toluene	7.391	91	12582	0.297	ug/L	98

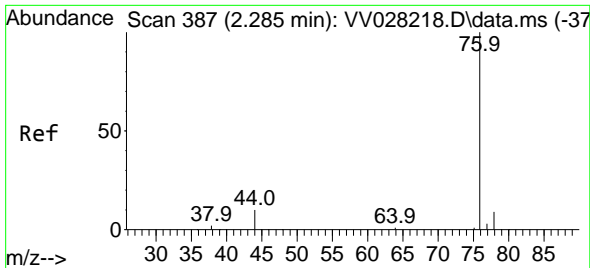
(#) = qualifier out of range (m) = manual integration (+) = signals summed

Data Path : Z:\voasrv\HPCHEM1\MSVOA_V\Data\VV093022\
 Data File : VV028238.D
 Acq On : 30 Sep 2022 19:53
 Operator : SY/MD
 Sample : N4873-10
 Misc : 25.0mL/MSVOA_V/WATER
 ALS Vial : 23 Sample Multiplier: 1

Instrument :
 MSVOA_V
 ClientSampleId :
 EXZ56

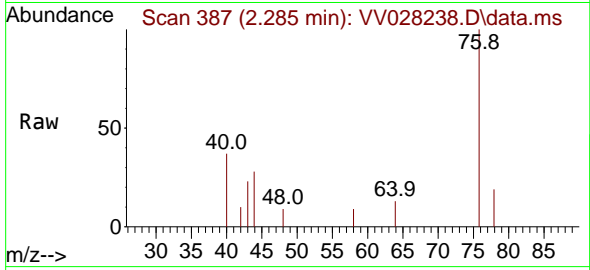
Quant Time: Sep 30 23:02:49 2022
 Quant Method : Z:\voasrv\HPCHEM1\MSVOA_V\Method\SFAMVTR092222WMA.M
 Quant Title : TRACE VOA SFAM1.0
 QLast Update : Thu Sep 29 01:25:35 2022
 Response via : Initial Calibration



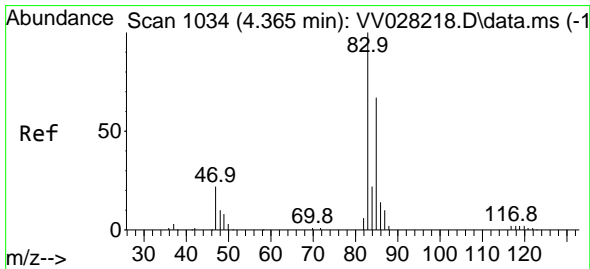
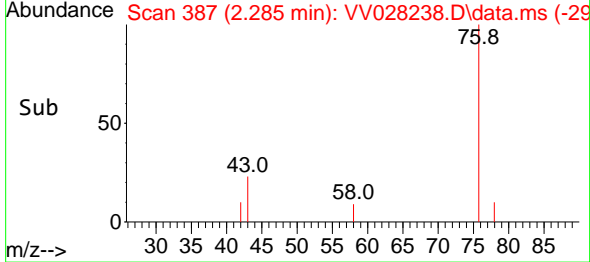
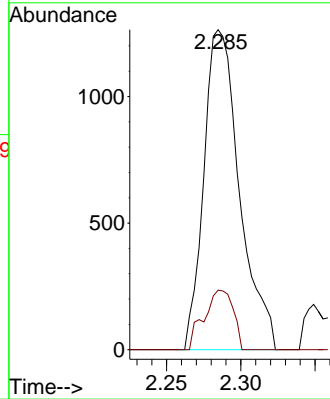


#14
 Carbon disulfide
 Concen: 0.109 ug/L
 RT: 2.285 min Scan# 387
 Delta R.T. -0.000 min
 Lab File: VV028238.D
 Acq: 30 Sep 2022 19:53

Instrument : MSVOA_V
 ClientSampleId : EXZ56

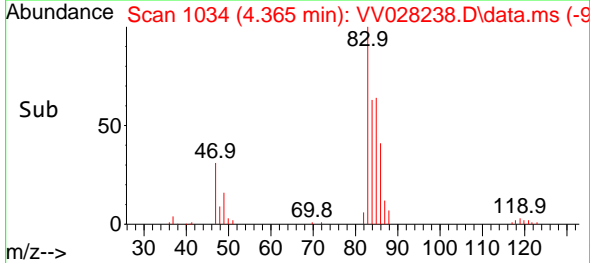
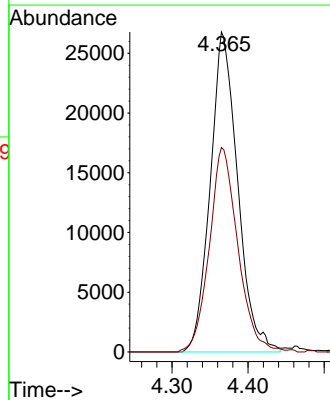
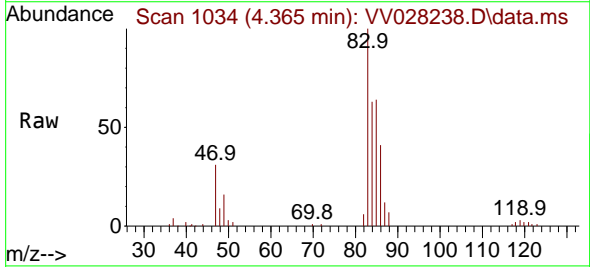


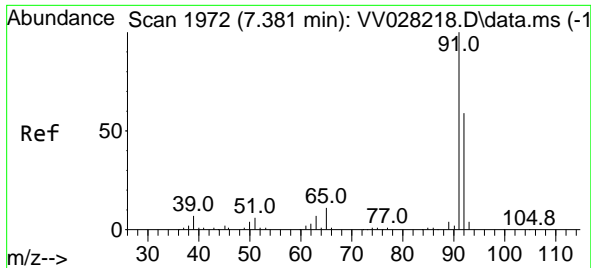
Tgt Ion: 76 Resp: 2115
 Ion Ratio Lower Upper
 76 100
 78 18.6 7.6 11.4#



#25
 Chloroform
 Concen: 3.249 ug/L
 RT: 4.365 min Scan# 1034
 Delta R.T. 0.003 min
 Lab File: VV028238.D
 Acq: 30 Sep 2022 19:53

Tgt Ion: 83 Resp: 67115
 Ion Ratio Lower Upper
 83 100
 85 63.9 45.1 83.7





#42
 Toluene
 Concen: 0.297 ug/L
 RT: 7.391 min Scan# 1975
 Delta R.T. 0.010 min
 Lab File: VV028238.D
 Acq: 30 Sep 2022 19:53

Instrument :
 MSVOA_V
 ClientSampleId :
 EXZ56

Tgt Ion: 91 Resp: 12582
 Ion Ratio Lower Upper
 91 100
 92 58.8 40.2 74.6

