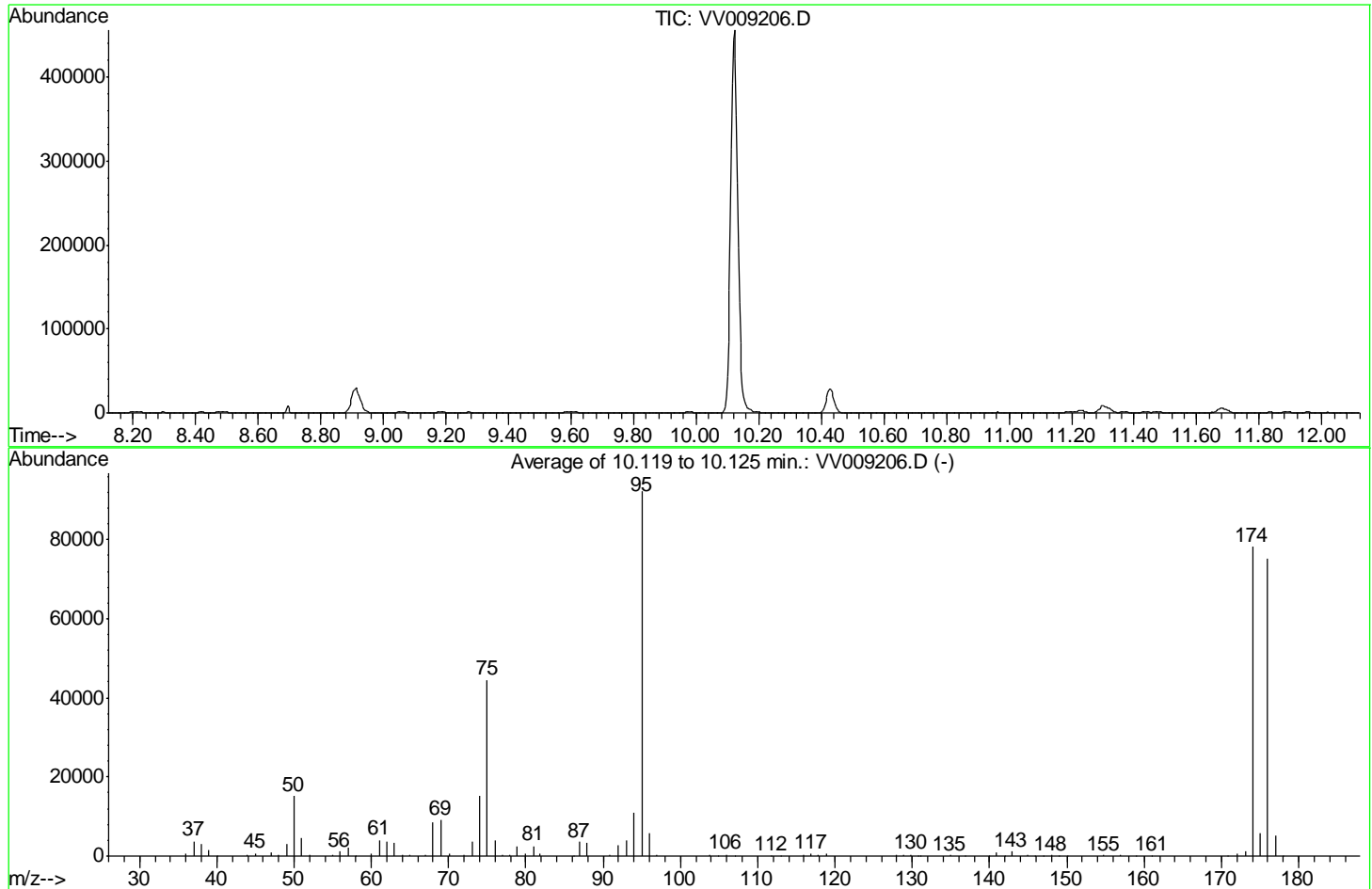


Data Path : Z:\VOASRV\HPCHEM1\MSVOA V\DATA\VV010919\
 Data File : VV009206.D
 Acq On : 09 Jan 2019 09:07
 Operator : SY/MD
 Sample : BFB71
 Misc : 5.00 G/10ML/MSVOA V/SOIL
 ALS Vial : 1 Sample Multiplier: 1

Instrument :
 MSVOA_V
 ClientSampleId :
 BFB71

Integration File: LSCINT.P

Method : Z:\VOASRV\HPCHEM1\MSVOA_V\METHOD\SOM2VLM010819S.M
 Title : VOC Analysis
 Last Update : Thu Jan 10 05:42:51 2019



AutoFind: Scans 2808, 2809, 2810; Background Corrected with Scan 2796

Target Mass	Rel. to Mass	Lower Limit%	Upper Limit%	Rel. Abn%	Raw Abn	Result Pass/Fail
50	95	15	40	16.5	15194	PASS
75	95	30	80	48.3	44509	PASS
95	95	100	100	100.0	92194	PASS
96	95	5	9	6.4	5870	PASS
173	174	0.00	2	1.5	1165	PASS
174	95	50	120	84.8	78154	PASS
175	174	5	9	7.4	5754	PASS
176	174	95	101	96.1	75096	PASS
177	176	5	9	6.8	5069	PASS

Scan 2796 (10.080 min): VV009206.D
BFB71

m/z	Abundance
43.90	186.0

Instrument :
MSVOA_V
ClientSampleId :
BFB71

m/z	Abundance
36.00	899.0
37.00	4083.0
38.00	4019.0
39.00	1488.0
40.00	203.0
44.00	733.0
45.00	788.0
47.00	1145.0
47.90	645.0
49.00	4400.0
50.00	18352.0
51.00	5861.0
52.10	185.0
54.90	277.0
56.00	1389.0
57.00	2634.0
60.00	869.0
61.00	4502.0
62.00	4628.0
63.00	3413.0
64.00	349.0
65.00	268.0
66.90	274.0
68.00	10176.0
69.00	10365.0
70.10	837.0
72.00	512.0
73.00	4754.0
74.00	17816.0
75.00	53224.0
76.00	4511.0
76.90	691.0
78.00	472.0
78.90	2890.0
80.00	843.0
80.90	2890.0
81.90	588.0
87.00	4534.0
87.90	4049.0
90.90	286.0
92.00	3086.0
93.00	4698.0
94.00	12525.0
95.00	111240.0
96.00	7241.0
97.20	251.0
103.80	464.0
104.70	149.0
105.90	525.0
106.70	119.0
110.90	125.0
114.80	131.0
115.90	393.0
116.90	697.0
117.90	458.0
118.80	625.0
127.90	341.0
128.80	190.0
130.00	375.0
130.90	170.0
134.80	235.0
136.80	261.0
140.90	1096.0
142.00	156.0
142.90	1482.0
143.90	119.0
144.80	151.0
145.80	211.0
147.80	281.0
150.00	177.0
155.10	261.0
156.90	199.0
170.50	108.0
170.90	147.0
172.00	614.0
173.10	1263.0
174.00	88144.0
175.00	7292.0
176.00	86800.0
177.00	5429.0
177.90	203.0

Instrument :
MSVOA_V
ClientSampleId :
BFB71

m/z	Abundance
36.00	886.0
37.00	4030.0
38.00	3976.0
39.10	1487.0
40.00	176.0
44.00	780.0
45.00	762.0
47.00	1192.0
47.90	612.0
49.00	4246.0
50.00	18248.0
51.00	5724.0
52.10	207.0
54.90	232.0
56.00	1367.0
57.00	2712.0
60.00	920.0
61.00	4504.0
62.00	4676.0
63.00	3352.0
64.00	384.0
65.10	230.0
66.90	266.0
68.00	10262.0
69.00	10199.0
70.10	835.0
72.00	484.0
73.00	4650.0
74.00	17744.0
75.00	54200.0
76.00	4472.0
76.90	651.0
78.00	493.0
78.90	2974.0
79.90	838.0
80.90	2824.0
81.90	585.0
87.00	4686.0
87.90	4282.0
90.90	311.0
92.00	3168.0
93.00	4836.0
94.00	12624.0
95.00	112416.0
96.00	7411.0
97.10	215.0
103.90	427.0
104.80	135.0
105.90	478.0
106.80	112.0
109.90	101.0
114.70	150.0
116.00	446.0
116.90	650.0
117.80	491.0
118.80	678.0
127.90	389.0
128.90	212.0
129.90	383.0
130.80	143.0
134.80	241.0
136.80	233.0
140.90	1125.0
142.00	164.0
142.90	1548.0
144.80	141.0
145.80	251.0
147.90	302.0
150.00	134.0
155.10	250.0
156.80	194.0
159.00	103.0
170.90	146.0
172.00	608.0
173.10	1276.0
174.00	92712.0
175.00	7319.0
176.00	89984.0
177.00	5567.0
178.00	187.0

Instrument :
MSVOA_V
ClientSampleId :
BFB71

m/z	Abundance
36.00	792.0
37.00	3579.0
38.00	3615.0
39.10	1315.0
39.90	160.0
44.00	714.0
44.90	720.0
47.00	1072.0
48.00	533.0
49.00	3608.0
50.00	16372.0
51.00	5131.0
52.20	213.0
54.90	211.0
56.00	1164.0
57.00	2581.0
60.00	813.0
61.00	4215.0
62.00	4204.0
63.00	3078.0
63.90	397.0
65.10	231.0
66.90	225.0
68.00	9422.0
69.00	9137.0
70.00	715.0
72.00	416.0
73.00	4239.0
74.00	16000.0
75.00	50144.0
76.00	4022.0
77.00	531.0
77.90	454.0
78.90	2829.0
79.90	828.0
81.00	2631.0
81.80	583.0
86.00	139.0
87.00	4451.0
88.00	3959.0
90.90	310.0
92.00	2883.0
93.00	4421.0
94.00	11659.0
95.00	102944.0
96.10	6903.0
97.00	168.0
103.90	432.0
104.80	107.0
105.90	401.0
106.80	105.0
114.70	151.0
116.00	445.0
116.90	603.0
117.80	441.0
118.80	630.0
127.90	366.0
128.90	220.0
129.90	354.0
130.80	127.0
134.80	218.0
136.90	186.0
140.90	1036.0
142.00	123.0
142.90	1405.0
144.70	116.0
145.80	257.0
147.90	278.0
149.80	117.0
153.80	106.0
154.80	216.0
155.20	220.0
156.90	188.0
170.90	104.0
172.10	616.0
173.10	1135.0
174.00	88368.0
175.00	6958.0
176.00	85040.0
177.00	5243.0
178.10	167.0

Instrument :
MSVOA_V
ClientSampleId :
BFB71