

Data Path : Z:\voasrv\HPCHEM1\MSVOA\_V\Data\VW012122\  
 Data File : VW024421.D  
 Acq On : 21 Jan 2022 12:57  
 Operator : SY/MD  
 Sample : VSTD01076  
 Misc : 5.0mL/MSVOA\_V/WATER  
 ALS Vial : 4 Sample Multiplier: 1

Instrument :  
 MSVOA\_V  
 ClientSampleId :  
 VSTD010276

Quant Time: Jan 24 02:14:01 2022  
 Quant Method : Z:\voasrv\HPCHEM1\MSVOA\_V\Method\SFAMVLM012122WMA.M  
 Quant Title : VOC Analysis  
 QLast Update : Mon Jan 24 02:12:48 2022  
 Response via : Initial Calibration

Compound	R.T.	QIon	Response	Conc	Units	Dev(Min)
Internal Standards						
1) 1,4-Difluorobenzene	5.616	114	145950	50.000	ug/L	0.00
28) Chlorobenzene-d5	8.850	117	138165	50.000	ug/L	0.00
58) 1,4-Dichlorobenzene-d4	11.246	152	81239	50.000	ug/L	0.00
System Monitoring Compounds						
4) Vinyl Chloride-d3	1.310	65	8924	9.298	ug/L	0.00
7) Chloroethane-d5	1.571	69	4970	8.997	ug/L	0.00
11) 1,1-Dichloroethene-d2	2.111	63	12887	8.384	ug/L	0.00
21) 2-Butanone-d5	3.908	46	2833	6.507	ug/L	0.02
24) Chloroform-d	4.349	84	19195	9.879	ug/L	0.00
26) 1,2-Dichloroethane-d4	5.034	65	13664	9.535	ug/L	0.00
32) Benzene-d6	5.050	84	33984	10.243	ug/L	0.00
36) 1,2-Dichloropropane-d6	6.072	67	7885	10.650	ug/L	0.00
41) Toluene-d8	7.317	98	34244	9.892	ug/L	0.00
43) trans-1,3-Dichloroprop...	7.625	79	5481	9.697	ug/L	0.00
47) 2-Hexanone-d5	8.095	63	6143	19.271	ug/L	0.00
56) 1,1,2,2-Tetrachloroeth...	10.214	84	10203	9.357	ug/L	0.00
66) 1,2-Dichlorobenzene-d4	11.622	152	16445	9.871	ug/L	0.00
Target Compounds						
						Qvalue
2) Dichlorodifluoromethane	1.130	85	15736	9.611	ug/L	96
3) Chloromethane	1.243	50	9475	9.552	ug/L	97
5) Vinyl chloride	1.314	62	10511	9.090	ug/L	99
6) Bromomethane	1.526	94	5795	9.224	ug/L	100
8) Chloroethane	1.590	64	4496	9.006	ug/L	93
9) Trichlorofluoromethane	1.757	101	19303	8.684	ug/L	100
10) 1,1,2-Trichloro-1,2,2-...	2.121	101	7184	9.053	ug/L	99
12) 1,1-Dichloroethene	2.121	96	6979	9.034	ug/L	98
13) Acetone	2.191	43	5297	9.819	ug/L	99
14) Carbon disulfide	2.297	76	16589	7.481	ug/L #	94
15) Methyl Acetate	2.439	43	3764	6.566	ug/L	96
16) Methylene chloride	2.510	84	6560	7.395	ug/L	94
17) trans-1,2-Dichloroethene	2.767	96	6504	7.211	ug/L	95
18) Methyl tert-butyl Ether	2.767	73	23719	7.750	ug/L	97
19) 1,1-Dichloroethane	3.191	63	14457	10.164	ug/L	96
20) cis-1,2-Dichloroethene	3.912	96	10438	10.123	ug/L	94
23) Bromochloromethane	4.256	128	5882	9.859	ug/L	100
25) Chloroform	4.375	83	19460	10.089	ug/L	100
27) 1,2-Dichloroethane	5.133	62	16794	9.857	ug/L	98
29) Cyclohexane	4.674	56	5673	5.088	ug/L #	1
30) 1,1,1-Trichloroethane	4.609	97	20390	9.600	ug/L #	72
31) Carbon tetrachloride	4.831	117	19657	9.450	ug/L	98
33) Benzene	5.101	78	35685	10.162	ug/L	100
34) Trichloroethene	5.915	95	11091	10.169	ug/L	94
35) Methylcyclohexane	6.133	83	15559	10.132	ug/L	96
37) 1,2-Dichloropropane	6.175	63	6164	9.477	ug/L #	96
38) Bromodichloromethane	6.510	83	13820	9.701	ug/L	94
39) cis-1,3-Dichloropropene	7.030	75	13779	9.943	ug/L	92
40) 4-Methyl-2-pentanone	7.227	43	17511	20.262	ug/L	99
42) Toluene	7.387	91	44007	10.090	ug/L	98
44) trans-1,3-Dichloropropene	7.654	75	14383	9.249	ug/L	97
45) 1,1,2-Trichloroethane	7.837	97	8880	10.105	ug/L	94

Data Path : Z:\voasrv\HPCHEM1\MSVOA\_V\Data\VW012122\  
 Data File : VW024421.D  
 Acq On : 21 Jan 2022 12:57  
 Operator : SY/MD  
 Sample : VSTD01076  
 Misc : 5.0mL/MSVOA\_V/WATER  
 ALS Vial : 4 Sample Multiplier: 1

Instrument :  
 MSVOA\_V  
 ClientSampleId :  
 VSTD010276

Quant Time: Jan 24 02:14:01 2022  
 Quant Method : Z:\voasrv\HPCHEM1\MSVOA\_V\Method\SFAMVLM012122WMA.M  
 Quant Title : VOC Analysis  
 QLast Update : Mon Jan 24 02:12:48 2022  
 Response via : Initial Calibration

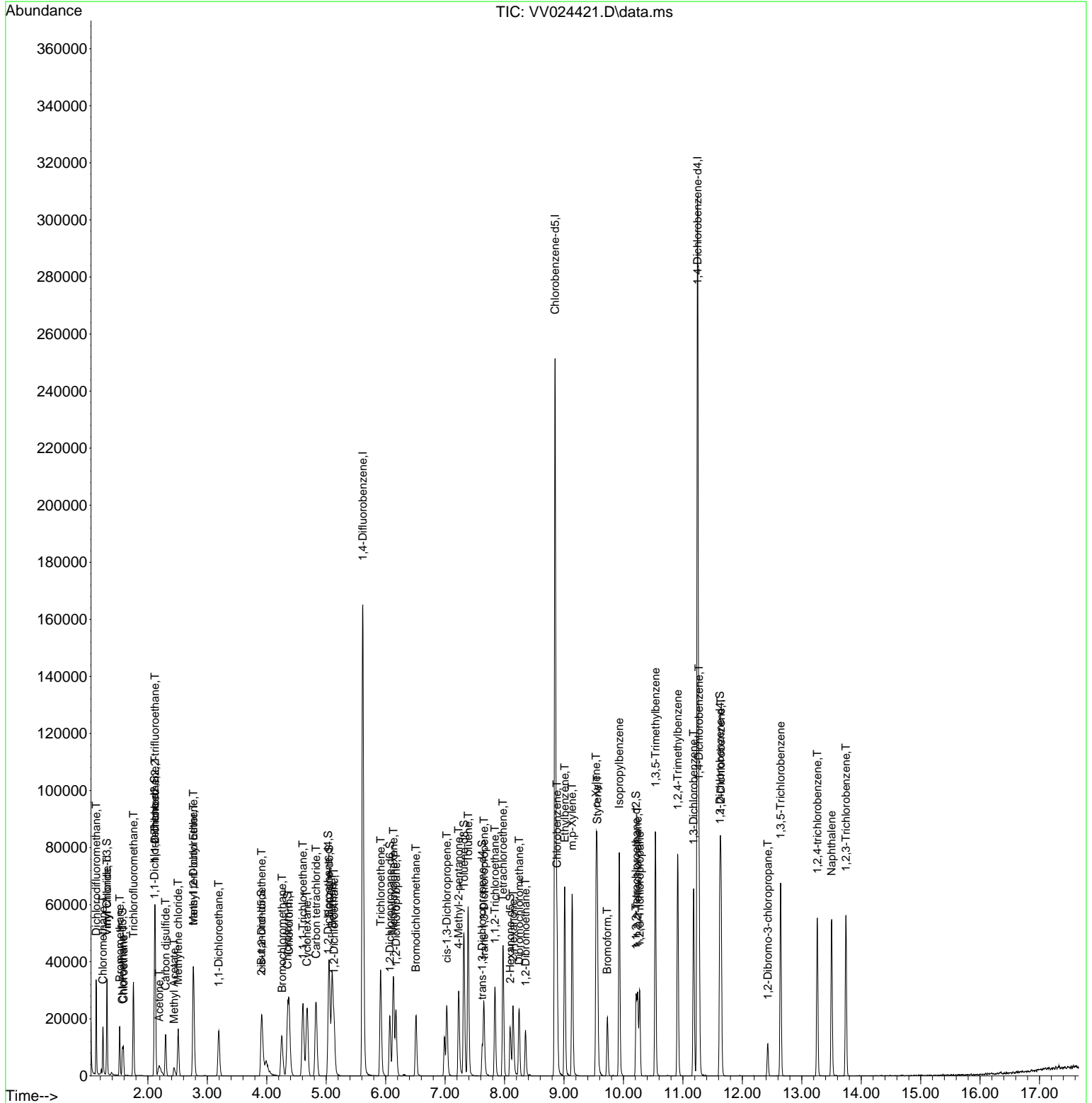
Compound	R.T.	QIon	Response	Conc	Units	Dev(Min)
46) Tetrachloroethene	7.976	164	10811	9.787	ug/L	94
48) 2-Hexanone	8.143	43	13380	19.431	ug/L	93
49) Dibromochloromethane	8.246	129	11858	9.566	ug/L	95
50) 1,2-Dibromoethane	8.352	107	9613	10.177	ug/L	91
51) Chlorobenzene	8.882	112	28967	9.660	ug/L	97
52) Ethylbenzene	9.011	91	46362	9.798	ug/L	98
53) m,p-Xylene	9.136	106	19533	9.820	ug/L	93
54) o-Xylene	9.542	106	18400	9.601	ug/L	97
55) Styrene	9.561	104	31734	9.724	ug/L	95
57) 1,1,2,2-Tetrachloroethane	10.239	83	10381	9.530	ug/L	94
59) Bromoform	9.728	173	8967	9.937	ug/L	98
60) Isopropylbenzene	9.931	105	49999	10.366	ug/L	98
61) 1,2,3-Trichloropropane	10.275	75	10661	10.806	ug/L	96
62) 1,3,5-Trimethylbenzene	10.538	105	44625	9.904	ug/L	98
63) 1,2,4-Trimethylbenzene	10.911	105	43961	9.792	ug/L	97
64) 1,3-Dichlorobenzene	11.181	146	27909	10.281	ug/L	95
65) 1,4-Dichlorobenzene	11.271	146	27569	10.134	ug/L	95
67) 1,2-Dichlorobenzene	11.641	146	26675	10.137	ug/L	100
68) 1,2-Dibromo-3-chloropr...	12.429	75	2873	8.914	ug/L #	83
69) 1,3,5-Trichlorobenzene	12.644	180	21875	10.018	ug/L	96
70) 1,2,4-trichlorobenzene	13.262	180	18424	9.506	ug/L	98
71) Naphthalene	13.503	128	46373	9.316	ug/L	100
72) 1,2,3-Trichlorobenzene	13.744	180	17827	9.653	ug/L	99

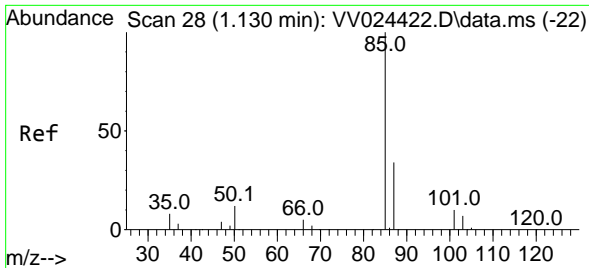
(#) = qualifier out of range (m) = manual integration (+) = signals summed

Data Path : Z:\voasrv\HPCHEM1\MSVOA\_V\Data\VV012122\  
 Data File : VV024421.D  
 Acq On : 21 Jan 2022 12:57  
 Operator : SY/MD  
 Sample : VSTD01076  
 Misc : 5.0mL/MSVOA\_V/WATER  
 ALS Vial : 4 Sample Multiplier: 1

Instrument :  
 MSVOA\_V  
 ClientSampleId :  
 VSTD010276

Quant Time: Jan 24 02:14:01 2022  
 Quant Method : Z:\voasrv\HPCHEM1\MSVOA\_V\Method\SFAMVLM012122WMA.M  
 Quant Title : VOC Analysis  
 QLast Update : Mon Jan 24 02:12:48 2022  
 Response via : Initial Calibration

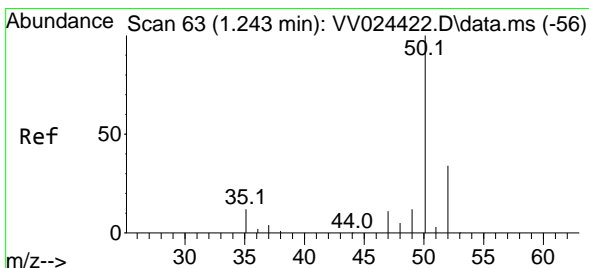
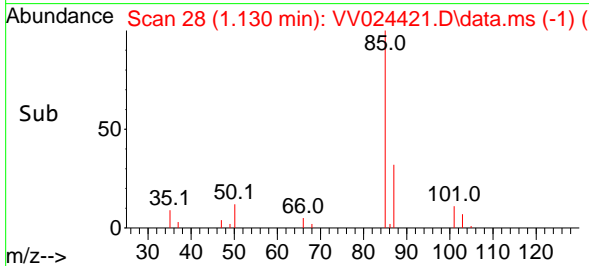
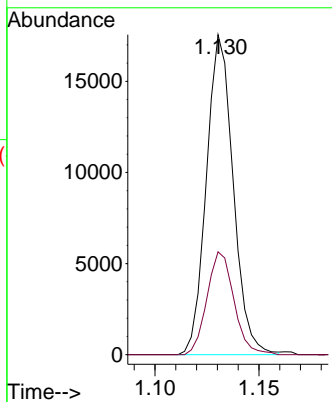
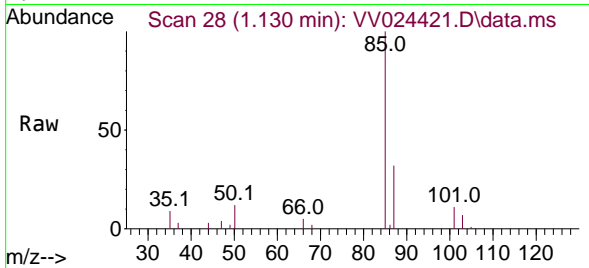




#2  
 Dichlorodifluoromethane  
 Concen: 9.611 ug/L  
 RT: 1.130 min Scan# 28  
 Delta R.T. -0.000 min  
 Lab File: VV024421.D  
 Acq: 21 Jan 2022 12:57

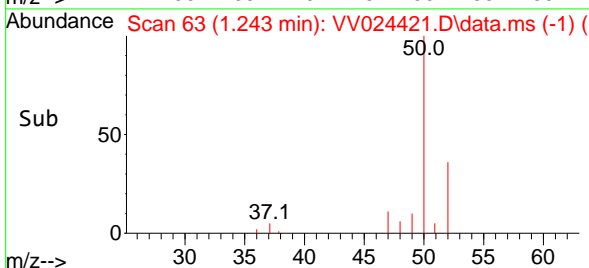
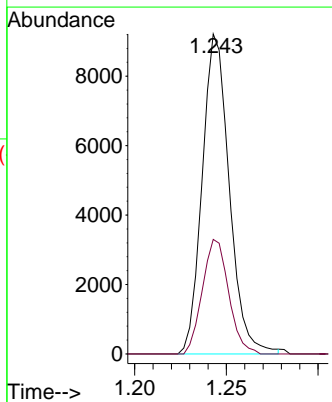
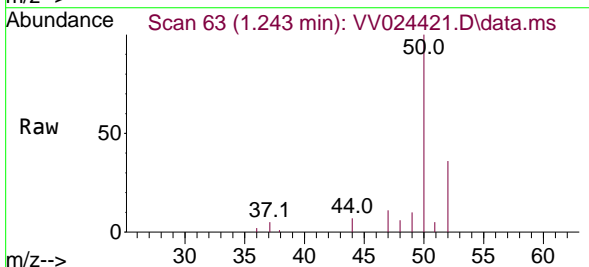
Instrument : MSVOA\_V  
 ClientSampleId : VSTD010276

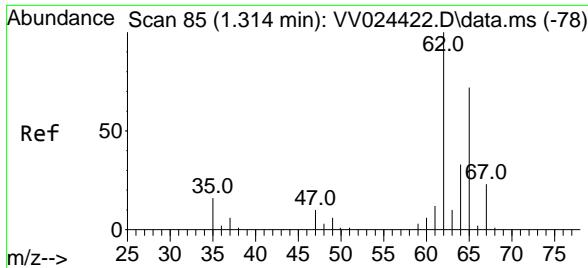
Tgt Ion: 85 Resp: 15736  
 Ion Ratio Lower Upper  
 85 100  
 87 32.3 27.6 41.4



#3  
 Chloromethane  
 Concen: 9.552 ug/L  
 RT: 1.243 min Scan# 63  
 Delta R.T. -0.000 min  
 Lab File: VV024421.D  
 Acq: 21 Jan 2022 12:57

Tgt Ion: 50 Resp: 9475  
 Ion Ratio Lower Upper  
 50 100  
 52 35.8 23.9 44.5

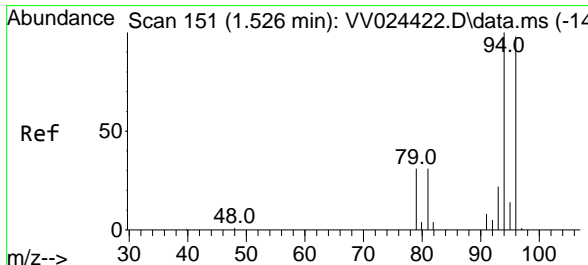
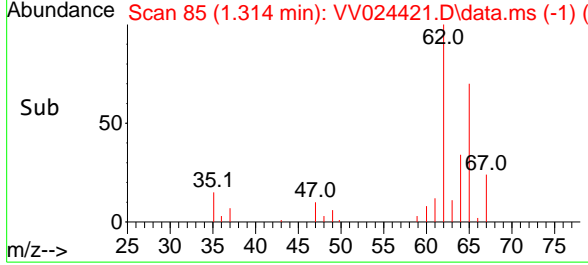
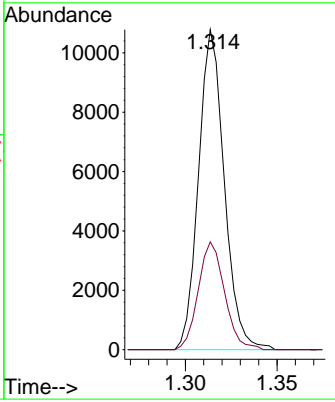
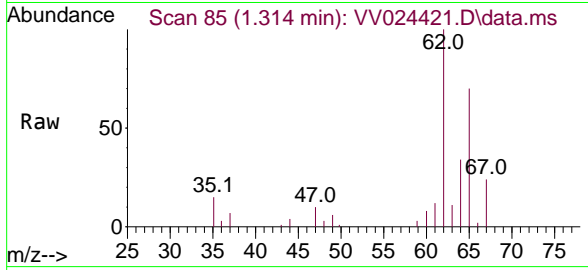




#5  
 Vinyl chloride  
 Concen: 9.090 ug/L  
 RT: 1.314 min Scan# 81  
 Delta R.T. -0.000 min  
 Lab File: VV024421.D  
 Acq: 21 Jan 2022 12:57

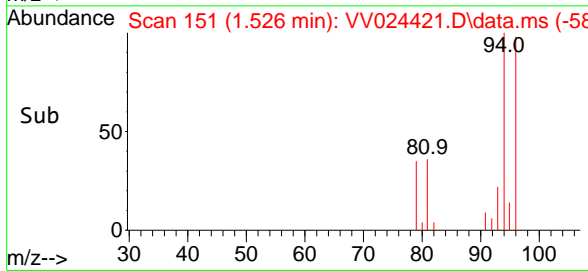
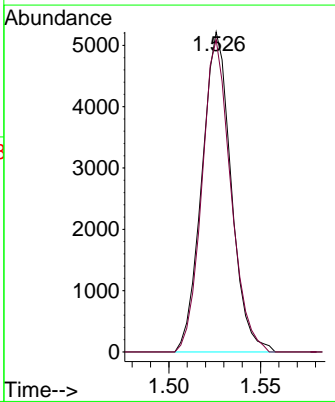
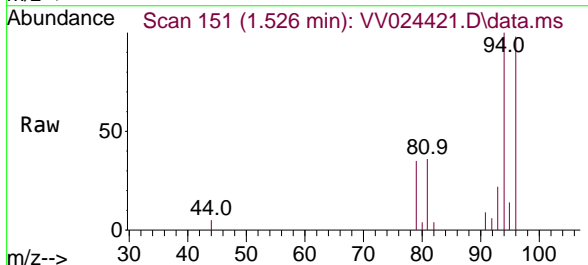
Instrument : MSVOA\_V  
 ClientSampleId : VSTD010276

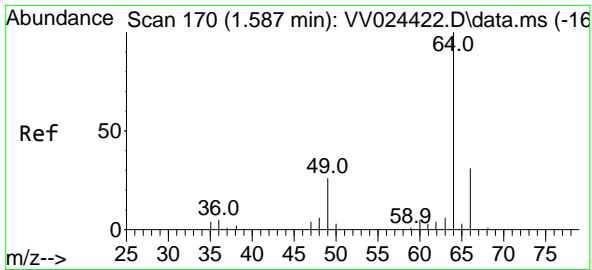
Tgt Ion	Resp	Lower	Upper
62	10511		
64	33.7	23.3	43.3



#6  
 Bromomethane  
 Concen: 9.224 ug/L  
 RT: 1.526 min Scan# 151  
 Delta R.T. -0.000 min  
 Lab File: VV024421.D  
 Acq: 21 Jan 2022 12:57

Tgt Ion	Resp	Lower	Upper
94	5795		
96	97.6	68.3	126.9

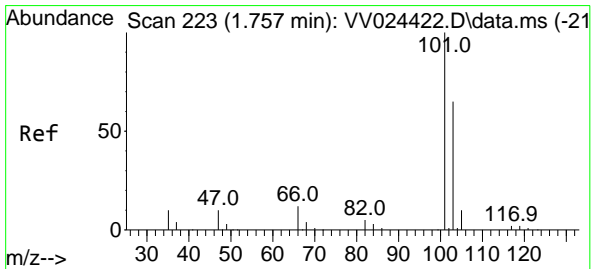
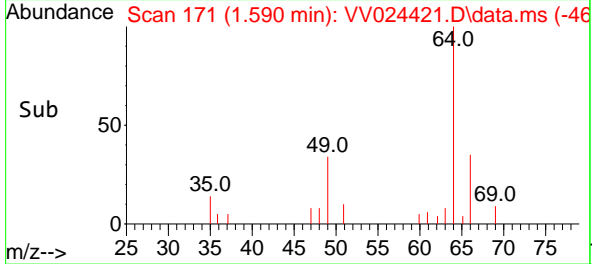
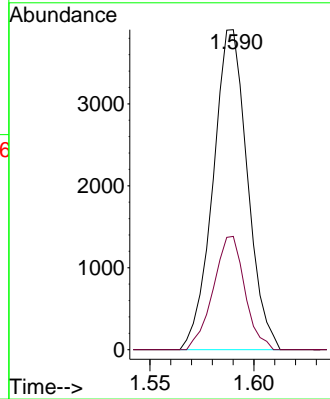
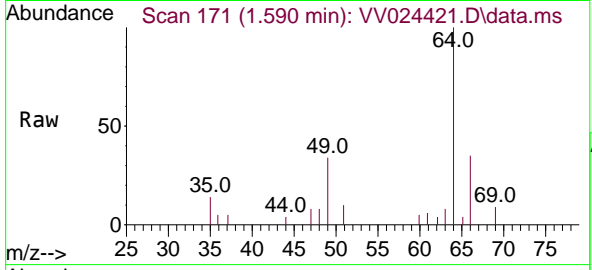




#8  
 Chloroethane  
 Concen: 9.006 ug/L  
 RT: 1.590 min Scan# 171  
 Delta R.T. 0.003 min  
 Lab File: VV024421.D  
 Acq: 21 Jan 2022 12:57

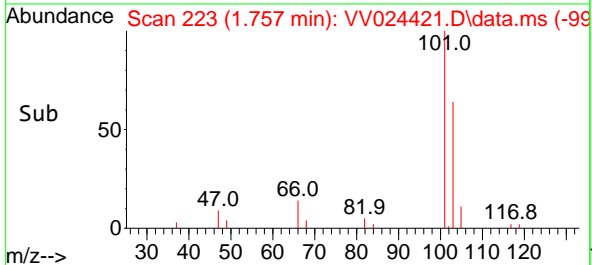
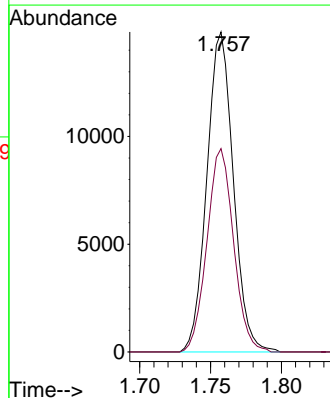
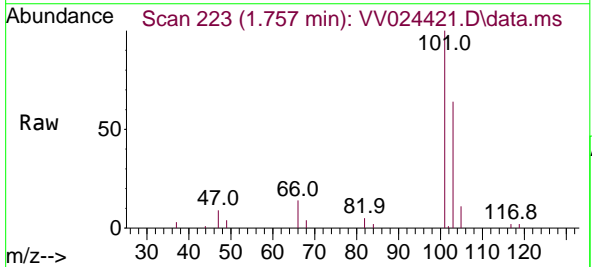
Instrument : MSVOA\_V  
 ClientSampleId : VSTD010276

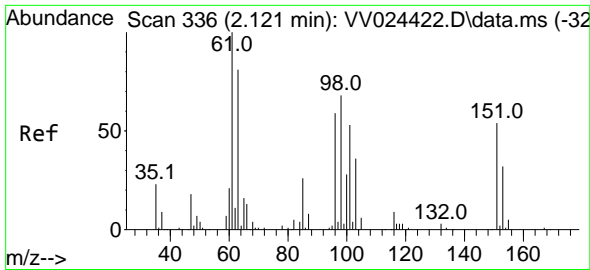
Tgt Ion: 64 Resp: 4496  
 Ion Ratio Lower Upper  
 64 100  
 66 35.4 21.9 40.7



#9  
 Trichlorofluoromethane  
 Concen: 8.684 ug/L  
 RT: 1.757 min Scan# 223  
 Delta R.T. -0.000 min  
 Lab File: VV024421.D  
 Acq: 21 Jan 2022 12:57

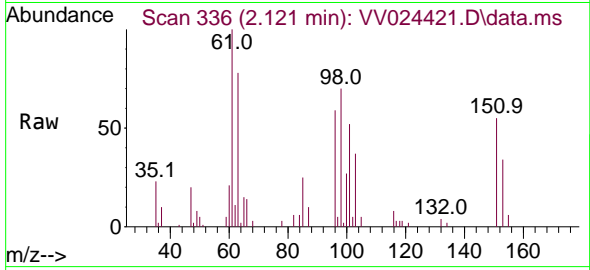
Tgt Ion: 101 Resp: 19303  
 Ion Ratio Lower Upper  
 101 100  
 103 63.9 51.4 77.0



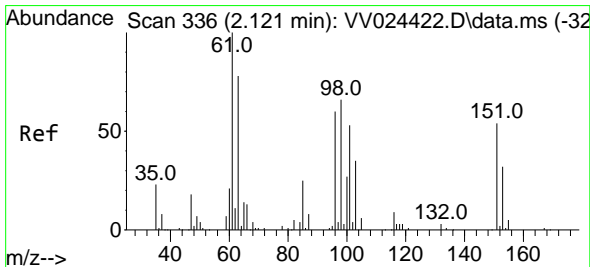
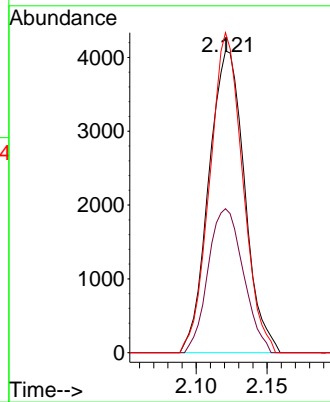
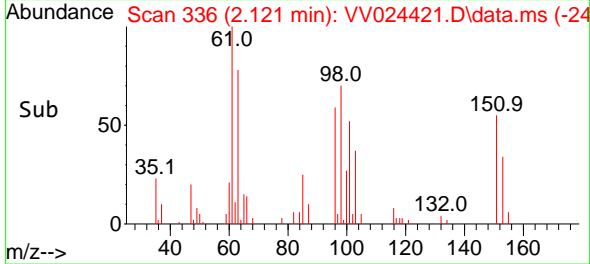


#10  
 1,1,2-Trichloro-1,2,2-trifluoroethane  
 Concen: 9.053 ug/L  
 RT: 2.121 min Scan# 336  
 Delta R.T. -0.000 min  
 Lab File: VV024421.D  
 Acq: 21 Jan 2022 12:57

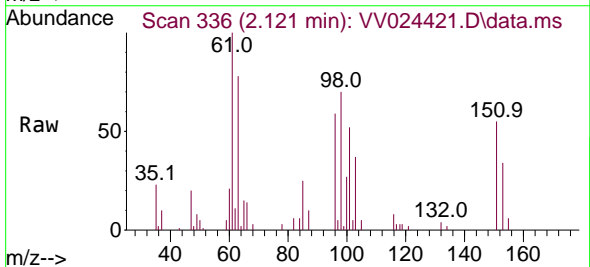
Instrument : MSVOA\_V  
 ClientSampleId : VSTD010276



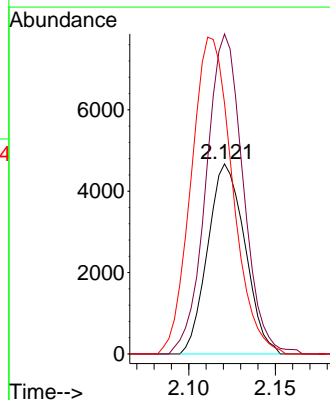
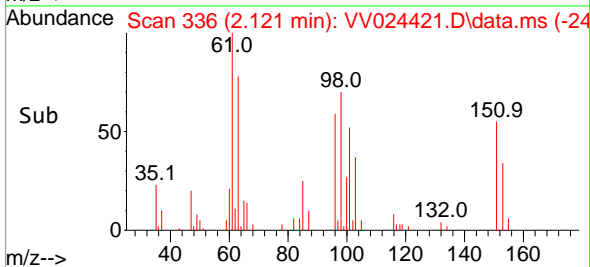
Tgt Ion:101 Resp: 7184  
 Ion Ratio Lower Upper  
 101 100  
 85 46.9 38.6 58.0  
 151 97.3 77.8 116.6

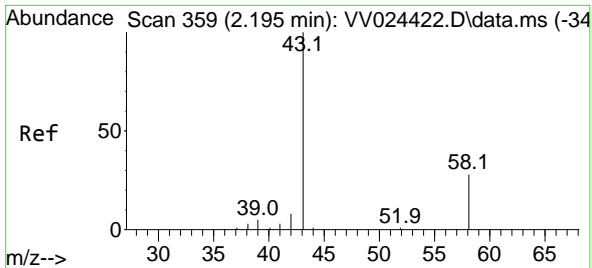


#12  
 1,1-Dichloroethene  
 Concen: 9.034 ug/L  
 RT: 2.121 min Scan# 336  
 Delta R.T. -0.000 min  
 Lab File: VV024421.D  
 Acq: 21 Jan 2022 12:57



Tgt Ion: 96 Resp: 6979  
 Ion Ratio Lower Upper  
 96 100  
 61 168.4 117.8 218.8  
 63 132.0 96.4 179.0

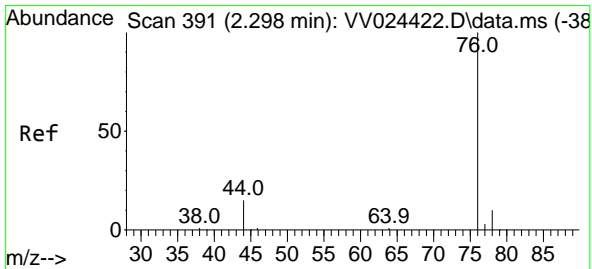
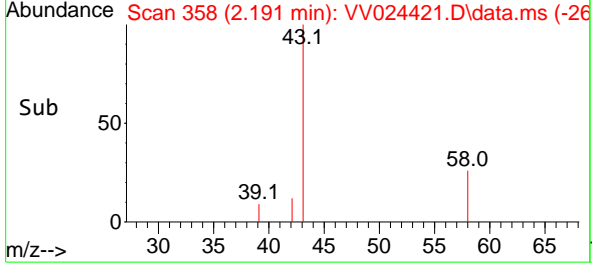
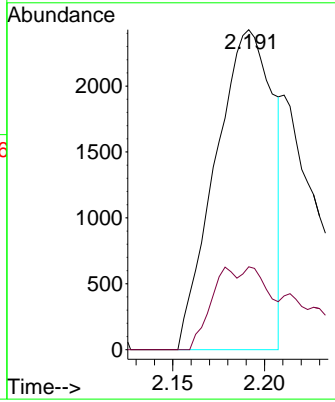
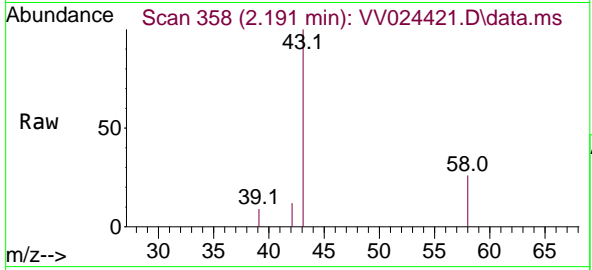




#13  
 Acetone  
 Concen: 9.819 ug/L  
 RT: 2.191 min Scan# 311  
 Delta R.T. -0.003 min  
 Lab File: VV024421.D  
 Acq: 21 Jan 2022 12:57

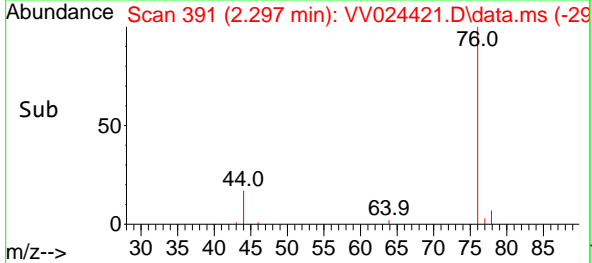
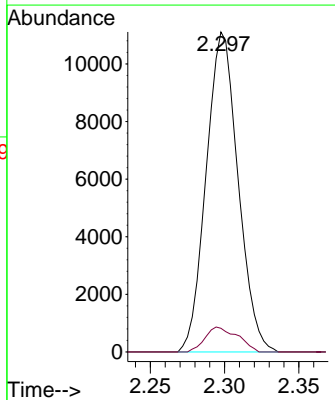
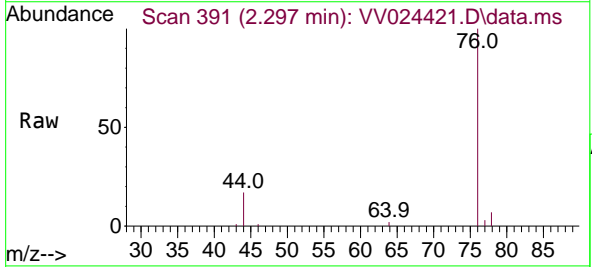
Instrument : MSVOA\_V  
 ClientSampleId : VSTD010276

Tgt Ion: 43 Resp: 5297  
 Ion Ratio Lower Upper  
 43 100  
 58 12.0 0.0 23.4

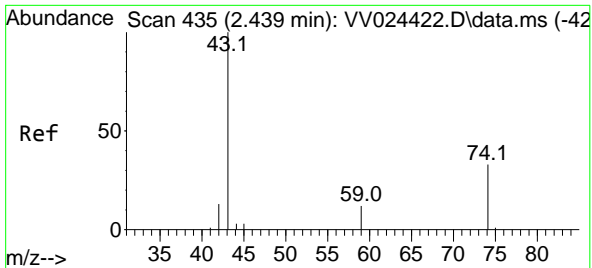


#14  
 Carbon disulfide  
 Concen: 7.481 ug/L  
 RT: 2.297 min Scan# 391  
 Delta R.T. -0.000 min  
 Lab File: VV024421.D  
 Acq: 21 Jan 2022 12:57

Tgt Ion: 76 Resp: 16589  
 Ion Ratio Lower Upper  
 76 100  
 78 7.4 7.7 11.5#

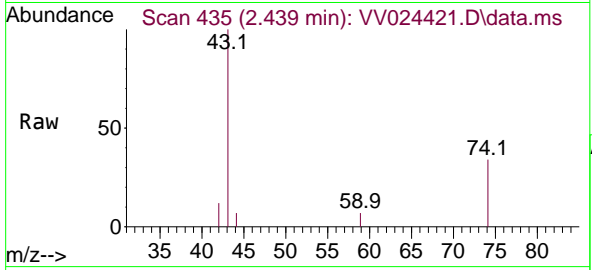




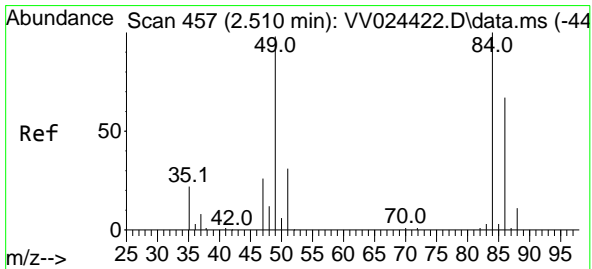
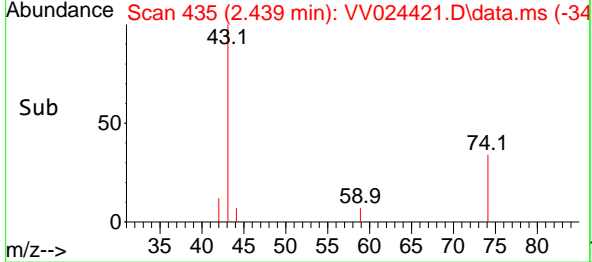
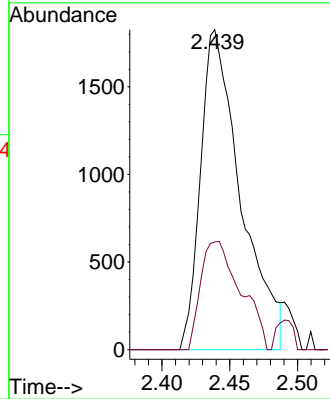


#15  
 Methyl Acetate  
 Concen: 6.566 ug/L  
 RT: 2.439 min Scan# 41  
 Delta R.T. -0.000 min  
 Lab File: VV024421.D  
 Acq: 21 Jan 2022 12:57

Instrument : MSVOA\_V  
 ClientSampleId : VSTD010276

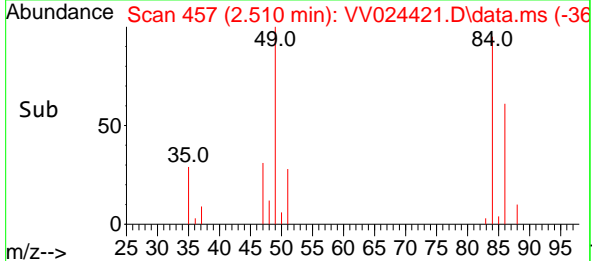
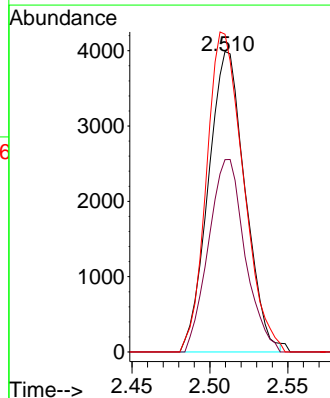
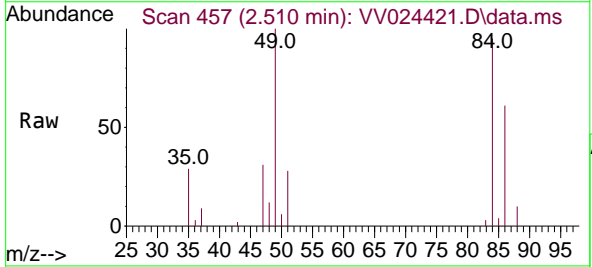


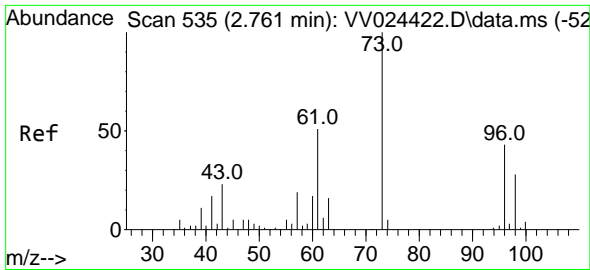
Tgt Ion: 43 Resp: 3764  
 Ion Ratio Lower Upper  
 43 100  
 74 28.9 24.7 37.1



#16  
 Methylene chloride  
 Concen: 7.395 ug/L  
 RT: 2.510 min Scan# 457  
 Delta R.T. -0.000 min  
 Lab File: VV024421.D  
 Acq: 21 Jan 2022 12:57

Tgt Ion: 84 Resp: 6560  
 Ion Ratio Lower Upper  
 84 100  
 86 64.0 47.0 87.4  
 49 105.8 68.5 127.3

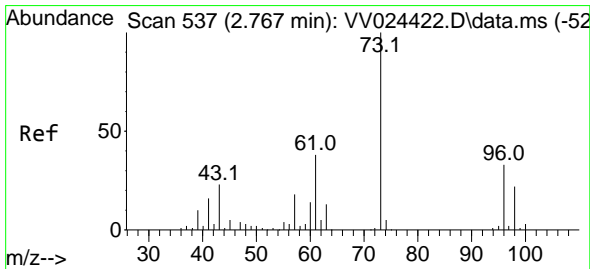
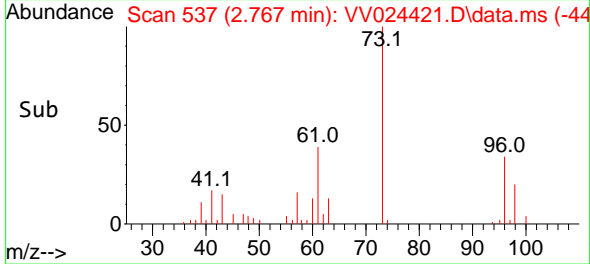
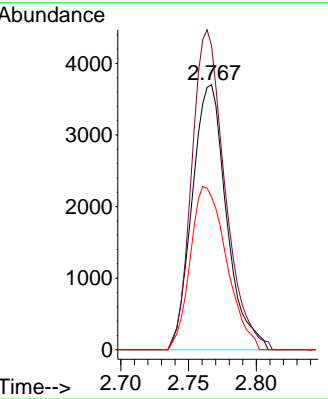
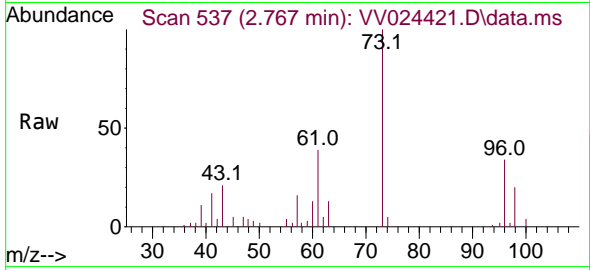




#17  
 trans-1,2-Dichloroethene  
 Concen: 7.211 ug/L  
 RT: 2.767 min Scan# 51  
 Delta R.T. 0.006 min  
 Lab File: VV024421.D  
 Acq: 21 Jan 2022 12:57

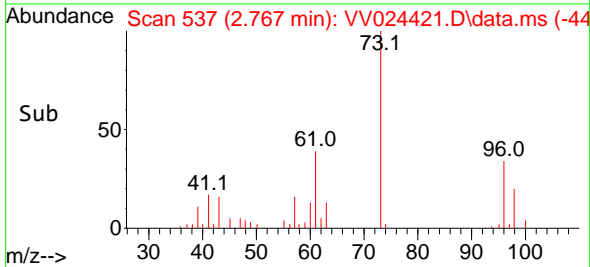
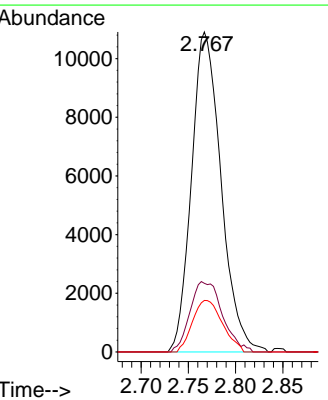
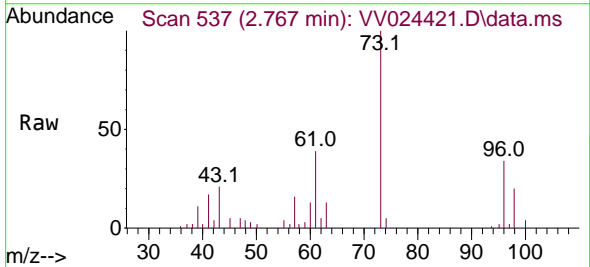
Instrument : MSVOA\_V  
 ClientSampleId : VSTD010276

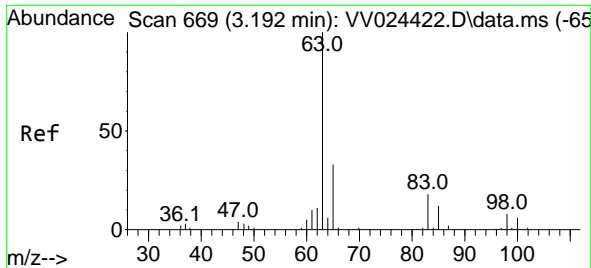
Tgt Ion	Resp	Lower	Upper
96	6504		
96	100		
61	114.7	83.0	154.1
98	57.6	45.1	83.7



#18  
 Methyl tert-butyl Ether  
 Concen: 7.750 ug/L  
 RT: 2.767 min Scan# 537  
 Delta R.T. -0.000 min  
 Lab File: VV024421.D  
 Acq: 21 Jan 2022 12:57

Tgt Ion	Resp	Lower	Upper
73	23719		
73	100		
43	24.1	18.3	27.5
57	16.3	14.2	21.2





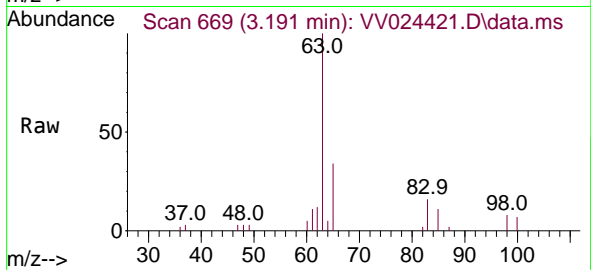
#19  
 1,1-Dichloroethane  
 Concen: 10.164 ug/L  
 RT: 3.191 min Scan# 609  
 Delta R.T. -0.000 min  
 Lab File: VV024421.D  
 Acq: 21 Jan 2022 12:57

Instrument :

MSVOA\_V

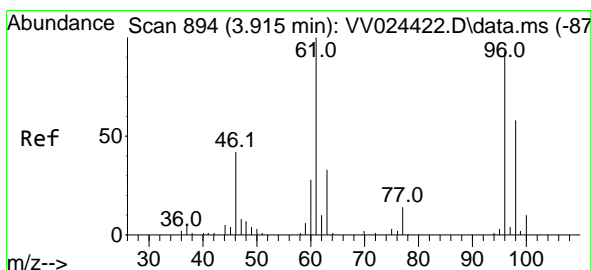
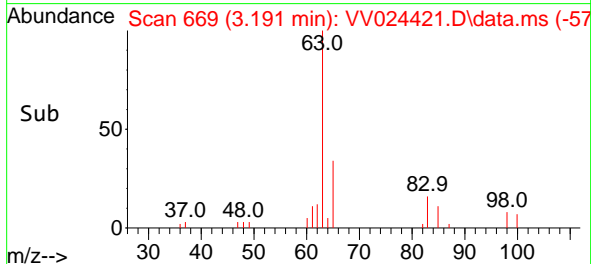
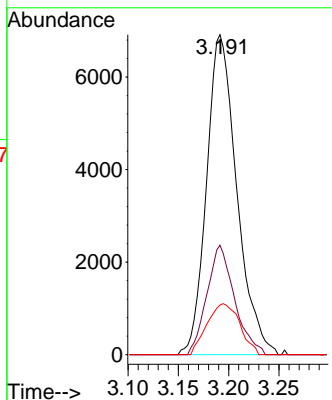
ClientSampleId :

VSTD010276



Tgt Ion: 63 Resp: 14457

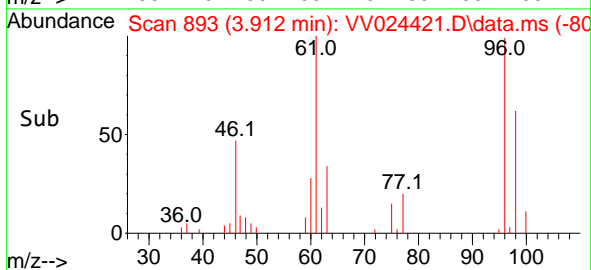
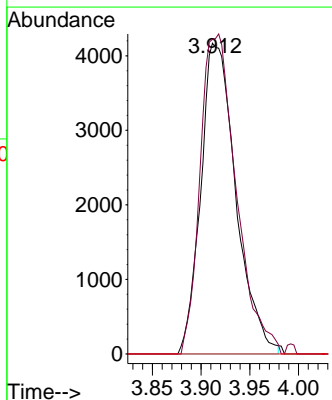
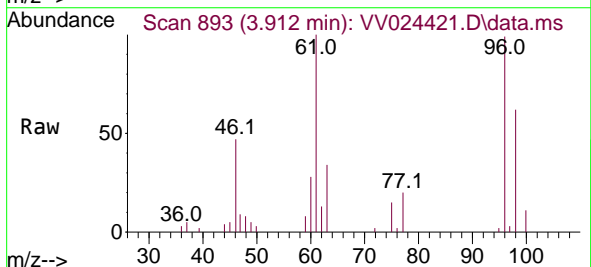
Ion	Ratio	Lower	Upper
63	100		
65	34.2	22.7	42.3
83	15.5	12.7	23.7

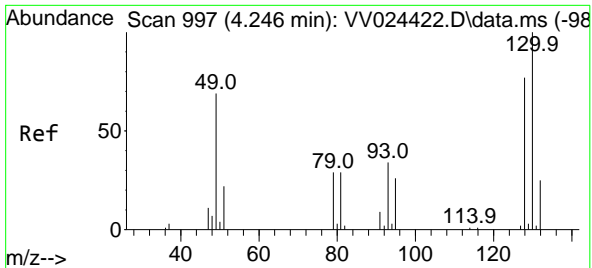


#20  
 cis-1,2-Dichloroethene  
 Concen: 10.123 ug/L  
 RT: 3.912 min Scan# 893  
 Delta R.T. -0.003 min  
 Lab File: VV024421.D  
 Acq: 21 Jan 2022 12:57

Tgt Ion: 96 Resp: 10438

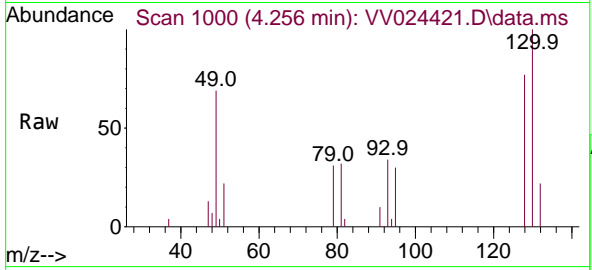
Ion	Ratio	Lower	Upper
96	100		
61	101.2	75.4	140.0
68	0.0	0.0	0.0





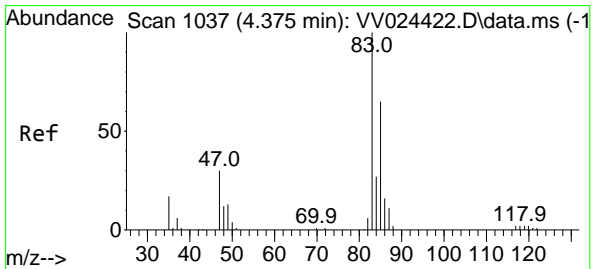
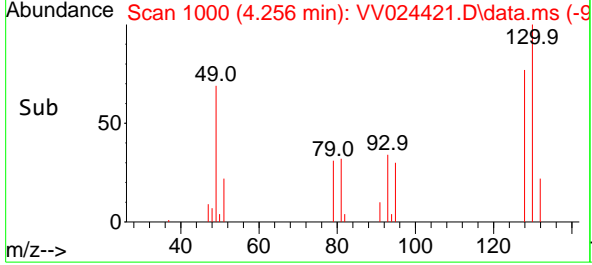
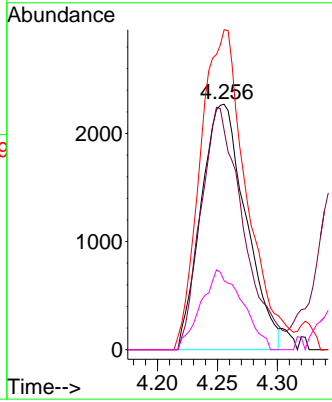
#23  
 Bromochloromethane  
 Concen: 9.859 ug/L  
 RT: 4.256 min Scan# 1000  
 Delta R.T. 0.009 min  
 Lab File: VV024421.D  
 Acq: 21 Jan 2022 12:57

Instrument : MSVOA\_V  
 ClientSampleId : VSTD010276



Tgt Ion:128 Resp: 5882

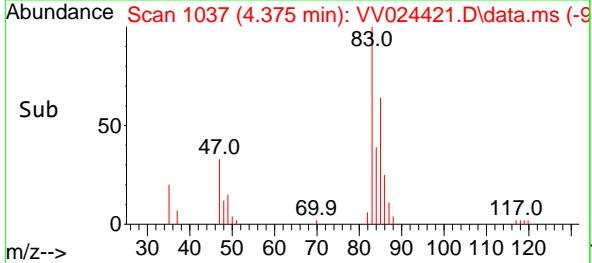
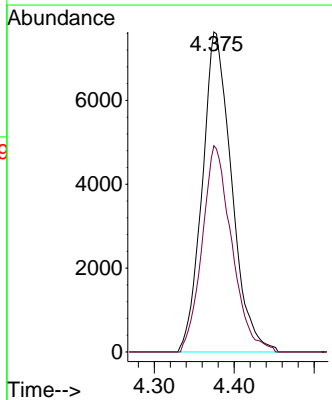
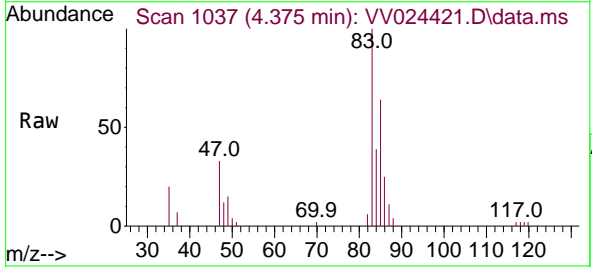
Ion	Ratio	Lower	Upper
128	100		
49	89.4	62.4	115.8
130	130.4	91.0	169.0
51	28.1	23.0	34.6

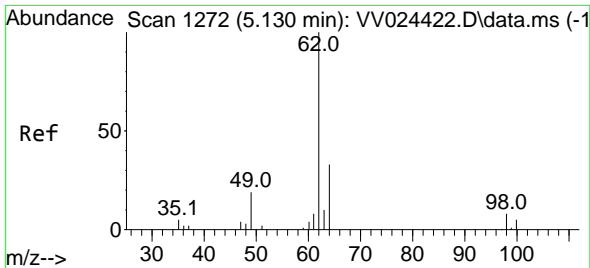


#25  
 Chloroform  
 Concen: 10.089 ug/L  
 RT: 4.375 min Scan# 1037  
 Delta R.T. -0.000 min  
 Lab File: VV024421.D  
 Acq: 21 Jan 2022 12:57

Tgt Ion: 83 Resp: 19460

Ion	Ratio	Lower	Upper
83	100		
85	64.4	45.1	83.9

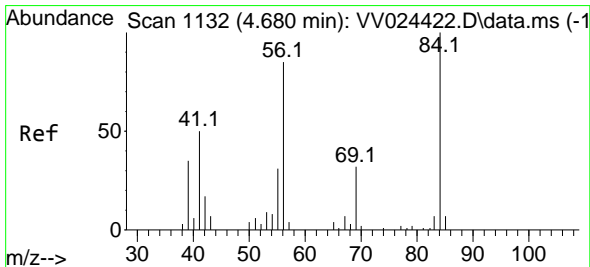
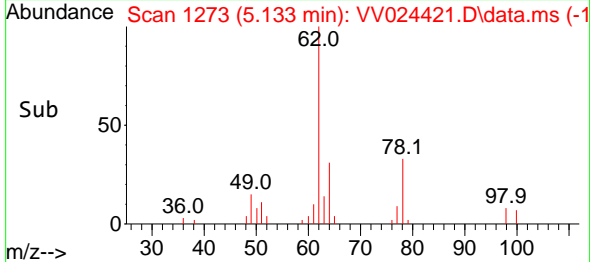
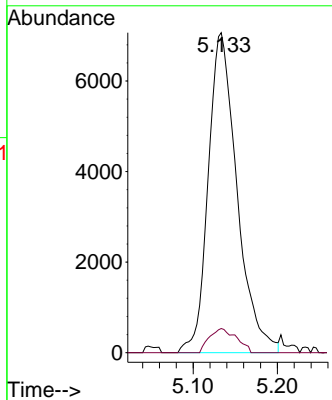
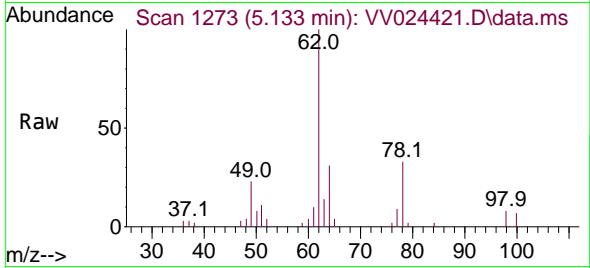




#27  
 1,2-Dichloroethane  
 Concen: 9.857 ug/L  
 RT: 5.133 min Scan# 1130  
 Delta R.T. 0.003 min  
 Lab File: VV024421.D  
 Acq: 21 Jan 2022 12:57

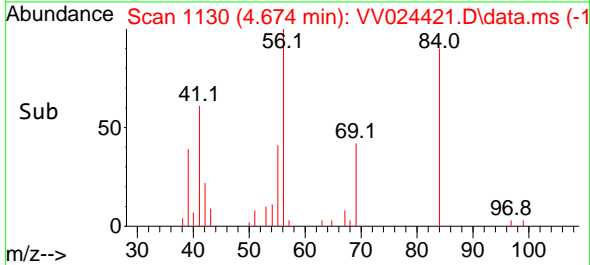
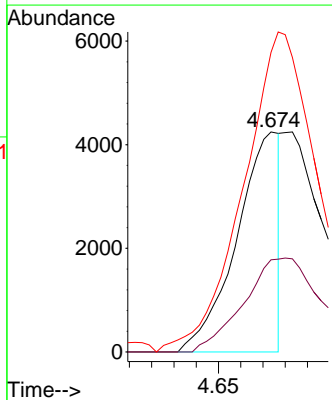
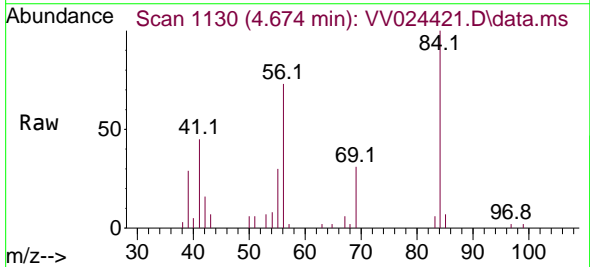
Instrument : MSVOA\_V  
 ClientSampleId : VSTD010276

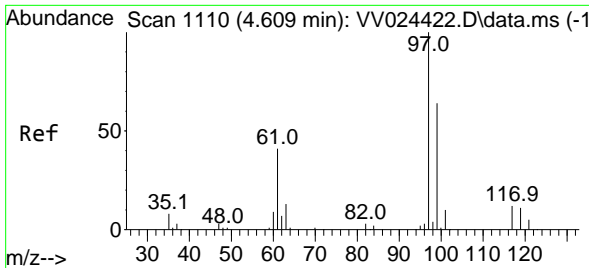
Tgt Ion	Resp	Lower	Upper
62	100		
98	7.5	6.6	9.8



#29  
 Cyclohexane  
 Concen: 5.088 ug/L  
 RT: 4.674 min Scan# 1130  
 Delta R.T. -0.007 min  
 Lab File: VV024421.D  
 Acq: 21 Jan 2022 12:57

Tgt Ion	Resp	Lower	Upper
56	100		
69	76.1	29.5	44.3#
84	255.0	95.8	143.8#





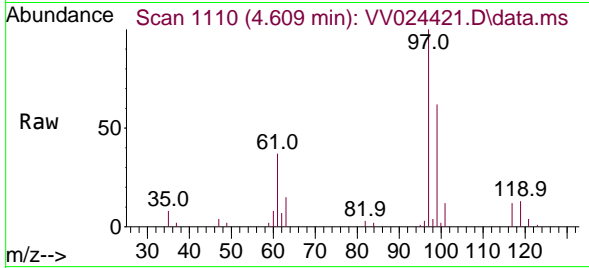
#30  
 1,1,1-Trichloroethane  
 Concen: 9.600 ug/L  
 RT: 4.609 min Scan# 1110  
 Delta R.T. -0.000 min  
 Lab File: VV024421.D  
 Acq: 21 Jan 2022 12:57

Instrument :

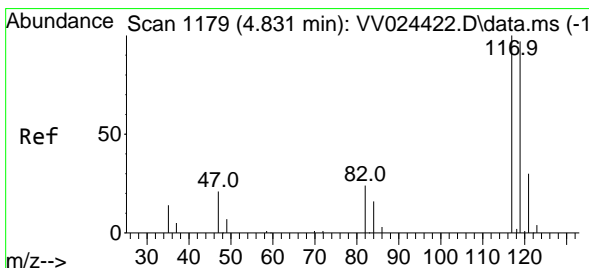
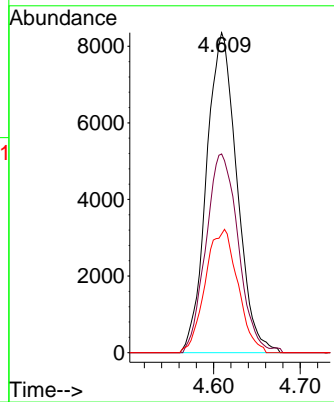
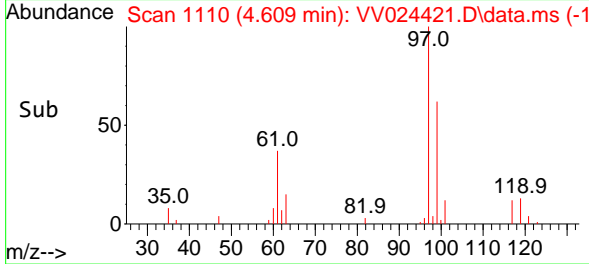
MSVOA\_V

ClientSampleId :

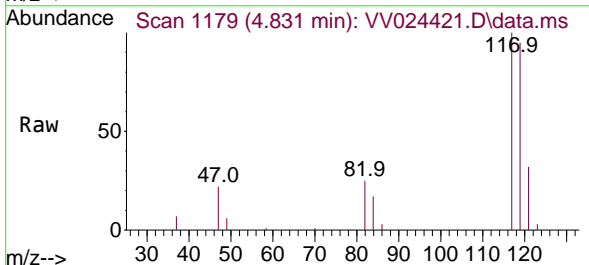
VSTD010276



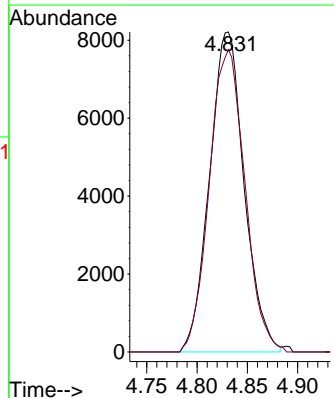
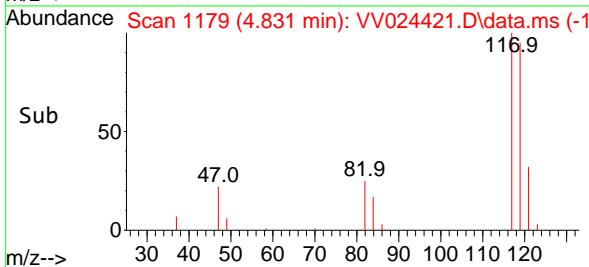
Tgt Ion: 97 Resp: 20390  
 Ion Ratio Lower Upper  
 97 100  
 99 65.7 50.5 75.7  
 61 0.0 32.5 48.7#

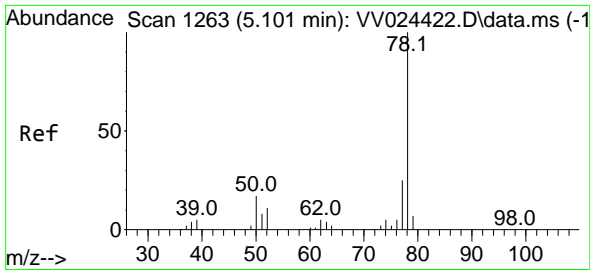


#31  
 Carbon tetrachloride  
 Concen: 9.450 ug/L  
 RT: 4.831 min Scan# 1179  
 Delta R.T. -0.000 min  
 Lab File: VV024421.D  
 Acq: 21 Jan 2022 12:57



Tgt Ion: 117 Resp: 19657  
 Ion Ratio Lower Upper  
 117 100  
 119 97.1 79.0 118.4

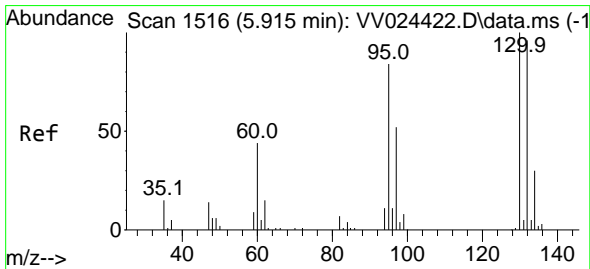
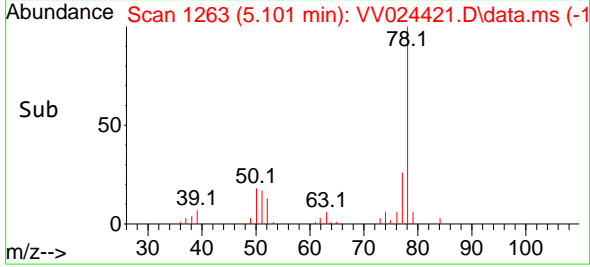
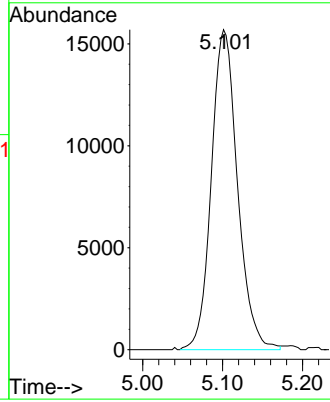
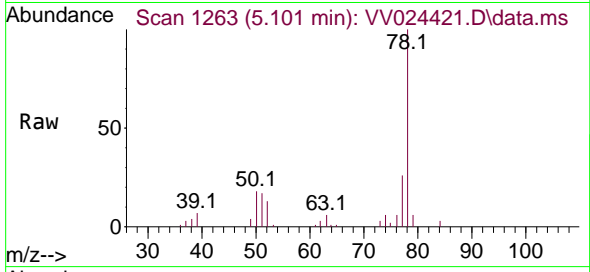




#33  
Benzene  
Concen: 10.162 ug/L  
RT: 5.101 min Scan# 1263  
Delta R.T. -0.000 min  
Lab File: VV024421.D  
Acq: 21 Jan 2022 12:57

Instrument : MSVOA\_V  
ClientSampleId : VSTD010276

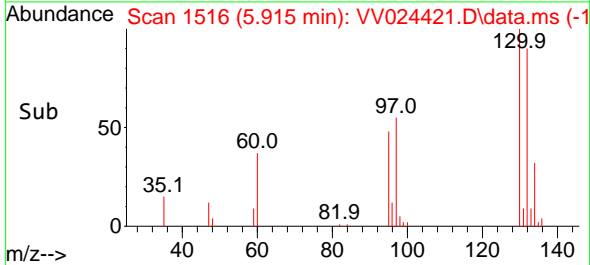
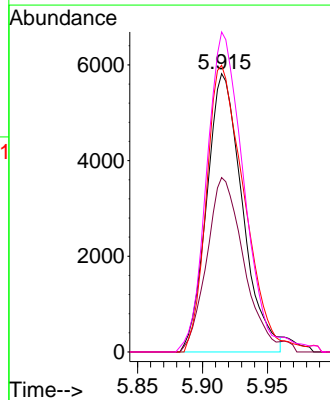
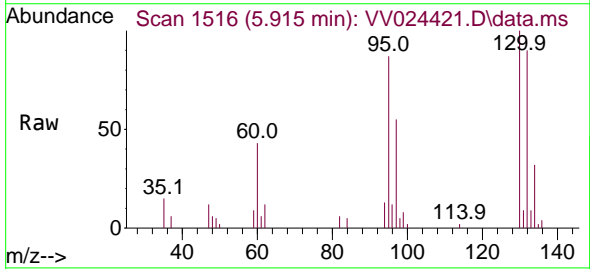
Tgt Ion: 78 Resp: 35685

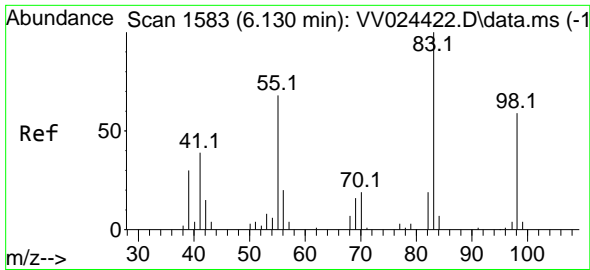


#34  
Trichloroethene  
Concen: 10.169 ug/L  
RT: 5.915 min Scan# 1516  
Delta R.T. -0.000 min  
Lab File: VV024421.D  
Acq: 21 Jan 2022 12:57

Tgt Ion: 95 Resp: 11091

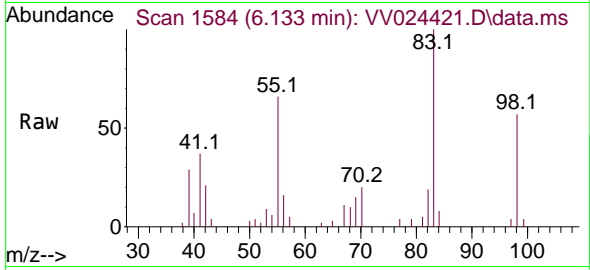
Ion	Ratio	Lower	Upper
95	100		
97	62.7	43.5	80.9
132	103.0	80.5	149.5
130	115.0	83.8	155.6



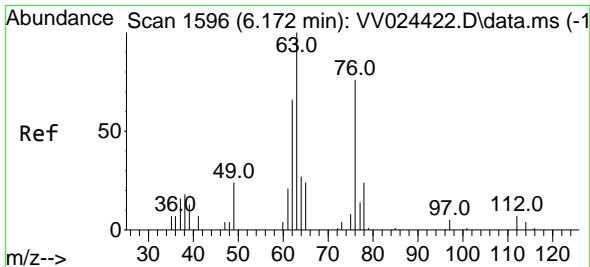
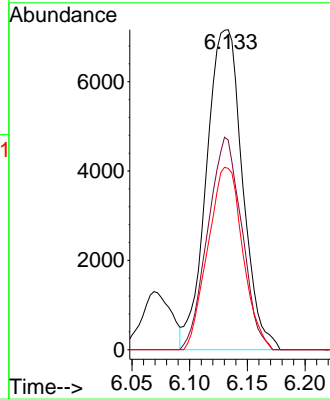
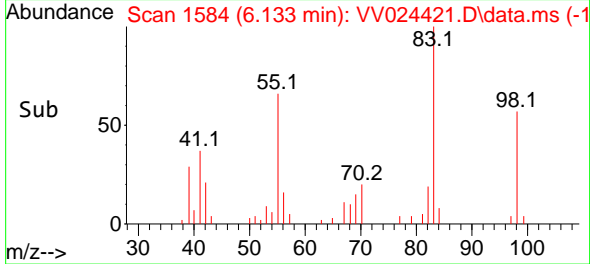


#35  
 Methylcyclohexane  
 Concen: 10.132 ug/L  
 RT: 6.133 min Scan# 1583  
 Delta R.T. 0.003 min  
 Lab File: VV024421.D  
 Acq: 21 Jan 2022 12:57

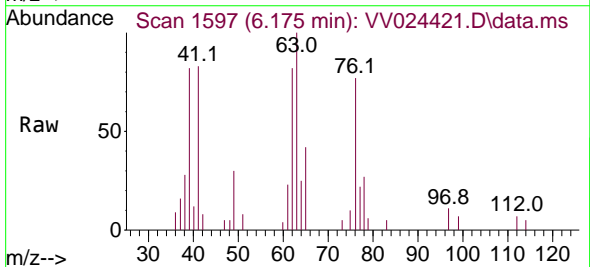
Instrument : MSVOA\_V  
 ClientSampleId : VSTD010276



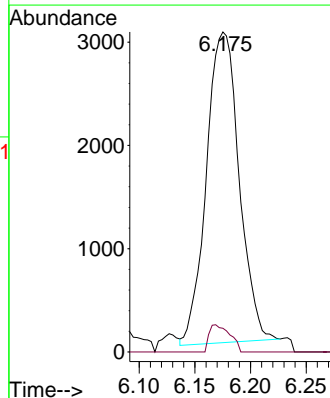
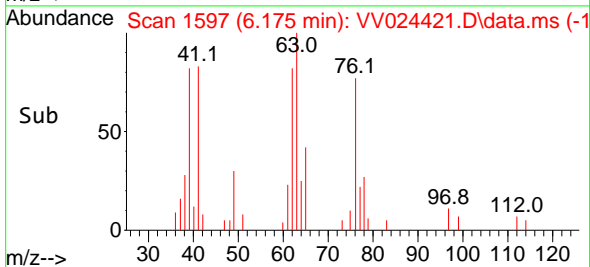
Tgt Ion: 83 Resp: 15559  
 Ion Ratio Lower Upper  
 83 100  
 55 62.4 53.0 79.4  
 98 55.0 46.2 69.2



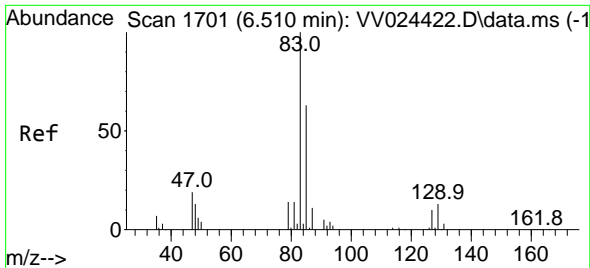
#37  
 1,2-Dichloropropane  
 Concen: 9.477 ug/L  
 RT: 6.175 min Scan# 1597  
 Delta R.T. 0.003 min  
 Lab File: VV024421.D  
 Acq: 21 Jan 2022 12:57



Tgt Ion: 63 Resp: 6164  
 Ion Ratio Lower Upper  
 63 100  
 112 5.5 5.7 8.5#



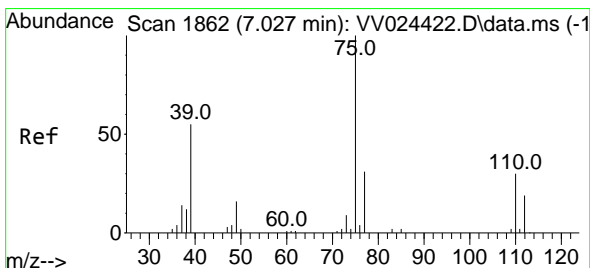
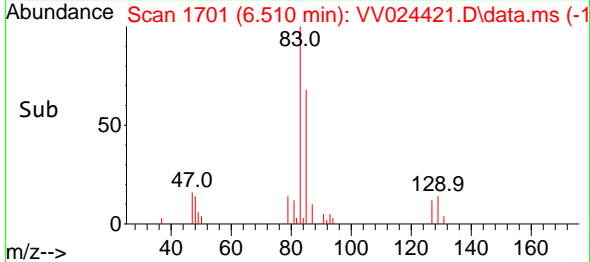
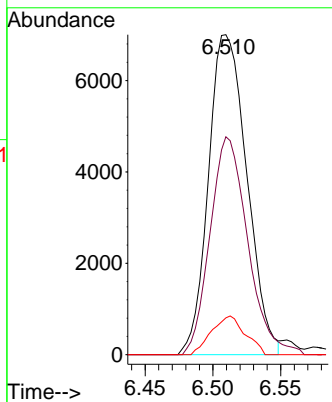
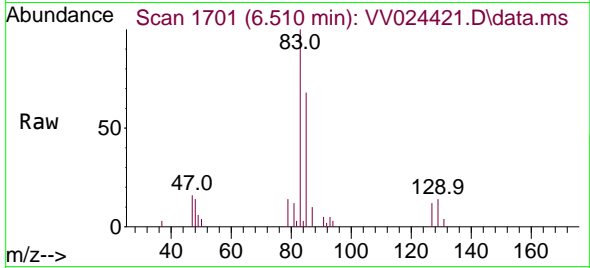




#38  
 Bromodichloromethane  
 Concen: 9.701 ug/L  
 RT: 6.510 min Scan# 1701  
 Delta R.T. -0.000 min  
 Lab File: VV024421.D  
 Acq: 21 Jan 2022 12:57

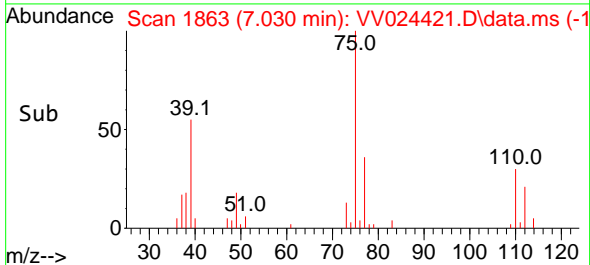
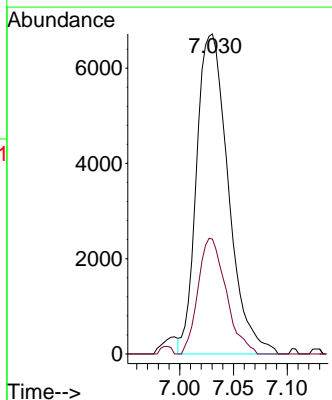
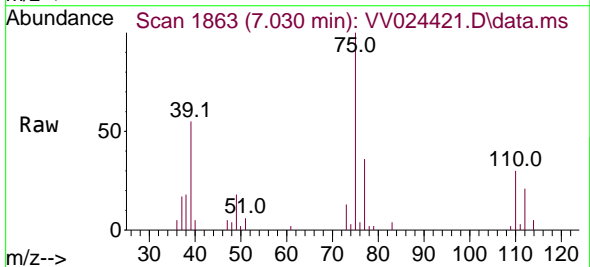
Instrument : MSVOA\_V  
 ClientSampleId : VSTD010276

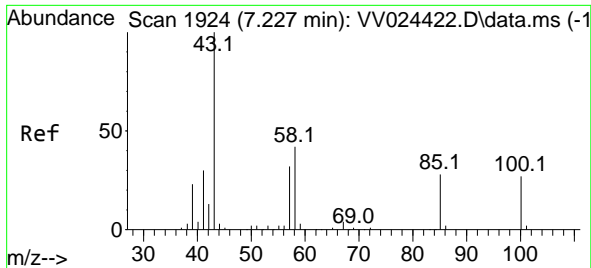
Tgt Ion	Resp	Lower	Upper
83	13820		
85	68.1	44.4	82.5
127	11.5	7.9	11.9



#39  
 cis-1,3-Dichloropropene  
 Concen: 9.943 ug/L  
 RT: 7.030 min Scan# 1863  
 Delta R.T. 0.003 min  
 Lab File: VV024421.D  
 Acq: 21 Jan 2022 12:57

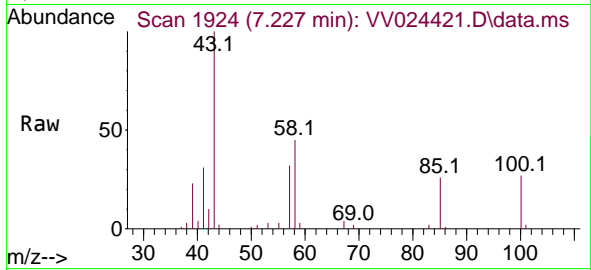
Tgt Ion	Resp	Lower	Upper
75	13779		
77	35.9	22.2	41.2





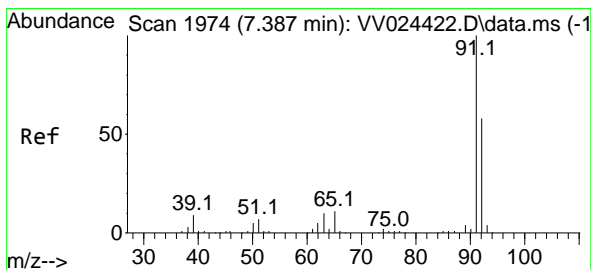
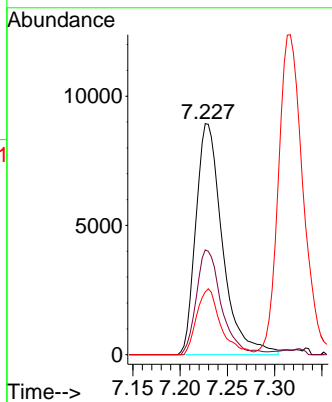
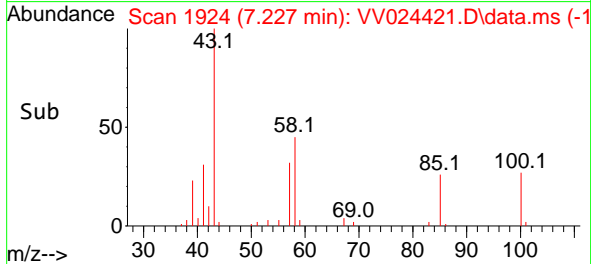
#40  
 4-Methyl-2-pentanone  
 Concen: 20.262 ug/L  
 RT: 7.227 min Scan# 1924  
 Delta R.T. -0.000 min  
 Lab File: VV024421.D  
 Acq: 21 Jan 2022 12:57

Instrument : MSVOA\_V  
 ClientSampleId : VSTD010276

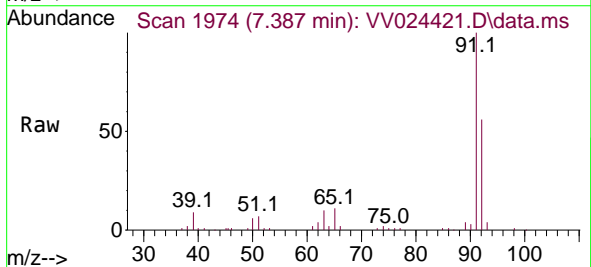


Tgt Ion: 43 Resp: 17511

Ion	Ratio	Lower	Upper
43	100		
58	41.7	33.7	50.5
100	25.7	21.3	31.9

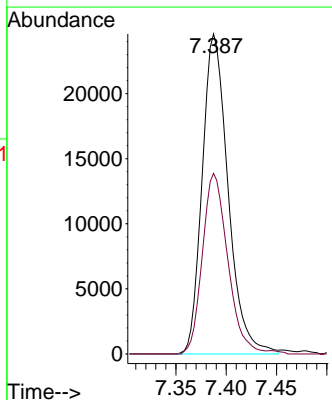
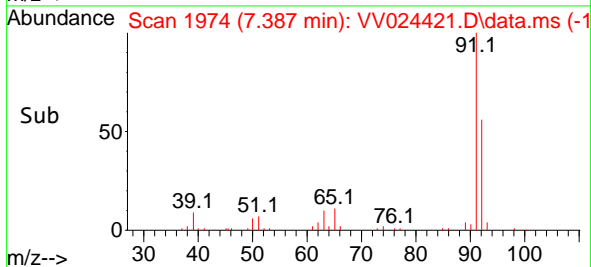


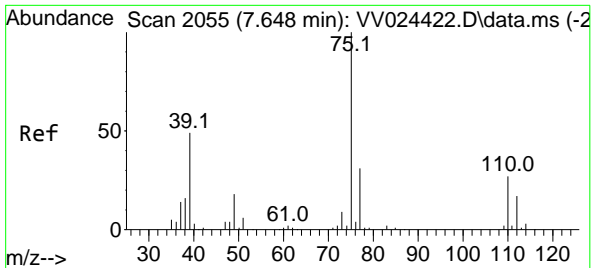
#42  
 Toluene  
 Concen: 10.090 ug/L  
 RT: 7.387 min Scan# 1974  
 Delta R.T. -0.000 min  
 Lab File: VV024421.D  
 Acq: 21 Jan 2022 12:57



Tgt Ion: 91 Resp: 44007

Ion	Ratio	Lower	Upper
91	100		
92	56.5	40.6	75.4

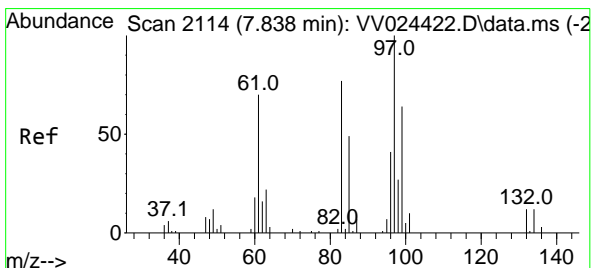
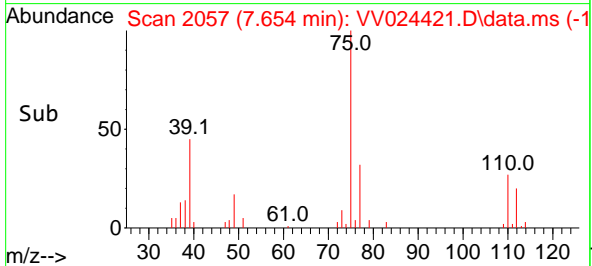
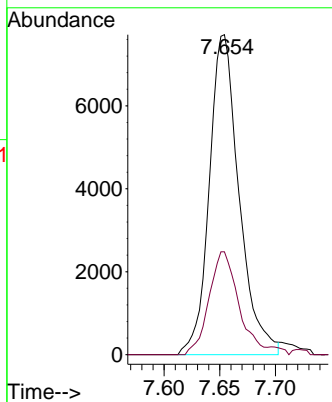
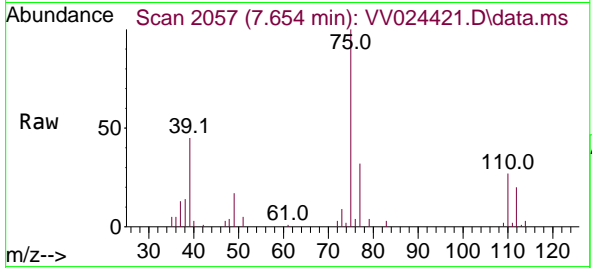




#44  
 trans-1,3-Dichloropropene  
 Concen: 9.249 ug/L  
 RT: 7.654 min Scan# 2057  
 Delta R.T. 0.006 min  
 Lab File: VV024421.D  
 Acq: 21 Jan 2022 12:57

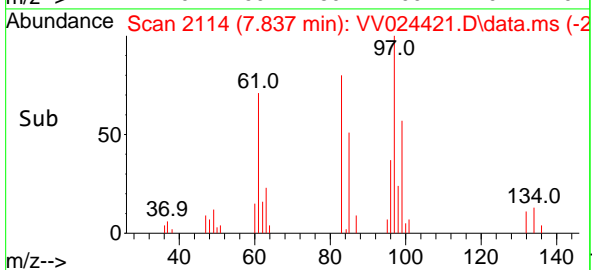
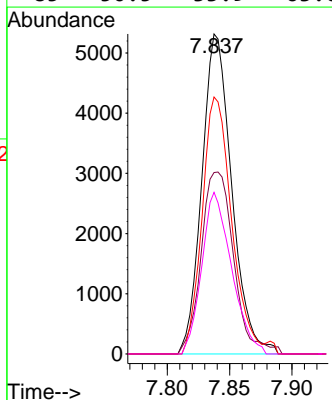
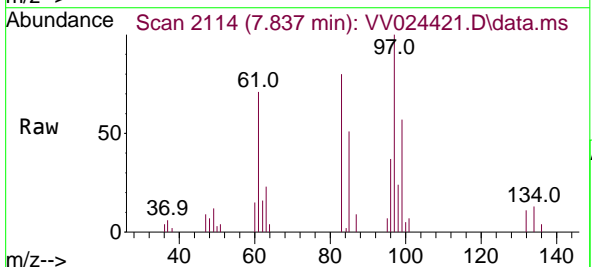
Instrument : MSVOA\_V  
 ClientSampleId : VSTD010276

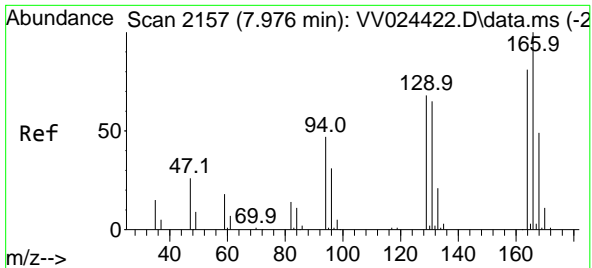
Tgt Ion: 75 Resp: 14383  
 Ion Ratio Lower Upper  
 75 100  
 77 32.1 21.5 39.9



#45  
 1,1,2-Trichloroethane  
 Concen: 10.105 ug/L  
 RT: 7.837 min Scan# 2114  
 Delta R.T. -0.000 min  
 Lab File: VV024421.D  
 Acq: 21 Jan 2022 12:57

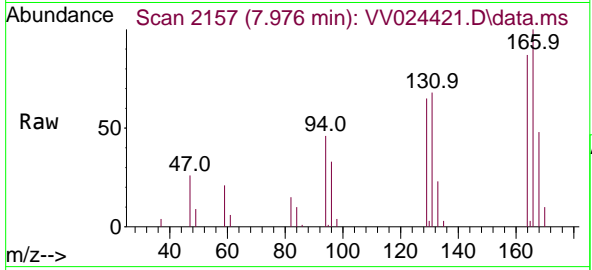
Tgt Ion: 97 Resp: 8880  
 Ion Ratio Lower Upper  
 97 100  
 99 56.7 44.8 83.2  
 83 80.3 53.5 99.5  
 85 50.5 33.9 63.0



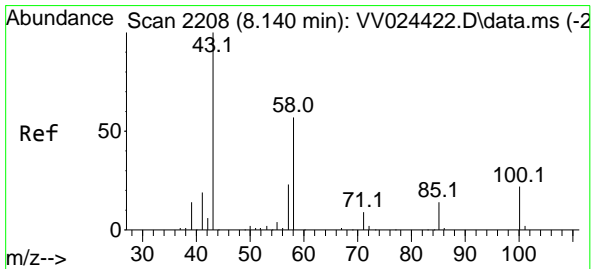
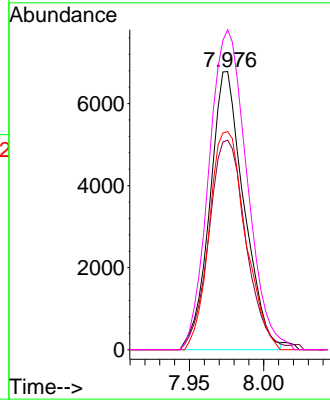
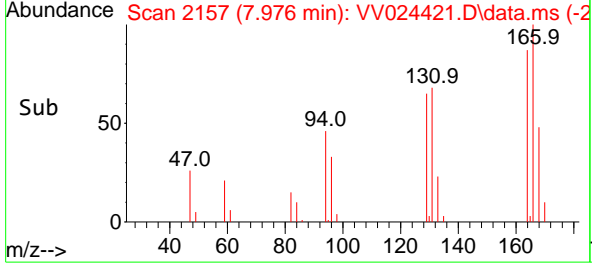


#46  
 Tetrachloroethene  
 Concen: 9.787 ug/L  
 RT: 7.976 min Scan# 2157  
 Delta R.T. -0.000 min  
 Lab File: VV024421.D  
 Acq: 21 Jan 2022 12:57

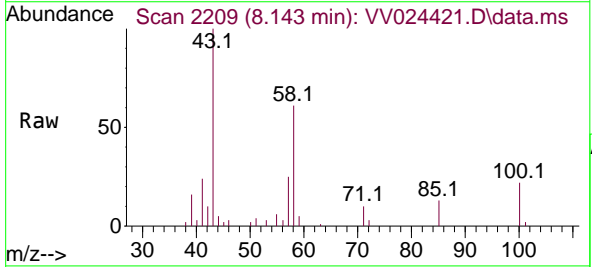
Instrument : MSVOA\_V  
 ClientSampleId : VSTD010276



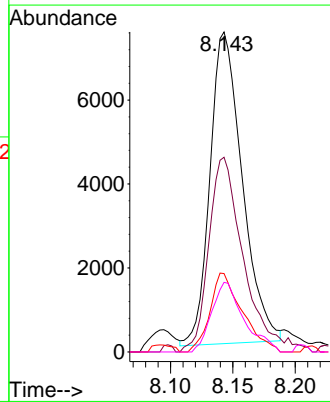
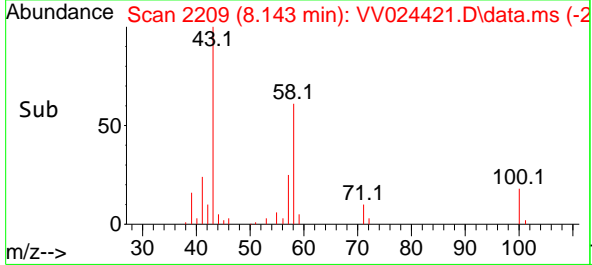
Tgt Ion:164 Resp: 10811  
 Ion Ratio Lower Upper  
 164 100  
 129 75.3 58.4 108.6  
 131 78.4 56.1 104.1  
 166 115.1 86.0 159.6

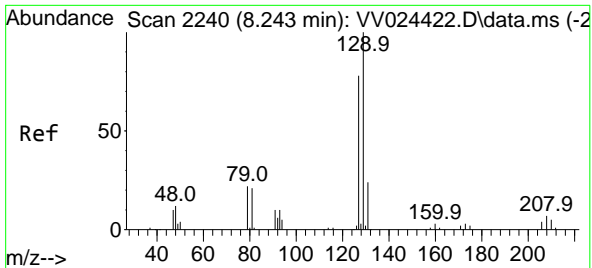


#48  
 2-Hexanone  
 Concen: 19.431 ug/L  
 RT: 8.143 min Scan# 2209  
 Delta R.T. 0.003 min  
 Lab File: VV024421.D  
 Acq: 21 Jan 2022 12:57



Tgt Ion: 43 Resp: 13380  
 Ion Ratio Lower Upper  
 43 100  
 58 65.8 46.2 69.4  
 57 25.2 19.3 28.9  
 100 22.3 16.9 25.3

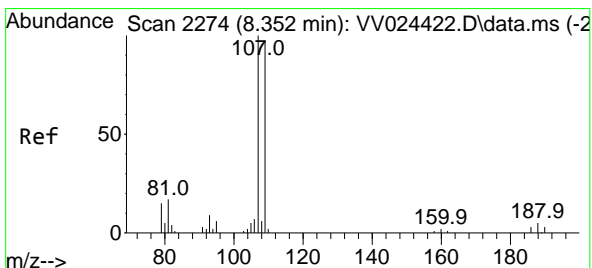
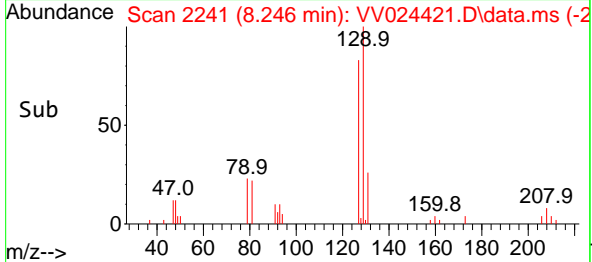
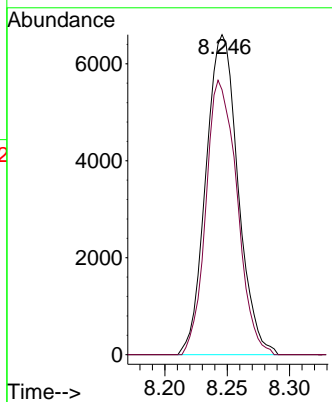
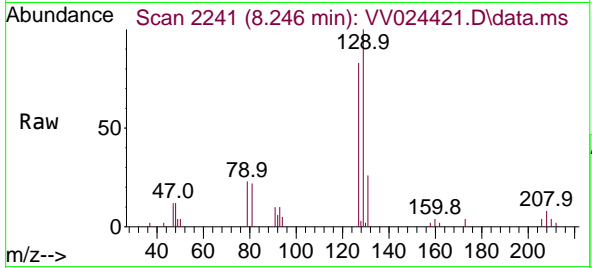




#49  
 Dibromochloromethane  
 Concen: 9.566 ug/L  
 RT: 8.246 min Scan# 21  
 Delta R.T. 0.003 min  
 Lab File: VV024421.D  
 Acq: 21 Jan 2022 12:57

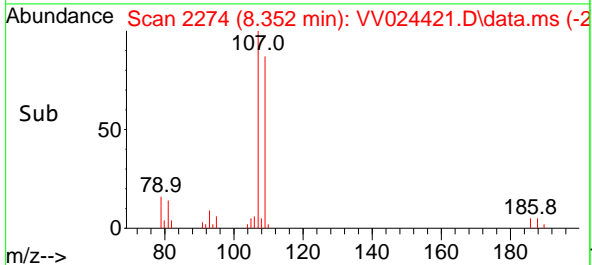
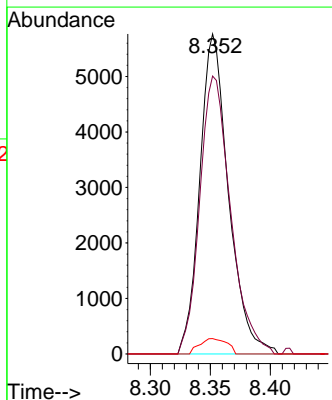
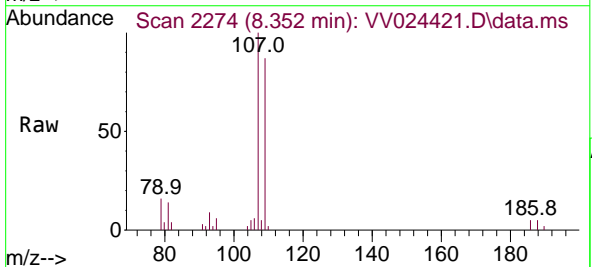
Instrument : MSVOA\_V  
 ClientSampleId : VSTD010276

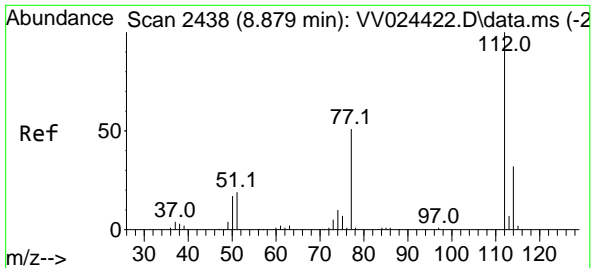
Tgt Ion:129 Resp: 11858  
 Ion Ratio Lower Upper  
 129 100  
 127 82.7 54.9 102.1



#50  
 1,2-Dibromoethane  
 Concen: 10.177 ug/L  
 RT: 8.352 min Scan# 2274  
 Delta R.T. -0.000 min  
 Lab File: VV024421.D  
 Acq: 21 Jan 2022 12:57

Tgt Ion:107 Resp: 9613  
 Ion Ratio Lower Upper  
 107 100  
 109 86.9 67.5 125.4  
 188 4.8 3.9 5.9



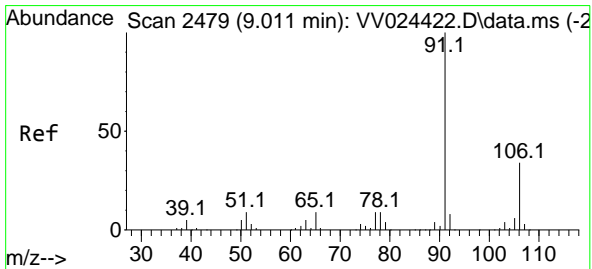
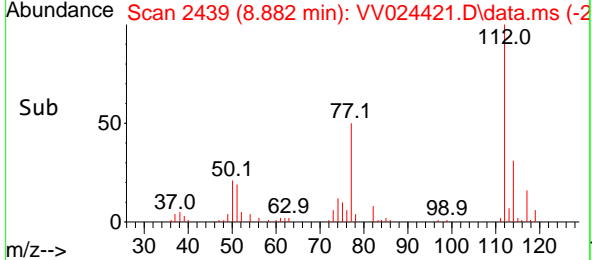
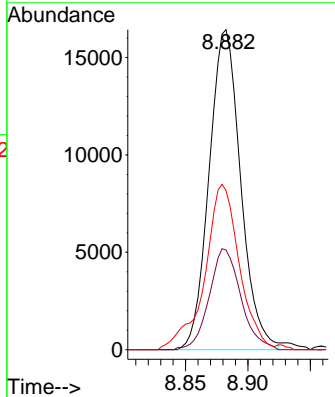
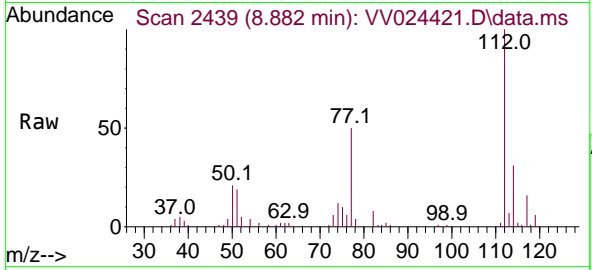


#51  
 Chlorobenzene  
 Concen: 9.660 ug/L  
 RT: 8.882 min Scan# 2438  
 Delta R.T. 0.003 min  
 Lab File: VV024421.D  
 Acq: 21 Jan 2022 12:57

Instrument : MSVOA\_V  
 ClientSampleId : VSTD010276

Tgt Ion: 112 Resp: 28967

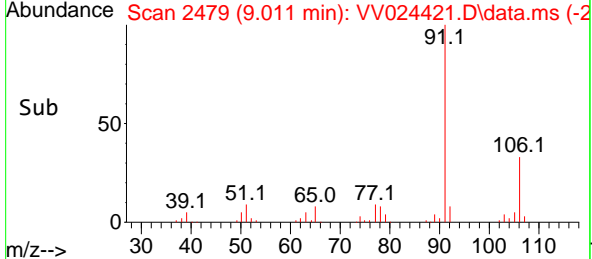
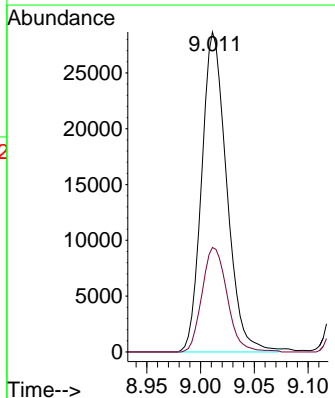
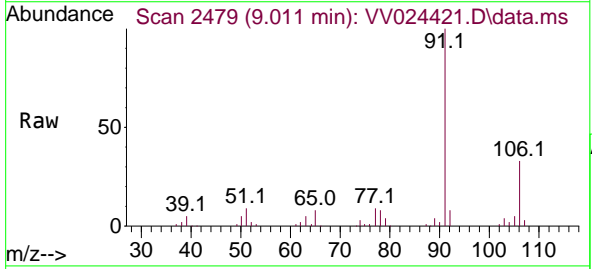
Ion	Ratio	Lower	Upper
112	100		
114	31.1	22.0	41.0
77	49.7	42.0	63.0

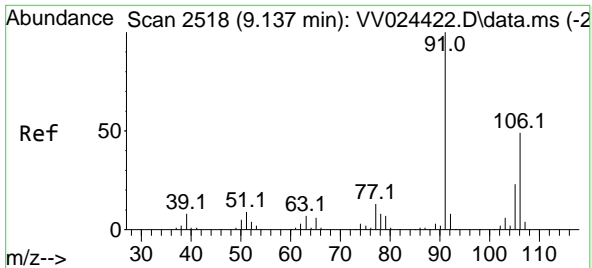


#52  
 Ethylbenzene  
 Concen: 9.798 ug/L  
 RT: 9.011 min Scan# 2479  
 Delta R.T. -0.000 min  
 Lab File: VV024421.D  
 Acq: 21 Jan 2022 12:57

Tgt Ion: 91 Resp: 46362

Ion	Ratio	Lower	Upper
91	100		
106	32.7	23.8	44.2

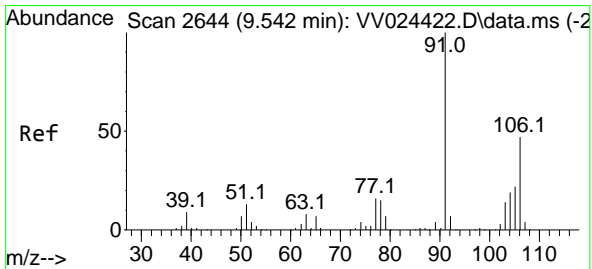
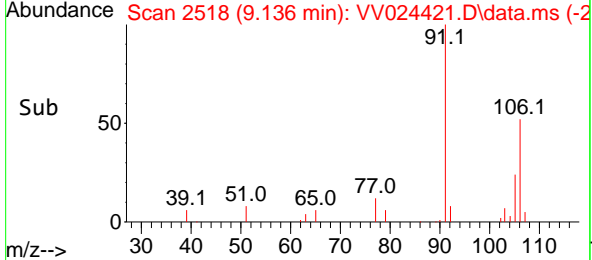
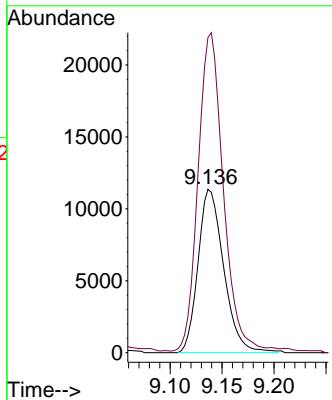
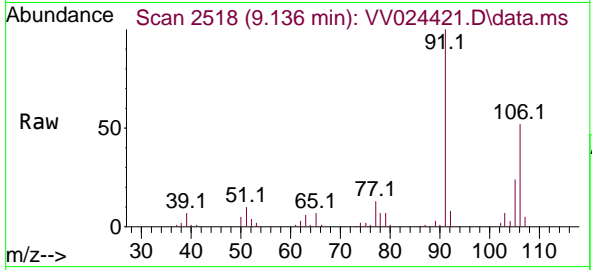




#53  
 m,p-Xylene  
 Concen: 9.820 ug/L  
 RT: 9.136 min Scan# 2518  
 Delta R.T. -0.000 min  
 Lab File: VV024421.D  
 Acq: 21 Jan 2022 12:57

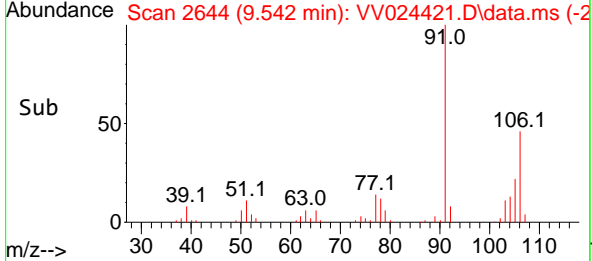
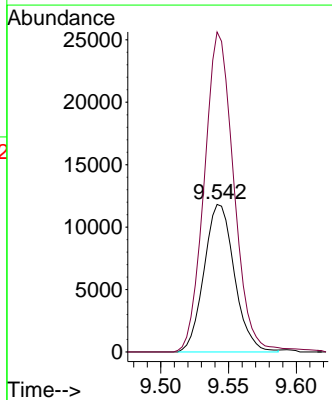
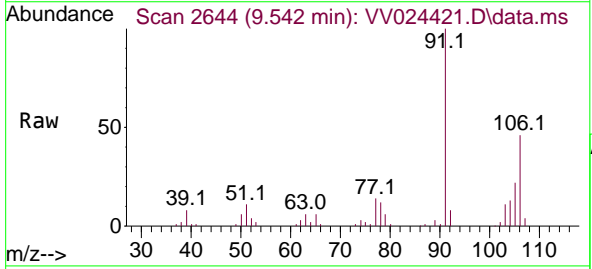
Instrument : MSVOA\_V  
 ClientSampleId : VSTD010276

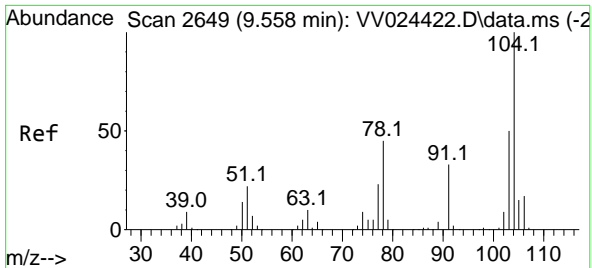
Tgt Ion:106 Resp: 19533  
 Ion Ratio Lower Upper  
 106 100  
 91 192.7 142.0 263.8



#54  
 o-Xylene  
 Concen: 9.601 ug/L  
 RT: 9.542 min Scan# 2644  
 Delta R.T. -0.000 min  
 Lab File: VV024421.D  
 Acq: 21 Jan 2022 12:57

Tgt Ion:106 Resp: 18400  
 Ion Ratio Lower Upper  
 106 100  
 91 216.8 148.1 275.1

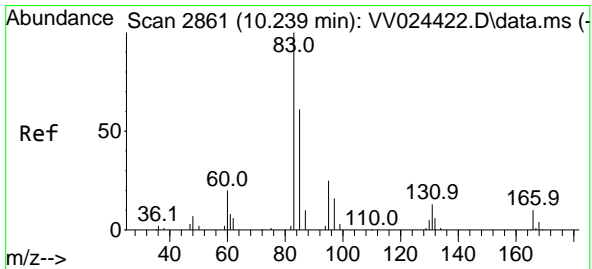
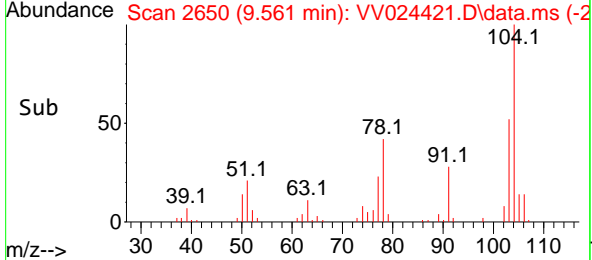
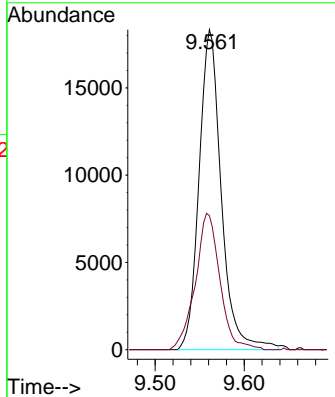
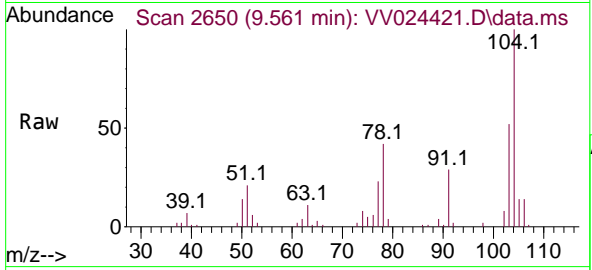




#55  
 Styrene  
 Concen: 9.724 ug/L  
 RT: 9.561 min Scan# 2650  
 Delta R.T. 0.003 min  
 Lab File: VV024421.D  
 Acq: 21 Jan 2022 12:57

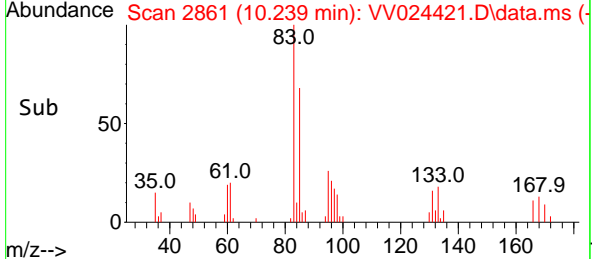
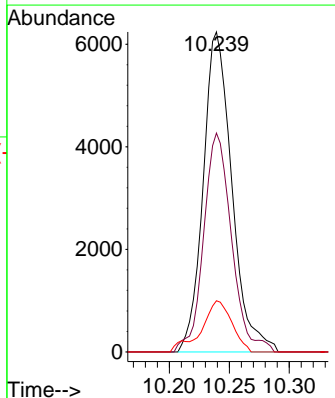
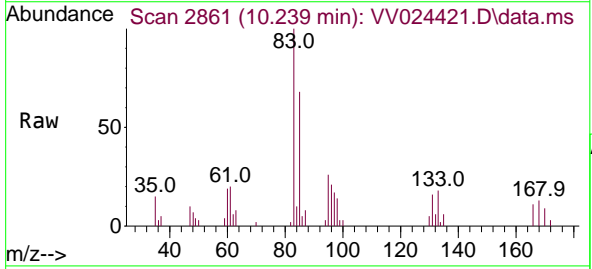
Instrument : MSVOA\_V  
 ClientSampleId : VSTD010276

Tgt Ion: 104 Resp: 31734  
 Ion Ratio Lower Upper  
 104 100  
 78 41.9 31.6 58.8

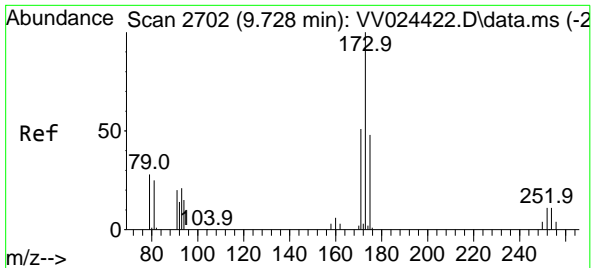


#57  
 1,1,2,2-Tetrachloroethane  
 Concen: 9.530 ug/L  
 RT: 10.239 min Scan# 2861  
 Delta R.T. -0.000 min  
 Lab File: VV024421.D  
 Acq: 21 Jan 2022 12:57

Tgt Ion: 83 Resp: 10381  
 Ion Ratio Lower Upper  
 83 100  
 85 68.4 44.2 82.0  
 131 16.0 11.9 17.9



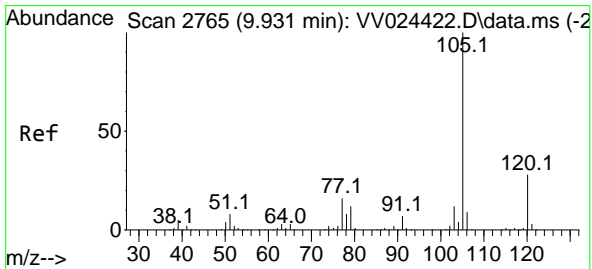
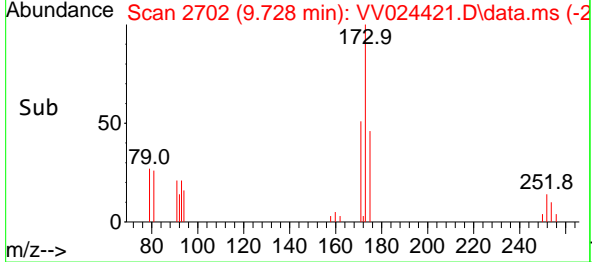
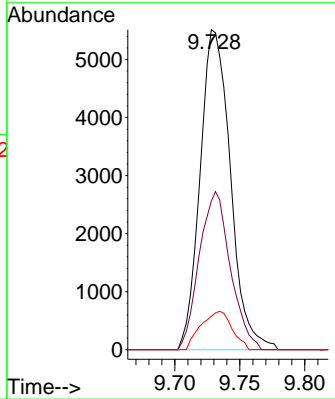
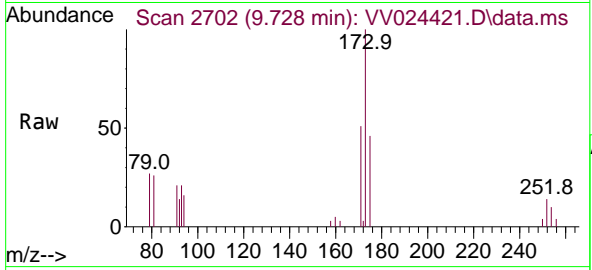




#59  
 Bromoform  
 Concen: 9.937 ug/L  
 RT: 9.728 min Scan# 21  
 Delta R.T. -0.000 min  
 Lab File: VV024421.D  
 Acq: 21 Jan 2022 12:57

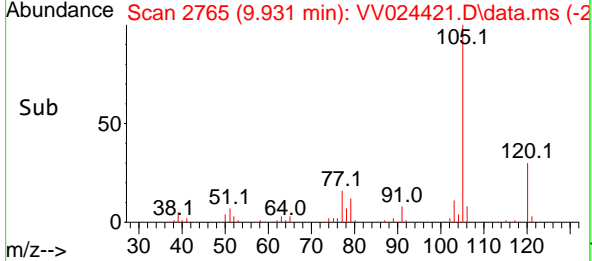
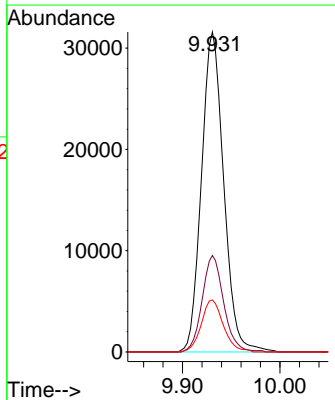
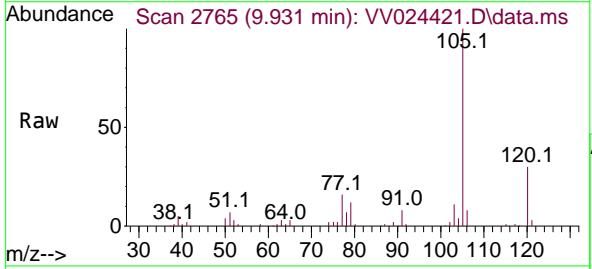
Instrument : MSVOA\_V  
 ClientSampleId : VSTD010276

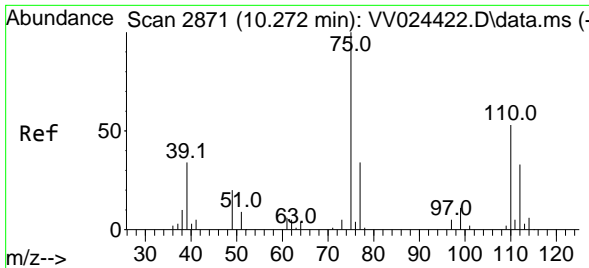
Tgt Ion	Resp	Lower	Upper
173	8967		
173	100		
175	50.5	39.4	59.2
254	12.2	9.0	13.6



#60  
 Isopropylbenzene  
 Concen: 10.366 ug/L  
 RT: 9.931 min Scan# 2765  
 Delta R.T. -0.000 min  
 Lab File: VV024421.D  
 Acq: 21 Jan 2022 12:57

Tgt Ion	Resp	Lower	Upper
105	49999		
105	100		
120	29.0	22.1	33.1
77	16.1	12.5	18.7

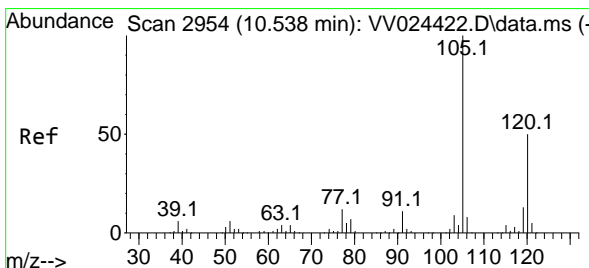
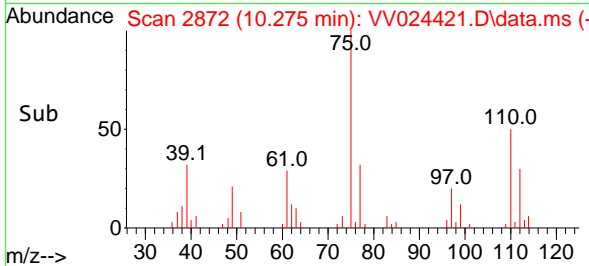
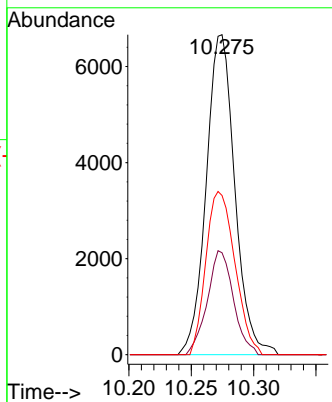
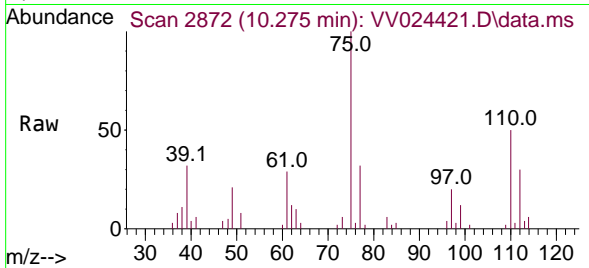




#61  
 1,2,3-Trichloropropane  
 Concen: 10.806 ug/L  
 RT: 10.275 min Scan# 2872  
 Delta R.T. 0.003 min  
 Lab File: VV024421.D  
 Acq: 21 Jan 2022 12:57

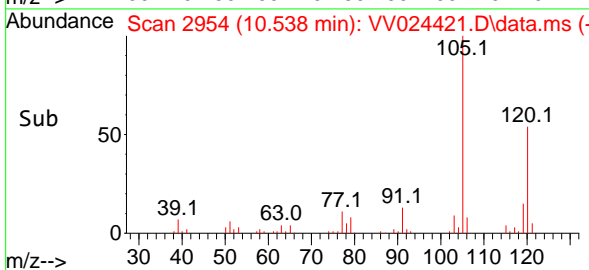
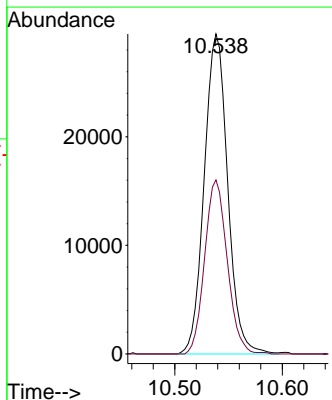
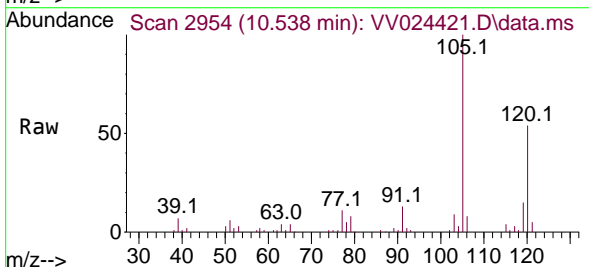
Instrument : MSVOA\_V  
 ClientSampleId : VSTD010276

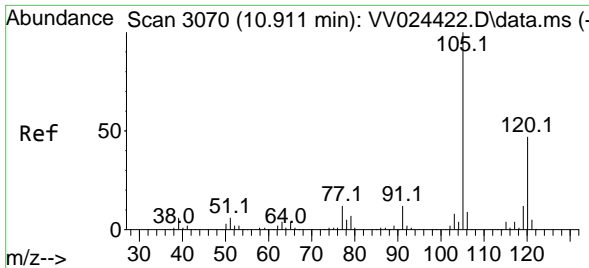
Tgt Ion	Resp	Lower	Upper
75	10661		
75	100		
77	29.6	26.6	39.8
110	51.7	43.0	64.6



#62  
 1,3,5-Trimethylbenzene  
 Concen: 9.904 ug/L  
 RT: 10.538 min Scan# 2954  
 Delta R.T. -0.000 min  
 Lab File: VV024421.D  
 Acq: 21 Jan 2022 12:57

Tgt Ion	Resp	Lower	Upper
105	44625		
105	100		
120	52.2	40.5	60.7

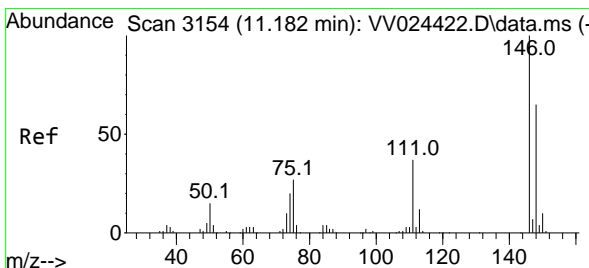
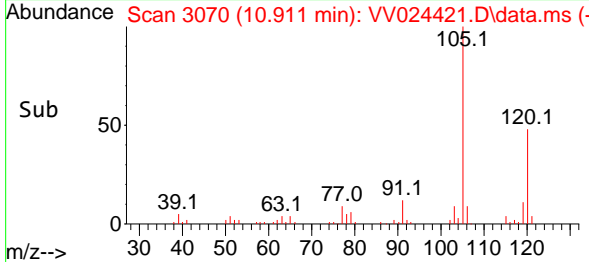
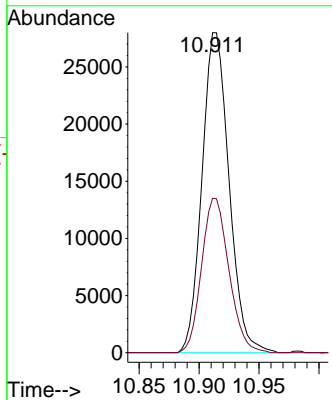
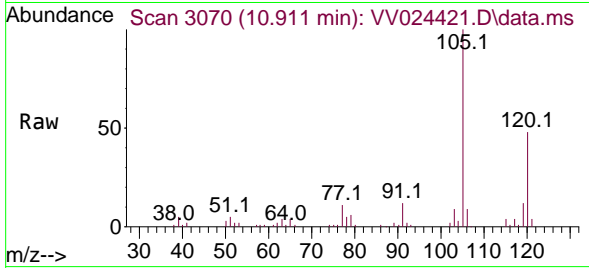




#63  
 1,2,4-Trimethylbenzene  
 Concen: 9.792 ug/L  
 RT: 10.911 min Scan# 3070  
 Delta R.T. -0.000 min  
 Lab File: VV024421.D  
 Acq: 21 Jan 2022 12:57

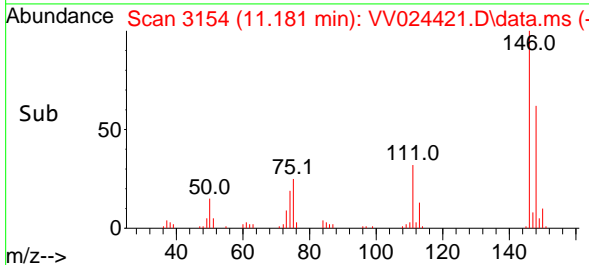
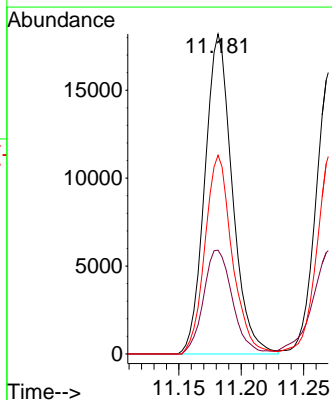
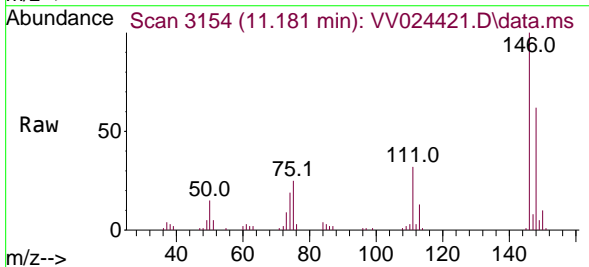
Instrument : MSVOA\_V  
 ClientSampleId : VSTD010276

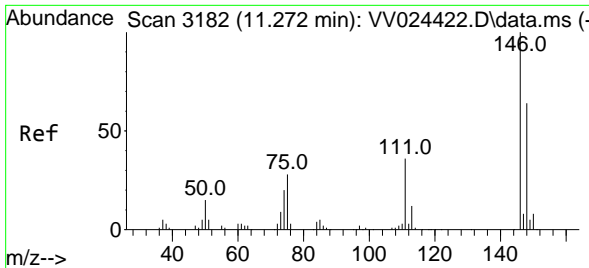
Tgt Ion:105 Resp: 43961  
 Ion Ratio Lower Upper  
 105 100  
 120 48.8 37.3 55.9



#64  
 1,3-Dichlorobenzene  
 Concen: 10.281 ug/L  
 RT: 11.181 min Scan# 3154  
 Delta R.T. -0.000 min  
 Lab File: VV024421.D  
 Acq: 21 Jan 2022 12:57

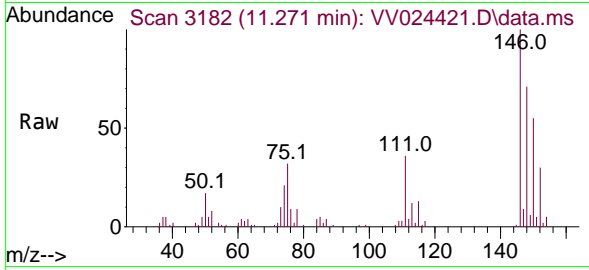
Tgt Ion:146 Resp: 27909  
 Ion Ratio Lower Upper  
 146 100  
 111 32.4 25.7 47.7  
 148 62.1 45.4 84.2



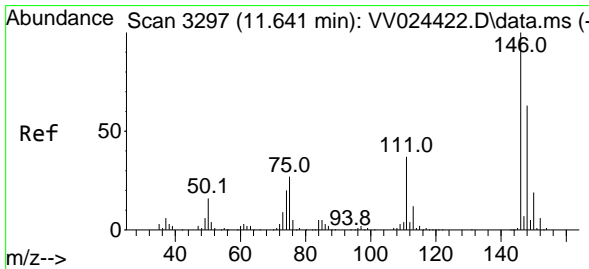
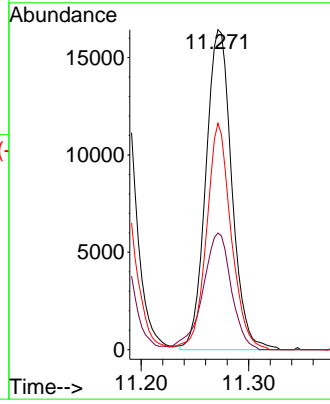
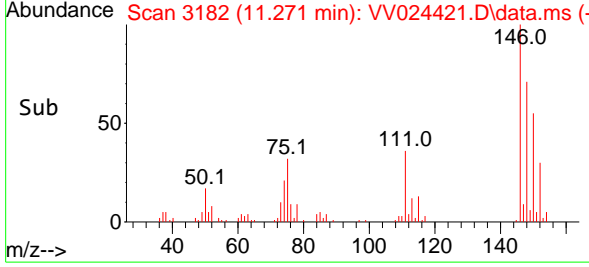


#65  
 1,4-Dichlorobenzene  
 Concen: 10.134 ug/L  
 RT: 11.271 min Scan# 3182  
 Delta R.T. -0.000 min  
 Lab File: VV024421.D  
 Acq: 21 Jan 2022 12:57

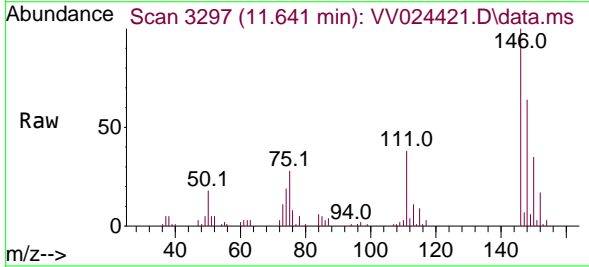
Instrument : MSVOA\_V  
 ClientSampleId : VSTD010276



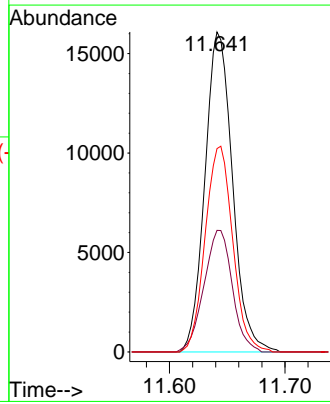
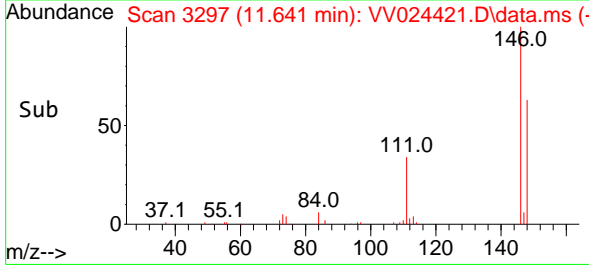
Tgt Ion:146 Resp: 27569  
 Ion Ratio Lower Upper  
 146 100  
 111 36.5 25.2 46.8  
 148 70.7 45.1 83.9

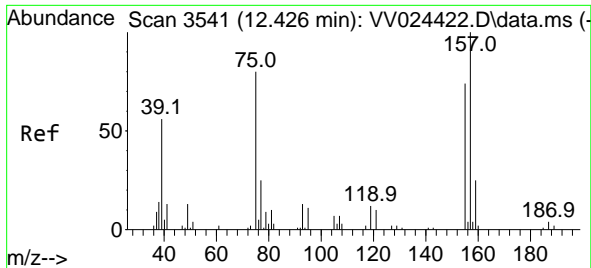


#67  
 1,2-Dichlorobenzene  
 Concen: 10.137 ug/L  
 RT: 11.641 min Scan# 3297  
 Delta R.T. -0.000 min  
 Lab File: VV024421.D  
 Acq: 21 Jan 2022 12:57



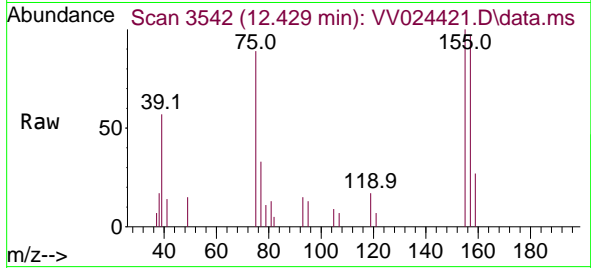
Tgt Ion:146 Resp: 26675  
 Ion Ratio Lower Upper  
 146 100  
 111 38.0 30.2 45.2  
 148 63.5 50.6 76.0



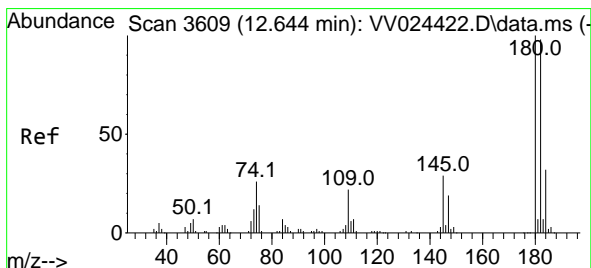
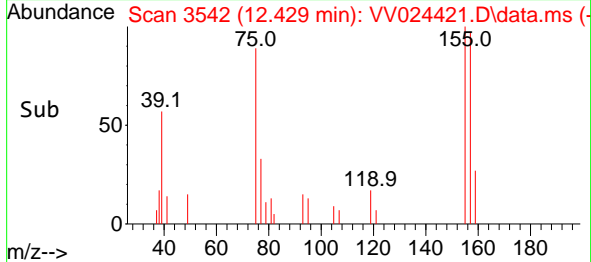
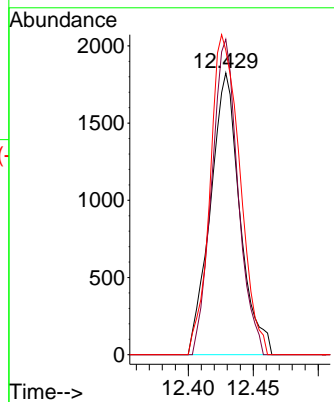


#68  
 1,2-Dibromo-3-chloropropane  
 Concen: 8.914 ug/L  
 RT: 12.429 min Scan# 3542  
 Delta R.T. 0.003 min  
 Lab File: VV024421.D  
 Acq: 21 Jan 2022 12:57

Instrument : MSVOA\_V  
 ClientSampleId : VSTD010276

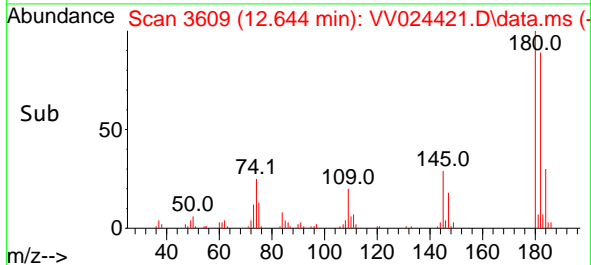
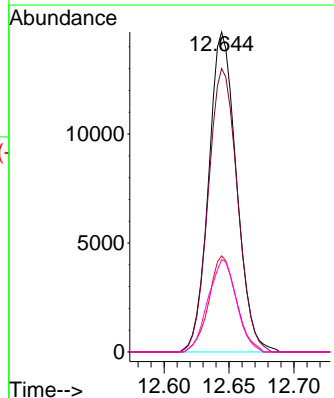
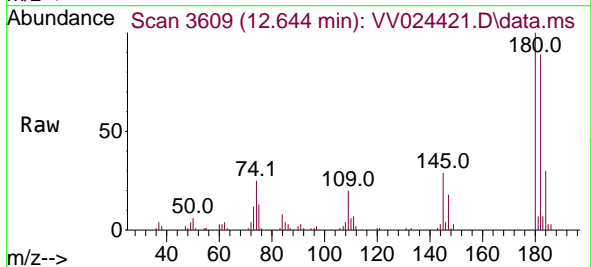


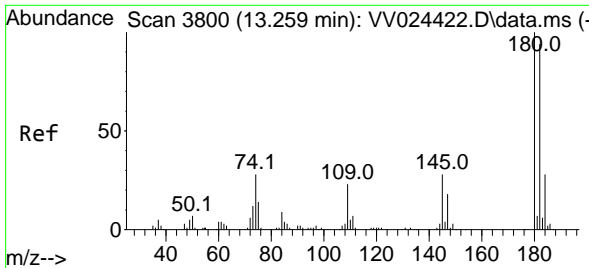
Tgt Ion: 75 Resp: 2873  
 Ion Ratio Lower Upper  
 75 100  
 155 111.9 73.6 110.4#  
 157 108.1 99.8 149.8



#69  
 1,3,5-Trichlorobenzene  
 Concen: 10.018 ug/L  
 RT: 12.644 min Scan# 3609  
 Delta R.T. -0.000 min  
 Lab File: VV024421.D  
 Acq: 21 Jan 2022 12:57

Tgt Ion:180 Resp: 21875  
 Ion Ratio Lower Upper  
 180 100  
 182 92.6 78.0 117.0  
 184 29.6 25.1 37.7  
 145 29.3 23.1 34.7



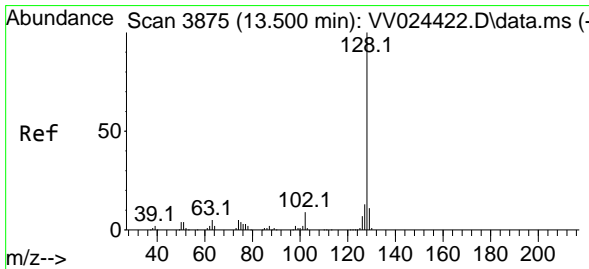
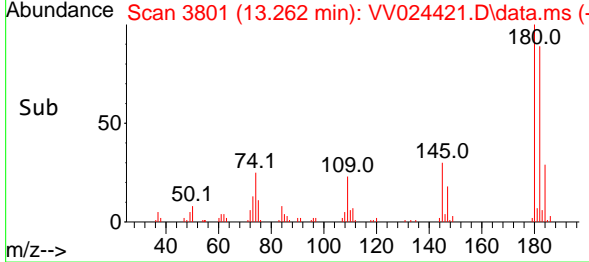
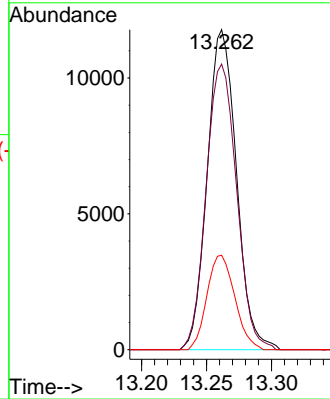
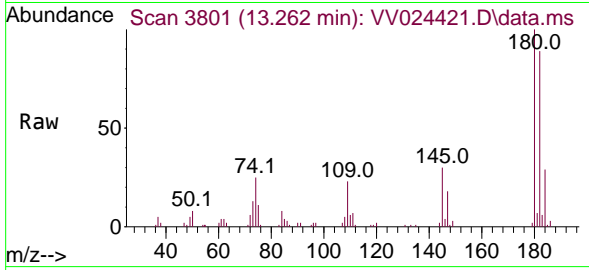


#70  
 1,2,4-trichlorobenzene  
 Concen: 9.506 ug/L  
 RT: 13.262 min Scan# 3801  
 Delta R.T. 0.003 min  
 Lab File: VV024421.D  
 Acq: 21 Jan 2022 12:57

Instrument :  
 MSVOA\_V  
 ClientSampleId :  
 VSTD010276

Tgt Ion:180 Resp: 18424

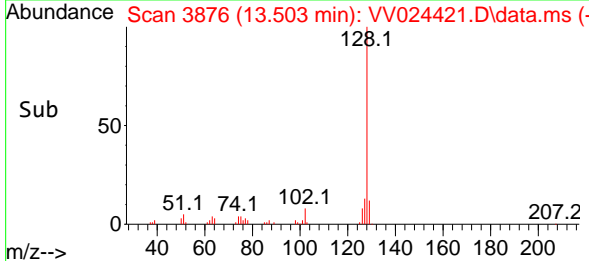
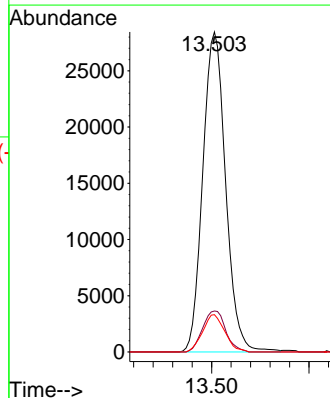
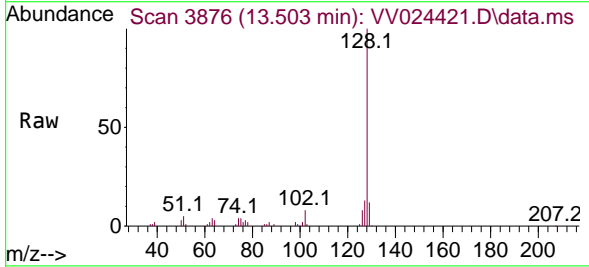
Ion	Ratio	Lower	Upper
180	100		
182	93.0	75.8	113.8
145	28.1	22.8	34.2

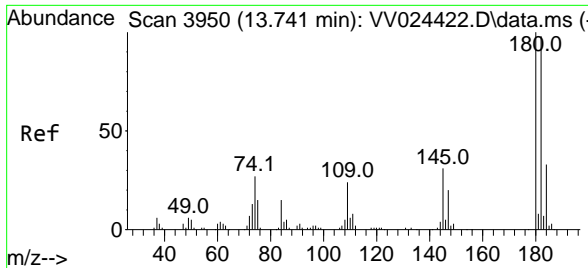


#71  
 Naphthalene  
 Concen: 9.316 ug/L  
 RT: 13.503 min Scan# 3876  
 Delta R.T. 0.003 min  
 Lab File: VV024421.D  
 Acq: 21 Jan 2022 12:57

Tgt Ion:128 Resp: 46373

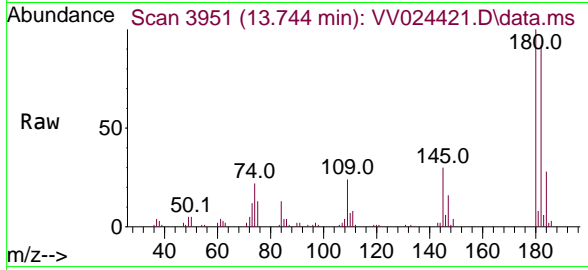
Ion	Ratio	Lower	Upper
128	100		
127	12.9	10.5	15.7
129	11.3	8.9	13.3





#72  
 1,2,3-Trichlorobenzene  
 Concen: 9.653 ug/L  
 RT: 13.744 min Scan# 3951  
 Delta R.T. 0.003 min  
 Lab File: VV024421.D  
 Acq: 21 Jan 2022 12:57

Instrument :  
 MSVOA\_V  
 ClientSampleId :  
 VSTD010276



Tgt Ion:180 Resp: 17827

Ion	Ratio	Lower	Upper
180	100		
182	96.7	78.1	117.1
145	30.6	25.0	37.6

