

Data Path : Z:\voasrv\HPCHEM1\MSVOA_V\Data\VW020824\
 Data File : VW034075.D
 Acq On : 08 Feb 2024 22:08
 Operator : SY/MD
 Sample : P1401-01
 Misc : 25.0mL/MSVOA_V/WATER
 ALS Vial : 34 Sample Multiplier: 1

Instrument :
 MSVOA_V
 ClientSampleId :
 COAH4

Quant Time: Feb 09 04:46:31 2024
 Quant Method : Z:\voasrv\HPCHEM1\MSVOA_V\Method\SFAMVTR012524WMA.M
 Quant Title : TRACE VOA SFAM1.0
 QLast Update : Fri Feb 09 03:48:51 2024
 Response via : Initial Calibration

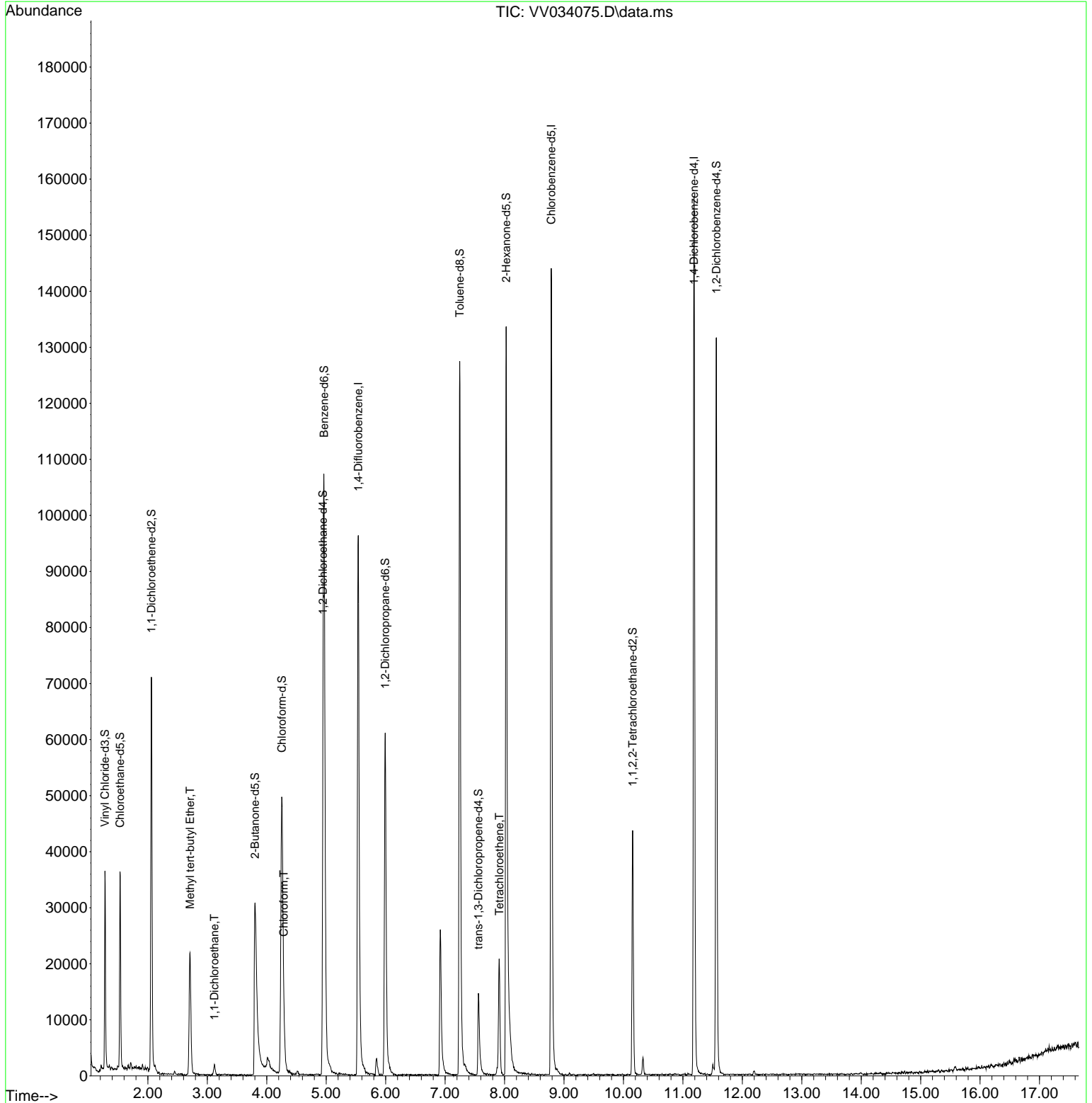
Compound	R.T.	QIon	Response	Conc	Units	Dev(Min)
Internal Standards						
1) 1,4-Difluorobenzene	5.539	114	83603	5.000	ug/L	0.00
28) Chlorobenzene-d5	8.786	117	78766	5.000	ug/L	0.00
58) 1,4-Dichlorobenzene-d4	11.188	152	41164	5.000	ug/L	0.00
System Monitoring Compounds						
4) Vinyl Chloride-d3	1.278	65	22847	3.529	ug/L	0.00
Spiked Amount	5.000	Range 40 - 130	Recovery	=	70.600%	
7) Chloroethane-d5	1.532	69	21865	3.855	ug/L	0.00
Spiked Amount	5.000	Range 65 - 130	Recovery	=	77.200%	
11) 1,1-Dichloroethene-d2	2.060	65	11808	3.782	ug/L	0.00
Spiked Amount	5.000	Range 60 - 125	Recovery	=	75.600%	
20) 2-Butanone-d5	3.802	46	57649	53.014	ug/L	0.00
Spiked Amount	50.000	Range 40 - 130	Recovery	=	106.020%	
24) Chloroform-d	4.252	84	52608	4.471	ug/L	0.00
Spiked Amount	5.000	Range 70 - 125	Recovery	=	89.400%	
26) 1,2-Dichloroethane-d4	4.947	65	26409	4.803	ug/L	0.00
Spiked Amount	5.000	Range 70 - 130	Recovery	=	96.000%	
32) Benzene-d6	4.963	84	95408	4.037	ug/L	0.00
Spiked Amount	5.000	Range 70 - 125	Recovery	=	80.800%	
36) 1,2-Dichloropropane-d6	5.992	67	28791	4.358	ug/L	0.00
Spiked Amount	5.000	Range 60 - 140	Recovery	=	87.200%	
41) Toluene-d8	7.246	98	86716	3.993	ug/L	0.00
Spiked Amount	5.000	Range 70 - 130	Recovery	=	79.800%	
43) trans-1,3-Dichloroprop...	7.561	79	10292	4.126	ug/L	0.00
Spiked Amount	5.000	Range 55 - 130	Recovery	=	82.600%	
46) 2-Hexanone-d5	8.027	63	48182	54.111	ug/L	0.00
Spiked Amount	50.000	Range 45 - 130	Recovery	=	108.220%	
56) 1,1,2,2-Tetrachloroeth...	10.156	84	20384	5.090	ug/L	0.00
Spiked Amount	5.000	Range 65 - 120	Recovery	=	101.800%	
66) 1,2-Dichlorobenzene-d4	11.564	152	33069	4.417	ug/L	0.00
Spiked Amount	5.000	Range 80 - 120	Recovery	=	88.400%	
Target Compounds						
17) Methyl tert-butyl Ether	2.709	73	22629	1.886	ug/L	97
19) 1,1-Dichloroethane	3.121	63	2272	0.208	ug/L #	91
25) Chloroform	4.285	83	6438	0.583	ug/L	89
47) Tetrachloroethene	7.911	164	4932	0.888	ug/L	96

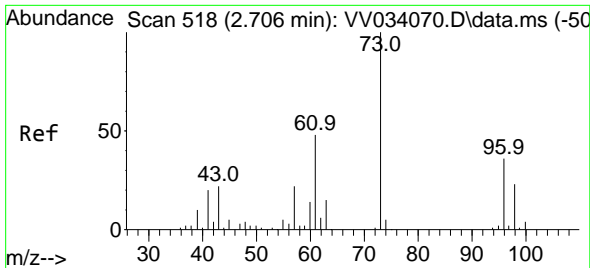
(#) = qualifier out of range (m) = manual integration (+) = signals summed

Data Path : Z:\voasrv\HPCHEM1\MSVOA_V\Data\VV020824\
 Data File : VV034075.D
 Acq On : 08 Feb 2024 22:08
 Operator : SY/MD
 Sample : P1401-01
 Misc : 25.0mL/MSVOA_V/WATER
 ALS Vial : 34 Sample Multiplier: 1

Instrument :
 MSVOA_V
 ClientSampleId :
 COAH4

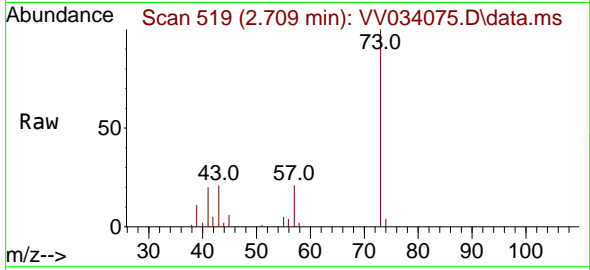
Quant Time: Feb 09 04:46:31 2024
 Quant Method : Z:\voasrv\HPCHEM1\MSVOA_V\Method\SFAMVTR012524WMA.M
 Quant Title : TRACE VOA SFAM1.0
 QLast Update : Fri Feb 09 03:48:51 2024
 Response via : Initial Calibration





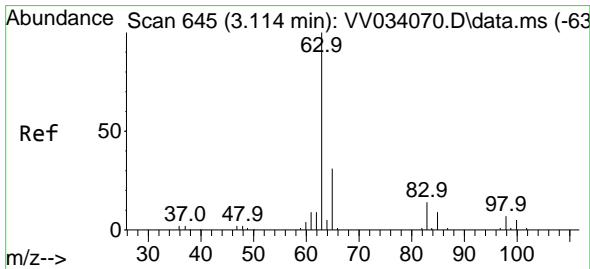
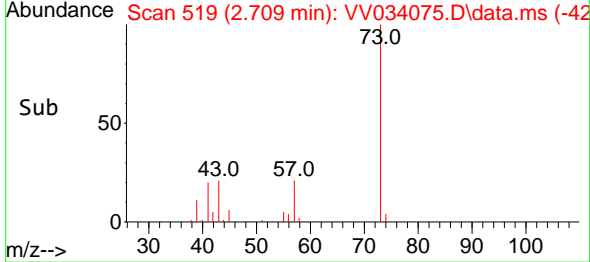
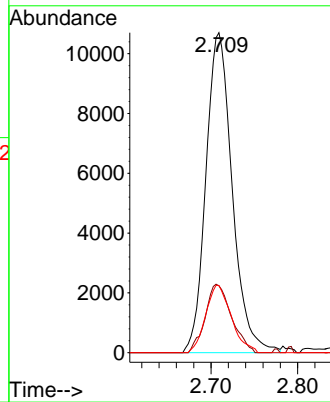
#17
 Methyl tert-butyl Ether
 Concen: 1.886 ug/L
 RT: 2.709 min Scan# 519
 Delta R.T. 0.003 min
 Lab File: VV034075.D
 Acq: 08 Feb 2024 22:08

Instrument :
 MSVOA_V
 ClientSampleId :
 COAH4



Tgt Ion: 73 Resp: 22629

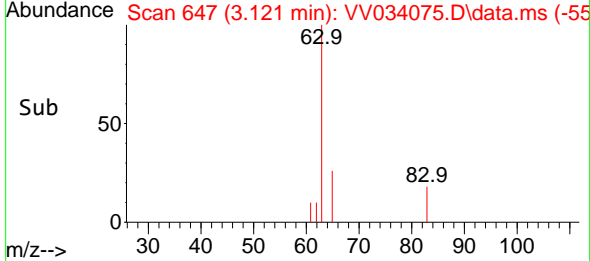
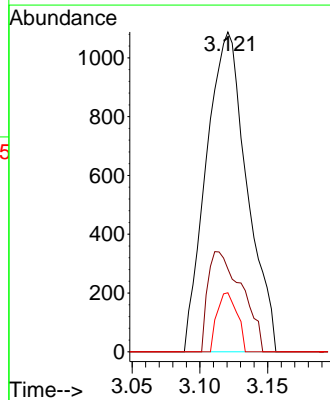
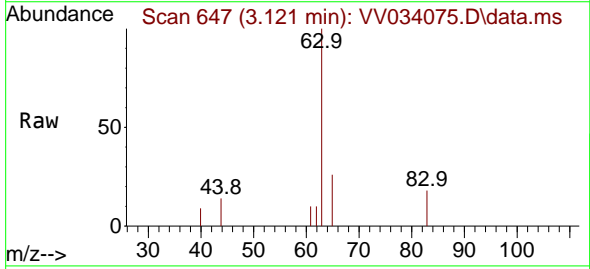
Ion	Ratio	Lower	Upper
73	100		
43	21.3	17.7	26.5
57	20.5	17.9	26.9

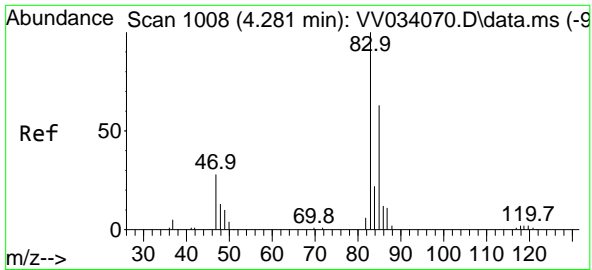


#19
 1,1-Dichloroethane
 Concen: 0.208 ug/L
 RT: 3.121 min Scan# 647
 Delta R.T. 0.006 min
 Lab File: VV034075.D
 Acq: 08 Feb 2024 22:08

Tgt Ion: 63 Resp: 2272

Ion	Ratio	Lower	Upper
63	100		
65	25.9	20.8	38.6
83	18.5	9.4	17.4

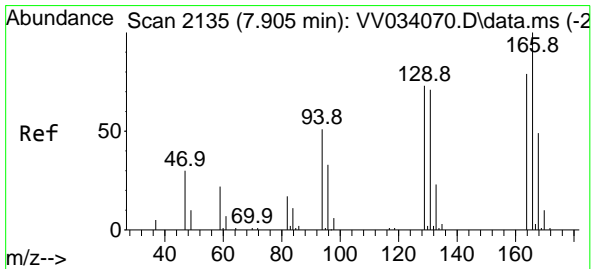
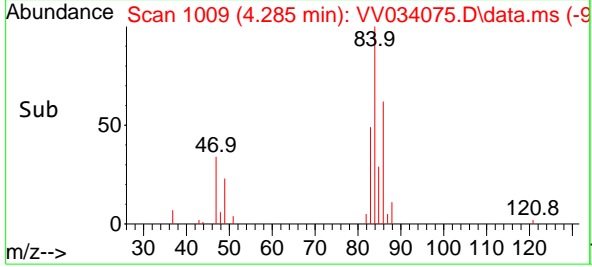
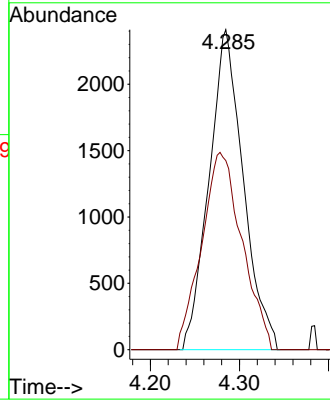
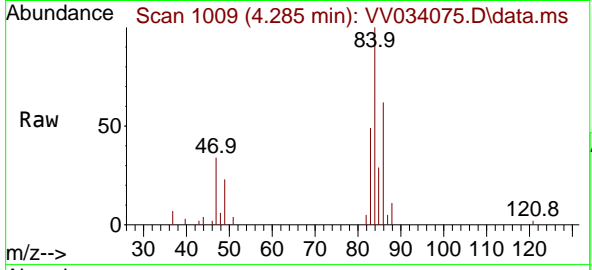




#25
 Chloroform
 Concen: 0.583 ug/L
 RT: 4.285 min Scan# 1009
 Delta R.T. 0.003 min
 Lab File: VV034075.D
 Acq: 08 Feb 2024 22:08

Instrument : MSVOA_V
 ClientSampleId : C0AH4

Tgt Ion: 83 Resp: 6438
 Ion Ratio Lower Upper
 83 100
 85 59.1 47.5 88.1



#47
 Tetrachloroethene
 Concen: 0.888 ug/L
 RT: 7.911 min Scan# 2137
 Delta R.T. 0.006 min
 Lab File: VV034075.D
 Acq: 08 Feb 2024 22:08

Tgt Ion:164 Resp: 4932
 Ion Ratio Lower Upper
 164 100
 129 90.9 67.8 125.8
 131 92.4 63.0 117.0
 166 128.8 92.6 172.0

