

Data Path : Z:\voasrv\HPCHEM1\MSVOA_V\Data\VV021624\
 Data File : VV034220.D
 Acq On : 16 Feb 2024 16:24
 Operator : SY/MD
 Sample : P1501-05
 Misc : 25.0mL/MSVOA_V/WATER
 ALS Vial : 17 Sample Multiplier: 1

Instrument :
 MSVOA_V
 ClientSampleId :
 E10A1

Integration Parameters: rteint.p
 Integrator: RTE
 Smoothing : ON Filtering: 5
 Sampling : 1 Min Area: 3 % of largest Peak
 Start Thrs: 0.1 Max Peaks: 100
 Stop Thrs : 0 Peak Location: TOP

If leading or trailing edge < 100 prefer < Baseline drop else tangent >
 Peak separation: 5

Method : Z:\voasrv\HPCHEM1\MSVOA_V\Method\SFAMVTR012524WMA.M
 Title : TRACE VOA SFAM1.0

Signal : TIC: VV034220.D\data.ms

peak #	R.T. min	first scan	max scan	last scan	PK TY	peak height	corr. area	corr. % max.	% of total
1	1.089	10	15	27	rVB2	6737	7639	3.35%	0.406%
2	1.278	66	74	94	rVB	36965	42002	18.40%	2.230%
3	1.388	101	108	118	rBV	6761	7439	3.26%	0.395%
4	1.536	146	154	169	rBV	31476	37470	16.41%	1.990%
5	1.767	219	226	234	rBV4	1620	2722	1.19%	0.145%
6	2.060	307	317	339	rVB	68163	101750	44.56%	5.403%
7	2.246	366	375	392	rBV	1817	3386	1.48%	0.180%
8	3.815	856	863	888	rBV	16384	53654	23.50%	2.849%
9	4.253	984	999	1021	rBV2	39141	101205	44.33%	5.374%
10	4.960	1204	1219	1251	rBV4	90617	228322	100.00%	12.124%
11	5.535	1388	1398	1425	rBV	77984	161865	70.89%	8.595%
12	5.989	1529	1539	1571	rBV2	48672	101666	44.53%	5.399%
13	6.918	1819	1828	1846	rBV2	23313	45311	19.85%	2.406%
14	7.243	1919	1929	1950	rBV	109389	197952	86.70%	10.512%
15	7.561	2020	2028	2042	rBV2	12469	23160	10.14%	1.230%
16	8.031	2165	2174	2208	rBV	76816	168987	74.01%	8.974%
17	8.786	2399	2409	2437	rBV	116630	197465	86.49%	10.486%
18	10.153	2825	2834	2847	rBV2	30471	48579	21.28%	2.580%
19	11.185	3146	3155	3172	rBV	120303	189195	82.86%	10.047%
20	11.561	3259	3272	3291	rBV	102656	163378	71.56%	8.676%

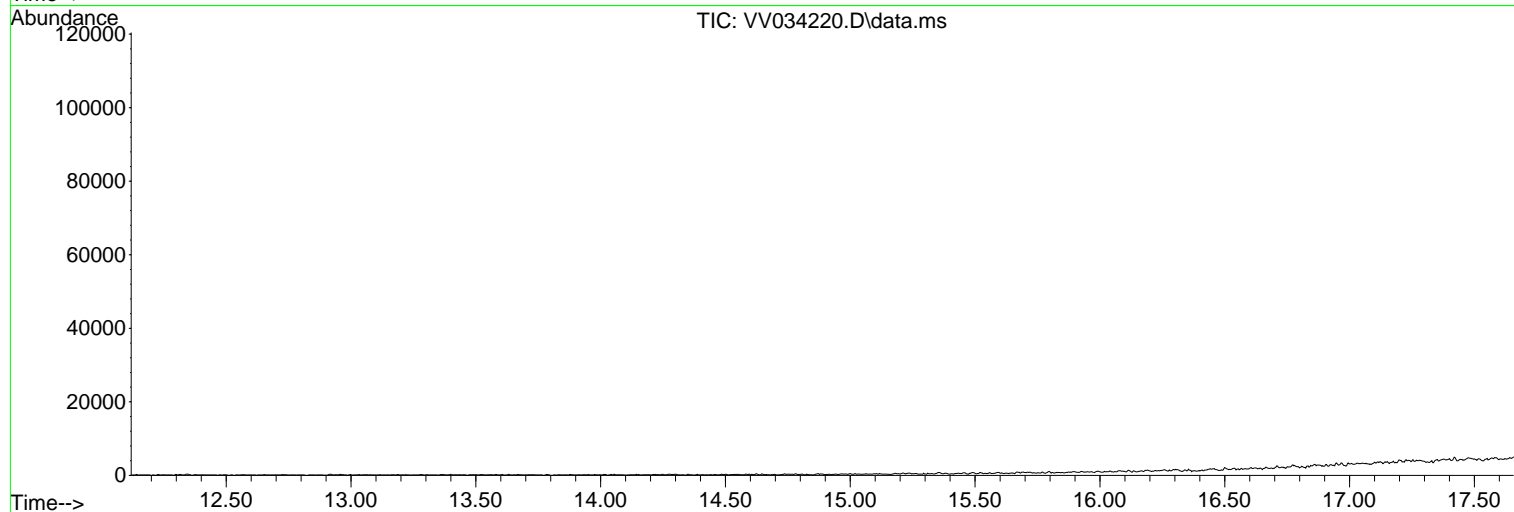
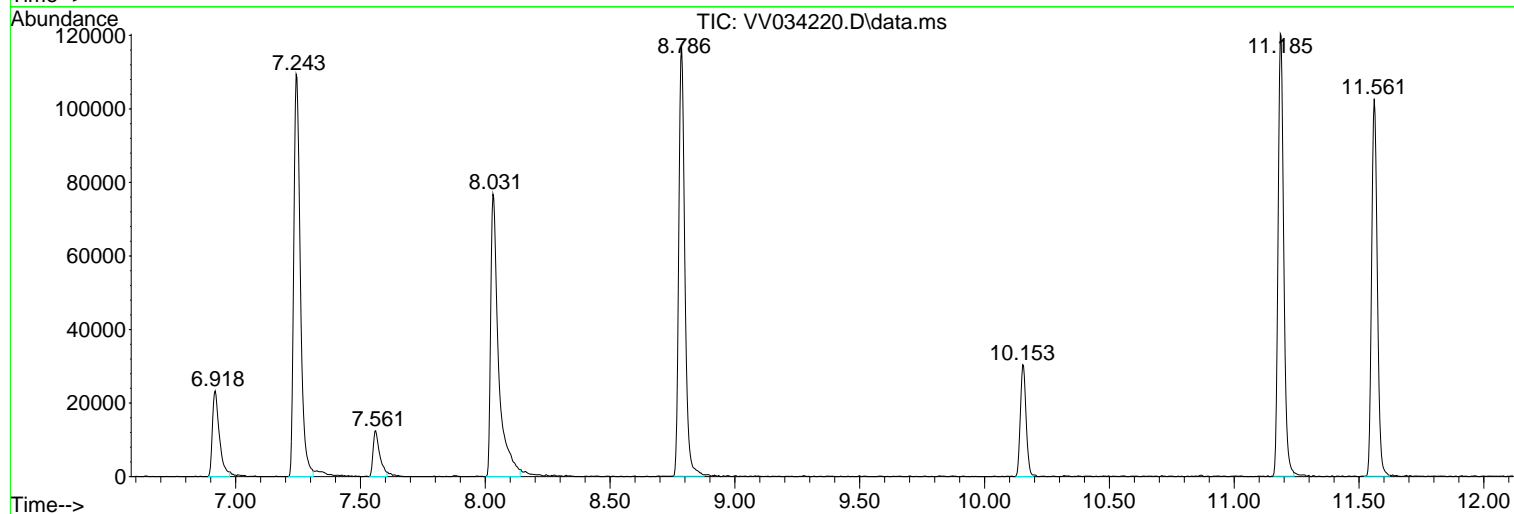
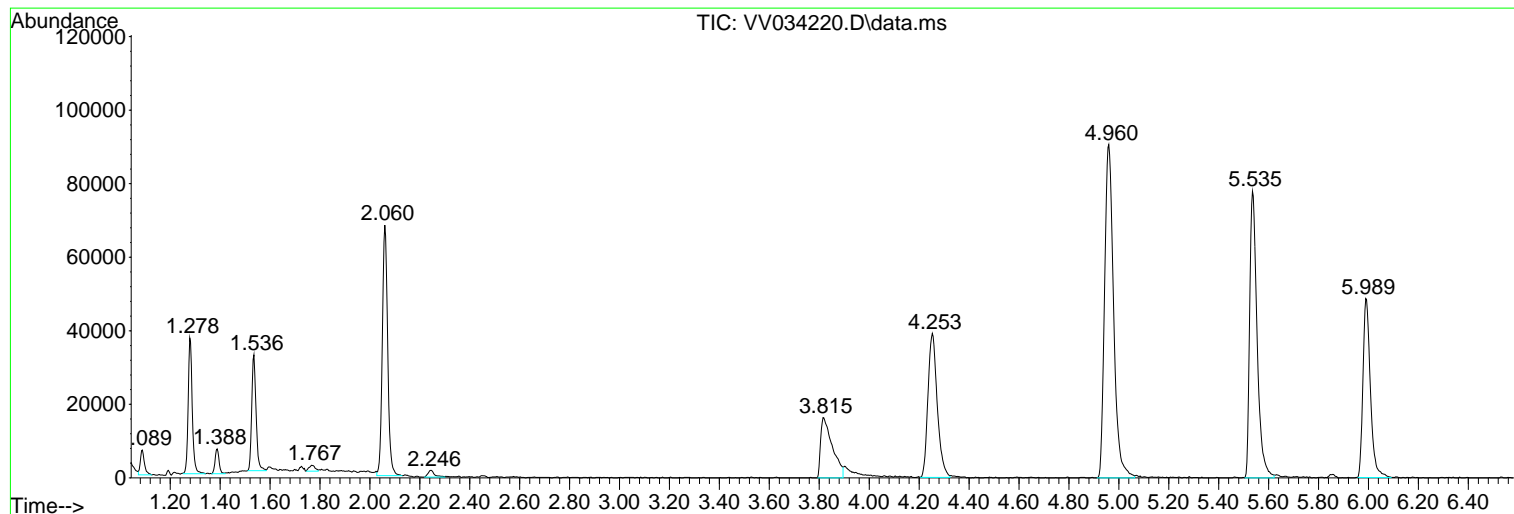
Sum of corrected areas: 1883147

Data Path : Z:\voasrv\HPCHEM1\MSVOA_V\Data\VV021624\
Data File : VV034220.D
Acq On : 16 Feb 2024 16:24
Operator : SY/MD
Sample : P1501-05
Misc : 25.0mL/MSVOA_V/WATER
ALS Vial : 17 Sample Multiplier: 1

Instrument :
MSVOA_V
ClientSampleId :
E10A1

Quant Method : Z:\voasrv\HPCHEM1\MSVOA_V\Method\SFAMVTR012524WMA.M
Quant Title : TRACE VOA SFAM1.0

TIC Library : C:\Database\NIST20.L
TIC Integration Parameters: LSCINT.P



Library Search Compound Report

Data Path : Z:\voasrv\HPCHEM1\MSVOA_V\Data\VV021624\
Data File : VV034220.D
Acq On : 16 Feb 2024 16:24
Operator : SY/MD
Sample : P1501-05
Misc : 25.0mL/MSVOA_V/WATER
ALS Vial : 17 Sample Multiplier: 1

Instrument :
MSVOA_V
ClientSampleId :
E10A1

Quant Method : Z:\voasrv\HPCHEM1\MSVOA_V\Method\SFAMVTR012524WMA.M
Quant Title : TRACE VOA SFAM1.0

TIC Library : C:\Database\NIST20.L
TIC Integration Parameters: LSCINT.P

No Library Search Compounds Detected

Data Path : Z:\voasrv\HPCHEM1\MSVOA_V\Data\VW021624\
Data File : VW034220.D
Acq On : 16 Feb 2024 16:24
Operator : SY/MD
Sample : P1501-05
Misc : 25.0mL/MSVOA_V/WATER
ALS Vial : 17 Sample Multiplier: 1

Instrument :
MSVOA_V
ClientSampleId :
E10A1

Quant Method : Z:\voasrv\HPCHEM1\MSVOA_V\Method\SFAMVTR012524WMA.M
Quant Title : TRACE VOA SFAM1.0

TIC Library : C:\Database\NIST0.L
TIC Integration Parameters: LSCINT.P

TIC Top Hit name	RT	EstConc	Units	Response	--Internal Standard--		
					#	RT	Resp Conc
