

Data Path : Z:\voasrv\HPCHEM1\MSVOA_V\Data\VW021722\
 Data File : VW024732.D
 Acq On : 17 Feb 2022 19:12
 Operator : SY/MD
 Sample : N1510-11
 Misc : 25.0mL/MSVOA_V/WATER
 ALS Vial : 22 Sample Multiplier: 1

Instrument :
 MSVOA_V
 ClientSampleId :
 F4M36

Quant Time: Feb 18 07:35:56 2022
 Quant Method : Z:\voasrv\HPCHEM1\MSVOA_V\Method\SFAMVTR021722WMA.M
 Quant Title : TRACE VOA SFAM1.0
 QLast Update : Fri Feb 18 07:32:51 2022
 Response via : Initial Calibration

Compound	R.T.	QIon	Response	Conc	Units	Dev(Min)

Internal Standards						
1) 1,4-Difluorobenzene	5.619	114	168535	5.000	ug/L	0.00
28) Chlorobenzene-d5	8.853	117	154235	5.000	ug/L	0.00
58) 1,4-Dichlorobenzene-d4	11.249	152	68324	5.000	ug/L	0.00
System Monitoring Compounds						
4) Vinyl Chloride-d3	1.307	65	67228	4.703	ug/L	0.00
Spiked Amount	5.000	Range 40 - 130	Recovery	=	94.000%	
7) Chloroethane-d5	1.568	69	55738	4.753	ug/L	0.00
Spiked Amount	5.000	Range 65 - 130	Recovery	=	95.000%	
11) 1,1-Dichloroethene-d2	2.111	63	90050	3.438	ug/L	0.00
Spiked Amount	5.000	Range 60 - 125	Recovery	=	68.800%	
20) 2-Butanone-d5	3.889	46	103490	50.684	ug/L	0.00
Spiked Amount	50.000	Range 40 - 130	Recovery	=	101.360%	
24) Chloroform-d	4.349	84	103012	4.618	ug/L	0.00
Spiked Amount	5.000	Range 70 - 125	Recovery	=	92.400%	
26) 1,2-Dichloroethane-d4	5.034	65	48098	4.838	ug/L	0.00
Spiked Amount	5.000	Range 70 - 130	Recovery	=	96.800%	
32) Benzene-d6	5.050	84	215491	4.843	ug/L	0.00
Spiked Amount	5.000	Range 70 - 125	Recovery	=	96.800%	
36) 1,2-Dichloropropane-d6	6.069	67	64321	4.912	ug/L	0.00
Spiked Amount	5.000	Range 60 - 140	Recovery	=	98.200%	
41) Toluene-d8	7.317	98	192078	4.751	ug/L	0.00
Spiked Amount	5.000	Range 70 - 130	Recovery	=	95.000%	
43) trans-1,3-Dichloroprop...	7.625	79	20174	4.625	ug/L	0.00
Spiked Amount	5.000	Range 55 - 130	Recovery	=	92.400%	
46) 2-Hexanone-d5	8.088	63	81204	47.310	ug/L	0.00
Spiked Amount	50.000	Range 45 - 130	Recovery	=	94.620%	
56) 1,1,2,2-Tetrachloroeth...	10.217	84	36977	4.686	ug/L	0.00
Spiked Amount	5.000	Range 65 - 120	Recovery	=	93.800%	
66) 1,2-Dichlorobenzene-d4	11.622	152	57871	4.895	ug/L	0.00
Spiked Amount	5.000	Range 80 - 120	Recovery	=	98.000%	

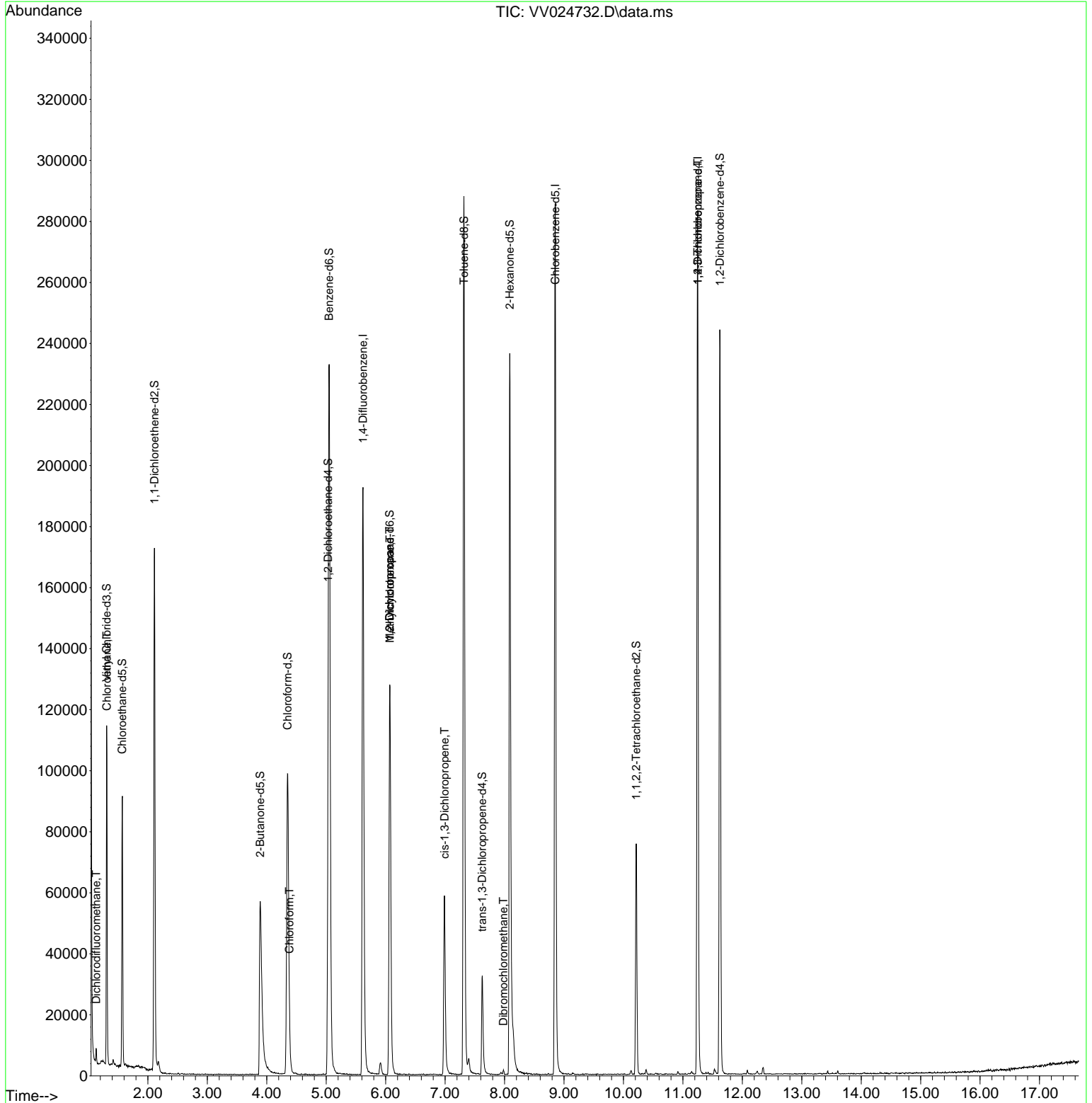
Target Compounds						Qvalue
2) Dichlorodifluoromethane	1.130	85	2276	0.138	ug/L	90
8) Chloroethane	1.310	64	901	0.081	ug/L #	1
25) Chloroform	4.381	83	2369	0.097	ug/L	85
35) Methylcyclohexane	6.072	83	14935	0.668	ug/L #	19
37) 1,2-Dichloropropane	6.069	63	7323	0.594	ug/L #	86
39) cis-1,3-Dichloropropene	6.992	75	1649	0.096	ug/L #	80
49) Dibromochloromethane	7.982	129	298	0.033	ug/L #	11
61) 1,2,3-Trichloropropane	11.249	75	9335	1.508	ug/L #	69

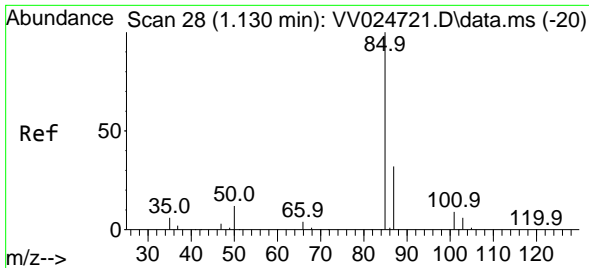
(#) = qualifier out of range (m) = manual integration (+) = signals summed

Data Path : Z:\voasrv\HPCHEM1\MSVOA_V\Data\VV021722\
 Data File : VV024732.D
 Acq On : 17 Feb 2022 19:12
 Operator : SY/MD
 Sample : N1510-11
 Misc : 25.0mL/MSVOA_V/WATER
 ALS Vial : 22 Sample Multiplier: 1

Instrument :
 MSVOA_V
 ClientSampleId :
 F4M36

Quant Time: Feb 18 07:35:56 2022
 Quant Method : Z:\voasrv\HPCHEM1\MSVOA_V\Method\SFAMVTR021722WMA.M
 Quant Title : TRACE VOA SFAM1.0
 QLast Update : Fri Feb 18 07:32:51 2022
 Response via : Initial Calibration

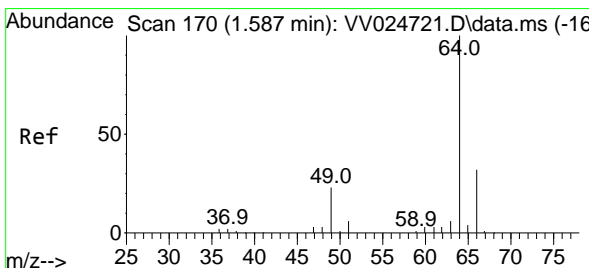
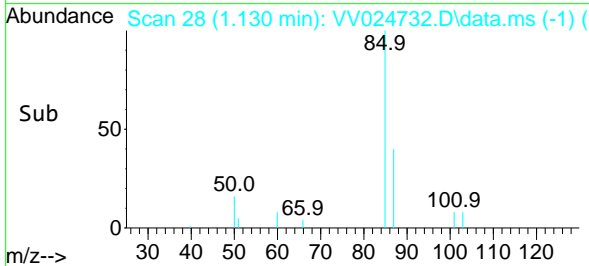
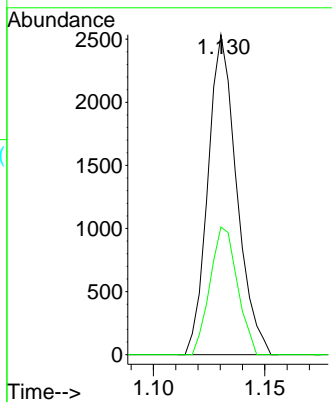
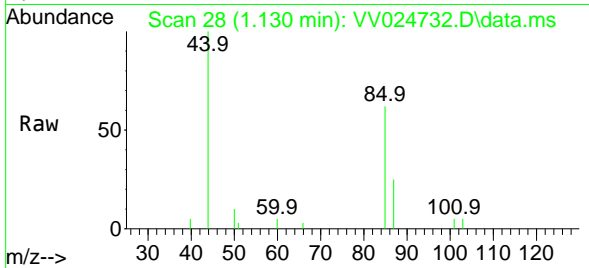




#2
 Dichlorodifluoromethane
 Concen: 0.138 ug/L
 RT: 1.130 min Scan# 21
 Delta R.T. -0.000 min
 Lab File: VV024732.D
 Acq: 17 Feb 2022 19:12

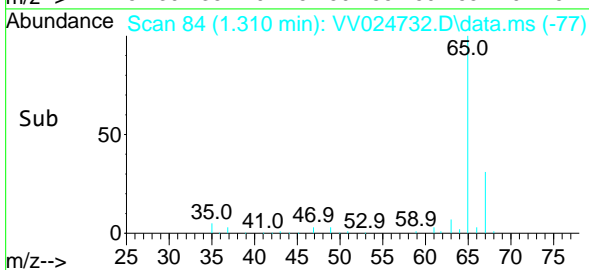
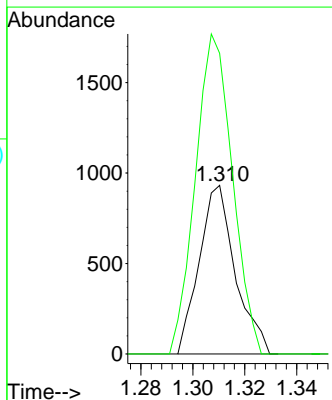
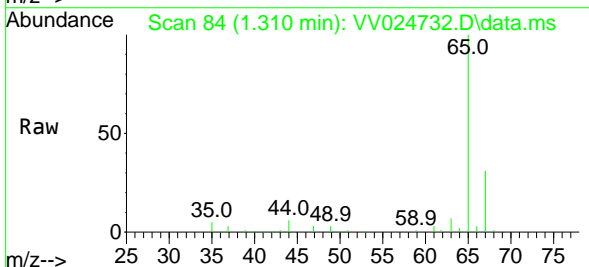
Instrument :
 MSVOA_V
 ClientSampleId :
 F4M36

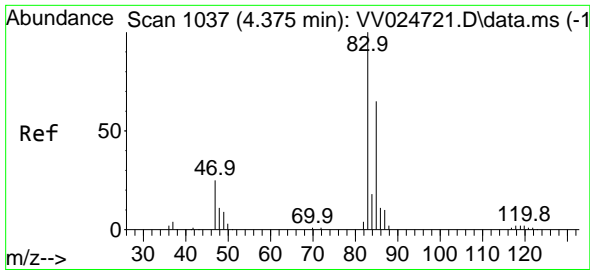
Tgt Ion: 85 Resp: 2276
 Ion Ratio Lower Upper
 85 100
 87 37.9 25.9 38.9



#8
 Chloroethane
 Concen: 0.081 ug/L
 RT: 1.310 min Scan# 84
 Delta R.T. -0.277 min
 Lab File: VV024732.D
 Acq: 17 Feb 2022 19:12

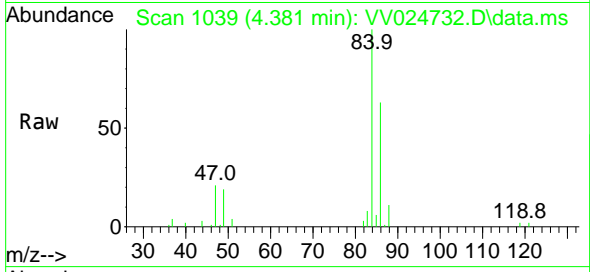
Tgt Ion: 64 Resp: 901
 Ion Ratio Lower Upper
 64 100
 66 178.3 22.5 41.9#



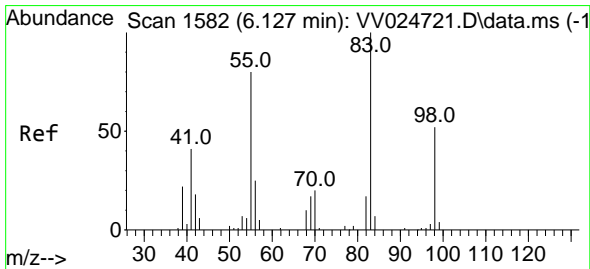
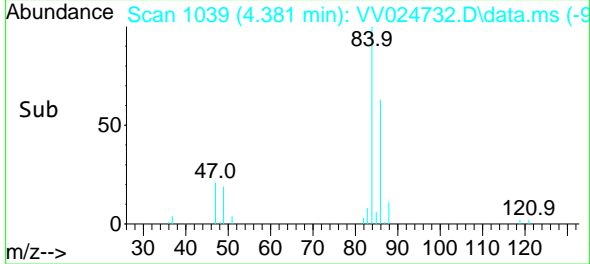
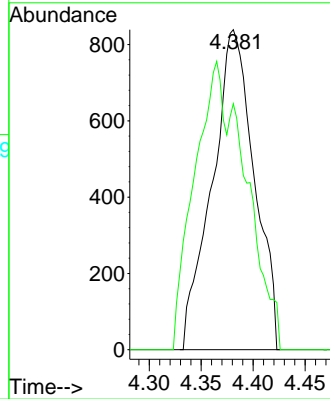


#25
 Chloroform
 Concen: 0.097 ug/L
 RT: 4.381 min Scan# 1039
 Delta R.T. 0.006 min
 Lab File: VV024732.D
 Acq: 17 Feb 2022 19:12

Instrument : MSVOA_V
 ClientSampleId : F4M36

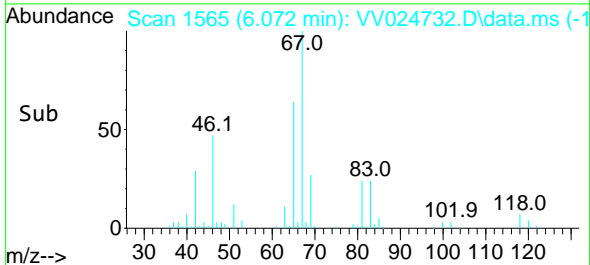
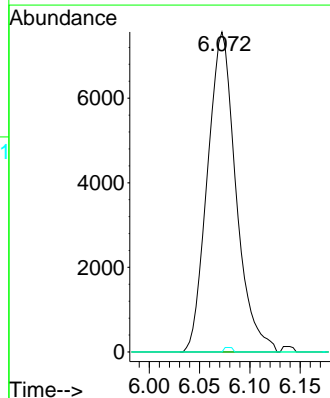
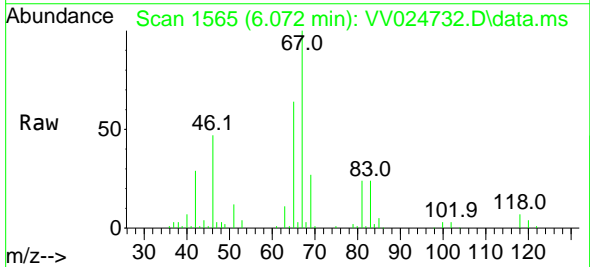


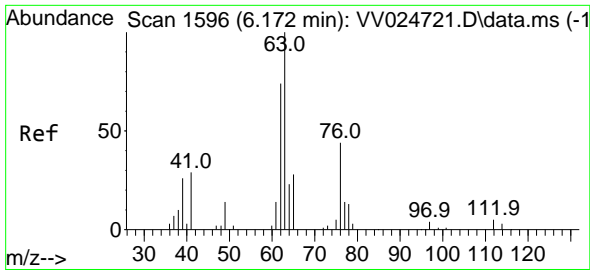
Tgt Ion: 83 Resp: 2369
 Ion Ratio Lower Upper
 83 100
 85 76.9 45.5 84.5



#35
 Methylcyclohexane
 Concen: 0.668 ug/L
 RT: 6.072 min Scan# 1565
 Delta R.T. -0.055 min
 Lab File: VV024732.D
 Acq: 17 Feb 2022 19:12

Tgt Ion: 83 Resp: 14935
 Ion Ratio Lower Upper
 83 100
 55 0.0 58.8 88.2#
 98 0.4 38.6 58.0#

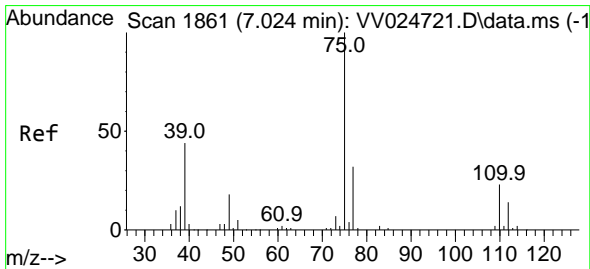
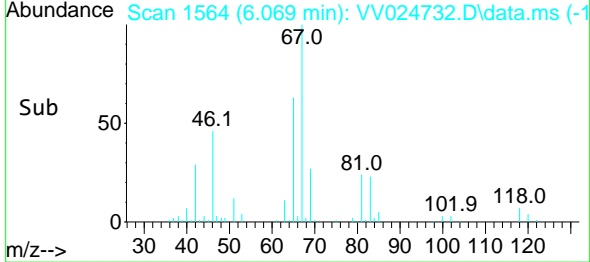
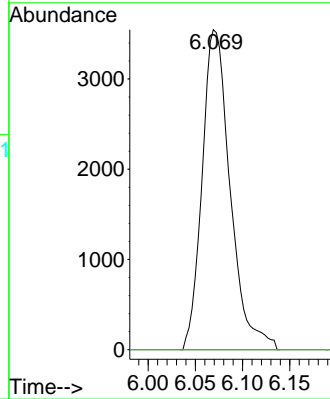
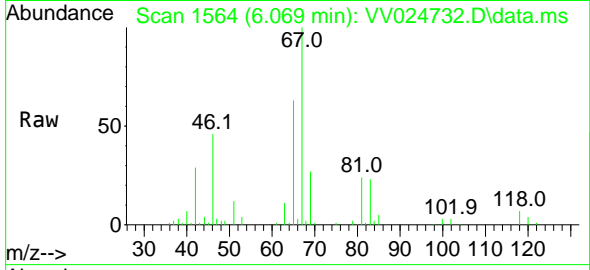




#37
 1,2-Dichloropropane
 Concen: 0.594 ug/L
 RT: 6.069 min Scan# 1111
 Delta R.T. -0.103 min
 Lab File: VV024732.D
 Acq: 17 Feb 2022 19:12

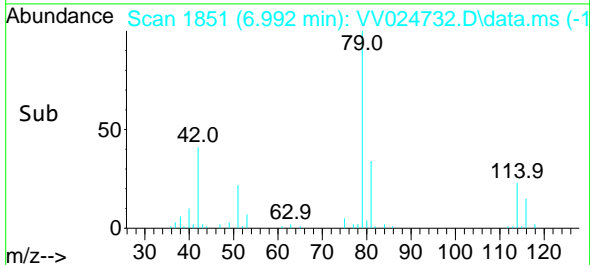
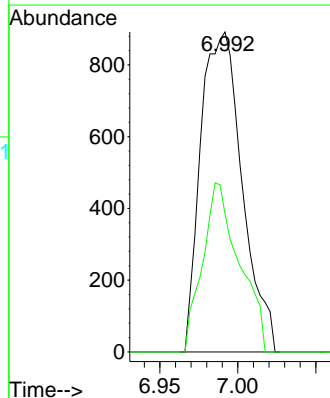
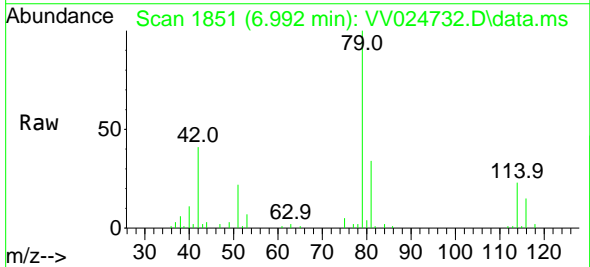
Instrument : MSVOA_V
 ClientSampleId : F4M36

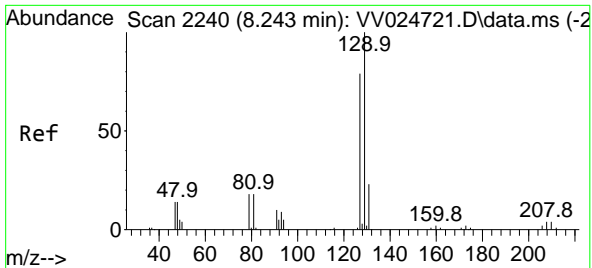
Tgt Ion: 63 Resp: 7323
 Ion Ratio Lower Upper
 63 100
 112 0.0 3.8 5.6#



#39
 cis-1,3-Dichloropropene
 Concen: 0.096 ug/L
 RT: 6.992 min Scan# 1851
 Delta R.T. -0.032 min
 Lab File: VV024732.D
 Acq: 17 Feb 2022 19:12

Tgt Ion: 75 Resp: 1649
 Ion Ratio Lower Upper
 75 100
 77 43.2 22.3 41.5#

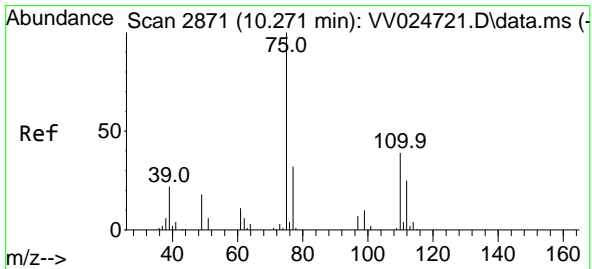
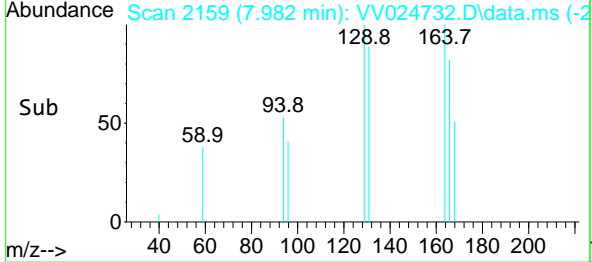
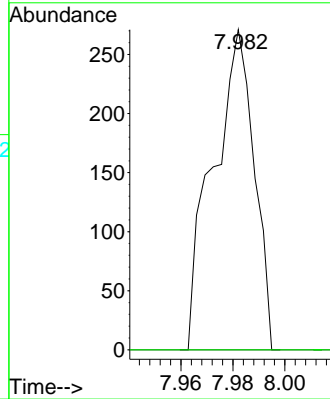
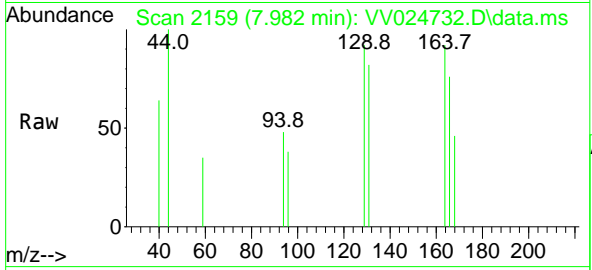




#49
 Dibromochloromethane
 Concen: 0.033 ug/L
 RT: 7.982 min Scan# 2159
 Delta R.T. -0.261 min
 Lab File: VV024732.D
 Acq: 17 Feb 2022 19:12

Instrument : MSVOA_V
 ClientSampleId : F4M36

Tgt Ion:129 Resp: 298
 Ion Ratio Lower Upper
 129 100
 127 0.0 53.6 99.6#



#61
 1,2,3-Trichloropropane
 Concen: 1.508 ug/L
 RT: 11.249 min Scan# 3175
 Delta R.T. 0.977 min
 Lab File: VV024732.D
 Acq: 17 Feb 2022 19:12

Tgt Ion: 75 Resp: 9335
 Ion Ratio Lower Upper
 75 100
 77 32.6 26.3 39.5
 110 3.1 30.3 45.5#

