

Data Path : Z:\voasrv\HPCHEM1\MSVOA_V\Data\VW021822\
 Data File : VW024755.D
 Acq On : 18 Feb 2022 15:53
 Operator : SY/MD
 Sample : N1522-03DL 5X
 Misc : 25.0mL/MSVOA_V/WATER
 ALS Vial : 12 Sample Multiplier: 1

Instrument :
 MSVOA_V
ClientSampleId :
 F4M92DL

Quant Time: Feb 19 00:45:43 2022
 Quant Method : Z:\voasrv\HPCHEM1\MSVOA_V\Method\SFAMVTR021722WMA.M
 Quant Title : TRACE VOA SFAM1.0
 QLast Update : Sat Feb 19 00:43:23 2022
 Response via : Initial Calibration

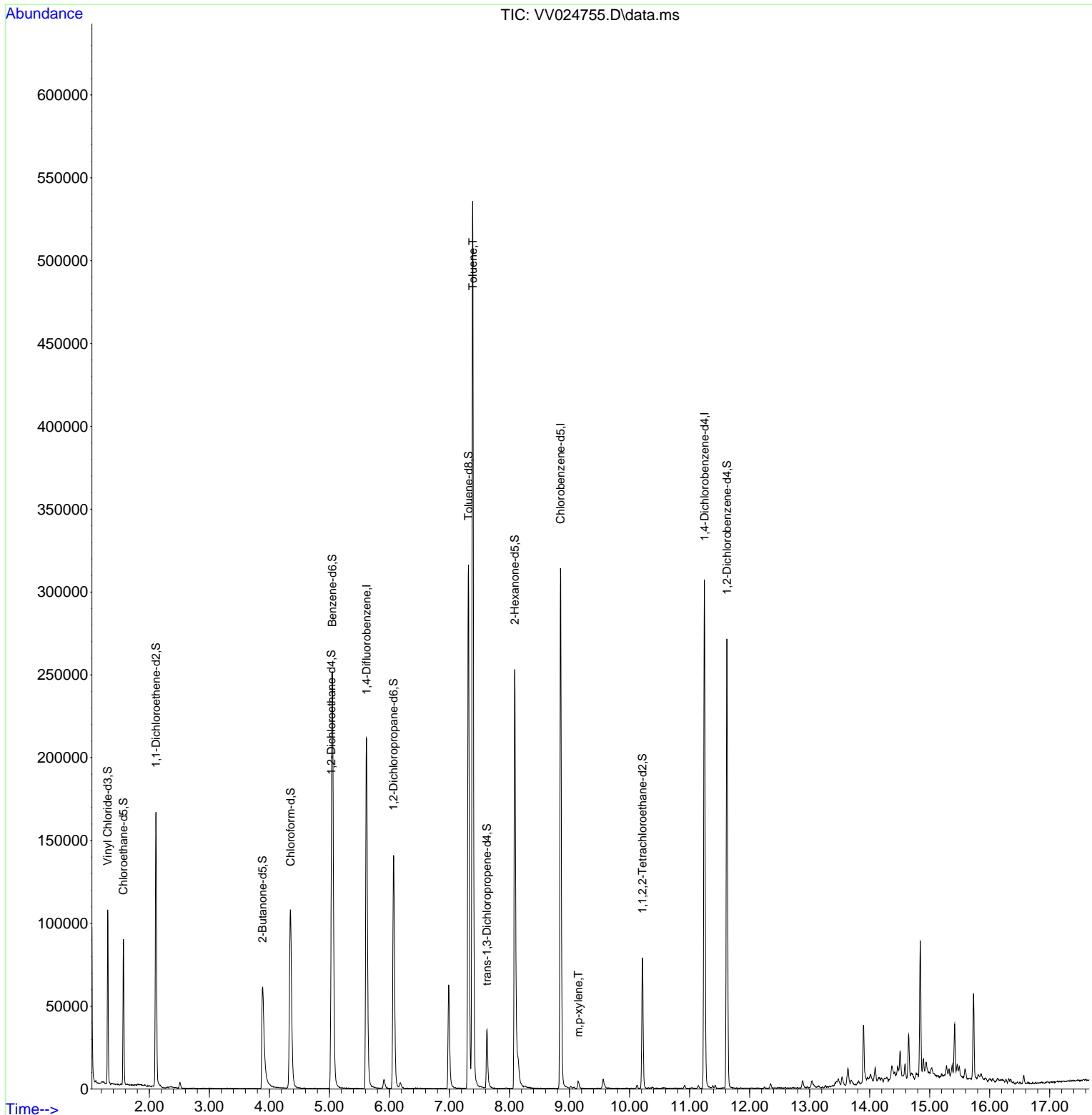
| Compound | R.T. | QIon | Response | Conc | Units | Dev(Min) |
|-------------------------------|--------|----------------|----------|--------|---------|----------|
| ----- | | | | | | |
| Internal Standards | | | | | | |
| 1) 1,4-Difluorobenzene | 5.619 | 114 | 185777 | 5.000 | ug/L | 0.00 |
| 28) Chlorobenzene-d5 | 8.850 | 117 | 168617 | 5.000 | ug/L | 0.00 |
| 58) 1,4-Dichlorobenzene-d4 | 11.249 | 152 | 76228 | 5.000 | ug/L | 0.00 |
| System Monitoring Compounds | | | | | | |
| 4) Vinyl Chloride-d3 | 1.307 | 65 | 66594 | 4.226 | ug/L | 0.00 |
| Spiked Amount | 5.000 | Range 40 - 130 | Recovery | = | 84.600% | |
| 7) Chloroethane-d5 | 1.568 | 69 | 55687 | 4.308 | ug/L | 0.00 |
| Spiked Amount | 5.000 | Range 65 - 130 | Recovery | = | 86.200% | |
| 11) 1,1-Dichloroethene-d2 | 2.111 | 63 | 88341 | 3.059 | ug/L | 0.00 |
| Spiked Amount | 5.000 | Range 60 - 125 | Recovery | = | 61.200% | |
| 20) 2-Butanone-d5 | 3.886 | 46 | 111360 | 49.477 | ug/L | 0.00 |
| Spiked Amount | 50.000 | Range 40 - 130 | Recovery | = | 98.960% | |
| 24) Chloroform-d | 4.352 | 84 | 112506 | 4.576 | ug/L | 0.00 |
| Spiked Amount | 5.000 | Range 70 - 125 | Recovery | = | 91.600% | |
| 26) 1,2-Dichloroethane-d4 | 5.034 | 65 | 51633 | 4.711 | ug/L | 0.00 |
| Spiked Amount | 5.000 | Range 70 - 130 | Recovery | = | 94.200% | |
| 32) Benzene-d6 | 5.050 | 84 | 238465 | 4.902 | ug/L | 0.00 |
| Spiked Amount | 5.000 | Range 70 - 125 | Recovery | = | 98.000% | |
| 36) 1,2-Dichloropropane-d6 | 6.069 | 67 | 70815 | 4.947 | ug/L | 0.00 |
| Spiked Amount | 5.000 | Range 60 - 140 | Recovery | = | 99.000% | |
| 41) Toluene-d8 | 7.317 | 98 | 208063 | 4.707 | ug/L | 0.00 |
| Spiked Amount | 5.000 | Range 70 - 130 | Recovery | = | 94.200% | |
| 43) trans-1,3-Dichloroprop... | 7.625 | 79 | 21842 | 4.580 | ug/L | 0.00 |
| Spiked Amount | 5.000 | Range 55 - 130 | Recovery | = | 91.600% | |
| 46) 2-Hexanone-d5 | 8.088 | 63 | 90126 | 48.029 | ug/L | 0.00 |
| Spiked Amount | 50.000 | Range 45 - 130 | Recovery | = | 96.060% | |
| 56) 1,1,2,2-Tetrachloroeth... | 10.217 | 84 | 39439 | 4.571 | ug/L | 0.00 |
| Spiked Amount | 5.000 | Range 65 - 120 | Recovery | = | 91.400% | |
| 66) 1,2-Dichlorobenzene-d4 | 11.622 | 152 | 65063 | 4.933 | ug/L | 0.00 |
| Spiked Amount | 5.000 | Range 80 - 120 | Recovery | = | 98.600% | |
| Target Compounds | | | | | | |
| | | | | | | Qvalue |
| 42) Toluene | 7.387 | 91 | 387373 | 6.373 | ug/L | 99 |
| 53) m,p-xylene | 9.146 | 106 | 1543 | 0.062 | ug/L | 79 |
| ----- | | | | | | |

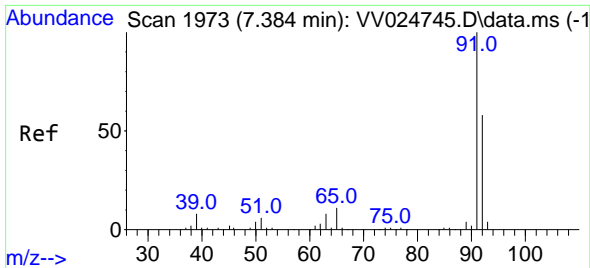
(#) = qualifier out of range (m) = manual integration (+) = signals summed

Data Path : Z:\voasrv\HPCHEM1\MSVOA_V\Data\VV021822\
 Data File : VV024755.D
 Acq On : 18 Feb 2022 15:53
 Operator : SY/MD
 Sample : N1522-03DL 5X
 Misc : 25.0mL/MSVOA_V/WATER
 ALS Vial : 12 Sample Multiplier: 1

Instrument :
 MSVOA_V
 ClientSampleId :
 F4M92DL

Quant Time: Feb 19 00:45:43 2022
 Quant Method : Z:\voasrv\HPCHEM1\MSVOA_V\Method\SFAMVTR021722WMA.M
 Quant Title : TRACE VOA SFAM1.0
 QLast Update : Sat Feb 19 00:43:23 2022
 Response via : Initial Calibration

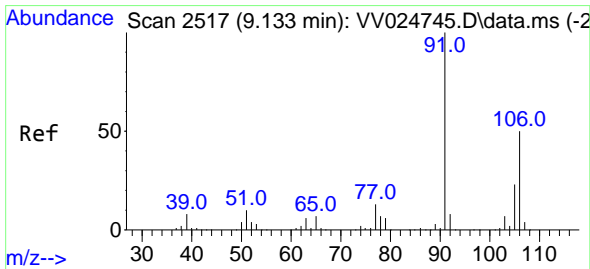
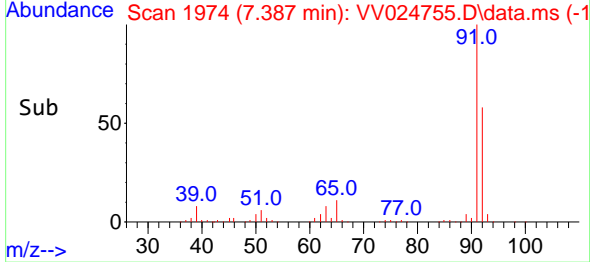
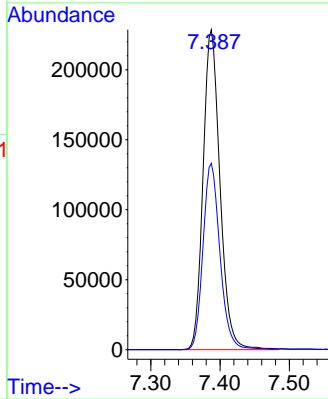
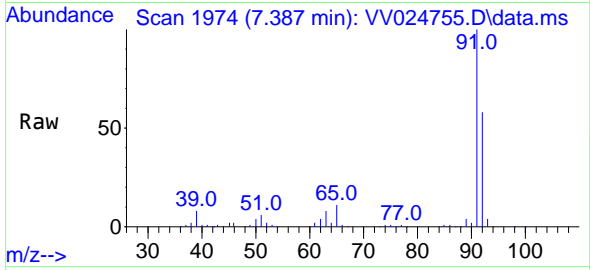




#42
 Toluene
 Concen: 6.373 ug/L
 RT: 7.387 min Scan# 1974
 Delta R.T. 0.003 min
 Lab File: VV024755.D
 Acq: 18 Feb 2022 15:53

Instrument : MSVOA_V
 ClientSampleId : F4M92DL

Tgt Ion: 91 Resp: 387373
 Ion Ratio Lower Upper
 91 100
 92 58.3 40.3 74.9



#53
 m,p-xylene
 Concen: 0.062 ug/L
 RT: 9.146 min Scan# 2521
 Delta R.T. 0.013 min
 Lab File: VV024755.D
 Acq: 18 Feb 2022 15:53

Tgt Ion: 106 Resp: 1543
 Ion Ratio Lower Upper
 106 100
 91 172.2 143.6 266.6

