

Data Path : Z:\voasrv\HPCHEM1\MSVOA\_V\Data\VW022024\  
 Data File : VW034273.D  
 Acq On : 20 Feb 2024 16:31  
 Operator : SY/MD  
 Sample : P1501-21  
 Misc : 25.0mL/MSVOA\_V/WATER  
 ALS Vial : 19 Sample Multiplier: 1

Instrument :  
 MSVOA\_V  
 ClientSampleId :  
 E10C0

Quant Time: Feb 21 01:45:37 2024  
 Quant Method : Z:\voasrv\HPCHEM1\MSVOA\_V\Method\SFAMVTR012524WMA.M  
 Quant Title : TRACE VOA SFAM1.0  
 QLast Update : Wed Feb 21 01:41:15 2024  
 Response via : Initial Calibration

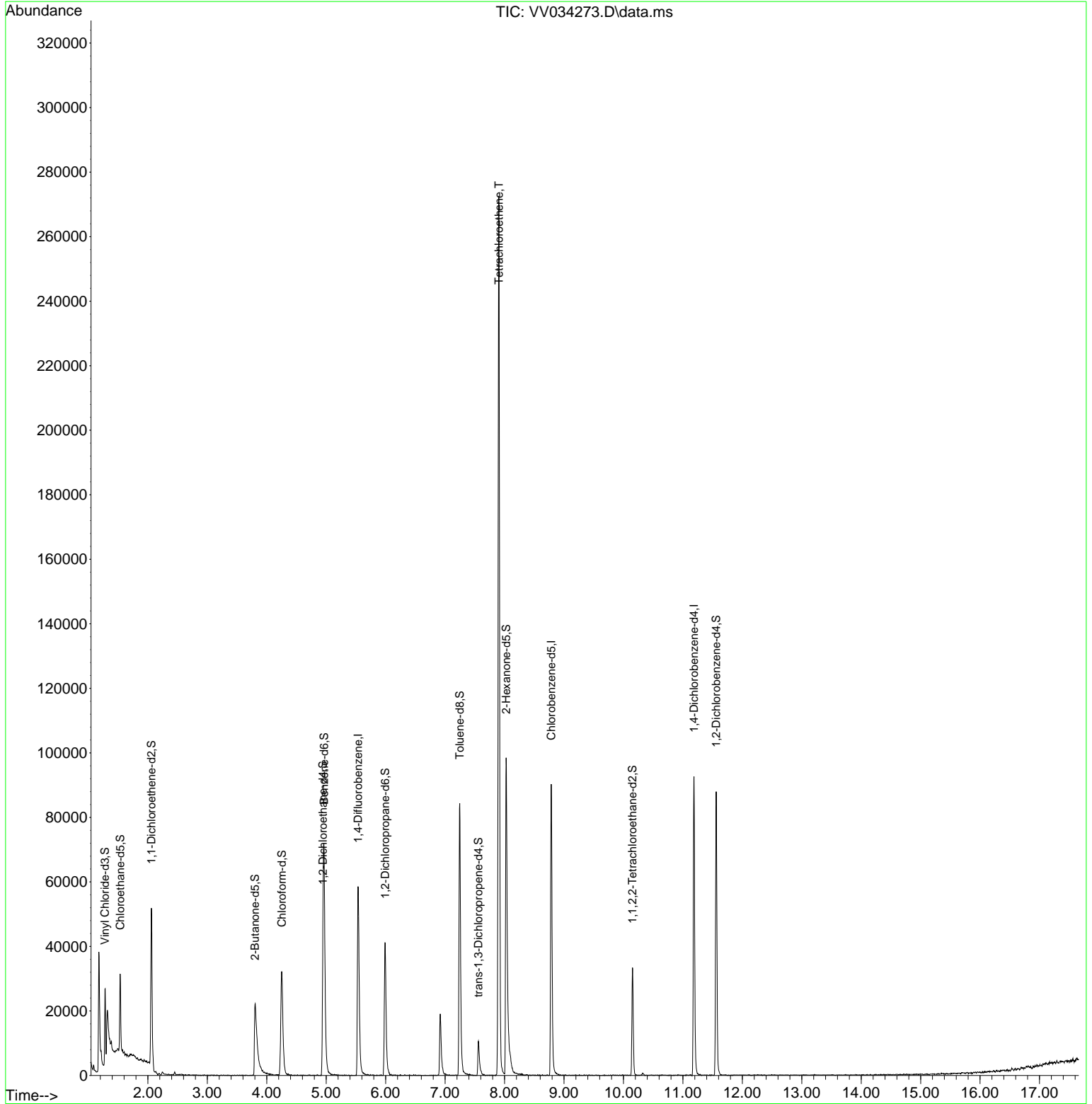
Compound	R.T.	QIon	Response	Conc	Units	Dev(Min)
-----						
Internal Standards						
1) 1,4-Difluorobenzene	5.535	114	53109	5.000	ug/L	0.00
28) Chlorobenzene-d5	8.786	117	50186	5.000	ug/L	0.00
58) 1,4-Dichlorobenzene-d4	11.188	152	23838	5.000	ug/L	0.00
System Monitoring Compounds						
4) Vinyl Chloride-d3	1.278	65	16011	3.893	ug/L	0.00
Spiked Amount	5.000	Range 40 - 130	Recovery	=	77.800%	
7) Chloroethane-d5	1.536	69	14844	4.120	ug/L	0.00
Spiked Amount	5.000	Range 65 - 130	Recovery	=	82.400%	
11) 1,1-Dichloroethene-d2	2.060	65	8561	4.316	ug/L	0.00
Spiked Amount	5.000	Range 60 - 125	Recovery	=	86.400%	
20) 2-Butanone-d5	3.802	46	43710	63.275	ug/L	-0.04
Spiked Amount	50.000	Range 40 - 130	Recovery	=	126.560%	
24) Chloroform-d	4.252	84	34953	4.677	ug/L	0.00
Spiked Amount	5.000	Range 70 - 125	Recovery	=	93.600%	
26) 1,2-Dichloroethane-d4	4.944	65	20239	5.794	ug/L	0.00
Spiked Amount	5.000	Range 70 - 130	Recovery	=	115.800%	
32) Benzene-d6	4.963	84	62804	4.171	ug/L	0.00
Spiked Amount	5.000	Range 70 - 125	Recovery	=	83.400%	
36) 1,2-Dichloropropane-d6	5.992	67	18497	4.395	ug/L	0.00
Spiked Amount	5.000	Range 60 - 140	Recovery	=	87.800%	
41) Toluene-d8	7.246	98	57268	4.138	ug/L	0.00
Spiked Amount	5.000	Range 70 - 130	Recovery	=	82.800%	
43) trans-1,3-Dichloroprop...	7.561	79	7379	4.643	ug/L	0.00
Spiked Amount	5.000	Range 55 - 130	Recovery	=	92.800%	
46) 2-Hexanone-d5	8.027	63	35665	62.864	ug/L	0.00
Spiked Amount	50.000	Range 45 - 130	Recovery	=	125.720%	
56) 1,1,2,2-Tetrachloroeth...	10.153	84	15500	6.075	ug/L	0.00
Spiked Amount	5.000	Range 65 - 120	Recovery	=	121.400%#	
66) 1,2-Dichlorobenzene-d4	11.561	152	22306	5.145	ug/L	0.00
Spiked Amount	5.000	Range 80 - 120	Recovery	=	103.000%	
Target Compounds						
47) Tetrachloroethene	7.905	164	57541	16.256	ug/L	97
-----						

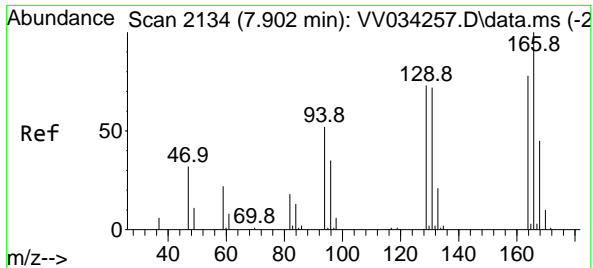
(#) = qualifier out of range (m) = manual integration (+) = signals summed

Data Path : Z:\voasrv\HPCHEM1\MSVOA\_V\Data\VV022024\  
 Data File : VV034273.D  
 Acq On : 20 Feb 2024 16:31  
 Operator : SY/MD  
 Sample : P1501-21  
 Misc : 25.0mL/MSVOA\_V/WATER  
 ALS Vial : 19 Sample Multiplier: 1

Instrument :  
 MSVOA\_V  
 ClientSampleId :  
 E10C0

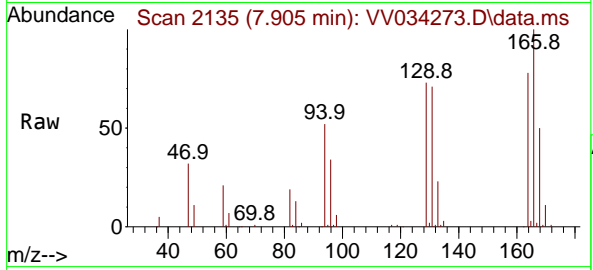
Quant Time: Feb 21 01:45:37 2024  
 Quant Method : Z:\voasrv\HPCHEM1\MSVOA\_V\Method\SFAMVTR012524WMA.M  
 Quant Title : TRACE VOA SFAM1.0  
 QLast Update : Wed Feb 21 01:41:15 2024  
 Response via : Initial Calibration





#47  
 Tetrachloroethene  
 Concen: 16.256 ug/L  
 RT: 7.905 min Scan# 21  
 Delta R.T. 0.003 min  
 Lab File: VV034273.D  
 Acq: 20 Feb 2024 16:31

Instrument : MSVOA\_V  
 ClientSampleId : E10C0



Tgt Ion:164 Resp: 57541

Ion	Ratio	Lower	Upper
164	100		
129	92.8	67.8	125.8
131	90.6	63.0	117.0
166	127.8	92.6	172.0

