

Data Path : Z:\voasrv\HPCHEM1\MSVOA_V\Data\VW030822\
 Data File : VW024862.D
 Acq On : 08 Mar 2022 11:09
 Operator : SY/MD
 Sample : N1811-01
 Misc : 25mL/MSVOA_V/WATER
 ALS Vial : 5 Sample Multiplier: 1

Instrument :
 MSVOA_V
 ClientSampleId :

Quant Time: Mar 09 05:02:32 2022
 Quant Method : Z:\voasrv\HPCHEM1\MSVOA_V\Method\SFAMVTR021722WMA.M
 Quant Title : TRACE VOA SFAM1.0
 QLast Update : Wed Mar 09 05:01:56 2022
 Response via : Initial Calibration

Compound	R.T.	QIon	Response	Conc	Units	Dev(Min)

Internal Standards						
1) 1,4-Difluorobenzene	5.609	114	209256	5.000	ug/L	0.00
28) Chlorobenzene-d5	8.847	117	189358	5.000	ug/L	0.00
58) 1,4-Dichlorobenzene-d4	11.246	152	82673	5.000	ug/L	0.00
System Monitoring Compounds						
4) Vinyl Chloride-d3	1.304	65	69996	3.944	ug/L	0.00
Spiked Amount	5.000	Range 40 - 130	Recovery	=	78.800%	
7) Chloroethane-d5	1.564	69	60248	4.138	ug/L	0.00
Spiked Amount	5.000	Range 65 - 130	Recovery	=	82.800%	
11) 1,1-Dichloroethene-d2	2.105	63	91037	2.799	ug/L	0.00
Spiked Amount	5.000	Range 60 - 125	Recovery	=	56.000%#	
20) 2-Butanone-d5	3.899	46	118175	46.613	ug/L	0.00
Spiked Amount	50.000	Range 40 - 130	Recovery	=	93.220%	
24) Chloroform-d	4.343	84	126128	4.554	ug/L	0.00
Spiked Amount	5.000	Range 70 - 125	Recovery	=	91.000%	
26) 1,2-Dichloroethane-d4	5.027	65	57104	4.626	ug/L	0.00
Spiked Amount	5.000	Range 70 - 130	Recovery	=	92.600%	
32) Benzene-d6	5.043	84	264779	4.847	ug/L	0.00
Spiked Amount	5.000	Range 70 - 125	Recovery	=	97.000%	
36) 1,2-Dichloropropane-d6	6.063	67	80401	5.001	ug/L	0.00
Spiked Amount	5.000	Range 60 - 140	Recovery	=	100.000%	
41) Toluene-d8	7.310	98	225117	4.535	ug/L	0.00
Spiked Amount	5.000	Range 70 - 130	Recovery	=	90.800%	
43) trans-1,3-Dichloroprop...	7.619	79	26692	4.984	ug/L	0.00
Spiked Amount	5.000	Range 55 - 130	Recovery	=	99.600%	
46) 2-Hexanone-d5	8.085	63	93447	44.344	ug/L	0.00
Spiked Amount	50.000	Range 45 - 130	Recovery	=	88.680%	
56) 1,1,2,2-Tetrachloroeth...	10.214	84	43849	4.526	ug/L	0.00
Spiked Amount	5.000	Range 65 - 120	Recovery	=	90.600%	
66) 1,2-Dichlorobenzene-d4	11.622	152	68966	4.821	ug/L	0.00
Spiked Amount	5.000	Range 80 - 120	Recovery	=	96.400%	

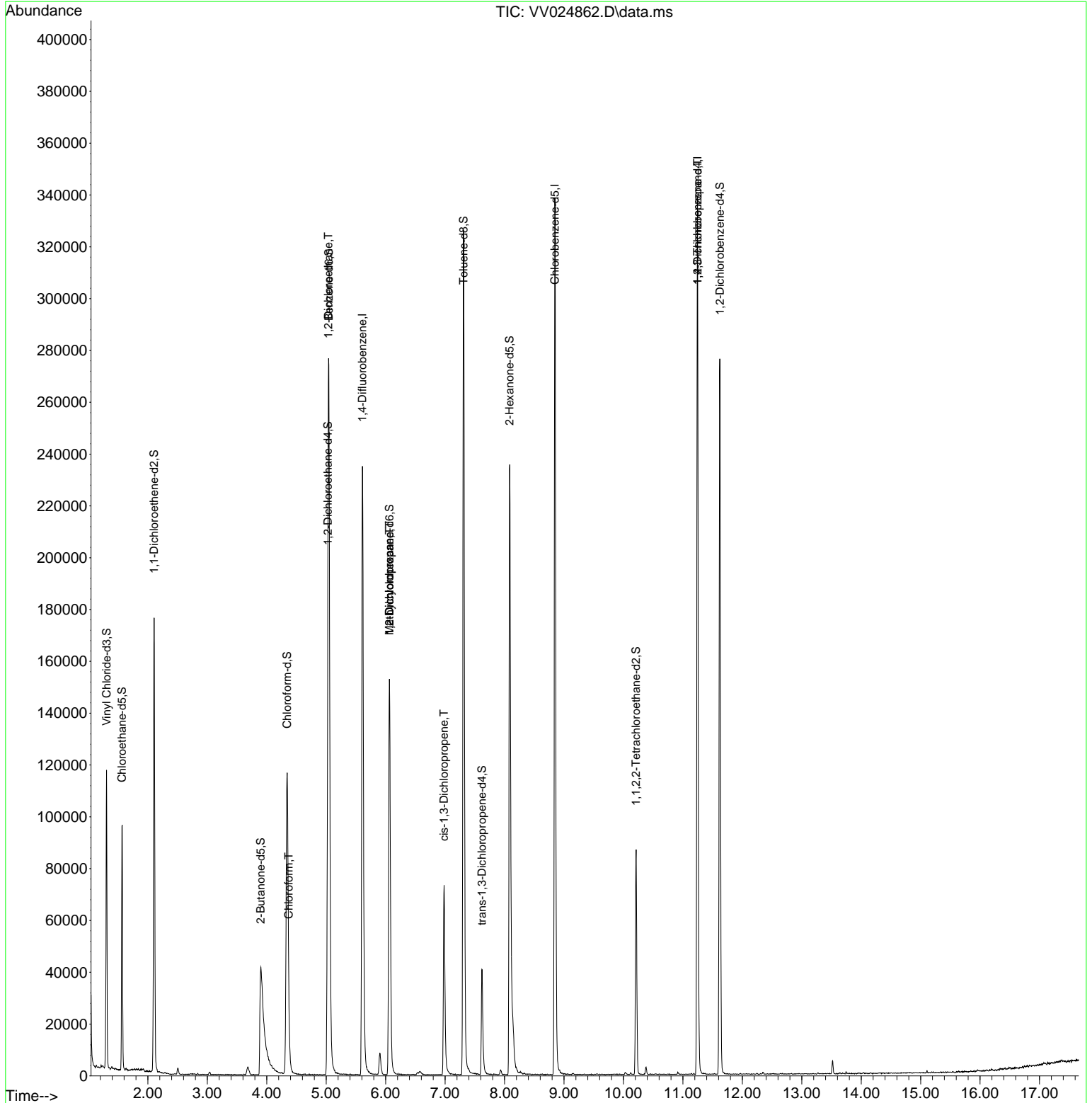
Target Compounds						Qvalue
25) Chloroform	4.368	83	6021	0.198	ug/L	93
27) 1,2-Dichloroethane	5.037	62	1264	0.078	ug/L #	73
35) Methylcyclohexane	6.063	83	18819	0.686	ug/L #	19
37) 1,2-Dichloropropane	6.063	63	8590	0.567	ug/L #	86
39) cis-1,3-Dichloropropene	6.982	75	1879	0.089	ug/L	89
61) 1,2,3-Trichloropropane	11.246	75	11011	1.470	ug/L #	67

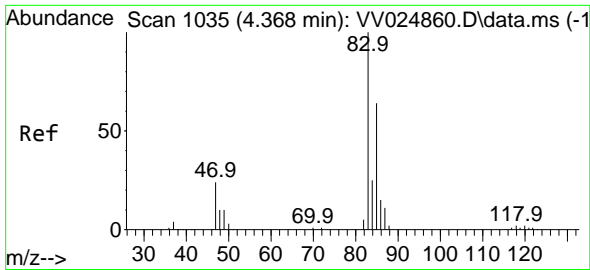
(#) = qualifier out of range (m) = manual integration (+) = signals summed

Data Path : Z:\voasrv\HPCHEM1\MSVOA_V\Data\VV030822\
 Data File : VV024862.D
 Acq On : 08 Mar 2022 11:09
 Operator : SY/MD
 Sample : N1811-01
 Misc : 25mL/MSVOA_V/WATER
 ALS Vial : 5 Sample Multiplier: 1

Instrument :
 MSVOA_V
 ClientSampleId :

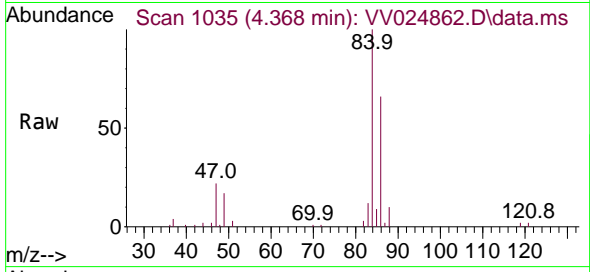
Quant Time: Mar 09 05:02:32 2022
 Quant Method : Z:\voasrv\HPCHEM1\MSVOA_V\Method\SFAMVTR021722WMA.M
 Quant Title : TRACE VOA SFAM1.0
 QLast Update : Wed Mar 09 05:01:56 2022
 Response via : Initial Calibration



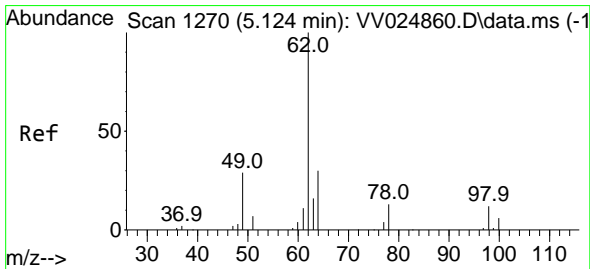
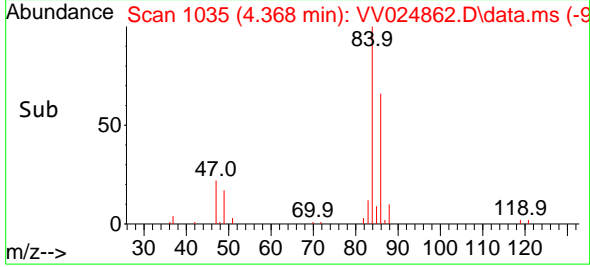
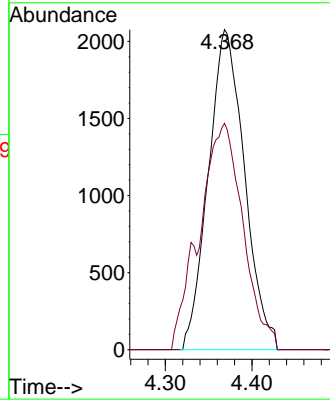


#25
 Chloroform
 Concen: 0.198 ug/L
 RT: 4.368 min Scan# 1035
 Delta R.T. 0.000 min
 Lab File: VV024862.D
 Acq: 08 Mar 2022 11:09

Instrument : MSVOA_V
 ClientSampleId :

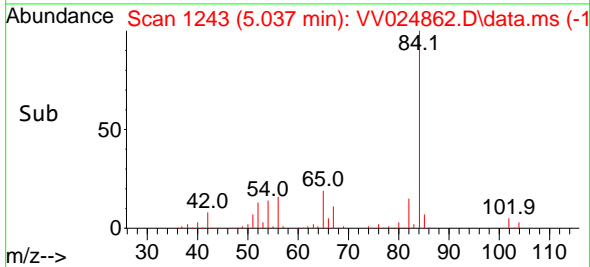
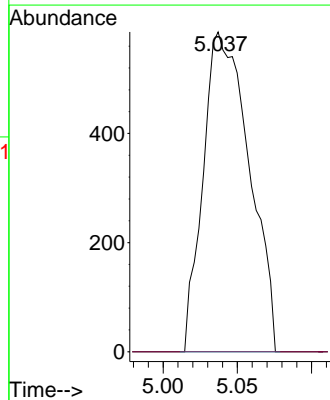
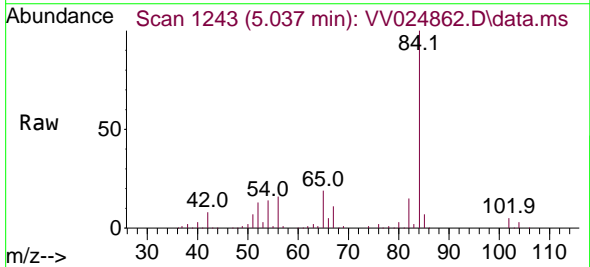


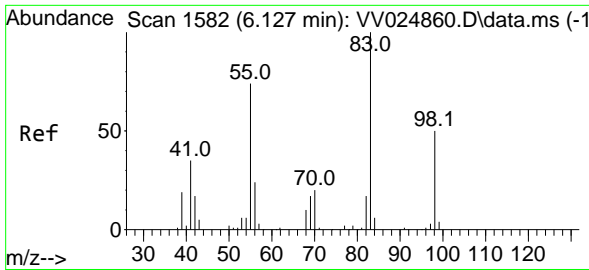
Tgt Ion: 83 Resp: 6021
 Ion Ratio Lower Upper
 83 100
 85 70.8 45.5 84.5



#27
 1,2-Dichloroethane
 Concen: 0.078 ug/L
 RT: 5.037 min Scan# 1243
 Delta R.T. -0.087 min
 Lab File: VV024862.D
 Acq: 08 Mar 2022 11:09

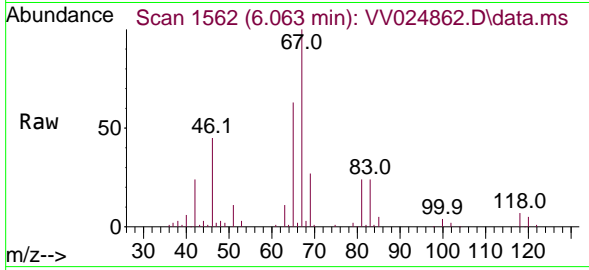
Tgt Ion: 62 Resp: 1264
 Ion Ratio Lower Upper
 62 100
 98 0.0 8.2 12.2#



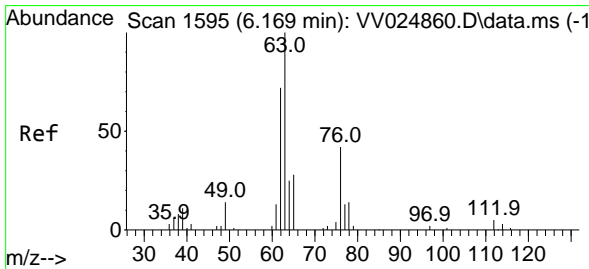
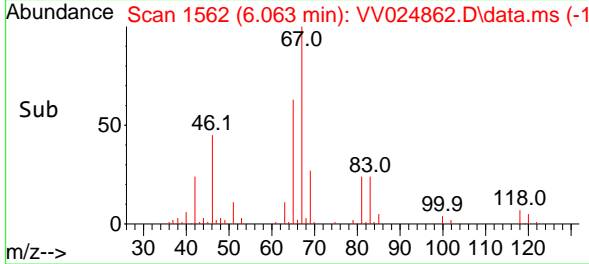
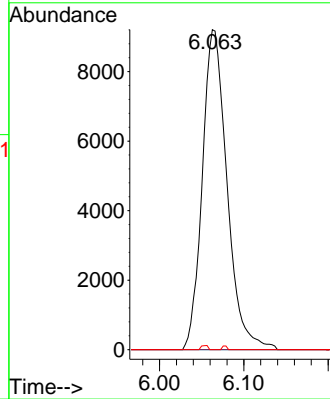


#35
 Methylcyclohexane
 Concen: 0.686 ug/L
 RT: 6.063 min Scan# 1562
 Delta R.T. -0.064 min
 Lab File: VV024862.D
 Acq: 08 Mar 2022 11:09

Instrument : MSVOA_V
 ClientSampleId :

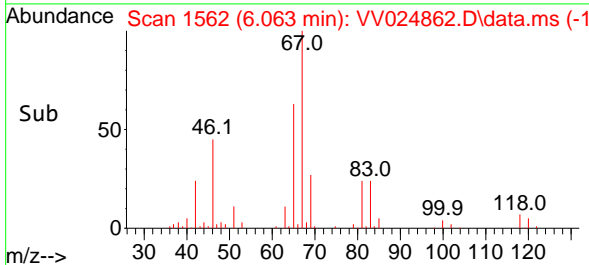
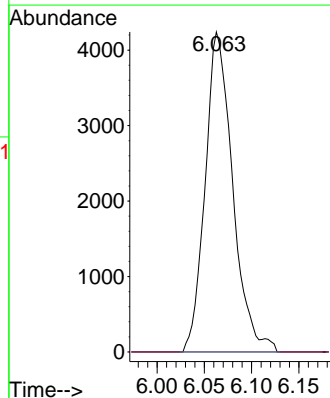
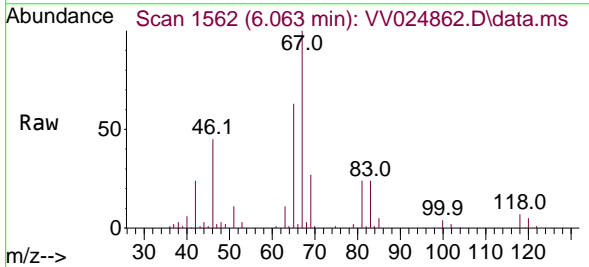


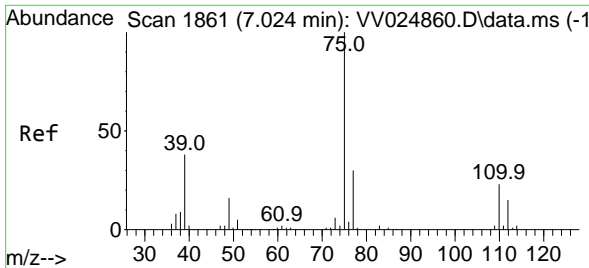
Tgt Ion: 83 Resp: 18819
 Ion Ratio Lower Upper
 83 100
 55 0.0 58.8 88.2#
 98 0.4 38.6 58.0#



#37
 1,2-Dichloropropane
 Concen: 0.567 ug/L
 RT: 6.063 min Scan# 1562
 Delta R.T. -0.106 min
 Lab File: VV024862.D
 Acq: 08 Mar 2022 11:09

Tgt Ion: 63 Resp: 8590
 Ion Ratio Lower Upper
 63 100
 112 0.0 3.8 5.6#

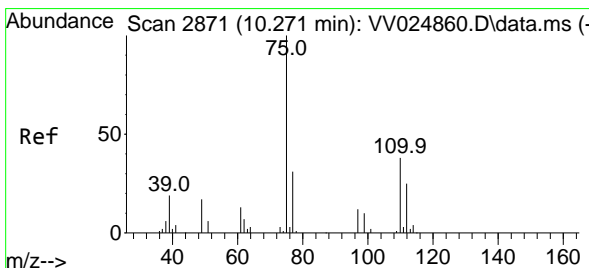
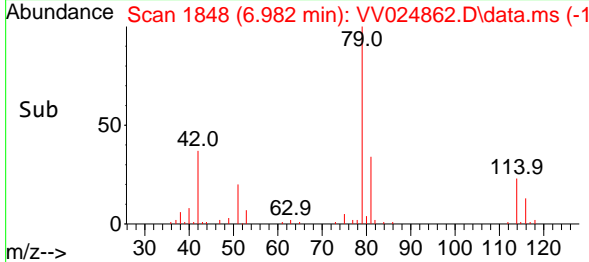
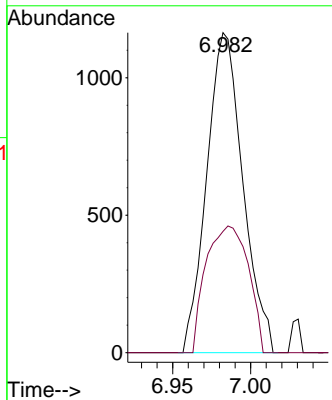
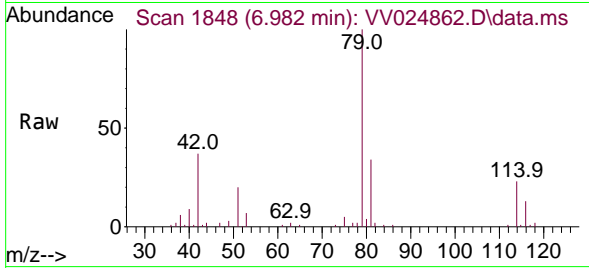




#39
 cis-1,3-Dichloropropene
 Concen: 0.089 ug/L
 RT: 6.982 min Scan# 1187
 Delta R.T. -0.042 min
 Lab File: VV024862.D
 Acq: 08 Mar 2022 11:09

Instrument : MSVOA_V
 ClientSampleId :

Tgt Ion: 75 Resp: 1879
 Ion Ratio Lower Upper
 75 100
 77 37.9 22.3 41.5



#61
 1,2,3-Trichloropropane
 Concen: 1.470 ug/L
 RT: 11.246 min Scan# 3174
 Delta R.T. 0.974 min
 Lab File: VV024862.D
 Acq: 08 Mar 2022 11:09

Tgt Ion: 75 Resp: 11011
 Ion Ratio Lower Upper
 75 100
 77 32.6 26.3 39.5
 110 1.1 30.3 45.5#

