

Data Path : Z:\voasrv\HPCHEM1\MSVOA_V\Data\VW030822\
 Data File : VW024865.D
 Acq On : 08 Mar 2022 12:19
 Operator : SY/MD
 Sample : M1811-08
 Misc : 25mL/MSVOA_V/WATER
 ALS Vial : 8 Sample Multiplier: 1

Instrument :
 MSVOA_V
 ClientSampleId :

Quant Time: Mar 09 05:03:05 2022
 Quant Method : Z:\voasrv\HPCHEM1\MSVOA_V\Method\SFAMVTR021722WMA.M
 Quant Title : TRACE VOA SFAM1.0
 QLast Update : Wed Mar 09 05:01:56 2022
 Response via : Initial Calibration

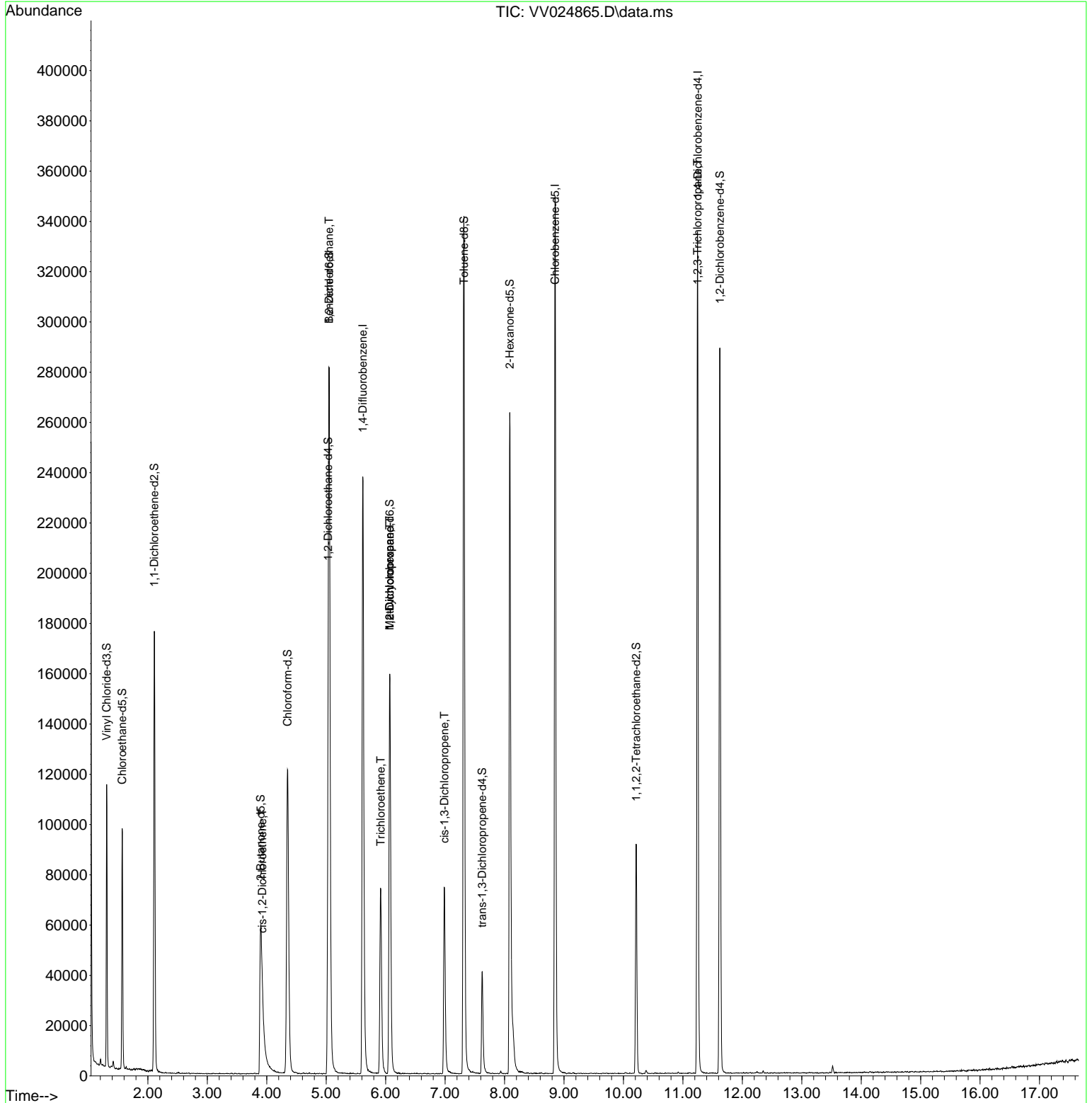
Compound	R.T.	QIon	Response	Conc	Units	Dev(Min)
Internal Standards						
1) 1,4-Difluorobenzene	5.616	114	211818	5.000	ug/L	0.00
28) Chlorobenzene-d5	8.850	117	192132	5.000	ug/L	0.00
58) 1,4-Dichlorobenzene-d4	11.249	152	84593	5.000	ug/L	0.00
System Monitoring Compounds						
4) Vinyl Chloride-d3	1.307	65	70389	3.918	ug/L	0.00
Spiked Amount	5.000	Range 40 - 130	Recovery	=	78.400%	
7) Chloroethane-d5	1.568	69	62239	4.223	ug/L	0.00
Spiked Amount	5.000	Range 65 - 130	Recovery	=	84.400%	
11) 1,1-Dichloroethene-d2	2.108	63	91284	2.773	ug/L	0.00
Spiked Amount	5.000	Range 60 - 125	Recovery	=	55.400%#	
20) 2-Butanone-d5	3.899	46	127588	49.718	ug/L	0.00
Spiked Amount	50.000	Range 40 - 130	Recovery	=	99.440%	
24) Chloroform-d	4.352	84	132125	4.713	ug/L	0.00
Spiked Amount	5.000	Range 70 - 125	Recovery	=	94.200%	
26) 1,2-Dichloroethane-d4	5.034	65	58831	4.708	ug/L	0.00
Spiked Amount	5.000	Range 70 - 130	Recovery	=	94.200%	
32) Benzene-d6	5.050	84	271014	4.889	ug/L	0.00
Spiked Amount	5.000	Range 70 - 125	Recovery	=	97.800%	
36) 1,2-Dichloropropane-d6	6.069	67	83313	5.108	ug/L	0.00
Spiked Amount	5.000	Range 60 - 140	Recovery	=	102.200%	
41) Toluene-d8	7.317	98	233449	4.635	ug/L	0.00
Spiked Amount	5.000	Range 70 - 130	Recovery	=	92.800%	
43) trans-1,3-Dichloroprop...	7.625	79	26491	4.875	ug/L	0.00
Spiked Amount	5.000	Range 55 - 130	Recovery	=	97.600%	
46) 2-Hexanone-d5	8.088	63	98100	45.880	ug/L	0.00
Spiked Amount	50.000	Range 45 - 130	Recovery	=	91.760%	
56) 1,1,2,2-Tetrachloroeth...	10.217	84	46805	4.761	ug/L	0.00
Spiked Amount	5.000	Range 65 - 120	Recovery	=	95.200%	
66) 1,2-Dichlorobenzene-d4	11.622	152	72670	4.965	ug/L	0.00
Spiked Amount	5.000	Range 80 - 120	Recovery	=	99.200%	
Target Compounds						
22) cis-1,2-Dichloroethene	3.924	96	1333	0.078	ug/L	80
27) 1,2-Dichloroethane	5.050	62	1271	0.077	ug/L #	73
34) Trichloroethene	5.918	95	26823	1.557	ug/L	98
35) Methylcyclohexane	6.069	83	19728	0.709	ug/L #	19
37) 1,2-Dichloropropane	6.069	63	8566	0.557	ug/L #	86
39) cis-1,3-Dichloropropene	6.989	75	1883	0.088	ug/L #	60
61) 1,2,3-Trichloropropane	11.246	75	11360	1.482	ug/L #	66

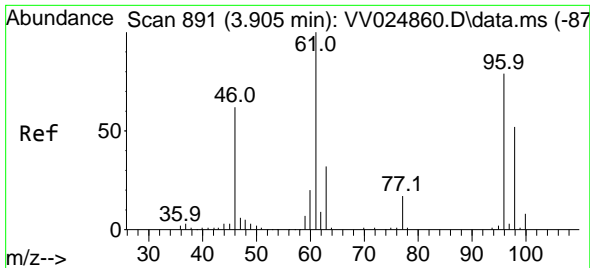
(#) = qualifier out of range (m) = manual integration (+) = signals summed

Data Path : Z:\voasrv\HPCHEM1\MSVOA_V\Data\VV030822\
 Data File : VV024865.D
 Acq On : 08 Mar 2022 12:19
 Operator : SY/MD
 Sample : M1811-08
 Misc : 25mL/MSVOA_V/WATER
 ALS Vial : 8 Sample Multiplier: 1

Instrument :
 MSVOA_V
 ClientSampleId :

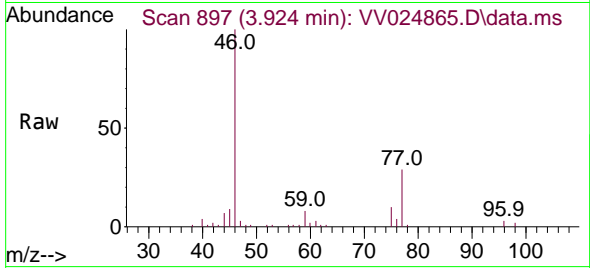
Quant Time: Mar 09 05:03:05 2022
 Quant Method : Z:\voasrv\HPCHEM1\MSVOA_V\Method\SFAMVTR021722WMA.M
 Quant Title : TRACE VOA SFAM1.0
 QLast Update : Wed Mar 09 05:01:56 2022
 Response via : Initial Calibration



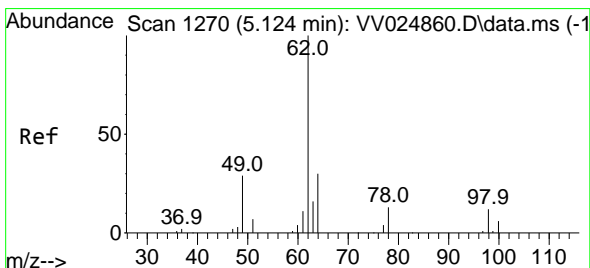
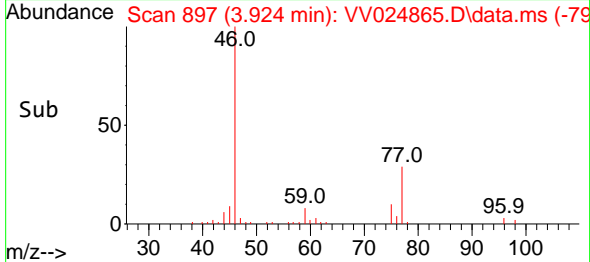
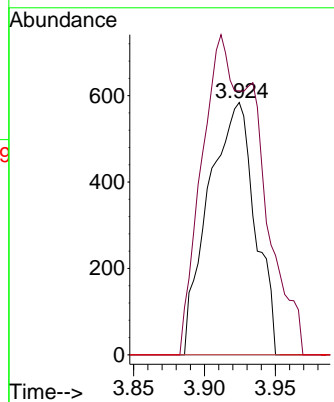


#22
 cis-1,2-Dichloroethene
 Concen: 0.078 ug/L
 RT: 3.924 min Scan# 891
 Delta R.T. 0.019 min
 Lab File: VV024865.D
 Acq: 08 Mar 2022 12:19

Instrument : MSVOA_V
 ClientSampleId :

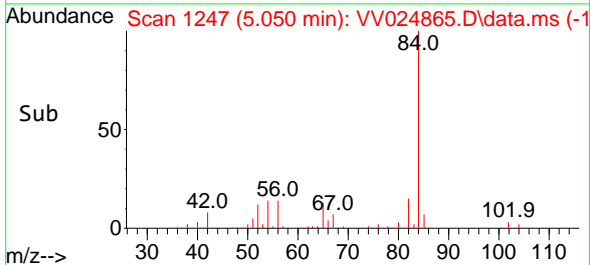
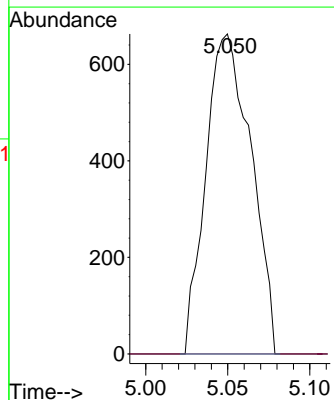
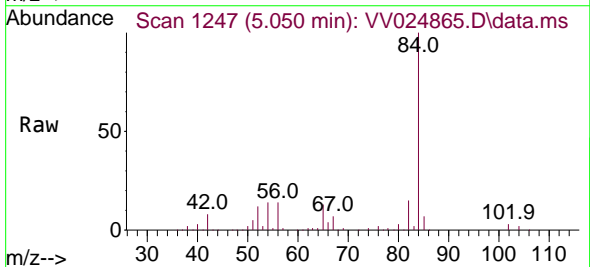


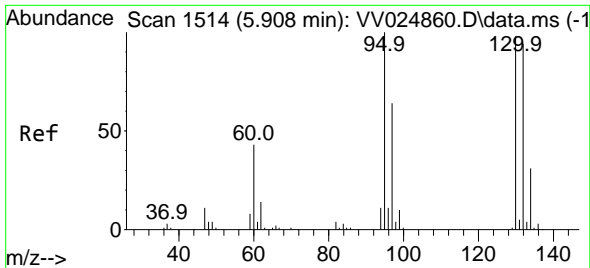
Tgt Ion: 96 Resp: 1333
 Ion Ratio Lower Upper
 96 100
 61 104.6 89.7 166.5
 68 0.0 0.0 0.0



#27
 1,2-Dichloroethane
 Concen: 0.077 ug/L
 RT: 5.050 min Scan# 1247
 Delta R.T. -0.074 min
 Lab File: VV024865.D
 Acq: 08 Mar 2022 12:19

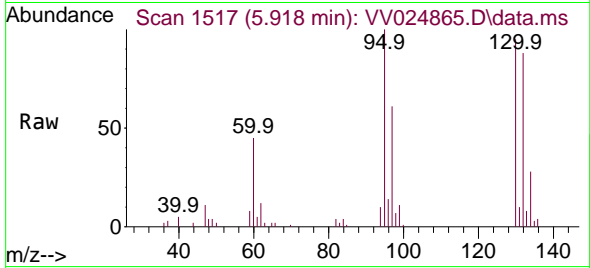
Tgt Ion: 62 Resp: 1271
 Ion Ratio Lower Upper
 62 100
 98 0.0 8.2 12.2#



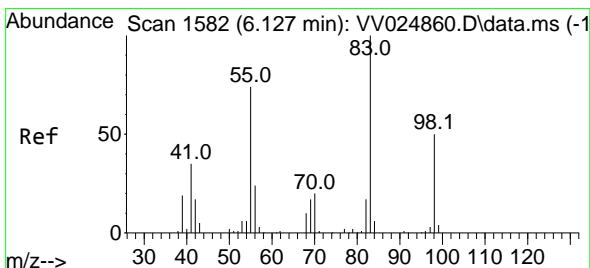
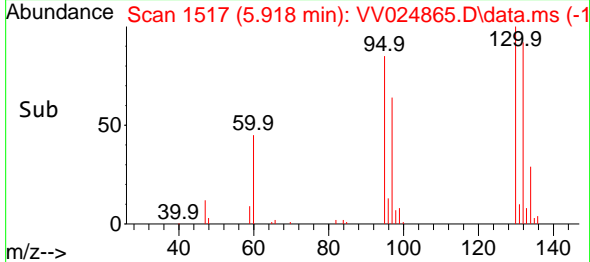
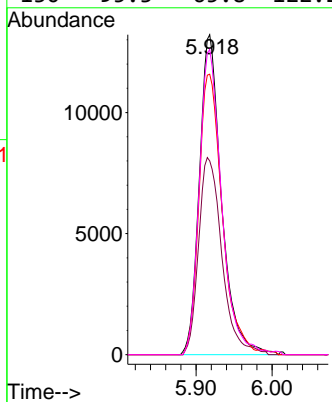


#34
 Trichloroethene
 Concen: 1.557 ug/L
 RT: 5.918 min Scan# 1517
 Delta R.T. 0.010 min
 Lab File: VV024865.D
 Acq: 08 Mar 2022 12:19

Instrument : MSVOA_V
 ClientSampleId :

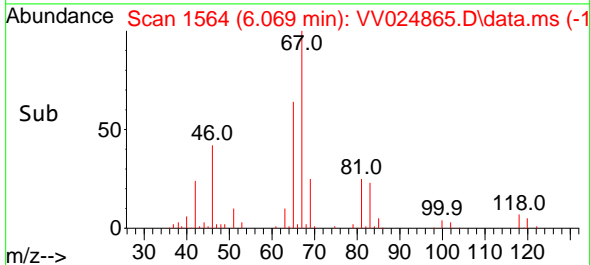
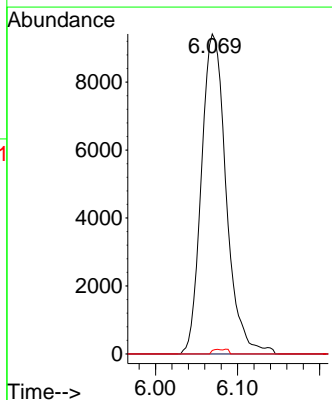
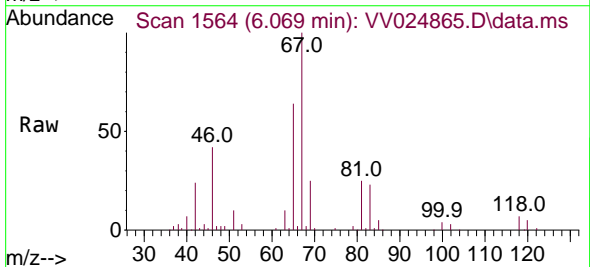


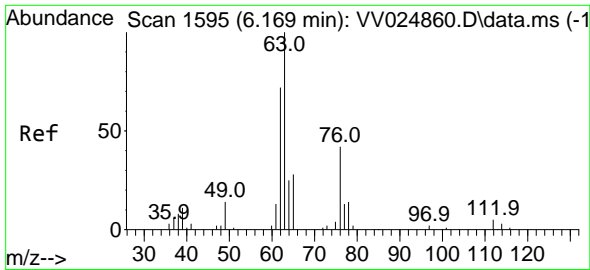
Tgt Ion: 95 Resp: 26823
 Ion Ratio Lower Upper
 95 100
 97 60.6 44.2 82.0
 132 87.7 62.1 115.3
 130 95.3 65.8 122.2



#35
 Methylcyclohexane
 Concen: 0.709 ug/L
 RT: 6.069 min Scan# 1564
 Delta R.T. -0.058 min
 Lab File: VV024865.D
 Acq: 08 Mar 2022 12:19

Tgt Ion: 83 Resp: 19728
 Ion Ratio Lower Upper
 83 100
 55 0.0 58.8 88.2#
 98 0.6 38.6 58.0#

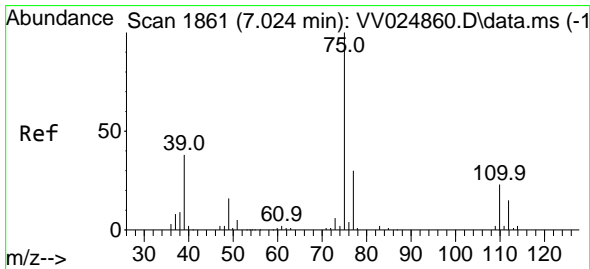
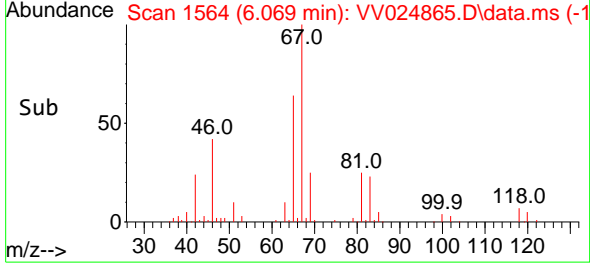
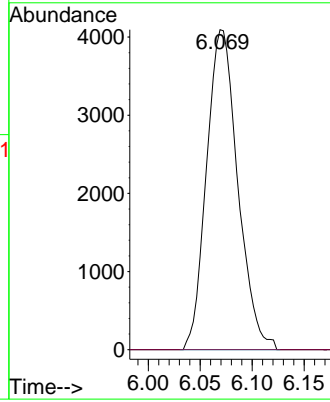
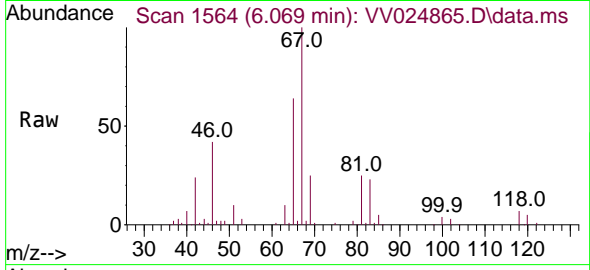




#37
 1,2-Dichloropropane
 Concen: 0.557 ug/L
 RT: 6.069 min Scan# 11
 Delta R.T. -0.100 min
 Lab File: VV024865.D
 Acq: 08 Mar 2022 12:19

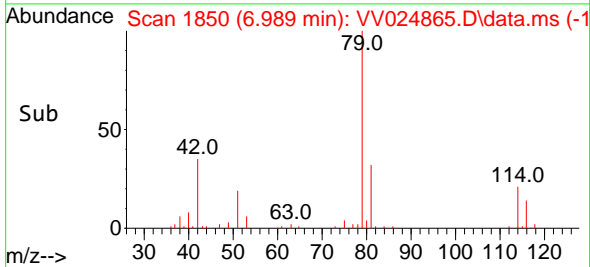
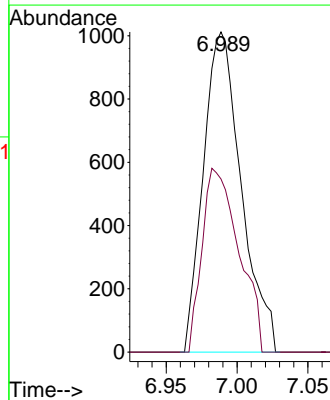
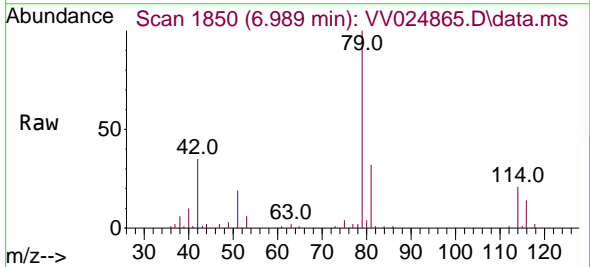
Instrument : MSVOA_V
 ClientSampleId :

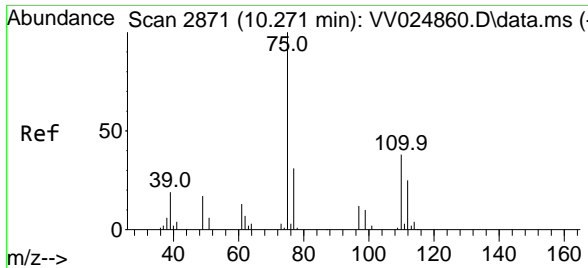
Tgt Ion: 63 Resp: 8566
 Ion Ratio Lower Upper
 63 100
 112 0.0 3.8 5.6#



#39
 cis-1,3-Dichloropropene
 Concen: 0.088 ug/L
 RT: 6.989 min Scan# 1850
 Delta R.T. -0.035 min
 Lab File: VV024865.D
 Acq: 08 Mar 2022 12:19

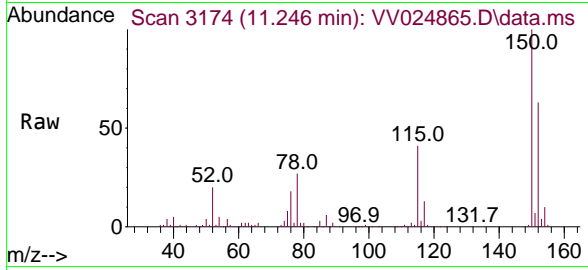
Tgt Ion: 75 Resp: 1883
 Ion Ratio Lower Upper
 75 100
 77 54.1 22.3 41.5#





#61
 1,2,3-Trichloropropane
 Concen: 1.482 ug/L
 RT: 11.246 min Scan# 31
 Delta R.T. 0.974 min
 Lab File: VV024865.D
 Acq: 08 Mar 2022 12:19

Instrument : MSVOA_V
 ClientSampleId :



Tgt Ion: 75 Resp: 11360

Ion	Ratio	Lower	Upper
75	100		
77	30.3	26.3	39.5
110	1.6	30.3	45.5#

