

Data Path : Z:\voasrv\HPCHEM1\MSVOA_V\Data\VV031022\
 Data File : VV024939.D
 Acq On : 11 Mar 2022 01:17
 Operator : SY/MD
 Sample : N1879-08
 Misc : 5mL/MSVOA_V/WATER
 ALS Vial : 39 Sample Multiplier: 1

Instrument :
 MSVOA_V
 ClientSampleId :
 C0D98

Integration Parameters: LSCINT.P

Integrator: RTE
 Smoothing : OFF
 Sampling : 1
 Start Thrs : 0.2
 Stop Thrs : 0

Filtering: 5
 Min Area: 0 % of largest Peak
 Max Peaks: 100
 Peak Location: TOP

If leading or trailing edge < 100 prefer < Baseline drop else tangent >
 Peak separation: 5

Method : Z:\voasrv\HPCHEM1\MSVOA_V\Method\SFAMVLM022822WMA.M
 Title : VOC Analysis

Signal : TIC: VV024939.D\data.ms

peak #	R.T. min	first scan	max scan	last scan	PK TY	peak height	corr. area	corr. % max.	% of total
1	1.307	76	83	99	rVB	180151	181998	15.22%	2.128%
2	1.571	157	165	176	rVB	138725	155819	13.03%	1.822%
3	2.108	321	332	360	rBV	283881	420635	35.17%	4.919%
4	2.349	404	407	409	rBV2	403	237	0.02%	0.003%
5	2.413	424	427	430	rBV	299	253	0.02%	0.003%
6	2.474	440	446	452	rVB4	410	650	0.05%	0.008%
7	2.510	453	457	462	rBV4	604	639	0.05%	0.007%
8	2.568	472	475	479	rBV	237	183	0.02%	0.002%
9	2.979	599	603	608	rBV2	197	197	0.02%	0.002%
10	3.098	633	640	644	rBV2	262	334	0.03%	0.004%
11	3.478	748	758	759	rBV2	201	279	0.02%	0.003%
12	3.699	825	827	833	rVB	183	181	0.02%	0.002%
13	3.732	833	837	841	rBV2	251	210	0.02%	0.002%
14	3.896	878	888	928	rBV2	63735	217753	18.21%	2.546%
15	4.349	1012	1029	1062	rBV	189729	468969	39.21%	5.484%
16	4.587	1101	1103	1109	rVB3	382	323	0.03%	0.004%
17	4.619	1110	1113	1117	rVB	378	245	0.02%	0.003%
18	4.658	1123	1125	1133	rVB2	368	279	0.02%	0.003%
19	4.709	1138	1141	1146	rVB2	234	174	0.01%	0.002%
20	4.757	1152	1156	1160	rBV2	208	186	0.02%	0.002%
21	4.783	1160	1164	1168	rBV	317	237	0.02%	0.003%
22	4.812	1168	1173	1177	rVB	208	185	0.02%	0.002%
23	4.925	1205	1208	1211	rBV2	272	185	0.02%	0.002%
24	5.047	1229	1246	1283	rBV2	468652	1196019	100.00%	13.986%
25	5.188	1289	1290	1294	rBV2	379	262	0.02%	0.003%
26	5.294	1320	1323	1326	rBV	240	194	0.02%	0.002%
27	5.394	1352	1354	1358	rBV2	236	177	0.01%	0.002%
28	5.519	1390	1393	1396	rBV	269	215	0.02%	0.003%
29	5.551	1400	1403	1407	rVB2	294	213	0.02%	0.002%
30	5.616	1407	1423	1447	rBV	317941	635428	53.13%	7.431%
31	5.860	1495	1499	1503	rBV	309	229	0.02%	0.003%
32	5.908	1503	1514	1532	rBV2	18376	39563	3.31%	0.463%
33	6.069	1550	1564	1590	rBV	263290	531306	44.42%	6.213%
34	6.220	1609	1611	1618	rVB2	679	531	0.04%	0.006%
35	6.297	1630	1635	1636	rBV2	276	186	0.02%	0.002%
36	6.362	1652	1655	1658	rBV	364	222	0.02%	0.003%

Data Path : Z:\voasrv\HPCHEM1\MSVOA_V\Data\VW031022\
 Data File : VW024939.D
 Acq On : 11 Mar 2022 01:17
 Operator : SY/MD
 Sample : N1879-08
 Misc : 5mL/MSVOA_V/WATER
 ALS Vial : 39 Sample Multiplier: 1

Instrument :
 MSVOA_V
 ClientSampleId :
 COD98

Integration Parameters: LSCINT.P

Integrator: RTE
 Smoothing : OFF
 Sampling : 1
 Start Thrs : 0.2
 Stop Thrs : 0

Filtering: 5
 Min Area: 0 % of largest Peak
 Max Peaks: 100
 Peak Location: TOP

If leading or trailing edge < 100 prefer < Baseline drop else tangent >
 Peak separation: 5

Method : Z:\voasrv\HPCHEM1\MSVOA_V\Method\SFAMVLM022822WMA.M
 Title : VOC Analysis

37	6.407	1666	1669	1677	rVB2	234	303	0.03%	0.004%
38	6.535	1700	1709	1713	rBV2	280	421	0.04%	0.005%
39	6.561	1713	1717	1719	rBV	301	211	0.02%	0.002%
40	6.854	1805	1808	1812	rBV2	242	174	0.01%	0.002%
41	6.986	1838	1849	1879	rBV	134812	245123	20.49%	2.866%
42	7.088	1879	1881	1886	rVV3	280	237	0.02%	0.003%
43	7.182	1906	1910	1912	rBV2	227	198	0.02%	0.002%
44	7.195	1912	1914	1917	rVV2	380	332	0.03%	0.004%
45	7.223	1921	1923	1928	rVB2	426	282	0.02%	0.003%
46	7.314	1937	1951	1970	rBV	556044	960609	80.32%	11.233%
47	7.622	2037	2047	2075	rBV	89553	156918	13.12%	1.835%
48	7.725	2077	2079	2083	rVB	595	269	0.02%	0.003%
49	7.773	2092	2094	2100	rVB4	220	200	0.02%	0.002%
50	7.934	2139	2144	2145	rBV	608	438	0.04%	0.005%
51	8.088	2182	2192	2230	rBV	245964	482262	40.32%	5.639%
52	8.574	2341	2343	2350	rVB	238	190	0.02%	0.002%
53	8.619	2353	2357	2359	rBV2	335	235	0.02%	0.003%
54	8.850	2417	2429	2458	rBV	491005	794641	66.44%	9.292%
55	9.034	2484	2486	2489	rVB3	371	170	0.01%	0.002%
56	9.053	2490	2492	2501	rVB2	272	311	0.03%	0.004%
57	9.153	2517	2523	2526	rVB4	415	410	0.03%	0.005%
58	9.281	2555	2563	2565	rBV2	230	296	0.02%	0.003%
59	9.301	2565	2569	2572	rVB	265	175	0.01%	0.002%
60	9.368	2586	2590	2595	rBV2	275	301	0.03%	0.004%
61	10.037	2796	2798	2805	rVV2	230	216	0.02%	0.003%
62	10.127	2817	2826	2834	rBV5	2341	3549	0.30%	0.042%
63	10.214	2841	2853	2870	rBV	329779	514524	43.02%	6.017%
64	10.310	2880	2883	2885	rBV2	380	258	0.02%	0.003%
65	10.323	2885	2887	2890	rVB2	555	277	0.02%	0.003%
66	10.381	2899	2905	2912	rVB3	801	1078	0.09%	0.013%
67	10.461	2926	2930	2934	rVB2	300	252	0.02%	0.003%
68	10.564	2959	2962	2963	rBV	640	327	0.03%	0.004%
69	10.648	2984	2988	2990	rBV	220	190	0.02%	0.002%
70	10.744	3016	3018	3023	rBV	252	218	0.02%	0.003%
71	10.921	3062	3073	3080	rVB5	1676	2869	0.24%	0.034%
72	11.095	3124	3127	3131	rBV2	194	192	0.02%	0.002%
73	11.146	3136	3143	3148	rVB3	1120	1355	0.11%	0.016%
74	11.246	3163	3174	3200	rBV	486227	734588	61.42%	8.590%
75	11.387	3215	3218	3225	rVV3	780	755	0.06%	0.009%
76	11.423	3225	3229	3240	rVB7	1790	2584	0.22%	0.030%

Data Path : Z:\voasrv\HPCHEM1\MSVOA_V\Data\VW031022\
 Data File : VW024939.D
 Acq On : 11 Mar 2022 01:17
 Operator : SY/MD
 Sample : N1879-08
 Misc : 5mL/MSVOA_V/WATER
 ALS Vial : 39 Sample Multiplier: 1

Instrument :
 MSVOA_V
 ClientSampleId :
 C0D98

Integration Parameters: LSCINT.P

Integrator: RTE
 Smoothing : OFF
 Sampling : 1
 Start Thrs: 0.2
 Stop Thrs : 0

Filtering: 5
 Min Area: 0 % of largest Peak
 Max Peaks: 100
 Peak Location: TOP

If leading or trailing edge < 100 prefer < Baseline drop else tangent >
 Peak separation: 5

Method : Z:\voasrv\HPCHEM1\MSVOA_V\Method\SFAMVLM022822WMA.M
 Title : VOC Analysis

77	11.468	3240	3243	3250	rVB	219	245	0.02%	0.003%
78	11.558	3267	3271	3272	rBV2	257	182	0.02%	0.002%
79	11.622	3279	3291	3318	rVB	508751	782167	65.40%	9.146%
80	11.718	3318	3321	3324	rBV3	341	284	0.02%	0.003%
81	11.760	3330	3334	3338	rBV2	402	343	0.03%	0.004%
82	11.783	3338	3341	3346	rVB3	573	554	0.05%	0.006%
83	11.854	3354	3363	3367	rBV3	731	927	0.08%	0.011%
84	11.937	3385	3389	3398	rVV2	240	334	0.03%	0.004%
85	11.992	3403	3406	3411	rBV2	252	191	0.02%	0.002%
86	12.053	3421	3425	3428	rBV2	249	213	0.02%	0.002%
87	12.091	3434	3437	3440	rBV2	346	249	0.02%	0.003%
88	12.198	3467	3470	3474	rVB	259	205	0.02%	0.002%
89	12.246	3481	3485	3488	rBV	455	432	0.04%	0.005%
90	12.326	3504	3510	3515	rBV2	230	341	0.03%	0.004%
91	12.693	3621	3624	3630	rBV2	146	187	0.02%	0.002%
92	13.152	3764	3767	3772	rBV	373	241	0.02%	0.003%
93	13.554	3888	3892	3896	rVB3	305	249	0.02%	0.003%
94	13.654	3919	3923	3929	rVB2	224	199	0.02%	0.002%
95	13.908	3999	4002	4004	rVB	291	194	0.02%	0.002%
96	14.207	4091	4095	4096	rBV	259	200	0.02%	0.002%
97	14.387	4148	4151	4155	rVB2	243	172	0.01%	0.002%
98	14.599	4214	4217	4220	rBV2	348	222	0.02%	0.003%
99	14.657	4233	4235	4239	rBV2	248	194	0.02%	0.002%
100	15.844	4602	4604	4610	rVB3	636	451	0.04%	0.005%

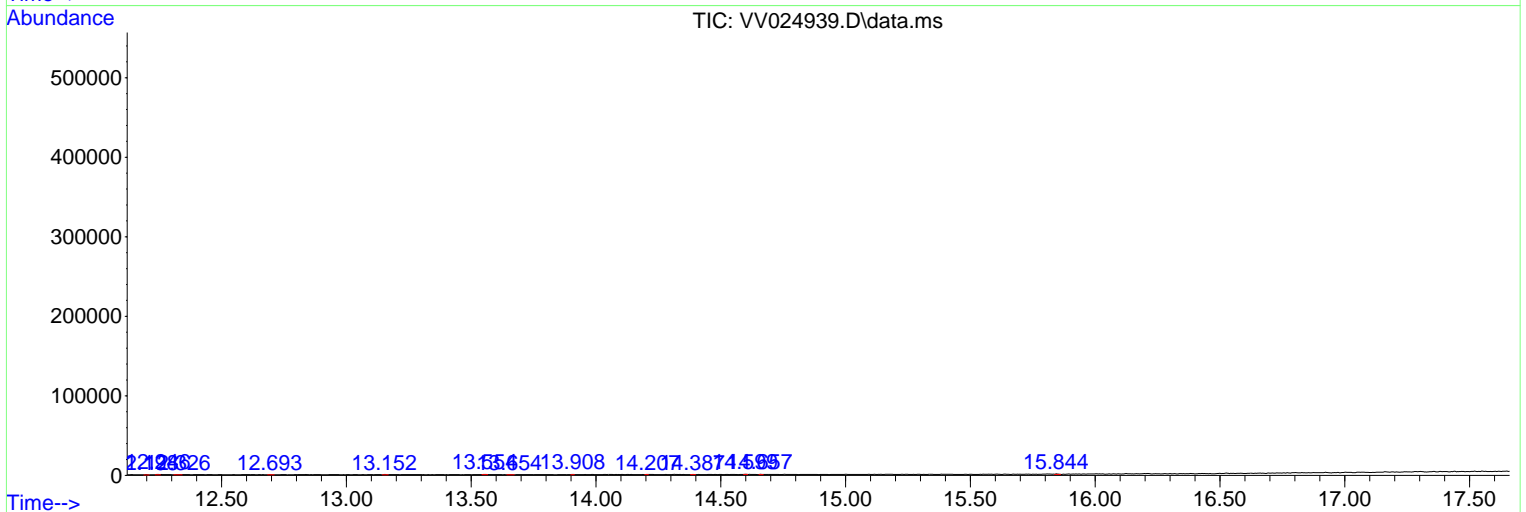
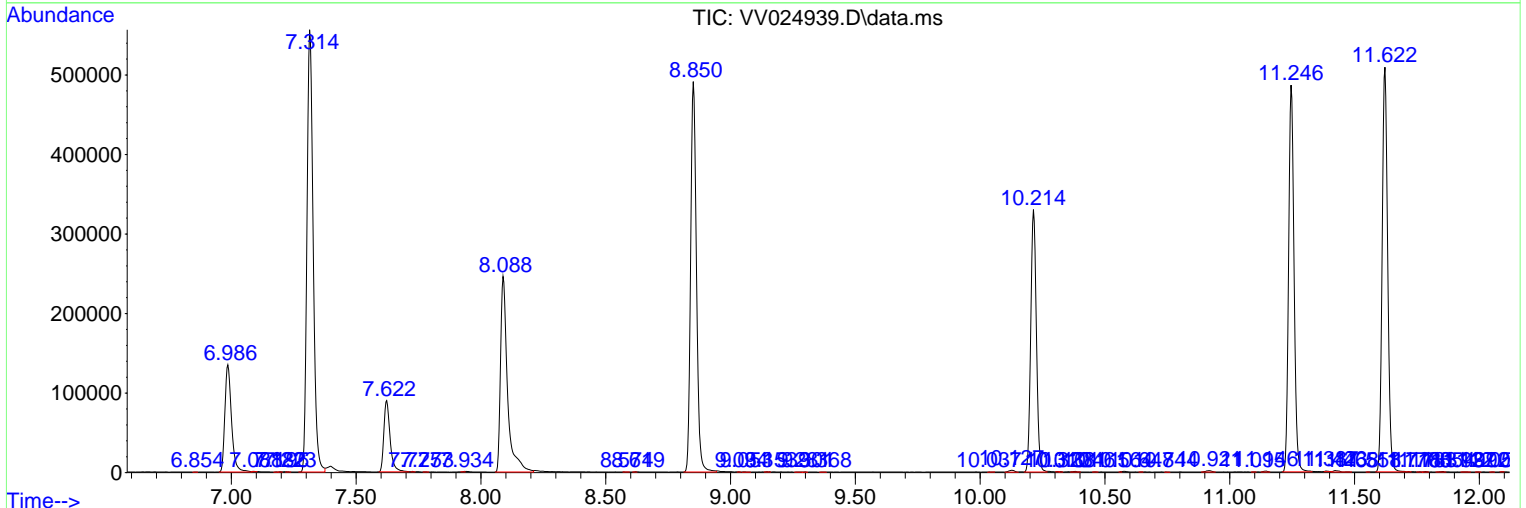
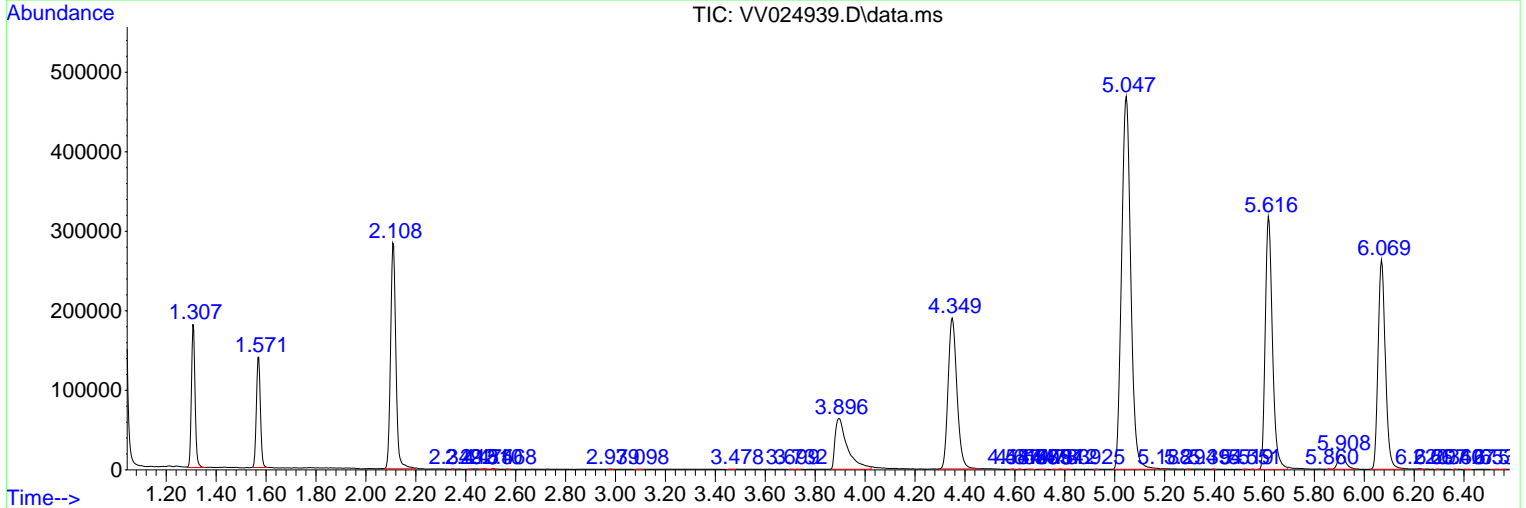
Sum of corrected areas: 8551610

Data Path : Z:\voasrv\HPCHEM1\MSVOA_V\Data\VV031022\
 Data File : VV024939.D
 Acq On : 11 Mar 2022 01:17
 Operator : SY/MD
 Sample : N1879-08
 Misc : 5mL/MSVOA_V/WATER
 ALS Vial : 39 Sample Multiplier: 1

Instrument :
 MSVOA_V
 ClientSampleId :
 C0D98

Quant Method : Z:\voasrv\HPCHEM1\MSVOA_V\Method\SFAMVLM022822WMA.M
 Quant Title : VOC Analysis

TIC Library : C:\Database\NIST20.L
 TIC Integration Parameters: LSCINT.P



Data Path : Z:\voasrv\HPCHEM1\MSVOA_V\Data\VV031022\
 Data File : VV024939.D
 Acq On : 11 Mar 2022 01:17
 Operator : SY/MD
 Sample : N1879-08
 Misc : 5mL/MSVOA_V/WATER
 ALS Vial : 39 Sample Multiplier: 1

Instrument :
 MSVOA_V
 ClientSampleId :
 COD98

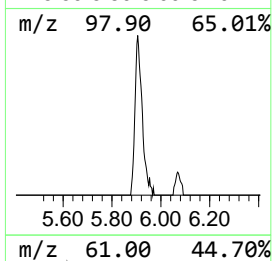
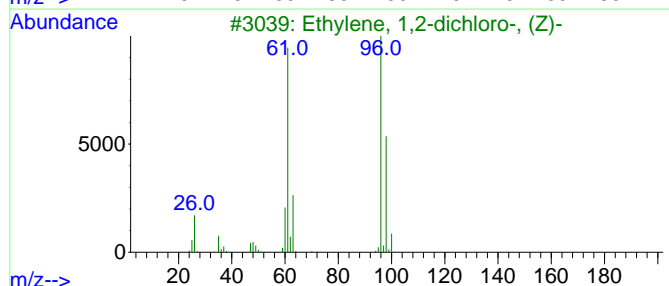
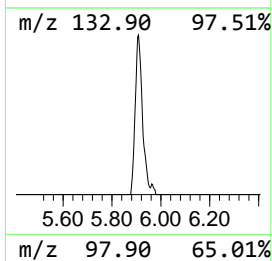
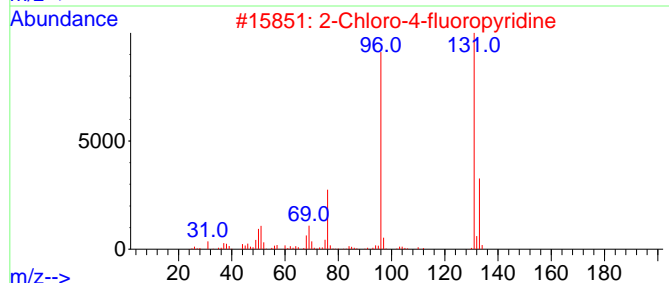
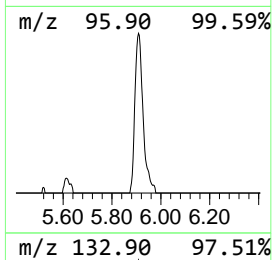
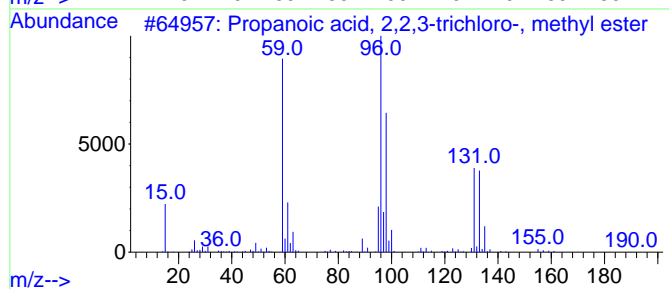
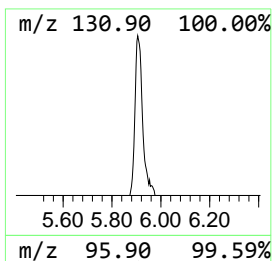
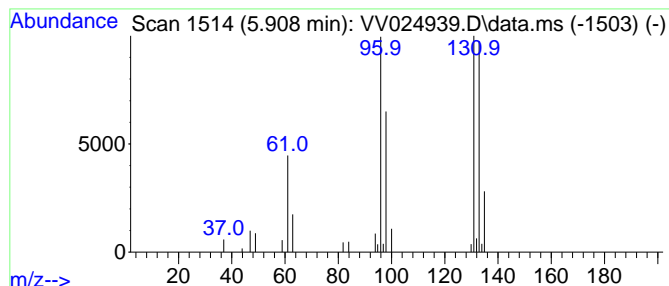
Quant Method : Z:\voasrv\HPCHEM1\MSVOA_V\Method\SFAMVLM022822WMA.M
 Quant Title : VOC Analysis

TIC Library : C:\Database\NIST20.L
 TIC Integration Parameters: LSCINT.P

 Peak Number 1 Propanoic acid, 2,2,3-trich... Concentration Rank 2

R.T.	EstConc	Area	Relative to ISTD	R.T.
5.908	3.11 ug/L	39563	1,4-Difluorobenzene	5.616

Hit#	of	Tentative ID	MW	MolForm	CAS#	Qual
1	5	Propanoic acid, 2,2,3-trichloro-...	190	C4H5Cl3O2	004749-35-3	56
2		2-Chloro-4-fluoropyridine	131	C5H3ClFN	1000484-44-8	38
3		Ethylene, 1,2-dichloro-, (Z)-	96	C2H2Cl2	000156-59-2	38
4		Dihydro-4,5-dichloro-2(3H)furanone	154	C4H4Cl2O2	114434-99-0	35
5		4-Chloro-3-fluoropyridine	131	C5H3ClFN	002546-56-7	27



Data Path : Z:\voasrv\HPCHEM1\MSVOA_V\Data\VV031022\
Data File : VV024939.D
Acq On : 11 Mar 2022 01:17
Operator : SY/MD
Sample : N1879-08
Misc : 5mL/MSVOA_V/WATER
ALS Vial : 39 Sample Multiplier: 1

Instrument :
MSVOA_V
ClientSampleId :
C0D98

Quant Method : Z:\voasrv\HPCHEM1\MSVOA_V\Method\SFAMVLM022822WMA.M
Quant Title : VOC Analysis

TIC Library : C:\Database\NIST0.L
TIC Integration Parameters: LSCINT.P

TIC Top Hit name	RT	EstConc	Units	Response	--Internal Standard--			
					#	RT	Resp	Conc
Propanoic acid,...	5.908	3.1	ug/L	39563	1	5.616	635428	50.0