

Data Path : Z:\voasrv\HPCHEM1\MSVOA\_V\Data\VV031424\  
 Data File : VV034594.D  
 Acq On : 14 Mar 2024 11:28  
 Operator : SY/MD  
 Sample : P1739-15  
 Misc : 5.0mL/MSVOA\_V/WATER  
 ALS Vial : 7 Sample Multiplier: 1

Instrument :  
 MSVOA\_V  
 ClientSampleId :  
 C0GG2

Integration Parameters: LSCINT.P

Integrator: RTE  
 Smoothing : OFF  
 Sampling : 1  
 Start Thrs : 0.2  
 Stop Thrs : 0

Filtering: 5  
 Min Area: 0 % of largest Peak  
 Max Peaks: 100  
 Peak Location: TOP

If leading or trailing edge < 100 prefer < Baseline drop else tangent >  
 Peak separation: 5

Method : Z:\voasrv\HPCHEM1\MSVOA\_V\Method\SFAMVLM022924WMA.M  
 Title : VOC Analysis

Signal : TIC: VV034594.D\data.ms

peak #	R.T. min	first scan	max scan	last scan	PK TY	peak height	corr. area	corr. % max.	% of total
1	1.278	68	74	91	rVB	211877	226013	16.28%	2.227%
2	1.529	145	152	167	rVB	178791	210662	15.17%	2.076%
3	2.060	306	317	330	rBV	360116	524685	37.79%	5.170%
4	2.481	445	448	450	rBV2	293	139	0.01%	0.001%
5	2.494	450	452	456	rBV	301	253	0.02%	0.002%
6	2.998	607	609	614	rVB	229	131	0.01%	0.001%
7	3.024	614	617	621	rVB2	120	99	0.01%	0.001%
8	3.050	621	625	629	rBV2	164	151	0.01%	0.001%
9	3.072	629	632	634	rBV	136	94	0.01%	0.001%
10	3.240	680	684	689	rBV2	230	168	0.01%	0.002%
11	3.510	762	768	772	rVB2	181	196	0.01%	0.002%
12	3.590	787	793	796	rBV	207	259	0.02%	0.003%
13	3.638	805	808	813	rBV2	307	282	0.02%	0.003%
14	3.741	837	840	844	rVB	177	124	0.01%	0.001%
15	3.786	846	854	886	rBV	101505	282230	20.33%	2.781%
16	4.246	982	997	1028	rBV	218776	562362	40.50%	5.541%
17	4.635	1115	1118	1123	rBV4	560	448	0.03%	0.004%
18	4.748	1151	1153	1155	rBV2	253	93	0.01%	0.001%
19	4.789	1163	1166	1169	rBV	485	268	0.02%	0.003%
20	4.812	1170	1173	1174	rVV	203	105	0.01%	0.001%
21	4.828	1174	1178	1180	rVV2	211	167	0.01%	0.002%
22	4.953	1201	1217	1248	rBV2	527929	1388584	100.00%	13.681%
23	5.320	1329	1331	1334	rVB2	262	119	0.01%	0.001%
24	5.339	1335	1337	1339	rBV	258	117	0.01%	0.001%
25	5.381	1347	1350	1355	rVB2	341	332	0.02%	0.003%
26	5.423	1360	1363	1370	rBV2	394	512	0.04%	0.005%
27	5.532	1386	1397	1431	rBV	352460	728370	52.45%	7.177%
28	5.831	1481	1490	1512	rVB4	11351	26270	1.89%	0.259%
29	5.989	1526	1539	1571	rBV	296452	623696	44.92%	6.145%
30	6.313	1636	1640	1642	rBV3	249	204	0.01%	0.002%
31	6.477	1688	1691	1693	rBV2	164	86	0.01%	0.001%
32	6.590	1720	1726	1728	rBV4	822	916	0.07%	0.009%
33	6.728	1766	1769	1771	rBV	294	231	0.02%	0.002%
34	6.786	1785	1787	1790	rVV	193	99	0.01%	0.001%
35	6.912	1815	1826	1850	rBV	155254	293286	21.12%	2.890%
36	7.146	1890	1899	1902	rBV6	1179	1707	0.12%	0.017%

Data Path : Z:\voasrv\HPCHEM1\MSVOA\_V\Data\VW031424\  
 Data File : VW034594.D  
 Acq On : 14 Mar 2024 11:28  
 Operator : SY/MD  
 Sample : P1739-15  
 Misc : 5.0mL/MSVOA\_V/WATER  
 ALS Vial : 7 Sample Multiplier: 1

Instrument :  
 MSVOA\_V  
 ClientSampleId :  
 C0GG2

Integration Parameters: LSCINT.P

Integrator: RTE  
 Smoothing : OFF  
 Sampling : 1  
 Start Thrs: 0.2  
 Stop Thrs : 0

Filtering: 5  
 Min Area: 0 % of largest Peak  
 Max Peaks: 100  
 Peak Location: TOP

If leading or trailing edge < 100 prefer < Baseline drop else tangent >  
 Peak separation: 5

Method : Z:\voasrv\HPCHEM1\MSVOA\_V\Method\SFAMVLM022924WMA.M  
 Title : VOC Analysis

37	7.243	1918	1929	1966	rBV	621801	1091687	78.62%	10.756%
38	7.555	2016	2026	2056	rBV	102051	191782	13.81%	1.890%
39	7.809	2103	2105	2108	rVB3	265	104	0.01%	0.001%
40	7.876	2117	2126	2134	rBV4	1878	3241	0.23%	0.032%
41	8.024	2162	2172	2211	rBV	371493	691656	49.81%	6.815%
42	8.516	2320	2325	2327	rBV3	490	383	0.03%	0.004%
43	8.564	2337	2340	2347	rBV3	267	307	0.02%	0.003%
44	8.654	2365	2368	2373	rVB3	320	278	0.02%	0.003%
45	8.680	2373	2376	2381	rBV2	550	385	0.03%	0.004%
46	8.709	2381	2385	2387	rBV4	328	289	0.02%	0.003%
47	8.783	2397	2408	2436	rBV	525516	866955	62.43%	8.542%
48	9.024	2481	2483	2487	rVB2	600	302	0.02%	0.003%
49	9.046	2487	2490	2491	rBV	387	221	0.02%	0.002%
50	9.079	2497	2500	2501	rBV2	420	245	0.02%	0.002%
51	9.127	2513	2515	2518	rBV2	182	124	0.01%	0.001%
52	9.185	2530	2533	2538	rBV2	231	254	0.02%	0.003%
53	9.207	2538	2540	2544	rVB2	419	199	0.01%	0.002%
54	9.272	2556	2560	2565	rBV2	181	204	0.01%	0.002%
55	9.313	2569	2573	2575	rBV2	315	205	0.01%	0.002%
56	9.365	2587	2589	2593	rVB2	224	97	0.01%	0.001%
57	9.407	2600	2602	2609	rVB2	278	218	0.02%	0.002%
58	9.471	2619	2622	2625	rBV	157	128	0.01%	0.001%
59	9.526	2636	2639	2643	rVB	265	215	0.02%	0.002%
60	9.548	2643	2646	2648	rBV	241	93	0.01%	0.001%
61	9.577	2648	2655	2665	rBV2	243	421	0.03%	0.004%
62	9.728	2700	2702	2707	rVB3	336	275	0.02%	0.003%
63	9.837	2732	2736	2739	rBV	221	166	0.01%	0.002%
64	9.857	2739	2742	2744	rBV2	196	121	0.01%	0.001%
65	9.972	2777	2778	2783	rBV2	179	133	0.01%	0.001%
66	10.008	2785	2789	2793	rVV2	313	323	0.02%	0.003%
67	10.040	2796	2799	2803	rVB3	373	253	0.02%	0.002%
68	10.063	2803	2806	2808	rBV	176	105	0.01%	0.001%
69	10.153	2815	2834	2856	rBV	387715	621056	44.73%	6.119%
70	10.326	2880	2888	2897	rVB3	2970	4216	0.30%	0.042%
71	10.368	2897	2901	2904	rBV	223	223	0.02%	0.002%
72	10.693	2998	3002	3004	rBV2	215	144	0.01%	0.001%
73	10.709	3004	3007	3008	rBV2	204	94	0.01%	0.001%
74	10.751	3017	3020	3022	rBV	177	127	0.01%	0.001%
75	10.873	3055	3058	3062	rVB2	301	228	0.02%	0.002%
76	10.921	3070	3073	3075	rBV2	171	104	0.01%	0.001%

Data Path : Z:\voasrv\HPCHEM1\MSVOA\_V\Data\VV031424\  
 Data File : VV034594.D  
 Acq On : 14 Mar 2024 11:28  
 Operator : SY/MD  
 Sample : P1739-15  
 Misc : 5.0mL/MSVOA\_V/WATER  
 ALS Vial : 7 Sample Multiplier: 1

Instrument :  
 MSVOA\_V  
 ClientSampleId :  
 C0GG2

Integration Parameters: LSCINT.P

Integrator: RTE  
 Smoothing : OFF Filtering: 5  
 Sampling : 1 Min Area: 0 % of largest Peak  
 Start Thrs: 0.2 Max Peaks: 100  
 Stop Thrs : 0 Peak Location: TOP

If leading or trailing edge < 100 prefer < Baseline drop else tangent >  
 Peak separation: 5

Method : Z:\voasrv\HPCHEM1\MSVOA\_V\Method\SFAMVLM022924WMA.M  
 Title : VOC Analysis

77	10.937	3075	3078	3082	rVB2	362	260	0.02%	0.003%
78	10.963	3082	3086	3090	rBV2	354	330	0.02%	0.003%
79	10.989	3090	3094	3096	rBV2	221	161	0.01%	0.002%
80	11.124	3133	3136	3137	rBV	303	154	0.01%	0.002%
81	11.185	3143	3155	3181	rBV	521952	824034	59.34%	8.119%
82	11.458	3238	3240	3241	rBV	224	110	0.01%	0.001%
83	11.561	3260	3272	3292	rBV	594723	944903	68.05%	9.310%
84	11.754	3327	3332	3335	rBV2	550	620	0.04%	0.006%
85	11.815	3349	3351	3353	rBV	376	127	0.01%	0.001%
86	11.953	3387	3394	3406	rBV7	3383	5393	0.39%	0.053%
87	12.014	3411	3413	3418	rBV3	450	370	0.03%	0.004%
88	12.078	3427	3433	3436	rVB2	544	403	0.03%	0.004%
89	12.191	3460	3468	3471	rBV3	1843	2200	0.16%	0.022%
90	12.259	3486	3489	3491	rBV	203	162	0.01%	0.002%
91	12.275	3492	3494	3496	rVB2	329	135	0.01%	0.001%
92	12.953	3703	3705	3708	rBV2	269	184	0.01%	0.002%
93	13.008	3719	3722	3724	rBV	227	174	0.01%	0.002%
94	13.149	3764	3766	3769	rBV2	235	163	0.01%	0.002%
95	13.223	3788	3789	3793	rBV	424	298	0.02%	0.003%
96	13.432	3849	3854	3858	rBV2	659	873	0.06%	0.009%
97	13.496	3871	3874	3879	rBV2	384	430	0.03%	0.004%
98	13.564	3891	3895	3896	rBV	446	296	0.02%	0.003%
99	13.683	3929	3932	3936	rBV4	594	567	0.04%	0.006%
100	14.345	4130	4138	4151	rVB7	9979	16008	1.15%	0.158%

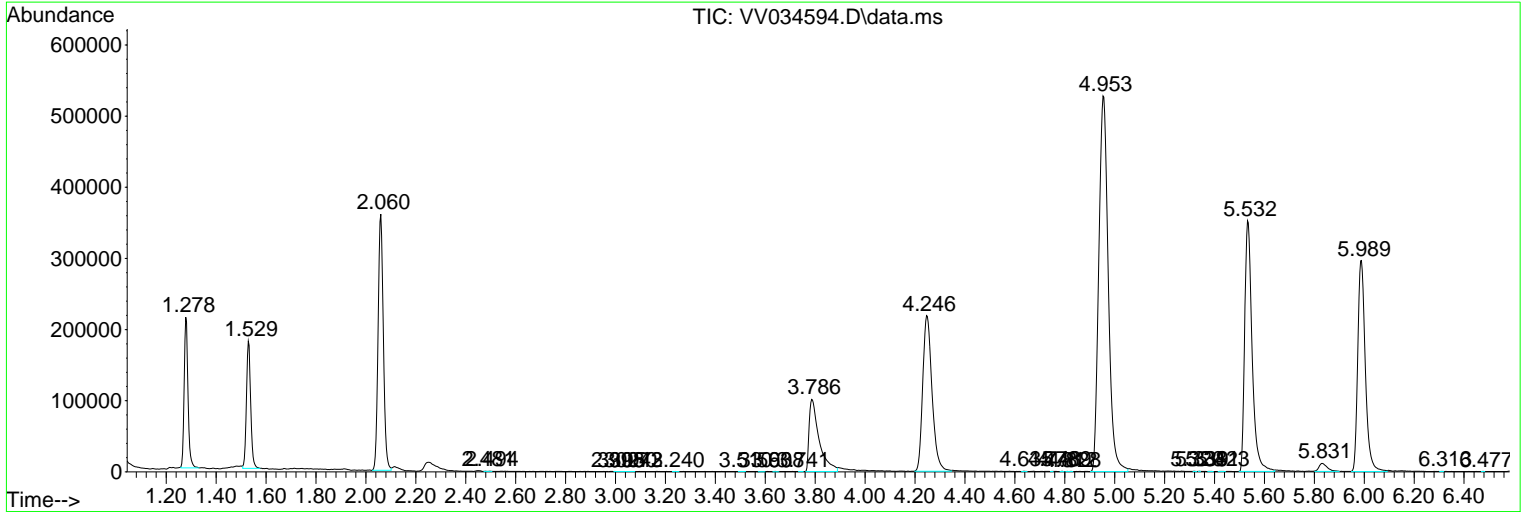
Sum of corrected areas: 10149374

Data Path : Z:\voasrv\HPCHEM1\MSVOA\_V\Data\VV031424\  
 Data File : VV034594.D  
 Acq On : 14 Mar 2024 11:28  
 Operator : SY/MD  
 Sample : P1739-15  
 Misc : 5.0mL/MSVOA\_V/WATER  
 ALS Vial : 7 Sample Multiplier: 1

**Instrument :**  
 MSVOA\_V  
**ClientSampleId :**  
 C0GG2

Quant Method : Z:\voasrv\HPCHEM1\MSVOA\_V\Method\SFAMVLM022924WMA.M  
 Quant Title : VOC Analysis

TIC Library : C:\Database\NIST20.L  
 TIC Integration Parameters: LSCINT.P



Library Search Compound Report

Data Path : Z:\voasrv\HPCHEM1\MSVOA\_V\Data\VV031424\  
Data File : VV034594.D  
Acq On : 14 Mar 2024 11:28  
Operator : SY/MD  
Sample : P1739-15  
Misc : 5.0mL/MSVOA\_V/WATER  
ALS Vial : 7 Sample Multiplier: 1

Instrument :  
MSVOA\_V  
ClientSampleId :  
C0GG2

Quant Method : Z:\voasrv\HPCHEM1\MSVOA\_V\Method\SFAMVLM022924WMA.M  
Quant Title : VOC Analysis

TIC Library : C:\Database\NIST20.L  
TIC Integration Parameters: LSCINT.P

No Library Search Compounds Detected

\*\*\*\*\*

Data Path : Z:\voasrv\HPCHEM1\MSVOA\_V\Data\VV031424\  
Data File : VV034594.D  
Acq On : 14 Mar 2024 11:28  
Operator : SY/MD  
Sample : P1739-15  
Misc : 5.0mL/MSVOA\_V/WATER  
ALS Vial : 7 Sample Multiplier: 1

Instrument :  
MSVOA\_V  
ClientSampleId :  
C0GG2

Quant Method : Z:\voasrv\HPCHEM1\MSVOA\_V\Method\SFAMVLM022924WMA.M  
Quant Title : VOC Analysis

TIC Library : C:\Database\NIST0.L  
TIC Integration Parameters: LSCINT.P

TIC Top Hit name	RT	EstConc	Units	Response	--Internal Standard--			
					#	RT	Resp	Conc

---