

Data Path : Z:\voasrv\HPCHEM1\MSVOA_V\Data\VV031424\
 Data File : VV034605.D
 Acq On : 14 Mar 2024 15:51
 Operator : SY/MD
 Sample : P1728-01DL 20X
 Misc : 5.0mL/MSVOA_V/WATER
 ALS Vial : 18 Sample Multiplier: 1

Instrument :
 MSVOA_V
 ClientSampleId :
 C0B74DL

Integration Parameters: LSCINT.P

Integrator: RTE
 Smoothing : OFF Filtering: 5
 Sampling : 1 Min Area: 0 % of largest Peak
 Start Thrs: 0.2 Max Peaks: 100
 Stop Thrs : 0 Peak Location: TOP

If leading or trailing edge < 100 prefer < Baseline drop else tangent >
 Peak separation: 5

Method : Z:\voasrv\HPCHEM1\MSVOA_V\Method\SFAMVLM022924WMA.M
 Title : VOC Analysis

Signal : TIC: VV034605.D\data.ms

peak #	R.T. min	first scan	max scan	last scan	PK TY	peak height	corr. area	corr. % max.	% of total
1	1.278	68	74	90	rVB	198605	209983	15.58%	2.085%
2	1.532	146	153	174	rVB	169480	198902	14.75%	1.975%
3	2.059	306	317	331	rBV	328803	480880	35.67%	4.774%
4	2.326	398	400	404	rBV	262	114	0.01%	0.001%
5	2.365	410	412	417	rVB	410	211	0.02%	0.002%
6	2.449	431	438	449	rBV3	2134	3017	0.22%	0.030%
7	2.654	500	502	506	rVB3	477	226	0.02%	0.002%
8	2.818	549	553	555	rBV	215	169	0.01%	0.002%
9	2.876	569	571	574	rBV2	172	106	0.01%	0.001%
10	2.973	597	601	604	rBV2	194	153	0.01%	0.002%
11	3.108	640	643	646	rBV	197	151	0.01%	0.001%
12	3.175	656	664	669	rBV2	271	457	0.03%	0.005%
13	3.262	684	691	694	rVV	332	311	0.02%	0.003%
14	3.307	700	705	708	rBV	307	270	0.02%	0.003%
15	3.448	745	749	751	rBV	222	165	0.01%	0.002%
16	3.567	782	786	790	rVB2	296	200	0.01%	0.002%
17	3.606	793	798	800	rBV	209	168	0.01%	0.002%
18	3.670	814	818	821	rVV	200	127	0.01%	0.001%
19	3.796	848	857	891	rBV2	89908	266550	19.77%	2.646%
20	4.246	982	997	1029	rBV	203750	521367	38.67%	5.176%
21	4.561	1092	1095	1099	rVB2	311	258	0.02%	0.003%
22	4.699	1136	1138	1142	rBV2	314	193	0.01%	0.002%
23	4.728	1145	1147	1152	rBV2	337	192	0.01%	0.002%
24	4.834	1176	1180	1182	rVV2	163	106	0.01%	0.001%
25	4.953	1200	1217	1260	rBV2	496260	1348180	100.00%	13.385%
26	5.262	1310	1313	1316	rBV3	418	268	0.02%	0.003%
27	5.387	1350	1352	1355	rVB	439	202	0.01%	0.002%
28	5.407	1355	1358	1359	rBV	198	134	0.01%	0.001%
29	5.439	1366	1368	1369	rBV	383	158	0.01%	0.002%
30	5.532	1386	1397	1440	rBV	346648	729040	54.08%	7.238%
31	5.831	1480	1490	1508	rBV3	11537	24983	1.85%	0.248%
32	5.905	1511	1513	1516	rVB3	539	209	0.02%	0.002%
33	5.918	1516	1517	1522	rVB2	583	403	0.03%	0.004%
34	5.989	1526	1539	1577	rBV	283532	602777	44.71%	5.985%
35	6.281	1628	1630	1633	rBV	241	187	0.01%	0.002%
36	6.304	1635	1637	1641	rVB	220	122	0.01%	0.001%

Data Path : Z:\voasrv\HPCHEM1\MSVOA_V\Data\VW031424\
 Data File : VW034605.D
 Acq On : 14 Mar 2024 15:51
 Operator : SY/MD
 Sample : P1728-01DL 20X
 Misc : 5.0mL/MSVOA_V/WATER
 ALS Vial : 18 Sample Multiplier: 1

Instrument :
 MSVOA_V
 ClientSampleId :
 C0B74DL

Integration Parameters: LSCINT.P

Integrator: RTE
 Smoothing : OFF
 Sampling : 1
 Start Thrs: 0.2
 Stop Thrs : 0

Filtering: 5
 Min Area: 0 % of largest Peak
 Max Peaks: 100
 Peak Location: TOP

If leading or trailing edge < 100 prefer < Baseline drop else tangent >
 Peak separation: 5

Method : Z:\voasrv\HPCHEM1\MSVOA_V\Method\SFAMVLM022924WMA.M
 Title : VOC Analysis

37	6.333	1641	1646	1648	rBV3	327	273	0.02%	0.003%
38	6.506	1697	1700	1703	rVB	211	113	0.01%	0.001%
39	6.529	1703	1707	1714	rVB2	229	331	0.02%	0.003%
40	6.567	1714	1719	1720	rBV	161	133	0.01%	0.001%
41	6.587	1720	1725	1726	rBV2	844	659	0.05%	0.007%
42	6.661	1744	1748	1750	rBV3	379	334	0.02%	0.003%
43	6.712	1762	1764	1767	rBV2	195	153	0.01%	0.002%
44	6.763	1778	1780	1782	rBV	292	158	0.01%	0.002%
45	6.802	1787	1792	1794	rVB2	277	197	0.01%	0.002%
46	6.825	1794	1799	1801	rBV2	148	147	0.01%	0.001%
47	6.911	1816	1826	1854	rBV	141601	272196	20.19%	2.702%
48	7.140	1892	1897	1899	rBV4	1052	1031	0.08%	0.010%
49	7.243	1918	1929	1962	rBV	578631	1020362	75.68%	10.130%
50	7.554	2016	2026	2051	rBV	99447	181365	13.45%	1.801%
51	7.763	2089	2091	2095	rVB3	475	207	0.02%	0.002%
52	8.024	2163	2172	2204	rBV	341065	649893	48.21%	6.452%
53	8.484	2313	2315	2319	rBV2	398	188	0.01%	0.002%
54	8.542	2328	2333	2336	rVB2	328	244	0.02%	0.002%
55	8.612	2352	2355	2358	rVB2	385	255	0.02%	0.003%
56	8.632	2358	2361	2363	rBV2	196	153	0.01%	0.002%
57	8.667	2369	2372	2374	rBV	346	190	0.01%	0.002%
58	8.783	2397	2408	2414	rBV	560016	907664	67.33%	9.012%
59	9.050	2489	2491	2492	rBV	259	107	0.01%	0.001%
60	9.059	2492	2494	2496	rVV2	359	167	0.01%	0.002%
61	9.136	2515	2518	2520	rBV2	271	191	0.01%	0.002%
62	9.178	2528	2531	2534	rBV2	190	170	0.01%	0.002%
63	9.194	2534	2536	2538	rVV3	328	197	0.01%	0.002%
64	9.223	2541	2545	2547	rBV2	196	134	0.01%	0.001%
65	9.336	2572	2580	2608	rBV2	7944	16848	1.25%	0.167%
66	9.496	2626	2630	2632	rBV2	479	330	0.02%	0.003%
67	9.541	2641	2644	2645	rBV2	272	148	0.01%	0.001%
68	9.712	2694	2697	2699	rBV	217	119	0.01%	0.001%
69	9.886	2749	2751	2757	rBV2	239	229	0.02%	0.002%
70	9.982	2778	2781	2782	rBV	236	147	0.01%	0.001%
71	10.021	2790	2793	2795	rBV2	268	177	0.01%	0.002%
72	10.152	2822	2834	2860	rBV	365077	577729	42.85%	5.736%
73	10.307	2880	2882	2883	rBV	369	153	0.01%	0.002%
74	10.323	2883	2887	2889	rVV3	544	519	0.04%	0.005%
75	10.406	2910	2913	2917	rBV2	428	268	0.02%	0.003%
76	10.429	2918	2920	2928	rVB2	261	184	0.01%	0.002%

Data Path : Z:\voasrv\HPCHEM1\MSVOA_V\Data\VV031424\
 Data File : VV034605.D
 Acq On : 14 Mar 2024 15:51
 Operator : SY/MD
 Sample : P1728-01DL 20X
 Misc : 5.0mL/MSVOA_V/WATER
 ALS Vial : 18 Sample Multiplier: 1

Instrument :
 MSVOA_V
 ClientSampleId :
 C0B74DL

Integration Parameters: LSCINT.P

Integrator: RTE
 Smoothing : OFF Filtering: 5
 Sampling : 1 Min Area: 0 % of largest Peak
 Start Thrs: 0.2 Max Peaks: 100
 Stop Thrs : 0 Peak Location: TOP

If leading or trailing edge < 100 prefer < Baseline drop else tangent >
 Peak separation: 5

Method : Z:\voasrv\HPCHEM1\MSVOA_V\Method\SFAMVLM022924WMA.M
 Title : VOC Analysis

77	10.464	2928	2931	2934	rBV	226	184	0.01%	0.002%
78	10.783	3027	3030	3032	rBV	327	196	0.01%	0.002%
79	10.866	3050	3056	3059	rBV3	510	622	0.05%	0.006%
80	10.943	3077	3080	3083	rBV2	326	224	0.02%	0.002%
81	11.008	3096	3100	3104	rBV2	294	294	0.02%	0.003%
82	11.123	3127	3136	3145	rBV3	25734	40672	3.02%	0.404%
83	11.188	3145	3156	3158	rBV	614038	822358	61.00%	8.165%
84	11.416	3225	3227	3229	rVB	411	163	0.01%	0.002%
85	11.503	3244	3254	3261	rBV4	6901	14131	1.05%	0.140%
86	11.561	3261	3272	3293	rVB2	598822	1041274	77.24%	10.338%
87	11.979	3400	3402	3407	rVB2	326	187	0.01%	0.002%
88	12.004	3407	3410	3413	rBV2	329	267	0.02%	0.003%
89	12.101	3437	3440	3447	rVB2	341	323	0.02%	0.003%
90	12.184	3464	3466	3467	rBV	606	282	0.02%	0.003%
91	12.432	3538	3543	3546	rBV2	288	239	0.02%	0.002%
92	12.477	3554	3557	3558	rBV	273	141	0.01%	0.001%
93	12.519	3566	3570	3571	rBV2	921	602	0.04%	0.006%
94	12.885	3681	3684	3688	rBV	323	240	0.02%	0.002%
95	12.969	3708	3710	3712	rBV	296	128	0.01%	0.001%
96	13.027	3724	3728	3731	rVB2	335	252	0.02%	0.003%
97	13.201	3772	3782	3800	rBV2	45084	71312	5.29%	0.708%
98	13.683	3922	3932	3943	rBV2	35097	52569	3.90%	0.522%
99	13.882	3991	3994	3995	rBV2	338	210	0.02%	0.002%
100	14.557	4200	4204	4205	rBV3	557	394	0.03%	0.004%

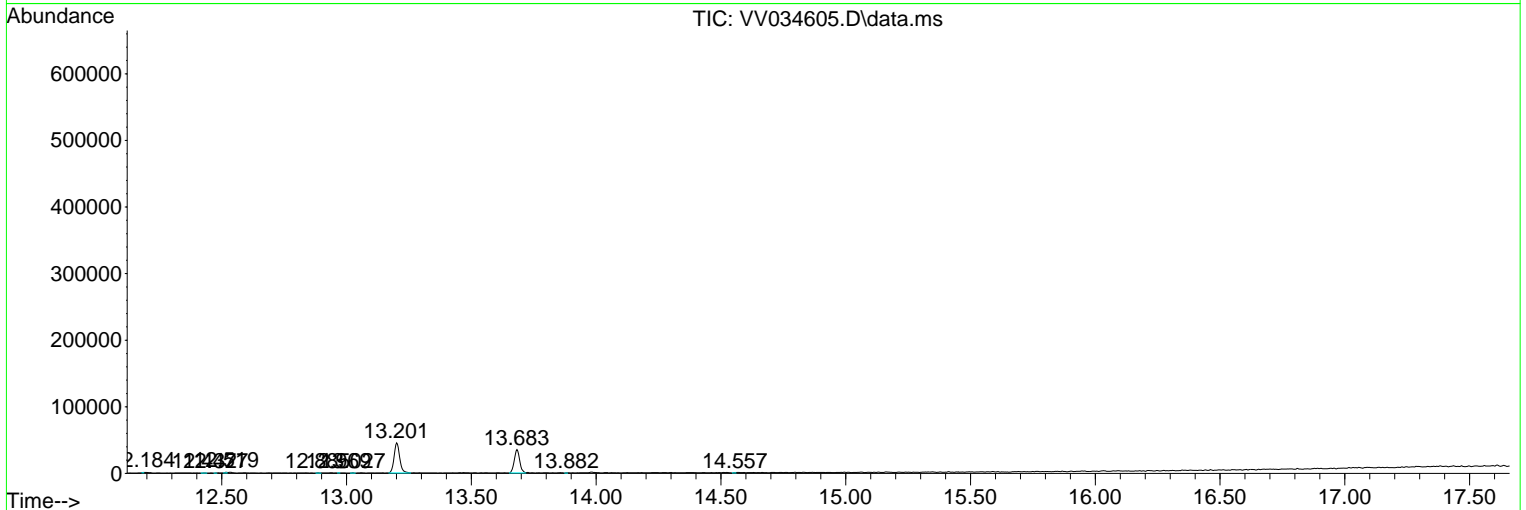
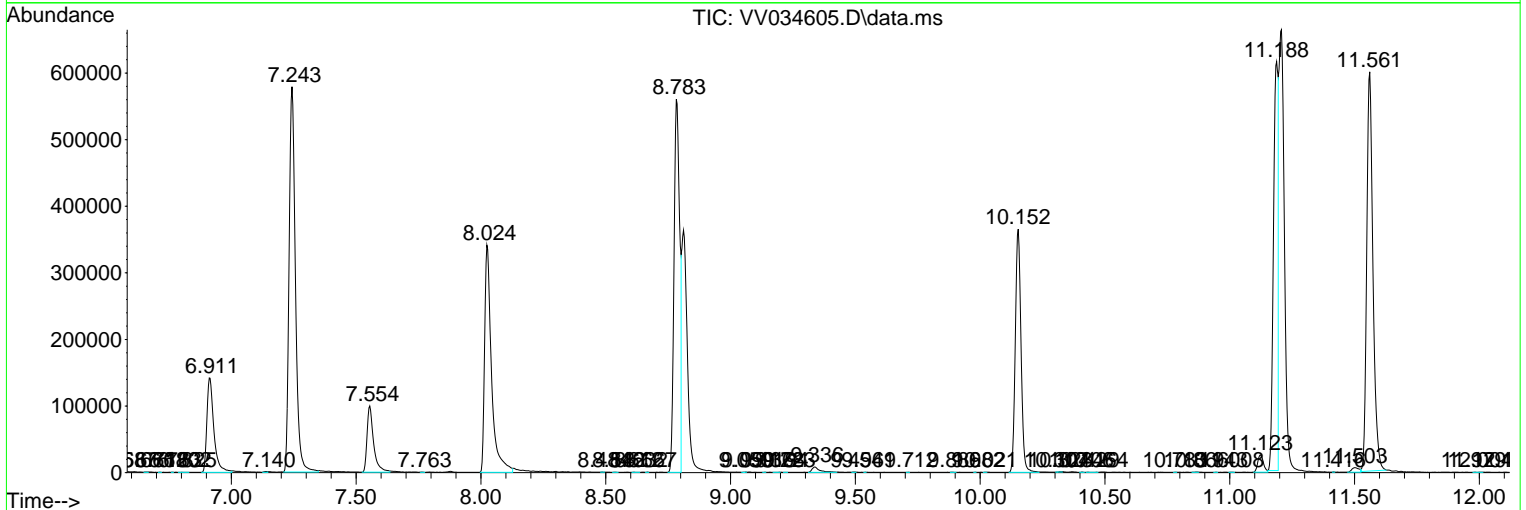
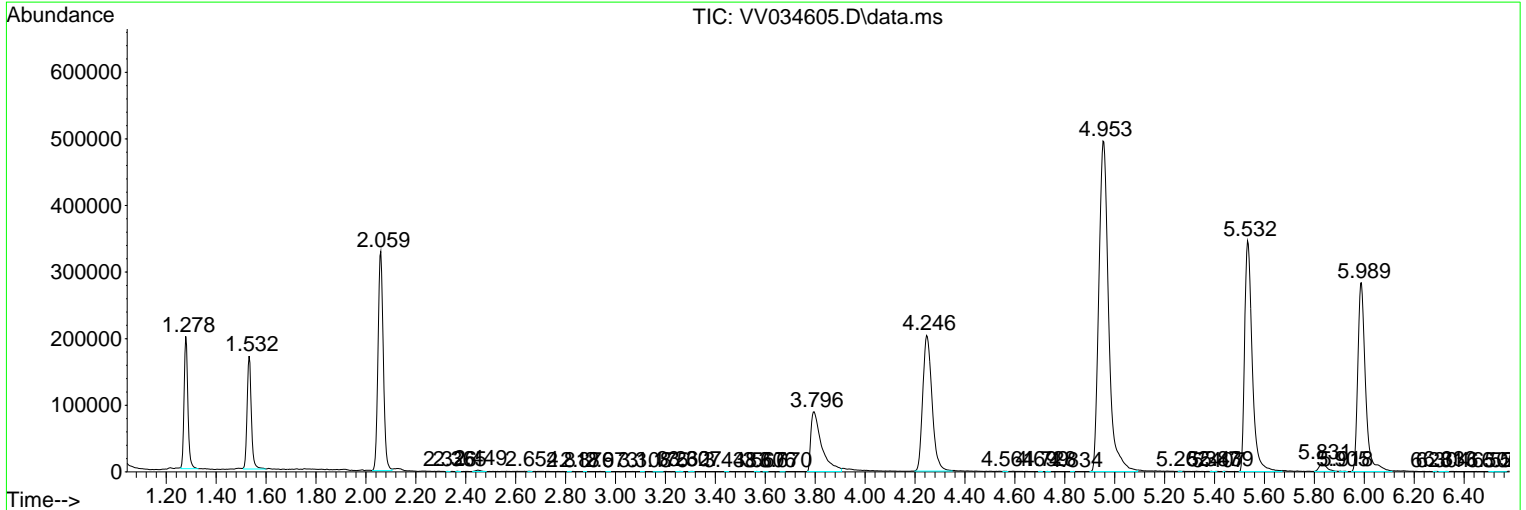
Sum of corrected areas: 10072266

Data Path : Z:\voasrv\HPCHEM1\MSVOA_V\Data\VV031424\
 Data File : VV034605.D
 Acq On : 14 Mar 2024 15:51
 Operator : SY/MD
 Sample : P1728-01DL 20X
 Misc : 5.0mL/MSVOA_V/WATER
 ALS Vial : 18 Sample Multiplier: 1

Instrument :
 MSVOA_V
ClientSampleId :
 C0B74DL

Quant Method : Z:\voasrv\HPCHEM1\MSVOA_V\Method\SFAMVLM022924WMA.M
 Quant Title : VOC Analysis

TIC Library : C:\Database\NIST20.L
 TIC Integration Parameters: LSCINT.P



Library Search Compound Report

Data Path : Z:\voasrv\HPCHEM1\MSVOA_V\Data\VV031424\
Data File : VV034605.D
Acq On : 14 Mar 2024 15:51
Operator : SY/MD
Sample : P1728-01DL 20X
Misc : 5.0mL/MSVOA_V/WATER
ALS Vial : 18 Sample Multiplier: 1

Instrument :
MSVOA_V
ClientSampleId :
C0B74DL

Quant Method : Z:\voasrv\HPCHEM1\MSVOA_V\Method\SFAMVLM022924WMA.M
Quant Title : VOC Analysis

TIC Library : C:\Database\NIST20.L
TIC Integration Parameters: LSCINT.P

No Library Search Compounds Detected

Data Path : Z:\voasrv\HPCHEM1\MSVOA_V\Data\VV031424\
Data File : VV034605.D
Acq On : 14 Mar 2024 15:51
Operator : SY/MD
Sample : P1728-01DL 20X
Misc : 5.0mL/MSVOA_V/WATER
ALS Vial : 18 Sample Multiplier: 1

Instrument :
MSVOA_V
ClientSampleId :
C0B74DL

Quant Method : Z:\voasrv\HPCHEM1\MSVOA_V\Method\SFAMVLM022924WMA.M
Quant Title : VOC Analysis

TIC Library : C:\Database\NIST0.L
TIC Integration Parameters: LSCINT.P

TIC Top Hit name	RT	EstConc	Units	Response	--Internal Standard--			
					#	RT	Resp	Conc
